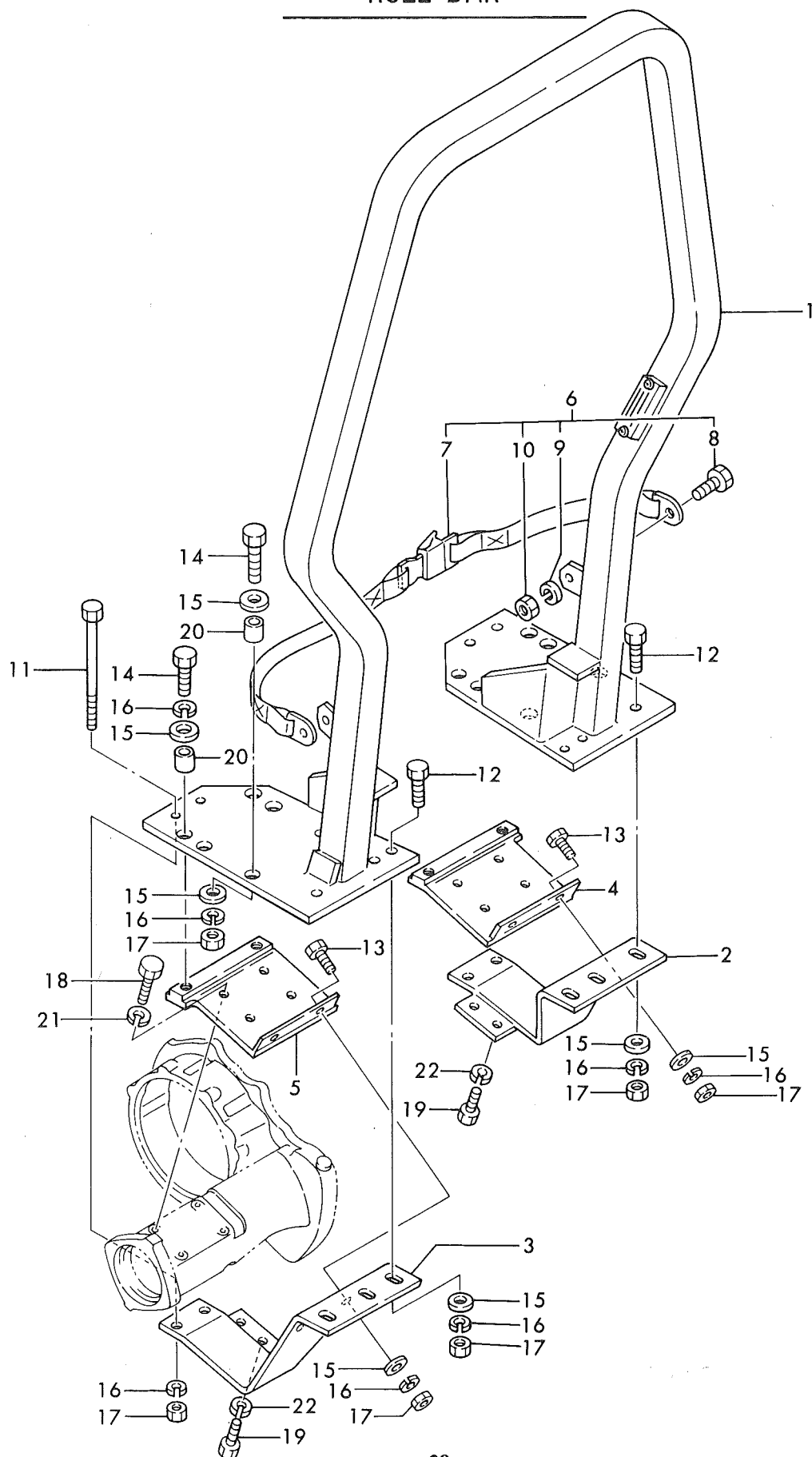


# ROLL BAR



# ROLL BAR

YEOT9015

(A)=YM276  
(B)=YM276D

Ref No.	lev.	O	PART NO.	DESCRIPTION	A	B	C	D	P/U	REMARKS
1	.		4 - 11040	ROLL BAR ASSY	1	1				
2	.		2 - 11867	BOTTOM AXLE RH	1	1				
3	.		2 - 11866	BOTTOM AXLE LH	1	1				
4	.		2 - 11869	TOP AXLE RH	1	1				
5	.		2 - 11868	TOP AXLE LH	1	1				
6	.		4 - 11790	SEAT BELT KIT	1	1				
7	..		3 - 10287	SEAT BELT	1	1				
8	..		3 - 10045	SCREW HEX CAP 0.437-14X1.00	2	2				
9	..		3 - 10152	WSHER LOCK 0.437	2	2				
10	..		3 - 10066	MUT, HEX 0.437-14NC	2	2				
11	.		3 - 11739	SCREW HEX CAP 0.500-13X6.00	4	4				
12	.		3 - 10130	SCREW HEX CAP 0.500-13X2.00	4	4				
13	.		3 - 10046	SCREW HEX CAP 0.500-13X1.50	4	4				
14	.		3 - 12247	SCREW HEX CAP 0.500-13X2.25	8	8				
15	.		3 - 10087	WASHER, FLAT 0.500	20	20				
16	.		3 - 10079	WASHER, LOCK 0.500	20	20				
17	.		3 - 10067	NUT, HEX 0.500X13NC	16	16				
18	.		3 - 12226	SCREW M10X25X1.5C	8	8				
19	.		3 - 12227	SCREW M10X35X1.5C	4	4				
20	.		1 - 15708	SPACER PIPE	8	8				
21	.		22217 - 100000	SPRING WASHER 10	8	8				
22	.		22217 - 100000	SPRING WASHER 10	4	4				