



YANMAR®

PARTS AND OWNER'S MANUAL

POWER STEERING UNIT

FOR YM180(D) AND YM187(D)

**REFERENCE YPS-186 DOCUMENT
FOR ADDED INFORMATION**

**OPTIONAL EQUIPMENT
PH8139 FLOW REGULATOR 2.0 GPM**



THIS SAFETY ALERT SYSTEM IDENTIFIES IMPORTANT
SAFETY MESSAGES IN THIS MANUAL.

YANMAR

Yanmar Power Steering
In-line, Fail Safe, Hydraulic Actuator



Yanmar Power Steering

In-line, Fail Safe, Hydraulic Actuator

(Dealer Installed Accessory)



Power steering for your Yanmar tractor becomes increasingly important to you as you add front and rear implements. Getting the most out of your Yanmar tractor, with less hard work for you, means greater efficiency, faster and safer working conditions — and personal satisfaction.

Failsafe Power Steering. Yanmar power steering utilizes an in-line hydraulic actuator that assures you manual control in case of hydraulic failure.

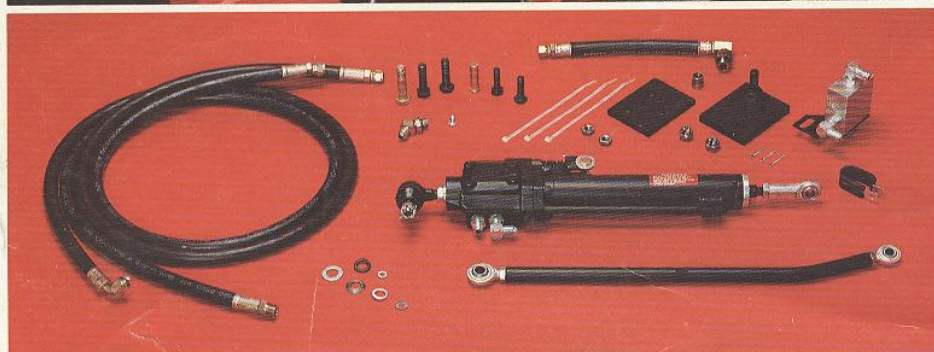
Powered by Existing Tractor Pump. The power steering accessory works off the integral Yanmar hydraulic pump. No need for auxiliary pump or installation costs.

Installs on Tractors with or without Implements. Yanmar power steering does not interfere with the installation or operation of your choice of implements and accessories.

Actuator and Control Valve Advantages. Wheel shock loads are not transmitted to driver through steering column. Front wheels maintain direction when steering wheel is released. Vibration or shock will not activate the power steering inadvertently.

SPECIFICATIONS

Flow Divider:
Standard Setting 1.5 gal. per minute
Cylinder (Actuator):
1½" dia. bore, ¾" dia. rod
Valve Type:
Patented Rotary Selector
Hydraulics:
Pressure preset at factory to protect tractor hydraulic system.



**Your Yanmar Dealer Offers
You a World of Difference**

- Expert service and repair
- Fully stocked parts department
- Skilled power steering technicians
- Satisfied customers



**Tractors and Implements
A world of difference**

Yanmar Tractor (U.S.A.), Inc.
476 Country Club Drive
Bensenville, Illinois 60106
Tel: (312) 860-5370
Telex: 253115, 206266

PRINTED IN U.S.A.
Form No. 880-11001-281100

Your Authorized Yanmar Tractor and Implement Dealer

Potestio Brothers
6232 W. Parker Rd.
Parker, Colorado 80134
841-2299 or 841-5173





01/01/2007



SAFETY PRECAUTIONS

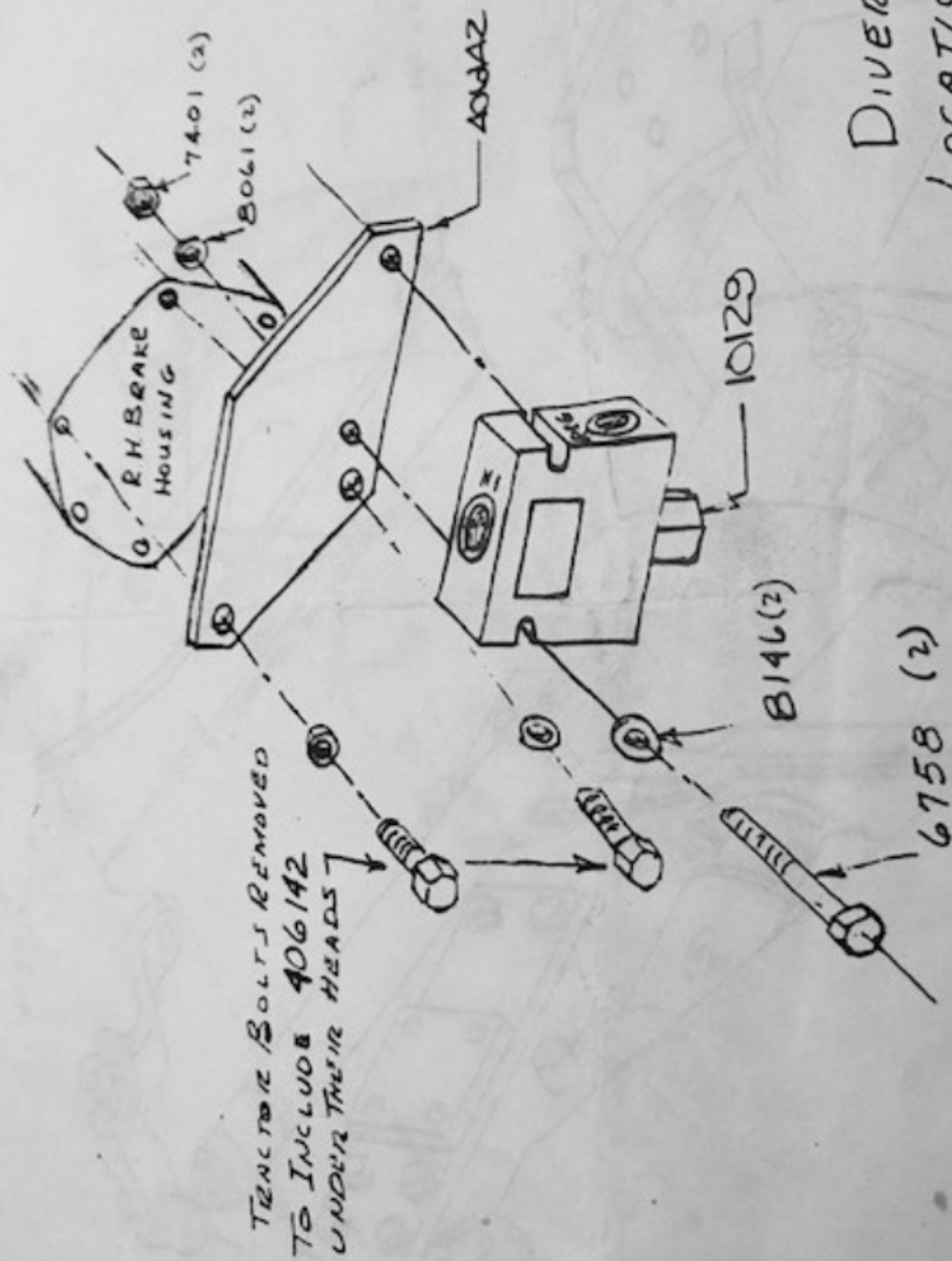


In addition to all of the safety precautions listed in your tractor Operator's Manual, the following items must be carefully followed:

1. Become familiar with your equipment and its controls by practicing on a smooth surface or roadway until you feel that you are comfortable with your new Power Steering Unit.
2. Engine stopping will cause the loss of power steering and manual steering will have to be used. This control is much more difficult. In the event of a failure in the hydraulic system the same will hold true.
3. Do not place your hands or other pieces of equipment close to the power steering unit while it is in operation or while the engine is running.
4. While moving, always avoid turning your wheels suddenly as this may cause the tractor to roll over.
5. Visually check your power steering system daily for fluid leaks, broken, missing or malfunctioning parts and make the necessary repairs. If assistance is needed, see your dealer. Never tighten hydraulic fittings or work on the unit while the engine is running.
6. Check the hydraulic system before each use for signs of leaks or wear. **ESCAPING HYDRAULIC FLUID, UNDER PRESSURE, CAN BE VERY DANGEROUS.** Hydraulic fluid escaping under pressure can have enough force to penetrate the skin or destroy eyesight. Hydraulic fluid may also cause infection of a minor cut or opening in the skin. If injured by escaping fluid, **GET MEDICAL ATTENTION AT ONCE.** Make sure that all the connections are tight and that all hoses are in good condition before applying pressure to the system. Relieve all pressure before disconnecting the lines or performing any other work on the hydraulic system. To locate small leaks use a small piece of paper, cardboard or wood . . . **NEVER USE YOUR HANDS.**
7. **KEEP YOUR EQUIPMENT CLEAN.** This will not only allow you to readily observe any signs of equipment wear or impending failure, but will also help in avoiding falls due to slippage on grease or oil.
8. Know your work area. Inspect for hidden holes, rocks, drop-offs or other obstacles and conditions which cause tractor to overturn.
9. Check transmission oil level weekly and refill if necessary.
10. Do not allow anyone to touch the steering controls while the unit is being lubricated or repaired.
11. Before starting the engine, make sure helper or observers stand clear of equipment. **NEVER** start the engine until the operator is properly seated on tractor, gears are in neutral position and parking brake is on.
12. **DO NOT TAMPER** with the relief valve setting. The relief valve is pre-set at the factory for maximum safety and steering ease. Altering setting may cause mechanical failure resulting in loss of steering and serious bodily injury to operator or others in area.
13. It is the **TRACTOR OWNERS RESPONSIBILITY** to make sure that all operators of the tractor are aware of the safe way to use the equipment and **ALL ITS CONTROLS.**
14. If safety decals become illegible or torn off, they should be replaced. See your tractor dealer for replacements.
15. This unit operates under high pressure. All parts are highly stressed and must be replaced with factory parts. The warranty is void if any parts other than factory parts are used.



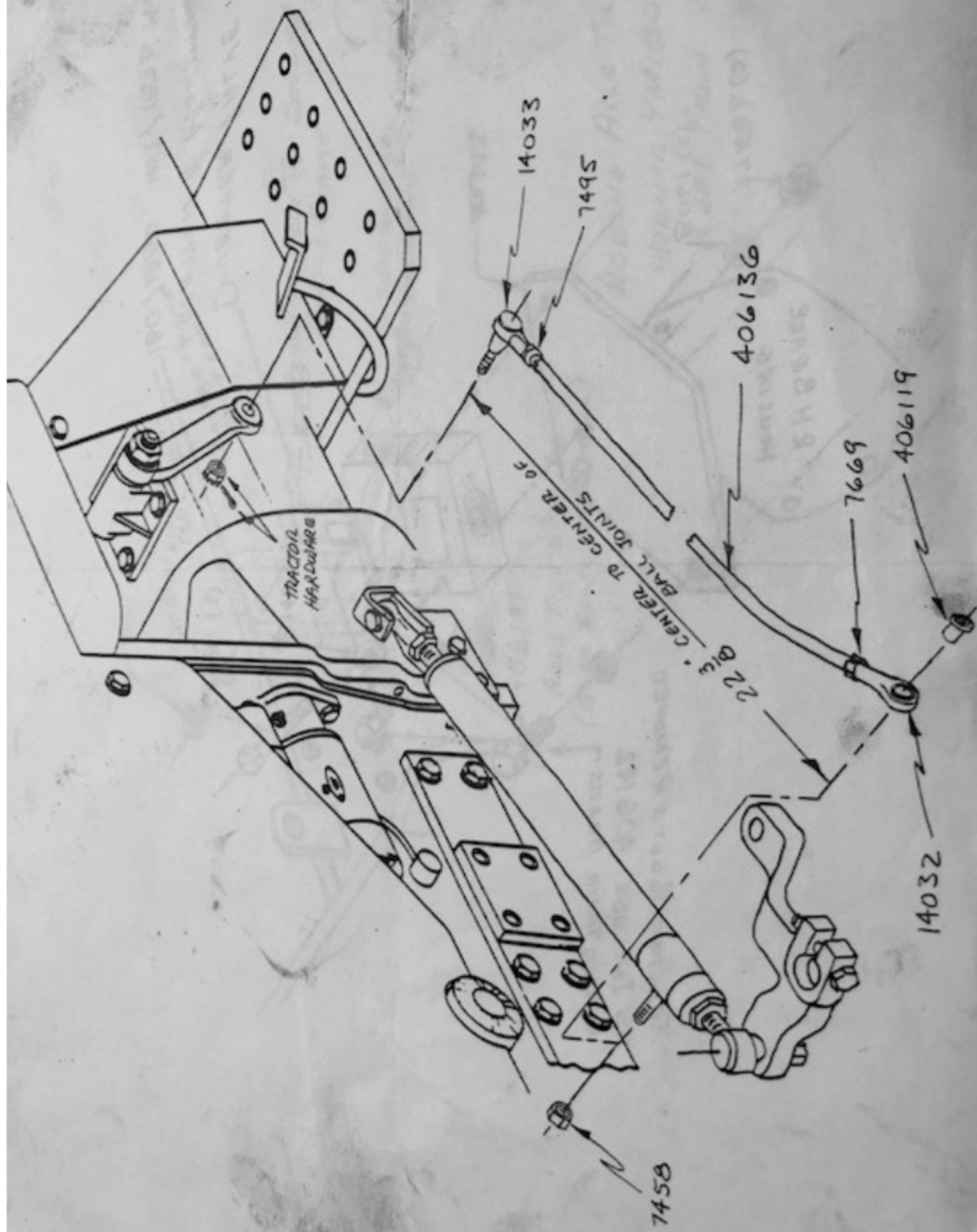
THIS SAFETY ALERT SYSTEM IDENTIFIES IMPORTANT
SAFETY MESSAGES IN THIS MANUAL.

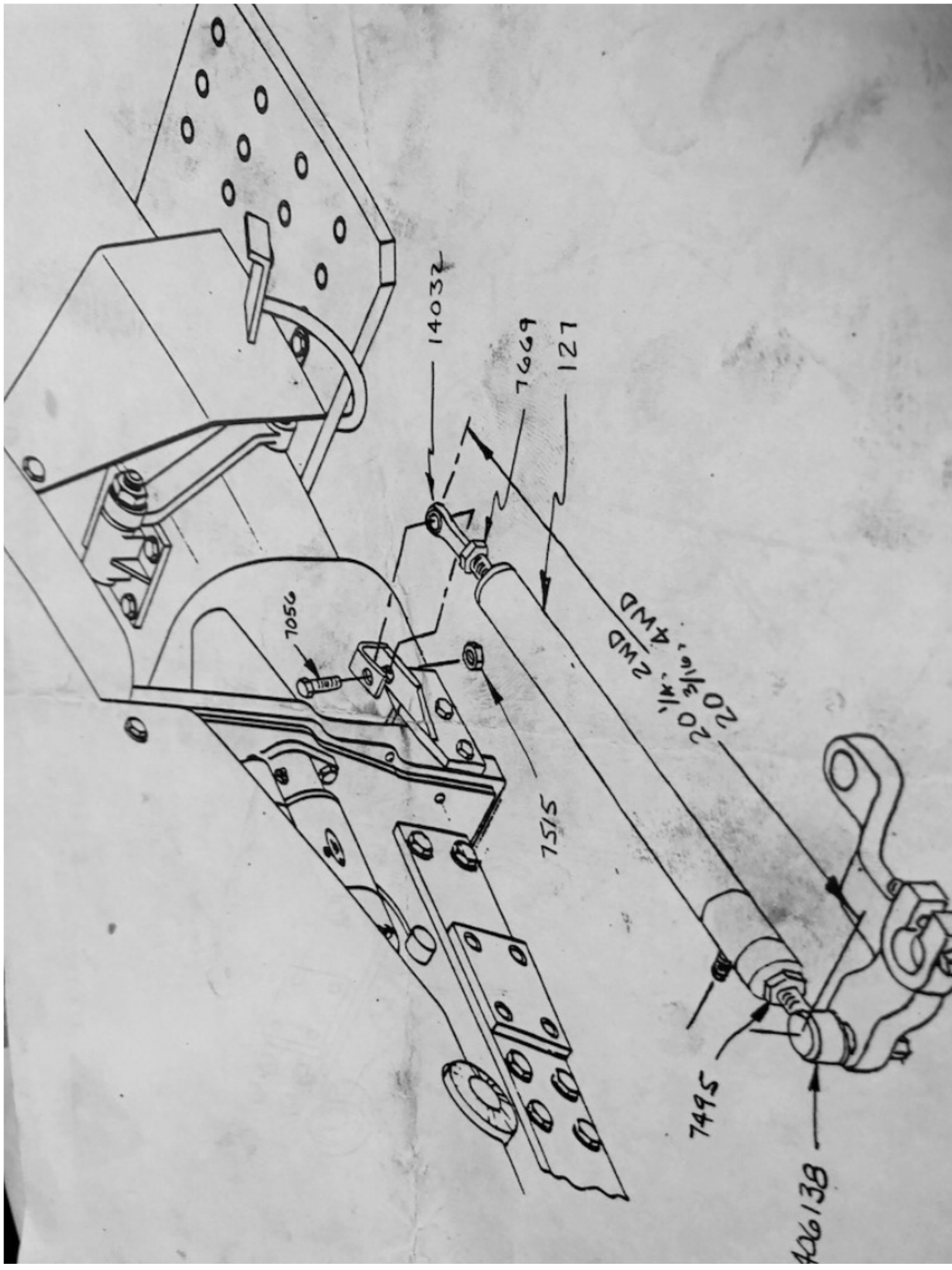


DIVERTER VALVE

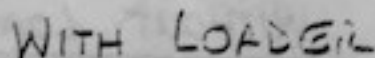
LOCATION & MOUNTING

180/180D, 187/187D MODELS

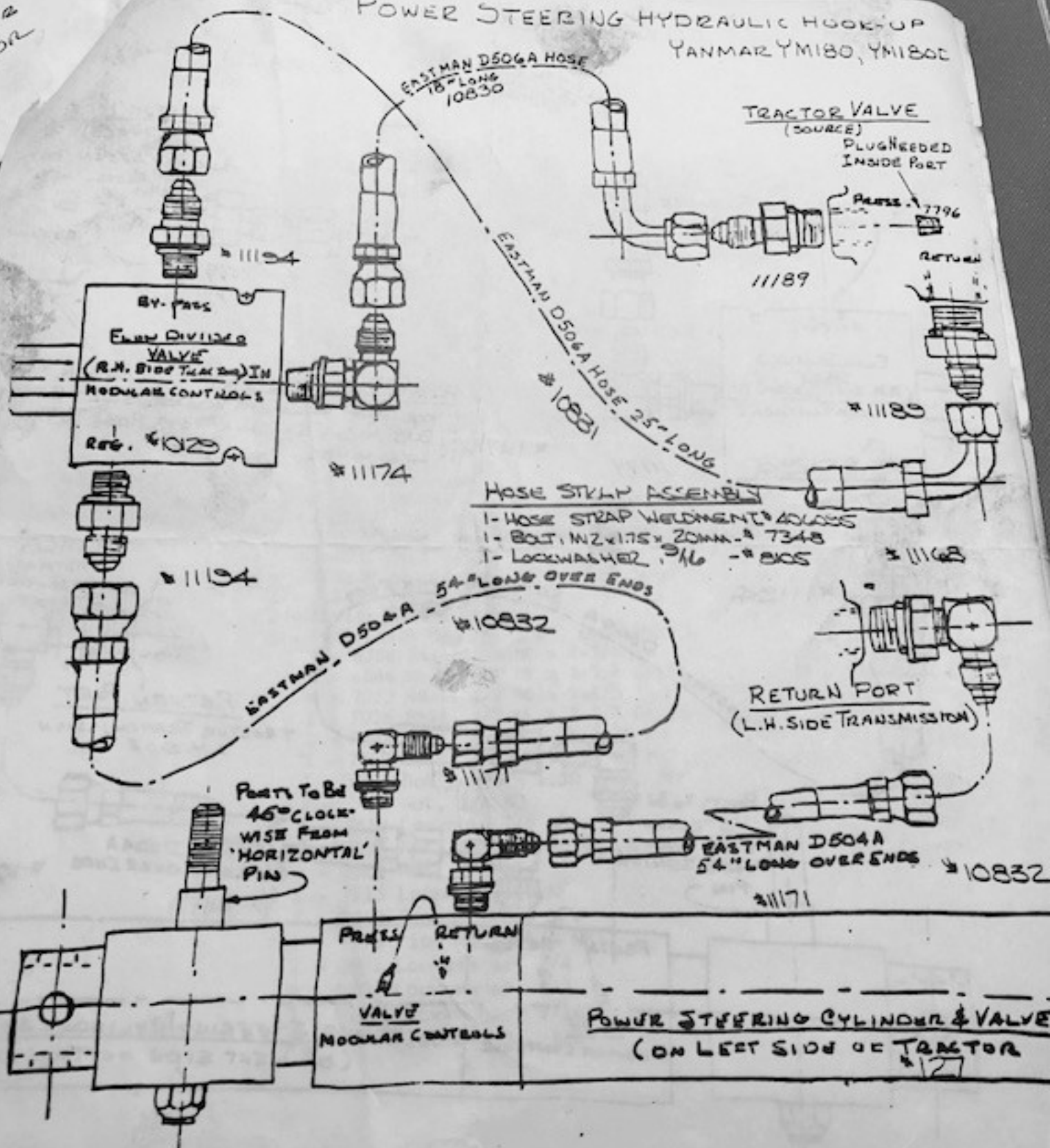




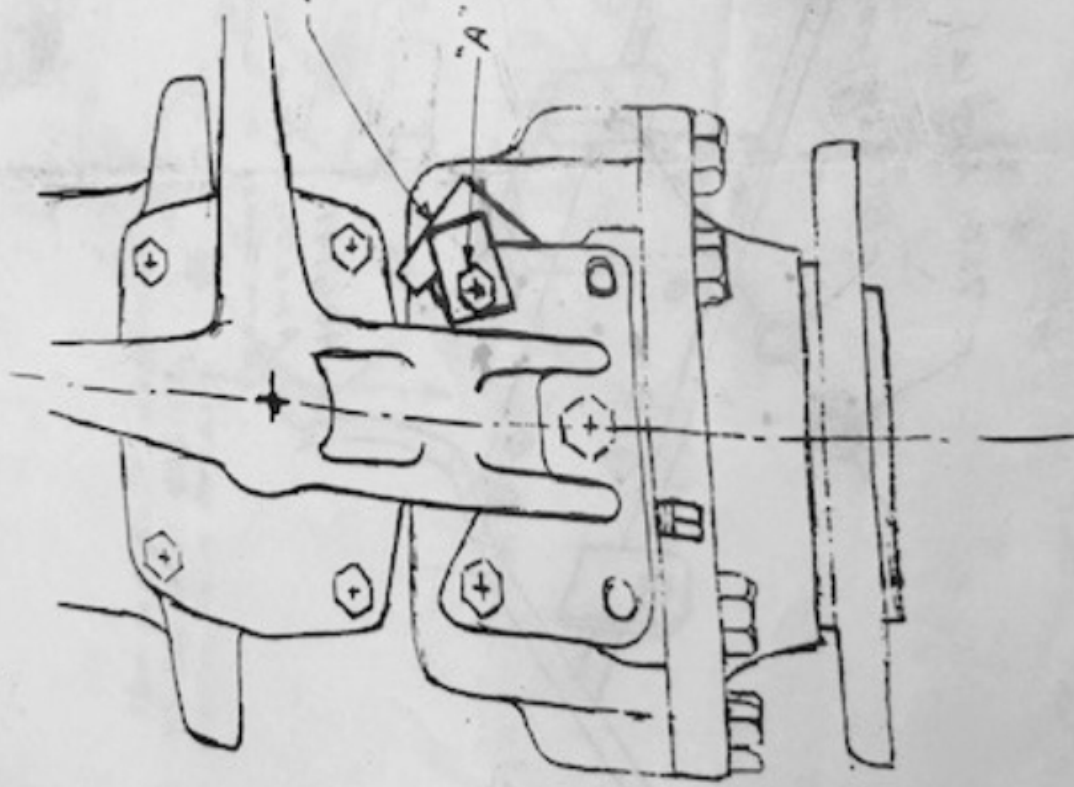
YANMAR YM180, YM180



POWER STEERING HYDRAULIC HOOK-UP YANMAR YM180, YM180C



WITHOUT LOADER



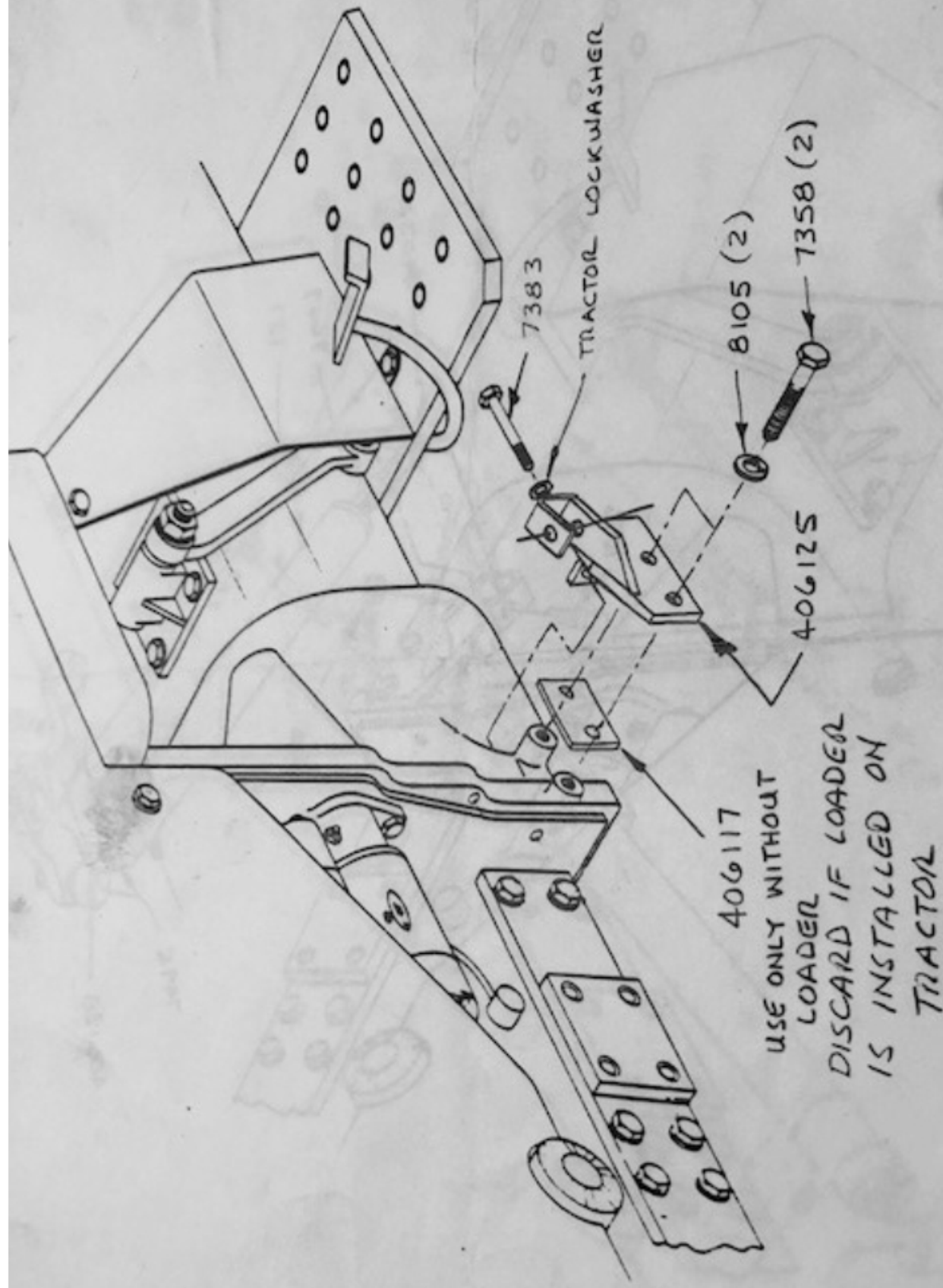
406130

WHEEL TURN STOP PLACED
HERE. REMOVE BOLT "A"
TO INCLUDE AXLE STOP
UNDER ITS HEAD.

LEFT FRONT WHEEL HUB.
WHEEL REMOVED. TOP VIEW.

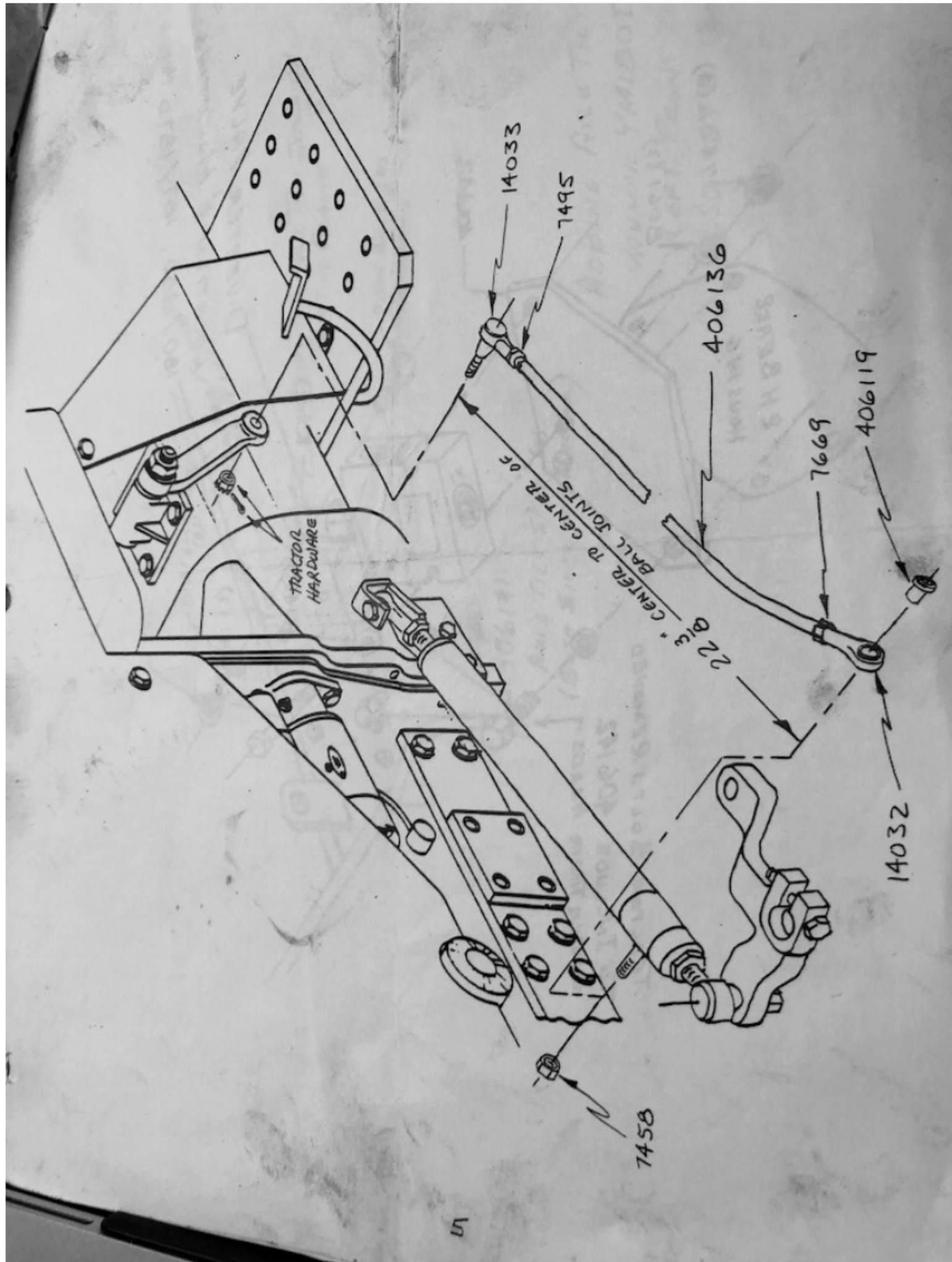
YANMAR YM180D TRACTOR

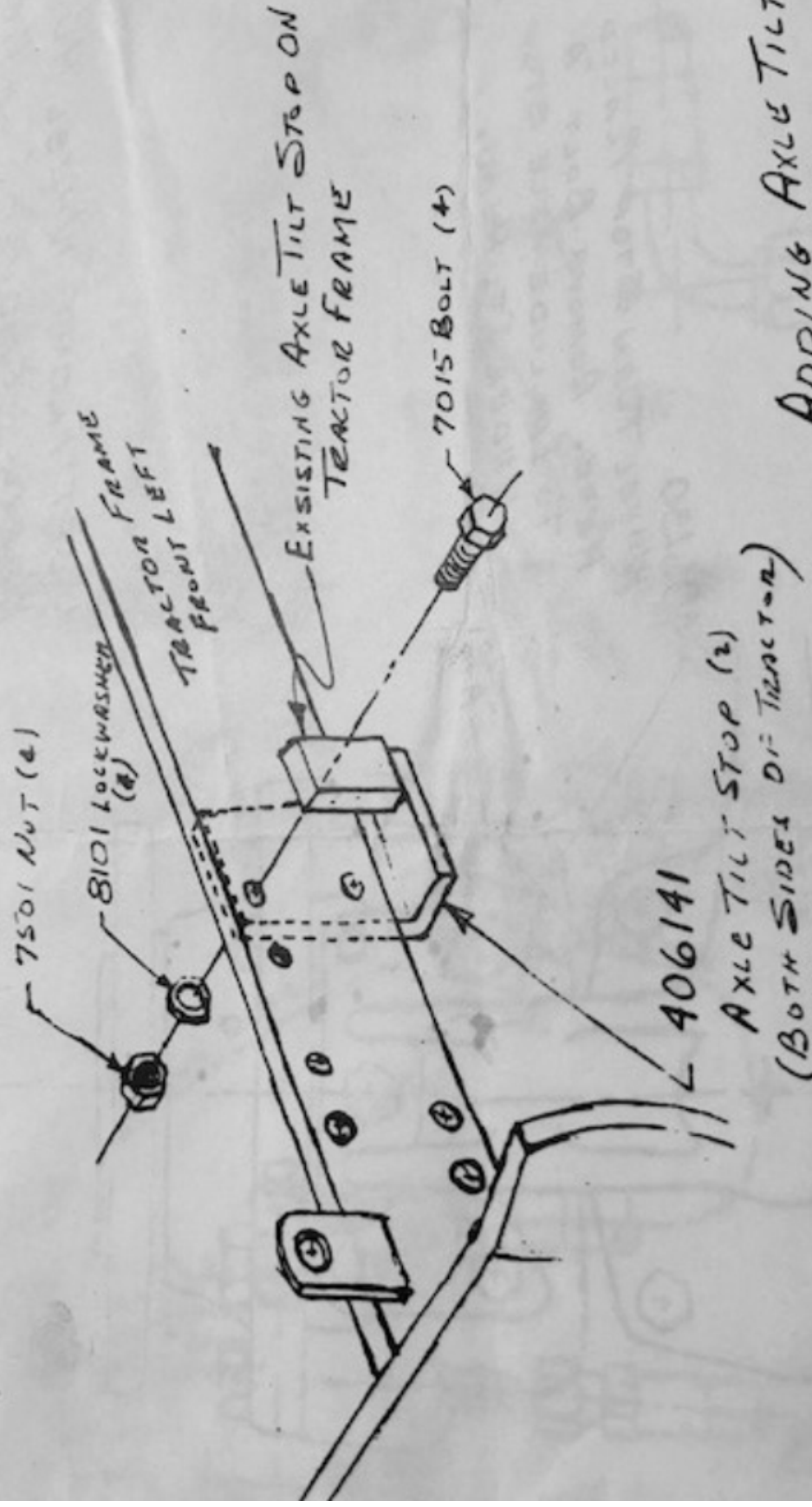
YANMAR YM187D TRACTOR



**ALL FORCES ARE TRANSMITTED
TO THIS POINT, MAKE SURE BRACKET FITS EXACTLY**







ADDING AXLE TILT STOP
 YANMAR YM180D TRACTOR
 LEFT FRONT VIEW
 ALSO 187D TRACTOR MODEL

