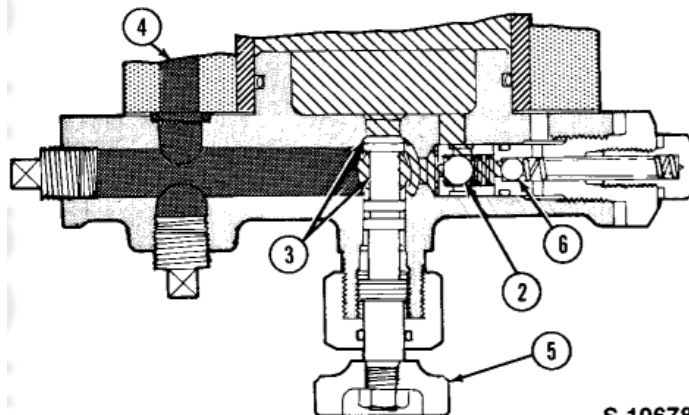


S-19768

**Figure 46**

**Flow Control Valve Components**

- |                     |                  |
|---------------------|------------------|
| 1. Valve Guide Bolt | 9. Spring        |
| 2. Sealing Washer   | 10. Ball         |
| 3. Shim             | 11. Guide        |
| 4. Spring           | 12. Gasket       |
| 5. Ball             | 13. Valve — Stem |
| 6. Body             | 14. Body         |
| 7. Seal             | 15. Nut          |
| 8. O-Ring           | 16. Knob         |

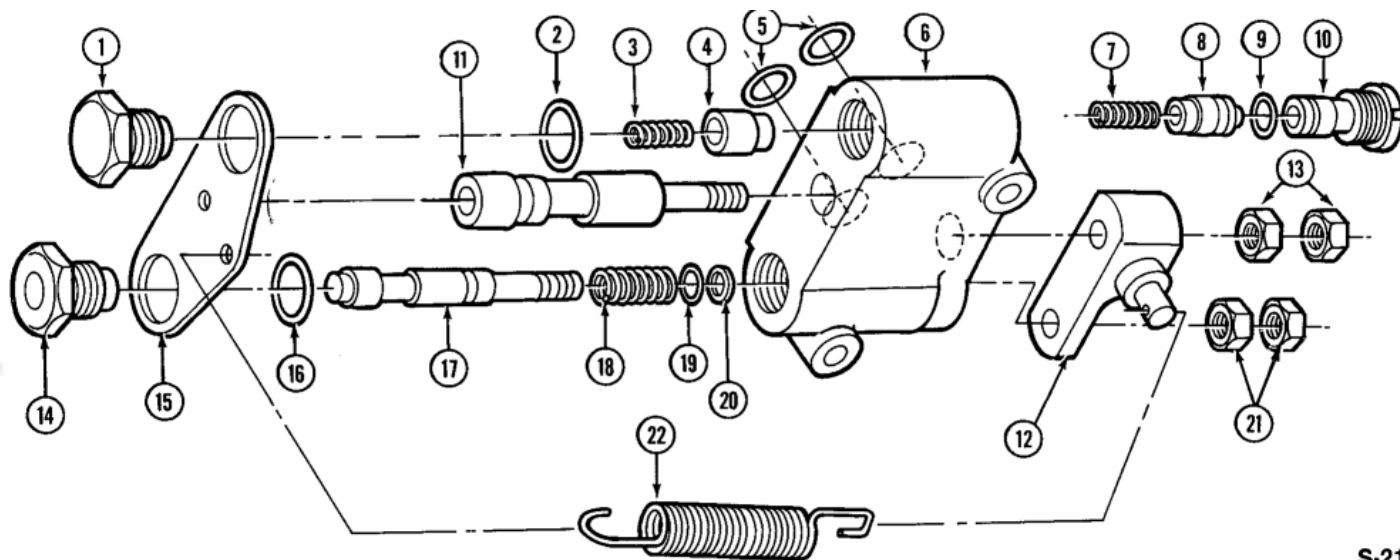


S-19678

**Figure 15**

**Flow Control Valve Assembly  
(Needle Valve Shown in Closed Position)**

- |                                |                               |
|--------------------------------|-------------------------------|
| 1. Flow Control Valve Assembly | 5. Needle Valve Control Knob  |
| 2. Check Ball                  | 6. High Pressure Safety Valve |
| 3. Needle and Seat             |                               |
| 4. Inlet Passage               |                               |



S-21239

**Figure 53**

**Single Lever Control Valve Components  
(Model 1910 Prior to Serial Number UP 05890)**

- |                        |                        |                       |                         |
|------------------------|------------------------|-----------------------|-------------------------|
| 1. Unload Valve Plug   | 7. Check Valve Spring  | 13. Nuts              | 18. Poppet Valve Spring |
| 2. O-Ring              | 8. Check Valve         | 14. Poppet Valve Seat | 19. O-Ring              |
| 3. Unload Valve Spring | 9. O-Ring              | 15. Plate             | 20. Ring                |
| 4. Unload Valve        | 10. Check Valve Seat   | 16. O-Ring            | 21. Nuts                |
| 5. O-Rings             | 11. Control Valve Seat | 17. Poppet Valve      | 22. Spring              |
| 6. Body                | 12. Valve Plate        |                       |                         |