



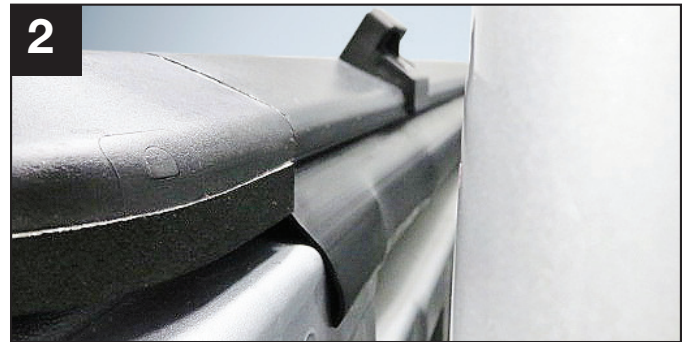
TRiLOGY™

Tri-Fold Tonneau Cover Installation Instructions

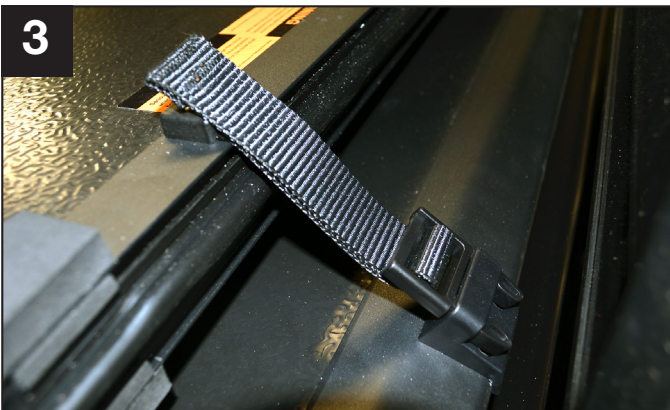
BEFORE YOU BEGIN, inspect your LEER Trilogy Tri-Fold Tonneau Cover for any damage or missing parts. Your cover comes fully assembled and requires no tools to install. If you have any issues, please contact your authorized LEER dealer from whom you purchased the cover.



1.) Wash truck bed. Place the cover on front of truck bed (cab end).



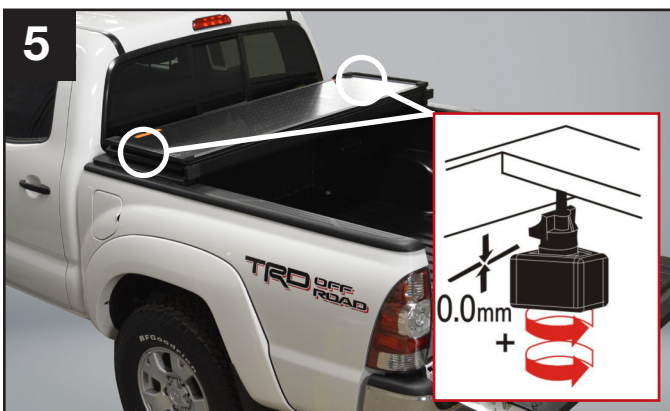
2.) Place dust seal on cover over truck bed front rail (between cab and truck bed). *Note: Select models such as the '05 Toyota Tacoma and the '05 Honda Ridgeline have a bulb style dust seal.*



3.) Undo both tie-down straps.



4.) With tailgate closed, unfold cover fully. Adjust position over the truck bed for proper cab/tail alignment before securing latches.



5.) Carefully refold cover without shifting its position on the truck bed. Place front cab latch lip under metal bed rail. Hand tighten the latch until lip comes into direct contact with the metal bed rail, then add two full turns. Fit should be snug, but do not over-tighten. **DO NOT** use a wrench or other tool to tighten the latch mechanism.



6.) With tailgate open and front cab latches secure, unfold cover completely.



TRiLOGY™

Tri-Fold Tonneau Cover Installation Instructions



7.) To secure cover in the "closed" position, attach tailgate latch by hooking lip of latch under the side metal bed rail and rotating handle downward to the locked position. Repeat on opposite side. Close and lock truck tailgate.



8.) **TRUCKS WITH UTILITY TRACKS:** Slide aluminum blocks into utility track of bed. Position each block, 4 total, where the cab and tailgate latches are located. Tighten set screw with allen wrench. Secure latches on blocks instead of metal bed rail on truck.

i IMPORTANT INFORMATION



Tailgate latches can be adjusted by turning latch hook clockwise to tighten and counter clockwise to loosen.



Latch mechanism must be stowed in the latch pocket prior to folding the cover to the "open" position. Failure to properly stow the latch mechanism may damage cover surface and voids warranty.



DO NOT remove foam trapezoid shaped blocks. They protect panel surface when folding. Removal voids warranty.

! WARNING:

- Never travel with the cover in the partially open position; i.e., two panels closed, one panel open. Cover must be fully "closed" or fully "open" during transit.
- While driving with the cover in the "open" position, both front cab latches must be secured to bed rails and tie-down straps fastened.
- While driving with the cover in the "closed" position, all four latches (two front cab latches and two rear tailgate latches) must be secured.
- When cover is in the "closed" position, never haul cargo taller than the truck bed sidewall. This may result in panel hinge hyperextension and is NOT covered by warranty. Cover should rest flat the entire length of truck side rail.
- Apply paint protectors (provided) to inside metal bed rails at each latch position to prevent paint damage.
- Remove any snow, ice or debris from cover top before folding.
- When vehicle is being towed or transported backward, remove cover entirely.