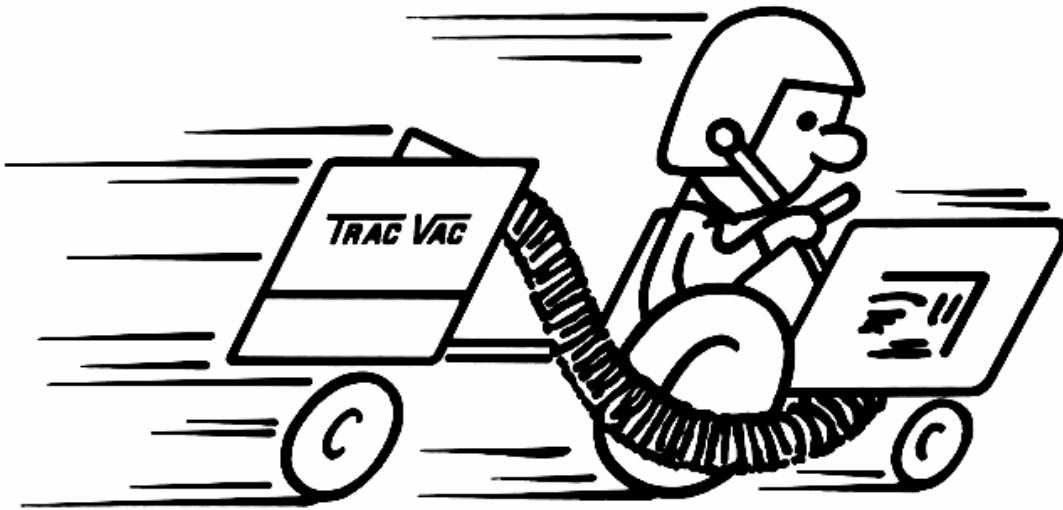


TRAC VAC

Model 560

Model 580

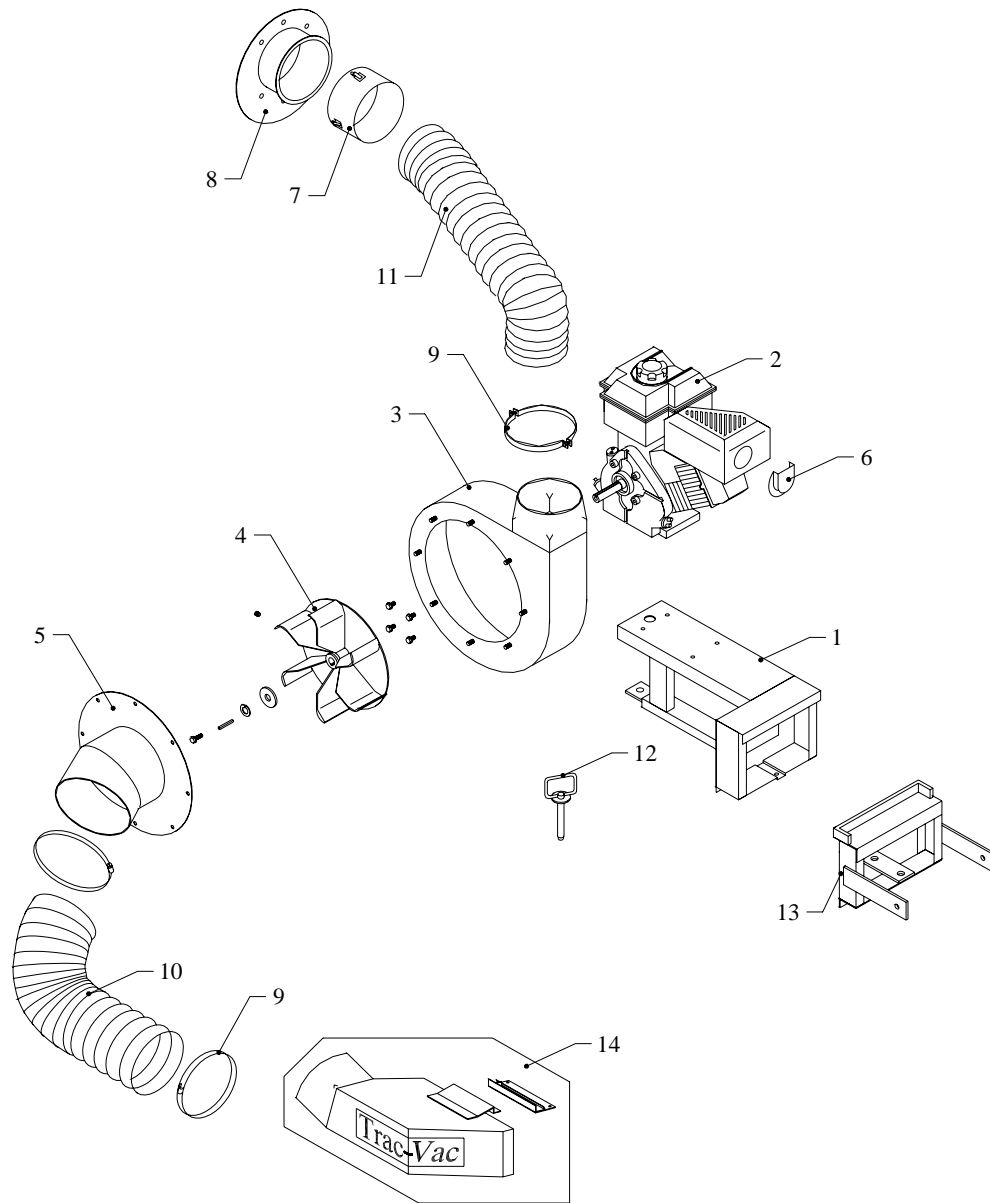


Operating and Assembly Manual

**Palmor Products Inc.
5225 Serum Plant Road
Thorntown, IN 46071**

2/21/2006

Copyright © 2005 Palmor Products Inc.



MODEL 560 TRAC VAC

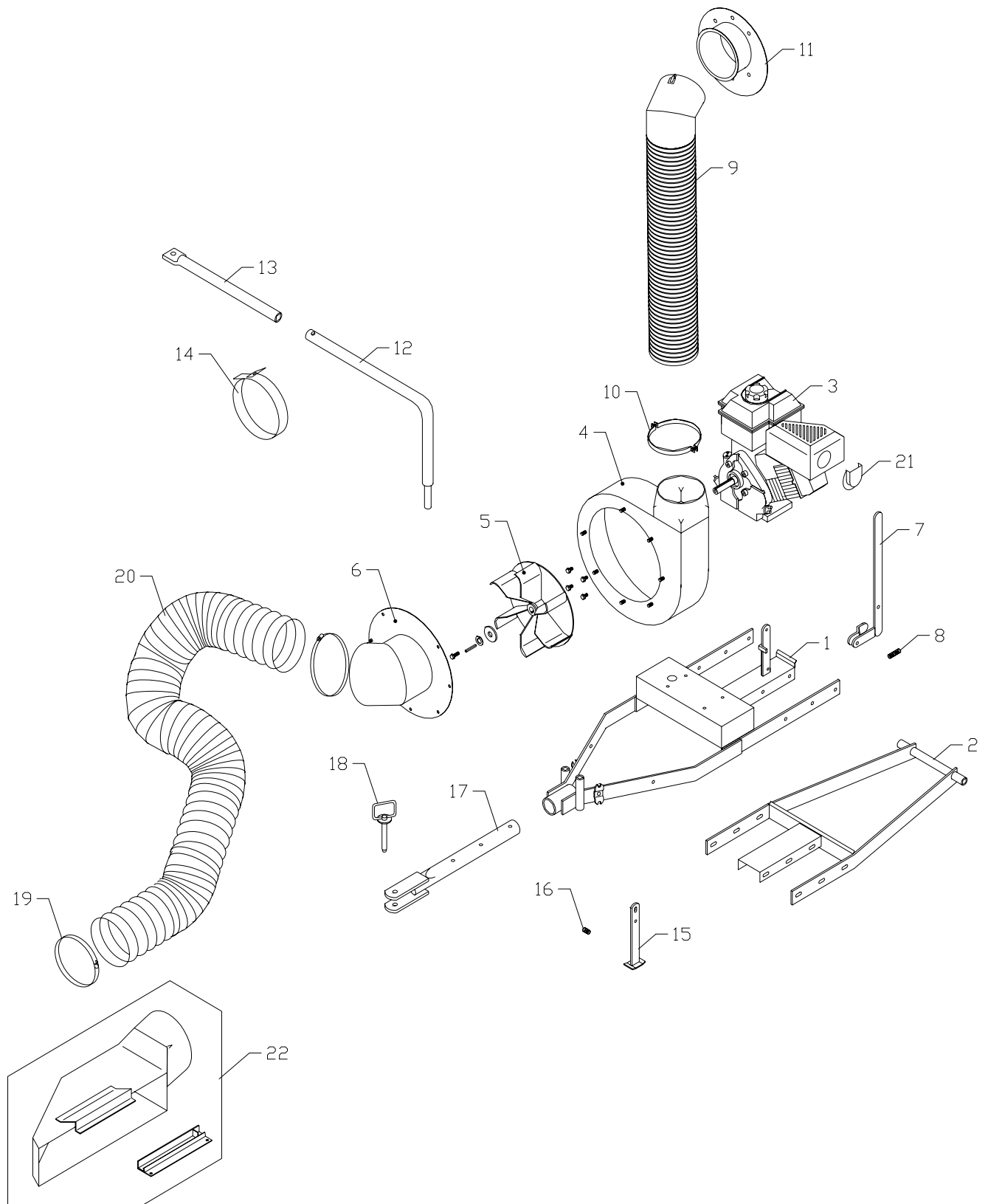
KEY	PART #	DESCRIPTION	KEY	PART #	DESCRIPTION
1	56010	Frame, RH	7	56060	Hose Connector, 6"
	56011	Frame, LH	8	56070	Cart Connector, 6"
	56012	Frame, Elec.	9	56102	Band Clamp, 6"
2	56021	Engine, 5.5 HP INTEK	10	45102	Intake Hose, 6" x 60"
	56022	Engine, 5.5 Honda	11	56103	Exhaust Hose, 6" x 48"
	56018	Engine, 6.5 Intek Pro	12	58104	Hitch Pin
3	56030	Turbine Housing	13	*****	Hitch (tractor specific)
	46242	Turbine Housing, 560 Pro	14	*****	Chute, (tractor specific)
4	56040	Turbine		58104	Key Switch (elec. only)
	46253	Turbine , 1" Bore		56029	Turbine Spacer (Honda & elec.)
5	58050	Inlet, 580			
6	86115	Muffler Deflector			

7-16-05

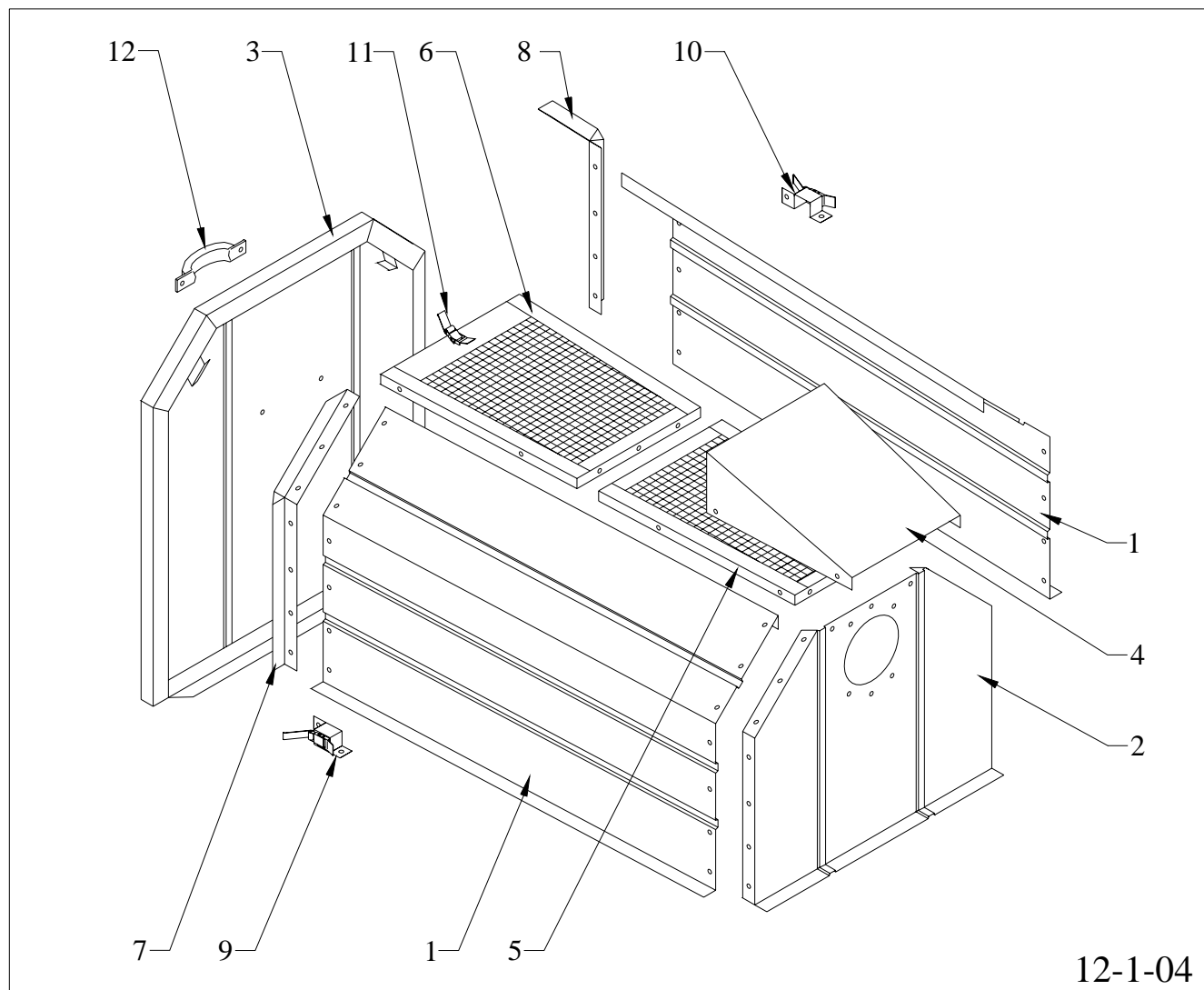
MODEL 580 Trac-Vac Parts List

Key	Part #	Description
1	58047	Main Frame
	58045	Main Frame, elec.
2	58048	Sub Frame
	58046	Sub Frame, 1" axle
3	56021	Engine, 5.5 HP Intek
	56022	Engine, 5.5 HP Honda
	56018	Engine, 6.5 HP Intek
4	56030	Turbine Housing, 6"
	46242	Turbine Housing
5	46253	Turbine, 1" Bore
	56040	Turbine, 5 HP
6	58050	Inlet, 6" small back
	58036	Inlet, 6" big back
7	58061	Latch
8	58062	Latch Spring
9	58040	Exhaust Hose (Metal)
10	45101	Metal Hose Clamp
11	56070	Cart Connector, 6"
12	58023	Support Arm, 580
13	58022	Support Arm Extension, 15"
14	58072	Hose Support Strap
15	58071	Stand
16	32108	Stand Spring
17	58063	Drawbar
18	58104	Hitch Pin
19	56102	Band Clamp
20	58101	Intake Hose, 6" x 90"
21	560221	Muffler Deflector
22	***-6	Chute Assembly (Deck Specific)
	45131	Decal, 2 x 8 Trac-Vac White
	45133	Decal, Warning Stop Engine
	58095	Decal, 580 Serial #
	86027	Spacer, (580 elec.)
	56029	Turbine Spacer, (Honda & elec.)
	18110	Key Switch (elec. only)

MODEL 580 TRAC VAC



Model 348/368 Cart Covers



12-1-04

Model 280/348 Cart Cover

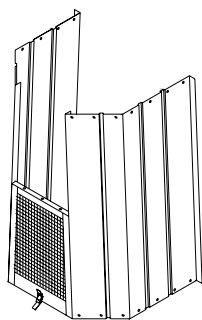
Key	Part No.	Description
1	28047	Side Panel
2	28030	Front Panel
3	28236	Tailgate
4	28232	Deflector
5	28230	Front Screen
6	28231	Rear Screen
7	28200	Rear Angle RH
8	28201	Rear Angle LH
9	28102	Latch Ass'y RH
10	28103	Latch Ass'y LH
11	28105	Top Latch
12	28104	Handle

Model 280/368 Cart Cover

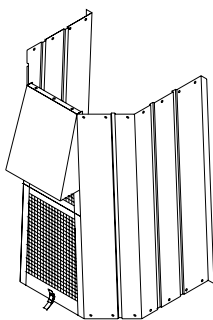
Key	Part No.	Description
1	28059	Side Panel
2	28035	Front Panel
3	28238	Tailgate
4	28235	Deflector
5	28234	Front Screen
6	28233	Rear Screen
7	28100	Rear Angle RH
8	28101	Rear Angle LH
9	28102	Latch Ass'y RH
10	28103	Latch Ass'y LH
11	28105	Top Latch
12	28104	Handle

Model 280 Cart Cover Assembly Instructions

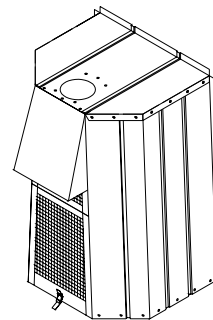
NOTE: Do not tighten any bolts until the end of construction.



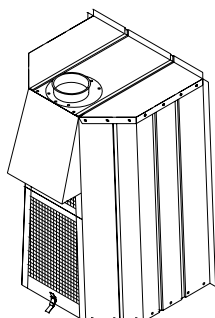
Place side panels on end with decal outward and about a foot apart at top. Place screen with latch, (rear screen), on end between sides with latch outward and to the floor. Attach to sides with 1/4 x 1/2 bolts.



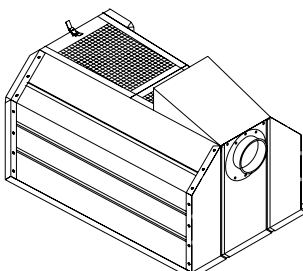
Place screen without latch, (front screen), on top of rear screen and between sides. Secure to rear screen with 1/4 x 1/2 bolts. Slip deflector between sides and front screen with tapered end up. Secure with 1/4 x 1/2 bolts.



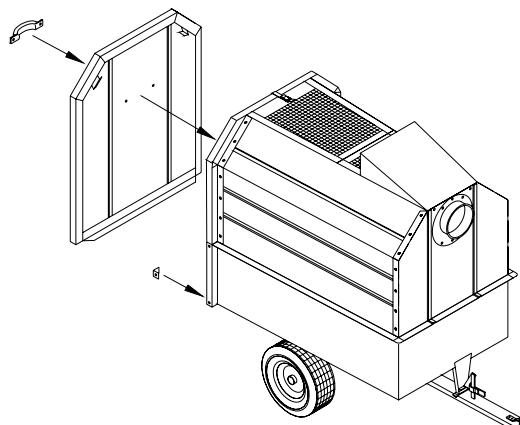
Place front on sides with flanges on outside. Start corner bolts in sides and screen before tightening. Start bolts at top & bottom of side panels and work your way toward center, with truss head, round, to the outside.



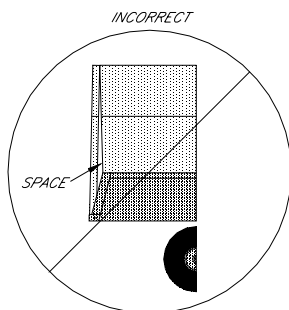
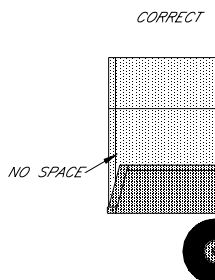
Place connector, (packed in with vac), on outside of front with the lip to the outside. Attach with 1/4 x 1/2 bolts.



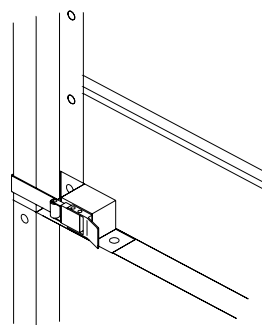
Place cover flat on floor and attach angles to side panels at rear of cover with angles on the outside of cover. Secure with 1/4 x 1/2 bolts. Start at the top and second hole from the bottom, (latch uses bottom hole), then work towards the center of the panels. Bolts truss, (round), head should be to the inside of cart.



Attach handle to tailgate on smooth side. Place cover on cart. Make sure the two lower black angle brackets have been installed on the lower rear of the cart. Fit tailgate to the cover using the top latch and lower brackets only.



Gently move cover to the rear to insure contact between the tailgate and cover, (along entire contacting surface). Center front on cart. Mark hole locations, and drill 9/32" holes. Attach cover with 1/4 x 1/2 bolts.



Place latch on each side of cart with tongue of latch to rear. Attach to side panel and cart with 1/4 x 1/2 bolts. Tighten all hardware.

Operation

1. Follow engine manufacturer's instructions in preparing engine for operation.
2. Inspect area to be vacuumed and pick up all harmful objects and litters.
3. For best vacuuming results, operate tractor at manufacturer's recommended speed for best cutting. If grass is high, mow and vacuum the second time.
4. When mowing, keep discharge chute to the outside of the cutting area for better cut of grass and efficient pickup of grass clippings and leaves.
5. Your vacuum engine is preset to run approximately 3800 RPM no-load. Do not slow engine down. Optimum vacuum is at 3600 RPM.
6. Do not overload cart. When cart is filled, shut off vacuum engine and disconnect hose at snap disconnect, remove tailgate and dump.
7. When operating tractor on slope or grade, exercise much caution. Do not cut across grade or slopes. Mow directly up or down hill.
8. Periodically check all hardware for tightness.
9. Listen for unusual vibration of engine or air turbine. If excessive vibration is present, STOP engine and check for damaged blade.
10. When removing clogs, SHUT OFF tractor engine.
11. Always shut off tractor engine and vacuum engine before servicing.
12. Replace deflector shield when discharge chute is removed.

TRAC VAC WARRANTY POLICY

Palmor Products, Inc. will repair or replace, free of charge, any part, or parts that are defective in material or workmanship or both for a period of one year residential use, and 90 day's for commercial and rental use. The purchaser will pay transportation charges on parts submitted for replacement under warranty. For warranty service, contact your local dealer from whom the unit was purchased. There are no other express or implied warranties. Some states do not allow limitations on how long an implied warranty lasts, and some states do not allow the exclusion or limitation of incidental or consequential damages, so the above limitation and exclusion may not apply to you. This warranty gives you specific legal rights and you may also have other rights, which vary from state to state.

PALMOR PRODUCTS, INC.

5225 Serum Plant Rd.

Thorntown, IN 46071

Phone: 1-800-Trac-Vac

Web Page: www.trac-vac.com E-Mail: palmor@trac-vac.com