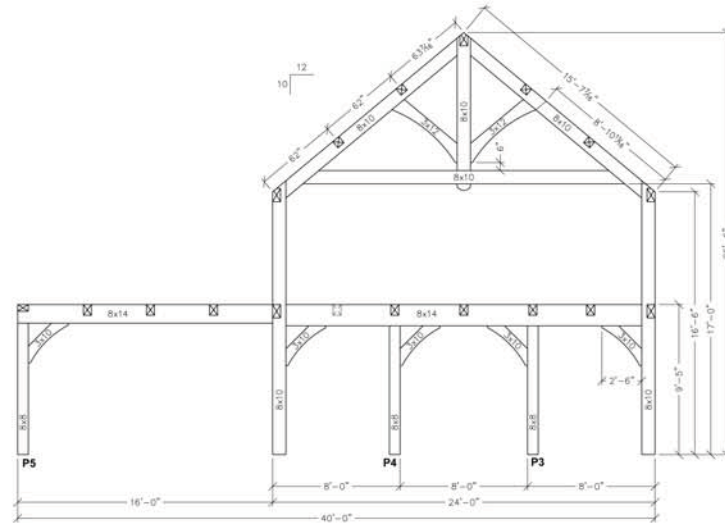
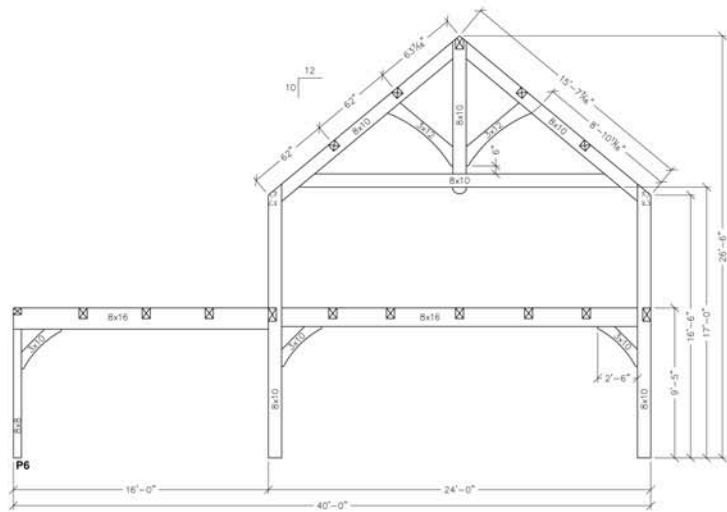


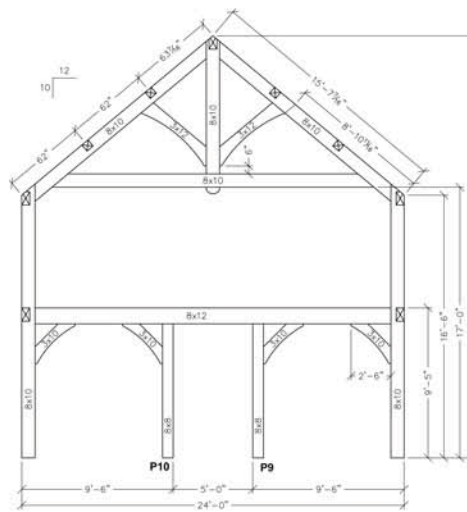
B1 East Elevation  
11.1 1/4" = 1'-0"



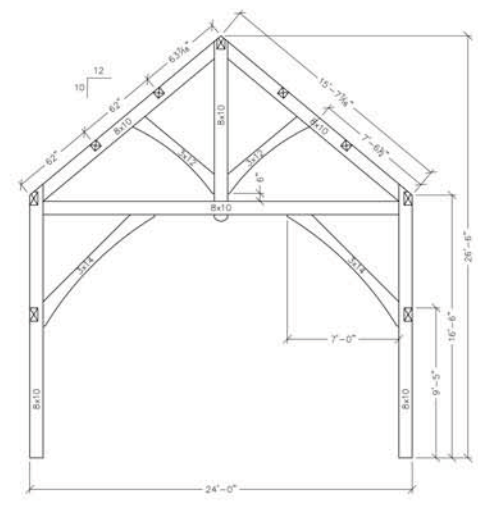
B2 West Elevation  
11.1 1/4" = 1'-0"



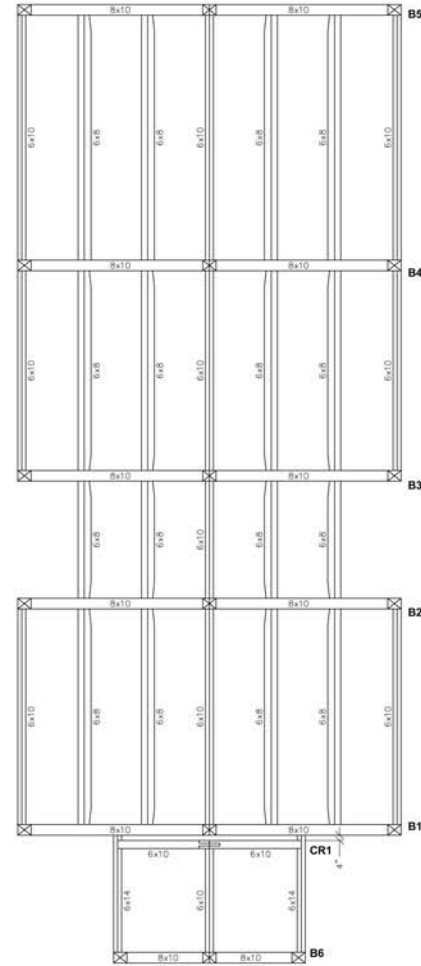
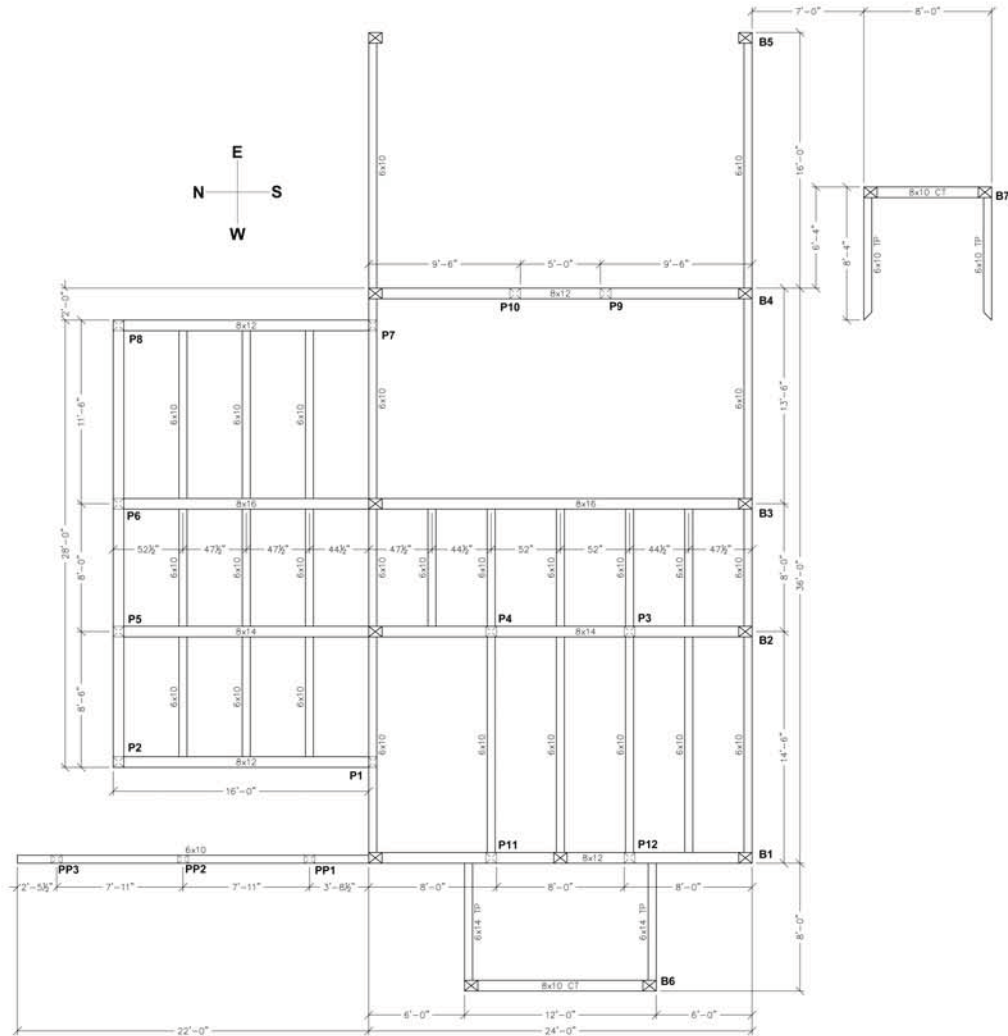
B3 West Elevation  
11.1 1/4" = 1'-0"



B4 West Elevation  
11.1 1/4" = 1'-0"



B5 West Elevation  
11.1 1/4" = 1'-0"



- Timber Notes:**
- All timber is #1 Grade, Douglas Fir, Kiln Dried (KD).
  - Surfaced Four Sides (S4S), Boxed Heart (BH), Full Size unless otherwise specified.
  - Decorative Edge.
  - Shelved Edge.
  - Housed Braces.
  - Oiled.
  - Joint Drawings.
  - Roof.
  1. Live Load 25 Lbs.
  - 7.1.1. Snow 20 Lbs.
  - 7.1.2. Wind 5 Lbs. (Est.)
  2. Dead Load 10 Lbs. (Est.)
  - Floor.
  - 8.1. Live Load 40 Lbs.
  - 8.2. Dead Load 20 Lbs.

11.0 Post Placement / Joist Layout  
1/4" = 1'-0"

11.0 Roof Layout  
1/4" = 1'-0"