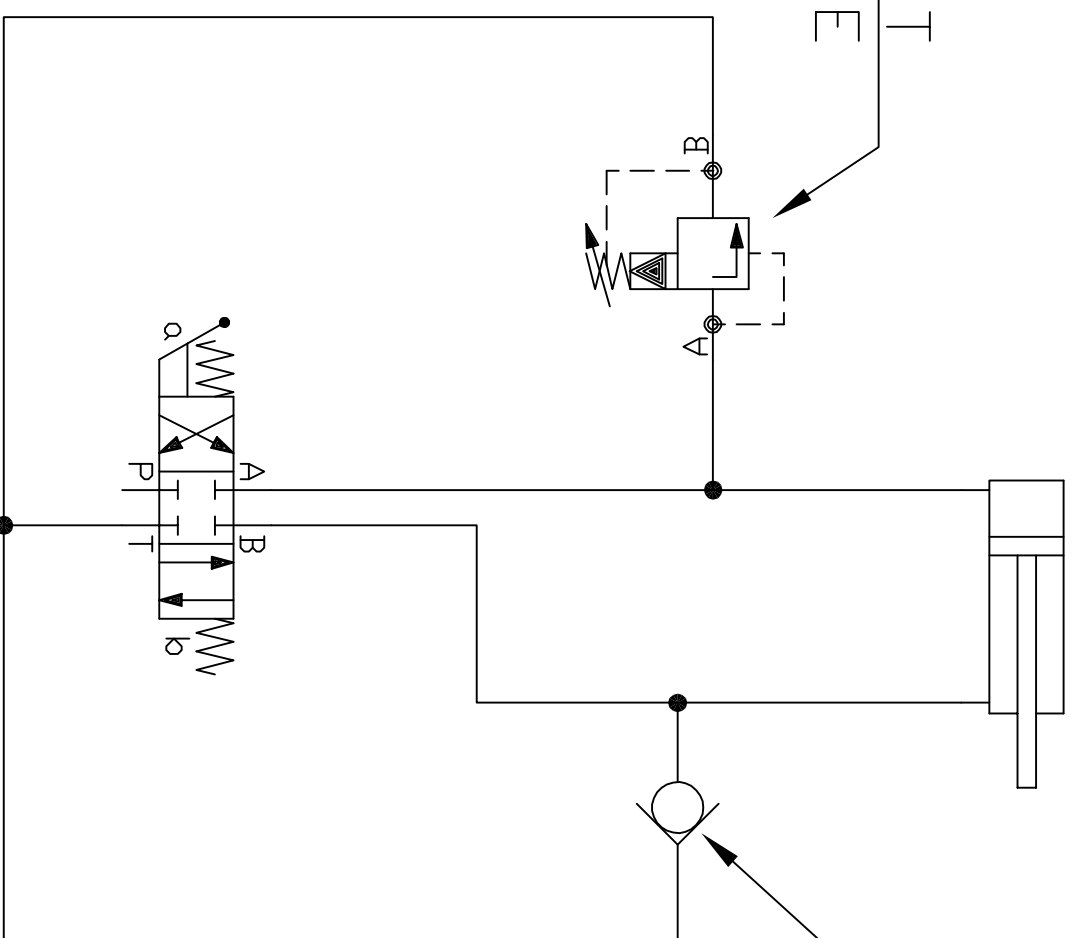


CLOSE
← OPEN →

RELIEF TO PROTECT
THUMB FROM DAMAGE



ANTI-CAV CHECK
5 PSI CRACK OR LESS
THIS ALLOWS OIL TO BE
DRAWN INTO THE THUMB
CYLINDER WHEN OIL IS BEING FORCED
OVER THE RELIEF