

## CLUTCH RELEASE BEARING

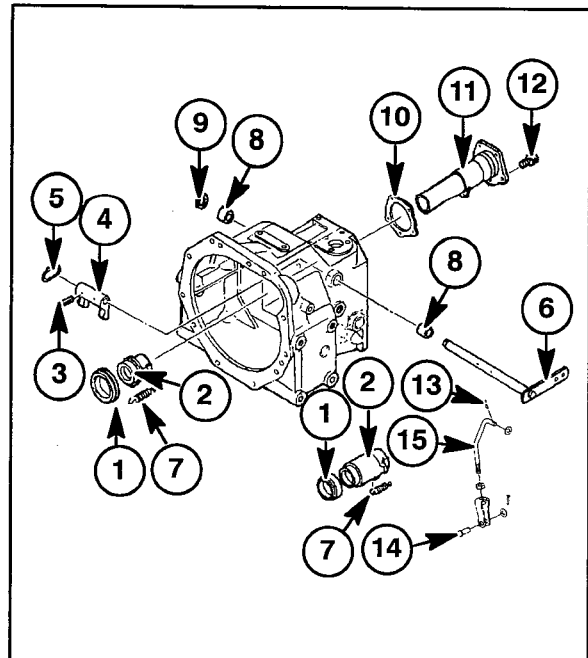
### Description

The clutch release bearing, 1, is a pre-lubricated ball bearing and is mounted on the sliding hub, 2, which is supported on the front input shaft retainer, 11.

A fork, 4, mounted on the cross shaft, 6, is engaged with the bearing, 1, and hub assembly, 2.

On tractors equipped with single clutch, initial movement of the clutch pedal causes the release bearing to come in contact with the release levers. Further movement of the clutch pedal disengages the clutch and drive to the transmission input shaft and stops the transmission and PTO drive.

On tractors equipped with the double clutch, depressing the clutch pedal approximately half-way disengages the transmission drive, but allows the drive to continue to the PTO. Further movement of the clutch pedal causes the clutch to disengage the drive to the PTO.



20

### Removal

1. Separate the tractor between the engine and the clutch housing. See "Separating the Tractor".
2. Remove the cotter pin, 13, and clevis pin, 14, and remove the adjustment rod, 15, from the clutch release cross shaft, 6.
3. Remove the release bearing, 1, and hub return spring, 7, and slide the bearing and hub, 2, off the support, 11.
4. Using a suitable puller and step plate, remove the bearing, 1, from the hub, 2.

1. Bearing
2. Hub (short - HST)
3. Pin
4. Fork
5. Safety Wire
6. Cross Shaft
7. Return Spring
8. Bushing
9. Snap Ring
10. Gasket
11. Retainer
12. Bolt
13. Cotter Pin
14. Clevis Pin
15. Adjustment Rod

### Inspection

Rotate the bearing by hand and observe the following conditions:

1. Abnormal noise.
2. Uneven rotation when turned slowly by hand.
3. Excessive free play.
4. Scoring on the inner surface.
5. Indications of lubricant leakage at the oil seal.

## Assembly

1. Install the bearing, 1, onto the hub, 2.
2. Install the bearing, 1, and hub, 2, onto the support, 11, and install the return spring, 7.
3. Install the adjustment rod, 15, on the clutch release cross shaft, 6, and attach with the cotter pin, 13, and clevis pin, 14.

## CLUTCH LINKAGE COMPONENTS

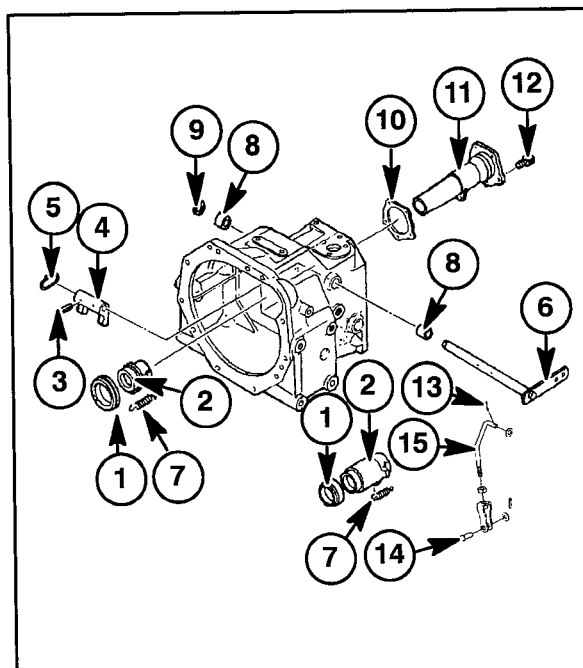
### Op. 18 100

#### Clutch Cross Shaft Bushings Removal

1. Separate the tractor between the engine and the clutch housing. See "Separating the Tractor".
2. Remove the cotter pin, 13, and clevis pin, 14, and remove the adjustment rod, 15, from the clutch cross shaft, 6.
3. Remove the snap ring, 9, from the right hand end of the cross shaft, 6.
4. Remove the safety wire, 5, and roll pin, 3, from the fork, 4, and cross shaft, 6. Withdraw the cross shaft from the clutch housing.
5. Use a suitable driver, remove the bushings, 8, from the clutch housing.

#### CLUTCH CROSS SHAFT BUSHINGS ASSEMBLY

Reassembly of the cross shaft generally follows the removal procedures in reverse.



1. Bearing
2. Hub
3. Pin
4. Fork
5. Safety Wire
6. Cross Shaft
7. Return Spring
8. Bushing
9. Snap Ring
10. Gasket
11. Retainer
12. Bolt
13. Cotter Pin
14. Clevis Pin
15. Adjustment Rod

21