


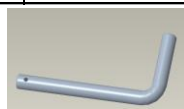





K2X BACKHOE INSTRUCTION

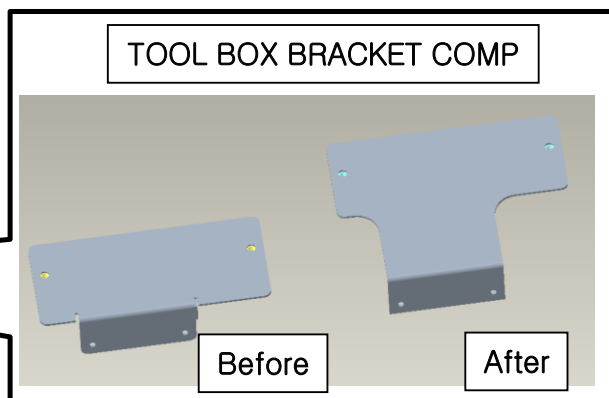
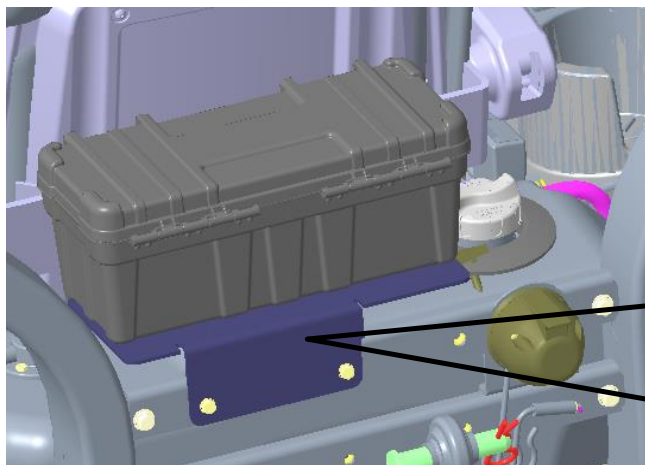
Assembly instructions

R&D CETER

1. Check the packaging parts as shown in the picture below

NO	PART NO	DESCRIPTION	QTY	SPEC
1	-	BACKHOE ASSY	1	
				
2	9020-400-100-0	RAIL FRAME COMP	1	
				
3	9020-400-200-1	BRACKET,HANGER	2	
				
4	9020-400-210-0	PIN,SUB FRAME	2	
				
5	9020-400-220-0	STAY	2	
				
6	-	SEAT ASSY	1	
				
7	9020-701-110-0	BRACKET COMP, TOOL	1	
				
8	V201-461-216-0	BOLT , HEX	1	M12X160L
9	8070-200-017-0	NUT , HEX/NYLON	1	M12
10	V201-461-604-5	BOLT , HEX	2	M16X45L
11	V201-461-606-0	BOLT , HEX	4	M16X60L
12	V401-160-016-0	WASHER , SPRING	6	M16
13	V301-360-016-0	NUT , HEX	6	M16
14	V203-462-006-0	BOLT , HEX FINE	6	M20X60L
15	V203-462-007-5	BOLT , HEX FINE	2	M20X75L
16	V331-360-020-0	NUT , HEX FINE	8	M20
17	V401-160-020-0	WASHER , SPRING	8	M20
18	V411-160-012-0	WASHER , PLAIN	2	M12
19	V500-193-002-0	PIN , SPLIT	2	Ø3X20L

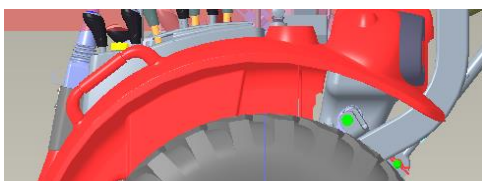
2. Replace TOOL BOX BRACKET COMP



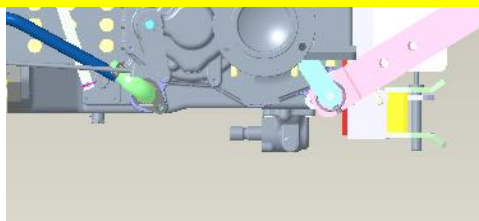
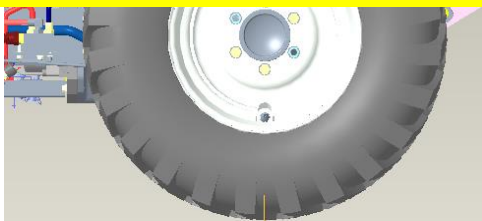
3. Fix Top Link



4. Disassemble both tires



It can be assembled without disassembling the tire.

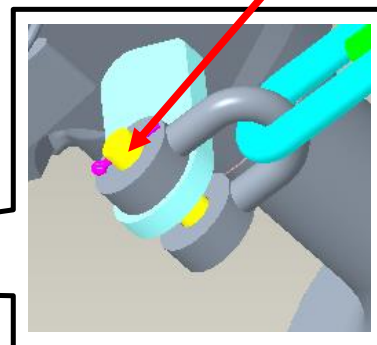
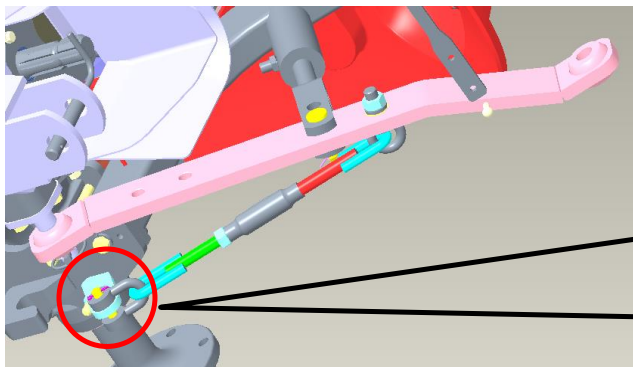


Assembly instructions

R&D CETER

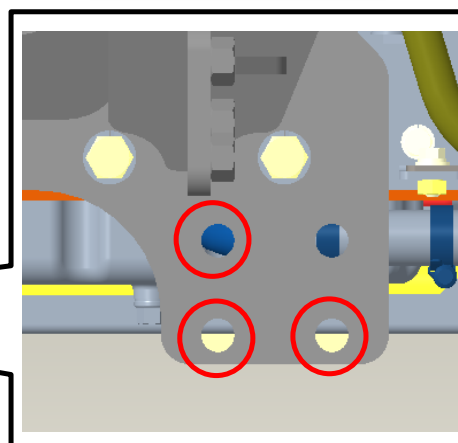
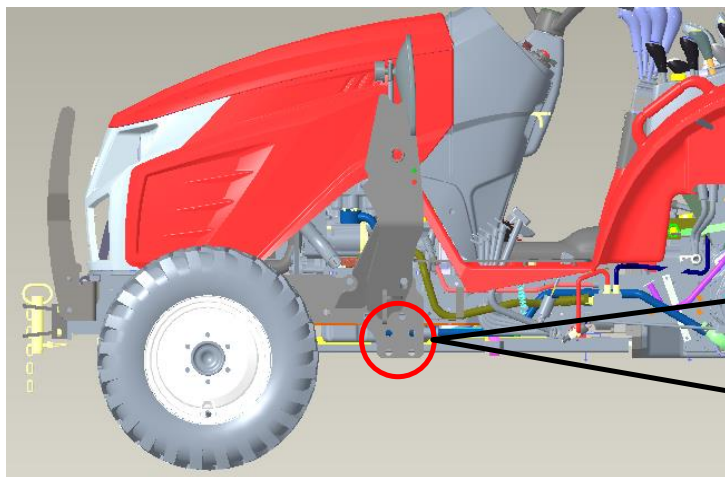
5. Disassemble the CHECK CHAIN PINS assembled on both sides

CHECK CHAIN PIN

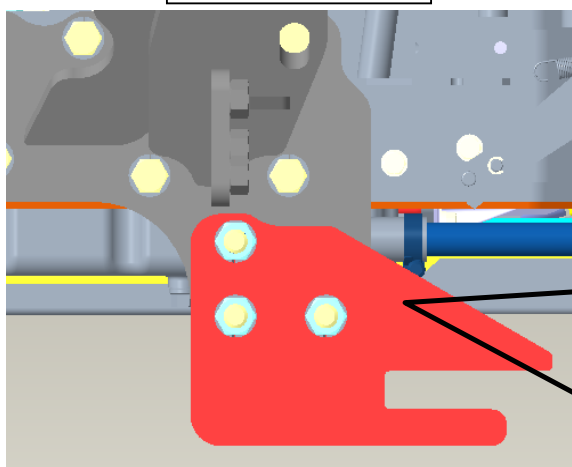


6. Assemble on both sides using BRACKET , HANGER (9020-400-200-1)

Assembly location

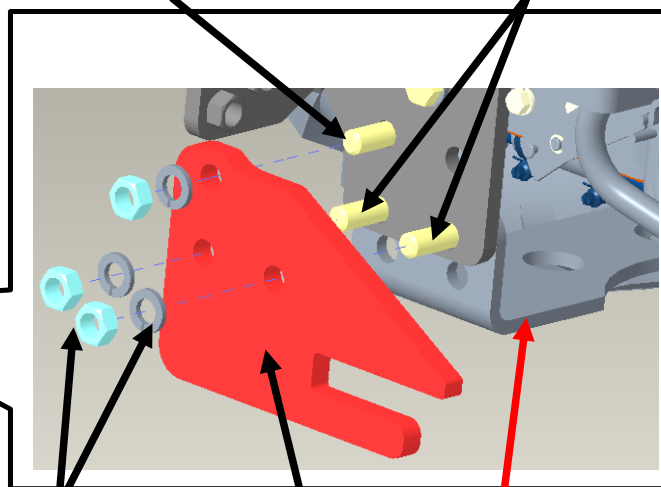


Assembly photo



BOLT M16 X 45 2EA

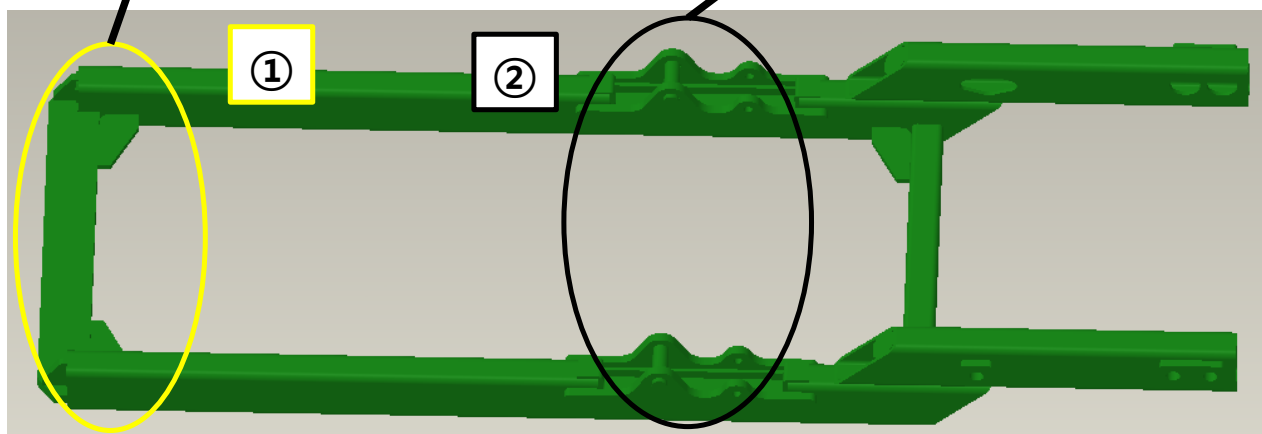
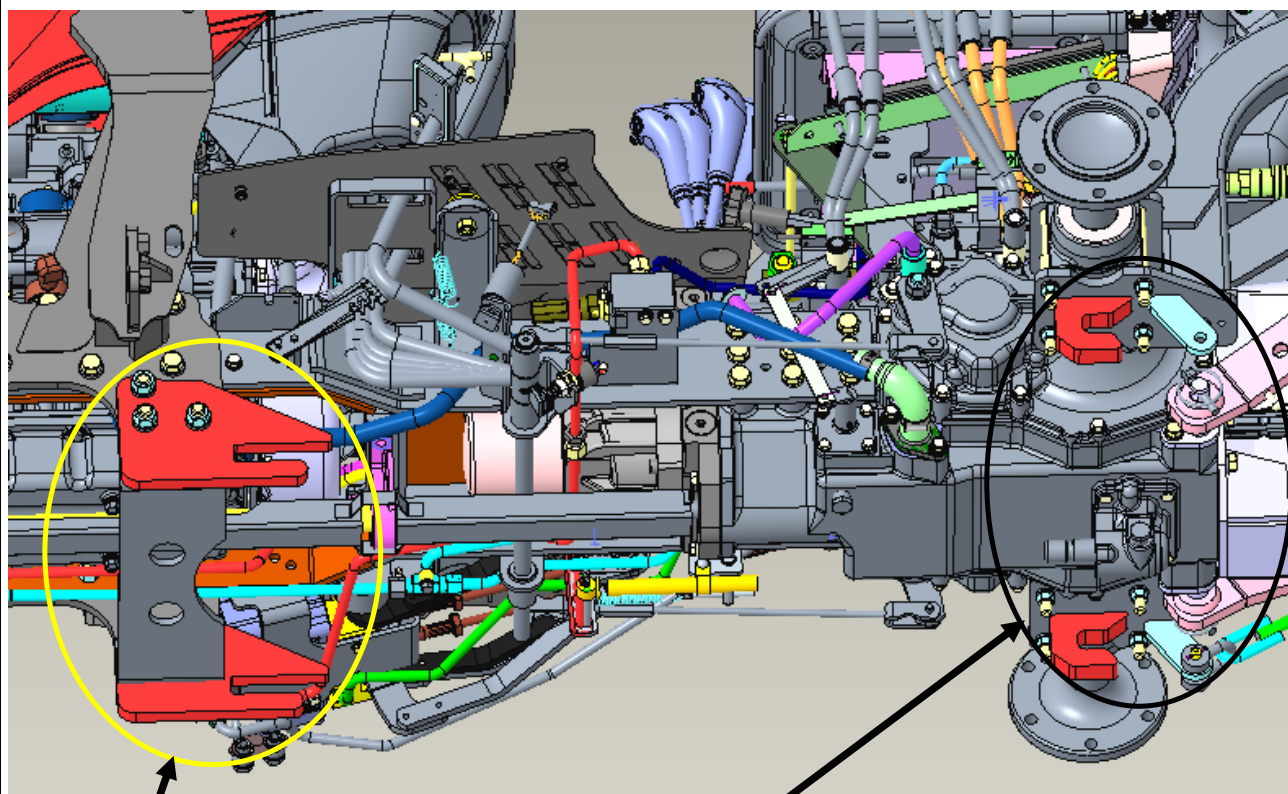
BOLT M16 X 60 4EA

WASHER , SPRING M16 6EA
NUT M16 6EA

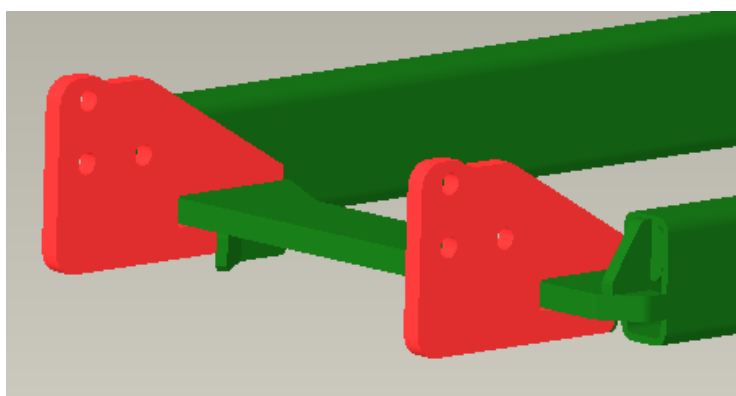
LOADER related parts

BRACKET , HANGER

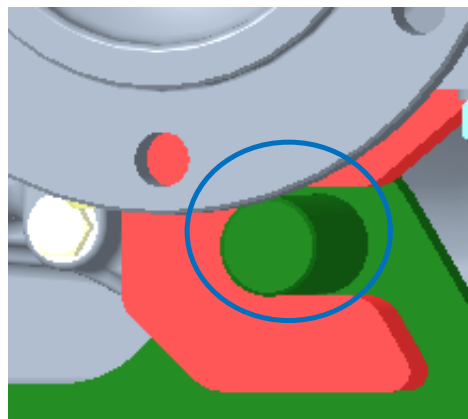
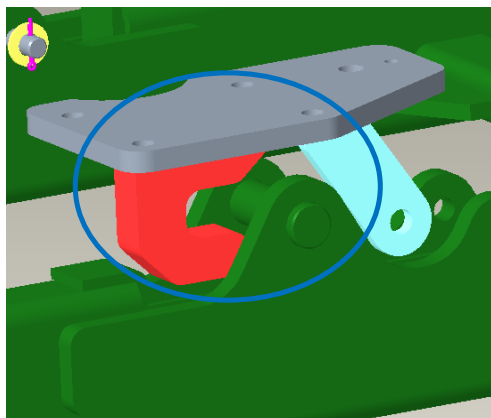
7. Assemble the RAIL FRAME COMP in order as shown below



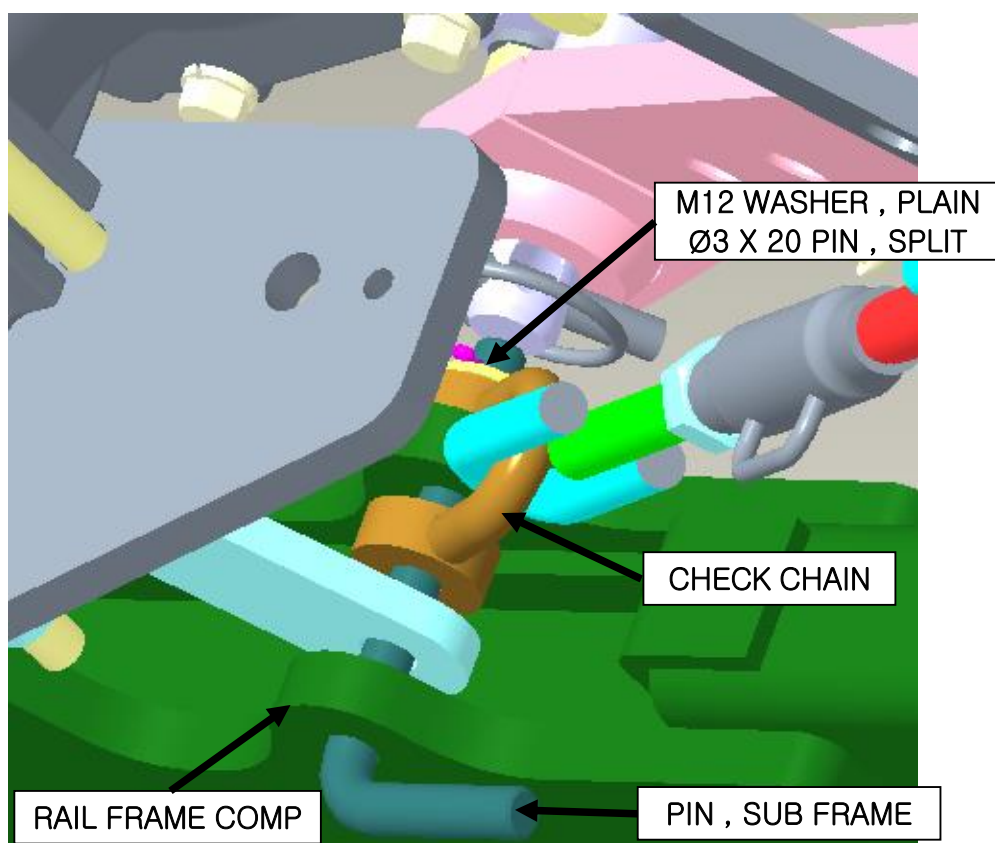
1) Insert the RAIL FRAME COMP into the HANGER as shown below



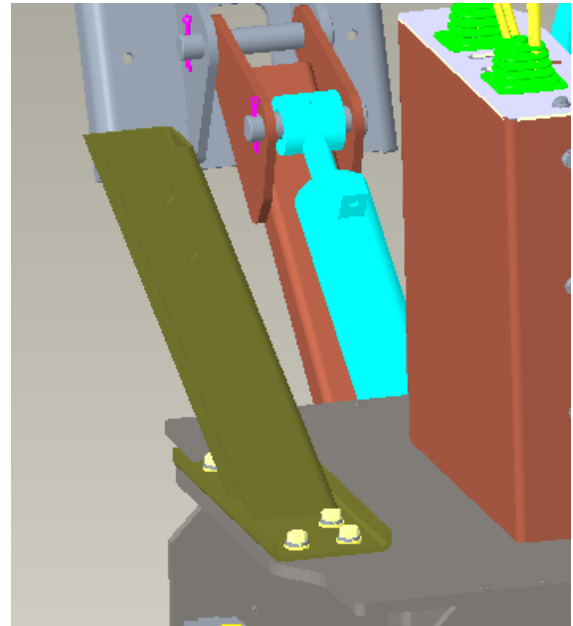
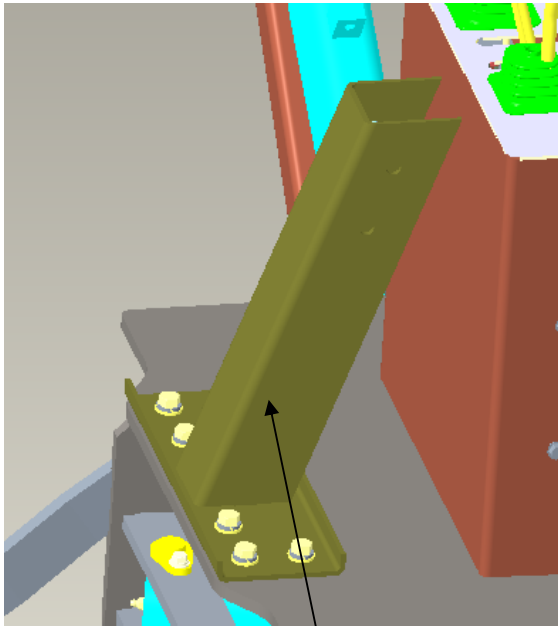
2) Hang the RAIL FRAME COMP on the HOOK like the picture below



8. Assemble CHECK CHAIN using PIN , SUB FRAME (9020-400-210-0)

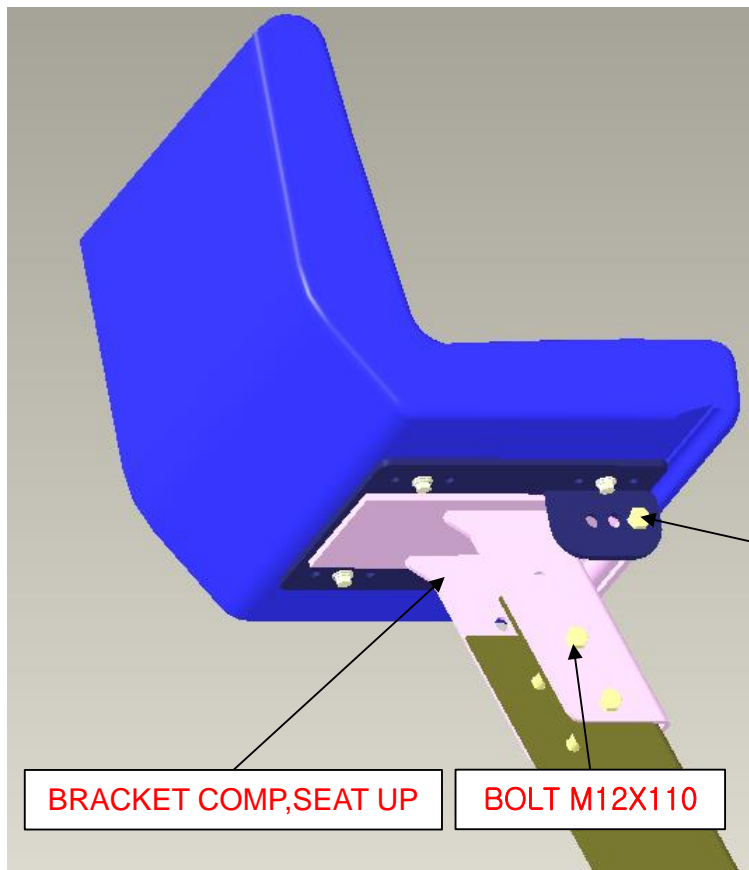


10. Assemble BRACKET COMP, SEAT BASE as shown below



BRACKET COMP, SEAT BASE

11. Assemble the SEAT as shown below



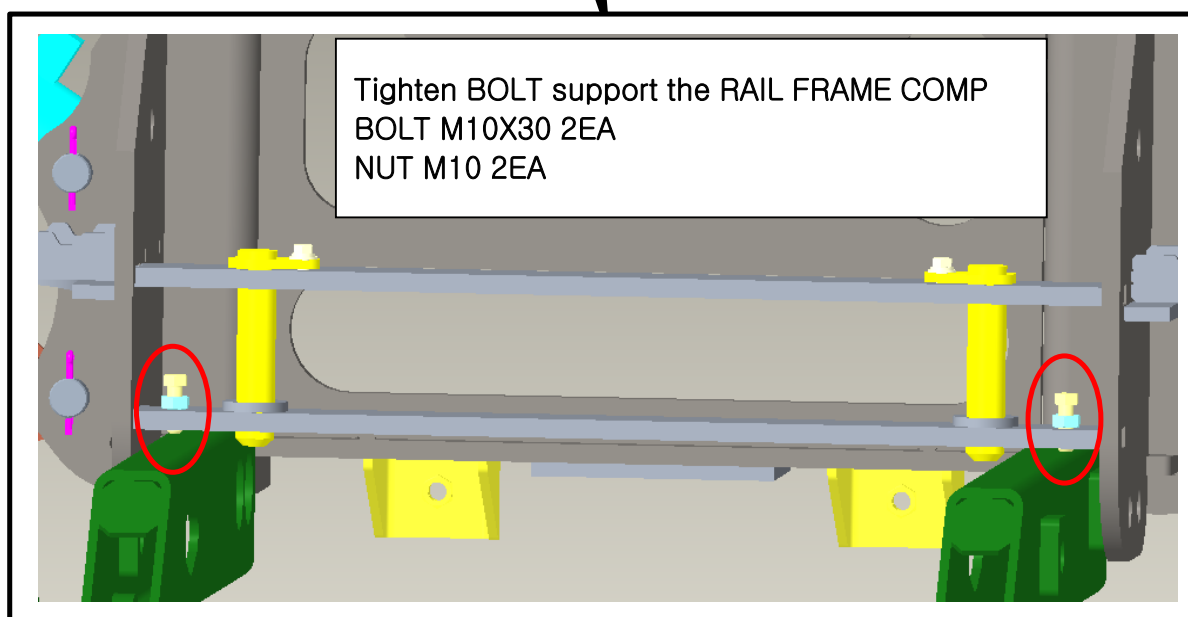
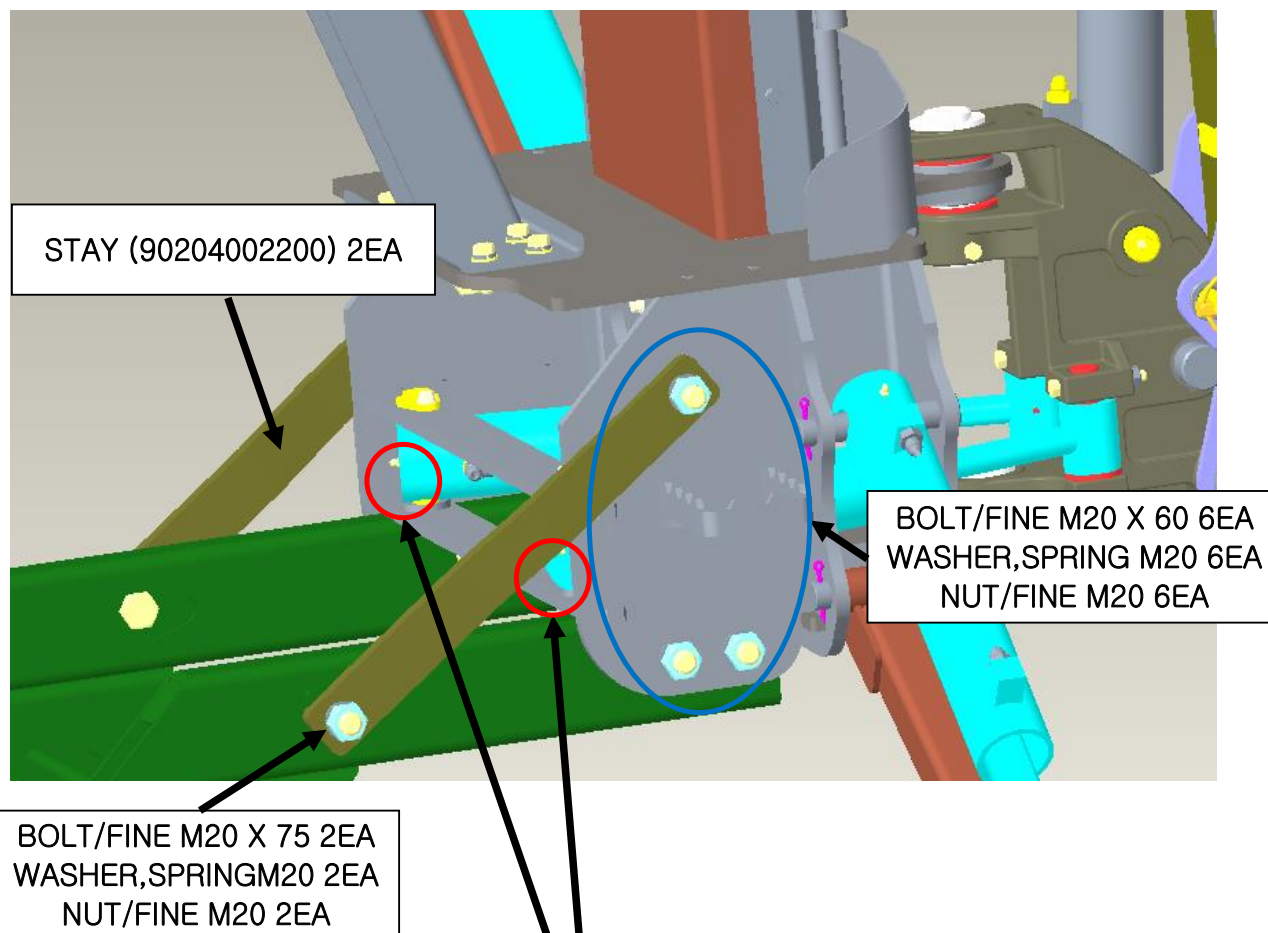
BOLT M12X160
NUT/NYLON M12

BRACKET COMP, SEAT UP

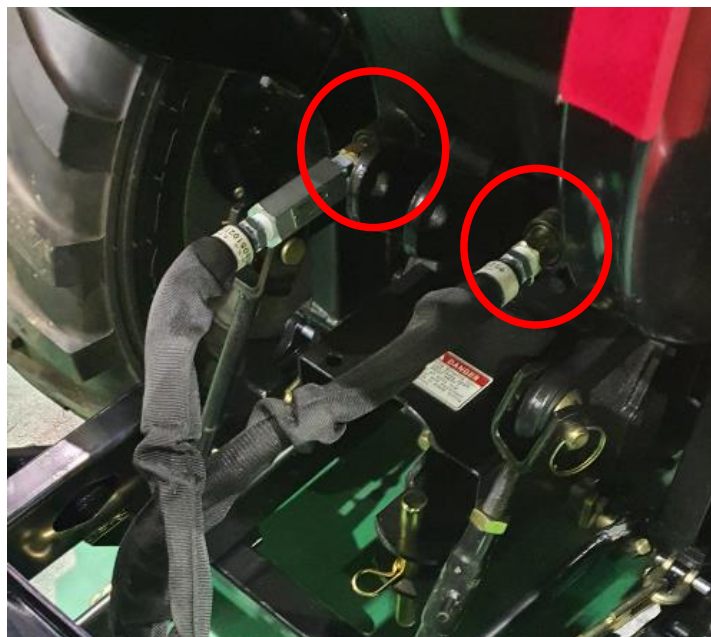
BOLT M12X110

12. Assemble the MAIN FRAME COMP to the RAIL FRAME COMP as shown below

※ Use BOLT/FINE and NUT/FINE



13. Connect hydraulic hose



14. Assemble the SMV BRACKET

