

## GENERAL TIPS

- For logs up to sixteen inches in diameter, the log should be centered with the wedge and the plunger.
- For logs larger than sixteen inches in diameter, split approximately one third of the cross section at a time.
- If a log should become stuck on the wedge and the cylinder will not push it through, retract the cylinder rod and plunger. Force a wooden wedge under the back end of the log raising it up. Continue doing this using larger size pieces of wood until the plunger will slide under the log. Extend the cylinder rod completely. This will force the plunger under the log rolling it up off the wedge. Rotate the log and split it in a different area splitting only one third of the cross section. (Figures 13 & 14)

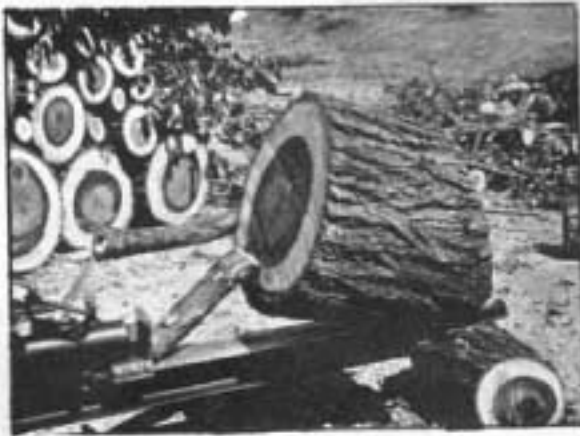


Figure 13



Figure 14

- If the cylinder rod is at the end of its travel and the log has not completely split, simply retract the cylinder rod and place a block of wood behind the first log. Repeat the forward stroke.

### ● ACV Valve Equipped Models:

The ACV Valve (auto control valve) adjustment screw (item 19, page 13) can be tightened to prevent the ACV from shifting into neutral too early. Remove the acorn nut (item 21, page 13), loosen locking nut (item 20, page 13) and make desired screw adjustment. Replace nuts.

- If controls become erratic, remove control end cap (item 11, page 13) and tighten the spring centering screw (item 16, page 13) completely. This screw should always be tight.
- Oil may occasionally foam out over the filler cap. This occurs when the oil level is high and the unit is not sitting level. The oil will eventually find its own level. Draining some oil will help.