

Illustration 3

g00737617

- (1) Sideshift cylinder
- (2) Tilt cylinder
- (3) Depth cylinders
- (4) Control valve
- (5) Check valve
- (6) Sideshift solenoid valve
- (7) Tilt solenoid valve
- (8) Depth solenoid valve
- (9) Lower auxiliary hydraulic hose
- (10) Upper auxiliary hydraulic hose
- (11) Orifice
- (C1A) Port to the rod end of the sideshift cylinder
- (C1B) Port to the head end of the sideshift cylinder

(C2A) Port to the rod end of the tilt cylinder

(C2B) Port to the head end of the tilt cylinder

(C3A) Port to the rod end of the depth cylinders

(C3B) Port to the head end of the depth cylinders

(P1) Inlet port for normal flow

(P2) Inlet port for reverse flow

When the host machine supplies hydraulic oil through lower auxiliary hydraulic hose (9), oil flows into port "P1" of control valve (4) and the oil flows through orifice (11). The reduced oil flow is blocked by tilt solenoid valve (7) and by depth solenoid valve (8). The oil flows through sideshift solenoid valve (6) to port "C1A" of the control valve. The oil flows from port "C1A" into the rod end of sideshift cylinder (1) and the oil flow causes the cylinder to retract. As the cylinder retracts, oil flows from the head end of the cylinder to port "C1B" of the control valve. The oil flows from the port through the sideshift solenoid valve to port "P2". Then, the oil flows from port "P2" back to the host machine through upper auxiliary hydraulic hose (10).

When the host machine supplies hydraulic oil through upper auxiliary hydraulic hose (10), oil flows into port "P2" of control valve (4). The oil flow is blocked by tilt solenoid valve (7) and by depth solenoid valve (8). The oil flows from port "P2" through sideshift solenoid valve (6) to port "C1B" of the control valve. The oil flows from port "C1B" into the head end of sideshift cylinder (1) and the oil flow causes the cylinder to extend. As the cylinder extends, oil flows from the rod end of the cylinder to port "C1A" of the control valve. The oil flows from the port through the sideshift solenoid valve. The oil flows from the solenoid valve through orifice (11) to port "P1". Then, the oil flows from port "P1" back to the host machine through lower auxiliary hydraulic hose (9).

Tilt System

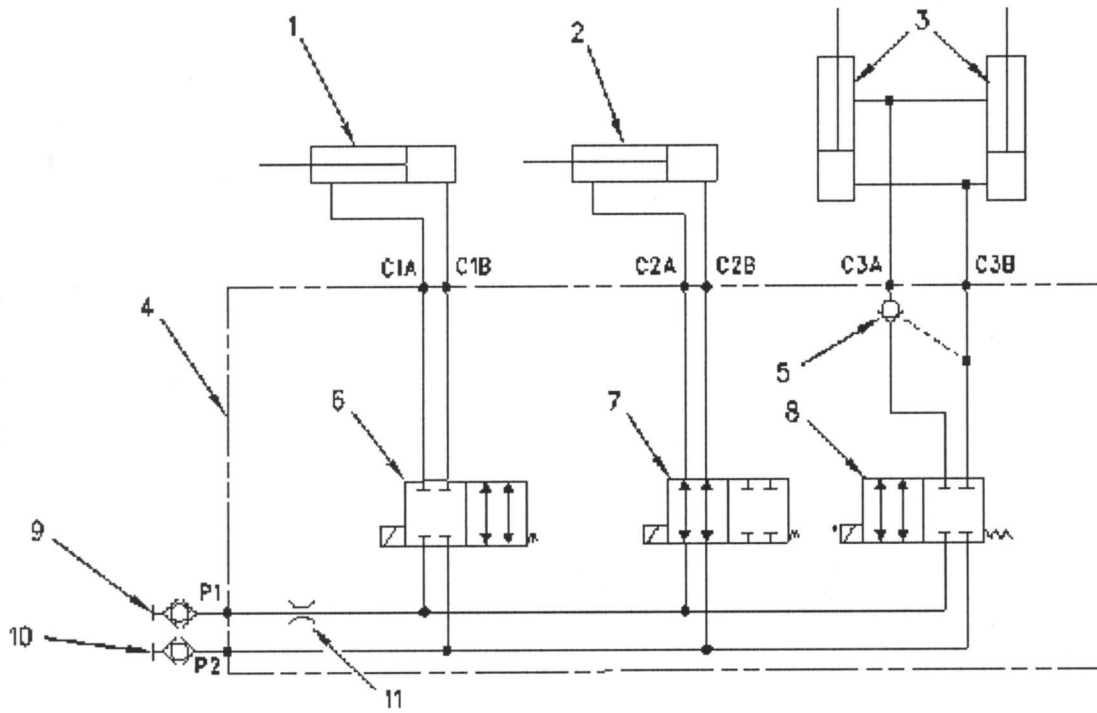


Illustration 4

g00737619

- (1) Sideshift cylinder
- (2) Tilt cylinder
- (3) Depth cylinders
- (4) Control valve
- (5) Check valve
- (6) Sideshift solenoid valve in the shifted position
- (7) Tilt solenoid valve in the shifted position
- (8) Depth solenoid valve
- (9) Lower auxiliary hydraulic hose
- (10) Upper auxiliary hydraulic hose
- (11) Orifice
- (C1A) Port to the rod end of the sideshift cylinder
- (C1B) Port to the head end of the sideshift cylinder