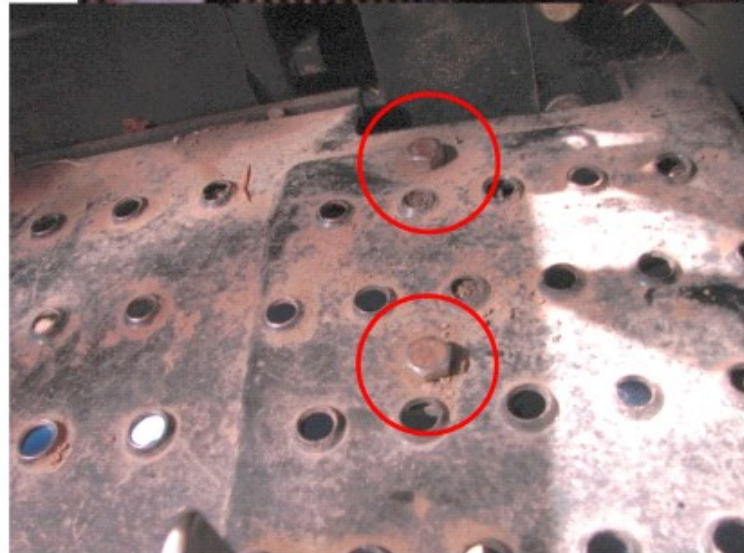


Jinma 284 Brake Disassembly

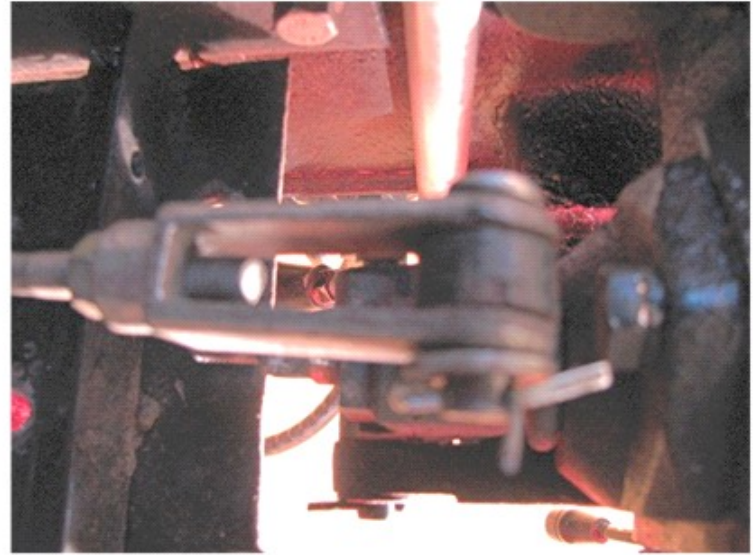


Accelerator Connections





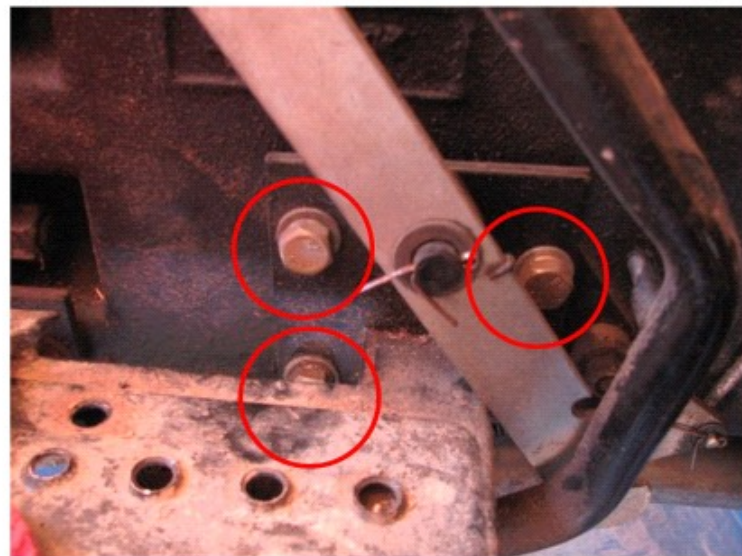
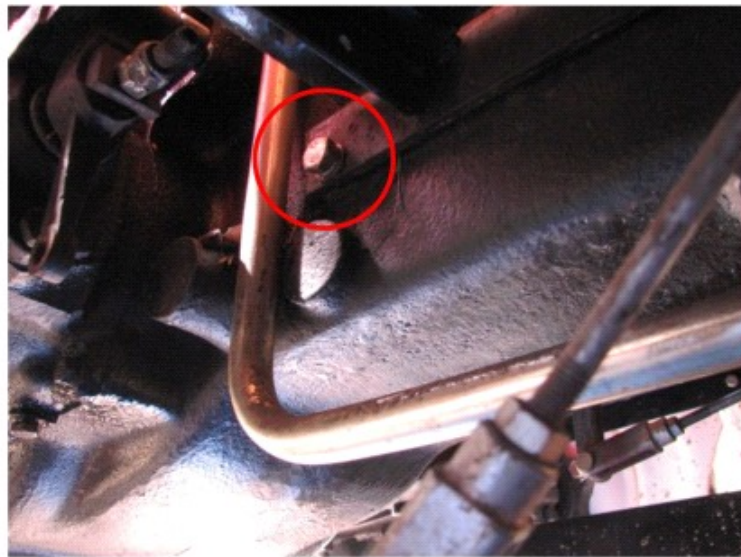
Brake Spring



Brake Adjusting Linkage

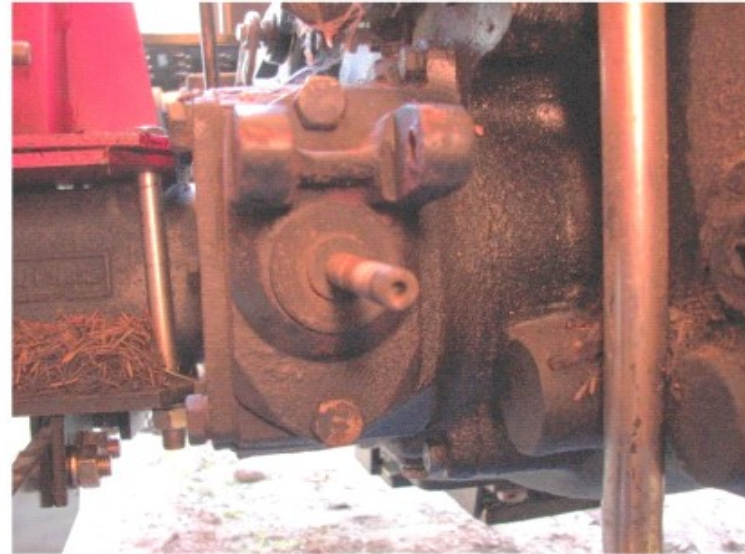


Deck Removal

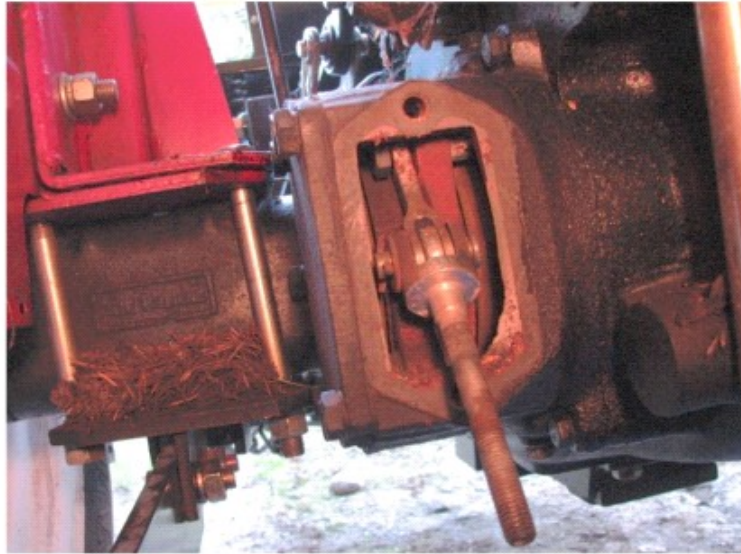




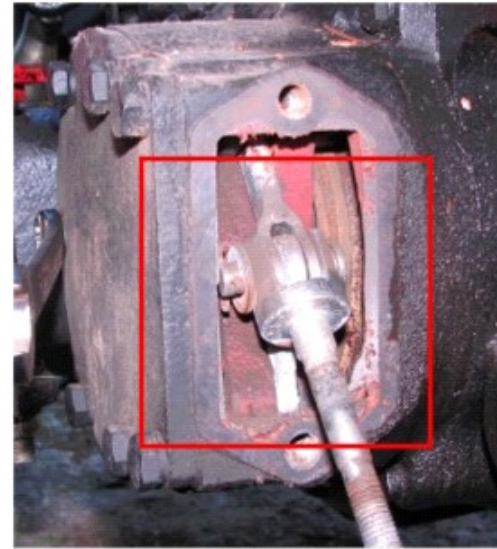
Brake Leverage Mechanism



Shaft to Brake Internals



I reversed the direction of that clevis pin when I reassembled cause I couldn't figure out how to get it in from the direction as assembled.



Pay attention to these linkages to get them back in same position.



Pressure Plate Assembly



Note the heavy springs holding the plates together.



If you are going to disassemble, be sure that you have tools for those springs. I used these tools. The brake tool with the hooked tip allowed me to hook onto the springs to 'roll' them out and back in.



These half-sphere holes all had grease in when I disassembled. Having no instructions/instructor, I decided to put grease there when reassembling. I also put a thin layer of grease on the entire sphere-area where the balls ride. The pressure plate assembly does not rotate so grease won't be thrown around and thought that it would help movement of the balls. Time will tell if this was a mistake.