

Mounting Instructions
With Parts Listing and Drawings
For

FREDRICKS FAMILY 7

2-POST FOLDING ROLLBAR

Part No.
A-11339

Manufactured by:



BOX 718 • LITCHFIELD, MINNESOTA 55355

Ph: (320) 693-3221 Fax: (320) 693-7252

1-800-222-5463

www.800cabline.com

INSTALLATION INSTRUCTIONS FOR ROLLOVER PROTECTION SYSTEM (ROPS)

This manual contains assembly, operating, maintenance and safety instructions for your ROPS. Before Installing the ROPS or operating a machine equipped with a ROPS, carefully read these instructions completely. The ROPS will reduce the risk of serious or fatal injury in the unlikely event of a tip over although the system cannot protect the operator from all possible injuries. By following the operating, maintenance, and safety instructions, you will prolong the life of the machine and the ROPS, maintain its maximum efficiency and promote safe operation.

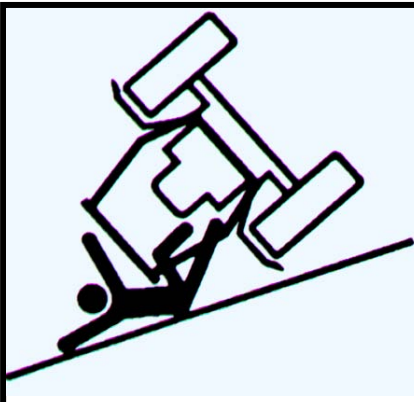
If additional information is needed, contact your authorized equipment dealer or distributor. **Keep this manual with the operator's manual for the machine for future reference.**

IMPORTANT:

1. Do not cut, drill, modify or repair ROPS in any manner.
2. Always replace a damaged ROPS.
3. Always use the seatbelt and ROPS together.
4. Frequently inspect rollbar and seat belts for damage or loose hardware.
5. Use extreme care when working close to fences, ditches, trees and on hills.
6. Check overhead clearances carefully before driving under any objects.
7. Do not leave operator's position while unit is running.
8. Do not carry riders.

WARNING!

This ROPS is certified for use on machines with a maximum gross vehicle weight (GVW) of 6,000 LB. The GVW INCLUDES the weight of the base machine, operator, fuel, ROPS, and other attachments and payloads. When attachments are added, causing the GVW of the machine to be more than 6,000 LB., the ROPS may not provide adequate protection resulting in serious injury or death. Use caution when installing attachments and **DO NOT EXCEED** the GVW rating of the ROPS.



WARNING!

SERIOUS INJURY OR DEATH MAY RESULT FROM MACHINE ROLLOVER

- DO NOT OPERATE MACHINE ON STEEP SLOPES OR NEAR DROP OFFS
- ALWAYS USE SEAT BELTS
- AVOID SHARP AND/OR QUICK TURNS
- DO NOT EXCEED THE MACHINE WEIGHT RATING OF THE ROPS

WARNING

ROLLOVER MAY CAUSE PERMANENT INJURY OR DEATH.

- ROPS RAISES THE CENTER OF GRAVITY AND REDUCES STABILITY ON SLOPES.
- SUDDEN STARTS OR TURNS ON RAMPS OR SLOPES CAN CAUSE OVERTURN.
- USE GREATER CARE ON RAMPS AND AS THE SLOPE INCREASES.

Fredricks Family 7

Preparation of Machine

1. Park machine and set brake.
2. Remove rear fenders from tractor.
3. Place each rollbar leg (2-15960 right and 2-15996 left) over each side of rear axle housing.(refer to drawing a-11339 and 4-14862 in back of instructions for part references)
4. Install (4) hex head bolts M12 x 30mm long, (4) ½" lock washers and (4) ½" flat washers from top of each leg plate into tapped holes located on top of each side of the tractor axle housing. Leave all hardware loose until noted later in instructions. See Figure 1.
5. Install (1) ½-13unc x 6.50" long bolt, (2) ½" flat washers and (1) ½-13unc nylock nut, into the lower location of each leg. See Figure 1.

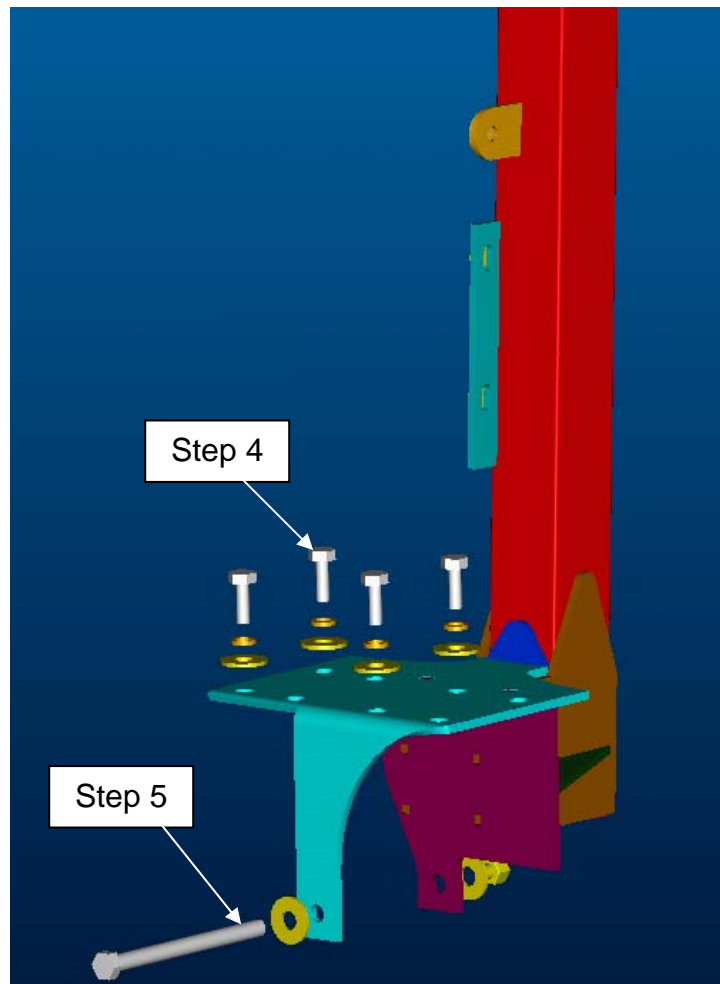


FIGURE 1
(Front side view of left leg shown)

Fredricks Family 7

- Place (4) 9/16 x 2" bushings (supplied by Fredricks equipment part # FB-100) on top of rollbar mounting plate over non-used holes then place fender on bushings (do not use rubber bushings). Insert (2) outside M12 x 95mm long, (2) 1/2" lock washer, and (2) 1/2" flat washer on each leg. See Figure 2.

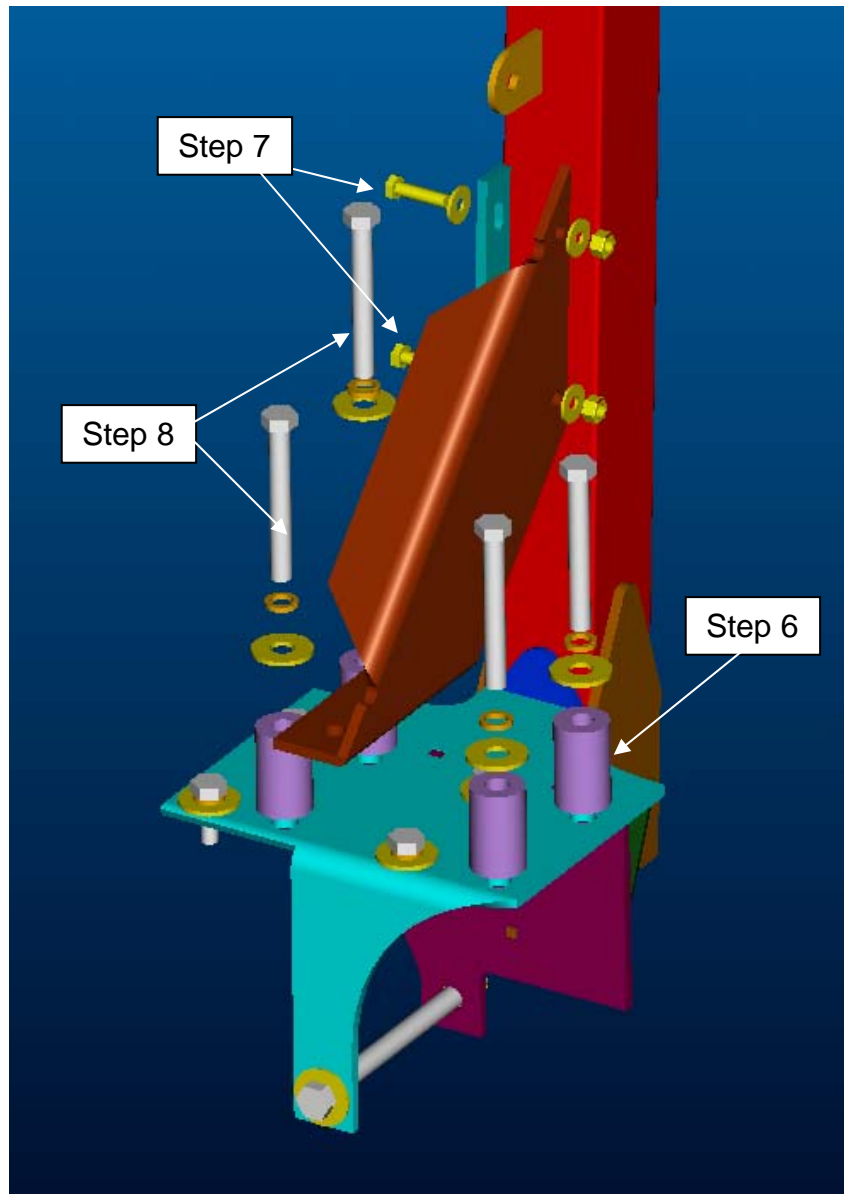


Figure 2
(Front side view of left leg)

- Install items 1-44226 (left) and 1-44227 (right) using (2) 5/16"- 13unc X 1.25" long, (4) 5/16" flat washers, and (2) 5/16" nylock nuts on top holes of gusset.

Fredricks Family 7

8. Install (2) remaining M12 X 95mm long, (2) ½" lock washers, (2) ½" flat washers through gusset, fender, bushing, mounting plate, and into axle housing on each legs. See Figure 2.
9. Install (1) rubber bumpers into the inside of each bracket leg. See Figure 3.
10. Slide top hoop (1-43883) in between plates on each leg, attach using (2) ½" – 13unc X 4" long and (2) ½" – 13unc center lock nut, in bottom pivot hole. See Figure 3.
11. Install hitch pin with EPDM washer, into upper hole of pivoting plate. See figure 3.

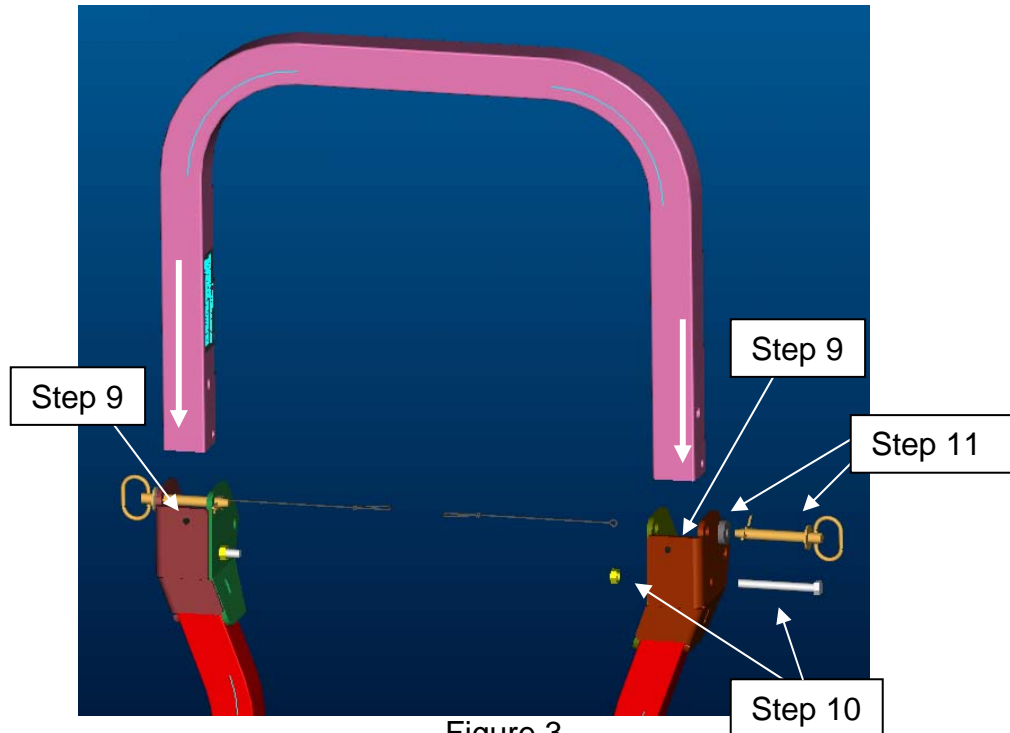


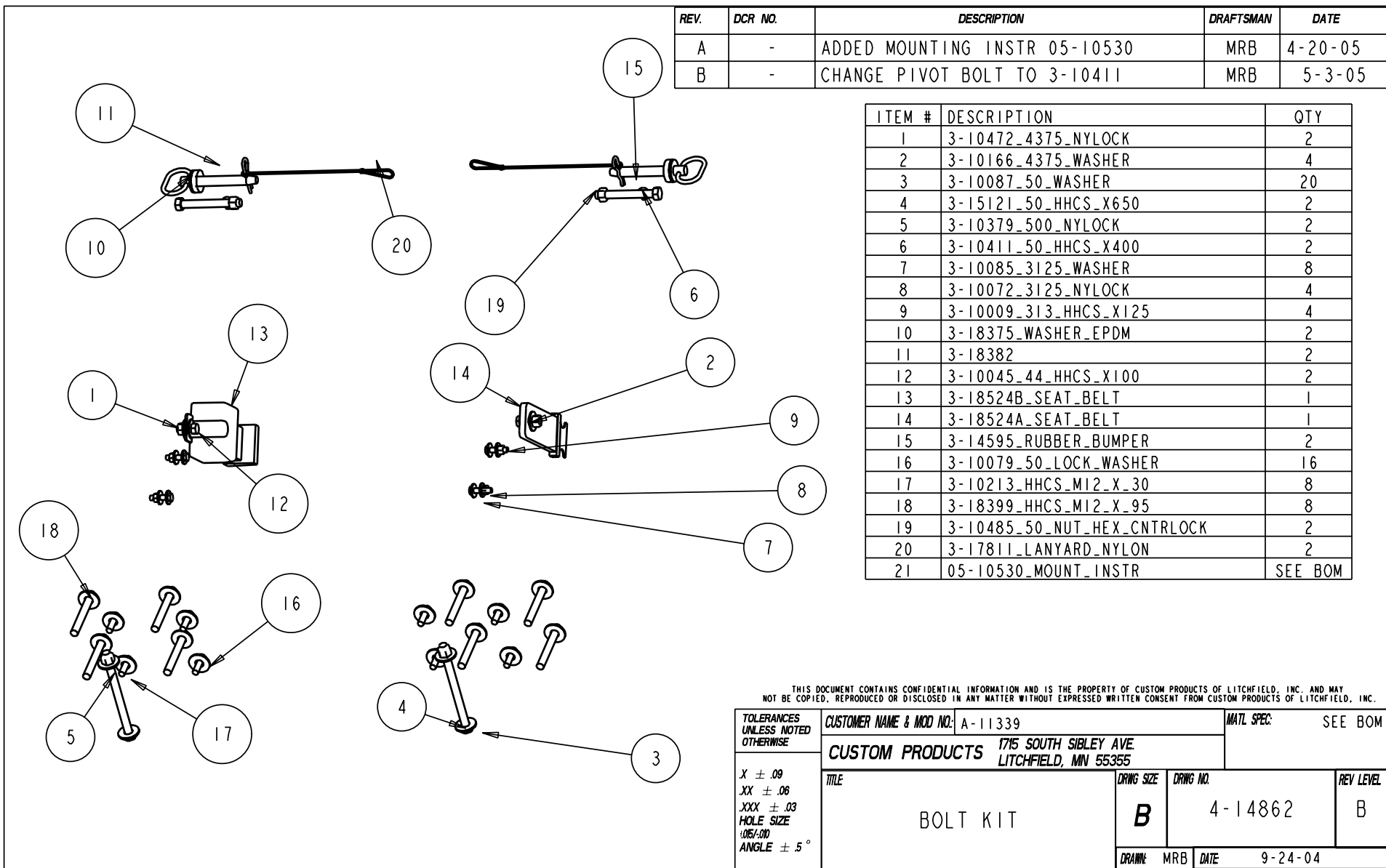
Figure 3

12. Attach seatbelt to seat belt mounts using (2) 7/16" – 13unc X 1" long, (4) 7/16" flat washers and (2) 7/16" – 13unc nylock nut. See Figure 4.

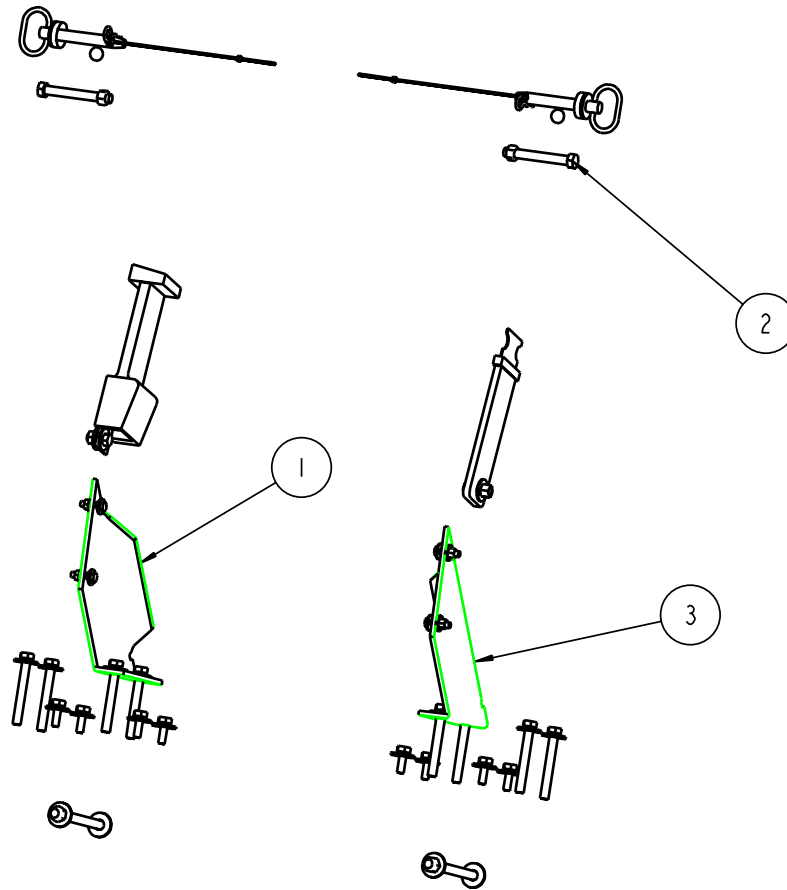


Figure 4

13. Tighten all hardware.



REV.	DCR NO.	DESCRIPTION	DRAFTSMAN	DATE
------	---------	-------------	-----------	------

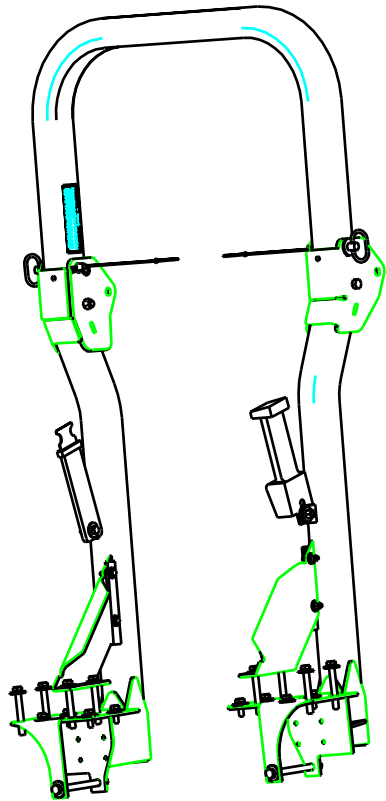


ITEM #	DESCRIPTION	QTY
1	1-44226_LEFT_GUSSET	1
2	4-14862_BOLT_KIT	1
3	1-44227_RIGHT_GUSSET	1

THIS DOCUMENT CONTAINS CONFIDENTIAL INFORMATION AND IS THE PROPERTY OF CUSTOM PRODUCTS OF LITCHFIELD, INC. AND MAY NOT BE COPIED, REPRODUCED OR DISCLOSED IN ANY MANNER WITHOUT EXPRESSED WRITTEN CONSENT FROM CUSTOM PRODUCTS OF LITCHFIELD, INC.

TOLERANCES UNLESS NOTED OTHERWISE	CUSTOMER NAME & MOD NO.: FREDRICKS		MATL. SPEC:	
	CUSTOM PRODUCTS 1715 SOUTH SIBLEY AVE. LITCHFIELD, MN 55355			
X ± .09 .XX ± .06 .XXX ± .03 HOLE SIZE .015/-0.00 ANGLE ± .5 °	TITLE MOUNT KIT	DRAWING SIZE	DRAWING NO.	REV LEVEL
		B	4-14960	
		DRAWN: MRB	DATE	5-18-05

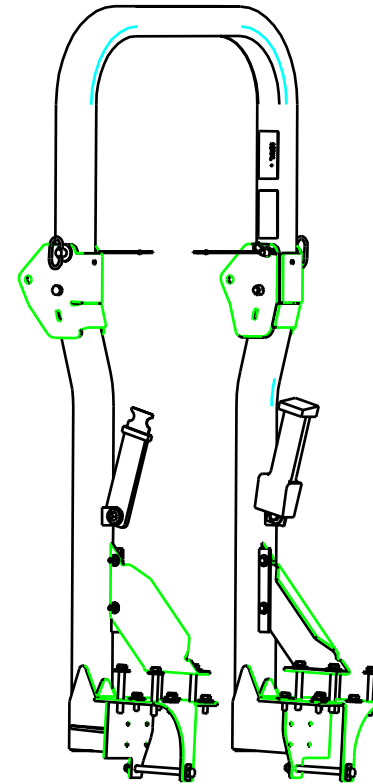
REV.	DCR NO.	DESCRIPTION	DRAFTSMAN	DATE
A	-	CHANGED BOX ADDED 3-17792	MRB	4-21-05



FRONT LEFT SIDE VIEW

SCALE 0.100

SHOWN ASSEMBLED FOR REFERENCE ONLY



FRONT RIGHT SIDE VIEW

THIS DOCUMENT CONTAINS CONFIDENTIAL INFORMATION AND IS THE PROPERTY OF CUSTOM PRODUCTS OF LITCHFIELD, INC. AND MAY NOT BE COPIED, REPRODUCED OR DISCLOSED IN ANY MANNER WITHOUT EXPRESSED WRITTEN CONSENT FROM CUSTOM PRODUCTS OF LITCHFIELD, INC.

TOLERANCES UNLESS NOTED OTHERWISE	CUSTOMER NAME & MOD NO: FAMILY 7		MTRL SPEC:		
	CUSTOM PRODUCTS 1715 SOUTH SIBLEY AVE LITCHFIELD, MN 55355				
X ± .09 .XX ± .06 .XXX ± .03 HOLE SIZE .065/.010 ANGLE ± .5 °	TITLE 2-POST ROLL BAR		DRAWING SIZE	DRAWING NO.	REV LEVEL
			B	A-11339	A
			DRAWN: MRB	DATE: 9-17-04	