

FREDRICKS FAMILY 5

**Mounting Instructions
With Parts Listing and Drawing For**

2-POST FOLDING ROLLBAR

**Part No.
A-11370**

Manufactured by:



BOX 718 • LITCHFIELD, MINNESOTA 55355
Ph: (320) 693-3221 Fax: (320) 693-7252
1-800-222-5463

www.800cabline.com

INSTALLATION INSTRUCTIONS FOR ROLLOVER PROTECTION SYSTEM (ROPS)

This manual contains assembly, operating, maintenance and safety instructions for your ROPS. Before installing the ROPS or operating a machine equipped with a ROPS, carefully read these instructions completely. The ROPS will reduce the risk of serious or fatal injury in the unlikely event of a tip over although the system cannot protect the operator from all possible injuries. By following the operating, maintenance, and safety instructions, you will prolong the life of the machine and the ROPS, maintain its maximum efficiency and promote safe operation.

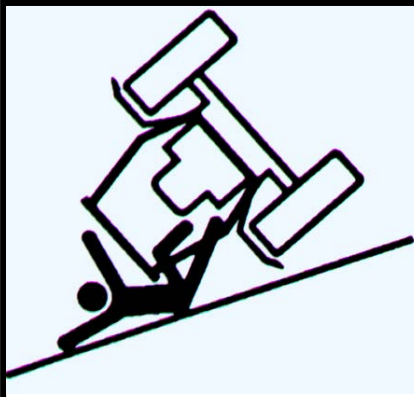
If additional information is needed, contact your authorized equipment dealer or distributor. **Keep this manual with the operator's manual for the machine for future reference.**

IMPORTANT:

1. Do not cut, drill, modify or repair ROPS in any manner.
2. Always replace a damaged ROPS.
3. Always use the seatbelt and ROPS together.
4. Frequently inspect rollbar and seat belts for damage or loose hardware.
5. Use extreme care when working close to fences, ditches, trees and on hills.
6. Check overhead clearances carefully before driving under any objects.
7. Do not leave operator's position while unit is running.
8. Do not carry riders.

WARNING!

This ROPS is certified for use on machines with a maximum gross vehicle weight (GVW) of 4000 LB. The GVW INCLUDES the weight of the base machine, operator, fuel, ROPS, and other attachments and payloads. When attachments are added, causing the GVW of the machine to be more than 4000 LB., the ROPS may not provide adequate protection resulting in serious injury or death. Use caution when installing attachments and **DO NOT EXCEED** the GVW rating of the ROPS.



WARNING!

SERIOUS INJURY OR DEATH MAY RESULT FROM MACHINE ROLLOVER

- DO NOT OPERATE MACHINE ON STEEP SLOPES OR NEAR DROP OFFS
- ALWAYS USE SEAT BELTS
- AVOID SHARP AND/OR QUICK TURNS
- DO NOT EXCEED THE MACHINE WEIGHT RATING OF THE ROPS

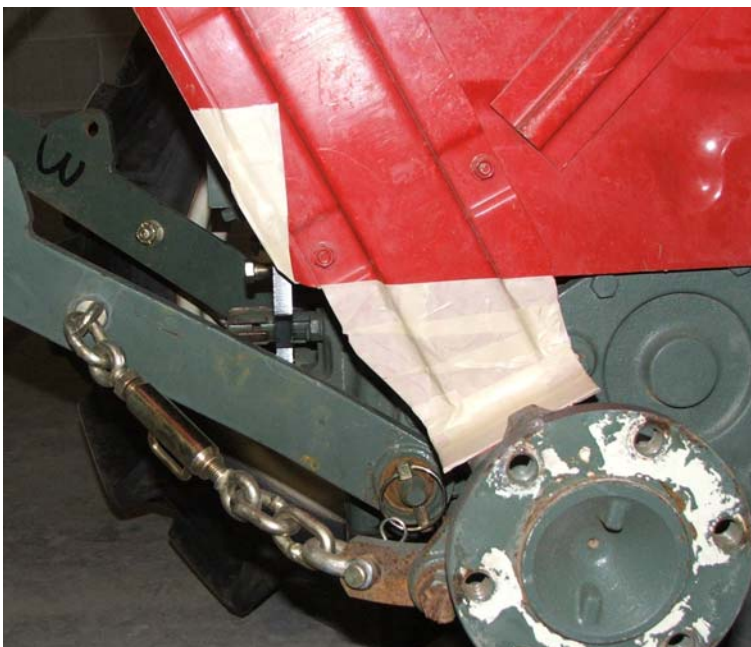
WARNING

ROLLOVER MAY CAUSE PERMANENT INJURY OR DEATH.

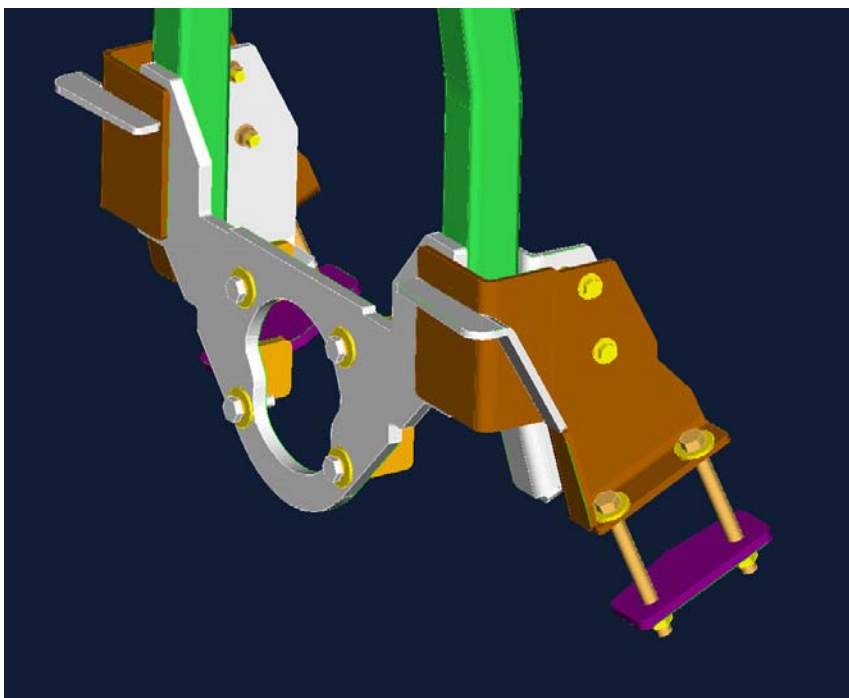
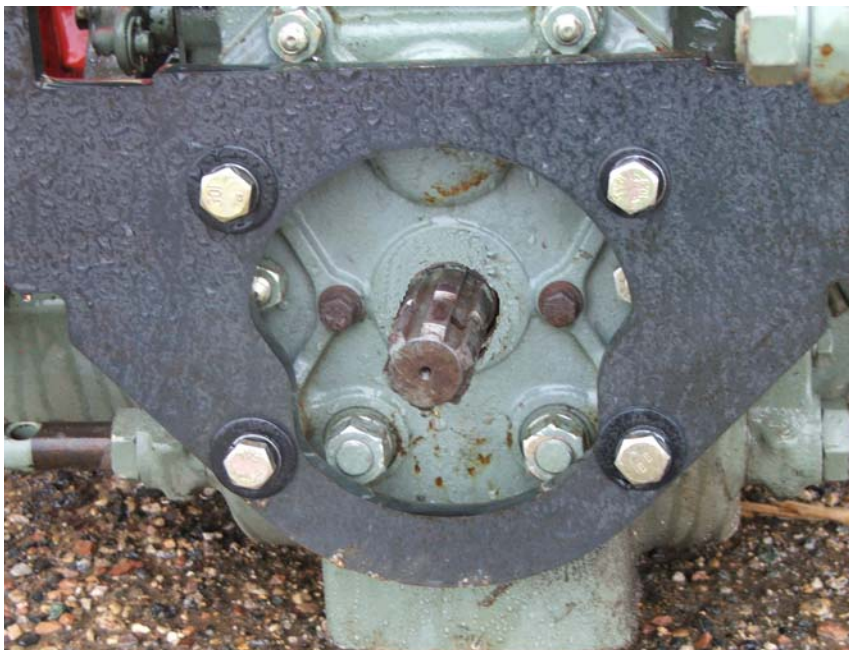
- ROPS RAISES THE CENTER OF GRAVITY AND REDUCES STABILITY ON SLOPES.
- SUDDEN STARTS OR TURNS ON RAMPS OR SLOPES CAN CAUSE OVERTURN.
- USE GREATER CARE ON RAMPS AND AS THE SLOPE INCREASES.

MOUNTING INSTRUCTIONS 2-POST FOLDING ROLLBAR

- 1) Park the tractor on a level surface and set the brakes.
- 2) Remove rear tires and support rear axle on jack stands.
- 3) Remove the lift links from the 3 point lift arms.
- 4) Modify the fenders. There are (2) different fender configurations. If the fenders have bolt on mount brackets they need to be removed. If the fender mounts are part of the fender, the lower section needs to be cut off. On both styles of fenders there needs to be a 2.25" x 5.0" notch cut in the back lower edge of the fenders. Reference pictures for the (2) different style fenders. The marked area needs to be removed.



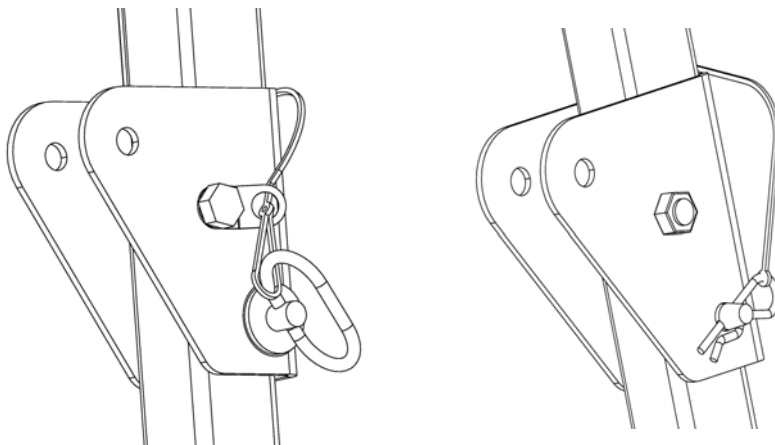
5) The lower rollbar mount can now be installed onto the tractor. Fasten to the PTO housing with (4) 12mm x 35 grd 10.9 bolts, (4) .50" flat washers and (4) .50" lock washers. Attach to the axle with (4) .50" x 5.50" grd 5 bolts, (8) .50" flat washers, (4) .50" nylock nuts and (2) under axle mount plates.



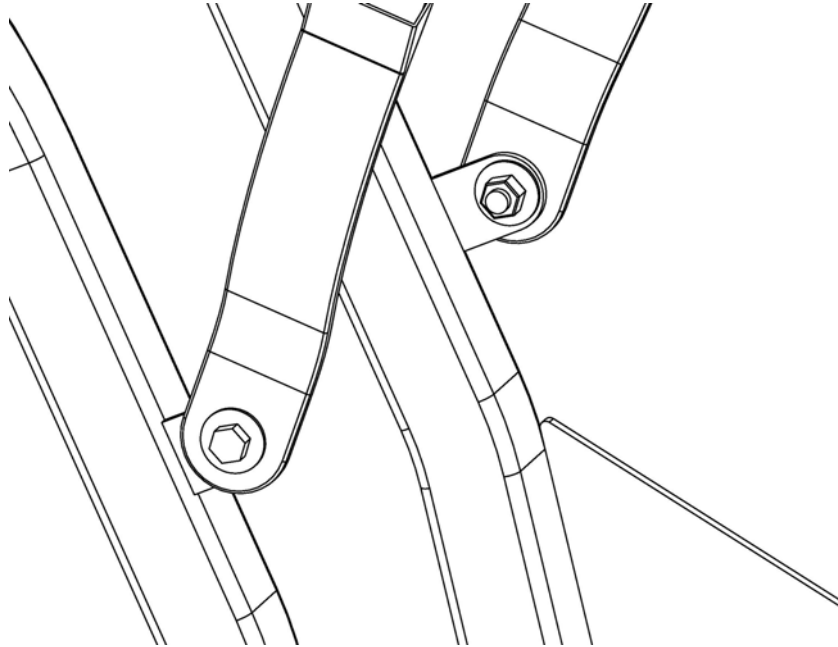
6) Match drill (2) .375" holes in each fender using the holes in the lower rollbar mount as a template. Fasten the fenders to the lower mounts with (4) .375" x 2.50" grd 5 bolts, (4) .31" flat washers and (4) .375" serrated flange nuts.



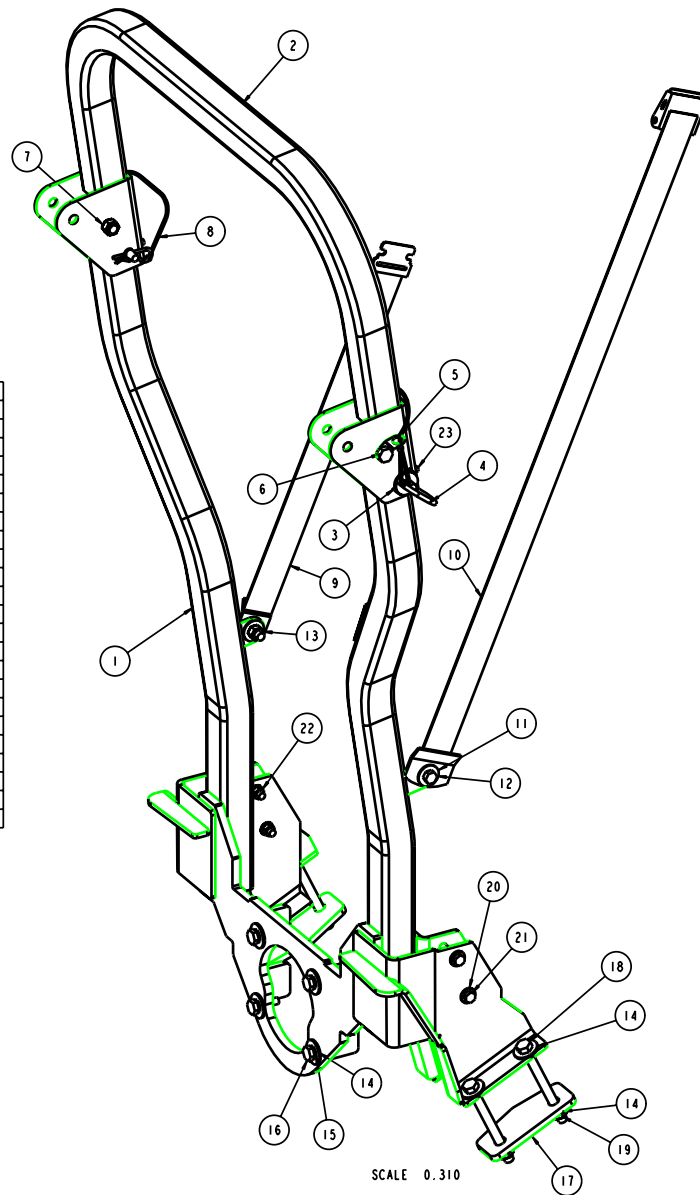
- 7) Reinstall the rear tires.
- 8) Install the upper rollbar hoop. Fasten each side with a .50 x 3.00 bolt, a pin retainer washer and a .50 centerlock nut into the upper mount hole. Tighten only until the nut contacts the bracket. Do not over tighten. Install a rubber bumper on the inside of each of the upper hoop mounts using the hole provided.
- 9) Install a epdm washer onto each of the hitch pins. Position the top hoop into the upright location and install the hitch pins.
- 10) Attach a lanyard to the handle of each hitch pin. Thread it through the retainer washer and attach the spring pin to the eye in the lanyard. Install the spring pins into the hitch pins.



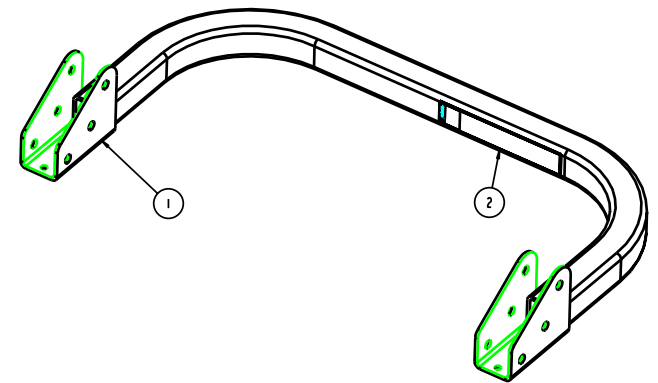
- 11) Install the seat belt to the rollbar with (2) .43 x 1.25 bolts, (4) .43 flat washers and (2) .43 nylock nuts.



Replacement Parts List
Refer to Drawing #A-11370



ITEM #	DESCRIPTION	QTY
1	4-15004 LOWER ROLLBAR ASSEMBLY	1
2	4-14999 UPPER-HOOP	1
3	3-18418 WASHER_EPDm_500	2
4	3-18417 HITCH_PIN_500	2
5	3-18413 WASHER_FORMED_RETAIN_50	2
6	3-10131_50_HHCS_X300	2
7	3-10485_50_NUT_HEX_CNTRLOCK	2
8	3-17811_LANYARD_NYLON_180_LOOP	2
9	3-10287_SEAT_BELT_1	1
10	3-10287_SEAT_BELT_2	1
11	3-10166_4375_WASHER	4
12	3-10026_44_HHCS_X125	2
13	3-10472_4375_NYLON	2
14	3-10087_50_WASHER	12
15	3-10079_50_LOCK_WASHER	4
16	3-15930_HHCS_M12_X_35	4
17	1-44489 AXLE PLATE	2
18	3-17935_50_HHCS_X550	4
19	3-10379_500_NYLON	4
20	3-10085_3125_WASHER	4
21	3-10176_375_HHCS_X250	4
22	3-17622_375_SERRATED_FLANGE_NUT	4
23	3-18480_RUB BUMPER_W_FLANGE	2



SCALE 0.310

4-14999

ITEM #	DESCRIPTION	QTY
1	2-16065	1
2	3-18401_FOLDING_ROPS_DECAL	1

THIS DRAWING CONTAINS CONFIDENTIAL INFORMATION AND IS THE PROPERTY OF CUSTOM PRODUCTS, INC. AND MAY BE A TRADE SECRET OR BE SUBJECT TO PATENT RIGHTS. PLEASE CONTACT THE SALES DEPARTMENT AT 1-800-451-4141.

<small>TOLERANCES UNLESS NOTED OTHERWISE:</small>	CUSTOMER NAME & ADDR. NO.: FREDRICKS FAMILY 5	DATE SPEC:
<small>F ± .00 D ± .00 XX ± .02 HOLE SIZE H9/H9 ANGLE ± .5°</small>	CUSTOM PRODUCTS 176 SOUTH SAILEY AVE LITCHFIELD, N.Y. 05353	
REV.	QTY REQ.	UNIT AMT.
ROLLBAR ASSEMBLY	D	A-11370
DATE: SRB	REV.:	11/15/05