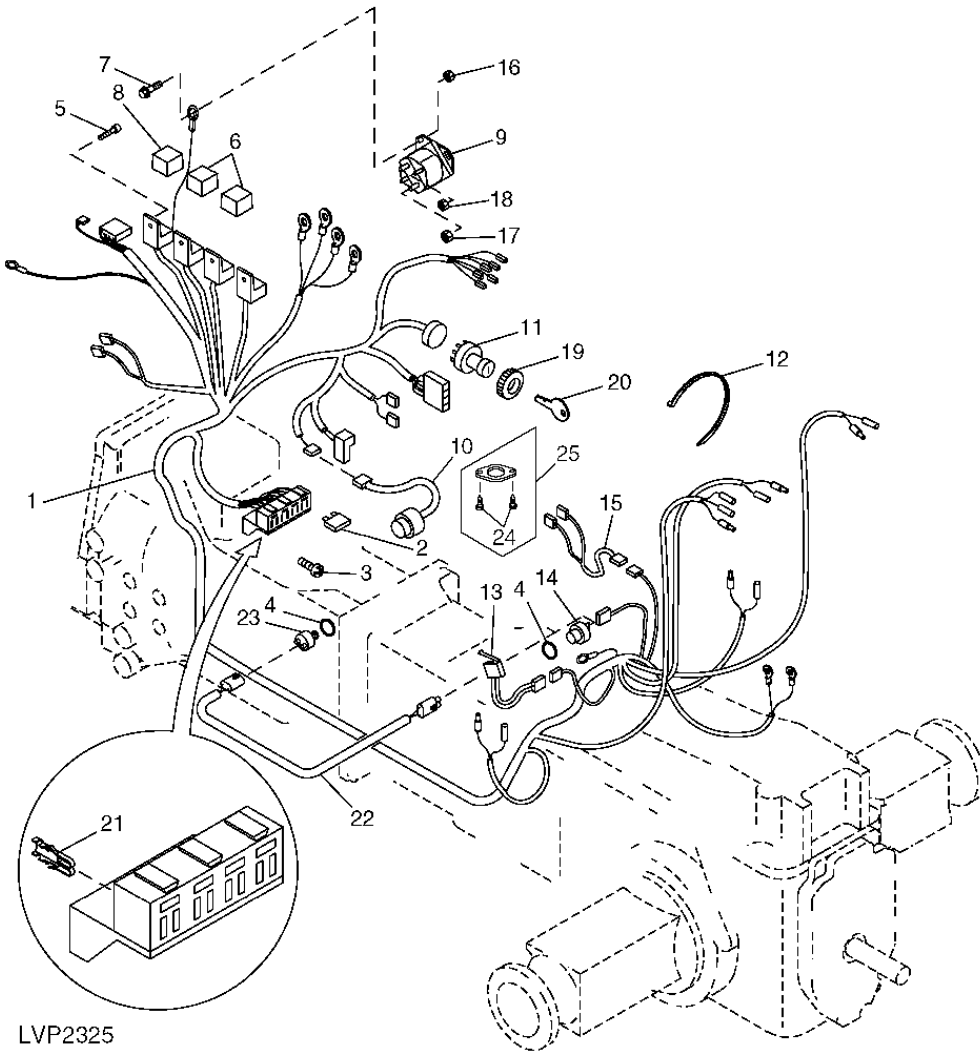


Catalog: 2615 | Grid: 0 | Section: 40 | Page: 155

Catalog Name: **5210, 5310, 5410 and 5510 Tractors**

Page Name: **REAR WIRING HARNESS, FUSES, RELAYS AND SWITCHES (WITHOUT CAB)**

Direction of Travel: 



LVP2325

key	PART NO.	PART NAME	QTY	SERIAL NO.	5210	5310	REMARKS
1	RE72202	Wiring Harness	1		X	X	(SUB FOR RE71070)
2	57M7120	Fuse	7		X	X	
	57M7146	Fuse	3		X	X	
3	37H91	Screw	2		X	X	0.190" X 1/2"
4	R26448	O-Ring	1		X	X	
5	37M7059	Screw	4		X	X	M5 X 12
6	LVA13729	Relay	2		X	X	(SUB FOR RE68327, THIS APPLICATION)
7	19M7775	Screw	2		X	X	M6 X 16 (HS=10.9)

8	RE262484	Diode	1		X	X	(SUB FOR RE39967 OR RE153894)
9	RE170320	Starter Relay	1	-XXXXXX	X	X	(SUB FOR RE38391)
<b>key</b>	<b>PART NO.</b>	<b>PART NAME</b>	<b>QTY</b>	<b>SERIAL NO.</b>	<b>5210</b>	<b>5310</b>	<b>REMARKS</b>
	RE164448	Starter Relay	1	XXXXXX-	X	X	
10	RE45962	Horn	1		X	X	(A)
11	RE45963	Rotary Sw itch	1		X	X	(B)
12	R44302	Tie Band	AR		X	X	
13	RE42470	Sw itch	1		X	X	(C)
14	RE39116	Sw itch Kit	1		X	X	(D) (G) (SUB FOR RE1 2411, THIS APPLICATION)
15	RE72047	Wiring Harness	1	-XXXXXX	X	X	(E)
16	14M7303	Flange Nut	2		X	X	M6
17	14H785	Nut	2		X	X	5/16"
18	14H631	Nut	2		X	X	0.190"
<b>key</b>	<b>PART NO.</b>	<b>PART NAME</b>	<b>QTY</b>	<b>SERIAL NO.</b>	<b>5210</b>	<b>5310</b>	<b>REMARKS</b>
19	R44342	Nut	1		X	X	
20	AR51481	Key	1		X	X	PKG OF 2
21	57M7507	Elec. Connector Terminal	AR		X	X	18-20 GAUGE
	57M7595	Elec. Connector Terminal	AR		X	X	14-16 GAUGE, (NLA) (ORDER 57M7594)
	57M7594	Elec. Connector Terminal	AR		X	X	10-12 GAUGE
22	RE63095	Wiring Harness	1		X	X	(D) (F)
23	RE39116	Sw itch Kit	1		X	X	(D) (F) (SUB FOR RE1 2411, THIS APPLICATION)
24	37H51	Screw	2		X	X	1/4" X 1/2"
25	RE72241	Seat Height Sw itch Kit	1		X	X	(B) (INCLUDES (2) 37H156 SCREWS) (SUB FOR RE72096)

(A) WARNING HORN WITH TIMER(B) KEY SWITCH

(C) REAR PTO SWITCH(D) NEUTRAL START SWITCH

(E) SEAT SWITCH(F) POWRREVERSER™ TRANSMISSION

(G) COLLARSHIFT/SYNCSHUTTLE™ TRANSMISSION