

Rear remote cannot hold high pressure after the engine is off, even engine is running. Cylinder can slowly extracts by the continuous vertical load from the implement.
Because rear remote valve itself is just a direction control valve to change the direction of flow by spool valve, and it has no function to keep pressure like pressure control such as relief valve for example.

1. Valve leak spec

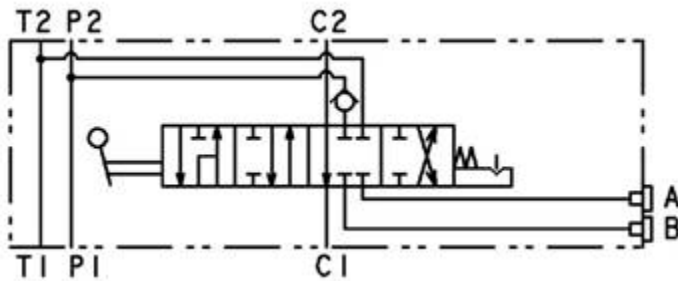
Valve leak spec of the YT3 rear remote valve is 5cc/min under 9.8MPa load pressure.

2. Recommendation

Rear remote function is designed to extract/retract cylinder which is no continuous force applied (e.g. open/close Flexwing mower etc.)

Rear remote valve on YT3 has no check valve to keep the oil in it's circuit after the control valve until cylinder.

For these type of use of cylinder which especially receives continuous vertical load such as lift cylinder, external check valve is required.



I recommend dealer to add double pilot operated check valve on lift link cylinder side.

If you search "top link cylinder" by image in the internet, you can see two different type of cylinder, one with check valve and one without.

External double pilot operated check valve will be able to prevent cylinder drift unless there is no internal leak at cylinder.



(Reference – YT2 Japan spec)

Japan model has same type of cylinder instead of lift link for leveling, but it has check valve on cylinder side (or valve side on some model) to avoid the leak from leveling valve.

