

Dual Rear SCV Kit

LVB25790



JOHN DEERE

INSTALLATION INSTRUCTIONS

R270824 03AUG10 (ENGLISH)

5083E, 5093E and 5101E Limited (S.N. -359999)

**John Deere Augusta Works
R270824 (03AUG10)**

LITHO IN U.S.A.
COPYRIGHT © 2010
DEERE & COMPANY
Moline, Illinois

All rights reserved.
A John Deere ILLUSTRATION ® Manual
Previous Editions
Copyright © 2008

R270824-19-03AUG10

Introduction

IMPORTANT: Read through this instruction thoroughly and familiarize yourself with the tractor before installing the dual rear SCV kit.

This instruction demonstrates procedures for installing a dual rear SCV kit on a tractor already equipped with a single rear SCV.

OUO6078,0000061 -19-28APR08-1/1

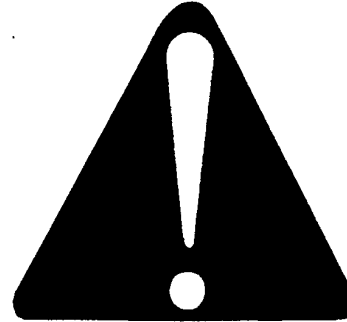
Recognize Safety Information

 **CAUTION:** To prevent bodily injury, machine damage or component failure:

- ☐ Use proper tools for the job.
- ☐ Don't take shortcuts; follow procedure as listed.
- ☐ Read and heed all **WARNINGS** placed within instructions.

This is a safety-alert symbol. When you see this symbol on your machine or in this manual, be alert to the potential for personal injury.

Follow recommended precautions and safe operating practices.

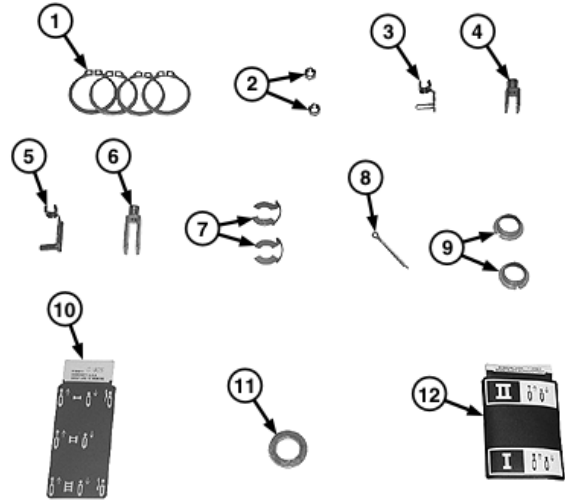


T81389 —UN—07DEC88

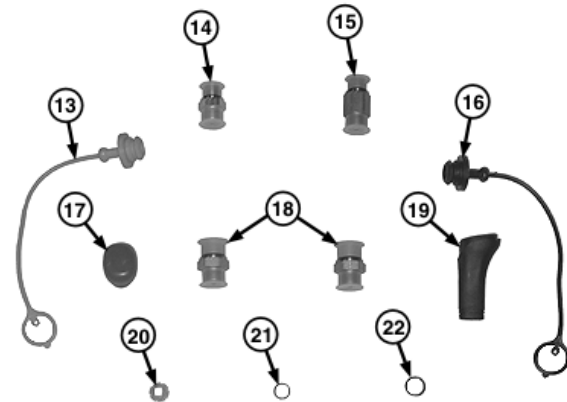
OUO1023,0002AA5 -19-02MAR07-1/1

Kit Parts List

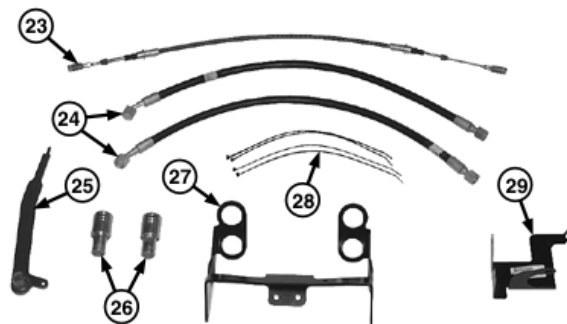
Item	Description	Quantity
1	Snap Ring	4
2	Nut	2
3	Spring Locking Pin (Valve End of Cable)	1
4	Yoke, Short (Valve End of Cable)	1
5	Spring Locking Pin (Lever End of Cable)	1
6	Yoke, Long (Lever End of Cable)	1
7	Clip	2
8	Cotter Pin	1
9	Bushing	2
10	Console Label	1
11	Washer	1
12	Rear SCV Label	1
13	Dust Plug (yellow)	1
14	Short Adapter Fitting (Hose to Valve)	1
15	Long Adapter Fitting (Hose to Valve)	1
16	Dust Plug (Black)	1
17	Cap	1
18	Adapter Fitting (hose to coupler)	2
19	Knob	1
20	Nut	1
21	O-Ring	1
22	O-Ring	1
23	Cable	1
24	Oil Line	4
25	Lever	1
26	Coupler	2
27	Dual Rear SCV Coupler Bracket	1
28	Tie Wrap	4
29	Bracket, Trailer Connector	1



LV12991—UN—02MAR07



LV12992—UN—02MAR07



LV12993—UN—02MAR07

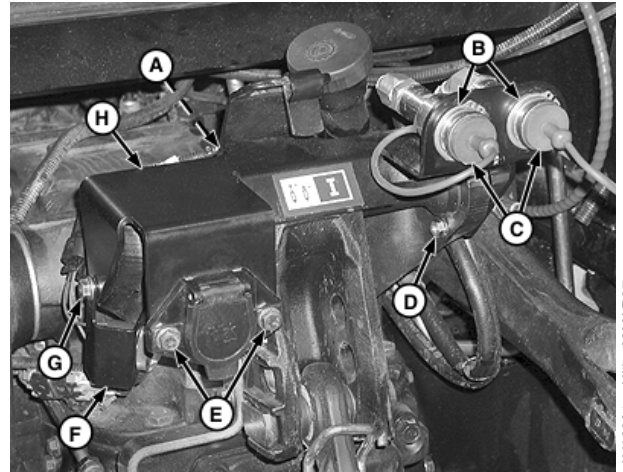
OUO1023.0002AA6 -19-06MAR07-1/1

Prepare Tractor

1. Park tractor on level surface and engage park brake. Place wheel chocks or wood blocks in front of and behind front wheels.
2. With engine off, completely lower rockshaft. Open rate-of-drop valve and move rockshaft position control lever and draft sensing lever fully forward.
3. Operate SCV levers forward and backward, if equipped, to release hydraulic pressure in the system.
4. Operate mid-mount valve joystick (forward and backward and side to side), if equipped, to release hydraulic pressure in system.
5. Remove right rear wheel.

NOTE: Retain all mounting hardware for reinstallation.

6. Remove and retain snap rings (B), couplers and adapter fittings (C).
7. Disconnect and discard two coupler to valve oil lines.
8. Remove and retain cap screws and nuts (E).
9. Remove and retain nut (A) and remove backup alarm ground terminal, if equipped.
10. Remove and retain cap screws and nuts (D and G). Remove backup alarm bracket (F), if equipped.



Single Rear SCV Bracket

- | | |
|--|------------------------------|
| A—Nut | E—Cap Screw and Nut (2 used) |
| B—Snap Ring (2 used) | F—Backup Alarm Bracket |
| C—Coupler and Adapter Fitting (2 used) | G—Cap Screw and Nut |
| D—Cap Screw and Nut | H—Single Rear SCV Bracket |

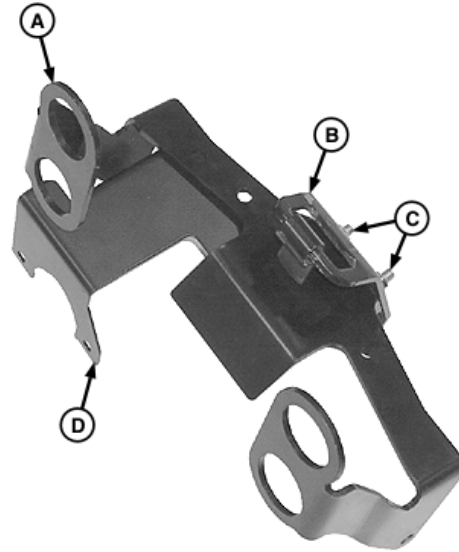
11. Remove single rear SCV bracket (H).

OUO1023,0002AA7 -19-06MAR07-1/1

Install Dual Rear SCV Bracket

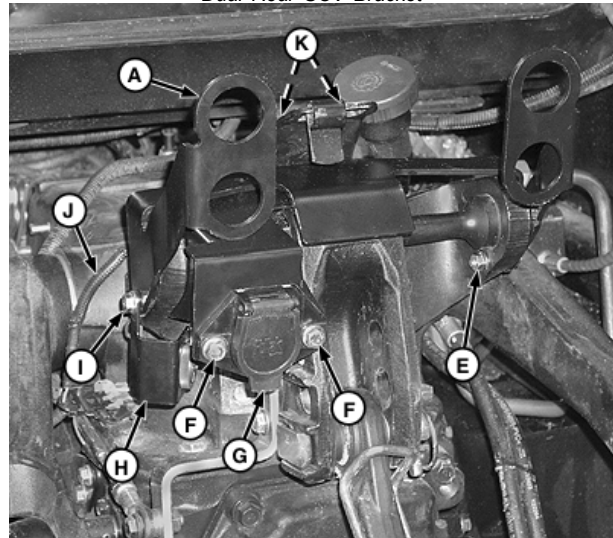
1. Remove and retain center link lock bracket (B) and cap screws and nuts (C) from single rear SCV bracket. Discard single rear SCV bracket.
2. Install center link lock bracket (B) and new trailer connector bracket (D) to new dual rear SCV bracket (A). Tighten all mounting hardware securely.
3. Install dual rear SCV bracket (A) on tractor using cap screws and nuts (E, I and K).
4. Install backup alarm (H), if equipped, under cap screw and nut (I). Secure backup alarm ground terminal (J).
5. Install trailer connector (G) using cap screws and nuts (F). Tighten all mounting hardware securely.

A—Dual Rear SCV Bracket (Item 27 on Parts List)	G—Trailer Connector
B—Center Link Lock Bracket	H—Backup Alarm
C—Cap Screw and Nut (2 used)	I—Cap Screw and Nut
D—Trailer Connector Bracket (Item 29 on Parts List)	J—Backup Alarm Ground Terminal
E—Cap Screw and Nut	K—Cap Screw (2 used)
F—Cap Screw and Nut (2 used)	



LV12995—UN—02MAR07

Dual Rear SCV Bracket



LV12996—UN—02MAR07

Dual Rear SCV Bracket

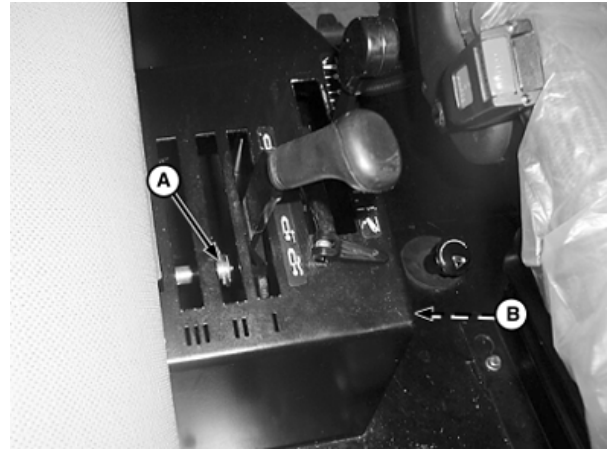
OUO1023,0002AA0 -19-06MAR07-1/1

Install Dual SCV Lever and Cable

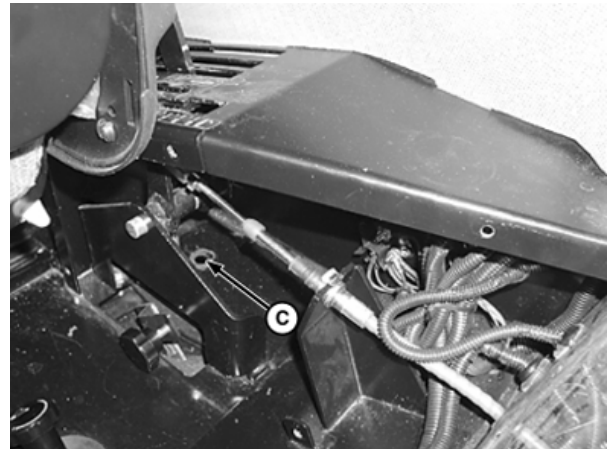
1. Remove five cap screws (B) and remove side panel.
2. Remove cotter pin (A).
3. Knock out perforated plug (C) in cab floor using a hammer and long punch.

A—Cotter Pin
B—Cap Screws

C—Plug



LV12987—UN—01MAR07



LV12988—UN—01MAR07

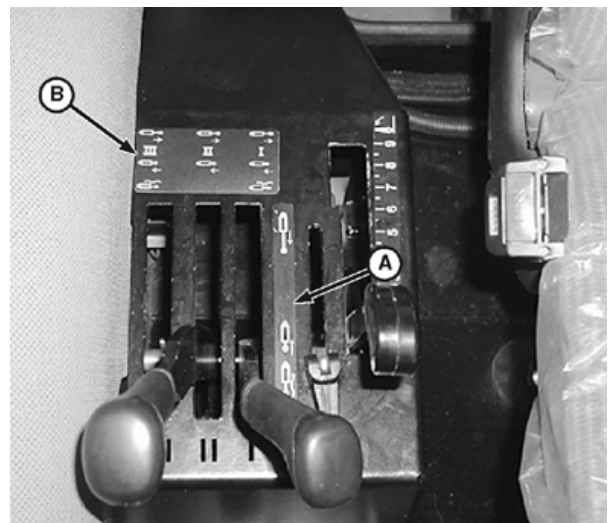
SCV Cable Hole

OOU1023,0002AAF -19-05MAR07-1/4

4. Remove and discard existing SCV console label (A).
5. Install new SCV console label (B), as shown in photo.

A—SCV Console Label

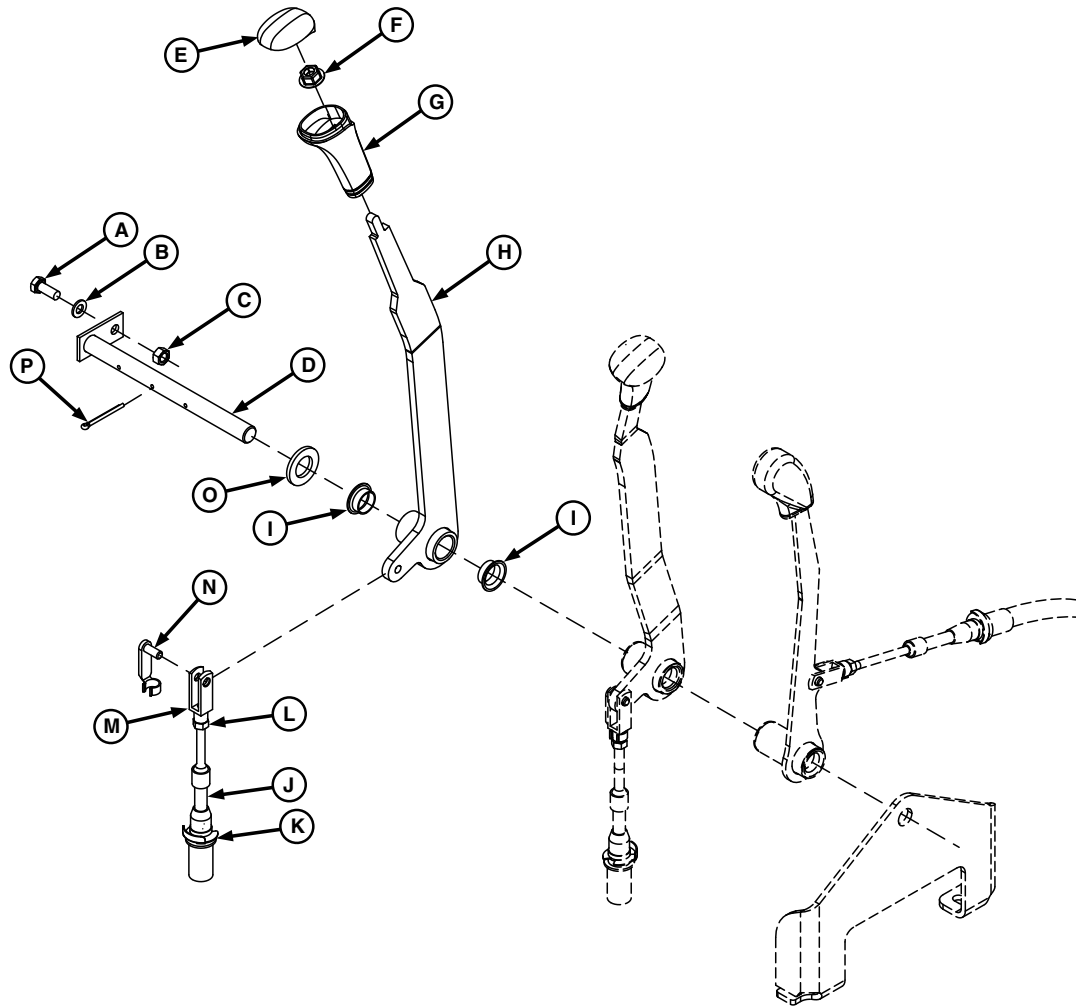
B—SCV Console Label (Item 10
on Parts List)



LV13012—UN—08MAR07

Continued on next page

OOU1023,0002AAF -19-05MAR07-2/4



Dual SCV Lever

A—Cap Screw
B—Washer
C—Nut
D—Pivot Pin

E—Cap (Item 17 on Parts List)
F—Nut (Item 20 on Parts List)
G—Knob (Item 19 on Parts List)
H—Lever (Item 25 on Parts List)

I—Bushing (2 used) (Item 9 on Parts List)
J—Cable (Item 23 on Parts List)
K—Clip (2 used) (Item 7 on Parts List)
L—Nut (2 used) (Item 2 on Parts List)

M—Yoke (Item 6 on Parts List)
N—Spring Locking Pin (Item 5 on Parts List)
O—Washer (Item 11 on Parts List)
P—Cotter Pin

6. Thread nut (L) and yoke (M) onto long end of cable (J). Thread yoke until cable end is flush with inside of yoke. Tighten nut against yoke.

NOTE: Pivot pin (D) is located on outside of right rear fender.

7. Remove cap screw (A), washer (B), nut (C) and pivot pin (D).
8. Install bushings (I) into lever (H).

NOTE: Make sure cable tab on lever is toward front of tractor during installation.

9. Install pivot pin (D), new washer (O) supplied in kit and lever (H). Make sure cable tab on lever is toward front of tractor during installation. Slide washer (O) against lever (H) and install cotter pin (P) through hole in pivot pin.

10. Install cap screw (A), washer (B) and nut (C).

11. Install knob (G), nut (F) and cap (E).

12. Route the end of cable (J) without yoke attached through hole in floor and secure using clip (K).

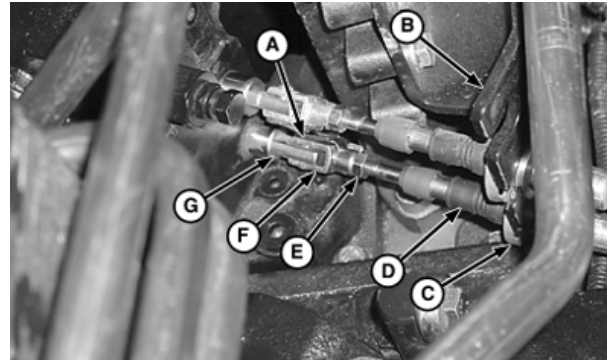
13. Connect yoke (M) to lever (H) using spring locking pin (N).

Continued on next page

OUC1023.0002AAF -19-05MAR07-3/4

LV12999 —UN—01MAR07

14. Thread nut (E) and yoke (F) onto cable (D) until cable end is flush with inside of yoke. Do not tighten nut against yoke at this time.
15. Route cable (D) through cable retaining bracket (B) and secure using clip (C).
16. Make sure dual SCV lever is centered in control console slot before connecting control cable yoke to valve spool,
17. Turn yoke in or out until hole in yoke and valve spool align. Connect yoke (F) to inner valve spool (G) using spring locking pin (A). Tighten nut (E) against yoke.



Valve End of Cable

- A—Spring Locking Pin (Item 3 on Parts List)
 B—Cable Retaining Bracket
 C—Clip (item 7 on Parts List)
 D—Cable (Item 23 on Parts List)
 E—Nut (Item 2 on Parts List)
 F—Yoke (Item 4 on Parts List)
 G—Inner Valve Spool

OUO1023,0002AAF -19-05MAR07-4/4

Install Couplers and Oil Lines

IMPORTANT: Clean dirt and debris away from threaded plugs in dual SCV to prevent contamination of hydraulic system.

1. Remove and discard two threaded plugs in the extend and retract ports of dual SCV.

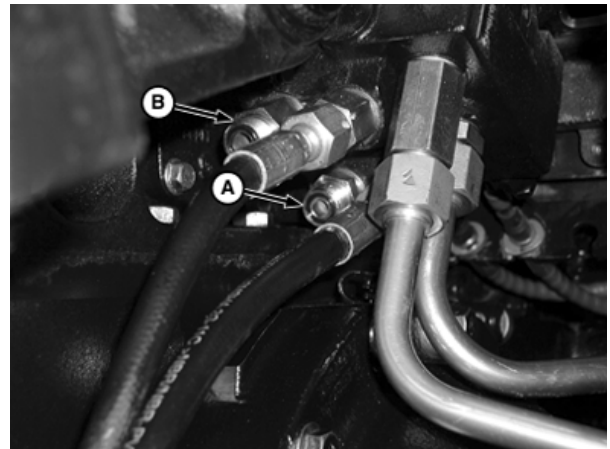
IMPORTANT: Make sure O-rings are in place on both ends of short and long adapter fittings (A and B) before installing them.

2. Install the short adapter fitting (A) in the forward port and the long adapter fitting (B) in the rear port of dual SCV. Tighten adapters to specification.

Specification

Long and Short Adapter

Fittings —Torque..... 69 N·m (51 lb-ft)



Dual SCV Ports

- A—Short Adapter Fitting (Item 14 on Parts List)
 B—Long Adapter Fitting (Item 15 on Parts List)

Continued on next page

OUO1023,0002CC1 -19-03AUG10-1/4

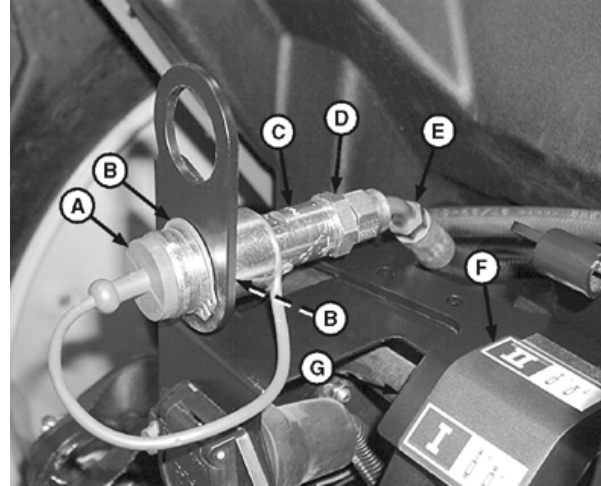
3. Install rear SCV label (F) on the center of the dual rear SCV coupler bracket (G) as shown.
4. Assemble one coupler (C), one dust plug (A) and one adapter fitting (D). Connect the 45° end of oil line (E). Tighten connection to specification. Repeat this step for remaining couplers, adapter fittings and oil lines.

Specification

Oil Line, Adapter Fitting and Coupler
 Connection—Torque..... 50 N•m (37 lb-ft)

5. Install snap ring (B) in the groove closest to the hose of each coupler (C).
6. Install each coupler into dual rear SCV coupler bracket (G) using snap ring (B).

A —Blue Dust Plug	E —Oil Line (Item 24 on Parts List)
B —Snap Ring (Item 1 on Parts List)	F —Rear SCV Label (Item 12 on Parts List)
C —Coupler (Item 26 on Parts List)	G —Dual Rear SCV Coupler Bracket (Item 27 on Parts List)
D —Adapter Fitting (Item 18 on Parts List)	



LV13003—UN—05MAR07

Continued on next page

OOU1023,0002CC1 -19-03AUG10-2/4

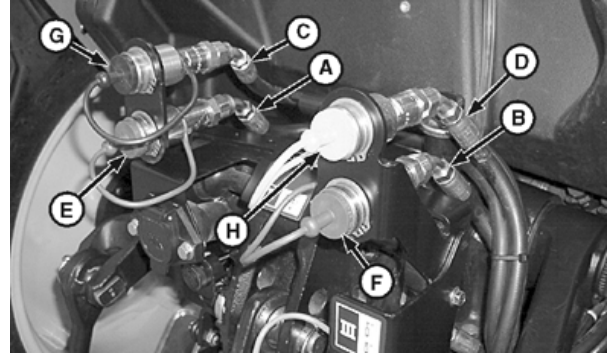
NOTE: Use the following table to aid during installation.

Mid-mount control valve hydraulic oil lines removed for clarity of photo.

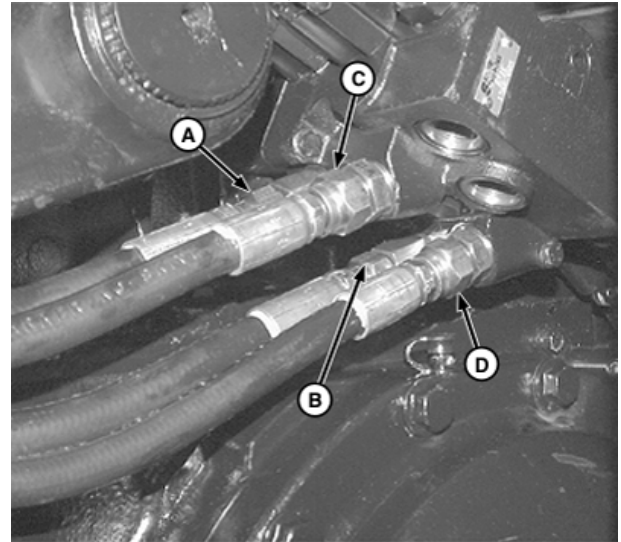
7. Coupler and Oil Line Location

Hose	Coupler Location on Bracket	Plug Color	SCV Port
(A)	SCV I Extend	Blue (E)	Inner Rear
(B)	SCV I Retract	Red (F)	Inner Front
(C)	SCV II Extend	Black (G)	Outer Rear
(D)	SCV II Retract	Yellow (H)	Outer Front

8. Install tie wraps, supplied in kit, around oil lines (A and C) and (B and D).



Coupler Locations

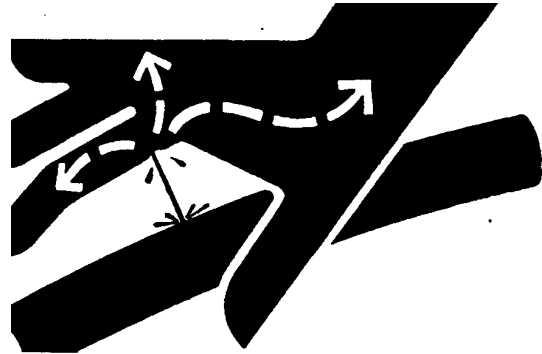


OUO1023,0002CC1 -19-03AUG10-3/4

CAUTION: Escaping fluid under pressure can penetrate the skin causing serious injury. Avoid the hazard by relieving pressure before disconnecting hydraulic or other lines. Tighten all connections before applying pressure. Search for leaks with a piece of cardboard. Protect hands and body from high-pressure fluids.

If an accident occurs, see a doctor immediately. Any fluid injected into the skin must be surgically removed within a few hours or gangrene may result. Doctors unfamiliar with this type of injury should reference a knowledgeable medical source. Such information is available from Deere & Company Medical Department in Moline, Illinois, U.S.A.

9. Start engine and check for leaks. Tighten connections as necessary.
10. Check for proper transmission/hydraulic fluid level. Add as needed.



11. Install right rear wheel. Tighten wheel cap screws to specification.

Specification

Wheel—Torque..... 600 N•m (445 lb-ft)

OUO1023,0002CC1 -19-03AUG10-4/4

