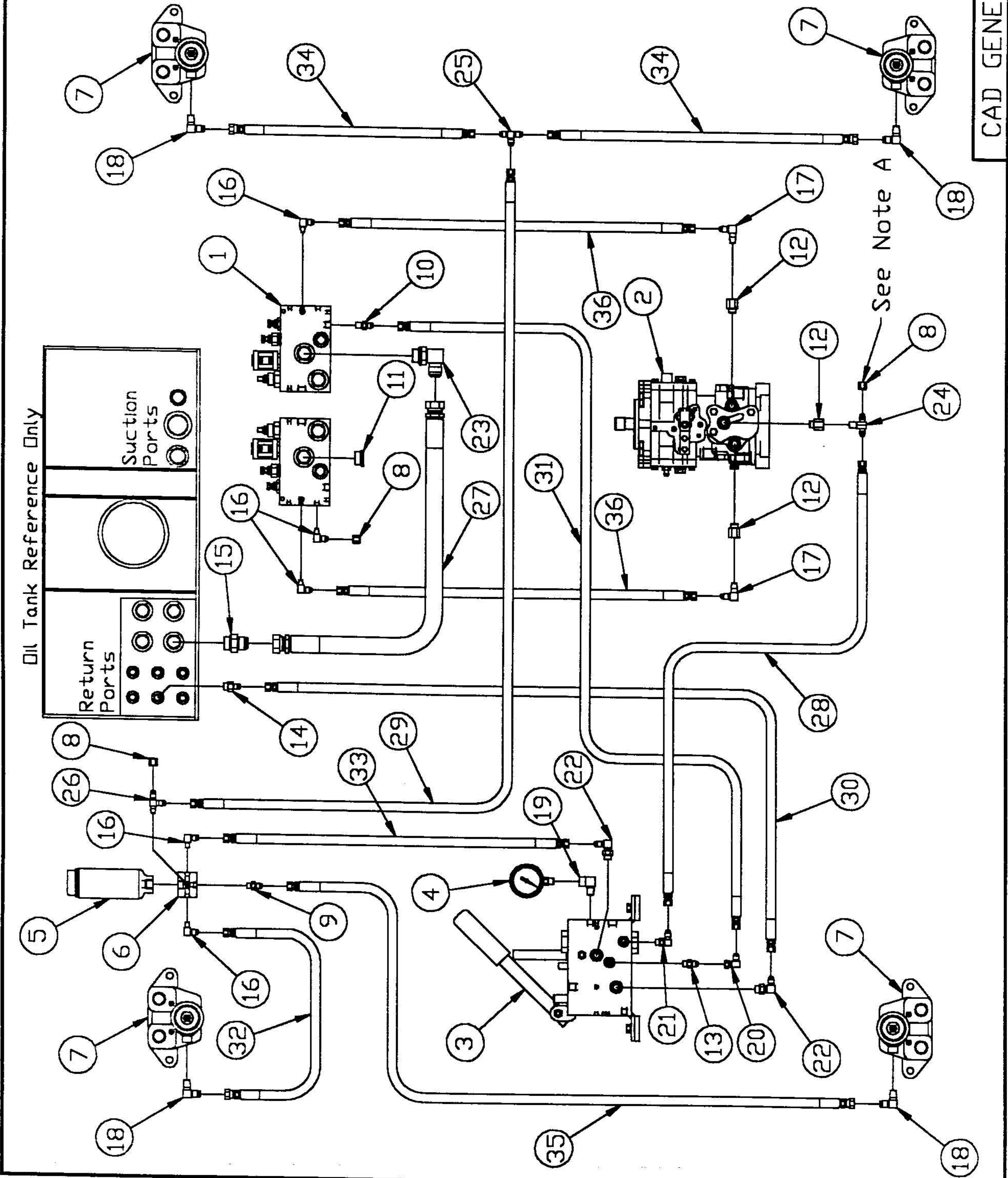


Ref	Part Number	Qty	Unit	Description
1	V241	1	EA	R.P.S. Valve
2	P097	1	EA	Variable Volumn Pump
3	M900	1	EA	Brake Tender
4	F039	1	EA	Pressure Gauge
5	V217	1	EA	Accumulator
6	V226	1	EA	Accumulator Manifold
7	M902	4	EA	Brake
8	129C-04	3	EA	Cap-4, IJcf
9	205-04-04	1	EA	Str.Adpt.-4, IJcm-4nptf
10	205-04-04	1	EA	Str.Adpt.-4, IJcm-4nptm
11	230P-12	1	EA	Plug-12orbm
12	269-06-04	3	EA	Reducer-6orbm-4nptf
13	315-04-04	1	EA	Str.Adpt.-4, IJcm-4orbm
14	315-04-06	1	EA	Str.Adpt.-4, IJcm-6orbm
15	315-12-12	1	EA	Str.Adpt.-12, IJcm-12orbm
16	405-04-02	5	EA	90 Elbow-4, IJcm-2nptm
17	405-04-04	2	EA	90 Elbow-4, IJcm-4nptm
18	405-06-04	4	EA	90 Elbow-6, IJcm-4nptm
19	409-04-04	1	EA	90 Elbow-4nptm-4nptf
20	506-04-04	1	EA	90 Elbow-4, IJcm-4, IJcf
21	515-04-04	1	EA	90 Elbow-4, IJcm-4orbm
22	515-04-06	2	EA	90 Elbow-4, IJcm-6orbm
23	515-12-12	1	EA	90 Elbow-12, IJcm-12orbm
24	605-04-04-04	1	EA	Tee-4, IJcm-4, IJcm-4, IJcm
25	705-04-04-04	1	EA	Tee-4, IJcm-4, IJcm-4, IJcm
26	755-04-02-04	1	EA	Tee-4, IJcm-2nptm-4, IJcm
27	H0752JJ027	1	EA	Hose 3/4 Dia. x 27'
28	H0251JJ096	1	EA	Hose 1/4 Dia. x 96'
29	H0251JJ092	1	EA	Hose 1/4 Dia. x 92'
30	H0251JJ078	1	EA	Hose 1/4 Dia. x 78'
31	H0251JJ075	1	EA	Hose 1/4 Dia. x 75'
32	H02514J6J048	1	EA	Hose 1/4 Dia. x 48'
33	H0251JJ032	1	EA	Hose 1/4 Dia. x 32'
34	H02514J6J021	2	EA	Hose 1/4 Dia. x 21'
35	H02514J6J012	1	EA	Hose 1/4 Dia. x 12'
36	H01814J4J018	2	EA	Hose 3/16 Dia. x 18'

Notes: A-This Cap Does Not Exist If Unit Is Equipped With Tilt Seat. See H081x2 For Tilt Seat Circuit.  
 B-For Units Produced July 96 and After.



See Note A

CLA

TITLE	PT-1850, PT-1845 Brake Circuit
DATE	11-22-96
APPROVED BY	Full
SCALE	Full
WEIGHT	D
DRAWN BY	J.Peery
DRAWING NO	H079x2

CAD GENERATED