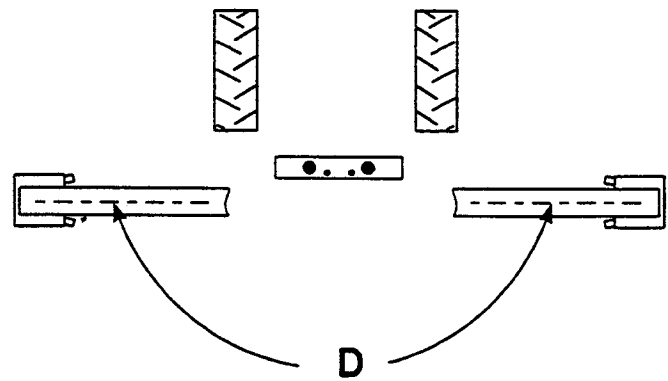
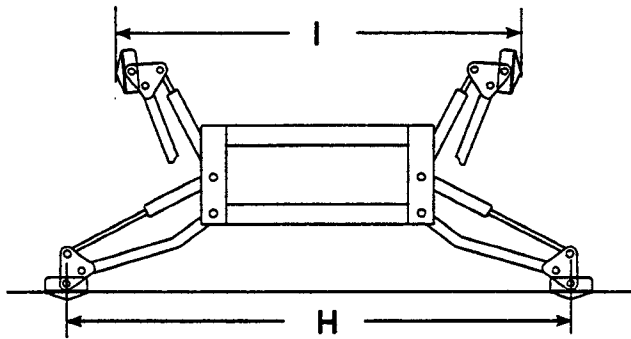
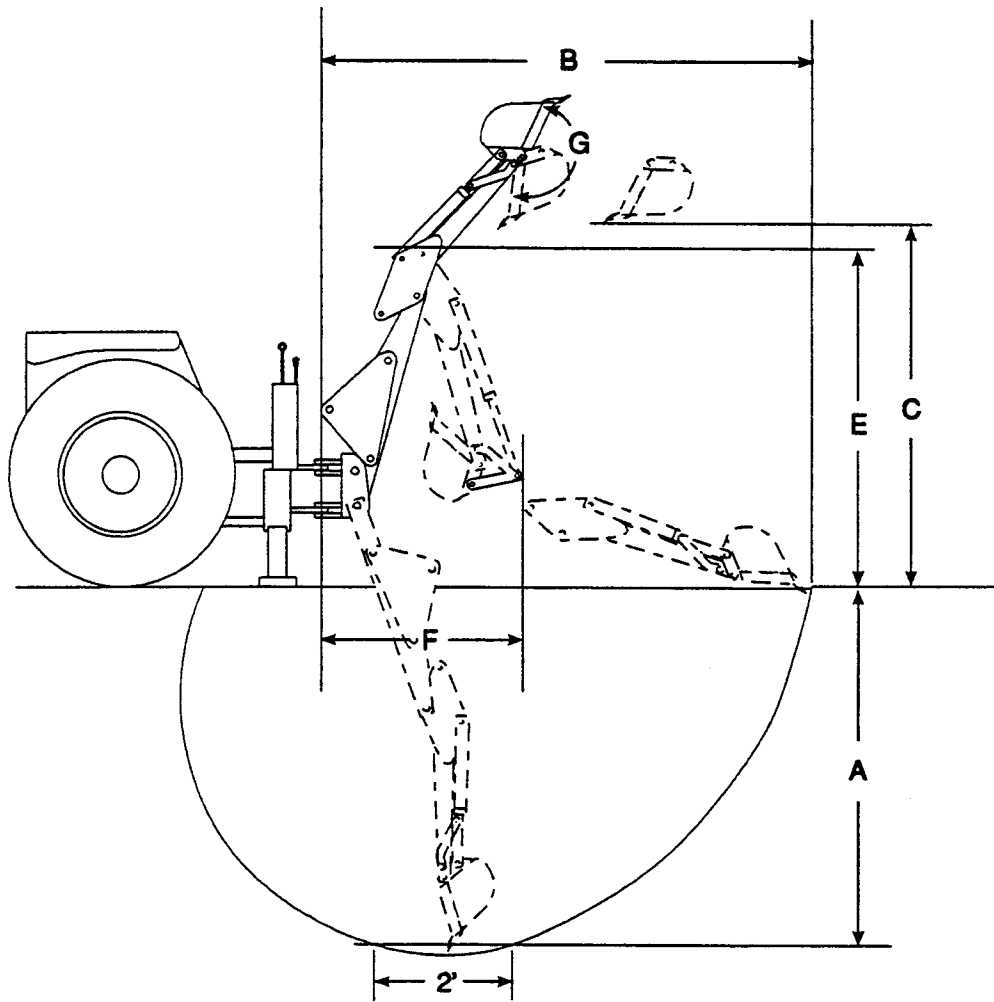


SPECIFICATIONS



SPECIFICATIONS

Specifications may vary depending on tractor model, tire size and bucket used and are subject to change without notification. Tractor must be equipped with ROPS and seat belt that will provide greater safety.

GENERAL DATA

A	Digging Depth (two foot flat bottom).....	90.4"
B	Reach from center line of Swing Pivot	119.5"
C	Loading Height (bucket at 60°).....	66"
D	Swing Arc.....	180°
E	Transport Height (maximum).....	74.8"
F	Transport Overhang	45.7"
G	Bucket Rotation.....	170°
H	Stabilizer Spread, down position	78"
I	Stabilizer Spread, up position	50"
J	Shipping Weight	872 lbs.
	Bucket Digging Force	2100 lbs.
	Dipperstick Digging Force	2675 lbs.

BUCKET DATA

BUCKETWIDTH	SAE STRUCK CAPACITY	SAE HEAPED CAPACITY	SHIPPING WEIGHT
9"	0.73 cu. ft.	0.87 cu. ft.	46 lbs.
12"	1.01 cu. ft.	1.24 cu. ft.	56 lbs.
16"	1.38 cu. ft.	1.76 cu. ft.	64 lbs.
18"	1.56 cu. ft.	2.02 cu. ft.	70 lbs.
24"	2.11 cu. ft.	2.82 cu. ft.	86 lbs.
12" HD	1.01 cu. ft.	1.24 cu. ft.	72 lbs.
36" Grave	2.78 cu. ft.	4.00 cu. ft.	114 lbs.
36" Muck	2.78 cu. ft.	4.00 cu. ft.	114 lbs.

CYLINDER DATA	PISTON DIA.	STROKE	RETRACTED LENGTH	EXTENDED LENGTH	ROD DIA.
Boom	2.75"	16.75"	24.25"	41.00"	1.50"
Dipperstick	2.75"	16.75"	24.25"	41.00"	1.50"
Bucket	2.25"	16.75"	24.25"	41.00"	1.50"
Swing	2.25"	9"	5.12"	14.12"	1.375"
Stabilizer	2.25"	10.25"	17.44"	27.75"	1.375"

OPERATING PRESSURE - 2000 PSI