

PARKS      PARKWAYS      GOLF COURSES      ARBORETUMS  
CEMETERIES      AIRPORTS      ESTATES      CAMPS      PASTURES  
STALK AND STUBBLE FIELDS      ORCHARDS

# The **MOTT** HAMMER - KNIFE MOWERS

Models  
F-4 and F-6

3

point hitch  
mounted

power take-off driven



for unparalleled

- ★ versatility
- ★ efficiency
- ★ safety
- ★ dependability
- ★ economy

in cutting large or  
small areas of

## LAWNS • WEEDS • LEAVES

over smooth or rough terrain

Manufactured and Warranted  
by

**C. W. MOTT**



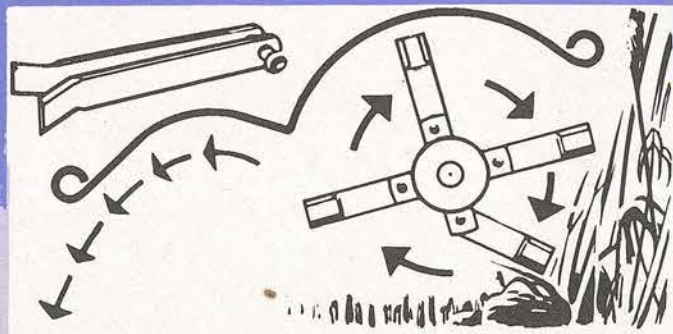
for **LAWNS-LEAVES-WEEDS**

4015 Eberly Avenue  
Brookfield, Illinois  
Hunter 5-9513



# The **MOTT** HAMMER-KNIFE MOWER

## Here's How it Works



*Here's what the  
HAMMER-KNIFE does!*

**MOWS LAWNS . . .** The HAMMER-KNIFE mower will do a fine even job of lawn mowing on well kept lawns. Lawns mowed with the HAMMER-KNIFE have that clean look—no unsightly dandelions, buckhorn, or other tall stemmed plants remain standing to mar the beauty of a velvety green lawn. The HAMMER-KNIFE can be adjusted through a wide range of cutting heights quickly. There is no need with the HAMMER-KNIFE to shave a lawn—leaving it susceptible to burning during dry spells.

**SHREDS WEEDS, STALKS, STUBBLE . . .** When you take the HAMMER-KNIFE into weeds as high as your head it cuts them into shreds and spreads the cuttings evenly on the ground—practically making a lawn in one pass. Mowing the weeds and dead grass in late fall or early spring brings the grass out healthy and strong weeks ahead of unmown areas. The HAMMER-KNIFE will shred stalks, stubble, and cover crops leaving the resulting mulch just right for plowing under—thus making it very easy to add valuable humus to the soil. Clipping pastures with the HAMMER-KNIFE before the weeds have a chance to go to seed will in a short time result in a pasture almost completely devoid of weeds.

**CHOPS LIGHT BRUSH . . .** The HAMMER-KNIFE chops light brush, depending upon concentration, up to one inch in diameter. The ground between trees in wooded areas can be cleared of light brush very easily with the HAMMER-KNIFE. Tree sprouts, which come up every spring in some sections, can be clipped in record time.

**MULCHES LEAVES . . .** With the leaf attachment, the HAMMER-KNIFE grinds the leaves fine so that they will not mat. The groundup leaves may be left right on the ground where they settle around the grass blades, making a fine mulch and enriching the soil. If, due to an extremely heavy covering of leaves, it is desired to remove some of them, the HAMMER-KNIFE will compact them so that it is much easier and quicker to sweep them up and handle them.

**WORKS IN ROCKS OR RUBBISH . . .** Because the knives are loosely hung, the HAMMER-KNIFE can be operated very successfully in rocky and trashy areas—areas strewn with rocks, tin cans, bottles, wire, bricks, etc. When encountering such hard objects the knives merely fold back out of the way. When clear, centrifugal

The HAMMER-KNIFE does not shear as does the reel type or sickle bar type of mower. The knife speed is what does the job. The solid steel shaft turns approximately 2000 RPMs. The loosely hung-pivoted knives, due to centrifugal force, stand straight out—their tips traveling more than 70 miles per hour. At this speed, practically nothing can remain standing in the path of the knives. The knives cut down on the front, pulling in tall grass and weeds as they cut, shredding them and spreading them evenly on the ground behind the mower. The HAMMER-KNIFE does not windrow the cuttings. In rocks and trash the loosely hung knives merely fold back out of the way and return to cutting position automatically when clear.

force automatically returns them to cutting position. Wire, which may wind up and should be removed before continuing to cut, does not damage the HAMMER-KNIFE in any way.

**LOW MAINTENANCE COST . . .** In spite of the many diversified cutting jobs which the HAMMER-KNIFE will do, and do under the toughest conditions, there is very little to maintain on it. About the only thing to replace on it are the knives, knife pins, and occasionally a belt. On lawns and other like areas where the knives are contacting only vegetation, it would probably be two or three years before all of the knives had to be replaced. On the other hand, where the knives are working in rocks and trash all day long, day in and day out (where no other mowing machine could begin to work) the knives would probably be ready for replacement in a month or sooner.

The knives will bend before they break and may be straightened several times. To sharpen, the edge is merely thinned down with a file or an emery wheel. There is no special setting to make when installing. Merely hang them on the pins and secure them with a cotter pin. That's all there is to it. No special tools or machines are required to service the knives. No special training is needed. Anybody can do it.

The knives are replaced at dime store prices.

### Only the HAMMER-KNIFE has all these features:

1. Knives . . . light weight and lots of them for safety of operation.
2. Knives . . . pivoted and free swinging for damage-free operation in rocks or rubbish.
3. Knives . . . with shedding angle at tips so that cutting is always done with a clean edge.
4. Knives . . . mounted in pairs, each knife backing up its mate for more cutting authority.
5. Knives spirally arranged—each pair overlapping its neighbor for complete cutting coverage.
6. Knives kept free from clogging by rear cut-off hood which strips cuttings from knives and deflects them to the ground evenly and without windrows.

*Available in 4 ft. and 6 ft. Widths*



STALKS AND STUBBLE



WEEDS



LAWNS

**SAFE . . .** No cuttings, rocks, or trash thrown out to the sides. Shape of hoods and cutting action deflects cuttings, sticks, stones, and other objects into the ground—Ideal for congested areas such as Highways, Housing Developments, Playgrounds, etc.

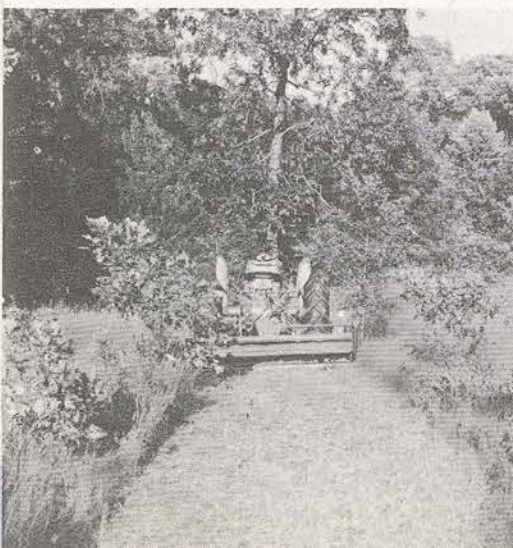


HIGHWAYS

### DEPENDABLE . . .

Tough jobs—such as mowing in areas strewn with sticks and bones—trash and stones accomplished with regularity—none of the usual down time for adjustment and repairs is encountered.

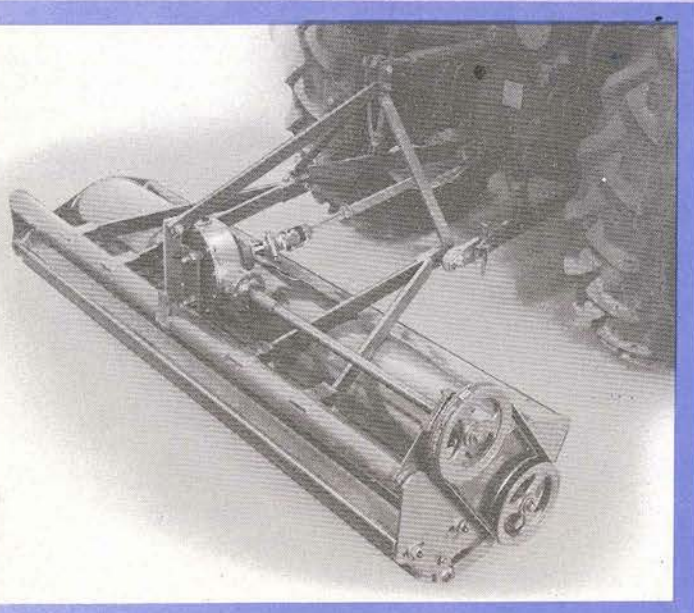
**ECONOMICAL . . .** Reduction of such items as cutter sharpening and repairing time, down time, operator lost time, mounting time, and mowing time make the HAMMER-KNIFE MOWER the most economical mower for you.



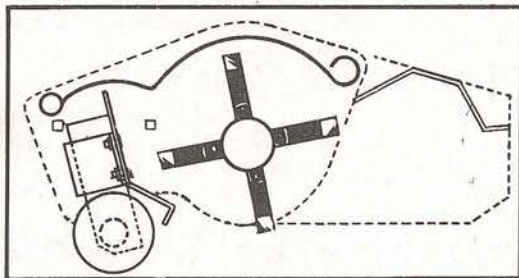
BRUSH



# SPECIFICATIONS



## LEAF ATTACHMENT



The leaf attachment consists of shields which are attached to the regular HAMMER-KNIFE mower and which act to hold the leaves in contact with the knives until they are ground up. One shield is placed behind the knives so that the leaves are not ejected from the rear of the mower but rather are carried over and deposited on the ground in front of the knives. Another hood is placed in front of the knives to catch the leaves and deflect them to the ground and to retain them directly in the path of the knives. In other words the leaves are cut and thrown on the ground in front of the knives where they build up a small roll. As the knives advance on this roll, the leaves are cut again and again. The degree of pulverization depends upon the kind of leaves being mulched and upon the conditions encountered. For best results the leaves should be dry and laying on cut grass. Elm leaves are ground almost to a powder whereas tough leathery leaves such as oak and maple are reduced anywhere from the size of a quarter to the size of a pea.

**WIDTH OF CUT** . . . Model F-4 is 4 ft. and Model F-6 is 6 ft.

**HEIGHT OF CUT** . . . Is  $\frac{3}{4}$  in.,  $1\frac{1}{2}$  in.,  $2\frac{1}{4}$  in., 3 in., and higher.

**KNIVES** . . . Being flexibly mounted, retract when hard objects are encountered and return to cutting position automatically when clear. The knives require no setting since they do not cut against any bed knife.

**CUTTER SHAFT** . . . Is ruggedly mounted in ball bearings. It is equipped with 120 (for the 4 ft.) or 180 (for the 6 ft.) light weight spring steel knives which are flexibly mounted in pairs. The individual knife can be removed or replaced by pulling one cotter pin and one headed pin.

**SPEED** . . . Of the mower cutter shaft is 2000 RPM at 540 RPM power take-off shaft speed.

**DRIVE** . . . Is by a universal jointed drive shaft from the tractor power take-off shaft to a right angle speed increaser gear box on the mounting frame. The gear box has hardened bevel gears and hardened shafts and is equipped with TIMKEN tapered roller bearings. From the gear box the drive is through an extension shaft to a 10-inch C-section V-belt pulley. Final drive is through a C-section heavy duty V-belt to a 10-inch pulley on the cutter shaft.

**MOUNTING FRAME** . . . Is tubular and plate construction—well braced and will fit all tractors for which three point hitches are available—such as FORD, FERGUSON, JOHN DEERE, CASE, ALLIS-CHALMERS, INTERNATIONAL FAST HITCH with three point adaptor, etc. Write for information on the three point hitch for your tractor if not standard equipment.

**NOTE:** Be sure to specify size of your power take-off shaft ( $1\frac{1}{8}$  or  $1\frac{3}{8}$ ) when ordering.

### 3-POINT HITCH Adapter Kits Available As Follows:

- WCA40 . . . Farmall Super A
- WCA41 . . . Farmall Super C
- WCA42 . . . Allis-Chalmers CA
- WCA43 . . . Allis-Chalmers WD
- WCA44 . . . John Deere (A, B, G, 50, 60)
- WCA45 . . . John Deere 70

