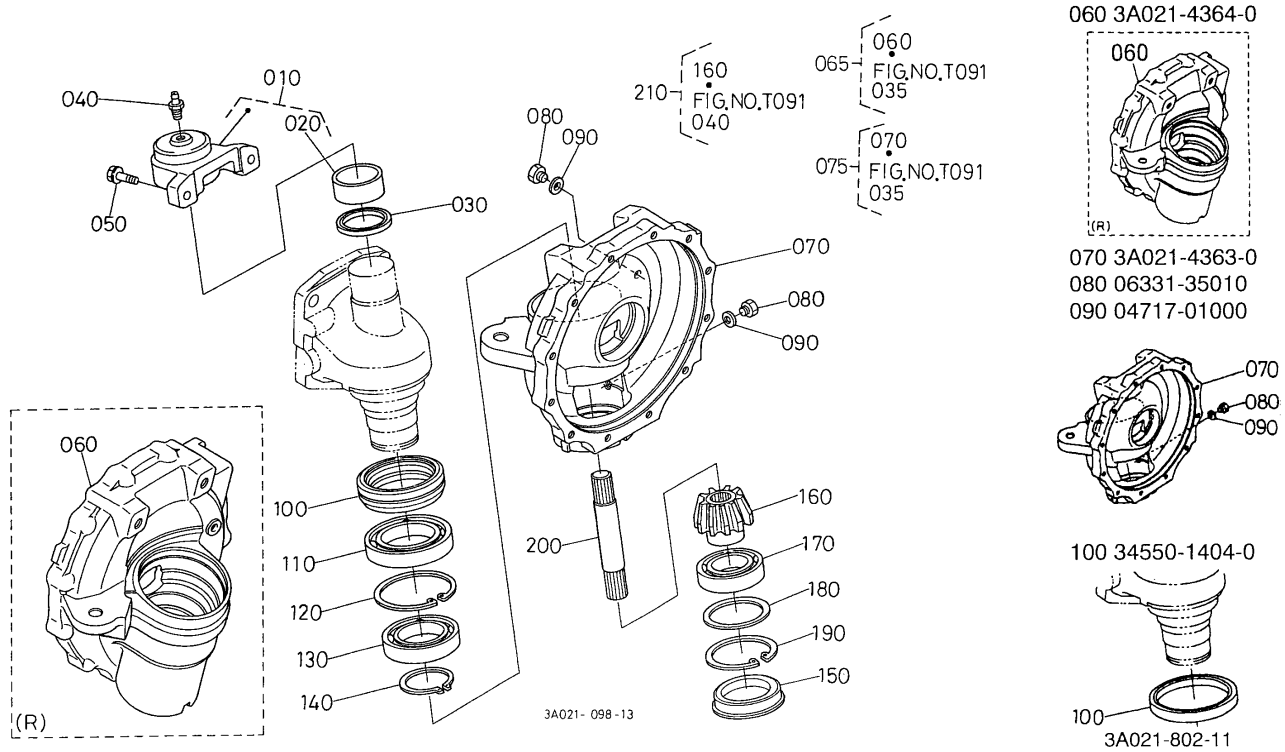


M5400DT -> FRONT AXLE/FRONT WHEEL/CHASSIS -> T09000 BEVEL GEAR CASE ## M5400DT

Update Date: 08/08/2014, Printing Date: 09/19/2018



M5400DT -> FRONT AXLE/FRONT WHEEL/CHASSIS -> T09000 BEVEL GEAR CASE ## M5400DT

Update Date: 08/08/2014, Printing Date: 09/19/2018

Interchangeable =, Not Interchangeable NI, New for Old >>, Old for New <<

No	Part Number	Part Name	Qty	RoundUp	IC	S/N	Remarks	Kg
010	3A021-43300	ASSY SUPPORT,CASE	2					2.442
020	3A021-43370	BUSH	2					0.1892
030	3A021-43350	SEAL,OIL	2					0.0374
040	06611-15010	NIPPLE GREASE	2					0.022
050	32701-52930	BOLT,UBS	4					0.11
060	3A021-43640	CASE FRONT GEAR RH	1			<=50415		0.0
060	3A021-43643	CASE FRONT GEAR RH	1		>>	>=50416		25.08
060	3A481-43640	CASE FRONT GEAR RH	1		=			27.28
060	3A022-43640	CASE FRONT GEAR RH	1		NI	>=80002		27.06
060	3A022-43642	CASE FRONT GEAR RH	1		>>	>=80567		27.06

M5400DT -> FRONT AXLE/FRONT WHEEL/CHASSIS -> T09000 BEVEL GEAR
CASE ## M5400DT

Update Date: 08/08/2014, Printing Date: 09/19/2018

Interchangeable =, Not Interchangeable NI, New for Old >>, Old for New <<

No	Part Number	Part Name	Qty	RoundUp	IC	S/N	Remarks	Kg
060	3A022-43643	CASE FRONT GEAR RH	1		>>	>=81159		27.06
065	3A021-97540	ASSY CASE(F-GEAR R)	1			<=81158		0.0
070	3A021-43630	CASE FRONT GEAR LH	1			<=50415		0.0
070	3A021-43633	CASE FRONT GEAR LH	1		>>	>=50416		25.08
070	3A481-43630	CASE FRONT GEAR LH	1		=			27.28
070	3A022-43630	CASE FRONT GEAR LH	1		NI	>=80002		27.06
070	3A022-43632	CASE FRONT GEAR LH	1		>>	>=80567		27.06
070	3A022-43633	CASE FRONT GEAR LH	1		>>	>=81159		27.06
075	3A021-97530	ASSY CASE(F-GEAR L)	1			<=81158		0.0
080	06331-35010	PLUG	2			<=50559		0.0264
080	06331-35010	PLUG	4			>=50560		0.0264
090	04717-01000	WASHER,SEAL	2			<=50559		0.0022
090	04717-01000	WASHER,SEAL	4			>=50560		0.0022
100	34550-14040	SEAL,OIL	2			<=81158		0.264
100	TA140-13040	SEAL,OIL	2		>>	>=81159		0.33
110	08101-06014	BEARING,BALL	2					1.32
120	04611-00950	CIR-CLIP,INTERNAL	2					0.11
130	08101-06012	BEARING,BALL	2					0.902
140	04612-00600	CIR-CLIP,EXTERNAL	2					0.0264
150	34550-13100	PLUG	2					0.22
160	3A021-43520	GEAR BEVEL	2			<=61480	9T NOT SALE ORDER BY REF.No.210	1.298
160	3A022-43520	GEAR,BEVEL	2		NI	>=61481	9T	1.331
170	32580-43550	BEARING,BALL	2					0.88
180	34550-12590	SHIM	2				1.0mm	0.011
180	34550-12600	SHIM	2				1.2mm	0.0396
180	34550-12620	SHIM	2				1.6mm	0.055
180	34550-12630	SHIM	2				1.8mm	0.055

M5400DT -> FRONT AXLE/FRONT WHEEL/CHASSIS -> T09000 BEVEL GEAR
CASE ## M5400DT

Update Date: 08/08/2014, Printing Date: 09/19/2018

Interchangeable =, Not Interchangeable NI, New for Old >>, Old for New <<

No	Part Number	Part Name	Qty	RoundUp	IC	S/N	Remarks	Kg
180	34550-12640	SHIM	2				2.0mm	0.066
190	04611-00850	CIR-CLIP,INTERNAL	2					0.0638
200	3A021-43410	SHAFT,BEVEL GEAR	2					1.617
210	3A022-97480	KIT GEAR	2					20.68