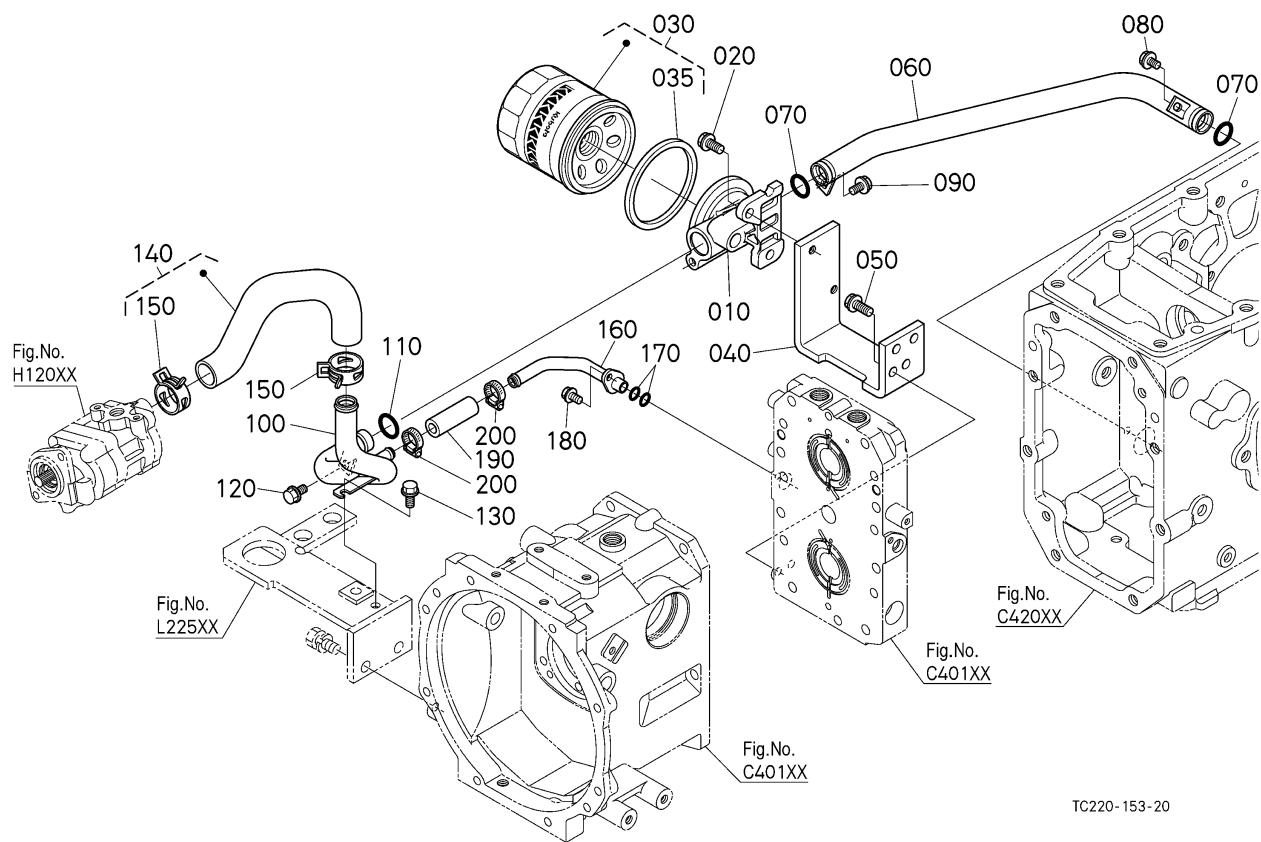


L3700SU -> HYDRAULIC SYSTEM -> H20500 HYDRAULIC OIL LINE (INLET) ## L3700SU

Update Date: 08/08/2014, Printing Date: 04/24/2017



L3700SU -> HYDRAULIC SYSTEM -> H20500 HYDRAULIC OIL LINE (INLET) ## L3700SU

Update Date: 08/08/2014, Printing Date: 04/24/2017

Interchangeable =, Not Interchangeable NI, New for Old >>, Old for New <<

No	Part Number	Part Name	Qty	RoundUp	IC	S/N	Remarks	Kg
010	TA040-33212	BRACKET(FILTER)	1					1.155
020	01774-61020	BOLT,FLANGE	2					0.0484
030	HH3A0-82623	CARTRIDGE,OIL FILTER	1					1.133
035	T0070-37720	MAGNET,OIL FILTER	1					0.088
040	TC220-33230	STAY,FILTER BRACKET	1					3.212
050	01774-61020	BOLT,FLANGE	2					0.0484
060	TC220-33310	PIPE,INLET	1					0.968
070	04816-07230	O RING	2					0.0022

L3700SU -> HYDRAULIC SYSTEM -> H20500 HYDRAULIC OIL LINE (INLET)

L3700SU

Update Date: 08/08/2014, Printing Date: 04/24/2017

Interchangeable =, Not Interchangeable NI, New for Old >>, Old for New <<

No	Part Number	Part Name	Qty	RoundUp	IC	S/N	Remarks	Kg
080	01754-50812	BOLT,FLANGE	1					0.022
090	01754-50816	BOLT,FLANGE	1					0.0242
100	TC220-56320	PIPE,INLET	1					0.836
110	04816-07230	O RING	1					0.0022
120	01754-50816	BOLT,FLANGE	1					0.0242
130	01754-50820	BOLT,FLANGE	1					0.033
140	TC220-33332	ASSY HOSE,INLET	1					0.396
150	16241-72970	BAND,PIPE	2					0.033
160	TC220-56330	PIPE,SUCTION HST	1					0.242
170	04816-00150	O RING	2					0.0066
180	01754-50814	BOLT,FLANGE	1					0.0264
190	TC220-56340	HOSE,SUCTION HST	1					0.055
200	K7561-33470	BAND,PIPE 23	2					0.0352