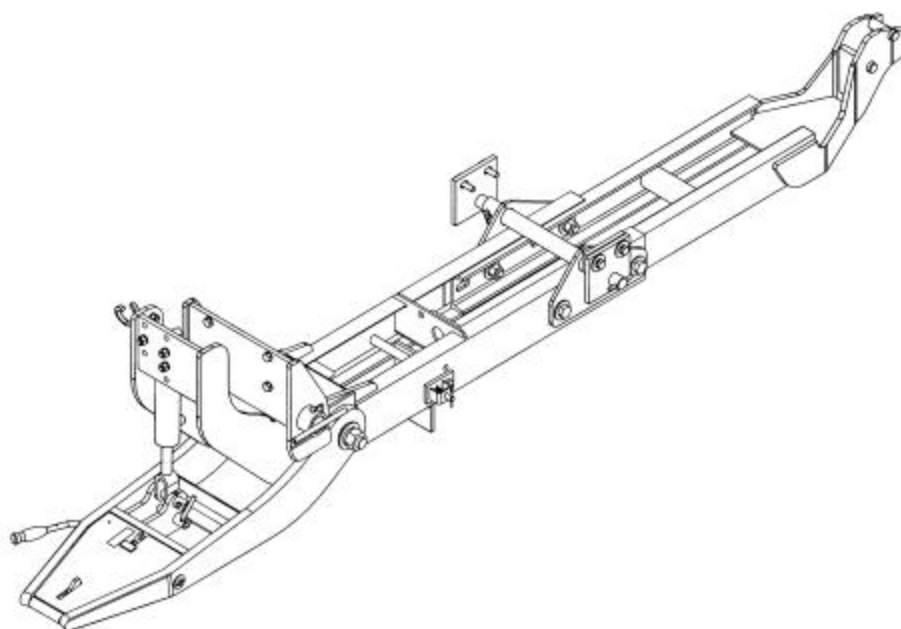


# ***OPERATOR'S AND PARTS MANUAL***



## ***MALE QUICK HITCH AND SUBFRAME - L2180-1***

**Mid PTO Kits – L2182 & L2183**

***Refer to your Kubota Dealer for Approved Tractor  
Applications***

**SERIAL NO. 2304408 AND UP**

**OM 0313QH-A  
08/03**

# **Kubota®**

**MANUAL PART NUMBER 70000-01943**



---

# TABLE OF CONTENT

---

INTRODUCTION – TO THE PURCHASER.....	2
SAFETY PRECAUTIONS .....	3
Before Operation.....	3
Notice .....	4
Subframe & Implements .....	4
Before Operation.....	4
Implements & Subframe Operation .....	5
Maintenance.....	7
Storage .....	8
DECALS.....	9
ASSEMBLY.....	10
Quick Hitch and Subframe Assembly .....	10
Preparation.....	10
Male Quick Hitch & Subframe Assembly.....	10
Drive Kit Installation – L2182 & L2183 (Options) .....	14
Hydraulic Components Installation .....	15
Mounting the Subframe Under the Tractor.....	17
Removing Subframe from the Tractor.....	22
MAINTENANCE .....	24
Subframe Maintenance .....	24
Maintenance of the L2182 & L2183 Drive Kits (Options) .....	24
PARTS .....	25
Introduction .....	25
Male Quick Hitch & Subframe – L2180.....	26
Male Quick Hitch .....	29
Drive Kit – L2182 (Option).....	30
Driveline (70001-00623).....	31
Drive Kit – L2183 (Option).....	32
Driveline (70001-00755).....	33
Driveline – Male Half (70000-02745) .....	34
TORQUE SPECIFICATION TABLE .....	35

---

# INTRODUCTION

---

## TO THE PURCHASER

All products are designed to give safe, dependable service if they are operated and maintained according to instructions. **Read and understand this manual before operation.**

This manual has been prepared to assist the owner and operators in the safe operation and suitable maintenance of the equipment. The information is applicable to products at the time of manufacture and does not include modifications made afterwards.

Read and understand this operator's manual before attempting to put equipment into service. Familiarize yourself with the operating instructions and all the safety recommendations contained in this manual and those labeled on the equipment and on the tractor. Follow the safety recommendations and make sure that those with whom you work follow them.

*To assist your dealer in handling your needs, please record hereafter the model number and serial number of your subframe and tractor. It is also advisable to supply them to your insurance company. It will be helpful in the event that equipment or tractor is lost or stolen.*

## Illustrations

The illustrations may not necessarily reproduce the full detail and the exact shape of the parts or depict the actual models, but are intended for reference only.

## Direction Reference

All references to right and left, forward or rearward, are from the operator's seat, facing the steering wheel.

## TRACTOR

## IMPLEMENT

MODEL: \_\_\_\_\_

SERIAL NUMBER: \_\_\_\_\_

DATE OF PURCHASE: \_\_\_\_\_

DEALER NAME: \_\_\_\_\_

---

# SAFETY PRECAUTIONS

---



## SAFETY FIRST

This symbol, the industry's "Safety Alert Symbol", is used throughout this manual and on labels on the machine itself to warn of the possibility of personal injury. Read these instructions carefully. It is essential that you read the instructions and safety regulations before you attempt to assemble or use this unit.



**DANGER :** Indicates an immediate hazardous situation which, if not avoided, will result in death or serious injury.



**WARNING :** Indicates a potentially hazardous situation which, if not avoided, could result in death or serious injury.



**CAUTION :** Indicates a potentially hazardous situation which, if not avoided, may result in minor or moderate injury.

**IMPORTANT :** Indicates that equipment or property damage could result if instructions are not followed.

**NOTE :** Gives helpful information.

All products are designed to give safe, dependable service if they are operated and maintained according to instructions. **Read and understand this manual before operation.** It is the owner's responsibility to be certain anyone operating this product reads this manual, and all other applicable manuals, to become familiar with this equipment and all safety precautions. Failure to do so could result in serious personal injury or equipment damage. If you have any questions, consult your dealer.

## **BEFORE OPERATION**

### **Children**

Tragic accidents can occur if the operator is not alert to the presence of children. Children are generally attracted to machines and the work being done. Never assume children will remain where you last saw them.

1. Keep children out of the operating area and under the watchful eye of another responsible adult.
2. Be alert and turn machine off if children enter the work area.
3. Before and when backing, look behind for small children.
4. Never carry children while operating the machine. They may fall off and be seriously injured or interfere with the safe operation of the machine.
5. Never allow children to play on the machine or attachment even when they are turned off.
6. Never allow children to operate the machine even under adult supervision.
7. Use extra care when approaching blind corners, shrubs, trees, or other obstructions that might hide children from sight.

---

# SAFETY PRECAUTIONS - continued

---

## **NOTICE**

A safe operator is the best assurance against accidents. All operators, no matter how experienced they may be, should read this operator's manual and all other related manuals before attempting to operate the equipment. Please read the following section and pay particular attention to all safety recommendations contained in this manual and those labeled on the equipment and on the tractor.

## **SUBFRAME & IMPLEMENTS**

### **Before Operation**

1. Read and understand both the tractor operator's manual and this operator's manual before operating the equipment. Know how to operate all controls and how to stop the unit and disengage the controls quickly. Lack of knowledge can lead to accidents.
2. Never wear loose, torn, or bulky clothing around the tractor, the subframe and the implements. It may catch on moving parts or controls, causing injury.
3. Before and during seasons, thoroughly inspect the area where the equipment is to be used and remove all objects that may be thrown or cause damage to the equipment.
4. Set transmission to neutral and disengage clutch, if equipped, before starting the engine.
5. Do not operate equipment in wintertime without wearing adequate winter garments. Always wear protective clothing.
6. Never attempt to make any adjustments while engine is running. Read this manual carefully to acquaint yourself with the equipment as well as the tractor operator's manual. Working with unfamiliar equipment can lead to accidents. Be thoroughly familiar with the controls and proper use of the equipment.
7. Keep all safety guards in place and verify hardware for proper tightening.
8. Check for moving parts excessive wear regularly. Replace worn parts with genuine parts.
9. Replace all missing, illegible, or damaged safety and warning decals. See list of decals in operator's manual.
10. Keep safety decals clean of dirt and grime.
11. Do not modify or alter this equipment or any of its components, or any equipment function without first consulting your dealer.
12. Make sure the tractor is counterweighted as recommended by your dealer. Weights provide the necessary balance to improve stability, traction and steering.

---

## SAFETY PRECAUTIONS - continued

---

### **Implements & Subframe Operation**

1. Before leaving the tractor unattended, take all possible precautions. Park the tractor/subframe on level ground, place the transmission in neutral, set the parking brake, disengage the PTO, lower the equipment to the ground, place all levers including auxiliary control levers in neutral, shut off the engine and remove the ignition key.
2. Before starting the tractor/ implement, inspect and clean every rotating part.
3. Prior to operation, clear work area of all objects that can be picked up and thrown. Mark all curbs, pipes, etc. that cannot be moved.
4. Be sure the PTO switch/lever is in OFF/disengaged position before starting engine.
5. Exercise extreme caution when operating on or crossing a gravel drive, walks, or roads. Stay alert for hidden hazards or traffic.
6. Do not carry passengers.
7. Keep clear of all rotating parts. Do not put hands or feet under, or into implement and subframe with engine running. Be especially observant of the implement areas of discharge, intake or all other mechanical motions.
8. Park the tractor/implement on level ground, place the transmission in neutral, set the parking brake, disengage the PTO, lower the equipment to the ground, place all control levers in neutral, shut off the engine, remove the ignition key and allow the rotating parts to stop BEFORE making any repairs, adjustments or inspections.
9. For your safety, do not work under any hydraulically supported machine elements, they may creep down, suddenly drop or be accidentally lowered.
10. If the implement starts to vibrate abnormally, disengage the PTO, stop the engine immediately and check for cause. Excessive vibration is generally a sign of trouble.
11. Do not run the engine indoors except when starting engine and transporting attachment in or out of building. Carbon monoxide gas is colorless, odorless and deadly.
12. Do not attempt to operate on steep slopes. If operating on slopes is necessary, exercise extreme caution when changing direction.
13. Never operate implement without guards, and other safety protective devices in place. All tractor and equipment shields and covers must be correctly installed at all times. When necessary to remove these, they must be reinstalled immediately.
14. Never operate implement near glass enclosures, automobiles, window wells, embankments, etc., without proper adjustment of equipment discharge angle.
15. Never operate machine at high transport speeds on a slippery surface.
16. Use extra caution when backing up.
17. Disengage power to implement when transporting or when not in use.
18. Never operate the implement without good visibility and lighting.
19. Prolonged exposure to loud noise can cause impairment or loss of hearing. Wear a suitable hearing protective device such as earmuffs or earplugs to protect against objectionable or uncomfortable noises.

---

## **SAFETY PRECAUTIONS - continued**

---

- 20.** Never allow anyone near the work area.
- 21.** Securely connect equipment drive shaft. Check that all tractor and equipment drivelines are in good working order. Equipment drive shaft coupler must securely lock to and be retained by annular groove on tractor drive shaft.
- 22.** Never allow anyone to operate the implement until they have read the manual completely and are thoroughly familiar with basic tractor and implement operation.
- 23.** Make sure the tractor is counterweighted as recommended by your dealer. Weights provide the necessary balance to improve stability, traction and steering.
- 24.** Always make sure all implement components are properly installed and securely fastened BEFORE operation.



---

## SAFETY PRECAUTIONS - continued

---

### **MAINTENANCE**

#### **ALWAYS USE GENUINE PARTS WHEN REPLACEMENT PARTS ARE REQUIRED**

1. Keep the tractor and implement properly maintained.
2. Park the tractor/implement on level ground, place the transmission in neutral, set the parking brake, disengage the PTO, lower the equipment to the ground, place all control levers in neutral, shut off the engine and remove the ignition key and allow the rotating parts to stop BEFORE making any implement adjustments.
3. To avoid injury, do not adjust, unblock the driving system, or service the implement with the tractor engine running. Make sure rotating components have completely stopped before leaving the operator's seat.
4. Keep the tractor/implement clean. Snow, dirt or ice build-up can lead to malfunction or personal injury from thawing and refreezing in garage.
5. Always wear eye protection when cleaning or servicing the implement or subframe.
6. DO NOT service the tractor while the engine is running or hot, or if the unit is in motion. Always lower implement to the ground. If necessary to service implement in raised position, securely support with stands or suitable blocking before working underneath. Do not rely on hydraulically supported devices for your safety. They can settle suddenly, leak down, or be accidentally lowered.
7. Do not attempt to service machine, clear obstructions or unclog the equipment with the engine running. Always shut off engine and allow all motion to cease.
8. The manufacturer will not claim responsibility for fitment of unapproved parts and/or accessories and any damages as a result of their use.
9. Make sure all shields and guards are securely in place following all service, cleaning, or repair work.
10. Do not modify or alter this equipment or any of its components or operating functions. If you have questions concerning modifications, consult with your dealer.
11. Do not operate a unit that is defective or has missing parts. Make sure that all recommended maintenance procedures are completed before operating the unit.
12. Check all controls regularly and adjust where necessary. Make sure that the brakes are evenly adjusted.
13. Periodically check all nuts and bolts for tightness, especially wheel hub and rim nuts.
14. Escaping hydraulic/diesel fluid under pressure can penetrate the skin causing serious injury. Do not use your hands to check for leaks. Use a piece of cardboard or paper to search for leaks. If you are injured by escaping high pressure fluid, see a medical doctor at once.
15. Stop engine and relieve pressure before connecting or disconnecting hydraulic lines. Tighten all connections before starting engine or pressurizing lines.

---

## SAFETY PRECAUTIONS - continued

---

### **STORAGE**

**Before storing the subframe or implement, certain precautions should be taken to protect it from deterioration.**

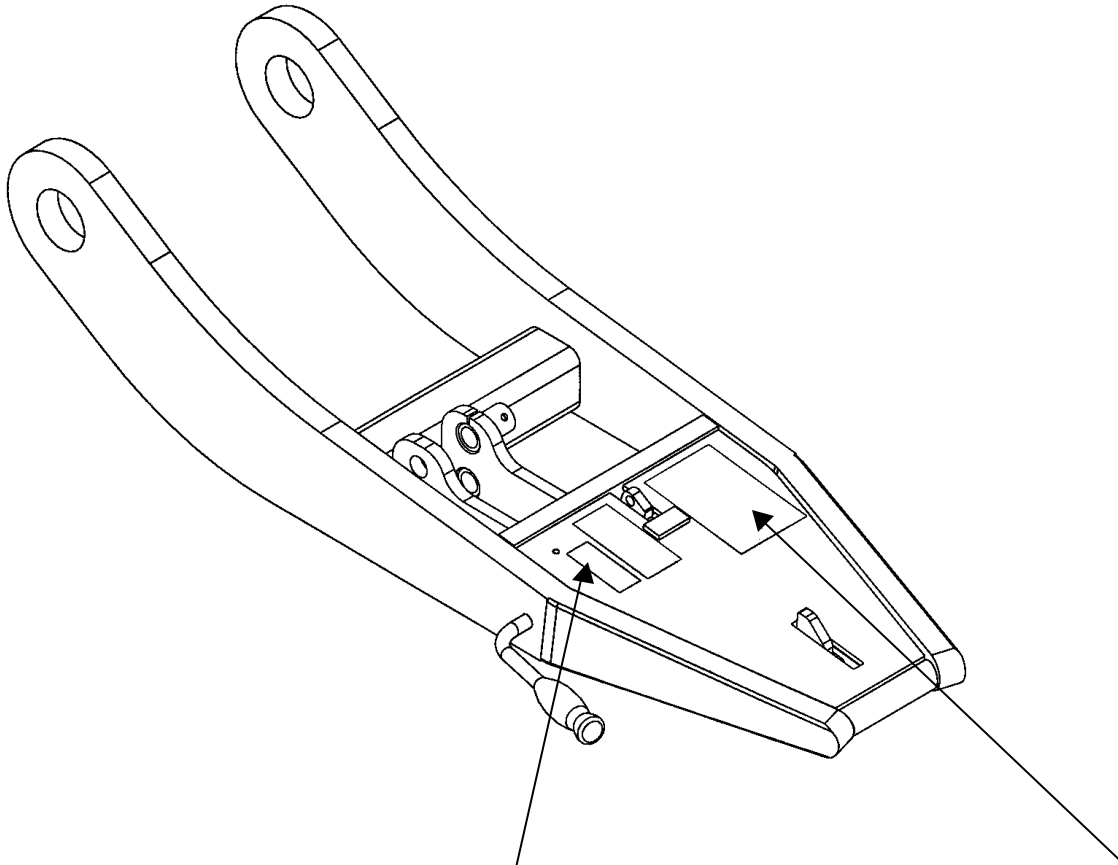
1. Clean the subframe and implement thoroughly.
2. Make all the necessary repairs.
3. Replace all safety signs that are damaged, lost, or otherwise become illegible. If a part to be replaced has a sign on it, obtain a new safety sign from your dealer and install it in the same place as on the removed part.
4. Repaint all parts from which paint has worn or peeled.
5. Lubricate the subframe and implement as instructed under "**Maintenance**" section.
6. When the subframe and implement are dry, oil all moving parts. Apply oil liberally to all surfaces to protect against rust.
7. Store in a dry place.
8. If equipment has hydraulic components, install protective plugs and caps on the quick couplers.

---

# DECALS

---

**Replace Immediately if Damaged**



**IMPLEMENT COUPLER**  
US PATENT # 4,778,195  
CANADA PATENT # 1,315,593  
297

**70060-04251  
(662675)**

## **ATTACHING INSTRUCTIONS**

1. Insert subframe into attachment completely.
2. Lock in place by moving lever forward to "Lock" position and secure with linch pin.
3. If equipped with P.T.O. drive line, connect to tractor P.T.O. and lock in place.
4. If equipped with lift assist springs, lift the attachment and attach springs.

UNLOCK

LOCK



**70060-01437  
(657364)**

113

# ASSEMBLY

## QUICK HITCH AND SUBFRAME ASSEMBLY

The Quick Hitch and the Subframe are partially assembled at the factory, however, parts contained in the bag must be installed. Use the present manual and lay out all parts for assembly. Separate bolts and nuts into various sizes. After assembly, torque all the bolts according to the Torque Specification Table enclosed at the end of the manual.


### Preparation:

Remove the mower from the tractor by following the instructions in the tractor's operator's manual.

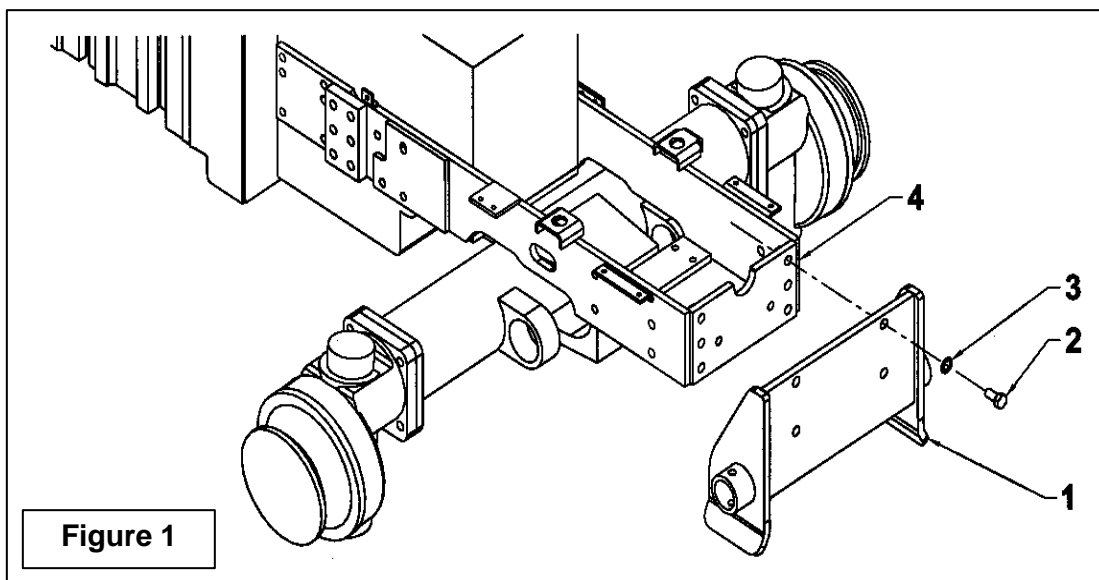
**IMPORTANT:** Detach the front loader boom before installing the subframe. The subframe and the front loader boom must never be installed simultaneously on the tractor.

Remove the grill guard from the front of the tractor before installing the subframe. The grill guard and the subframe must never be installed simultaneously on the tractor.

### Assembling the Male Quick Hitch and the Subframe

 **WARNING:** To avoid serious personal injury: Park the tractor on level ground, place the transmission in neutral, set the parking brake, disengage the PTO, place all control levers in neutral, shut off the engine, remove the ignition key and allow the rotating parts to stop **BEFORE** attaching the subframe underneath the tractor.

1. Place all subframe components on a clean and flat surface, near the tractor.
2. **(FIGURE 1)** Make sure to position the front subframe bracket (item 1) as indicated on figure 1 and secure using four M14 x 1.5 x 40mm bolts (item 2) and 14mm interior teeth lockwashers (item 3). Tighten the bolts to 93 lbs-ft. or 126 N-M.

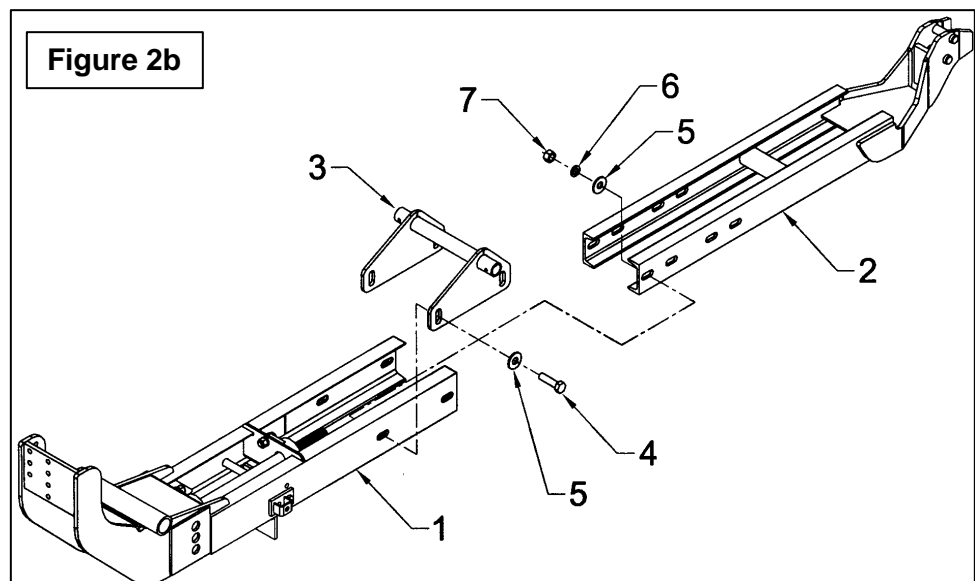
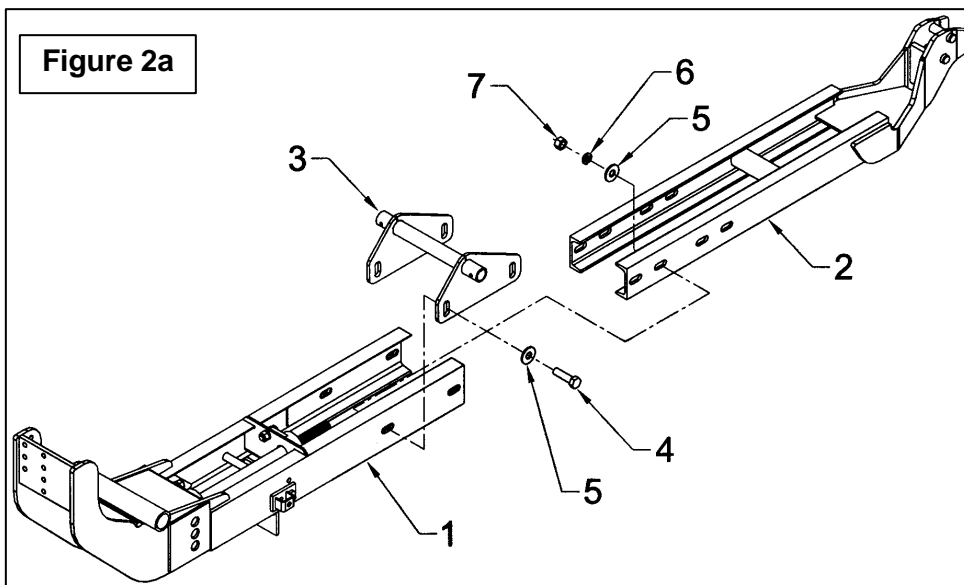


# ASSEMBLY

3. (FIGURE 2a or 2b) Assemble the rear subframe (item 2), the front subframe (item 1) and the mid support (item 3) using four 3/4"NC x 2 3/4" bolts (item 4), 13/16" flatwashers (item 5), 3/4" lockwashers (item 6) and 3/4"NC nylon insert locknuts (item 7). Assemble according to figure 2a for tractor models L3130, L3430 and L3830 and according to figure 2b for tractor models L4330, L4630 and L5030.

**IMPORTANT:** Make sure the mid support (item 3) is assembled as indicated on figure 2a or 2b.

**NOTE:** Do not tighten the four 3/4"NC x 2 3/4" bolts (item 4) until the subframe is well positioned under the tractor.



# ASSEMBLY

4. (FIGURE 3) Grease the outside of the pivot bushings (item 1) and secure the male quick hitch (item 2) to the front subframe (item 3) using two 1 1/8"NC x 4" bolts (item 4), pivot bushings (item 1), 1 1/4" flatwashers (item 5), 1 1/8" lockwashers (item 6) and 1 1/8"NC nylon insert locknuts (item 7). Tighten bolts between 600 and 840 lb-ft or 814 and 1139 N-M.

**NOTE:** To tighten these bolts, you can use a 4 feet long pipe to increase the tool length. Apply between 150 and 204 pounds weight (approx. one man weight), at the end of the lever.

**IMPORTANT:** To attach the male quick hitch (item 2) to the front subframe (item 3):

- Use position "A" when distance "L" between the front of the tractor and the ground is 17 3/4" and less.
- Use position "B" when distance "L" is between 17 3/4" and 19 3/8".
- Use position "C" when distance "L" is 19 3/8" and more.

5. (FIGURE 3) Secure cylinder support (item 8) to front subframe (item 3) using three 1/2"NC x 1 3/4" bolts (item 9), 1/2" lockwashers (item 10) and 1/2"NC nylon insert locknuts (item 11). Tighten bolts to 88 lbs-ft or 119 N-M.

**IMPORTANT:** Secure the cylinder support (item 8) at position "A", "B", or "C" as chosen in the section "IMPORTANT" of paragraph 4.

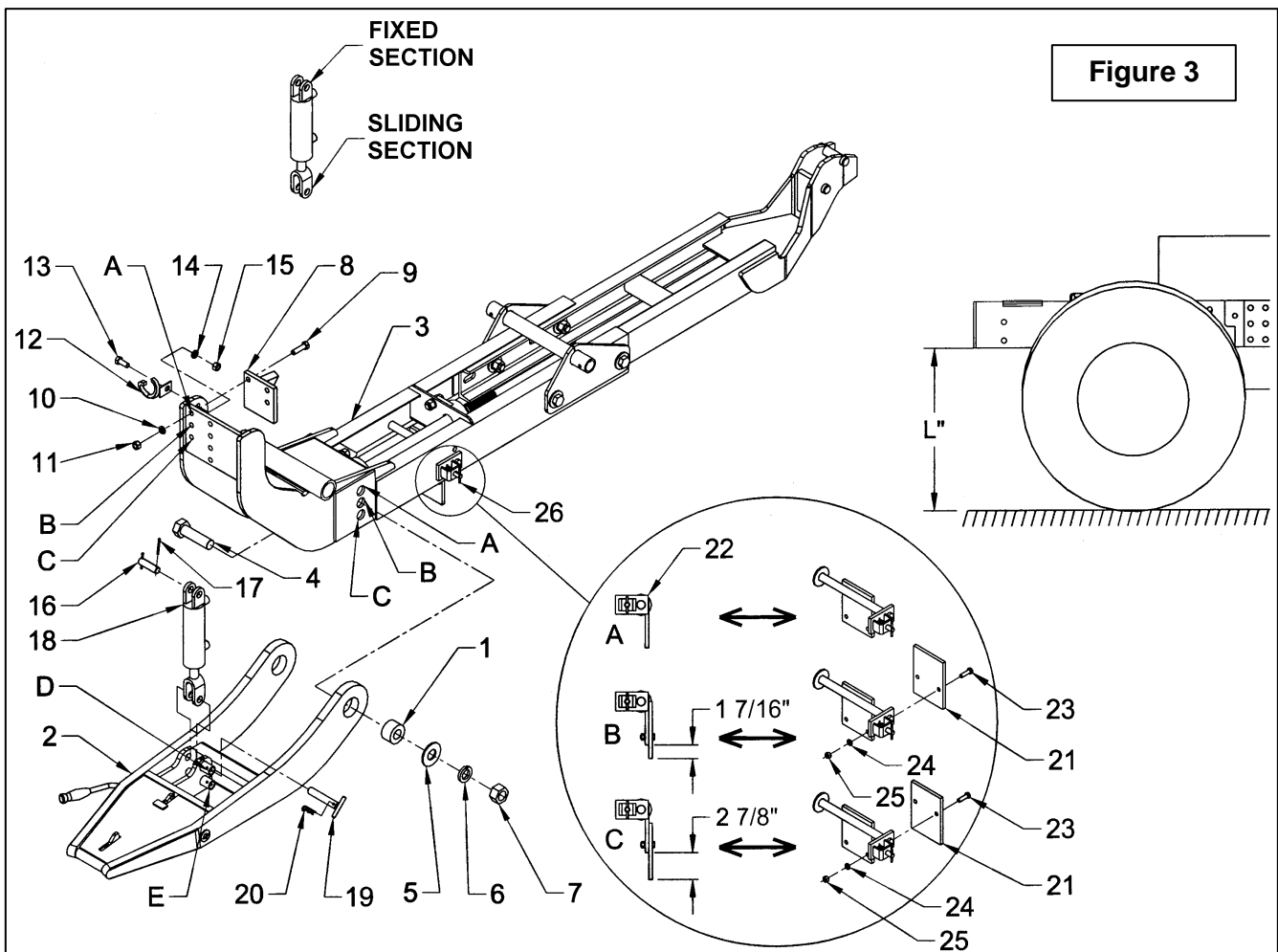


Figure 3

# ASSEMBLY

6. **(FIGURE 3)** Secure the hose support (item 12) to the front subframe (item 3) using a 1/2"NC x 1 1/4" bolt (item 13), 1/2" lockwasher (item 14) and 1/2"NC nylon insert locknut (item 15). Tighten bolt to 88 lbs-ft or 119 N-M.

**NOTE:** This hose support will be used only to support hoses of equipments compatible with the subframe: blade, rotary broom or snowblower.

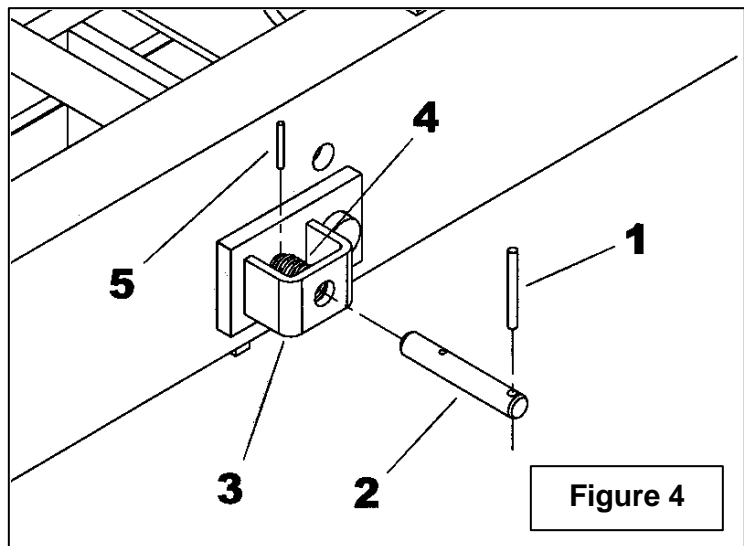
7. **(FIGURE 3)** Remove the two 3/4" x 2 5/8" pins (item 16) already installed on the cylinder, by removing one cotter pin (item 17).
8. **(FIGURE 3)** Point the cylinder's hydraulic ports towards the rear of the subframe and attach the fixed section of the cylinder (item 18) to the cylinder support (item 8) using one 3/4" x 2 5/8" pin (item 16) and one cotter pin (item 17). The second 3/4" x 2 5/8" pins and the other two cotter pins will not be used again. Place the sliding section of the cylinder (item 18) at position "D" of the male quick hitch (item 2) and secure with the 3/4" "T" pin (item 19) and the 3mm x 65mm hairpin (item 20).

**IMPORTANT:** The cylinder **MUST** be placed at position "E" only when the rotary broom is used or when the equipments are transported in trailers.

9. **(FIGURE 3)** Secure the parking stand extension (item 21) to the subframe parking stand (item 22) using two 3/8"NC x 1 1/4" bolts (item 23), 3/8" lockwashers (item 24) and 3/8"NC hex. nuts (item 25). Tighten bolts to 20 lbs-ft or 27 N-M. Use attaching position "A", "B", or "C" as chosen in the section "IMPORTANT" of paragraph 4, and make sure to position the parking stand extension (item 27) as shown on figure 2a.

**NOTE:** If you use position "A", the parking stand extension (item 21) will not be required.

10. **(FIGURE 4)** Insert the 3/16" x 1 3/4" spring pin (item 1) in the 1/2" x 3" pin (item 2). Insert the compression spring 0.665" dia. int. x 1" (item 4) inside the parking stand mechanism (item 3). Insert the 1/2" x 3" pin (item 2) into the compression spring (item 4) and secure the 1/8" x 1" spring pin (item 5) as indicated on figure 4.



# ASSEMBLY

## Drive Kit Installation L2182 & L2183 (Options) (Figure 5)

**IMPORTANT:** To avoid damage to the drive kit components, do not raise or lower the snowblower while blowing snow. Always make this operation when the snowblower is not blowing.

1. Install the 1/4" NF grease fitting on each of the 1 3/8" flange bearings (item 2) and place the 1 3/8" flange bearings (item 2) as indicated on figure 3, making sure to direct the grease fittings towards the ground. Slide the 1 3/8" output shaft (item 1) inside each flange bearing. Secure using 5/8"NC X 1 3/4" bolts (item 5), 5/8" lockwashers (item 6) and 5/8"NC nylon insert locknuts (item 7). Tighten bolts to 165 lbs-ft or 224 N-M.
2. Position the output shaft so that it exceeds 7" (see fig.5) from the rear cross plate. Apply threadlocker on each bearing allen setscrew, then tighten securely. Lubricate the bearings.

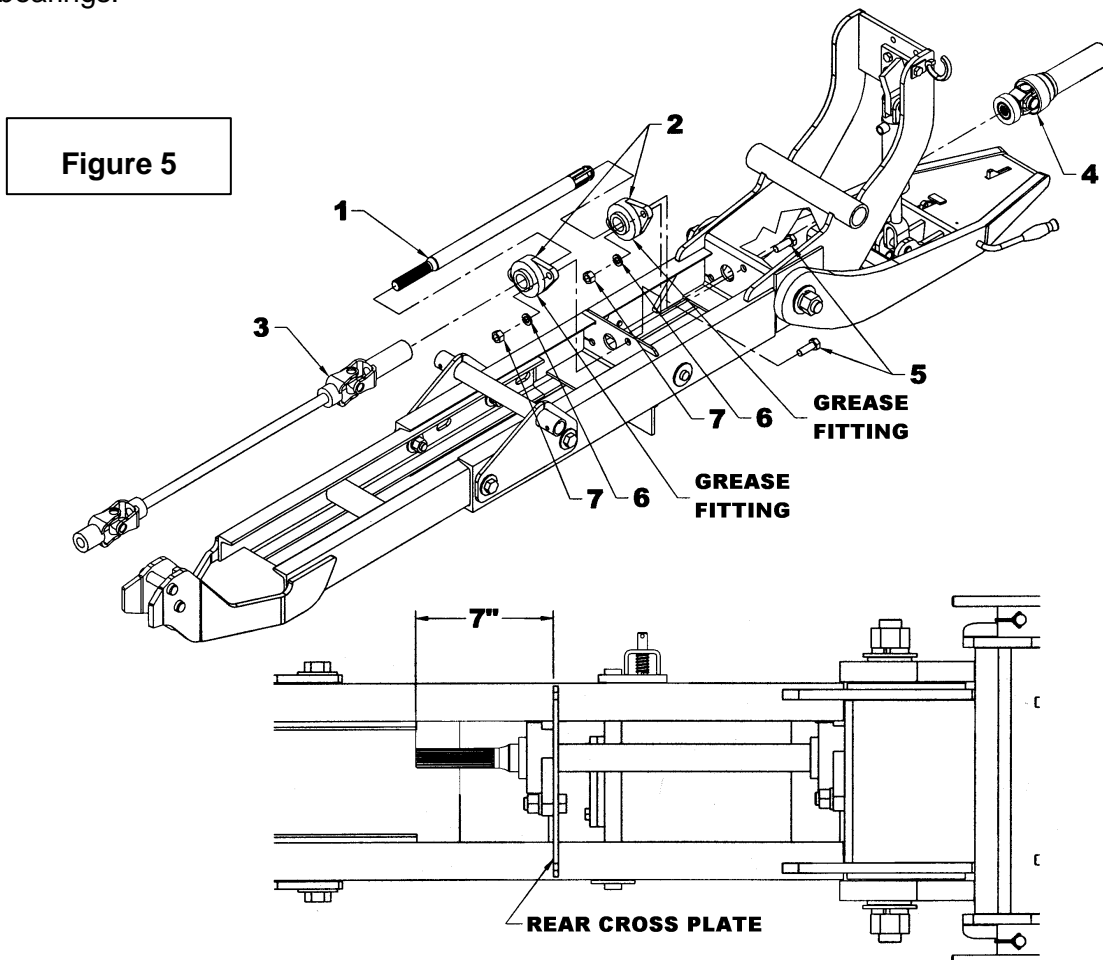
3. After installing the subframe under the tractor, attach the driveline's longest yoke (item 3) to the rear of the output shaft (item 1). Install the driveline quick connect yoke (item 3) on the tractor's mid PTO.
4. The driveline male half (item 4) must be installed when mounting the snowblower or rotary broom, and it is not required when using the blade.



**WARNING:** To avoid serious personal injury: Make sure that the quick coupler is securely locked in place. A "click" must be heard.



**WARNING:** The driveline can be damaged and could cause serious personal injury if the quick hitch is not attached properly.





---

# ASSEMBLY

---

## **Hydraulic Components Installation** (Figures 6a, 6b & 6c, following page)

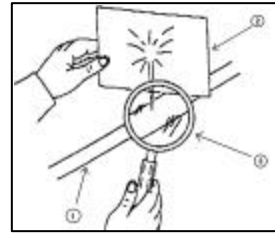
**IMPORTANT:** To avoid hydraulic leaks, use thread sealant where necessary.

1. Install the flow restrictor (item 10) on the cylinder's lower hydraulic port (item 2) at 20°, as shown on figure 6b. The flow restrictor is similar to the elbow (item 3) except that it has a small hole allowing the oil to flow through.
2. Install a 90° elbow (item 3) on the cylinder's upper hydraulic port (item 2) at 20°, as shown on figure 6b.
3. Secure the two 1/4" x 90" lg hoses (item 1) to the elbow (item 3) and the flow restrictor (item 10) already on the cylinder (item 2), see figure 6a.
4. Install the dust plugs (item 4), the blue and red identification rings (items 6-7) and the female quick couplers (item 5) on the second extremity of the 1/4" x 90" hoses (item 1). Place the other two identification rings on the tractor's hydraulic ports (items 8-9), see figure 6a.
5. Install the three hose supports where indicated on figure 6c.



**WARNING:** To avoid serious personal injury: Escaping hydraulic/diesel fluid under pressure can penetrate the skin causing serious injury.

- Do not use your hands to check for leaks. Use a piece of cardboard or paper to search for leaks.

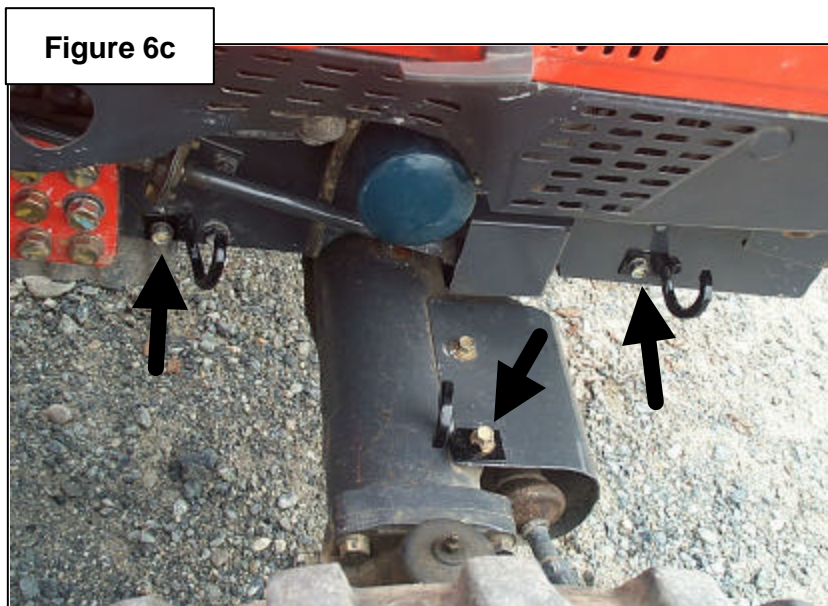
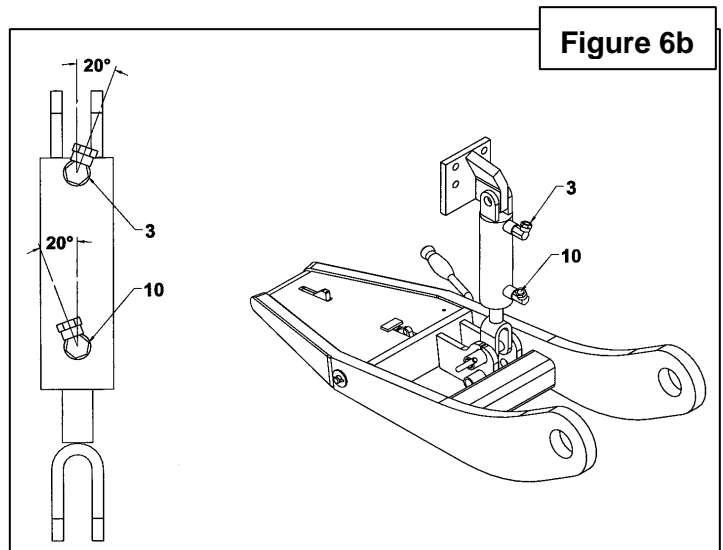
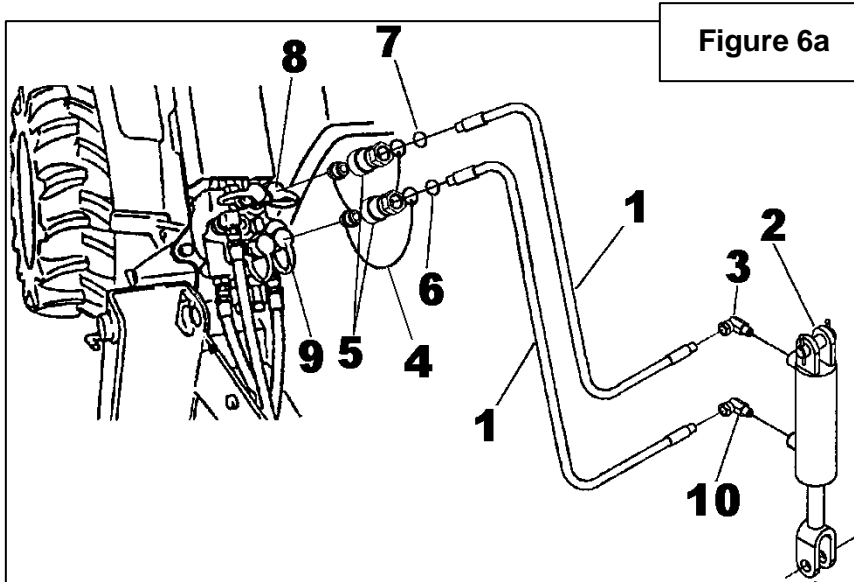


- (1) Hydraulic line
- (2) Cardboard
- (3) Magnifying glass

- Stop engine and relieve pressure before connecting or disconnecting lines.
- Tighten all connections before starting engine or pressurizing lines.

If any fluid is injected into the skin, obtain medical attention immediately or gangrene may result.

# ASSEMBLY



# ASSEMBLY

## Mounting the Subframe under the Tractor

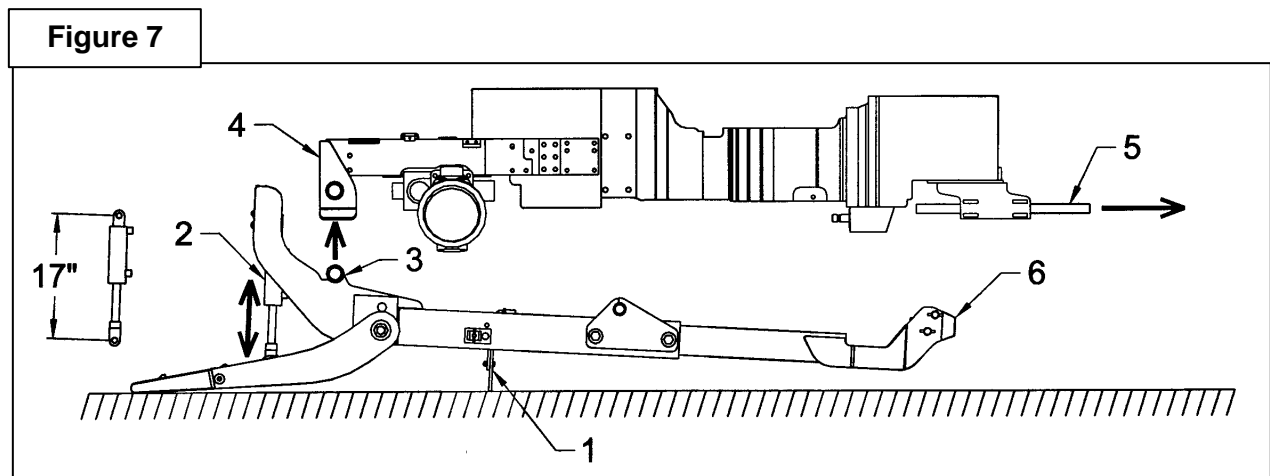
**WARNING:** To avoid serious personal injury: Park the tractor on level ground, place the transmission in neutral, set the parking brake, disengage the PTO, place all control levers in neutral, shut off the engine, remove the ignition key and allow the rotating parts to stop **BEFORE** attaching the subframe underneath the tractor.

### Step 1: (Figure 7)

- Lay the subframe on its parking stand (item 1).
- Make sure the cylinder (item 2) is well extended; the distance between the two cylinder pins should be about 17". If not, sit on the operator's seat, start engine, remove parking stand and drive the tractor beside the subframe. The tractor side where the valve is must be next to the subframe cylinder. Shut off the engine, and connect the hoses' female quick couplers (Fig.6a, item 5) to the male quick couplers on the tractor's hydraulic valve (Fig.6a, items 8-9).

**NOTE:** To facilitate the installation of the hydraulic connectors insallation, place the hydraulic valve lever in floating position.

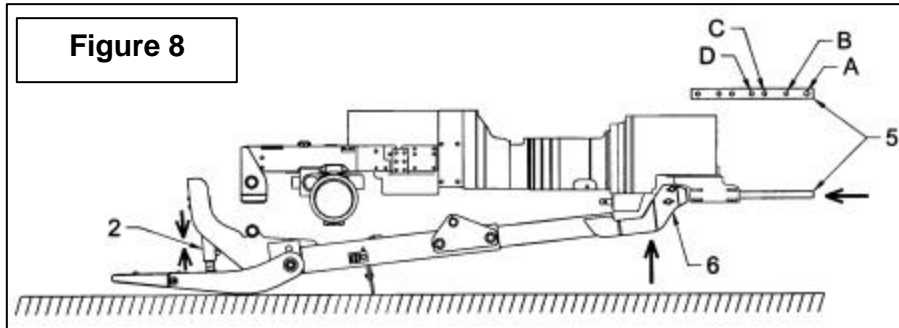
- Sit on the tractor seat, start the engine and, using the hydraulic valve lever, completely extend the cylinder. Shut off the engine and disconnect the hoses.
- Sit on the operator's seat, start engine and slowly drive the tractor over the subframe, while aligning the tube of the front subframe (item 3) and the tubes of the front bracket (item 4). Also align the rear of the subframe (item 6) with the tractor draw bar (item 5). Shut off the engine.
- Connect the quick couplers (Fig. 6a, item 5) to the tractor's hydraulic ports (Fig. 6a, items 8-9), making sure to match colors of the identification rings. The hoses are well connected if the quick hitch lowers when the hydraulic valve lever is pushed forward. If operation is not as described, reverse the hoses on tractor side, as well as the identification rings to match colors.
- Place the hoses (Fig.6a, item 1) in the hose supports shown on figure 6c and install nylon tie wraps to secure the hoses together.
- Remove the draw bar (item 5) from the tractor.



# ASSEMBLY

## Step 2: (Figure 8)

- Sit on the operator's seat, start the engine and slowly compress the cylinder (item 2) using the hydraulic valve lever. This operation will raise the subframe (item 6).
- Make sure that the rear of the subframe (item 6) is well aligned with the tractor draw bar (item 5) and shut off the engine. Insert the draw bar between the two pins on the rear subframe (item 6) and secure the draw bar (item 5) to the tractor in position "D".



## Step 3: (Figure 9a & 9b)

- Using a lever arm (not included), raise the male quick hitch nose and insert a 3" thick wood block (item 7, not included) under the quick hitch nose.
- Sit on the operator's seat, start the engine and slowly extend the cylinder (item 2) using the hydraulic valve lever, until the front subframe tube (item 3) is pressed against the inside of the front bracket (item 4) bent plate. The front bracket tubes (items 4) will then be aligned with the front subframe tube (item 3). Shut off the engine and insert the two 1 3/4" "T" pins (Fig.9b, item 1) in the front bracket (Fig.9b, item 3) and secure with the two 3/8" x 2 1/2" pipe pins (Fig.9b, item 2).

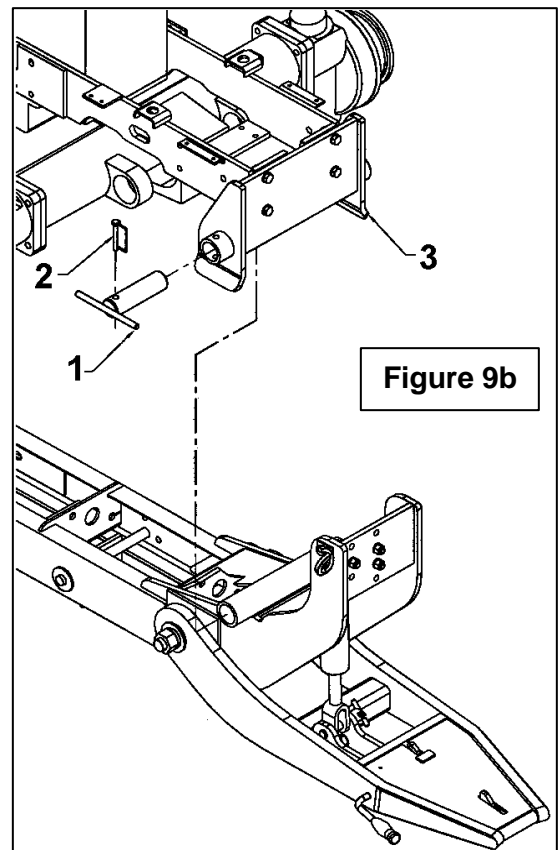
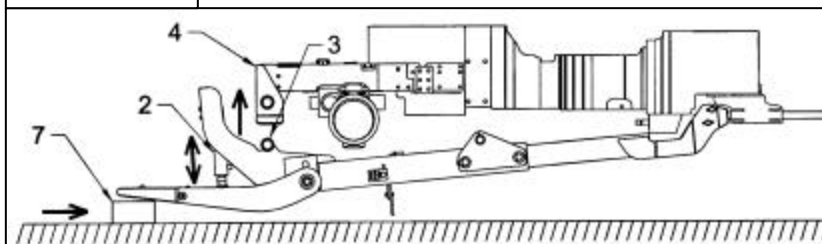


Figure 9a



# ASSEMBLY

## Étape 4: (Figure 10a)

- **If you do not own the front loader,** Place the mid support installation plates (item 1), the spacer (item 2) and the valve support (item 6) as shown on figure 10a and attach to each side of the tractor using M16 x 1.5 x 55mm lg hex. bolts (item 3), 16mm lockwashers (item 4) and Ø 11/16" int. flatwashers (item 5). For now do not tighten the M16 x 1.5 x 55mm lg hex bolts (item 3).
- **If you own the front loader,** Place the mid support installation plates (item 1) as shown on figure 10b and attach to each side of the tractor using M16 x 1.5 x 55mm lg hex. bolts (item 2), 16mm lockwashers (item 3) and Ø 11/16" int. flatwashers (item 4). For now do not tighten the M16 x 1.5 x 55mm lg hex bolts (item 2).

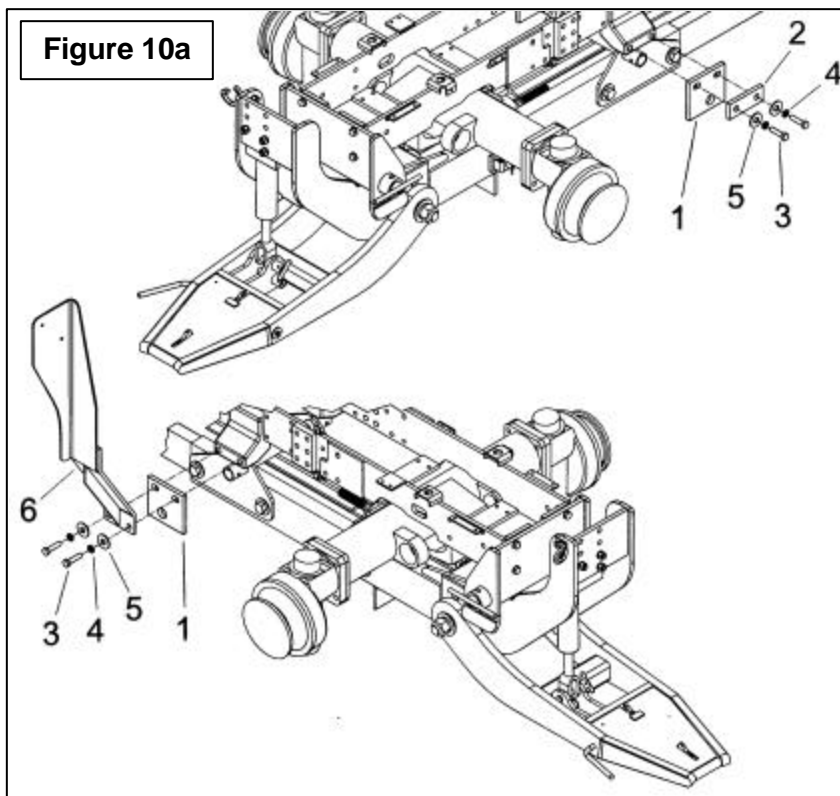


Figure 10a

**NOTE:** Position the round hole of the installation plates (Fig. 10a and 10b, item 1) towards the rear of the tractor.

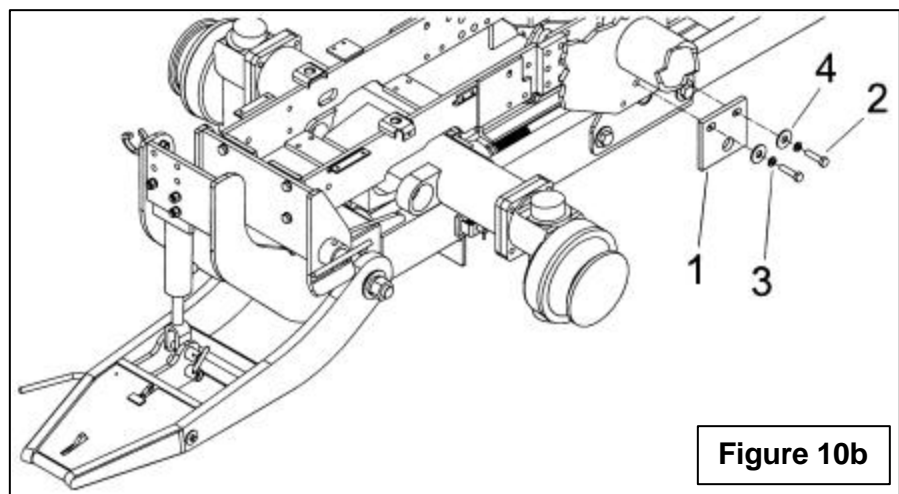


Figure 10b

# ASSEMBLY

## Étape 5: (Figure 11)

- Insert a  $\varnothing 5/16$ " x 3" lg pin (item 1) in the hole located at the end of each  $\varnothing 1 1/4$ " x 5 3/4" lg pin (item 2).
- Then insert the  $\varnothing 1 1/4$ " x 5 3/4" lg pins (item 2) in the hole of each mid support installation plates (item 3) and in the mid support tube (item 5) and fasten with the two 1/4" round lock pins (item 4).

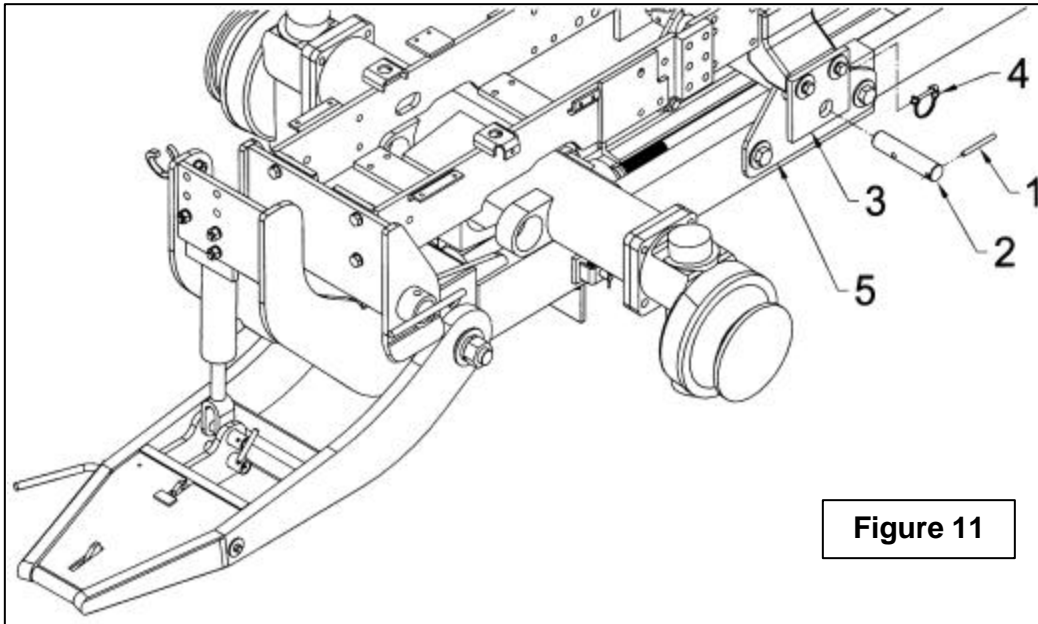


Figure 11

## Étape 6: (Figure 12)

- Sit on the operator's seat, start the engine and compress the cylinder (item 2) using the hydraulic valve lever. Shut off the engine and remove the wood block (item 7).
- Move the rear subframe (item 8) until the plate (item 10) is perfectly pressed against the tractor draw bar (item 5).
- Adjust and tighten securely the four 3/4"NC x 2 3/4" bolts (item 9) to 297 lbs-ft or 403 N-M and the four M16 x 1.5 x 55mm (item 11) to 130 lbs-ft or 176 N-M.
- Lastly, pull on the subframe's parking stand pin (Fig. 3, item 26) and push the parking stand (item 1) towards the front until the pin lodges into the second hole.

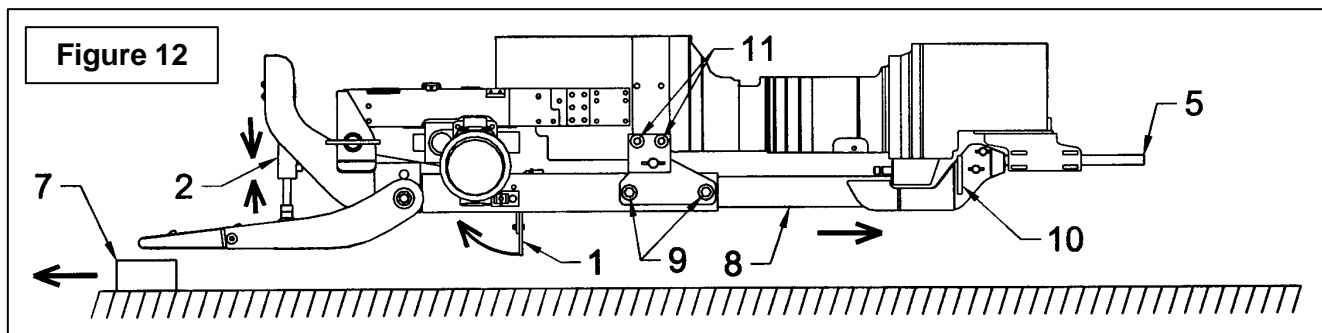


Figure 12

---

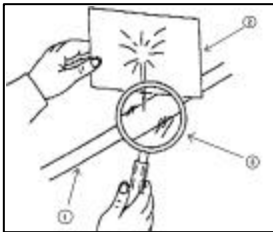
# ASSEMBLY

---



**WARNING:** To avoid serious personal injury: Escaping hydraulic/diesel fluid under pressure can penetrate the skin causing serious injury.

- Do not use your hands to check for leaks. Use a piece of cardboard or paper to search for leaks.



- (1) Hydraulic line
- (2) Cardboard
- (3) Magnifying glass

- Stop engine and relieve pressure before connecting or disconnecting lines.
- Tighten all connections before starting engine or pressurizing lines.

If any fluid is injected into the skin, obtain medical attention immediately or gangrene may result.

# ASSEMBLY

## Removing the Subframe from the Tractor

**⚠️ WARNING:** To avoid serious personal injury: Park the tractor on level ground, place the transmission in neutral, set the parking brake, disengage the PTO, place all control levers in neutral, shut off the engine, remove the ignition key and allow the rotating parts to stop **BEFORE** removing the subframe from underneath the tractor.

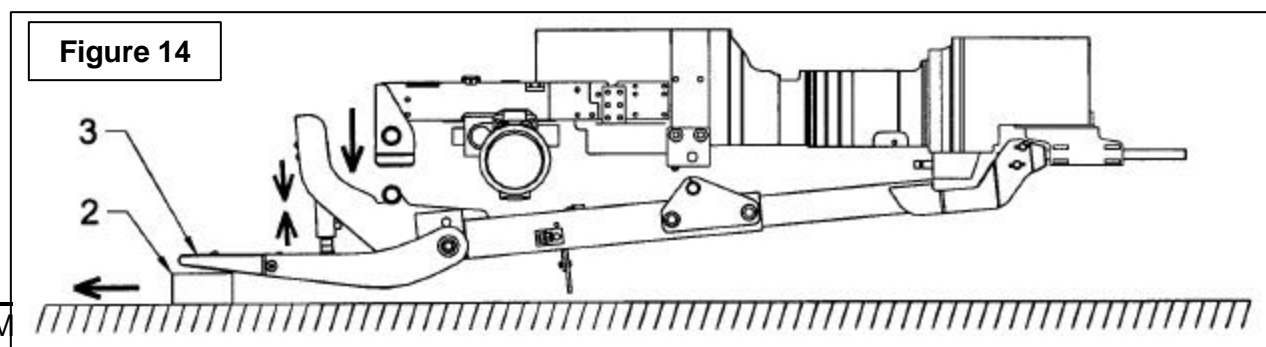
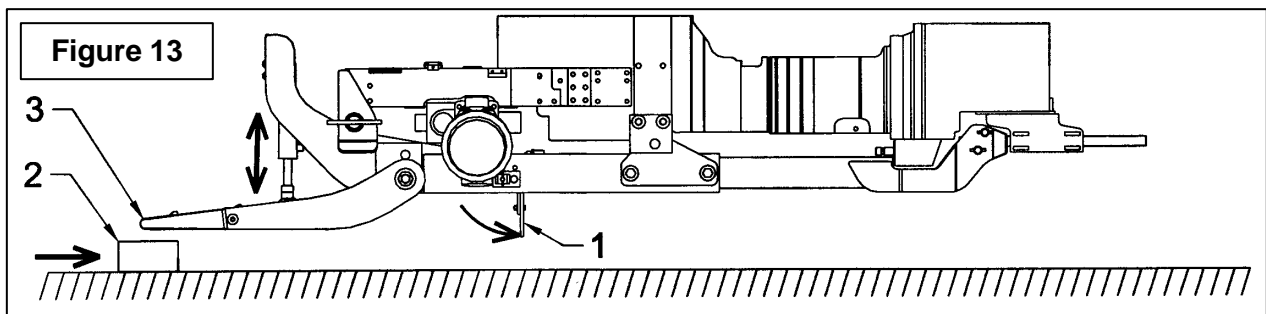
### Step 1: (Figure 13)

- Remove the equipment (blade, rotary broom or snowblower) from the subframe and remove the drivelines if applicable.
- Remove the two 1/4" round lock pins (fig. 11, item 4) and the two  $\varnothing 1\ 1/4"$  x  $5\ 3/4"$  pins (fig. 11, item 2).
- Sit on the tractor seat and start the engine. Raise the male quick hitch using the tractor's hydraulic valve lever. Shut off the engine and insert a 3" thick wood block (item 2, not included) under the nose of the male quick hitch (item 3).

- Sit on the tractor seat and start the engine. Using the hydraulic valve lever, slowly lower the male quick hitch to the ground in order to slightly raise the front wheels. Shut off the engine.
- Set the parking stand (item 1).
- Remove the two 3/8" x 2 1/2" pipe pins (Fig.9b, item 2) and two 1 3/4" "T" pins (Fig.9b, item 1).

### Step 2: (Figure 14)

- Sit on the tractor seat and relieve hydraulic pressure using the hydraulic valve lever. This operation will lower the front of the subframe to the ground (refer to figure 14).
- Remove the 3" thick wood block (item 2) from under the nose of the male quick hitch (item 3).





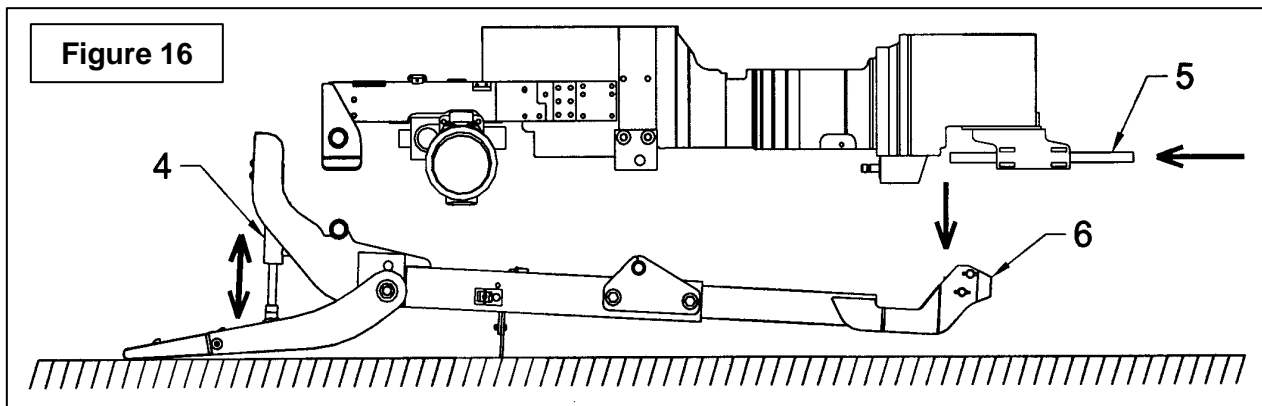
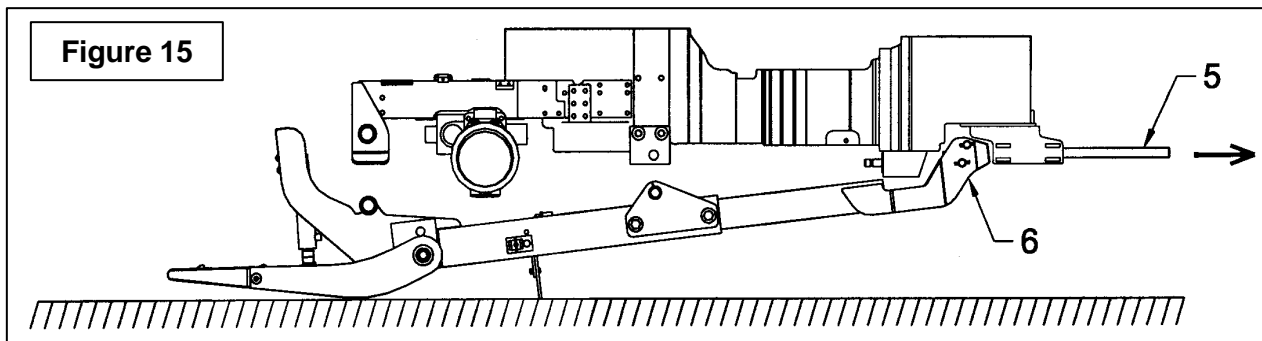
# ASSEMBLY

## Step 3: (Figure 15)

- Remove the draw bar (item 5) from the tractor in order to free the rear subframe (item 6).

## Step 4: (Figure 6)

- Sit on the tractor seat and start the engine. Using the hydraulic valve lever, lower the male quick hitch to the ground until the cylinder (item 4) is completely extended. This operation will lower the rear subframe (item 6). Shut off the engine.
- Reinstall the tractor draw bar (item 5). Disconnect the two hoses from the tractor's hydraulic valve ports. Remove the two hoses from the three hose supports located on the tractor (see figure 6c). Reinstall the dust caps and plugs on the hydraulic connectors of the hoses and the tractor valve.
- Make sure the subframe components do not interfere with the tractor before backing away from the subframe. Sit on the tractor seat, start the engine and remove the parking brake. Back the tractor away slowly until the subframe is cleared.



# MAINTENANCE

## SUBFRAME MAINTENANCE

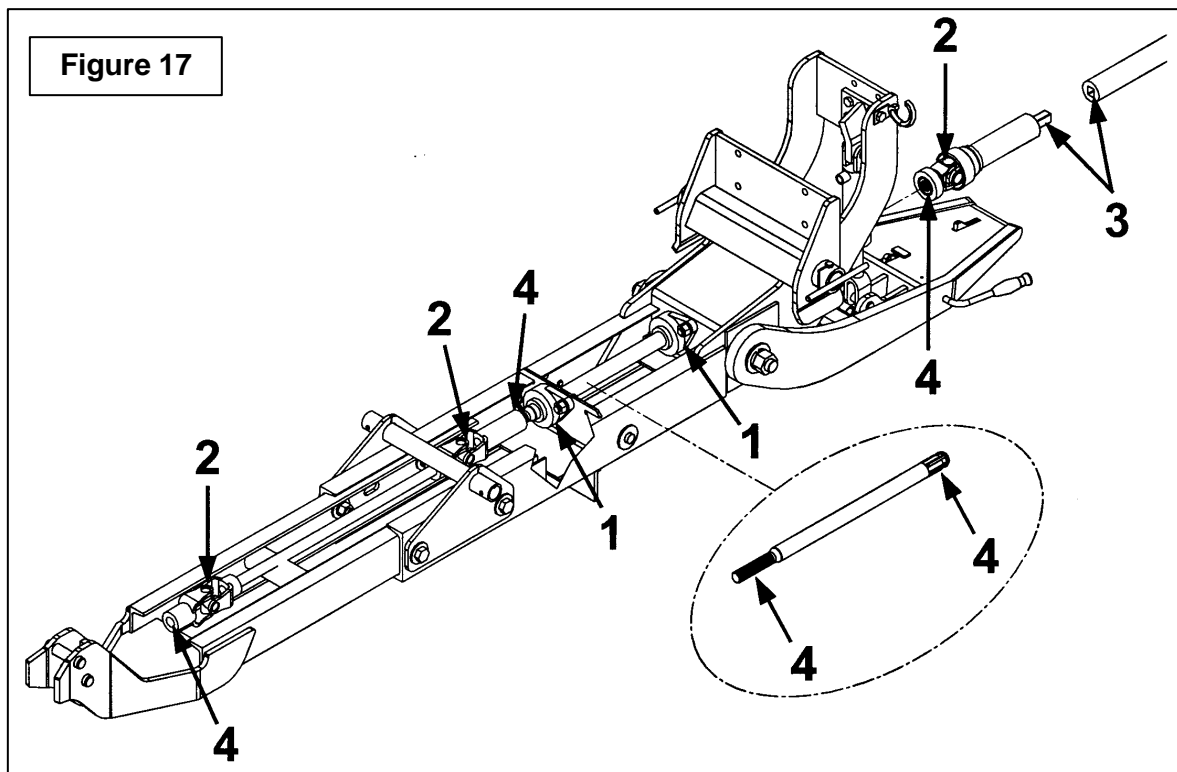
1. After the first 8 hours of operation, retighten all nuts and bolts on the subframe according to the torque specification table. Then, make this verification every 40 hours of operation.
2. Every 20 hours of operation, lubricate the two pivot bushings (Fig. 3, item 1) with oil having a viscosity index SAE of 10 minimum (example: 10W30).

## MAINTENANCE OF THE L2182 & L2183 DRIVE KITS (OPTIONS)

(Figure 17)

1. Grease the flange bearings every 20 hours of operation (item 1).
2. Grease the universal joints on drivelines every 40 hours of operation (item 2).
3. Clean and grease the sliding junctions of the male and female driveline every 40 hours of operation (item 3).
4. Clean and grease the output shaft extremities and all quick connect yokes on the drivelines after each 40 hours of operation.

**IMPORTANT:** In case you use the subframe and drive kit less than 20 hours every year, perform step 2 of the *Subframe Maintenance* section and steps 1 to 4 in *Maintenance of the Drive Kits* section, at least once a year, and before storage.



---

# PARTS

---

## INTRODUCTION

All parts are illustrated in "exploded views" which show the individual parts in their normal relationship to each other. Reference numbers are used in the illustrations. These numbers correspond to those in the "Reference Number" (REF) column, and are followed by the description and quantity required.

O/L - "Obtain Locally" in the part number column indicates common hardware that is available at your local hardware supply.

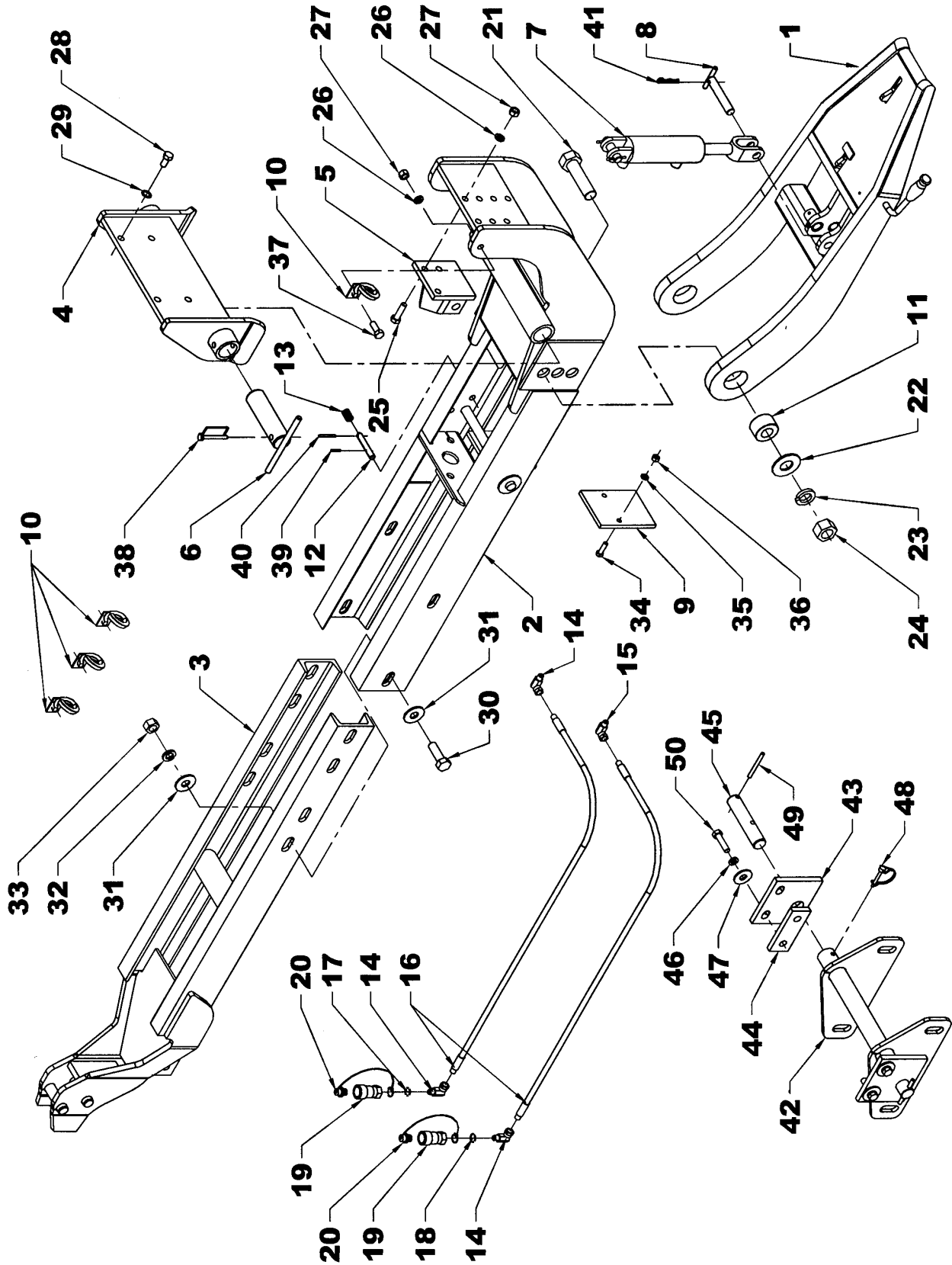
All reference to right and left, forward or rearward, are from the operator seat, looking at the machine while operating.

Orders must give the complete description, correct part number, the total amount required, the serial number, the method of shipment and the shipping address.

The manufacturer reserves the rights to change, modify, or eliminate from time to time, for technical or other reasons, certain or all data, specifications, or the product or products themselves, without any liability or obligation.

# PARTS

## MALE QUICK HITCH AND SUBFRAME - L2180



# PARTS

## MALE QUICK HITCH AND SUBFRAME – L2180

REF.	DESCRIPTION	QTY	PART #	CODE
1	Male quick hitch ass'y	1	70000-02721	666441
2	Front subframe	1	70000-02719	666436
3	Rear subframe	1	70000-02718	666424
4	Subframe bracket	1	70000-02723	666444
5	Cylinder support	1	70000-02724	666455
6	"T" pin Ø1 3/4"	2	70000-02725	666456
7	Cylinder Ø2" x 5" & pins	1	70000-02740	3900029
	Pin 3/4" x 2 1/2"		70001-00795	665235
	Cotter pin 3/16" x 1 1/4"	1	O/L	O/L
	Seal kit	1	70001-00872	665434
8	"T" pin Ø3/4"	1	70000-02726	666457
9	Parking stand extension	1	70000-02728	666459
10	Hose support	4	70060-01609	658489
11	Pivot bushing	2	70000-02727	666458
12	Pin Ø1/2" x 3"	1	70000-02729	666460
13	Compression spring	1	70000-02717	657658
14	Elbow 90°, 3/8 NPT	1	70060-70380	655314
15	Flow restrictor 0.063"	1	70000-02741	3900112
16	Hose 1/4" x 90", 3/8 NPT	2	70060-01746	659011
17	Blue identification ring	2	70060-01727	658205
18	Red identification ring	2	70060-01726	658204
19	Quick coupler 3/8 NPT	2	70060-02659	2600070
20	Dust plug	2	70060-02660	2600071
21	Bolt hex. 1 1/8" NC x 4" lg., gr.5, PTD	2	O/L	O/L
22	Flatwasher Ø1 1/4", PTD	2	O/L	O/L
23	Lockwasher 1 1/8", PTD	2	O/L	O/L
24	Nylon insert locknut 1 1/8" NC, PTD	2	O/L	O/L
25	Bolt hex. 1/2" NC x 1 3/4" lg., gr.5, PTD	3	O/L	O/L
26	Lockwasher 1/2", PTD	4	O/L	O/L
27	Nylon insert locknut 1/2" NC, PTD	4	O/L	O/L
28	Bolt hex. M14 x 1.5 x 40mm lg., gr.8.8, PTD	4	70060-70433	0200040
29	Int. teeth lockwasher 14mm, PTD	4	70060-70432	1300006
30	Bolt hex. 3/4" NC x 2 1/4" lg., gr.5, PTD	4	O/L	O/L
31	Flatwasher Ø13/16", PTD	8	O/L	O/L
32	Lockwasher 3/4", PTD	4	O/L	O/L
33	Nylon insert locknut 3/4" NC, PTD	4	O/L	O/L
34	Bolt hex. 3/8" NC x 1 1/4" lg., gr.5, PTD	2	O/L	O/L
35	Lockwasher 3/8", PTD	2	O/L	O/L
36	Nut hex. 3/8" NC, PTD	2	O/L	O/L
37	Bolt hex. 1/2" NC x 1 1/4" lg., gr.5, PTD	1	O/L	O/L

---

# PARTS

---

## MALE QUICK HITCH AND SUBFRAME – L2180

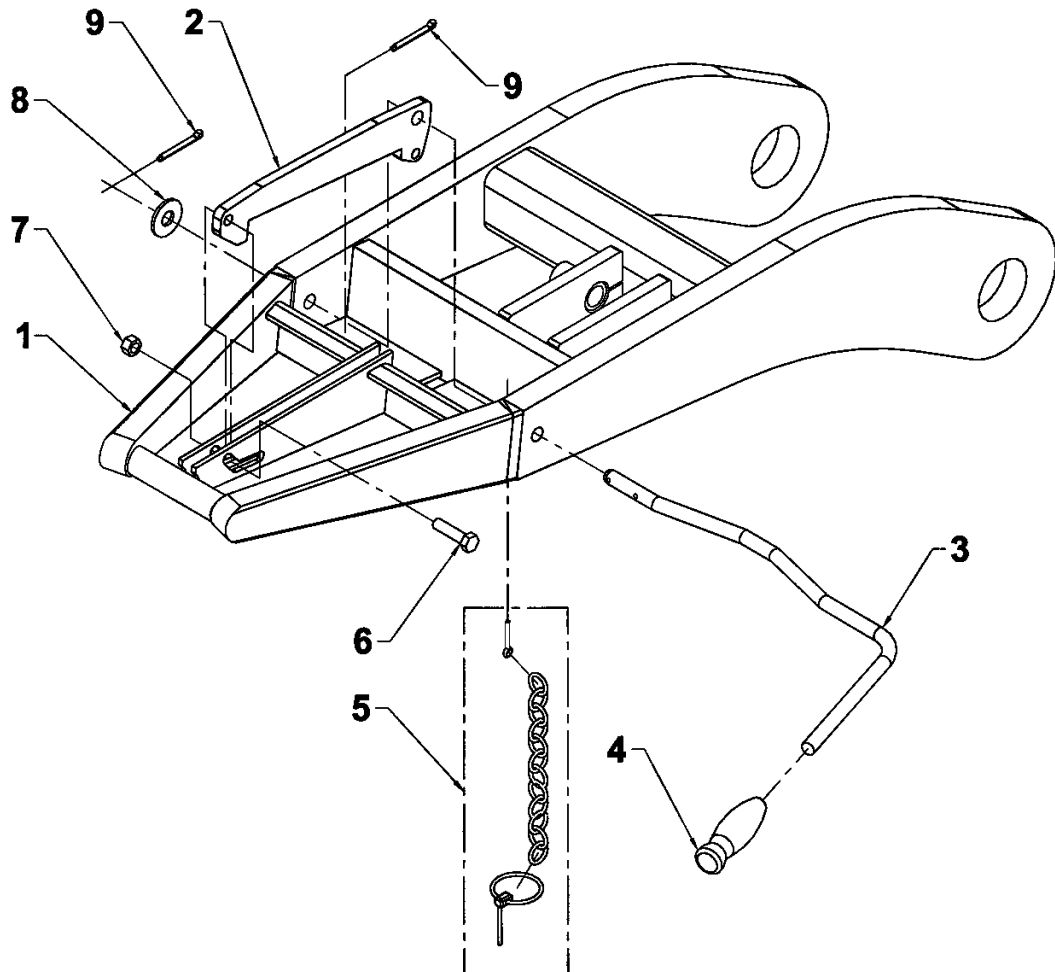
REF.	DESCRIPTION	QTY	PART #	CODE
38	Pipe pin 3/8" x 2 1/2", PTD	2	70060-70431	1900008
39	Spring pin Ø1/8" x 1" lg.	1	O/L	O/L
40	Spring pin Ø3/16" x 1 3/4" lg.	1	O/L	O/L
41	Hairpin Ø 1/8" x 2 9/16" lg. PTD	1	70060-00000	1800004
42	Support intermédiaire	1	70060-01922	666745
43	Installation plate for mid support	2	70060-01923	666746
44	Spacer for mid support	1	70060-01924	666747
45	Pin Ø1 1/4" x 5 3/4" lg. PTD	2	70060-01931	4600016
46	Lockwasher 16mm, PTD	4	70060-70434	1200021
47	Flatwasher Ø11/16" int. PTD	4	O/L	O/L
48	Lock pins 1/4" round PTD	2	70060-01929	1900006
49	Spring pin Ø5/16" x 3"	2	O/L	O/L
50	Bolt hex. M16 x 1.5 x 55mm lg. PTD	4	70060-01935	0200108

---

# PARTS

## MALE QUICK HITCH (70000-02721)

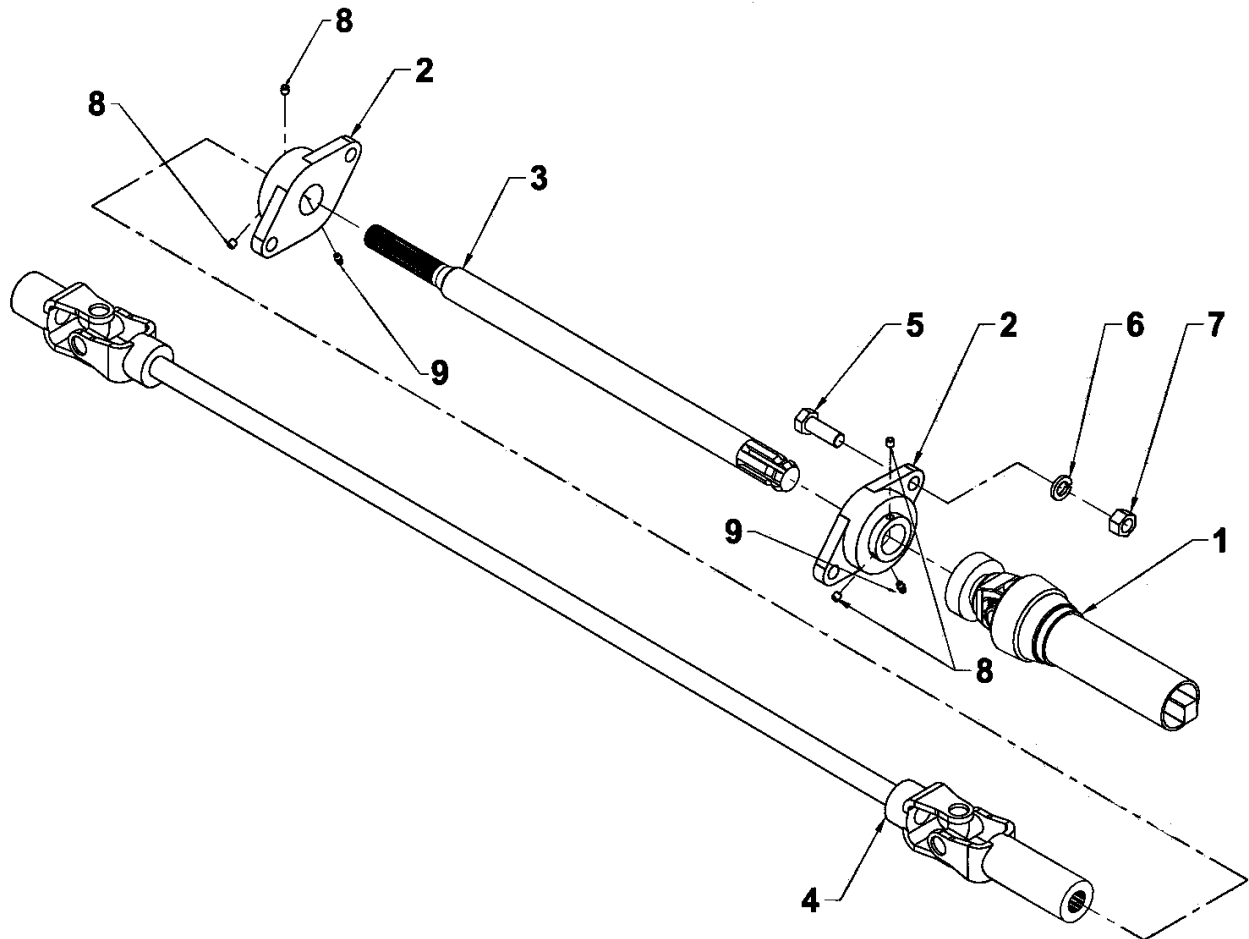
Ref.	Description	Qty	Part #	Code
1	Male quick hitch	1	70000-02720	666439
2	Quick hitch latch	1	70060-01773	658980
3	Engagement lever	1	70000-02722	666442
4	Plastic handle	1	70060-01318	656797
5	Safety chain	1	70060-01611	657632
6	Bolt hex. 3/8" NC x 1 1/2" gr.5, PTD	1	O/L	O/L
7	Nylon insert locknut 3/8" NC, PTD	1	O/L	O/L
8	Flatwasher 9/16" PTD	1	O/L	O/L
9	Cotter pin 1/8" x 1", PTD	2	O/L	O/L



# PARTS

## DRIVE KIT – L2182 (OPTION)

Ref.	Description	Qty	Part #	Code
1	Male half driveline	1	70000-02745	4700020
2	Ball bearing 1 3/8"	2	70000-02742	4300019
3	Output shaft 1 3/8" x 24 5/8"	1	70000-02744	4700019
4	Fixed driveline	1	70001-00623	664851
5	Bolt hex. 5/8" NC x 1 3/4" PTD	4	O/L	O/L
6	Lockwasher 5/8" PTD	4	O/L	O/L
7	Nylon insert locknut 5/8" NC PQÉ	4	O/L	O/L
8	Setscrew 5/16"NC x 5/16"	4	O/L	O/L
9	Grease fitting 1/4" NF	2	O/L	O/L





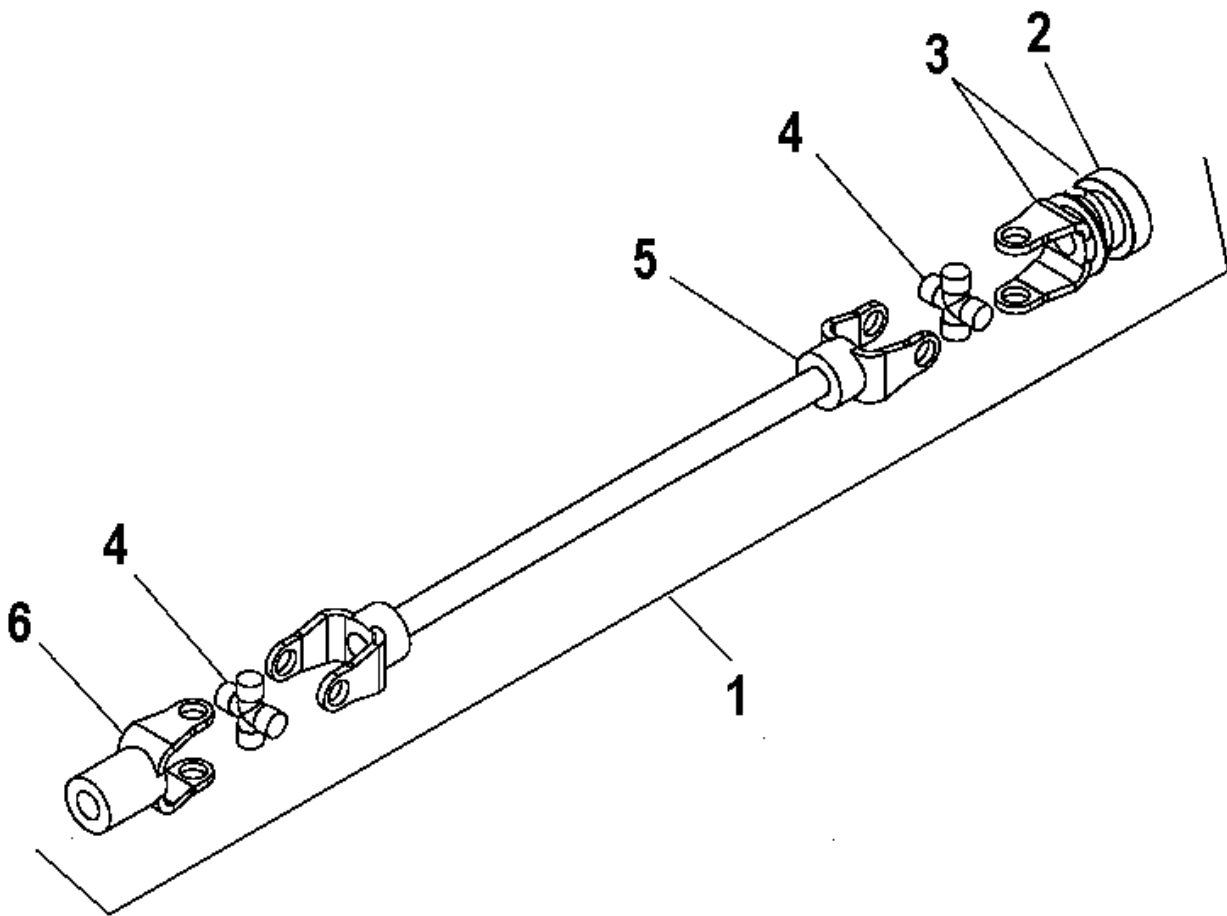
---

# PARTS

---

## DRIVELINE – 70001-00623

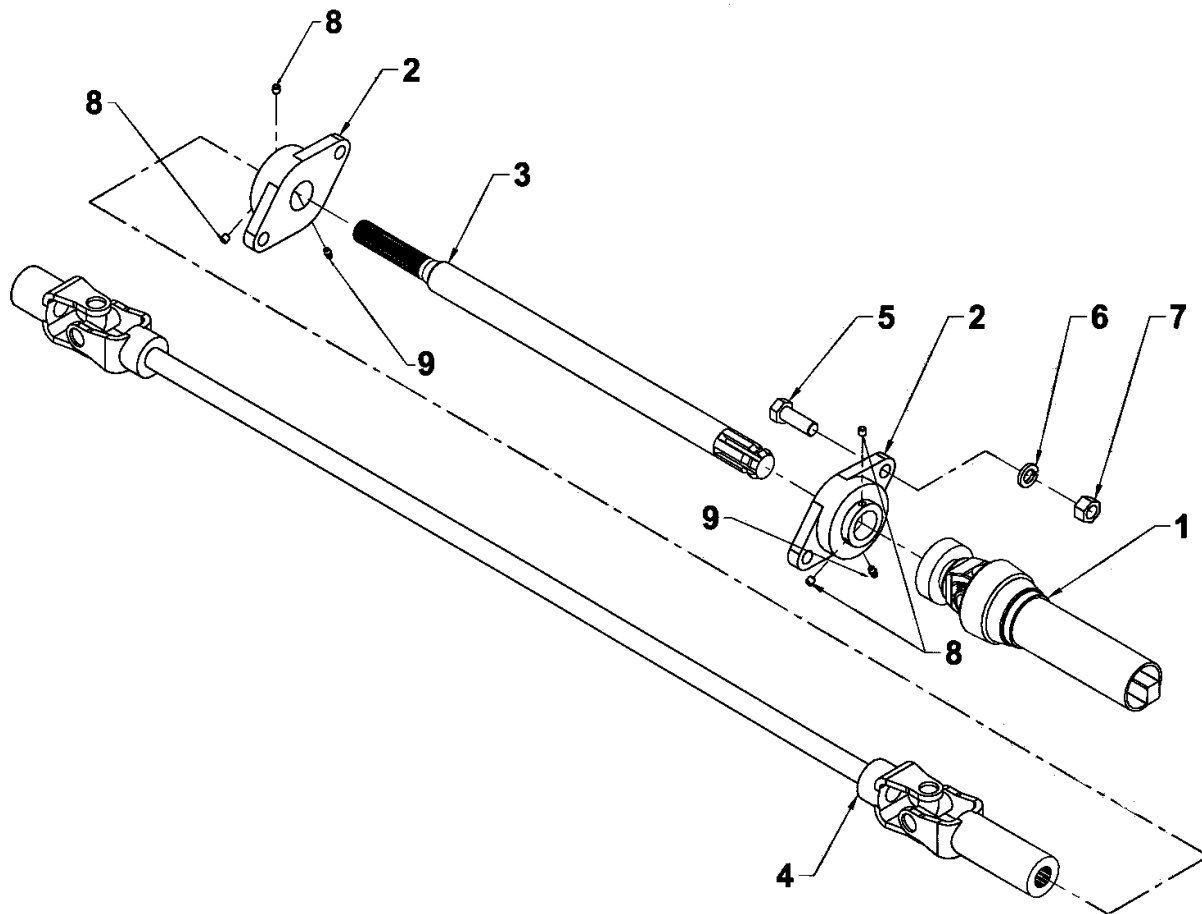
REF.	Description	QTY.	PART #	CODE
1	Fixed driveline	1	70001-00623	664851
2	Yoke repair kit	1	70060-01478	658113
3	Quick connect yoke ass'y	1	70060-01482	658425
4	Universal joint kit	2	70060-01020	654478
5	Yoke and shaft ass'y	1	70060-01147	656491
6	Yoke for splined shaft	1	70060-01148	656492



# PARTS

## DRIVE KIT – L2183 (OPTION)

Ref.	Description	Qty	Part #	Code
1	Male half driveline	1	70000-02745	4700020
2	Ball bearing 1 3/8"	2	70000-02742	4300019
3	Output shaft 1 3/8" x 24 5/8"	1	70000-02744	4700019
4	Fixed driveline	1	70001-00755	664852
5	Bolt hex. 5/8" NC x 1 3/4" PTD	4	O/L	O/L
6	Lockwasher 5/8" PTD	4	O/L	O/L
7	Nylon insert locknut 5/8" NC PTD	4	O/L	O/L
8	Setscrew 5/16"NC x 5/16"	4	O/L	O/L
9	Grease fitting 1/4" NF	2	O/L	O/L



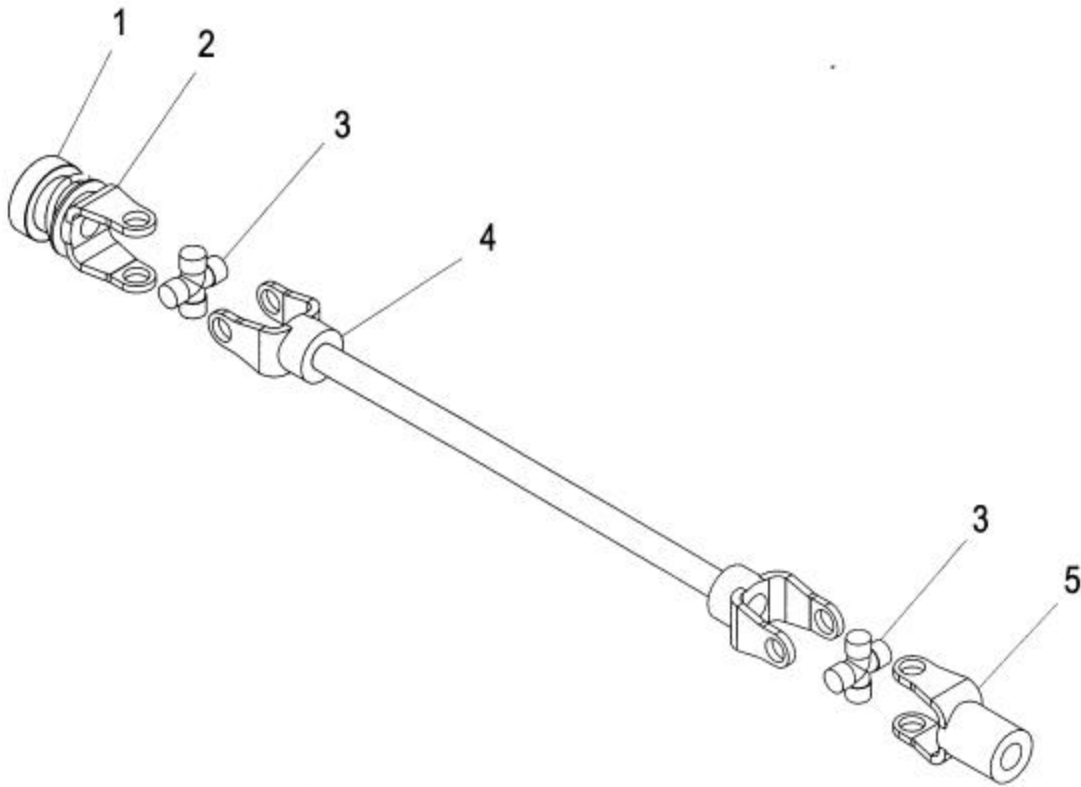
---

# PARTS

---

## DRIVELINE – 70001-00755

REF.	DESCRIPTION	QTY.	PART #	CODE
1	Spring lock repair kit	1	70060-01478	658113
2	Spring lock yoke assembly	1	70060-01482	658425
3	Cross & bearing kit	2	70060-01020	654478
4	Fixed length double center	1	70001-00805	665238
5	Yoke	1	70060-01148	656492



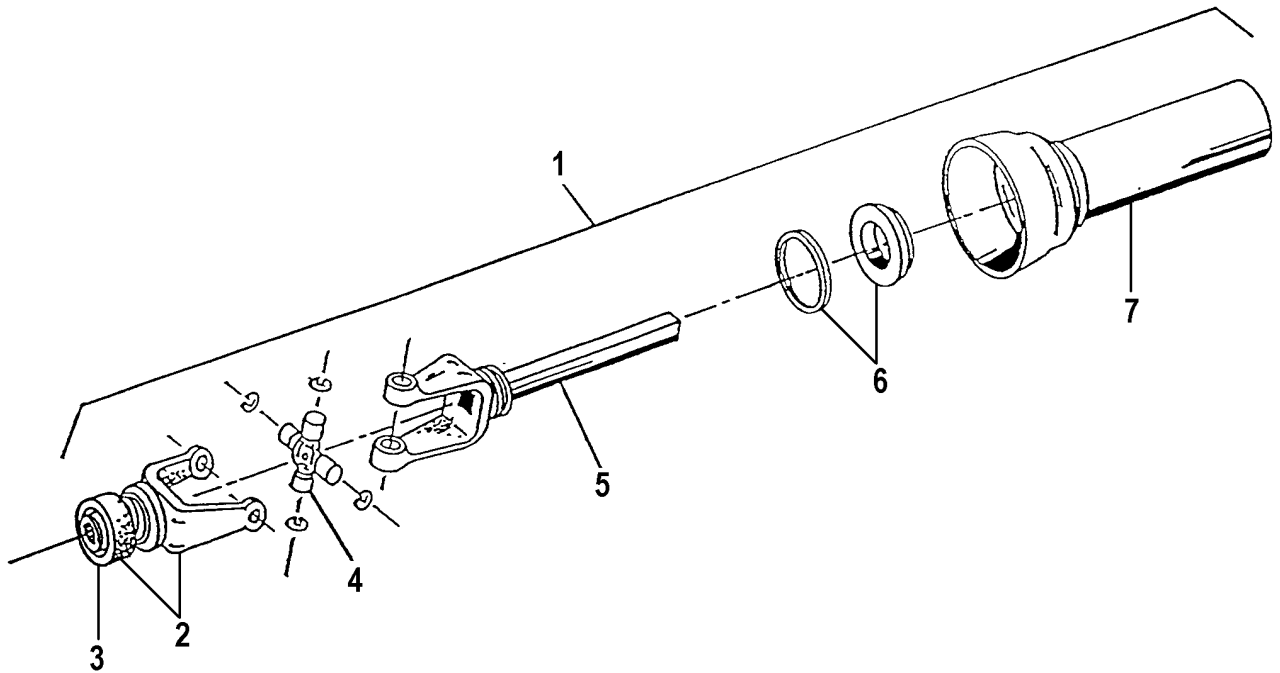
---

# PARTS

---

## DRIVELINE – MALE HALF (70000-02745)

REF.	DESCRIPTION	QTY	PART #	CODE
1	Driveline ass'y – male part	1	70000-02745	4700020
2	Quick disconnect yoke ass'y	1	70000-02747	4700022
3	Yoke repair kit	1	70000-02746	4700021
4	Universal joint	1	70060-01020	654478
5	Yoke and male shaft ass'y	1	70000-02748	4700023
6	Nylon repair kit	1	70060-04238	661555
7	Outer shield	1	70000-02749	4700024



# TORQUE SPECIFICATION TABLE

## GENERAL SPECIFICATION TABLE

Use the following torques when special torques are not given Note: These values apply to fasteners as received from supplier, when dry. These values do not apply if lubricants are used.

BOLT SIZES (SAE)	TORQUE	
INCHES	Pounds-Foot	Newtons-Meter
1/4	5	7
5/16	10	14
3/8	20	27
7/16	25	41
1/2	88	119
9/16	121	164
5/8	165	224
3/4	297	403
7/8	440	597
1	638	865
1 1/8	840	1139
1 1/4	1180	1600
1 3/8	1570	2129
1 1/2	2070	2807

BOLT SIZES (METRIC)	TORQUE	
MILLIMETERS	Pounds-Foot	Newtons-Meter
M6	10	13
M8	22	30
M10	40	54
M12	59	80
M14	93	126
M16	130	176
M18	168	228
M20	205	278





**Printed in Canada**