



daedong
대동공업

Daedong Kioti Engine Series



- 1. General Introduction**
- 2. Line up summary**
- 3. 3C Series Engine Specifications**
- 4. 3A Series Engine Specifications**
- 5. 4A Series Engine Specifications**
- 6. 4A Turbo Series Engine Specifications**
- 7. B Series Engine Specifications**
- 8. F Series Engine Specifications**
- 9. Emission Certification**
- 10. Endurance Performance**
- 11. Variable Applications**

Daedong Engines have...

- ✓ Powerful Experiences from 1983 year
- ✓ Emission Compliance for EPA, EEC, MLIT
- ✓ Abundant Power Variants
- ✓ Various Applications
- ✓ Over 33,000 Production Capacity
- ✓ State-Of-The-Art Facilities
- ✓ Emphasis on Quality



2. Line-up Summary



daedong

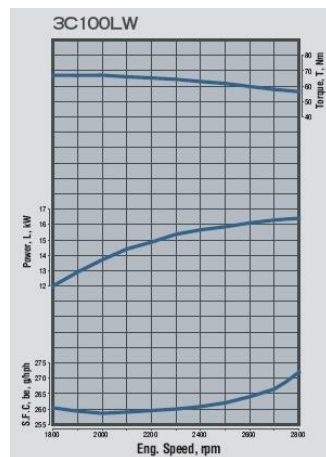


Series	Engine			Emission	Industrial engine	Agriculture engine	Genset Engine		Marine, etc.
	Model	Disp(L)	Code				60Hz	50Hz	
C	3C100	1.0	LW	Tier3	22hp	22hp, 24hp	13hp, 22hp	22hp	22hp, 24hp
			LF	Tier4	22hp, 24hp	22hp, 24hp	13hp, 22hp	22hp	22hp, 24hp
A	3A139	1.39	LW	Tier3	28hp	28hp	-	-	28hp
			LF	Tier4	24hp	24hp	-	-	-
	3A165	1.65	LW	Tier3	34hp	34hp	24hp	20hp	34hp
			LF	Tier4	-	-	24hp	20hp	-
	4A220	2.2	LW	Tier3	45hp	45hp	32hp	24hp	45hp
			LF	Tier4	-	-	-	-	-
	4A220T		LW	Tier3	54hp	54hp	-	-	54hp
B	3B183	1.8	LW	Tier3	38hp	38hp	-	-	38hp
	4B243	2.4	LW	Tier3	49hp	49hp	-	-	49hp
	4B243T		LW	Tier3	59hp	59hp	40hp	34hp	59hp
F	3F183	1.8	TCM4	Tier4	38hp	38hp	-	-	38hp
	3F183T		TCM4	Tier4	55hp, 50hp	55hp, 50hp	34hp	-	55hp, 50hp
			HHI	Tier4	49hp	-	-	-	-
	4F243T	2.4	TCM4	Tier4	73hp, 66hp, 60hp	73hp, 66hp, 60hp	45hp	38hp	73hp, 66hp, 60hp
			TCM3	Tier3	85hp	85hp	-	-	-

3. 3C Series Engine Specifications



daedong



3C100 Full Load Data



ITEM	CONTENTS			
Engine Model	3C100LW	3C100LF	3C100LFG	3C100LWG
Application	Industrial, Agricultural		Generator	Generator
Type	Vertical Water Cooled			
Aspiration	Natural			
Cylinder	3			
Bore (mm) x Stroke (mm)	75 x 76			
Displacement (cc)	1,007			
Rated Power (hp/rpm)	22/2800	24/3000 22/3000	60Hz : 22/3600 13/1800 50Hz : 22/3000	60Hz : 22/3600 13/1800 50Hz : 22/3000
Max Torque (Kgf.m/rpm)	6.5/1900	6.5/2300	-	-
Max Speed (rpm)	3000	3200	Rated rpm (isochronous)	3780
Control Device	Mech-gov.	Electronic-governor		Mech-gov.
Emission Compliance	Tier4 interim	Tier4 Final		Tier4 interim

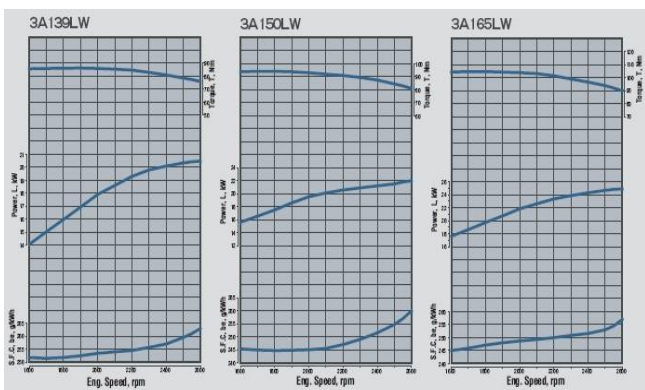
4. 3A Series Engine Specifications



daedong



ITEM	CONTENTS					
Engine Model	3A139LF	3A139LW	3A150LW	3A165LW	3A165LFG	3A165LWG
Application	Industrial, Agricultural				Generator	
Type	Vertical Water Cooled					
Aspiration	Natural					
Cylinder	3					
Bore (mm) x Stroke (mm)	80 x 92.4		83 x 92.4	87 x 92.4		
Displacement (cc)	1,393		1,500	1,647		
Rated Power (hp/rpm)	24/2600	28/2600	30/2600	34/2600	60Hz : 24/1800 50Hz : 20/1500	
Max Torque (Kgf.m/rpm)	5.9/1900	8.8/1700	9.6/1700	10.9/1700	-	
Max Speed (rpm)	2800	2800	2800	2800	Rated rpm (isochronous)	
Control Device	Electronic-governor	Mechanical-governor			Electronic-governor	
Emission Compliance	Tier4 .final	Tier4 Interim/Stage IIIA			Tier4 .final	Tier4 .interim



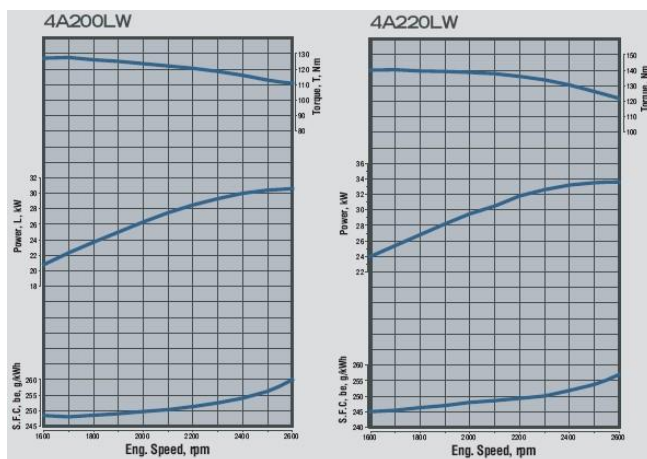
5. 4A Series Engine Specifications



daedong



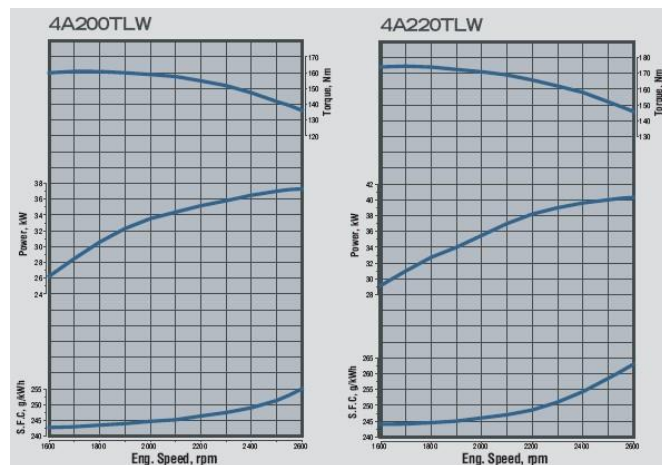
ITEM	CONTENTS		
Engine Model	4A200LW	4A220LW	4A220LWG
Application	Industrial Agricultural		Generator
Type	Vertical Water Cooled		
Aspiration	Natural		
Cylinder	4		
Bore (mm) x Stroke (mm)	83 x 92.4	87 x 92.4	
Displacement (cc)	1,999	2,197	
Rated Power (hp/rpm)	41/2600	45/2600	60Hz : 32/1800 50Hz : 24/1500
Max Torque (Kgf.m/rpm)	13.0/1700	14.3/1700	-
Max Speed (rpm)	2800	2800	Rated rpm (isochronous)
Control Device	Mechanical-governor		Electronic-governor
Emission Compliance	Tier4.interim / Stage IIIA		



6. 4A Turbo Series Engine Specifications



daedong

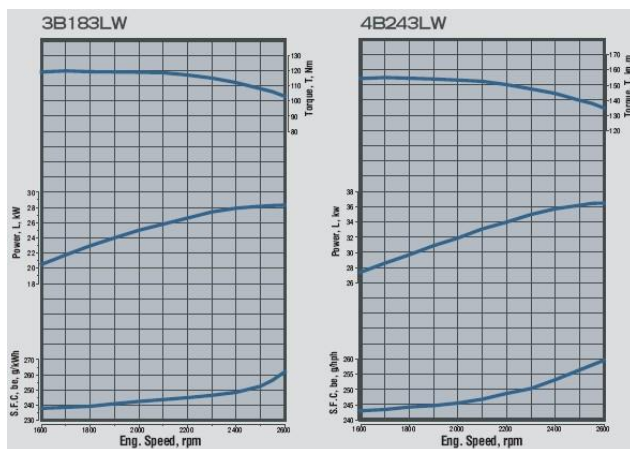


ITEM	CONTENTS	
Engine Model	4A200TLW	4A220TLW
Application	Industrial, Agricultural	
Type	Vertical Water Cooled	
Aspiration	Turbocharged	
Cylinder	4	
Bore (mm) x Stroke (mm)	83 x 92.4	87 x 92.4
Displacement (cc)	1,999	2,197
Rated Power (hp/rpm)	50/2600	54/2600
Max Torque (Kg.f.m/rpm)	16.4/1700	17.8/1700
Max Speed (rpm)	2800	2800
Emission Compliance	EPA Tier4 Interim / EEC Stage IIIA	

7. B Series Engine Specifications



daedong



ITEM	CONTENTS			
Engine Model	3B183LW	4B243LW	4B243TLW	4B243TLWG
Application	Industrial, Agricultural			Generator
Type	Vertical Water Cooled			
Aspiration	Natural		Turbocharged	
Cylinder	3	4		
Bore (mm) x Stroke (mm)	87 x 92.4	87 x 102.4		
Displacement (cc)	1,826	2,435	2,435	
Rated Power (hp/rpm)	38/2600	49/2600	59/2600	60Hz : 40/1800 50Hz : 38/1500
Max Torque (Kgf.m/rpm)	12.2/1700	15.8/1700	19.4/1700	-
Max Speed (rpm)	2800	2800	2800	Rated rpm (isochronous)
Emission Compliance	Tier4 Interim / Stage IIIA			

8. F Series Engine Specifications

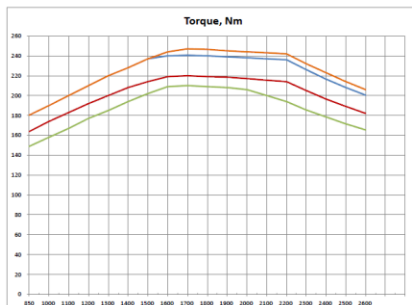


daedong



4F243T PowerCurve Tractor

Rating Standard:	ISO 14396: 2002	Fuel Types:	USA FED Off Highway	Europe Off Highway
Production Tolerance On Power Output:	+3%, -3%	Fuel Specification:	EPA Part 1065.703 ULSD	EU 2004/26/EC Annex 5
Total Barometric Pressure (kPa):	100	Density (kg/m ³ @ 15°C):	833 - 837	833 - 837
Vapour Pressure (kPa):	1	Viscosity (cSt @ 40°C):	2.3 - 3.3	2.3 - 3.3
Air Inlet Temperature (°C):	25	Sulphur Content (mg/kg):	7 - 15	10 max
		Cutane No:	40 - 50	54 max



Power: 55.0kW(60.3hp)/2600rpm Max Torque: 247Nm/1700rpm Torque Rise: 20.0%
Power: 54.5kW(73.1hp)/2600rpm Max Torque: 240Nm/1700rpm Torque Rise: 20.0%
Power: 49.5kW(66.4hp)/2600rpm Max Torque: 220Nm/1700rpm Torque Rise: 20.9%
Power: 45.0kW(60.3hp)/2600rpm Max Torque: 210Nm/1700rpm Torque Rise: 26.9%

ITEM	CONTENTS				
Engine Model	3F183	3F183T	3F183TG	4F243T	4F243TG
Application	Industrial Agricultural		Generator	Industrial Agricultural	Generator
Type	Vertical Water Cooled CRDI				
Aspiration	Natural	Turbocharged			
Cylinder	3			4	
Bore (mm) x Stroke (mm)	87 x 102.4			87 x 102.4	
Displacement (cc)	1,826			2,435	
Rated Power (hp/rpm)	38/2600	40,45,50,55 /2600	34/1800	55,60,66,73 /2600	60Hz : 45/1800 50Hz : 38/1500
Max Torque (Kgf.m/rpm)	12.8/1700	18.5/1700	-	24.5/1700	-
Max Speed (rpm)	2800	2800	Rated rpm (isochronous)	2800	Rated rpm (isochronous)
Emission Compliance	EPA Tier4 Final / EEC Stage IIIB				


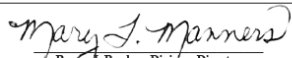
9. F Series Engine Certification



daedong



EPA Tier4 Final certification

		UNITED STATES ENVIRONMENTAL PROTECTION AGENCY 2013 MODEL YEAR CERTIFICATE OF CONFORMITY WITH THE CLEAN AIR ACT OF 1990		OFFICE OF TRANSPORTATION AND AIR QUALITY ANN ARBOR, MICHIGAN 48105	
Certificate Issued To: Daedong Industrial Company Limited (U.S. Manufacturer or Importer) Certificate Number: DDCLL02.4F7T-002		Effective Date: 04/04/2013 Expiration Date: 12/31/2013		 Mary J. Bunker, Division Director Compliance Division	
Model Year: 2013 Manufacturer Type: Original Engine Manufacturer Engine Family: DDCLL02.4F7T		Mobile/Stationary Indicator: Mobile Emissions Power Category: 37<=kW<56 Fuel Type: Diesel After Treatment Devices: PTOX-DPF-Active, Diesel Oxidation Catalyst Non-after Treatment Devices: Electronic/Electric EGR - Cooled, Electronic Control, Engine Design Modification, Electronic/Electric EGR			
Issue Date: 04/04/2013 Revision Date: N/A					

Pursuant to Section 213 of the Clean Air Act (42 U.S.C. section 7547) and 40 CFR Part 1039, and subject to the terms and conditions prescribed in those provisions, this certificate of conformity is hereby issued with respect to the test engines which have been found to conform to applicable requirements and which represent the following engines, by engine family, more fully described in the documentation required by 40 CFR Part 1039 and produced in the stated model year.

This certificate of conformity covers only those new compression-ignition engines which conform in all material respects to the design specifications that applied to those engines described in the documentation required by 40 CFR Part 1039 and which are produced during the model year stated on this certificate of the said manufacturer, as defined in 40 CFR Part 1039.

It is a term of this certificate that the manufacturer shall consent to all inspections described in 40 CFR 1068 and authorized in a warrant or court order. Failure to comply with the requirements of such a warrant or court order may lead to revocation or suspension of this certificate for reasons specified in 40 CFR Part 1039. It is also a term of this certificate that this certificate may be revoked or suspended or rendered void *ab initio* for other reasons specified in 40 CFR Part 1039.

This certificate does not cover engines sold, offered for sale, or introduced, or delivered for introduction, into commerce in the U.S. prior to the effective date of the certificate.

CARB Tier4 Final certification

California Environmental Protection Agency  Air Resources Board	DAEDONG INDUSTRIAL CO., LTD	EXECUTIVE ORDER U-R-044-0104 New Off-Road Compression-Ignition Engines
---	-----------------------------	--

Pursuant to the authority vested in the Air Resources Board by Sections 43013, 43018, 43101, 43102, 43104 and 43105 of the Health and Safety Code; and

Pursuant to the authority vested in the undersigned by Sections 39515 and 39516 of the Health and Safety Code and Executive Order G-02-003;

IT IS ORDERED AND RESOLVED: That the following compression-ignition engines and emission control systems produced by the manufacturer are certified as described below for use in off-road equipment. Production engines shall be in all material respects the same as those for which certification is granted.

MODEL YEAR	ENGINE FAMILY	DISPLACEMENT (liters)	FUEL TYPE	USEFUL LIFE (hours)
2013	DDCLL02.4F7T	2.435	Diesel	8000
SPECIAL FEATURES & EMISSION CONTROL SYSTEMS			TYPICAL EQUIPMENT APPLICATION	
Electronic Control Module, Periodic Trap Oxidizer, Exhaust Gas Recirculation, Oxidation Catalyst, Electronic Direct Injection, Turbocharger			Tractor, Other Industrial Equipment	

The engine models and codes are attached.

EEC Stage IIIB certification



GRAND-DUCHÉ DE LUXEMBOURG

Ministère du Développement durable
et des Infrastructures
Département des Transports

L-2938 Luxembourg

SOCIÉTÉ NATIONALE DE
CERTIFICATION ET D'HOMOLOGATION
S.à r.l.

Registre de Commerce: B 27180

L-5201 Sandweiler



Référence: e13*97/68PA*2011/88*0748*00

Annexes: - Rapport technique
- Fiche de renseignements du constructeur

Sandweiler, le 05 mars 2013

CERTIFICAT DE RECEPTION CE PAR TYPE EC TYPE-APPROVAL CERTIFICATE

Communication concernant / Communication concerning:

- la délivrance d'une réception / type approval
- l'extension d'une réception / extension of type approval
- le refus d'une réception / refusal of type approval
- le retrait d'une réception / withdrawal of type approval

d'un type de moteur / famille de moteurs, en ce qui concerne les émissions de polluants, en application la Directive 97/68/CE, modifiée en dernier lieu par la Directive 2011/88/UE. Of an engine type or family of engine types with regard to the emission of pollutants pursuant to Directive 97/68/EC, as last amended by Directive 2011/88/EU

Réception par type Nr. / Type-approval number: e13*97/68PA*2011/88*0748*00

Motif de l'extension (le cas échéant): sans objet / not applicable
Reason for extension (where appropriate):

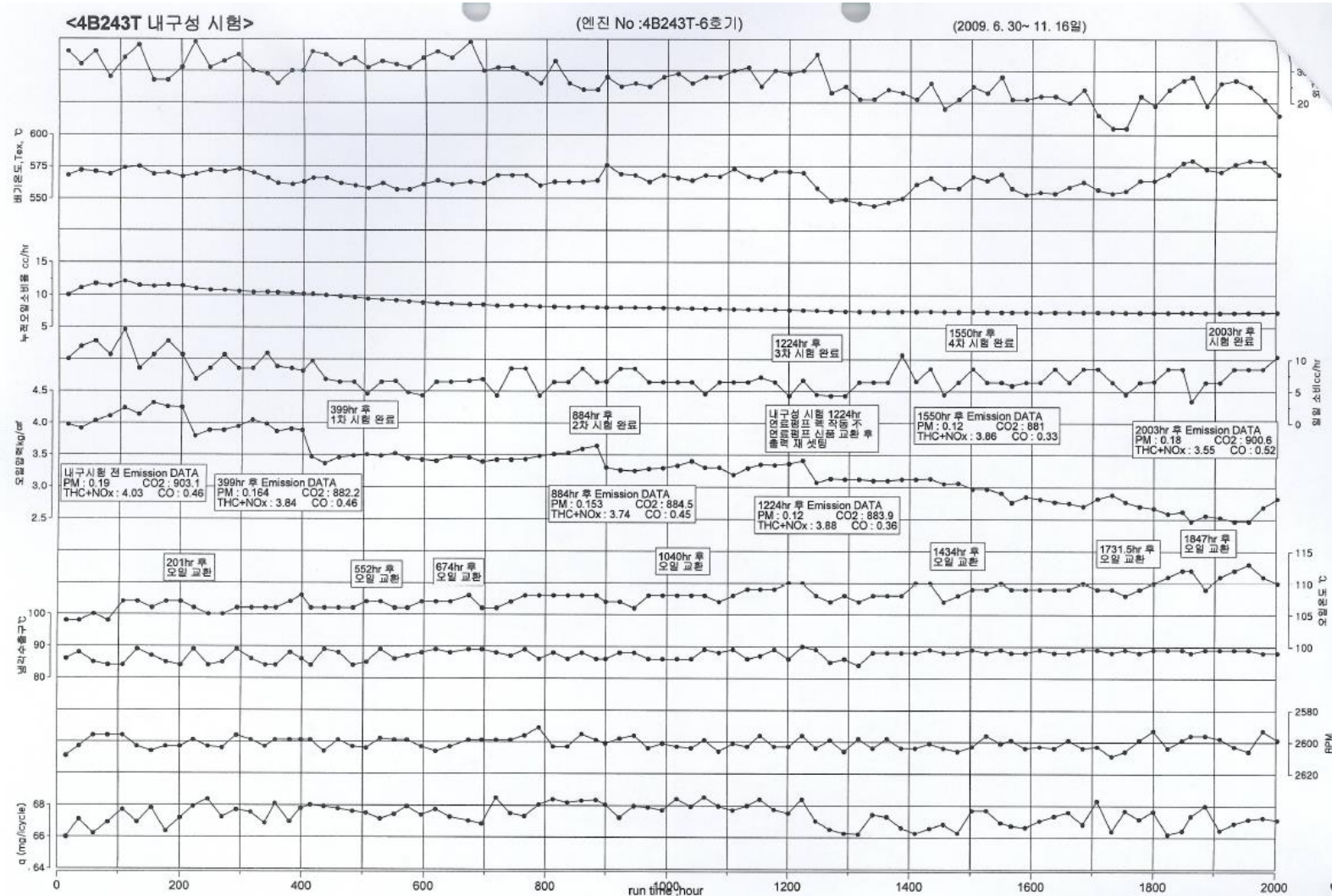
PARTIE I
PART I

10. Endurance Performance

Endurance (Reliability) Test Data

Test condition : Engine Assembled full parts.

Test Power : Full Load 55min+ High idle 5min /cycle.



11. Variable Applications



daedong





THANK YOU