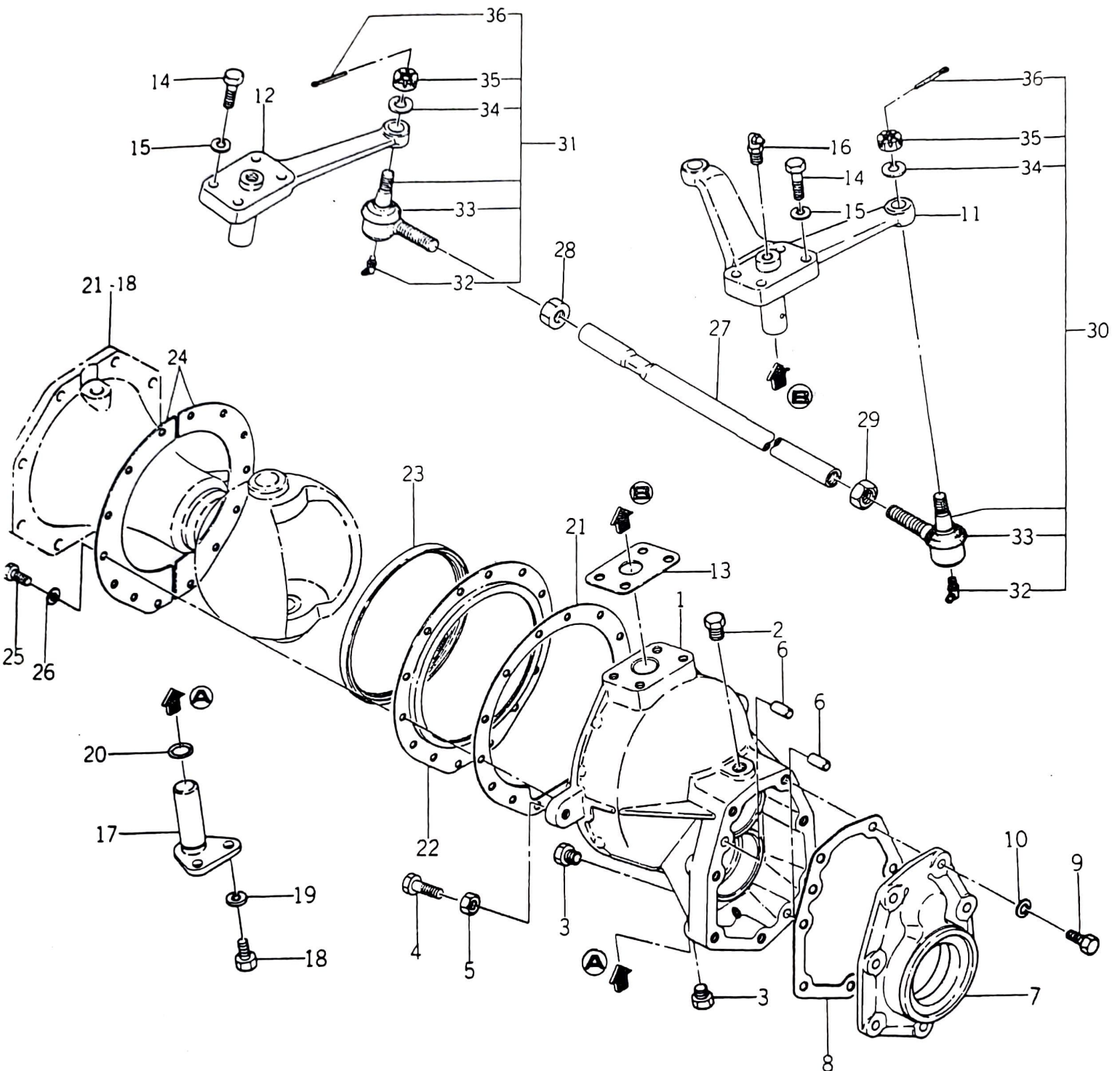


Ref No.		Description	Model & Q'ty				ISEKI Parts No.	Remarks
			1502 T	1504 F		1704 F		
21- 1	1873901	CASE, BEVEL (INCL REF 6 & 8)		1		1	1427-431-2000-0	
21- 2	1877902	PLUG, DRAIN		1		1	7955-201-0260-0	
21- 3	1871309	PLUG, DRAIN		1		1	1326-706-0020-0	
21- 4	1871727	PIVOT, CENTER		1		1	1427-431-2000-0	
21- 5	1860412	WASHER/M20		1		1	V41116-002000	
21- 6	1873902	BUSH/20×30×26		2		2	1434-431-0020-0	
21- 7	1873903	O-RING/S20		2		2	1434-431-0030-0	
21- 8	1873904	O-RING/S26		2		2	1434-431-0050-0	
21- 9	1873905	O-RING/S22		2		2	1434-431-0040-0	
21-10	1871718	WASHER/13×32×3		1		1	1427-431-0030-0	
21-11	1860316	NUT, SLOTTED/M12		1		1	V32116-001200	
21-12	1860507	PIN, SPLIT/3×25		1		1	V50015-300250	
21-13	1873906	METAL, PINION		1		1	1427-431-0060-0	
21-14	1871721	PACKING, METAL		1		1	1427-431-0070-0	
21-15	1860724	O-RING/P71		1		1	V72010-570710	
21-16	1860217	BOLT/M8×25		3		3	V20126-080250	
21-17	1860403	WASHER, SP/M8		3		3	V40116-000800	
21-18	1871737	HOUSING, AXLE LH SET		1		1	1427-432-2000-0	
21-19	1871739	HOUSING, AXLE RH SET		1		1	1427-432-2100-0	
21-20	1871742	• BUSH, KING PIN		4		4	1427-432-0140-0	
21-21	1871738	PACKING, HOUSING LH		1		1	1427-432-0090-0	
21-22	1860217	BOLT/M8×25		8		8	V20126-080250	
21-23	1860403	WASHER, SP/M8		8		8	V40116-000800	
21-24	1871740	PACKING, HOUSING RH		1		1	1427-432-0120-0	
21-25	1873908	BOLT/M10×30		5		5	V20146-100300	
21-26	1860409	WASHER, SP/M10		5		5	V40126-001000	
21-27	1871741	BOLT/M12		2		2	1427-432-0130-0	
21-28	1860311	NUT/M12		2		2	V30226-001200	
21-29	1871758	BEARING, 1B/TAG20Z-1		2		2	1427-433-0150-0	

Fig. 22 FRONT AXLE CASE AND KNUCKLE ARM SYSTEM (4WD)



Ref No.		Description	Model & Qty			ISEKI Parts No.	Remarks
			1502 T	1504 F	1704 F		
22- 1	1871745	CASE, F. GEAR		2	2	1427-433-0010-0	
22- 2	1877902	PLUG, DRAIN		2	2	7955-201-0260-0	
22- 3	1871309	PLUG, DRAIN		4	4	1326-706-0020-0	
22- 4	1871746	BOLT/M10		2	2	1427-433-0020-0	
22- 5	1860314	NUT/M10		2	2	V30526-001000	
22- 6	1860512	PIN, B/8x16		4	4	V52110-080160	
22- 7	1871751	METAL, WHEEL		2	2	1427-433-0070-0	
22- 8	1871752	PACKING, METAL		2	2	1427-433-0080-0	
22- 9	1860218	BOLT/M8x30		14	14	V20126-080300	
22-10	1860403	WASHER, SP/M8		14	14	V40116-000800	
22-11	1871768	ARM, KNUCKLE LH		1	1	1427-433-2100-0	
22-12	1871769	ARM, KNUCKLE RH		1	1	1427-433-2200-0	
22-13	1871756	PACKING, KNUCKLE ARM		2	2	1427-433-0130-0	
22-14	1860236	BOLT/M8x35		8	8	V20146-080350	
22-15	1860403	WASHER, SP/M8		8	8	V40116-000800	
22-16	1860736	NIPPLE, GREASE/1/8		2	2	V76140-000000	
22-17	1871770	PIN, KING B		2	2	1427-433-2300-0	
22-18	1860214	BOLT/M8x16		4	4	V20126-080160	
22-19	1860403	WASHER, SP/M8		4	4	V40116-000800	
22-20	1871757	O-RING/S18		2	2	1427-433-0140-0	
22-21	1871759	PACKING, SET PLATE		2	2	1427-433-0160-0	
22-22	1871760	PLATE, SEAL SET A		2	2	1427-433-0170-0	
22-23	1871761	SEAL/134		2	2	1427-433-0180-0	
22-24	1871762	PLATE, SEAL SET B		4	4	1427-433-0190-0	
22-25	1860202	BOLT/M6x16		28	28	V20026-060160	
22-26	BUY LOC.	WASHER, SP/M6		28	28	V40116-000600	
22-27	1871763	ROD, TIE		1	1	1427-433-0210-0	
22-28	1871764	NUT/M12		1	1	1427-433-0220-0	
22-29	1871765	NUT, LH THREAD/M12		1	1	1427-433-0230-0	
22-30	1871771	END, TIE ROD LH ASSY		1	1	1427-433-2400-0	
22-31	1871772	END, TIE ROD RH ASSY		1	1	1427-433-2500-0	
22-32	1871420	• NIPPLE, GREASE		2	2	1404-402-0050-0	
22-33	1871766	• COVER, DUST		2	2	1427-433-0250-0	
22-34	1860404	• WASHER, SP/M10		2	2	V40116-001000	
22-35	1860317	• NUT, SLOTTED/M10		2	2	V32126-001000	
22-36	1860505	• PIN, SPLIT/25x25		2	2	V50015-250250	