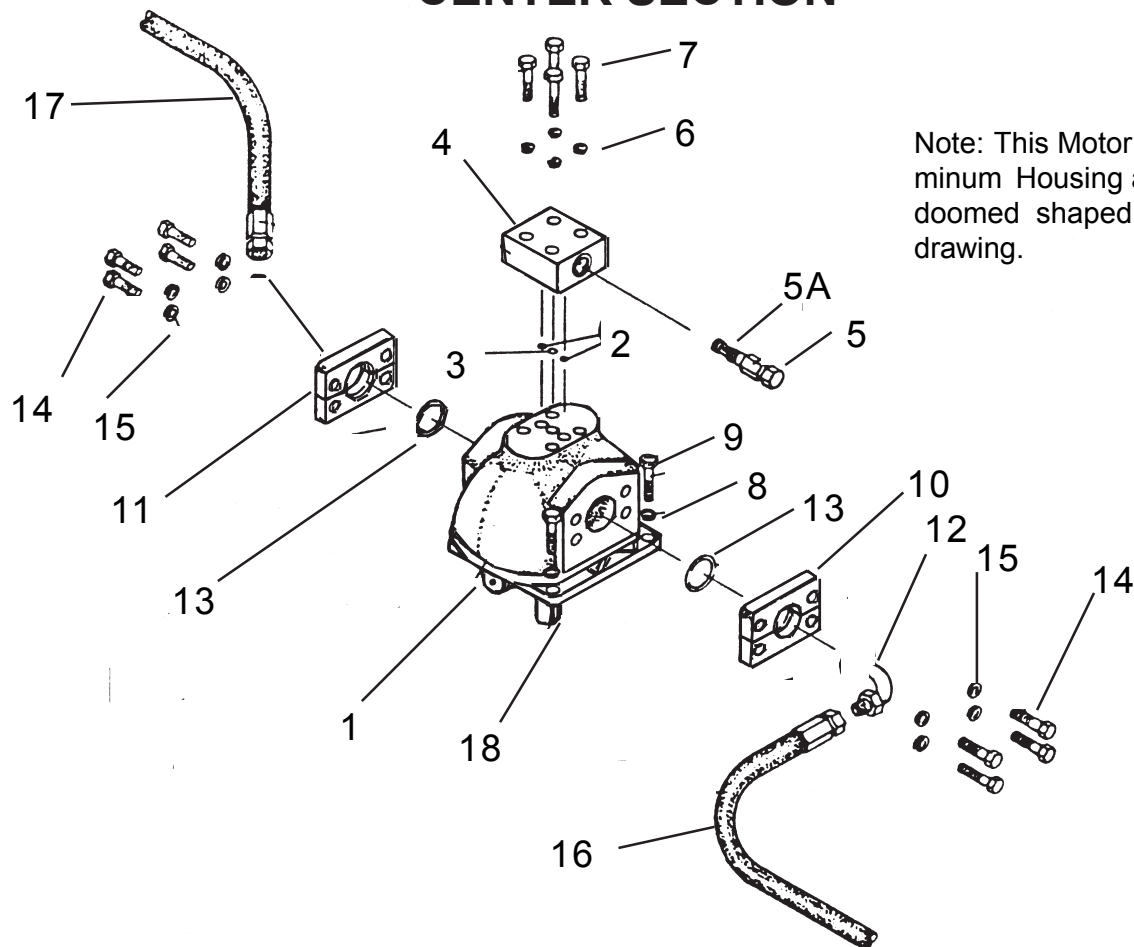


Mar. 1981
to
Jan. 1983

HYDRAULIC MOTOR P/N 00751482 CENTER SECTION

S/N HY15-38681
to
S/N HY15-40185



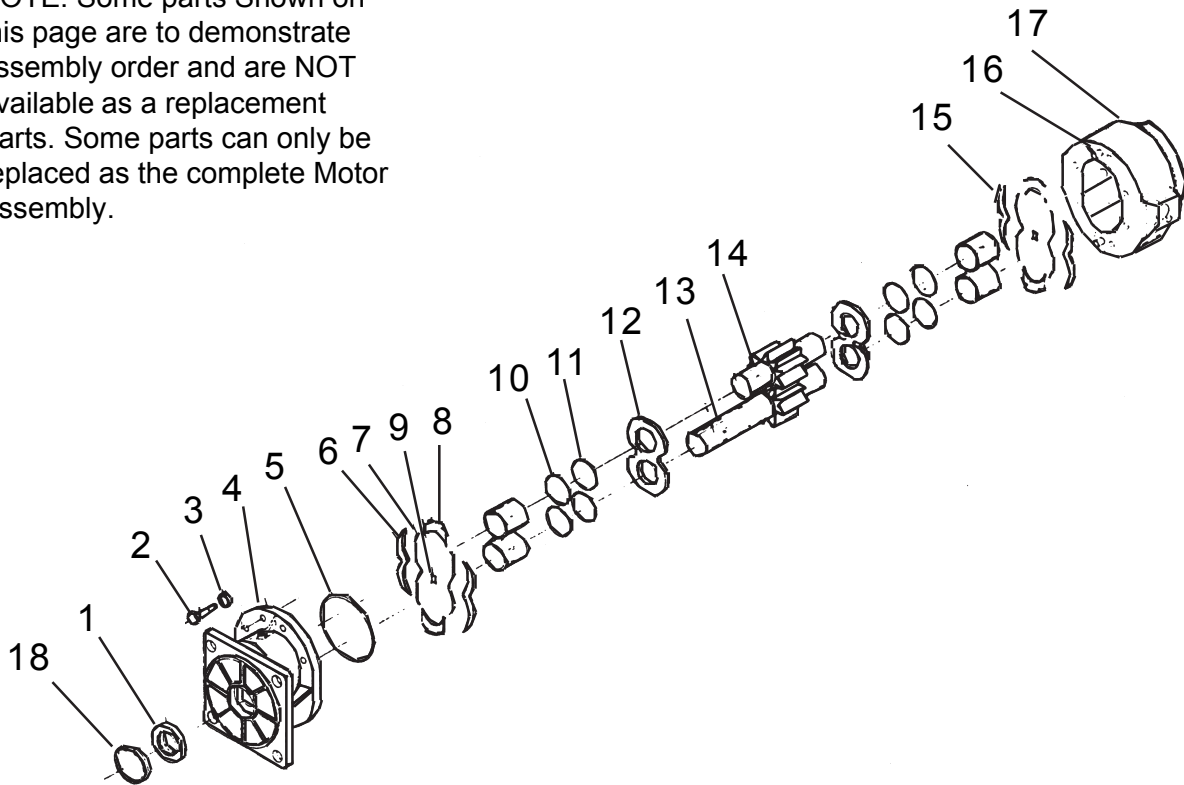
ITEM	PART NO.	QTY	DESCRIPTION
1	00751482	1	Hydraulic Motor
2	00751485	2	O-Ring
3	00751486	1	O-Ring
4	00751786	1	Relief Manifold
5	00751791	1	Relief Valve, (Set at 2500 PSI)
5A	00753021	1	O-Ring Kit
6	00012101	4	Lockwasher
7	00059900	4	Bolt
8	63000500	4	Washer
9	02776600	4	Bolt
10	00751446	1	Adapter Plate - 3/4"
11	00751445	1	Adapter Plate - 1"
12	02041800	1	Elbow - 90
13	02044400	2	O-Ring
14	02043800	8	Bolt, Socket Head
15	02043800	8	Lockwasher
16	00751497	ref	Hose - 3/4" - Junction to Center Moter
17	00751500	ref	Hose - Center Motor to RH Wing
18	02724500	1	Key

Mar. 1981
to
Jan. 1983

HYDRAULIC MOTOR P/N 00751482 CENTER SECTION REPAIR PARTS

S/N HY15-38681
to
S/N HY15-40185

NOTE: Some parts Shown on this page are to demonstrate assembly order and are NOT available as a replacement Parts. Some parts can only be replaced as the complete Motor Assembly.

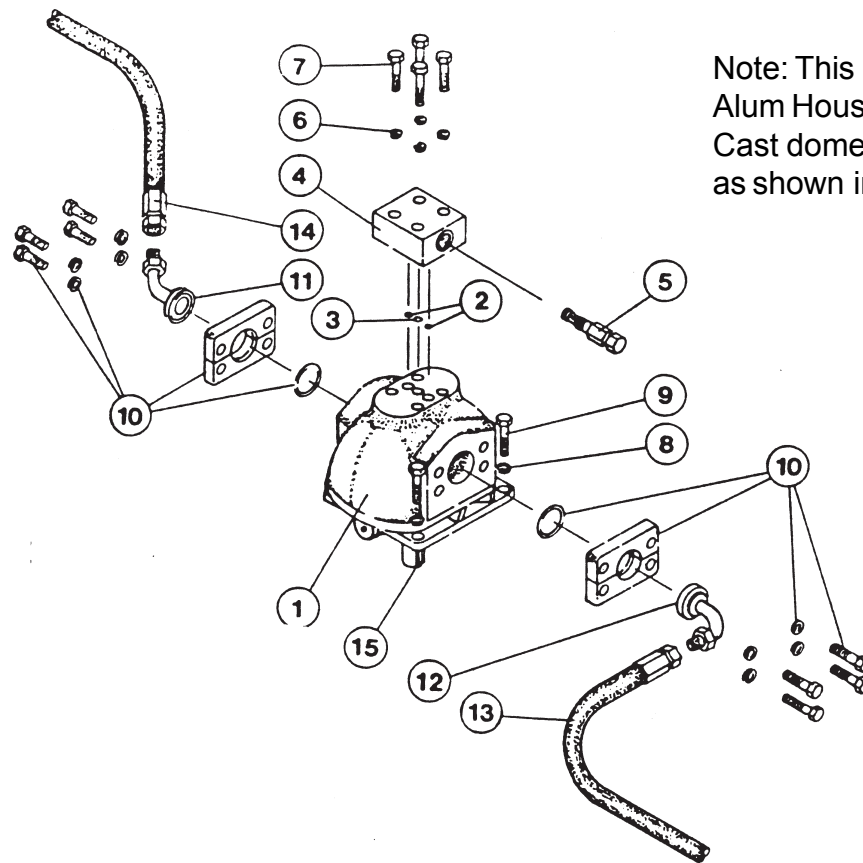


ITEM	PART NO	DESCRIPTION
1	-----	Seal
2	-----	Capscrew
3	-----	Washer
4	02721000	Flange
5	-----	"O" -Ring
6	02721500	Isolation Plate (Square Edge)
7	-----	Sealing Strip
8	-----	End Seperator
10	-----	U- Cup
11	-----	"O"- Ring
12	02721300	Pressure Plate
13	00752431	Drive Gear & Idler Set
15	02721400	Isolation Plate (Round Edge)
16	----N/A----	Dowel
17	----N/A----	Body
18	02721800	Snap Ring
	02720000	A/R Seal Kit (items 1,5,7,8,9,10 & 11)

Feb. 1983
to
May. 1987

HYDRAULIC MOTOR P/N 00751482 CENTER SECTION

S/N HY15-40186
to
S/N HY15-46045



Note: This Motor has an
Alum Housing and is
Cast domed shaped
as shown in drawing

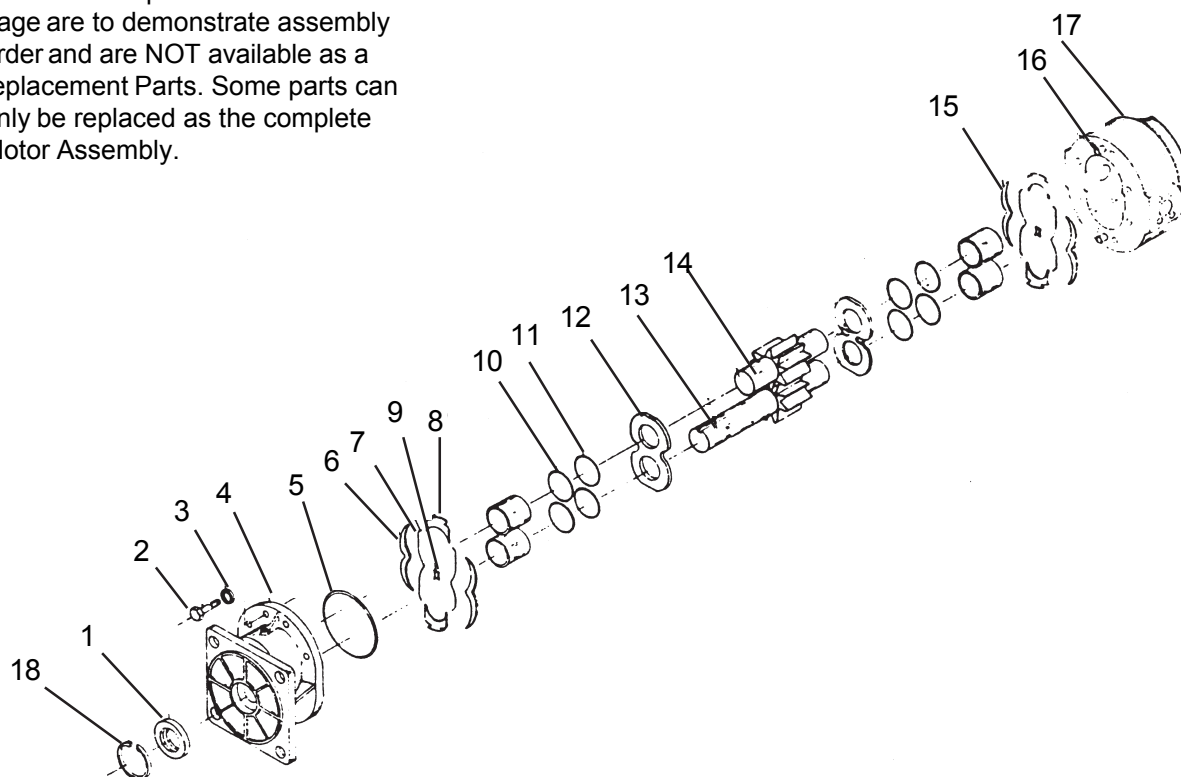
ITEM	PART NO	QTY	DESCRIPTION
1	00751482	1	Hydraulic Motor
2	00751485	2	"O"- Ring
3	00751486	1	"O"-Ring
4	00751786	1	Relief Manifold
5	00751791	1	Relief Valve (Set at 2500 PSI)
6	00012101	4	Lockwasher
7	00059900	4	Bolt
8	63000500	4	Washer
9	02776600	4	Bolt
10	00749103	2	Split Flange Kit
11	02705100	1	Elbow- 45
12	00751844	1	Elbow- 90
13	00751497	ref	Hose-3/4" - Junction to Cent. Sec. Motor
14	00751845	ref	Hose-1"- Central Section Motor to Right Wing Deck
15	02724500	reff	Key
16	00751479	ref	Motor, Spindle, & Relief Valve Ass'y (items 1 Thru 12 & 17)
17	00751759	ref	Spindle Housing Assembly (Not Shown)

Feb. 1983
to
May 1987

HYDRAULIC MOTOR P/N 00751482 CENTER SECTION REPAIR PARTS

S/N HY15-40186
to
S/N HY15-46045

NOTE: Some parts Shown on this page are to demonstrate assembly order and are NOT available as a replacement Parts. Some parts can only be replaced as the complete Motor Assembly.



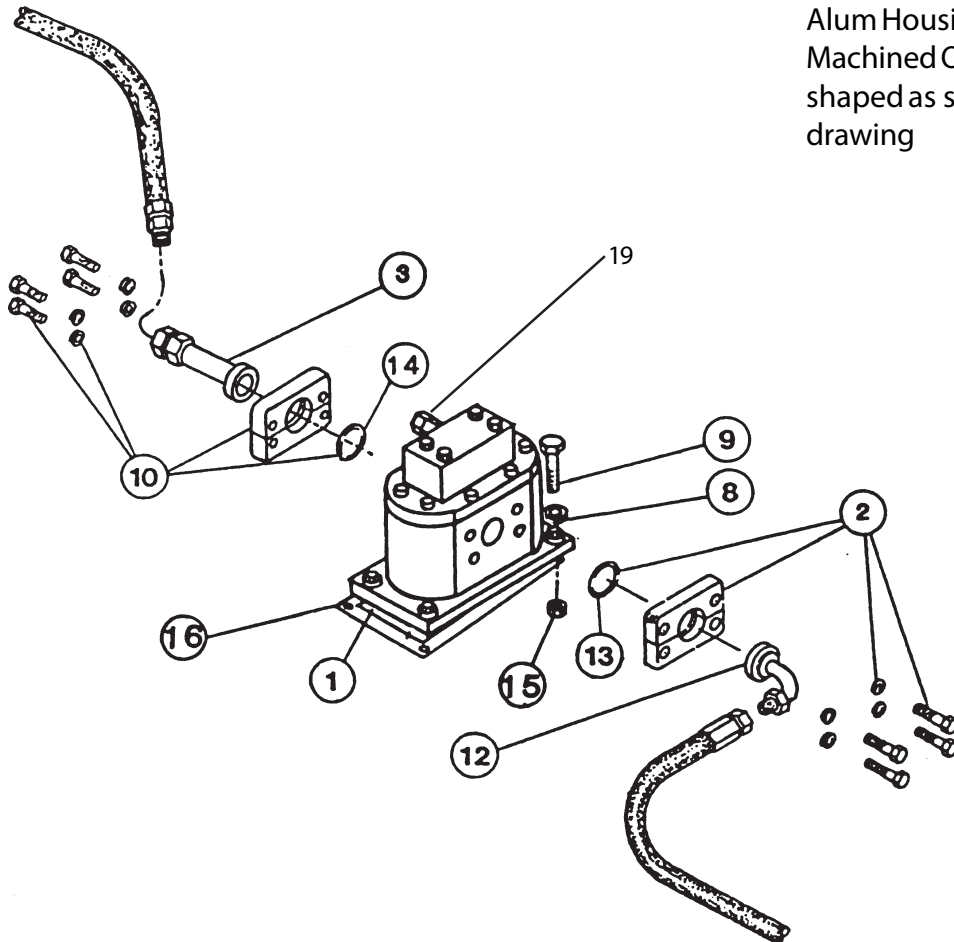
ITEM	PART NO	DESCRIPTION
1	_____	Seal
2	_____	Capscrew
3	_____	Washer
4	02721000	Flange
5	_____	"O" -Ring
6	02721500	Isolation Plate (Square Edge)
7	_____	Sealing Strip
8	_____	End Seperator
10	_____	U- Cup
11	_____	"O"- Ring
12	02721300	Pressure Plate
13	00752431	Drive Gear & Idler Set
15	02721400	Isolation Plate (Round Edge)
16	---N/A---	Dowel
17	---N/A---	Body
18	02721800	Snap Ring
	02720000	A/R Seal Kit (items 1,5,7,8,9,10 & 11)

Jun. 1987
to
Sep. 1992

HYDRAULIC MOTOR P/N 00754112 CENTER SECTION

S/NHY15D-46046
to
S/NHY15E-01527

Note: This Motor has an
Alum Housing and is
Machined Ob-Long
shaped as shown in
drawing

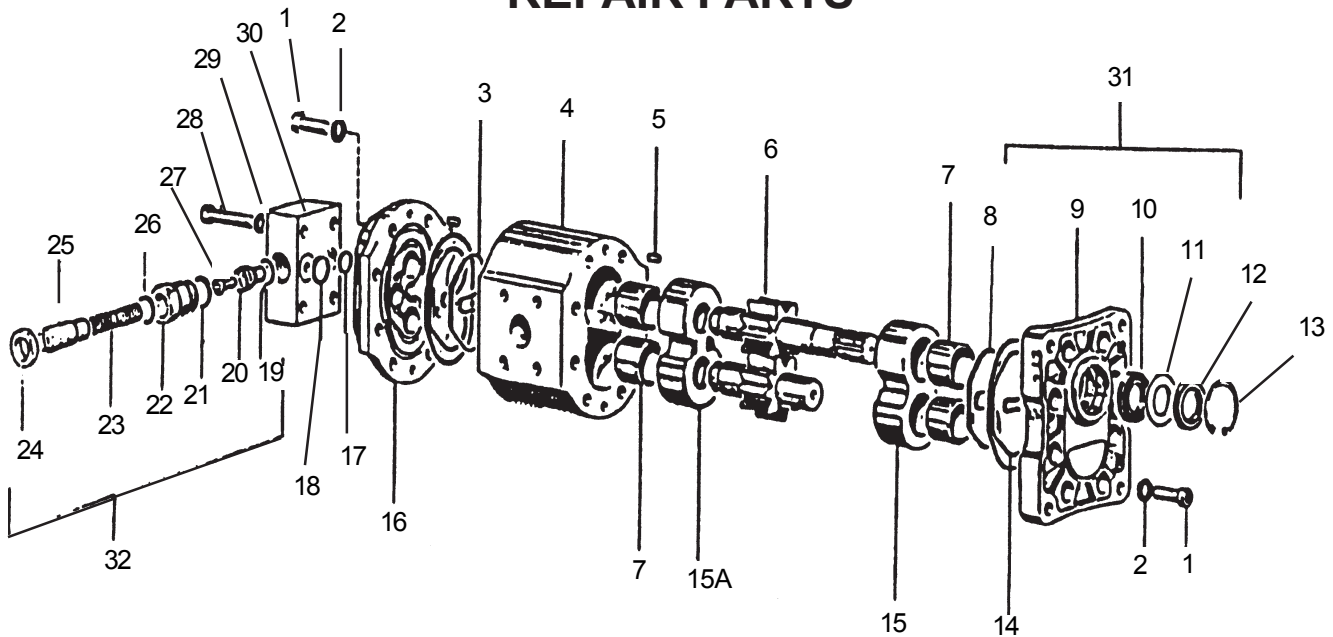


ITEM	PART NO	QTY	DESCRIPTION
1	00754112	1	Hydraulic Motor
2	00749103	1	Split Flange Kit
3	02156700	1	Adaptor
8	63000500	4	Washer
9	02788400	4	Bolt
10	02827700	1	Split Flange Kit
12	00751844	1	Elbow, 90 degrees
13	02044400	1	O-Ring
14	02044200	1	O-Ring
15	00001800	4	Locknut TLM 1/2 NC PLC
16	00754548	1	Gasket
17	00755820	ref	Spindle Assembly (Not Shown)
18	00755825	ref	Spindle & Motor Assembly, (Not Shown)
19	00754618	ref	Relief Valve (Set at 2500 PSI)

Jun. 1987
to
Sep. 1992

HYDRAULIC MOTOR P/N 00754112 CENTER SECTION REPAIR PARTS

S/N HY15D-46046
to
S/N HY15E-01527

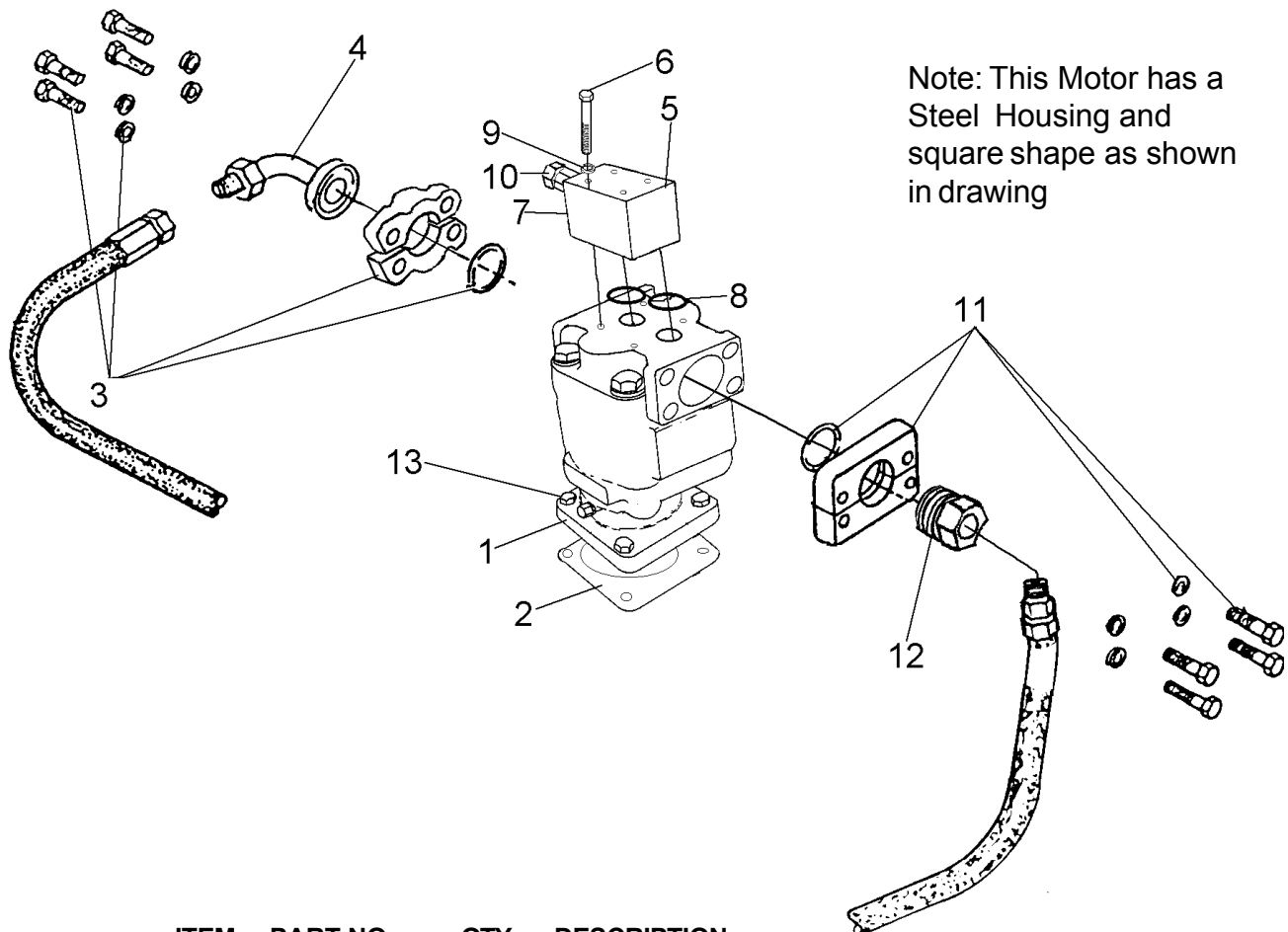


ITEM	PART NO	QTY	DESCRIPTION	ITEM	PART NO	QTY	DESCRIPTION
1	00754585	16	Bolt	22	00754608	1	Relief
2	00754586	16	Lockwash	23	00754609	1	Relief
3	00754552	2	Ring	24	00754610	1	Nut
4	00754588	1	Body	25	00754611	1	Relief
5	00754589	4	Dowel	26	00754612	1	O-Ring
6	00754590	1	Drive Gear	27	00754613	1	Relief
7	00754591	4	Bearing	28	00754614	4	Bolt
8	00754592	2	O-Ring	29	00754577	4	Lockwasher
9	00754593	1	Flange	30	00754615	1	Relief Manifold
10	00754595	1	Bearing	31	00754616	ref	Bottom Flange Assembly
11	00754596	1	Shim	32	00754618	ref	Relief Valve Kit (2500psi)
12	00754597	1	Seal		00754617	ref	Seal Kit
13	00754598	1	Snap Ring				
14	00754599	2	O-Ring				
15	00754600	1	Gear Housing				
15A	00754601	1	Gear Housing				
16	00754602	1	Body				
17	00754603	2	O-Ring				
18	00754604	1	O-Ring				
19	00754605	1	O-Ring				
20	00754606	1	Relief				
21	00754607	1	O-Ring				

Oct. 1992
to
May 2003

HYDRAULIC MOTOR P/N 00762685 CENTER SECTION

S/N HY15F-01528
to
S/N HY15F-02394

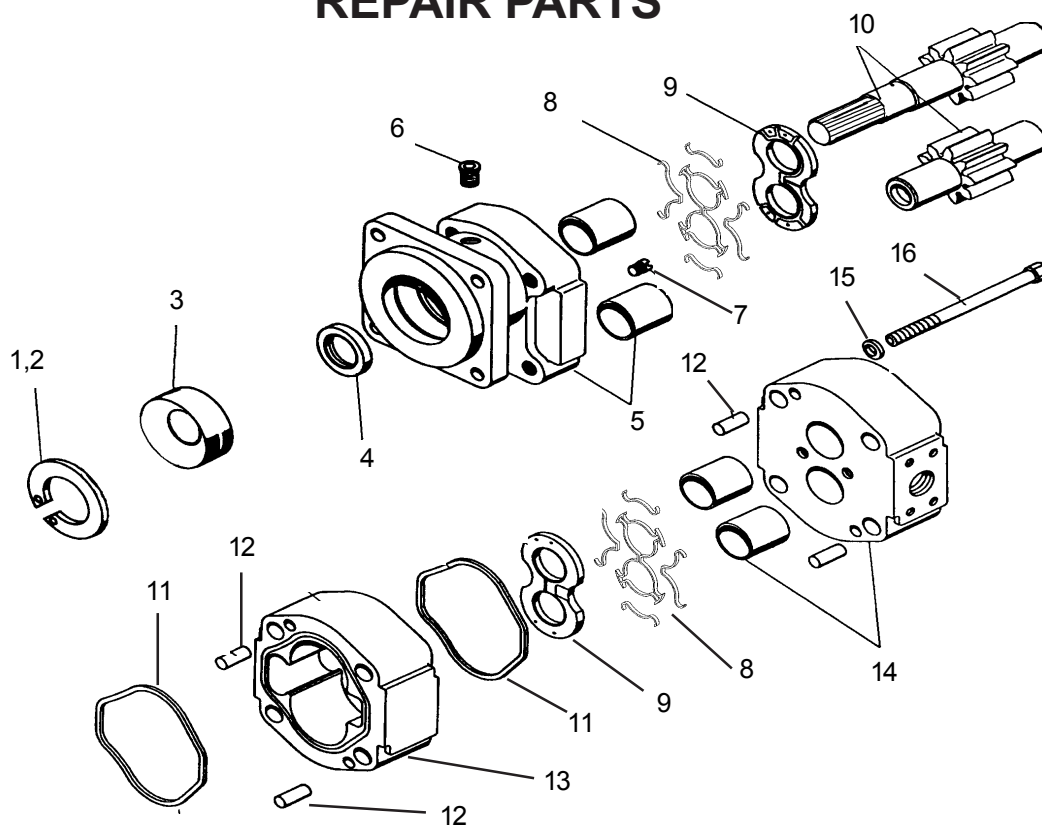


ITEM	PART NO.	QTY	DESCRIPTION
1	00762685	1	Motor
2	02961038	1	Gasket
3	00749103	1	Split Flange Kit
4	00751844	1	Elbow
5	00760886	1	Block
6	10074000	4	Bolt
7	02961940	1	Plug
8	00761699	2	O-Ring
9	00017000	4	Lockwasher
10	00751791	1	Relief Valve (Set at 2500 PSI)
11	02827700	1	Flange Kit
12	02156700	1	Reducer
13	02892000	4	Bolt
14	00752692	ref	Motor & Spindle Assembly (Not Shown)
15	02960553B	ref	Spindle Assembly (Not Shown)

Oct. 1992
To
May 2003

HYDRAULIC MOTOR P/N 00762685 CENTER SECTION REPAIR PARTS

S/N HY15F-01528
To
S/N HY15F-02394

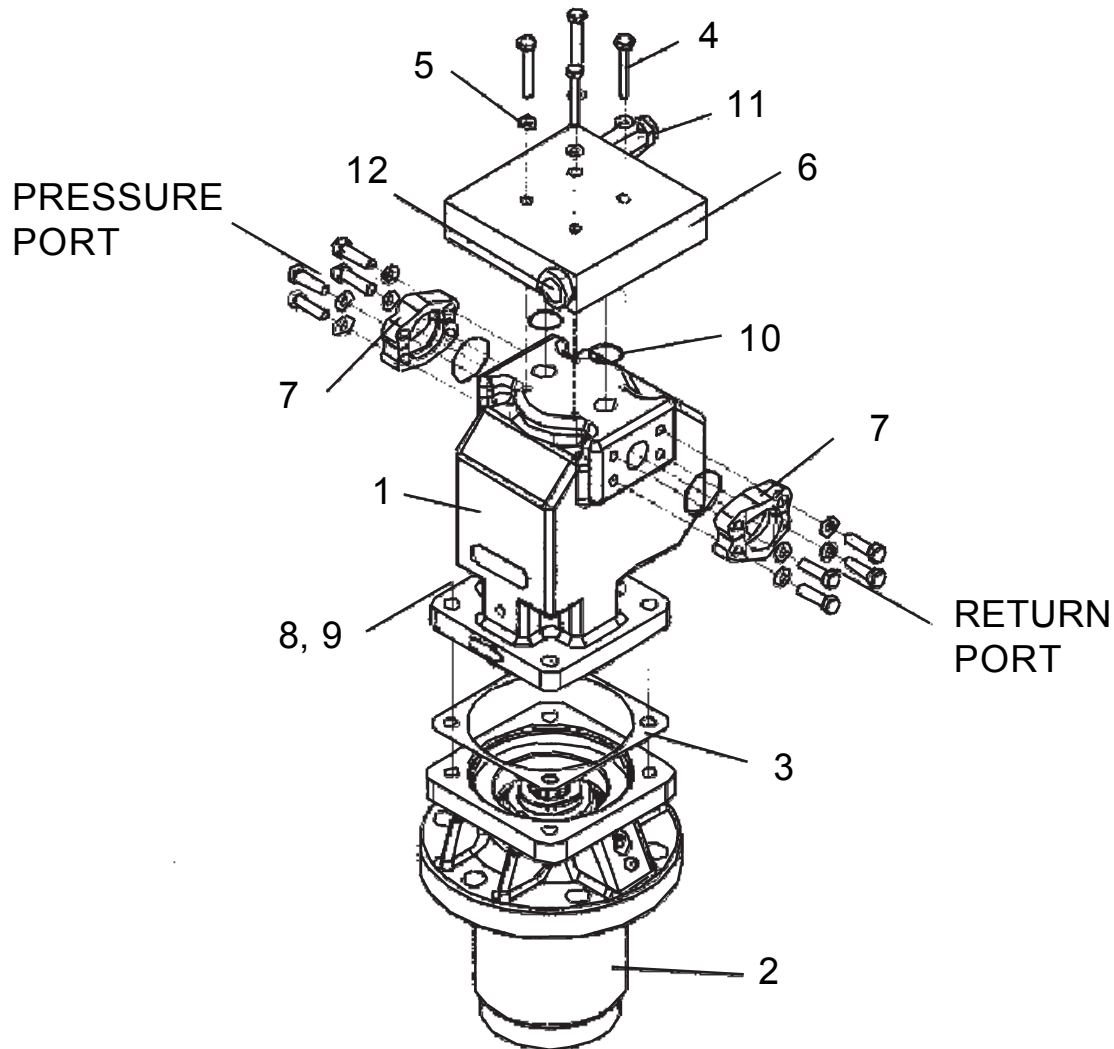


ITEM	PART NO.	QTY	DESCRIPTION
1	02961933	1	Snap Ring
3	00763757	1	Seal Retainer
4*	00763756	1	Seal
5	00763828	1	Mounting Flange w/Bushings
6	02961940	1	Plug
7	02961931	2	Check Assembly
8*	_____	4	Seal End
9*	00763759	2	Thrust Plate
10	02961929	1	Gear Set
11*	_____	2	Square Seal
12	02961924	4	Dowel Pin
13	02961928	1	Gear Housing
14	00763829	1	Porting Flange w/Bushing
15	02961917	4	Washer
16	00763832	4	Bolt
17*	_____	4	Side Seal (Not Shown)
18	00763762	—	Seal Kit

Jun. 2003
to
Current

HYDRAULIC MOTOR P/N 02975415 CENTER SECTION

S/N HY15F-02395
to
S/N HY15F-Current

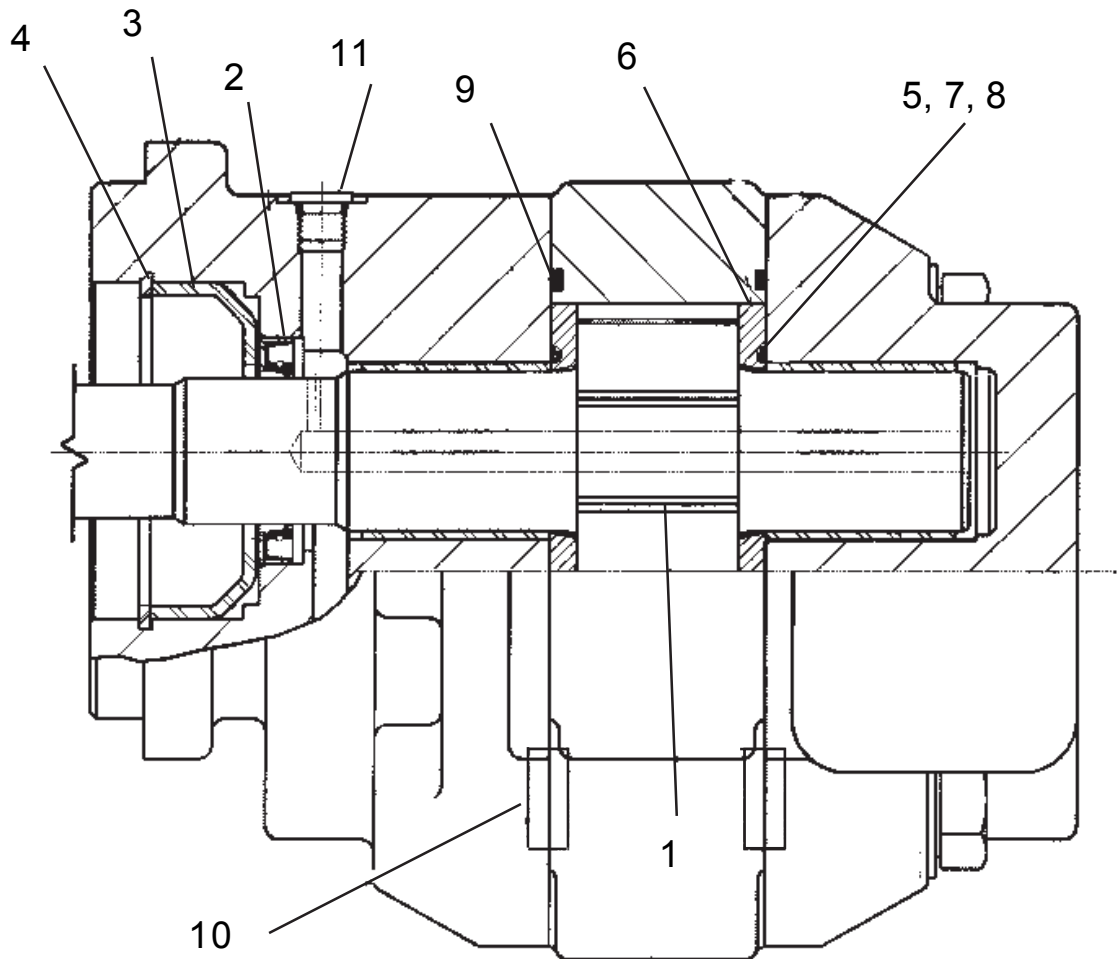


Item	Part No.	Qty	Description
	02979415	-	Hydro 15 Center Motor Assy
1	02978485	1	Motor
2	02960553b	1	Assy, Spindle Housing Splined
3	02961038	1	Gasket
4	00016200	4	HHCS
5	00011700	4	Lockwasher
6	02978488	1	Center Mtr Manifold, Hydro 15
7	00750317	2	Split Flange Kit
8	02892000	4	Bolt 1/2 NC 1 1/2" LG
9	00001300	4	Lockwasher
10	02979490	Ref.	O-Ring
11	02979493	Ref.	Relief Cartridge, 3000 PSI
12	02979497	Ref.	Cartridge, Check Valve

Jun. 2003
To
Current

HYDRAULIC MOTOR P/N 02978485 CENTER SECTION REPAIR PARTS

S/N HY15F-02395
To
S/N HY15F-Current

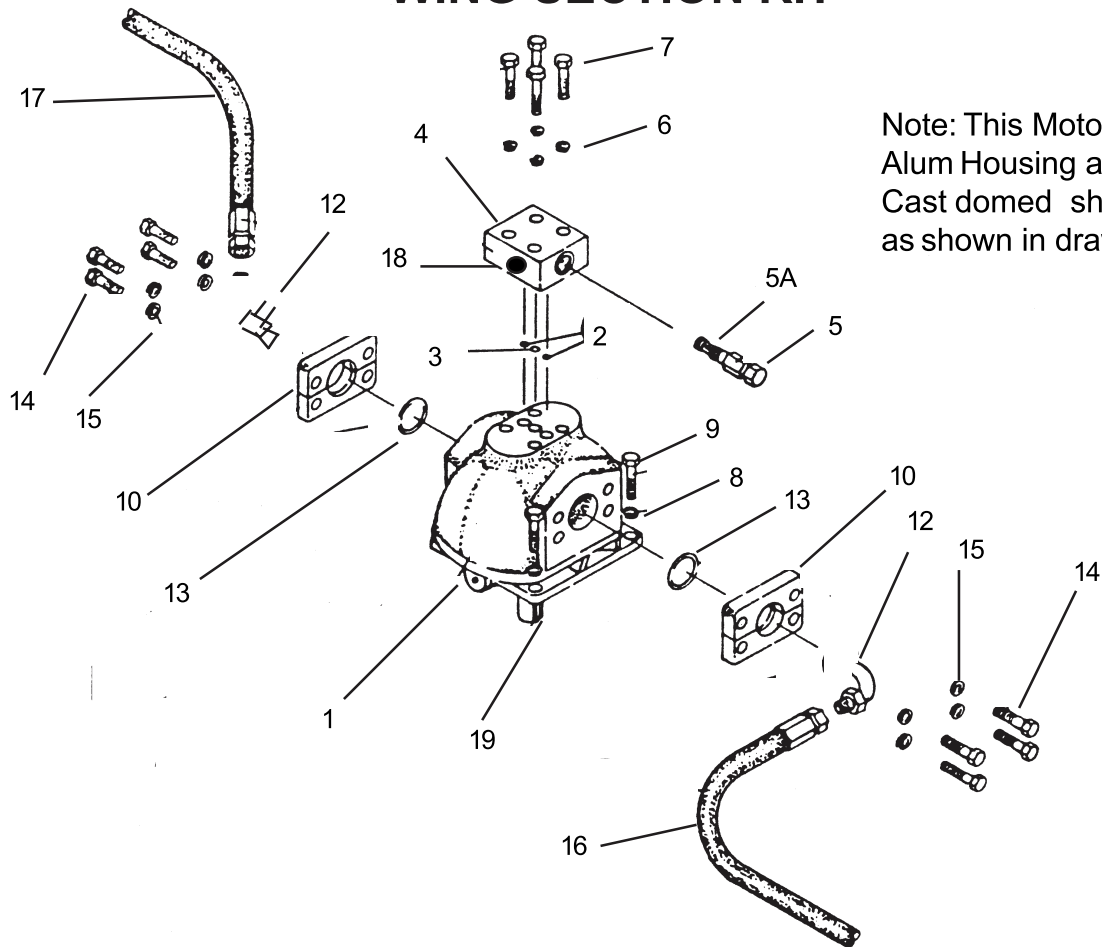


Item	Part No.	Qty	Description
	02978485	-	Motor, Center Section
1	02979968	1	Set, Gear Shaft
2	02979958	1	Lip Seal
3	02979959	2	Rtnr, Seal
4	02979960	2	Snap Ring
5	02979961	2	Seal, Backup
6	02979962	2	THRPL
7	02979963	8	Seal, End
8	02979964	2	Seal, Side
9	02979965	2	Seal, SQ-R
10	02979966	1	Dowel Pin
11	02979967	4	Plug, ODT
12	02980331	1	Seal, Kit (Not Shown)

Mar. 1981
to
Jan. 1983

HYDRAULIC MOTOR P/N 00751482 WING SECTION RH

S/N HY15-38681
to
S/N HY15-40185



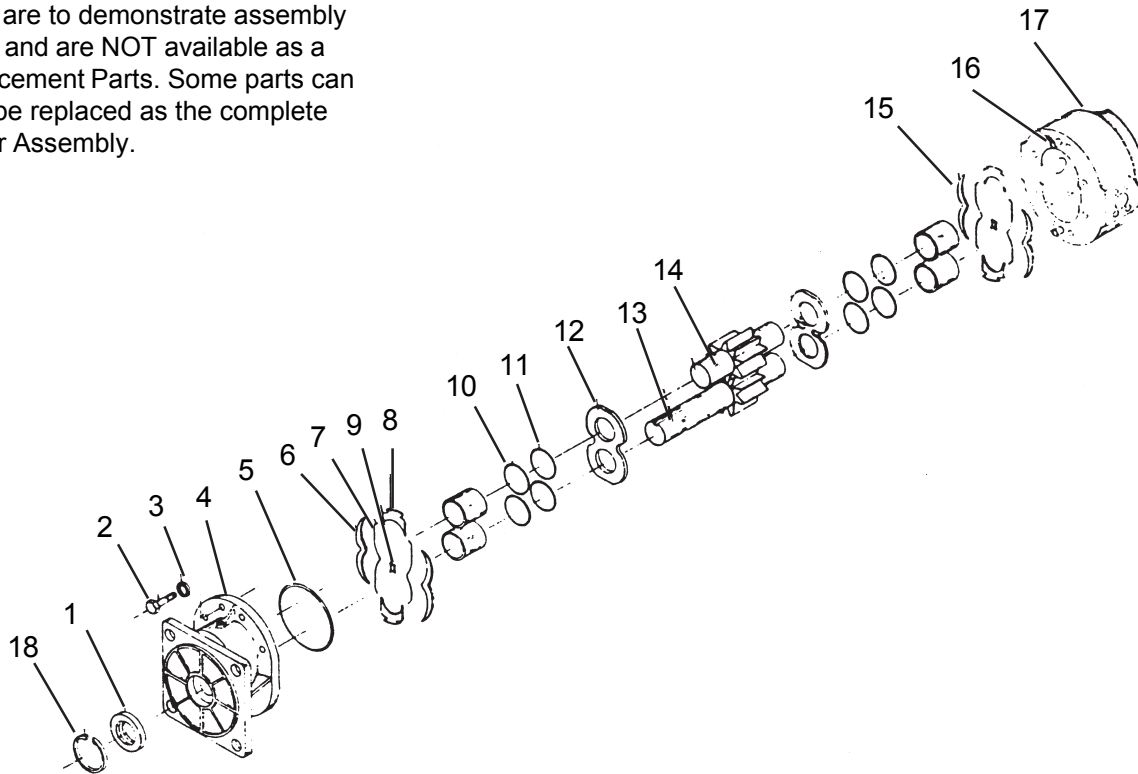
ITEM	PART NO.	QTY	DESCRIPTION
1	00751482	1	Hydraulic Motor
2	00751485	2	O-Ring
3	00751486	1	O-Ring
4	00751785	1	Relief Manifold *NO LONGER AVAILABLE
5	00751790	1	Relief Valve, W/Case drain, Set at 1500 PSI
5A	00753021	1	O-Ring Kit
6	00012101	4	Lockwasher
7	00059900	4	Bolt
8	63000500	4	Washer
9	02776600	4	Bolt
10	00751446	2	Adapter Plate - 3/4"
12	02041800	2	Elbow - 90
13	02044400	2	O-Ring
14	02043800	8	Bolt, Socket Head
15	02043800	8	Lockwasher
16	00751497	ref	Hose - 3/4" - Junction to Center Motor
17	00751500	ref	Hose - Center Motor to RH Wing
18	00751494	ref	Hose - 3/8" - Case Drain to Deck (Not Shown)
19	02724500	1	Key

Mar. 1981
To
Jan. 1983

HYDRAULIC MOTOR P/N 00751482 WING SECTION RH REPAIR PARTS

S/N HY15-38681
to
S/N HY15-40185

NOTE: Some parts Shown on this page are to demonstrate assembly order and are NOT available as a replacement Parts. Some parts can only be replaced as the complete Motor Assembly.

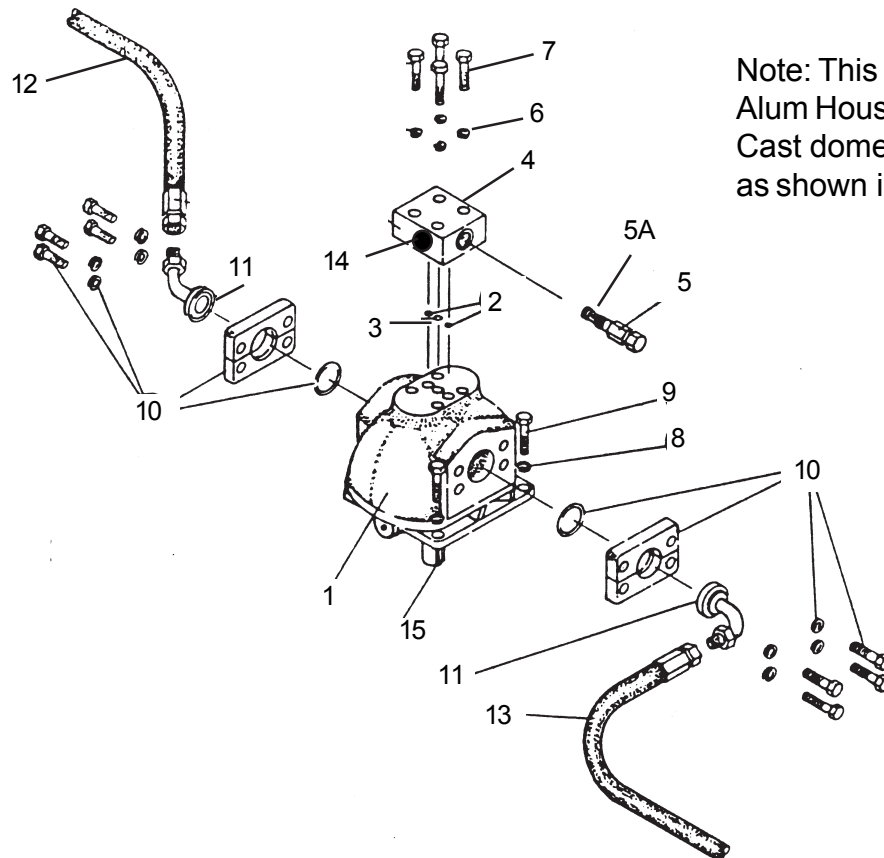


ITEM	PART NO	DESCRIPTION
1	_____	Seal
2	_____	Capscrew
3	_____	Washer
4	02721000	Flange
5	_____	"O" -Ring
6	02721500	Isolation Plate (Square Edge)
7	_____	Sealing Strip
8	_____	End Seperator
10	_____	U- Cup
11	_____	"O"- Ring
12	02721300	Pressure Plate
13	00752431	Drive Gear & Idler Set
15	02721400	Isolation Plate (Round Edge)
16	---N/A---	Dowel
17	---N/A---	Body
18	02721800	Snap Ring
	02720000	A/R Seal Kit (items 1,5,7,8,9,10 & 11)

Feb. 1983
to
May. 1987

HYDRAULIC MOTOR P/N 00751830 WING SECTION RH

S/N HY15-40186
to
S/N HY15-46045



Note: This Motor has an
Alum Housing and is
Cast domed shaped
as shown in drawing

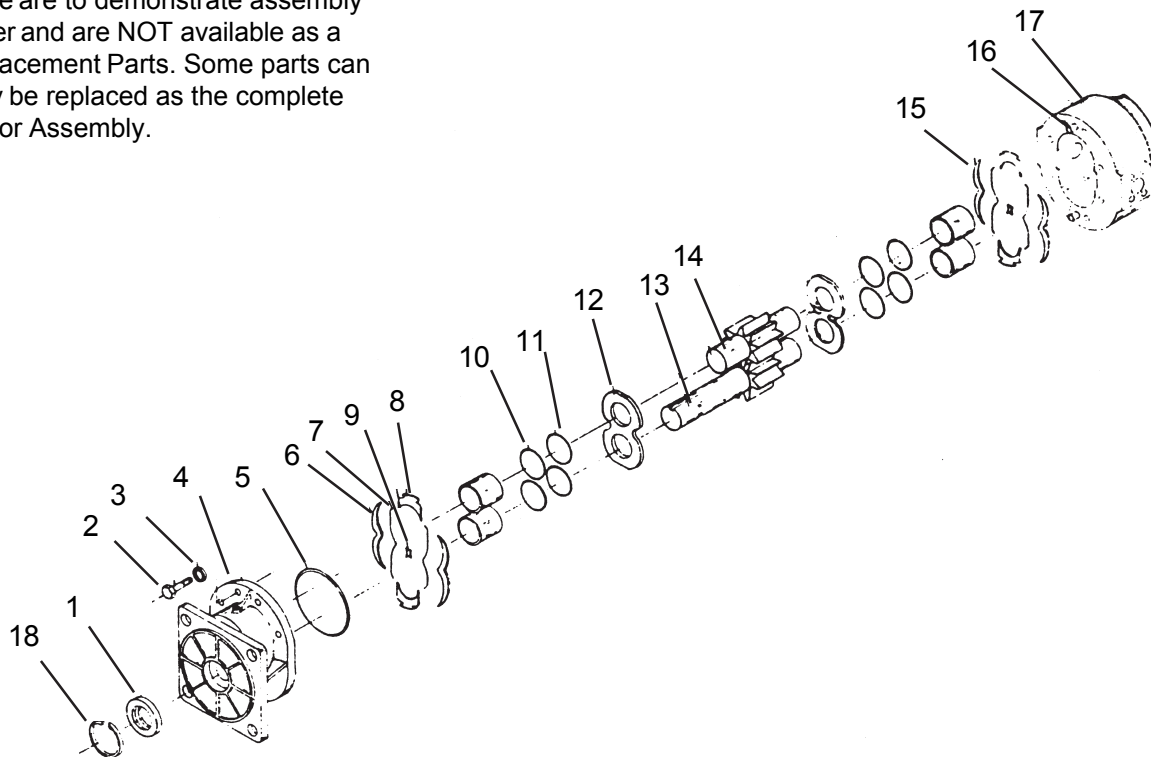
ITEM	PART NO	QTY	DESCRIPTION
1	00751830	1	Hydraulic Motor
2	00751485	2	"O"- Ring
3	00751486	1	"O"-Ring
4	00751785	1	Relief Manifold
5	00751874	1	Relief Manifold Set at 1500 PSI
5A	00753021	1	O-Ring Kit
6	00012101	4	Lockwasher
7	00059900	4	Bolt
8	63000500	4	Washer
9	02776600	4	Bolt
10	00749101	2	Split Flange Kit
11	00751842	2	Elbow
12	00751840	ref	Hose-1" - Junction to Motor
13	00751841	ref	Hose-1"- RH Wing to LH Wing Motor
14	00751494	ref	Hose - 3/8" Drain to deck
15	02724500	reff	Key
16	00751479	ref	Motor, Spindle,& Relief Valve Asy (items 1 Thru 11)

Feb. 1983
to
May 1987

HYDRAULIC MOTOR P/N 00751830 WING SECTION RH REPAIR PARTS

S/N HY15-40186
to
S/N HY15-46045

NOTE: Some parts Shown on this page are to demonstrate assembly order and are NOT available as a replacement Parts. Some parts can only be replaced as the complete Motor Assembly.

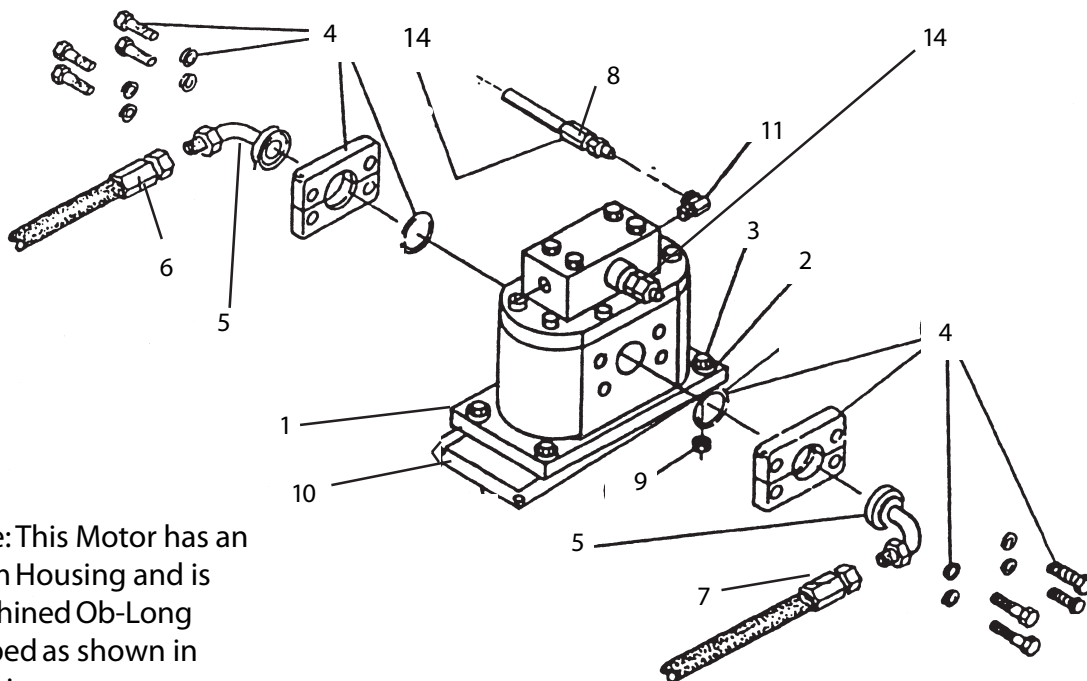


ITEM	PART NO	DESCRIPTION
1	_____	Seal
2	_____	Capscrew
3	_____	Washer
4	02721000	Flange
5	_____	"O" -Ring
6	02721500	Isolation Plate (Square Edge)
7	_____	Sealing Strip
8	_____	End Seperator
10	_____	U- Cup
11	_____	"O"- Ring
12	02721300	Pressure Plate
13	00752431	Drive Gear & Idler Set
15	02721400	Isolation Plate (Round Edge)
16	---N/A---	Dowel
17	---N/A---	Body
18	02721800	Snap Ring
	02720000	Seal Kit (items 1,5,7,8,9,10 & 11)
	A/R	

Jun. 1987
to
Sep. 1992

HYDRAULIC MOTOR P/N 00754113 WING SECTION RH

S/NHY15D-46046
to
S/NHY15E-01527



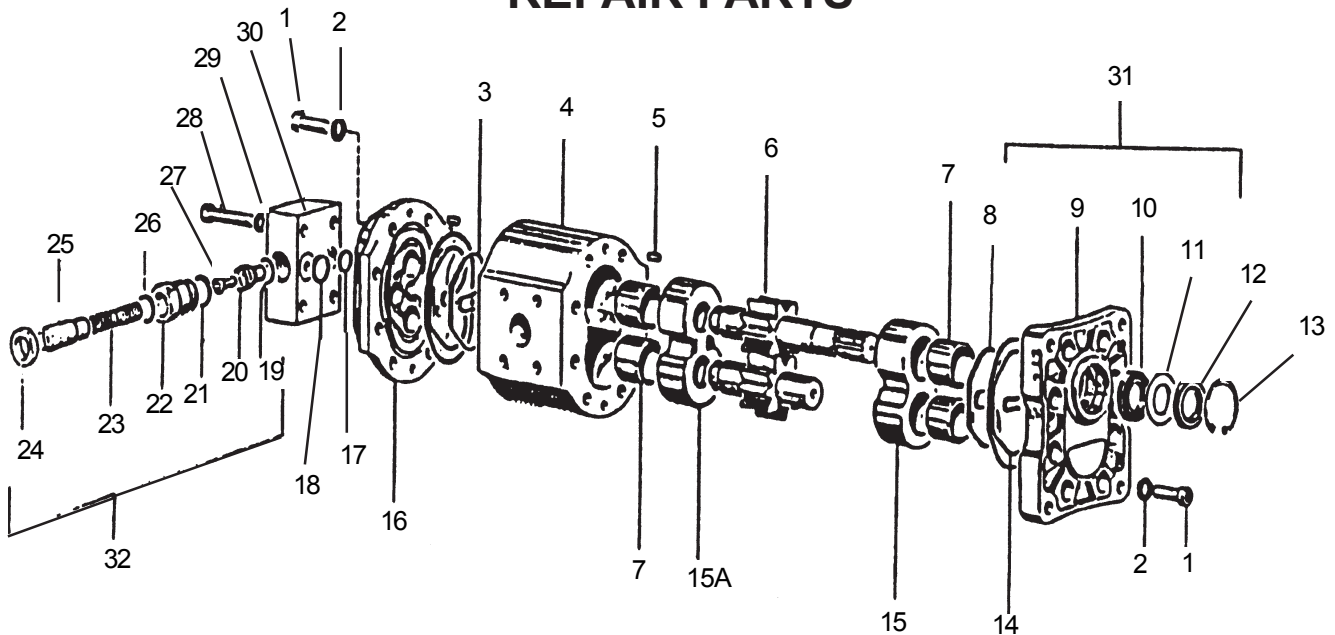
Note: This Motor has an Alum Housing and is machined Ob-Long shaped as shown in drawing

ITEM	PART NO	QTY	DESCRIPTION
1	00754113	1	Hydraulic Motor
2	63000500	4	Washer
3	02788400	4	Bolt
4	00749101	2	Split Flange Kit
5	00751842	2	Elbow
6	00751840	ref	Hose - 1" Junction to Motor (6/87 to 12/87)
	02959203	ref	Hose - 1" Junction to Motor (1/88 to 9/92)
7	00751840	ref	Hose - 1" RH Wing Motor to LH Wing Motor
8	00752256	ref	Hose - 3/8" Drain to Deck (6/87 to 12/87)
	00754794	ref	Hose - 3/8" Drain to Deck(1/88 to 9/92)
9	00001800	4	Locknut TLM 1/2 NC PLC
10	00754548	1	Gasket
11	00494800	1	Reducer
12	00755820	ref	Spindle Assembly (Not Shown)
13	00755812	ref	S pindle & Motor Assembly, (Not Shown)
14	00754620	ref	Relief Valve (Set at 1500 PSI)

Jun. 1987
to
Sep. 1992

HYDRAULIC MOTOR P/N 00754113 WING SECTION RH REPAIR PARTS

S/N HY15D-46046
to
S/N HY15E-01527

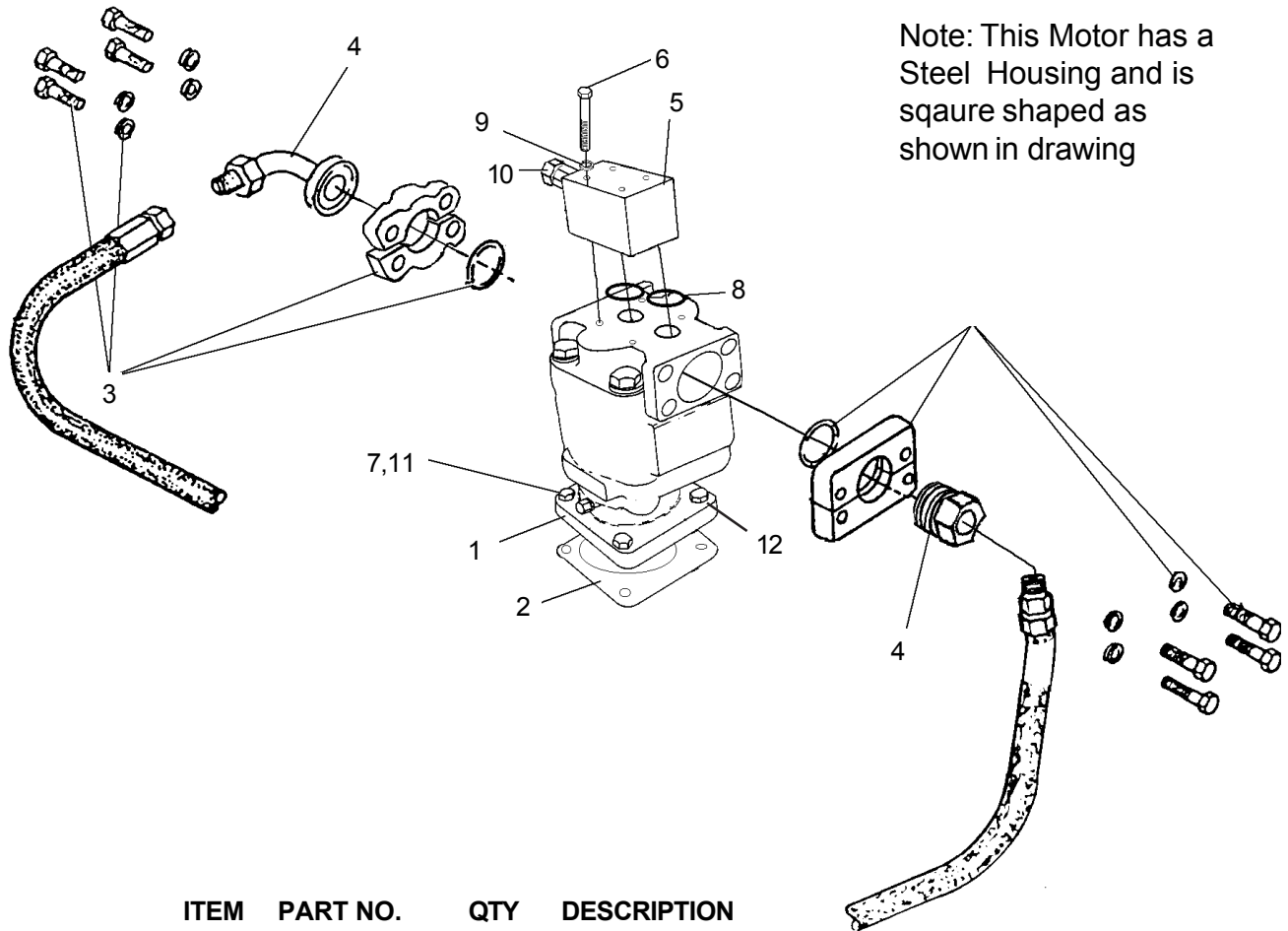


ITEM	PART NO	QTY	DESCRIPTION	ITEM	PART NO	QTY	DESCRIPTION
1	00754585	16	Bolt	22	00754608	1	Relief
2	00754586	16	Lockwash	23	00754609	1	Relief
3	00754552	2	Ring	24	00754610	1	Nut
4	00754588	1	Body	25	00754611	1	Relief
5	00754589	4	Dowel	26	00754612	1	O-Ring
6	00754590	1	Drive Gear	27	00754613	1	Relief
7	00754591	4	Bearing	28	00754614	4	Bolt
8	00754592	2	O-Ring	29	00754577	4	Lockwasher
9	00754593	1	Flange	30	00754615	1	Relief Manifold
10	00754595	1	Bearing	31	00754616	ref	Bottom Flange Assembly
11	00754596	1	Shim	32	00754620	ref	Relief Valve Kit (1500psi)
12	00754597	1	Seal		00754617	ref	Seal Kit
13	00754598	1	Snap Ring				
14	00754599	2	O-Ring				
15	00754600	1	Gear Housing				
15A	00754601	1	Gear Housing				
16	00754602	1	Body				
17	00754603	2	O-Ring				
18	00754604	1	O-Ring				
19	00754605	1	O-Ring				
20	00754606	1	Relief				
21	00754607	1	O-Ring				

Oct. 1992
to
May 2003

HYDRAULIC MOTOR P/N 00762686 WING SECTION RH

S/N HY15F-01528
to
S/N HY15F-02394

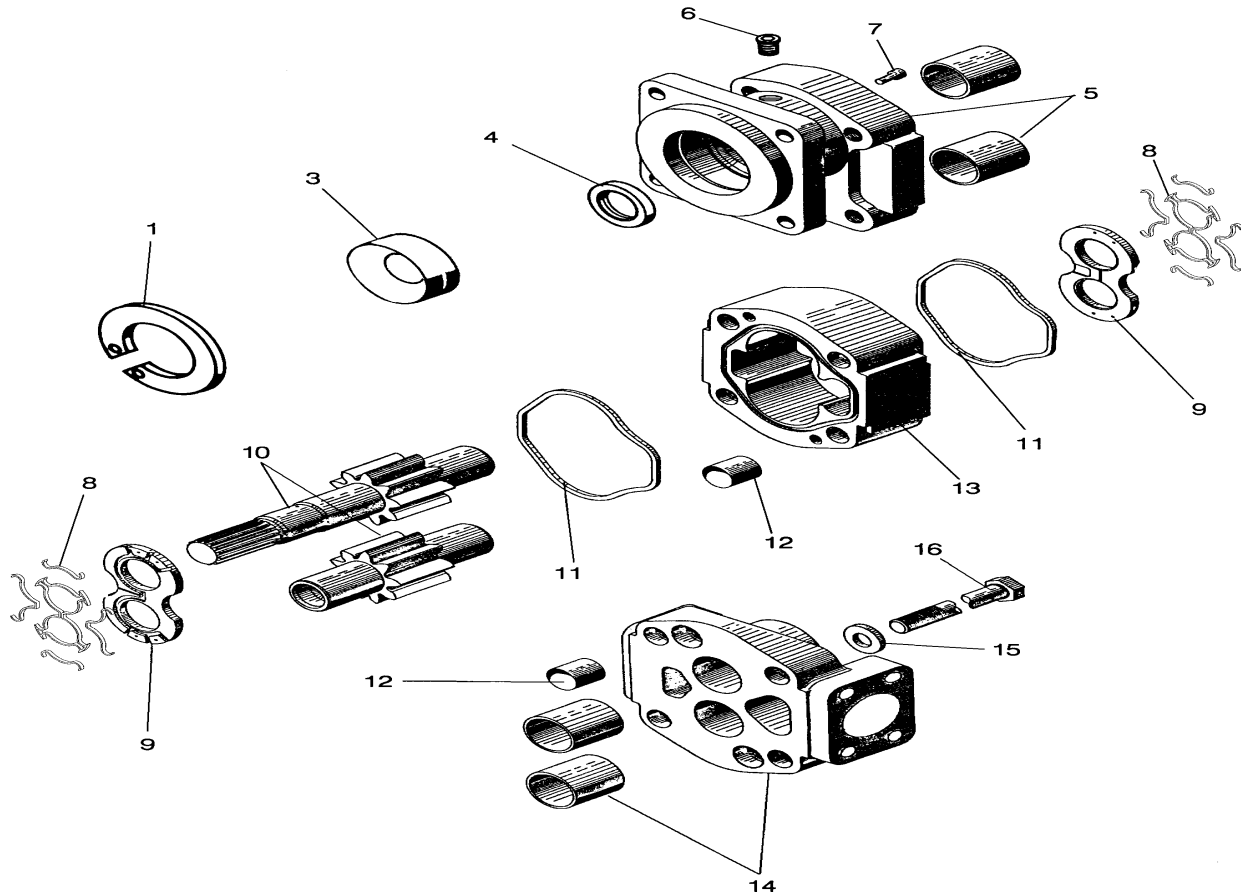


ITEM	PART NO.	QTY	DESCRIPTION
1	00762686	1	Motor
2	02961038	1	Gasket
3	00749101	2	Split Flange Kit
4	00751842	2	Elbow
5	00760886	1	Block
6	10074000	4	Bolt
7	02962181	2	Adapter, Straight
8	001695	2	O-Ring
9	00017000	4	Lockwasher
10	00751874	1	Relief Valve (Set at 1500 PSI)
11	02919600	2	Cap
12	02892000	4	Bolt
13	00762690	—	Motor, Soindle & Relief Assembly (item 1 thru 12 & 14)
14	02960553B	—	Spindle Assembly (Not Shown)

Oct. 1992
to
May 2003

HYDRAULIC MOTOR P/N 00762686 WING SECTION RH REPAIR PARTS

S/N HY15F-01528
to
S/N HY15F-02394

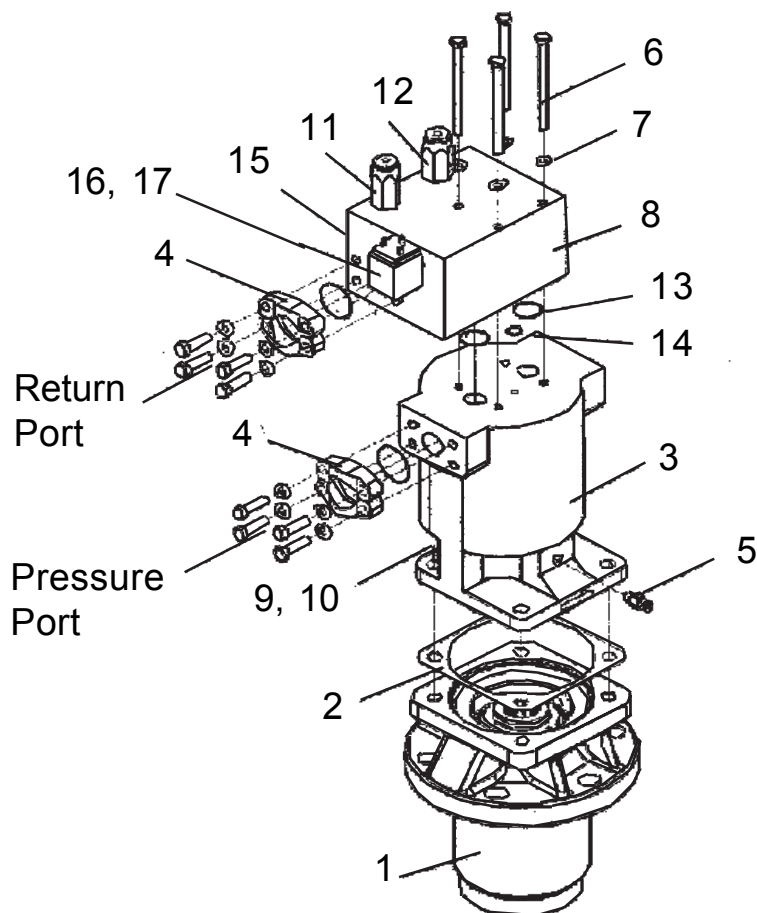


ITEM	PART NO.	QTY	DESCRIPTION
1	02962200	1	Snap Ring
3	00763767	1	Seal Retainer
4*	00763766	1	Seal
5	02962192	1	Mounting Flange w/Bushings
6	02961940	1	Plug
7	02961931	2	Check Assembly
8*	_____	4	Seal End
9	00763770	2	Thrust Plate
10	02962195	1	Gear Set
11*	_____	2	Square Seal
12	02962201	4	Dowel Pin
13	02962194	1	Gear Housing
14	00763840	1	Porting Flange w/Bushing
15	02962196	4	Washer
16	02962197	4	Bolt
17*	_____	4	Side Seal (Not Shown)
	00763765	1	Rebuild Seal Kit

Jun. 2003
to
Current

HYDRAULIC MOTOR P/N 02979416 WING SECTION RH

S/N HY15F-02395
to
S/N HY15F-Current

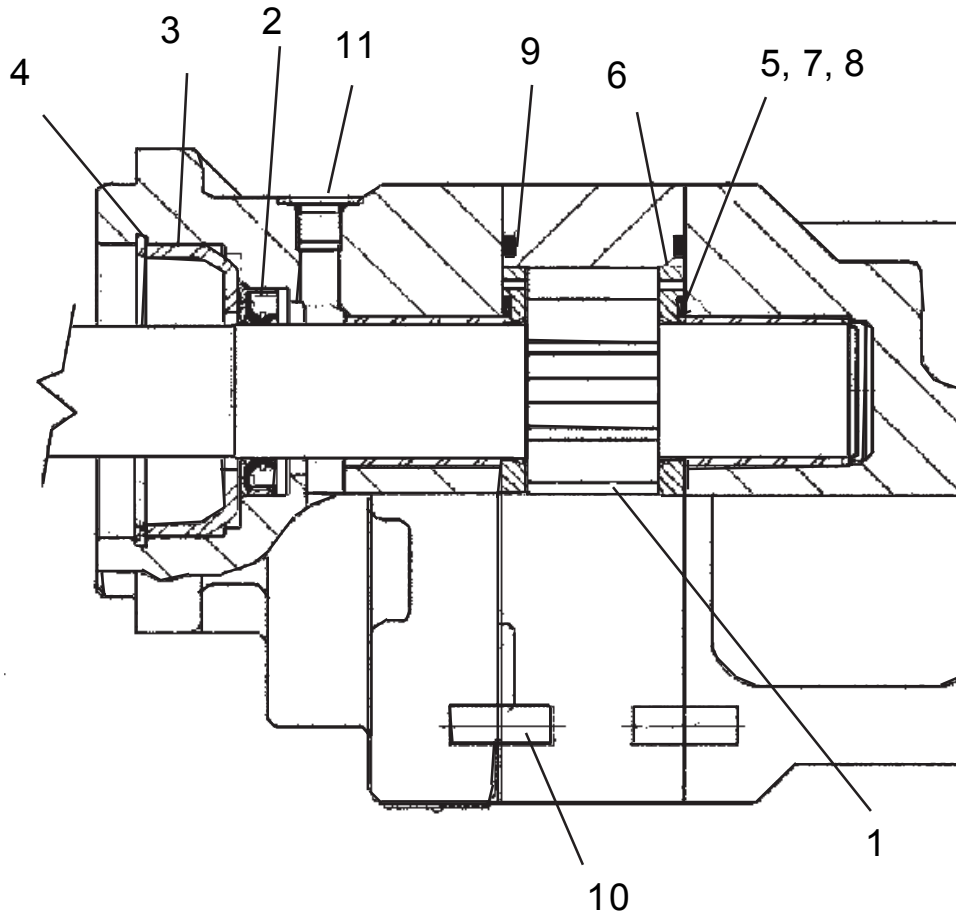


Item	Part No.	Qty	Description
	02979416	-	Right Wing Motor & Spindle Asy
1	02960553B	1	Assy, Spindle Housing Splined
2	02961038	1	Gasket
3	02978486	1	Right Wing Motor, Hydro 15
4	00750317	2	Split Flange Kit
5	02962181	1	Adapter, Hydraulic
6	02733700	4	HHCS
7	00011700	4	Lockwasher
8	02978489	1	Wing Motor Manifold Hydro 15
9	02892000	4	Bolt, 1/2 NC 1 1/2" LG
10	00001300	4	Lockwasher
11	02979492	Ref.	Relief Cartridge, Pilot, 800 PSI
12	02979491	Ref.	Relief Cartridge, Pilot, 2000 PSI
13	02979490	Ref.	O-Ring
14	02979489	Ref.	O-Ring
15	02979494	Ref.	Cartridge, Spool Type Logic
16	02979495	Ref.	Stem, SD, 3W2P
17	02979496	Ref.	Coil, 12 VDC, DIN 43650

Jun. 2003
To
Current

HYDRAULIC MOTOR P/N 02978486 WING SECTION RH REPAIR PARTS

S/N HY15F-02395
To
S/N HY15F-Current

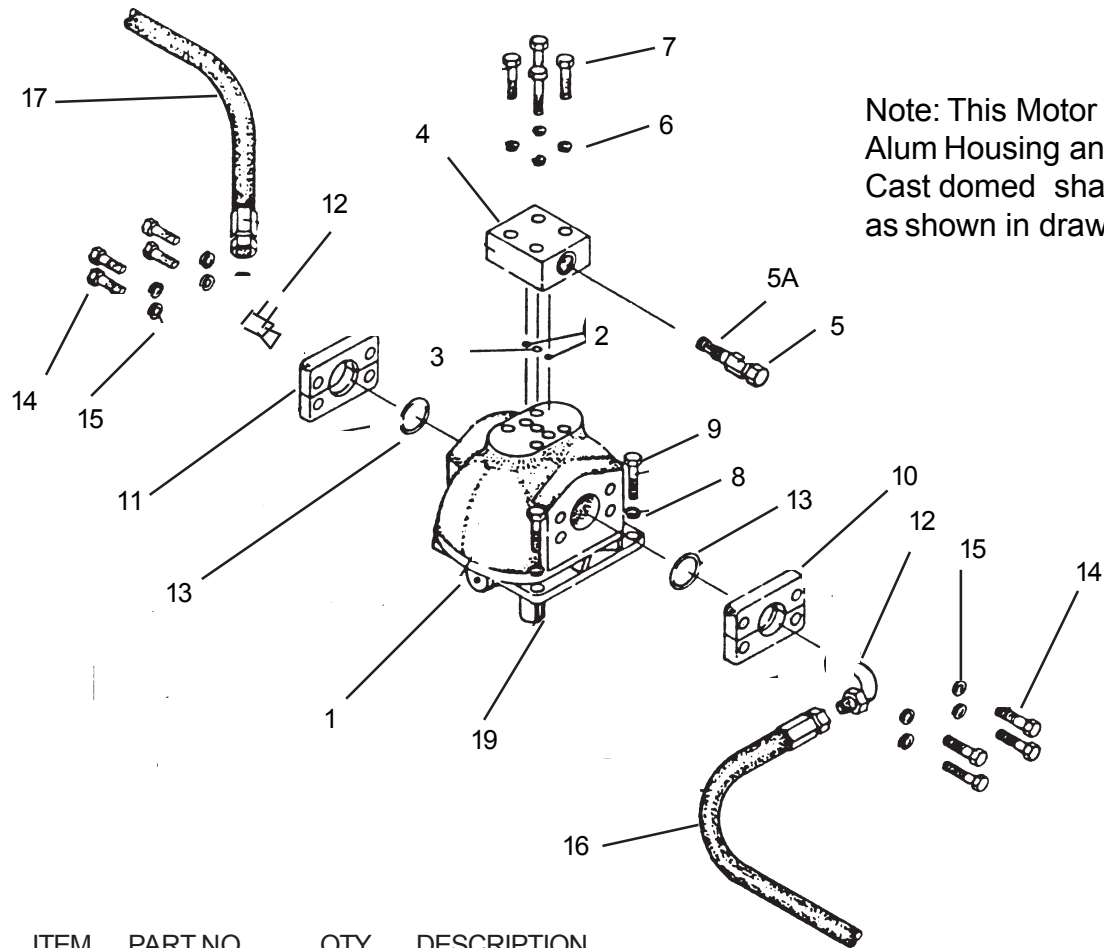


Item	Part No.	Qty	Description
	02978486	-	Motor - Right Wing
1	02979977	1	Set, Gear Shaft
2	02979969	1	Lip Seal
3	02979970	1	RTNR, Seal
4	02979971	1	Snap Ring
5	02979972	2	Seal, Backup
6	02979973	2	THRPL
7	02979974	4	Seal, End
8	02979975	4	Seal, Side
9	02979976	2	Seal, SQ-R
10	02979953	4	Pin, Dowel
11	02979967	1	Plug, ODT
12	02980330	1	Seal Kit

Mar. 1981
to
Jan. 1983

HYDRAULIC MOTOR P/N 00751482 WING SECTION LH

S/N HY15-38681
to
S/N HY15-40185



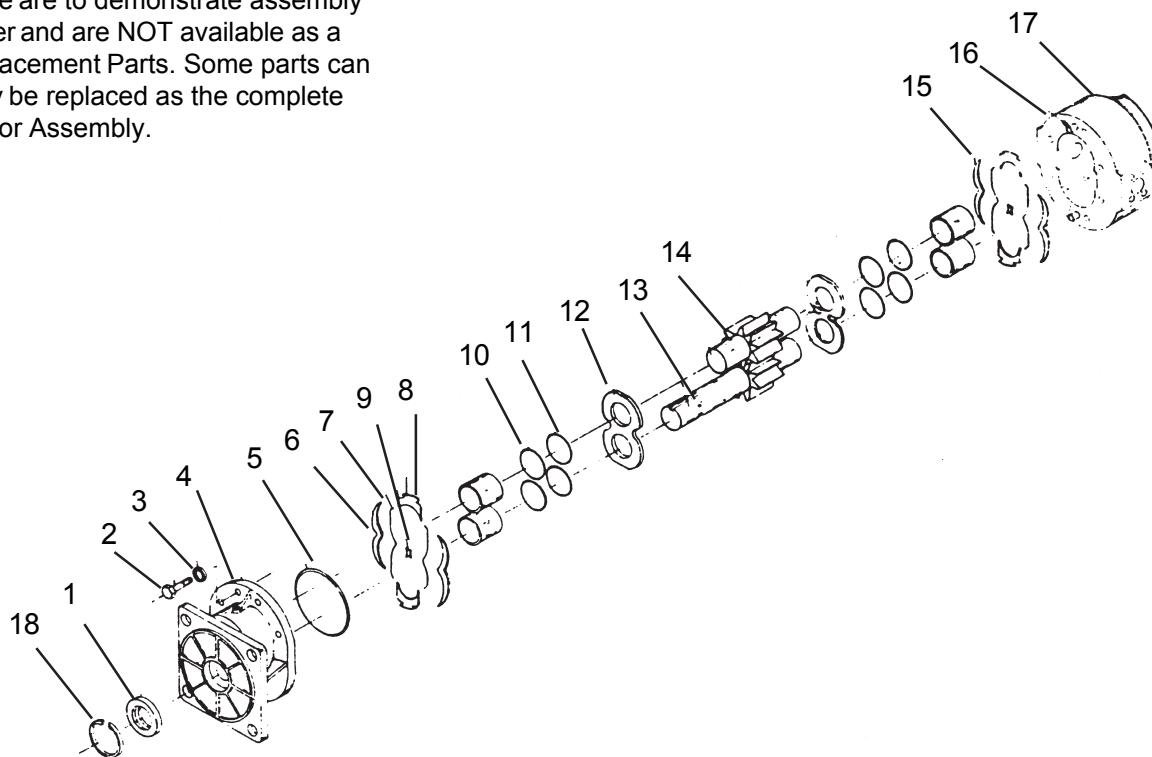
ITEM	PART NO.	QTY	DESCRIPTION
1	00751482	1	Hydraulic Motor
2	00751485	2	O-Ring
3	00751486	1	O-Ring
4	00751786	1	Relief Manifold
5	00751790	1	Relief Valve, W/Case drain, Set at 1500 PSI
5A	00753021	1	O-Ring Kit
6	00012101	4	Lockwasher
7	00059900	4	Bolt
8	63000500	4	Washer
9	02776600	4	Bolt
10	00751446	1	Adapter Plate - 3/4"
11	00751445	1	Adapter Plate - 1"
12	02041800	1	Elbow - 90
12A	00751489	1	Elbow - Street Elbow
13	02044400	2	O-Ring
14	02043800	8	Bolt, Socket Head
15	02043800	8	Lockwasher
16	00751493	ref	Hose - 3/4" - RH Wing Motor to LH Wing Motor
17	00751496	ref	Hose - 1" - LH Wing Motor to Deck
19	02724500	1	Key

Mar. 1981
to
Jan. 1983

HYDRAULIC MOTOR P/N 00751482 WING SECTION LH REPAIR PARTS

S/N HY15-38681
to
S/N HY15-40185

NOTE: Some parts Shown on this page are to demonstrate assembly order and are NOT available as a replacement Parts. Some parts can only be replaced as the complete Motor Assembly.

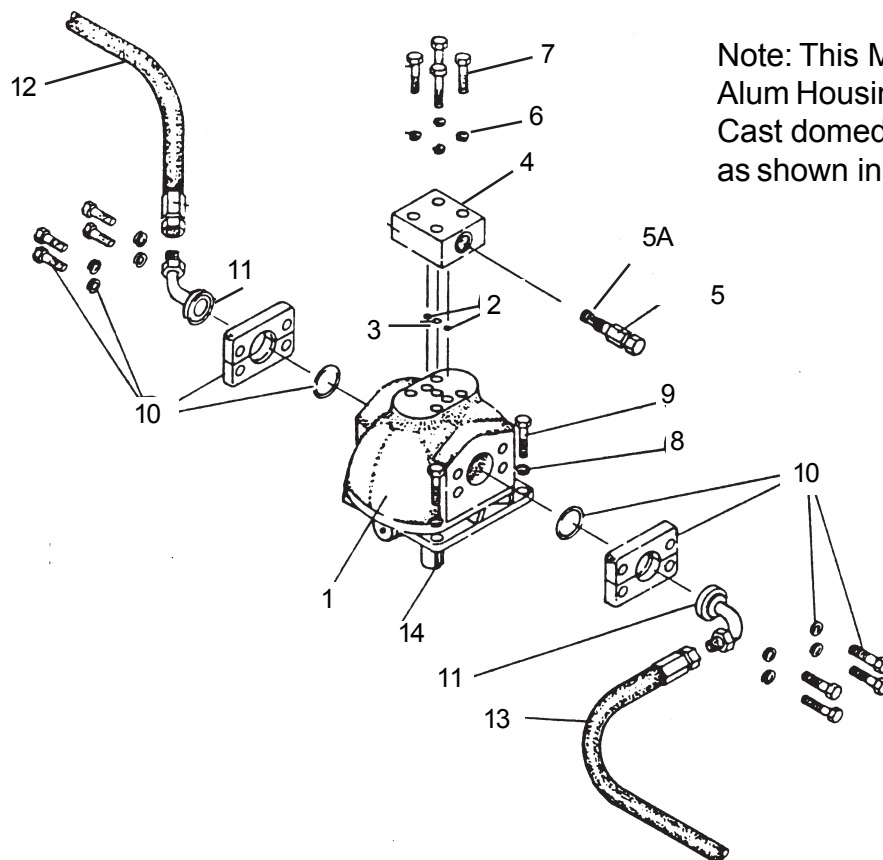


ITEM	PART NO	DESCRIPTION
1	_____	Seal
2	_____	Capscrew
3	_____	Washer
4	02721000	Flange
5	_____	"O" -Ring
6	02721500	Isolation Plate (Square Edge)
7	_____	Sealing Strip
8	_____	End Seperator
10	_____	U- Cup
11	_____	"O"- Ring
12	02721300	Pressure Plate
13	00752431	Drive Gear & Idler Set
15	02721400	Isolation Plate (Round Edge)
16	---N/A---	Dowel
17	---N/A---	Body
18	02721800	Snap Ring
	02720000	A/R Seal Kit (items 1,5,7,8,9,10 & 11)

Feb. 1983
to
May 1987

HYDRAULIC MOTOR P/N 00751830 WING SECTION LH

S/N HY15-40186
to
S/N HY15-46045



Note: This Motor has an Alum Housing and is Cast domed shaped as shown in drawing

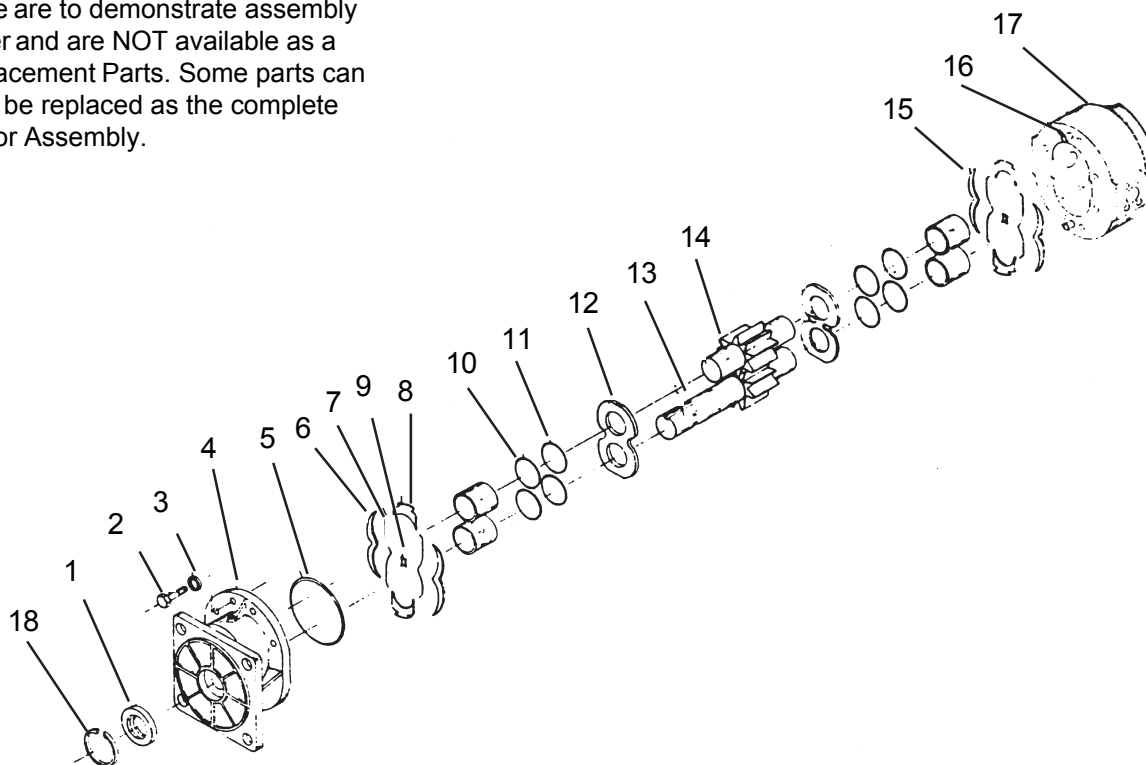
ITEM	PART NO	QTY	DESCRIPTION
1	00751830	1	Hydraulic Motor
2	00751485	2	"O"- Ring
3	00751486	1	"O"-Ring
4	00751786	1	Relief Manifold
5	00751874	1	Relief Manifold Set at 1500 PSI
5A	00753021	1	O-Ring Kit
6	00012101	4	Lockwasher
7	00059900	4	Bolt
8	63000500	4	Washer
9	02776600	4	Bolt
10	00749101	2	Split Flange Kit
11	00751842	2	Elbow
12	00751841	ref	Hose-1" - LH Wing MotorTo RH Wing Motor
13	00751843	ref	Hose-1" - LH Wing Motor to Deck
14	02724500	reff	Key
15	00751481	-	Motor, Spindle & Relief Valve Assembly (items 1 thru 11 & 16)
16	00751759	-	Spindle Housing Assembly (Not Shown)

Feb. 1983
to
May 1987

HYDRAULIC MOTOR P/N 00751830 WING SECTION LH REPAIR PARTS

S/N HY15-40186
to
S/N HY15-46045

NOTE: Some parts Shown on this page are to demonstrate assembly order and are NOT available as a replacement Parts. Some parts can only be replaced as the complete Motor Assembly.

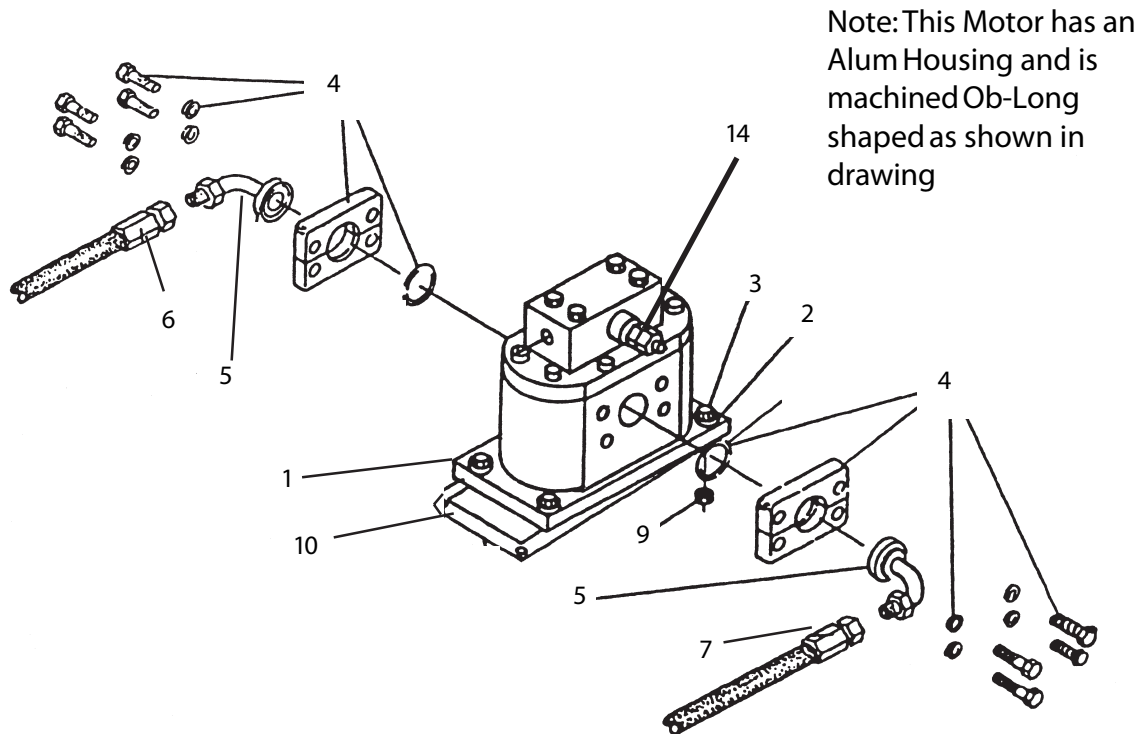


ITEM	PART NO	DESCRIPTION
1	_____	Seal
2	_____	Capscrew
3	_____	Washer
4	02721000	Flange
5	_____	"O" -Ring
6	02721500	Isolation Plate (Square Edge)
7	_____	Sealing Strip
8	_____	End Seperator
10	_____	U- Cup
11	_____	"O"- Ring
12	02721300	Pressure Plate
13	00752431	Drive Gear & Idler Set
15	02721400	Isolation Plate (Round Edge)
16	---N/A---	Dowel
17	---N/A---	Body
18	02721800	Snap Ring
	02720000	A/R Seal Kit (items 1,5,7,8,9,10 & 11)

Jun. 1987
to
Sep. 1992

HYDRAULIC MOTOR P/N 00754114 WING SECTION LH

S/NHY15D-46046
to
S/NHY15E-01527

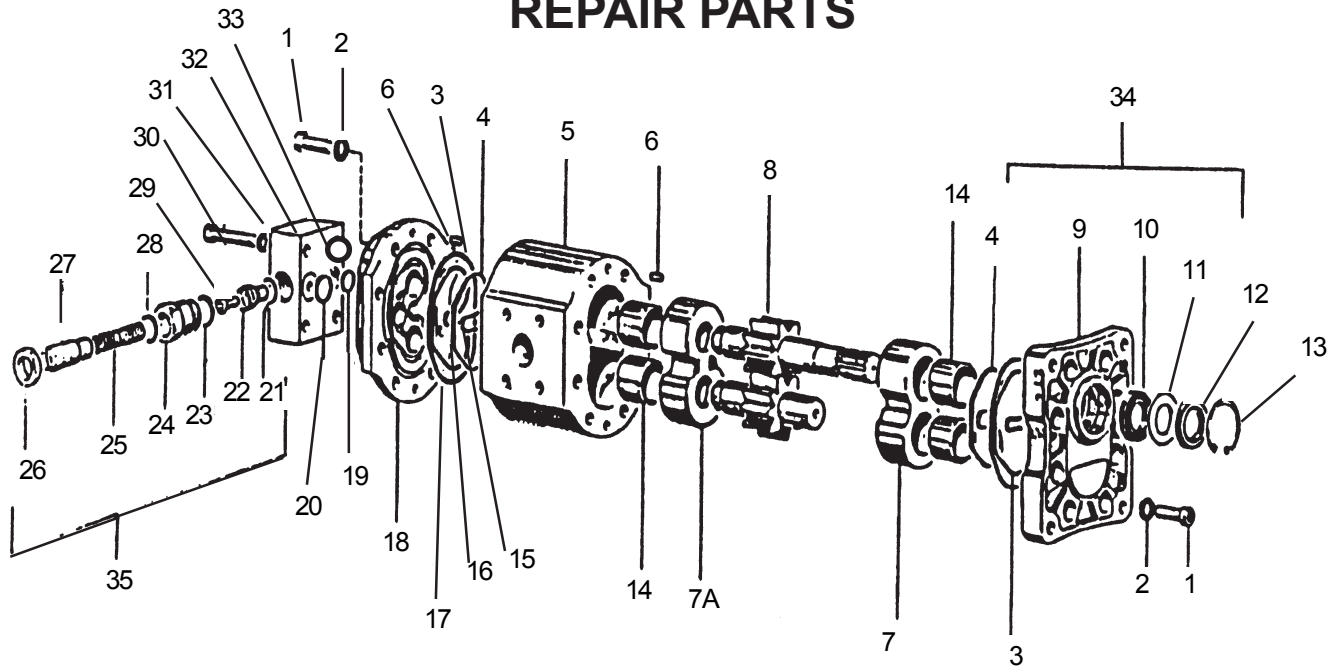


ITEM	PART NO	QTY	DESCRIPTION
1	00754114	1	Hydraulic Motor
2	63000500	4	Washer
3	02788400	4	Bolt
4	00749101	2	Split Flange Kit
5	00751842	2	Elbow
6	00751840	ref	Hose - 1" Junction to Motor
7	00751840	ref	Hose - 1" LH Wing Motor to RH Wing Motor (6/87 to 12/87)
	02751300	ref	Hose - 1" LH Wing Motor to RH Wing Motor (1/88 to 9/92)
9	00001800	4	Locknut TLM 1/2 NC PLC
10	00754548	1	Gasket
12	00755820	ref	Spindle Assembly (Not Shown)
13	00755814	ref	S pindle & Motor Assembly, (Not Shown)
14	00754620	ref	Relief Valve (Set at 1500 PSI)

Jun. 1987
to
Sep. 1992

HYDRAULIC MOTOR P/N 00754114 WING SECTION LH REPAIR PARTS

S/N HY15D-46046
to
S/N HY15E-01527

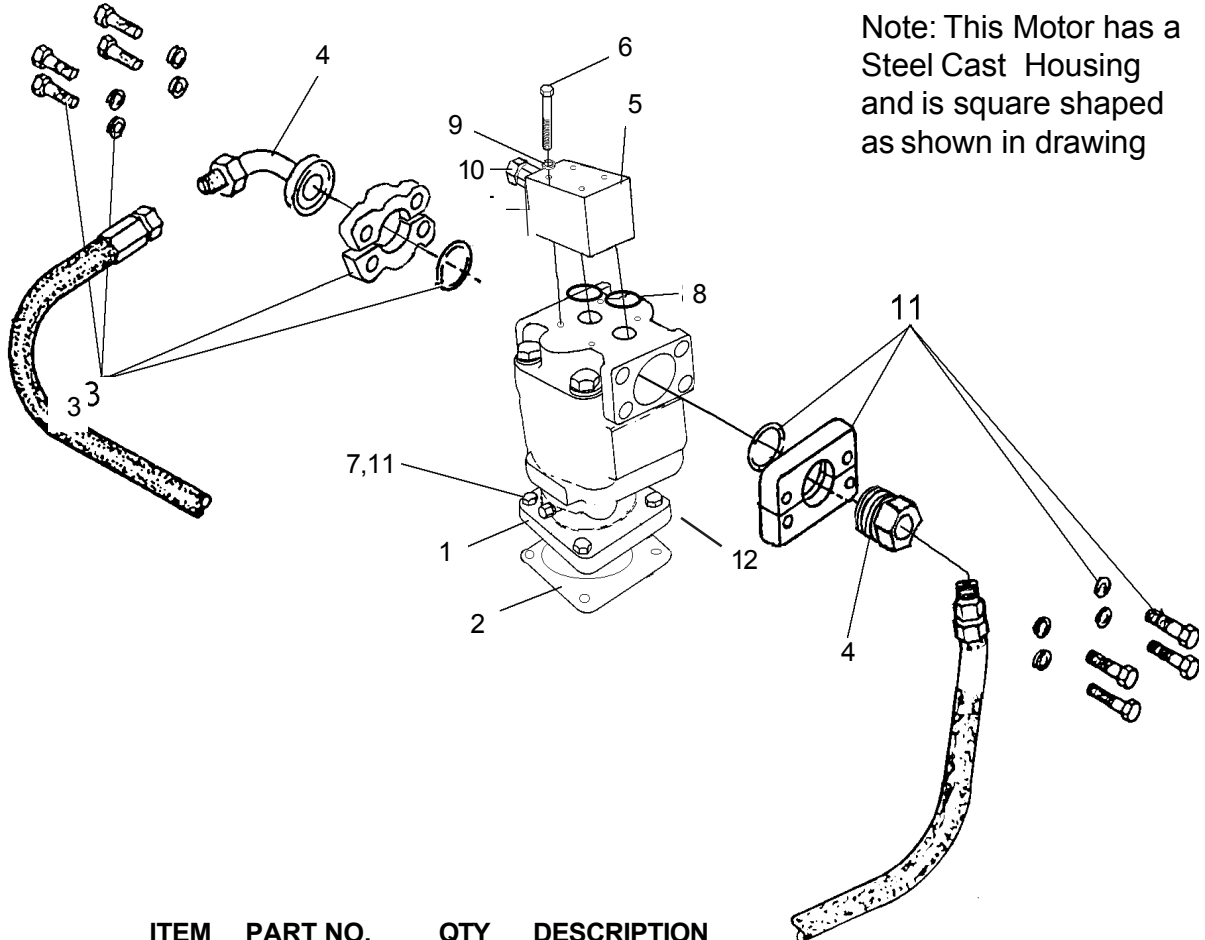


ITEM	PART NO	QTY	DESCRIPTION	ITEM	PART NO	QTY	DESCRIPTION
1	00754585	16	Bolt	24	00754608	1	Relief
2	00754594	16	Lockwash	25	00754609	1	Relief
3	00754641	2	Ring	26	00754610	1	Nut
4	00754641	2	Ring	27	00754611	1	Relief
5	00754587	1	Body	28	00754612	1	O-Ring
6	00754589	4	Dowel	29	00754613	1	Relief
7	00754642	1	Gear Housing	30	00754614	4	Bolt
7A	00754643	1	Gear Housing	31	00754577	4	Lockwasher
8	00754590	1	Drive Gear	32	00754648	1	Relief Manifold
9	00754644	1	Flange	33	00754649	1	O-Ring
10	00754595	1	Bearing	34	00754623	ref	Bottom Flange Assembly
11	00754596	1	Shim	35	00754620	ref	Relief Valve Kit (1500 PSI)
12	00754597	1	Seal	36	00754617	ref	Seal Kit
13	00754598	1	Snap Ring				
14	00754591	4	Bearing				
15	00754552	4	Ring				
16	00754645	2	O-Ring				
17	00754646	4	O-Ring				
18	00754647	1	Body				
19	00754603	2	O-Ring				
20	00754604	1	O-Ring				
21	00754605	1	O-Ring				
22	00754606	1	Relief				
23	00754607	1	O-Ring				

Oct. 1992
to
Current

HYDRAULIC MOTOR P/N 00762686 WING SECTION LH

S/N HY15F-01528
to
S/N HY15F-Current

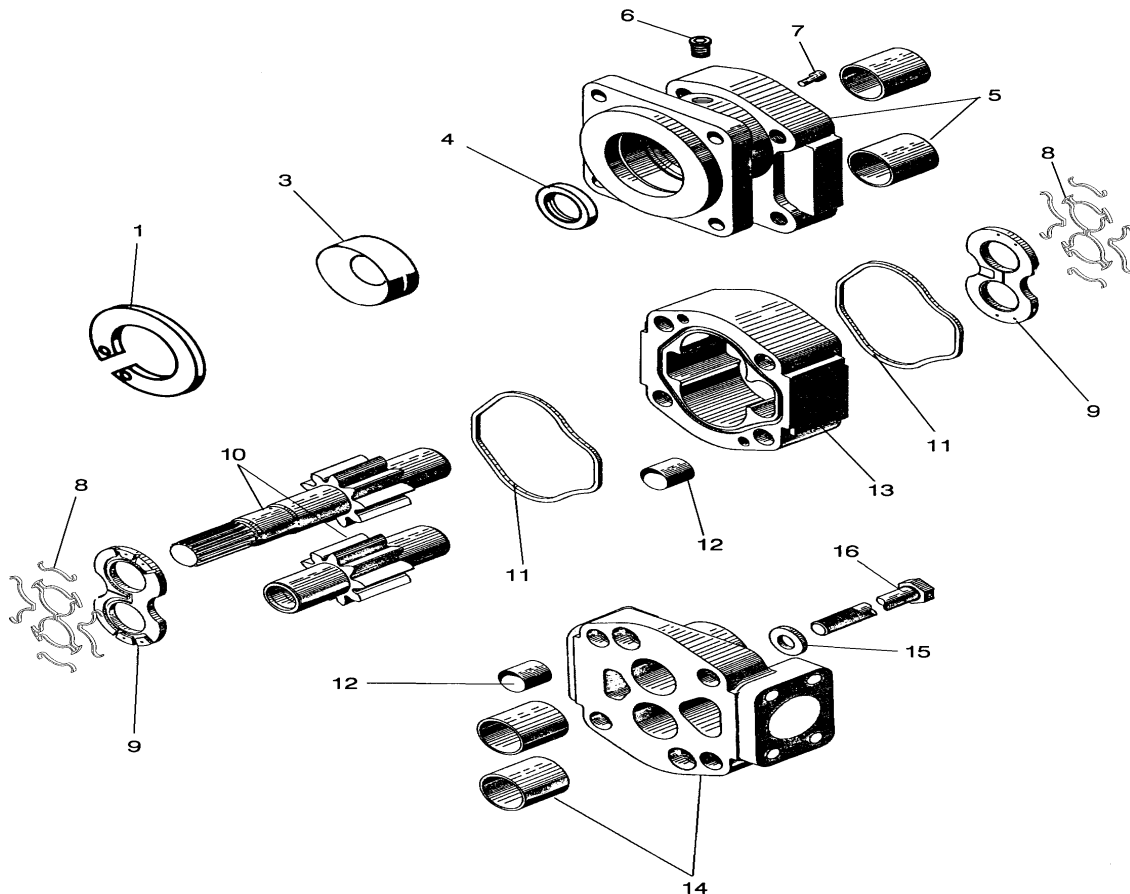


ITEM	PART NO.	QTY	DESCRIPTION
1	00762686	1	Motor
2	02961038	1	Gasket
3	00749101	2	Split Flange Kit
4	00751842	2	Elbow
5	00760886	1	Block
6	10074000	4	Bolt
7	02961940	1	Plug
8	001695	2	O-Ring
9	00017000	4	Lockwasher
10	00751874	1	Relief Valve (Set 1500 PSI)
11	02919600	2	Cap
12	02892000	4	Bolt
13	00762691	—	Motor, Soindle & Relief Assembly (item 1 thru 12 & 14)
14	02960553B	—	Spindle Assembly (Not Shown)

Oct. 1992
to
Current

HYDRAULIC MOTOR P/N 00762686 WING SECTION LH REPAIR PARTS

S/N HY15F-01528
to
S/N HY15F-Current

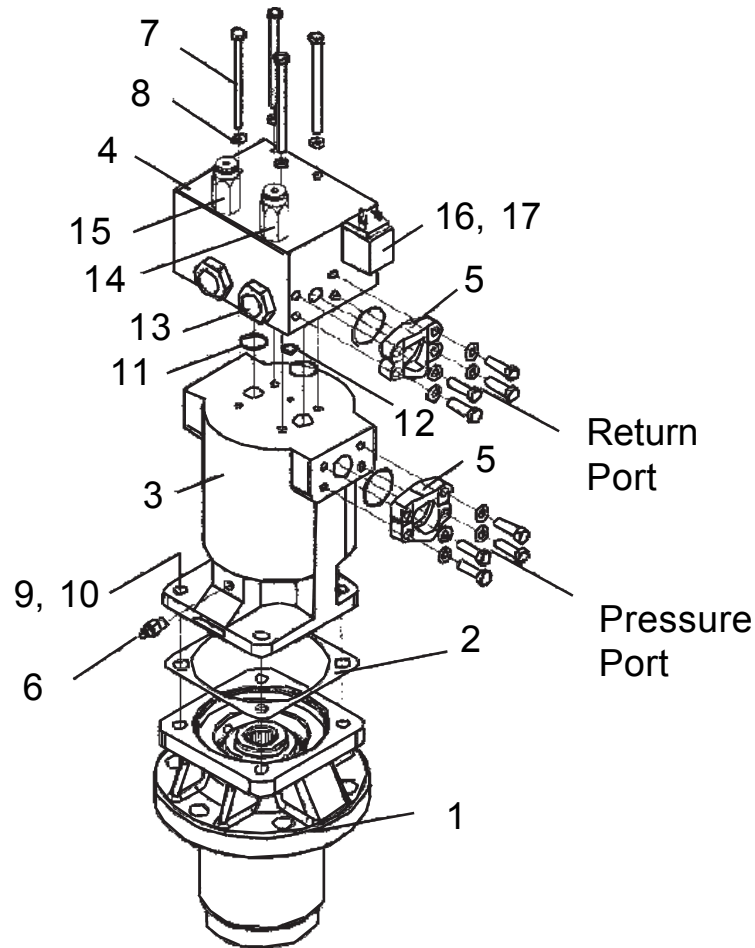


ITEM	PART NO.	QTY	DESCRIPTION
1	02962200	1	Snap Ring
3	00763767	1	Seal Retainer
4*	00763766	1	Seal
5	02962192	1	Mounting Flange w/Bushings
6	02961940	1	Plug
7	02961931	2	Check Assembly
8*	-----	4	Seal End
9	00763770	2	Thrust Plate
10	02962195	1	Gear Set
11*	-----	2	Square Seal
12	02962201	4	Dowel Pin
13	02962194	1	Gear Housing
14	00763840	1	Porting Flange w/Bushing
15	02962196	4	Washer
16	02962197	4	Bolt
17*	-----	4	Side Seal (Not Shown)
	00763765	1	Rebuild Seal Kit*

Jun. 2003
to
Current

HYDRAULIC MOTOR P/N 02979417 WING SECTION RH

S/N HY15F-02395
to
S/N HY15F-Current

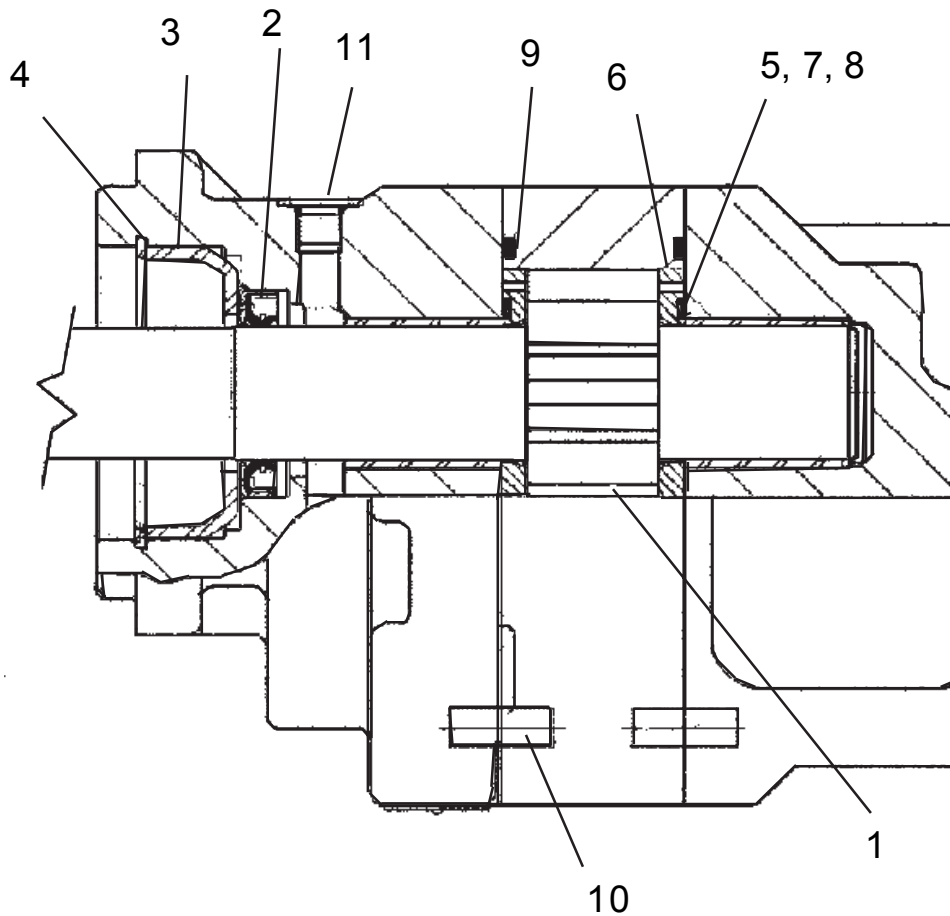


Item	Part No.	Qty	Description
	02979417	-	Left Wing Motor & Spindle Assy
1	02960553B	1	Assy, Spindle Housing Splined
2	02961038	1	Gasket
3	02978487	1	Left Wing Motor, Hydro 15
4	02978489	1	Wing Motor Manifold Hydro 15
5	00750317	2	Split Flange Kit
6	02962181	1	Adapter, Hydraulic
7	02733700	4	HHCS
8	00011700	4	Lockwasher
9	02892000	4	Bolt, 1/2 NC 1 1/2" LG
10	00001300	4	Lockwasher
11	02979490	Ref.	O-Ring
12	02979489	Ref.	O-Ring
13	02979494	Ref.	Cartridge, Spool Type Logic
14	02979492	Ref.	Relief Cartridge, Pilot, 800 PSI
15	02979491	Ref.	Relief Cartridge, Pilot, 2000 PSI
16	02979495	Ref.	Stem, SD, 3W2P
17	02979496	Ref.	Coil, 12 VDC, DIN 43650

Jun. 2003
To
Current

HYDRAULIC MOTOR P/N 02978487 WING SECTION LH REPAIR PARTS

S/N HY15F-02395
To
S/N HY15F-Current

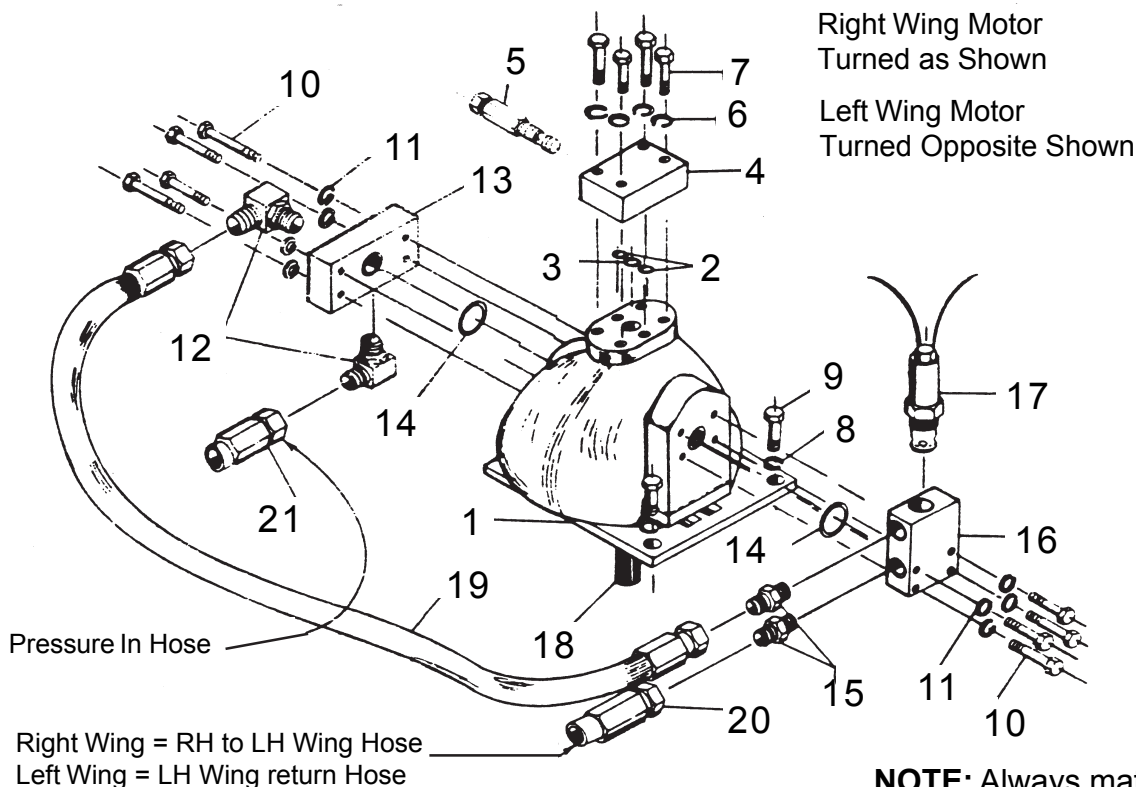


Item	Part No.	Qty	Description
	02978487	-	Motor - Right Wing
1	02979977	1	Set, Gear Shaft
2	02979969	1	Lip Seal
3	02979970	1	RTNR, Seal
4	02979971	1	Snap Ring
5	02979972	2	Seal, Backup
6	02979973	2	THRPL
7	02979974	4	Seal, End
8	02979975	4	Seal, Side
9	02979976	2	Seal, SQ-R
10	02979953	4	Pin, Dowel
11	02979967	1	Plug, ODT
12	02980330	1	Seal Kit

Feb. 1986
to
May 1987

HYDRAULIC MOTOR LH & RH WING SHUT-OFF (OPTIONAL)

S/N HY15-44406
to
S/N HY15-46045



NOTE: Always match
Shut Off kits to Motors,
Check Motor part
numbers and motor
shapes.

ITEM	PART NO	QTY	DESCRIPTION
1	00751830	1	Hydraulic Motor
2	00751485	2	O-Ring
3	00751486	1	O-Ring
4	00751785	1	Relief Manifold
5	00751874	1	Relief Valve (Set at 1500 PSI)
6	00012101	4	Lockwasher
7	00059900	4	Bolt
8	63000500	4	Washer
9	02776600	4	Bolt
10	00752776	8	Bolt
11	00001300	8	Lockwasher
12	02096900	2	Elbow
13	00752625	1	Flange Adapter Plate
14	02957617	2	O-Ring
15	02957622	2	Adapter, Straight
16	00752620	1	Valve Manifold
17	00752620	1	Solenoid Valve
18	02724500	1	Key
19	00752717	1	Hose
20	00751497	REF	Hose
21	00751845	REF	Hose

SHUT OFF KITS

Kits include Parts for 1 Mower

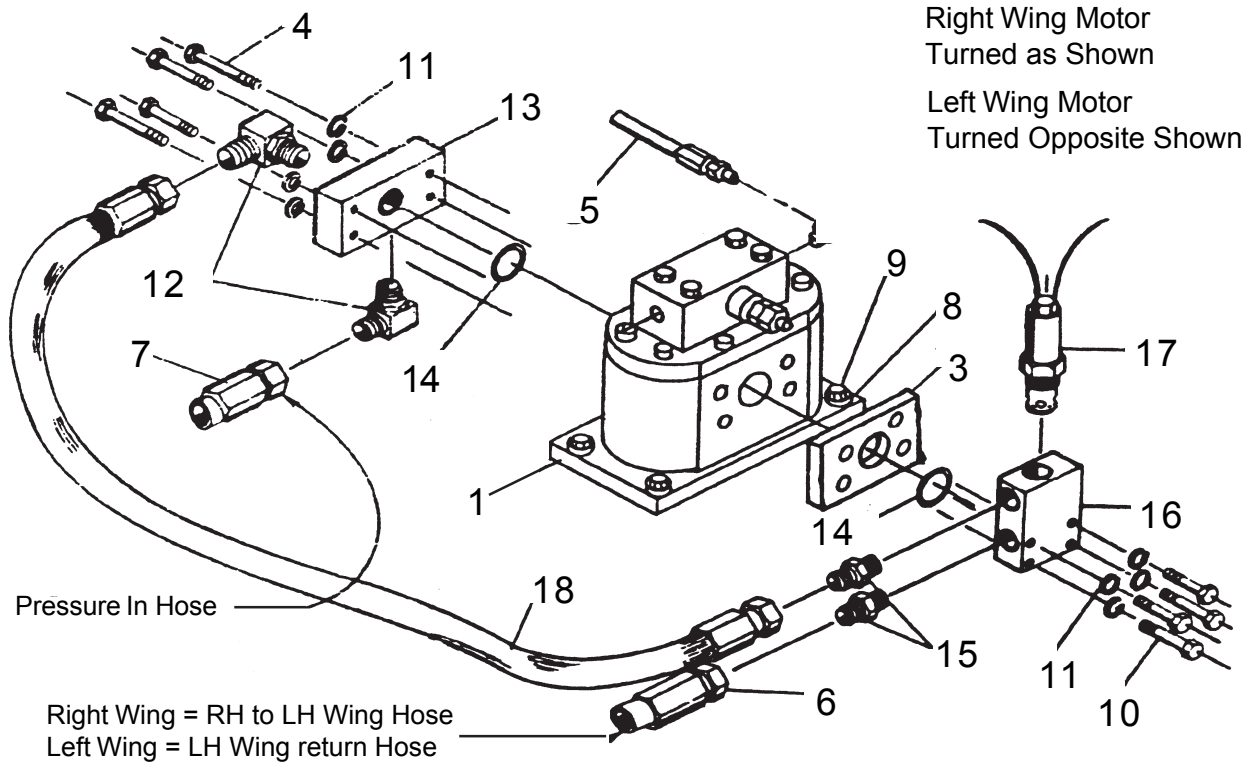
HY15 - L & R Wing	#00752617
HY10 - L-Wing Only	#00752802
HY10 - R-Wing Only	#00752803

NOTE: Some Items listed are used on Motor Assembly and are not replaced when Shut Off Kit is installed.
Kits Listed above MAY NOT have same parts as listed above as they will be replacement Kits.

Jun. 1987
to
Jun. 1995

HYDRAULIC MOTOR LH & RH WING SHUT-OFF (OPTIONAL)

S/N HY15D-46046
to
S/N HY15F-01833



NOTE: Always match
Shut Off kits to Motors,
Check Motor part
numbers and motor
shapes.

ITEM	PART NO	QTY	DESCRIPTION
1	00754113	—	Motor, RH Wing (Shown)
	00754114	—	Motor, LH Wing (Not Shown)
3	00754864	1	Spacer Block
4	00752716	4	Bolt
5	————	ref	Hose, Return LH Wing or Wing to Wing
6	————	ref	Hose, Case Drain (RH Wing Only)
7	————	ref	Hose, Pressure Supply
8	63000500	4	Washer
9	00754517	4	Bolt
10	00754865	4	Bolt
11	00001300	8	Lockwasher
12	02090900	2	Adjustable Elbow
13	00752625	1	Flange Adapter Tee
14	02957617	3	O-Ring
15	02957622	2	Straight Adapter
16	00752620	1	Valve Manifold
17	02957615	1	Solenoid Valve
	02963691	1	Coil
	02963692	1	Seal Kit
	02963693	1	Valve
18	00752717	1	Hose

SHUT OFF KITS

Kits include Parts for 1 Mower

HY15 - L & R Wing #00754866

HY10 - L-Wing Only #00754868

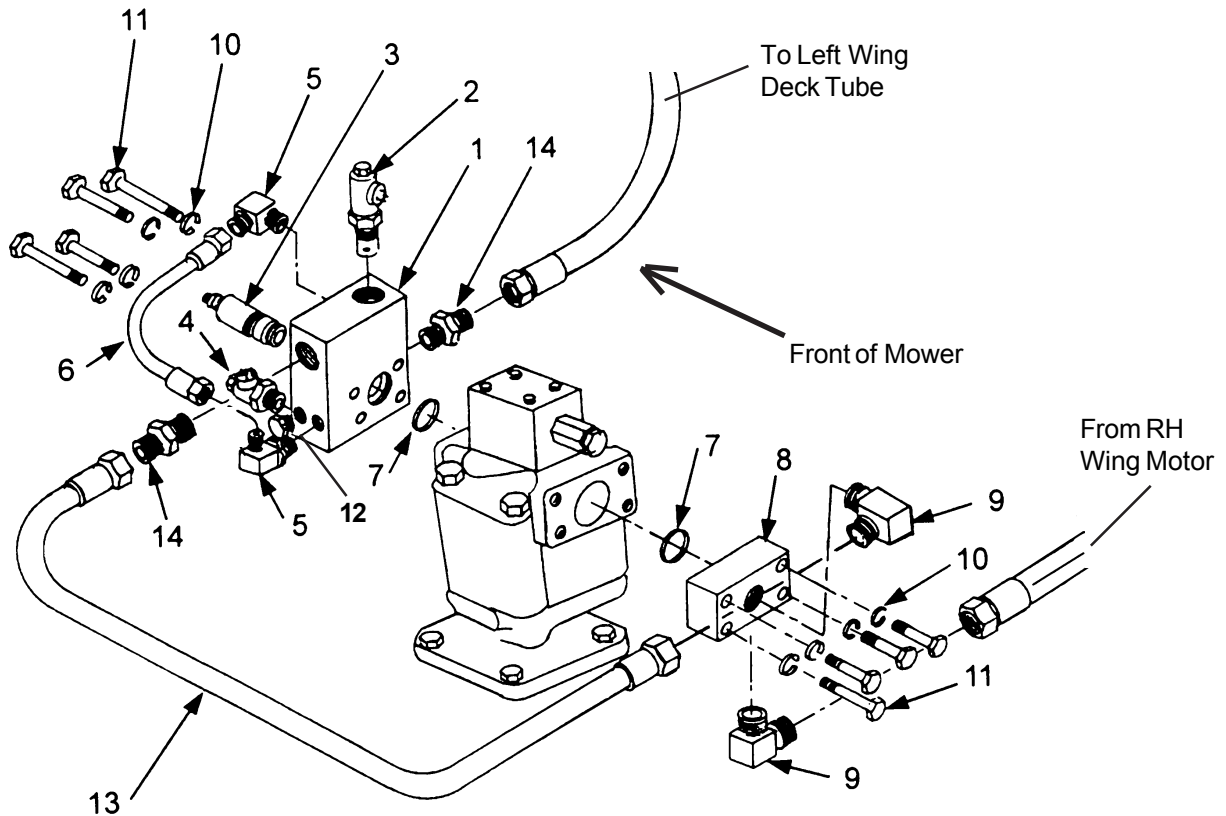
HY10 - R-Wing Only #00754867

NOTE: Some Items listed are used on Motor Assembly and are not replaced when Shut Off Kit is installed.
Kits Listed above MAY NOT have same parts as listed above as they will be replacement Kits.

Jul. 1995
to
Current

HYDRAULIC MOTOR LH WING SHUT-OFF (OPTIONAL)

S/N HY15F-01834
to
S/N HY15F-Current



LEFT WING Kit Shown This Page

NOTE: Always match
Shut Off kits to Motors,
Check Motor part
numbers and motor
shapes.

ITEM	PART NO.	QTY	DESCRIPTION
1	02967079	1	Mainfold Block
2	002502	1	Solenoid Valve
3	02967241	1	Relief Valve
4	02967242	1	Solenoid Valve
5	02960018	2	Adapter 4MB- 4MJ 90 Degree
6	00769510	1	Hose
7	02957617	2	" O " Ring
8	00752625	1	Adapter Tee
9	02090900	2	Adapter 90 Degree 16MB- 16MJ
10	00001300	8	Lockwasher
11	00752716	8	Bolt
12	00769511	1	Plug #4MB
13	00752717	1	Hose
14	02957622	2	Adaptor #16MB-16MJ

SHUT OFF KITS

Kits include Parts for 1 Mower

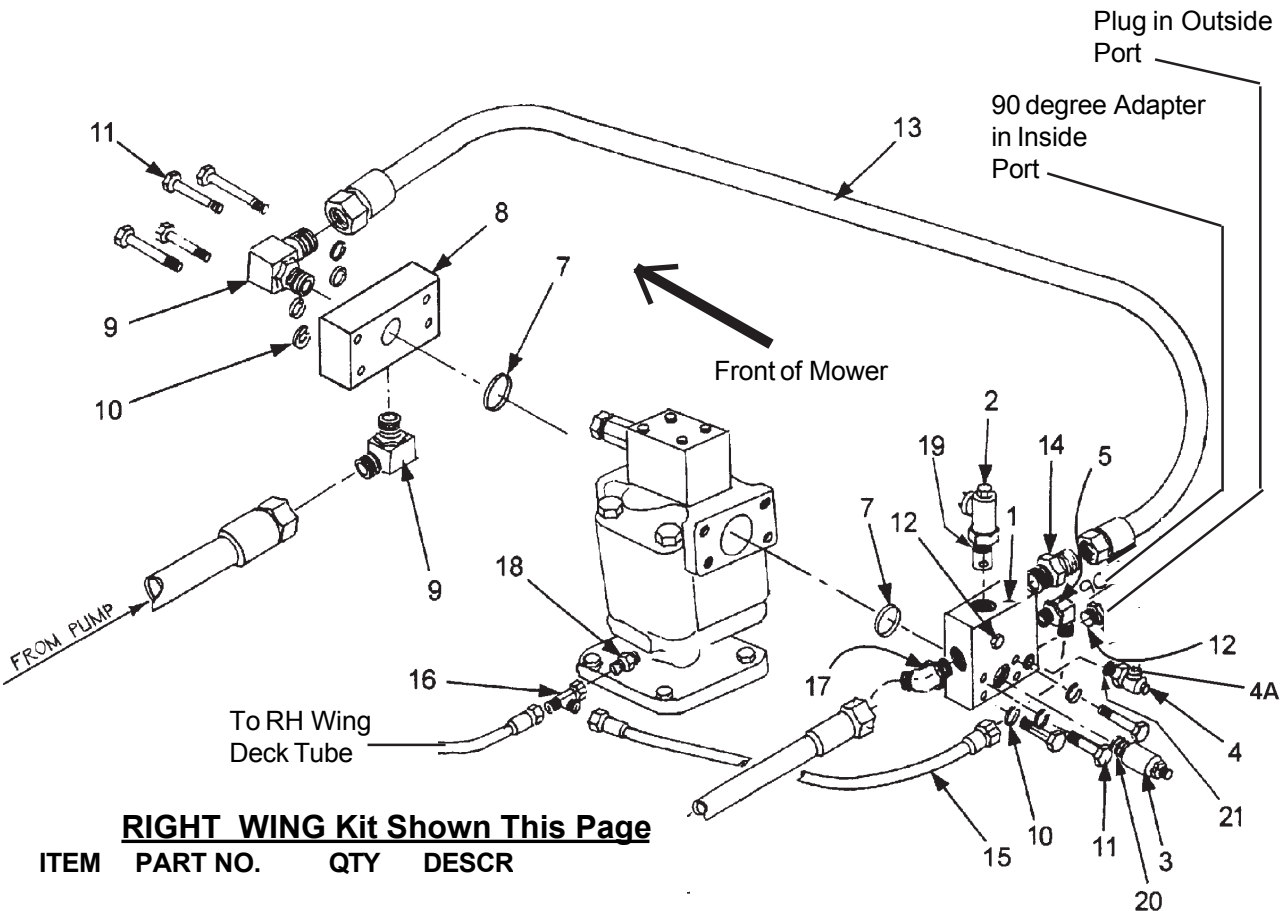
HY15 - L & R Wing	#00769512
HY10 - L-Wing Only	#00773635
HY10 - R-Wing Only	#00769513

NOTE: Some Items listed are used on Motor Assembly and are not replaced when Shut Off Kit is installed.
Kits Listed above MAY NOT have same parts as listed above as they will be replacement Kits.

Jul. 1995
to
Current

HYDRAULIC MOTOR RH WING SHUT-OFF OPTIONAL

S/N HY15F-01834
to
S/N HY15F-Current



RIGHT WING Kit Shown This Page

ITEM	PART NO.	QTY	DESCR
1	02967079	1	Mainfold Block
2	002502	1	Solenoid Valve
3	02967241	1	Relief Valve
4	02967242	1	Solenoid Valve
4A	02971731	1	Solenoid Coil
5	02960018	1	Adapter 4MB- 4MJ 90 Degree
6	00769510	1	Hose
7	02957617	2	" O " Ring
8	00752625	1	Adapter Tee
9	02090900	2	Adapter 90 Degree 16MB- 16MJ
10	00001300	8	Lockwasher
11	00752716	8	Bolt
12	00769511	2	Plug #4MB
13	00752717	1	Hose
14	02957622	1	Adaptor #16MB-16MJ
15	02965475	1	Hose
16	00769509	1	Adapter Tee #4FJX- 4MJ- 4MJ
17	02043600	1	Adapter #16MB- 16MJ- 45 Degree
18	02962181	1	Straight Adapter
19	002098	1	Seal Kit
20	02971424	1	Seal Kit
21	02971425	1	Seal Kit

NOTE: Some kits are not repackaged and are not repackaged. Kits Listed above are for reference only.

NOTE: Always match Shut Off kits to Motors, Check Motor part numbers and motor shapes.

SHUT OFF KITS

Kits include Parts for 1 Mower

HY15 - L & R Wing #00769512

HY10 - L-Wing Only #00773635

HY10 - R-Wing Only #00769513

NOTE: Some Items listed are used on Motor Assembly and are not replaced when Shut Off Kit is installed.
Kits Listed above MAY NOT have same parts as listed above as they will be replacement Kits.