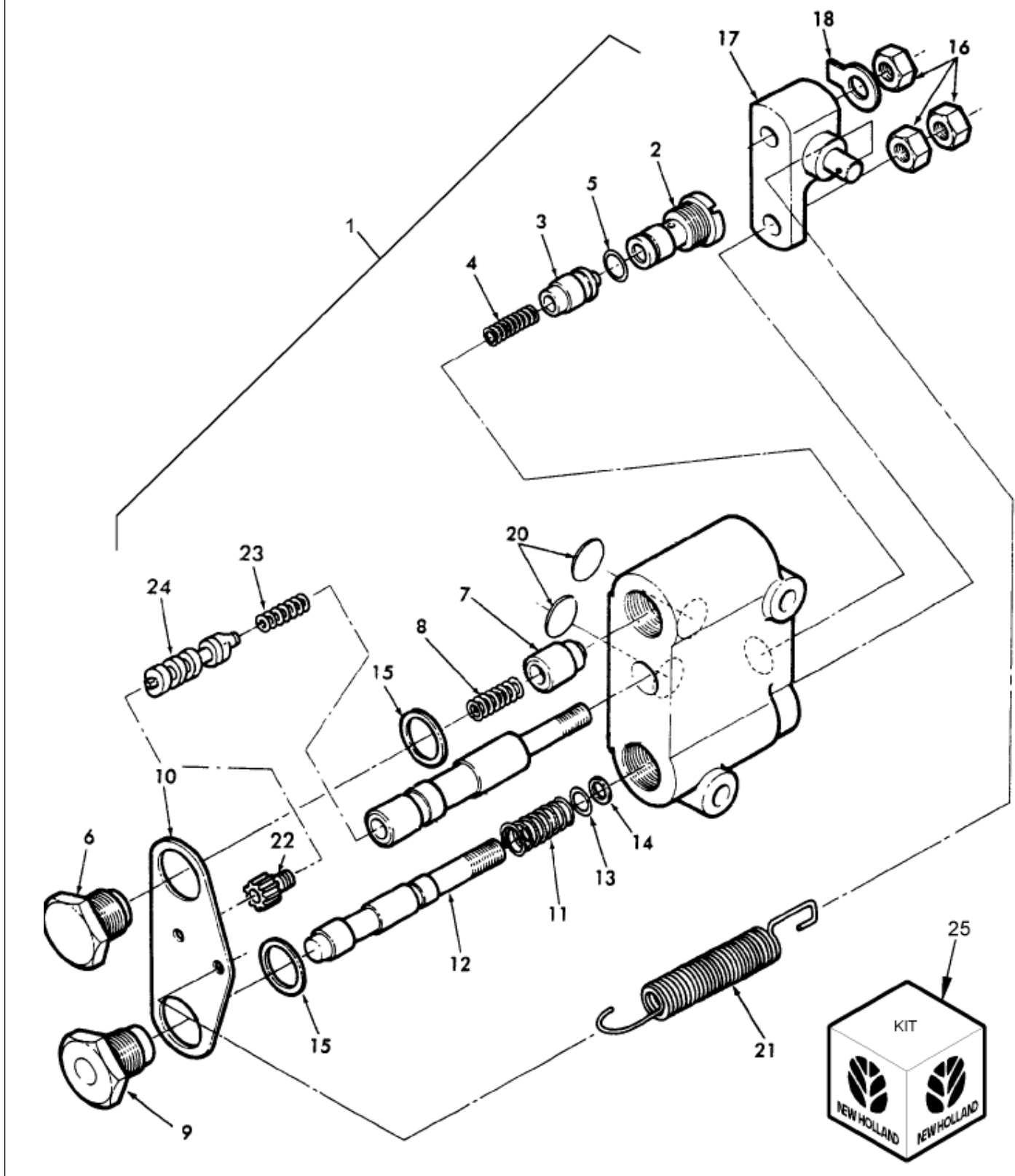


**1700 2 CYL COMPACT TRACTOR (1/79-12/82)**  
**05C02 HYDRAULIC CONTROL VALVE, W/POSITION CONTROL. 1100, 1200, 1300, 1500, 1700, 1900**



**1700 2 CYL COMPACT TRACTOR (1/79-12/82)**  
**05C02 HYDRAULIC CONTROL VALVE, W/POSITION CONTROL. 1100, 1200, 1300, 1500, 1700, 1900**

Key	Qty	Part Number	Part Name	Description
1	1	SBA340010392	Valve, Hydraulic	Valve Assy., Includes: Ref. 2 Thru 24, Start Year: 01/01/1979
2	1	SBA340292420	Plug	Plug, Start Year: 01/01/1979
3	1	SBA340292430	Valve, Hydraulic	Valve, Start Year: 01/01/1979
4	1	SBA340292440	Spring	Spring, Start Year: 01/01/1979
5	1	SBA052110090	O-ring	O-ring, Start Year: 01/01/1979
6	1	SBA340292460	Plug	Plug, Start Year: 01/01/1979
7	1	SBA340292470	Valve, Hydraulic	Valve, Start Year: 01/01/1979
8	1	SBA398212750	Spring	Spring, Start Year: 01/01/1979
9	1	SBA340292380	Plug	Plug, Start Year: 01/01/1979
10	1	SBA340292370	Plate	Plate, Start Year: 01/01/1979
11	1	SBA340292360	Spring	Spring, Start Year: 01/01/1979
12	1	SBA340292350	Valve, Hydraulic	Valve, Start Year: 01/01/1979
13	1	SBA052100070	O-ring	O-ring, P7, Start Year: 01/01/1979
14	1	SBA340292340	Ring	Ring, Start Year: 01/01/1979
15	2	SBA052109078	O-ring	O-ring, P15, Start Year: 01/01/1979
16	3	89706690	Nut	Nut, M8, Cl 8, Start Year: 01/01/1979
17	1	SBA340292330	Plate	Plate, Start Year: 01/01/1979
18	1	SBA340292300	Washer, Lock	Washer, Start Year: 01/01/1979
20	2	SBA052110120	O-ring	O-ring, Start Year: 01/01/1979
21	2	SBA398210950	Spring	Spring, Start Year: 01/01/1979
22	1	SBA340293264	Plug	Plug, Start Year: 01/01/1979
23	1	SBA340293265	Spring	Spring, Start Year: 01/01/1979
24	1	SBA340293266	Spool	Spool, By-pass, Start Year: 01/01/1979
25	1	SBA340293267	Kit	Kit, Seal Includes: Ref. 5, 13 Thru 15 & 20, Start Year: 01/01/1979