

Figure 5-137

### HST NEUTRAL ADJUSTMENT

**NOTE:** This procedure is based on the assumption that the HST Spring Housing has been pre-set at 172.8 mm (6.80") and the HST linkage pre-set at 140 mm (5.50").

**NOTE:** Measurement to center of holes and pins.

1. Raise the tractor rear and front axles so the rear and front wheels are off the ground and place safety stands under the axles.

**NOTE:** Tractors with SuperSteer front axle, must have both axles supported because the SuperSteer drive system monitors rear axle revolutions for automatic FWD system engagement.

2. Start the tractor and place the treadle, 1, in the NEUTRAL position. The rear wheel should not rotate in either direction. If the wheels are rotating proceed to next step.
3. Loosen the adjustment bolts, 2, and move the HST spring housing up or down as required until the tractor rear wheels stop rotating. Tighten the adjustment bolts, 2.
4. For fine adjustment of the NEUTRAL, loosen jam nut, 4, and turn the adjustment weld-nut, 3, 1/4 turn at a time, clockwise for reverse wheel rotation or counterclockwise for forward wheel rotation, until the rear wheels are at a complete stop.

**NOTE:** Run tractor at high idle to see proper wheel rotation.

### TREADLE FORWARD STOP ADJUSTMENT

1. To adjust the forward stop, 1, push the treadle, 3, forward until the internal transmission stop is hit.
2. Back the treadle off slightly and adjust the forward stop until it engages the treadle.

### TREADLE REAR STOP ADJUSTMENT

1. Rotate the treadle rearward 17° from the NEUTRAL position.
2. Adjust the rear stop, 2, until it engages the treadle.

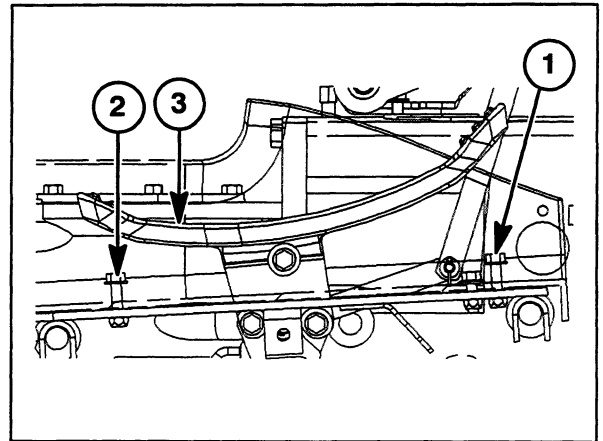


Figure 5-138

### CRUISE CONTROL ADJUSTMENT

1. Using a feeler gauge inspect the air gap between the plate, 1, and magnet, 2. Clearance should be 0.305 - 0.406 mm (0.012" - 0.016").
2. If necessary to adjust the air gap, loosen bolt, 5, slide bracket, 3, toward plate, 1, insert the 0.406 mm (0.016") feeler gauge between the plate, 1, and magnet, 2. Tighten the bolt, 5, to secure the mounting plate in position.
3. Loosen bolts, 4, and move the treadle in the full forward position.
4. Align the top arcs of the plate, 1, and magnet, 2, and torque the bolts, 4, to 38 N·m (28 ft lbs).

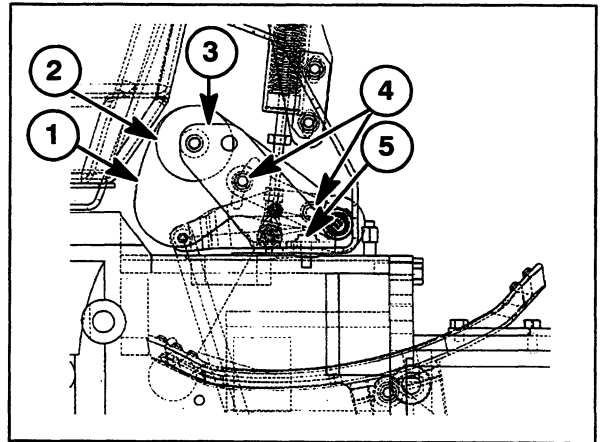


Figure 5-139

### HST NEUTRALIZER (SPRING HOLDER)

The neutralizer, 1, helps to bring the pump swash plate back to a neutral position, (vertical). It is attached to steering column support bracket and the HST pedal linkage assembly. The neutralizer is composed of a spring, 7, guides, 6, snap rings, 4, and rod, 8. The nuts, 10, are used to adjust the spring for neutralizing the HST pump.

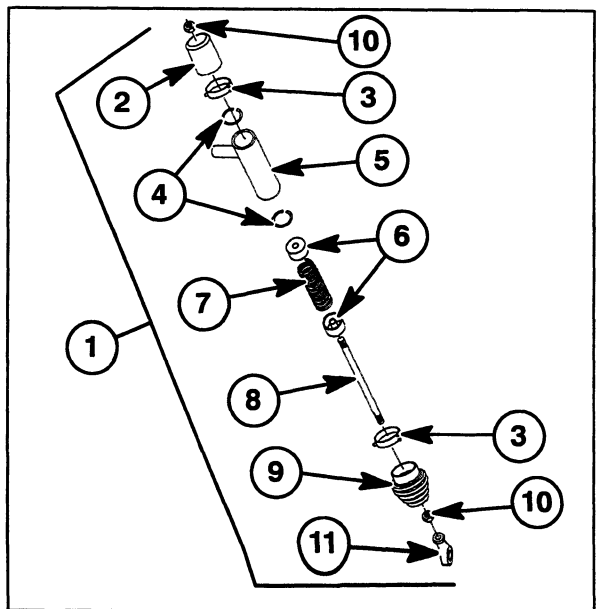


Figure 5-140