

Grapple Fork

Part # GRPF



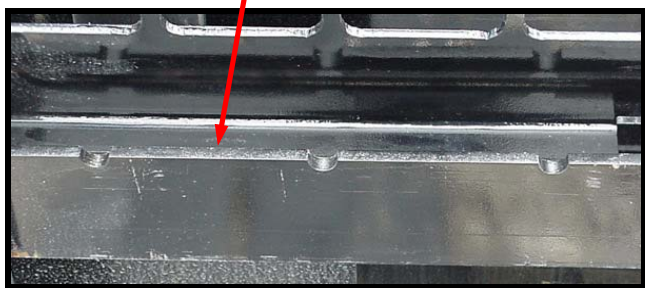
Fully Closed Position Shown Here

Features

- 2.5" Continuous hinge pin heavy walled pipe
- Heavy duty claw
- Grease able wear points
- Universal parts: hoses, rams
- Opens to 62"
- Dual cylinders
- Cushioning valve

**HOSE & COUPLER KIT SOLD SEPARATELY
SEE PG 956 FOR MORE INFORMATION**

Machined/beveled inner edge of the notched "fork top rail" allows for easier positioning of the forks.



The **Grapple Fork** is built on a standard pallet fork frame with Class II forks that have a load capacity of 3430 Lbs per pair (based on a 24" load center using a 3:1 safety factor). The forks are 1 ¼" x 4" heavy duty, forged & heat treated in 42" or 48" lengths. A long, continuous hinge pin provides added strength. The **Grapple Fork**, which is powder painted, comes standard with a MPUF-1 mounting plate, rams and cushioning valve.

Suggested List Price Pg 956

