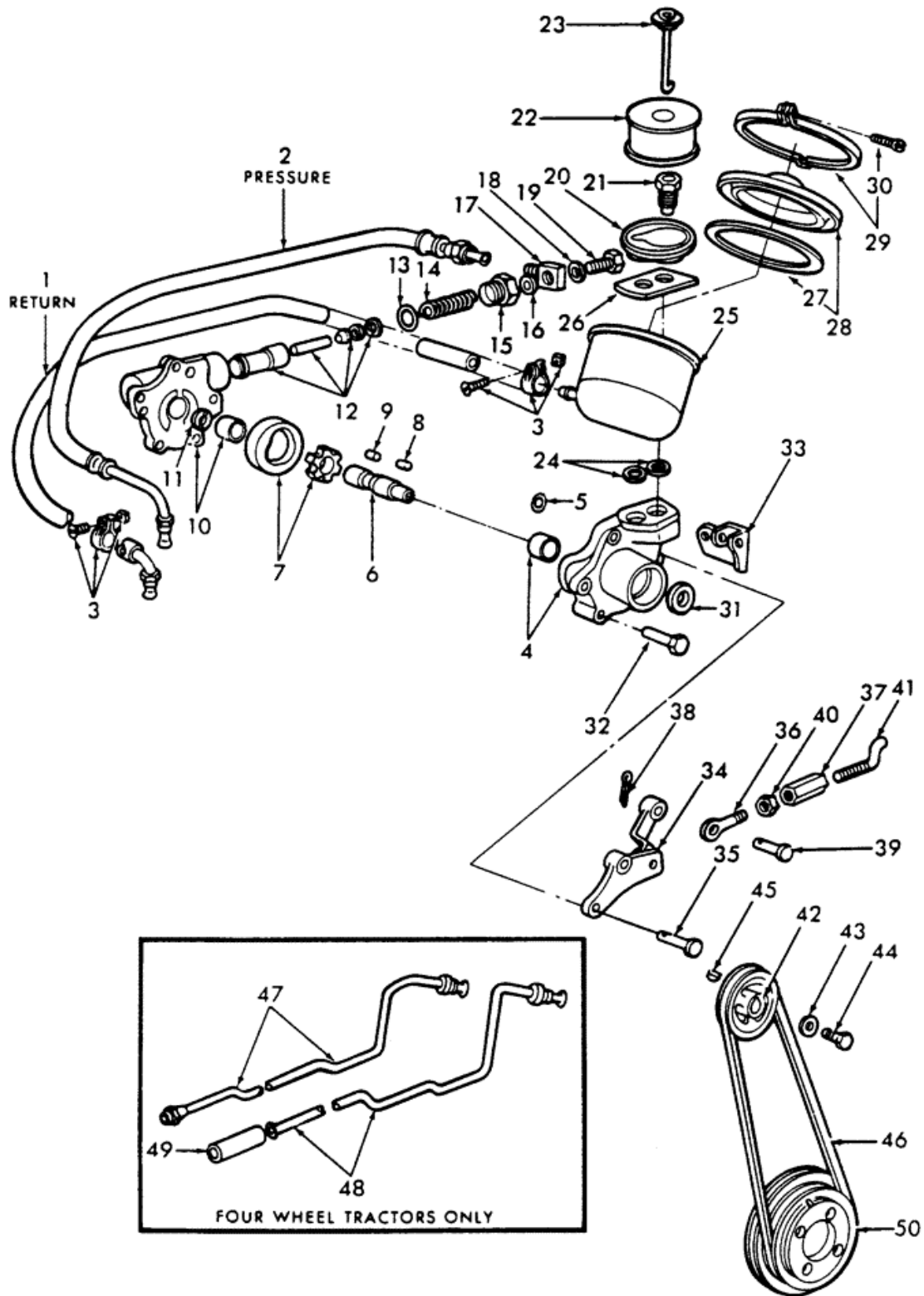


(861) - 4 CYL AG TRACTOR ALL PURPOSE (1/58-12/64) > (03C03) - POWER STEERING PUMP, OIL RESERVOIR





PARTS & MERCHANDISE  
STORE

**New Holland Agriculture 621 State Street**  
**NA Customer Relations@newholland.com Racine, Wisconsin 53404**  
**866-639-4563 option 1**

(861) - 4 CYL AG TRACTOR ALL PURPOSE (1/58-12/64) > (03C03) - POWER STEERING PUMP, OIL RESERVOIR

Diag #	Part #	Name	Description	Qty
1	231096	HOSE	Assy., Pump Return, Row Crop, Start Year: 01-JAN-59	1
2	86555975	FLEXIBLE HOSE	Hose Assy., Pump Pressure, Row Crop, Start Year: 01-JAN-59	1
3	82012719	CLAMP,15mm - 24mm, Worm Gear	Assy., Hose, Start Year: 01-JAN-59	2
4	B9NN3A643A	SPARE PART	Housing Assy., Pump, Start Year: 01-JAN-59	1
		No Longer Serviced	No Longer Serviced	1
5	89827059	O-RING,1.78mm Thk x 14mm ID, 70 Duro	Flow Director Seal 70 Duro, .551" ID x .070" Thk, Start Year: 01-JAN-59	1
6	B9NN3B559A	SHAFT	Pump Rotor, Start Year: 01-JAN-59	1
7	B9NN3A711A	POWER STEERING KIT	Kit, Pump Rotor, Start Year: 01-JAN-59	1
8	PL	PROCURE LOCALLY	Pin, Clevis, 3/8" x .94, Start Year: 01-JAN-59	1
9	LA33633A	PIN	Pump Rotor Drive, Start Year: 01-JAN-59	1
10	C3NN3A698A	SPARE PART	Cover Assy., Power Steering Pump Housing, Start Year: 01-JAN-59	1
		No Longer Serviced	No Longer Serviced	1
11	B9NN3B562A	BEARING WASHER	Bearing, Pump Shaft Thrust, Start Year: 01-JAN-59	1
12	86534520	HYDRAULIC VALVE	Valve Assy., Pump, Start Year: 01-JAN-59	1
13	87050S94	O-RING	.812" ID x .139" Thk, Start Year: 01-JAN-59	1
14	B8NN3A570A	SPARE PART	Spring, Pump Flow Control Valve, Start Year: 01-JAN-59	1
		No Longer Serviced	No Longer Serviced	1
15	KD33627A	SPARE PART	Fitting, Pump Valve Outlet, Start Year: 01-JAN-59	1
		No Longer Serviced	No Longer Serviced	1
16	81829207	OIL SEAL,Square, 2.74mm Thk x 13.82mm ID, 75 Duro	SEALRING, , Pressure Hose .55" x .107" Thk, Start Year: 01-JAN-59	1
17	372586S	ADAPTER	Pressure Hose, Start Year: 01-JAN-59	1
18	128999	O-RING,0.103" Thk x 0.424" ID, -111, CI 5, 75 Duro	-111, 70 Duro, .424" ID x .103" Thk, Pressure Hose, Start Year: 01-JAN-59	1
19	NLS	NO LONGER SERVICED	Bolt, Pressure Hose, Start Year: 01-JAN-59	1
20	231135	SUPPORT	Oil Reservoir Filter Element, Start Year: 01-JAN-59	1
		No Longer Serviced	No Longer Serviced	1
21	231115	SPARE PART	Stud, Oil Reservoir, Start Year: 01-JAN-59	1
22	AE33538A	ELEMENT	Assy., Oil Reservoir Filter, Start Year: 01-JAN-59	1

Diag #	Part #	Name	Description	Qty
23	C0NN3C603B	RETAINER	Assy., Oil Reservoir Filler Element, Start Year: 01-JAN-59	1
24	AG33547A	GASKET	Pump Intake	2
25	231116	HYDRAULIC OIL RESERVOIR	Reservoir	1
26	B9NN3B563A	SPARE PART	Reinforcement, Oil Reservoir Orifice, Start Year: 01-JAN-59	1
27	231191	GASKET	Oil Reservoir Cover, Start Year: 01-JAN-59	1
28	C0NN3A582A	COVER	Assy., Oil Reservoir, Start Year: 01-JAN-59	1
29	231133	CLAMP	Assy., Reservoir Cover, Start Year: 01-JAN-59	1
30	PL	PROCURE LOCALLY	Screw, Fillister Hd., 1/4"-20 x .87, Start Year: 01-JAN-59	1
31	764135	SEAL	Oil, Power Steering Pump, Assy, Start Year: 01-JAN-59	1
32	PL	PROCURE LOCALLY	Bolt, Hex, 3/8"-16 x 2, Start Year: 01-JAN-59	2
33	86513520	BRACKET	Pump Support, Start Year: 01-JAN-59	1
	PL	PROCURE LOCALLY	Screw	1
34	C3NN3C511A	BRACKET	Pump Support, Start Year: 01-JAN-59	1
35	PL	PROCURE LOCALLY	Bolt, HH, 3/8"-16 x 2-1/2", Start Year: 01-JAN-59	1
36	C0NN3B572A	ROD	Power Steering Pump Adjusting Turnbuckle, Start Year: 01-JAN-59	1
37	C0NN3C632A	SPARE PART	Turnbuckle, Power Steering Pump Adjusting, Start Year: 01-JAN-59	1
38	PL	PROCURE LOCALLY	Pin, Cotter, 1/8" x 5/8", Start Year: 01-JAN-59	1
39	PL	PROCURE LOCALLY	Pin, Clevis, 3/8" x .94, Start Year: 01-JAN-59	1
40	PL	PROCURE LOCALLY	Nut, Hex, 3/8"-24, Start Year: 01-JAN-59	1
41	C0NN3B572B	ROD	Power Steering Adjusting Turnbuckle, Start Year: 01-JAN-59	1
42	EBJ33556A	PULLEY	Pump, Start Year: 01-JAN-59	1
43	PL	PROCURE LOCALLY	Washer, Flat, 5/16", Start Year: 01-JAN-59	1
44	353864S7	SCREW	SCREW	1
		No Longer Serviced	No Longer Serviced	1
45	PL	PROCURE LOCALLY	Key, Woodruff, 1/8" x 1/2", Start Year: 01-JAN-59	1
46	75629	V-BELT,0.50" W x 41.70" L	Pump 0.50" W x 41.70" L	1
47	B8NN3A562A	TUBE	Assy., Pump Pressure, Except Row Crop, Start Year: 01-JAN-59	1
48	B8NN3A563A	TUBE	Assy., Pump Return, Except Row Crop, Start Year: 01-JAN-59	1
49	D1NN3A005A	HOSE,9.93 mm ID x 511.05 mm	Power Steering Pump Return 9.93 mm ID x 511.05 mm, Start Year: 01-JAN-59	1
50	C0NN6351A	PULLEY	, Start Year: 01-JAN-59	1

Diag #	Part #	Name	Description	Qty
		This part is now a cast part.	This part is now a cast part.	1
51	NLS	NO LONGER SERVICED	Venturi, Power Steering Oil, Start Year: 01-JAN-59, Serial Range: Reservoir-Pump{AF3760A}	1
		No Longer Serviced	No Longer Serviced	1
	C3NN3C558A	SPARE PART	Orifice, Power Steering Pump Discharge, Start Year: 01-JAN-59	1
		No Longer Serviced	No Longer Serviced	1
	359290S	RING	Pump Rotor Shaft Snap, Start Year: 01-JAN-59	1
	14460480	O-RING,2.612" ID x 2.818" OD x .103"	2.612" ID x .103" Thk, Housing Seal, Start Year: 01-JAN-59	1
	C3NN3A674C	HYDRAULIC PUMP	Pump Assy., Power Steering, Replaces P/N C0NN-3A674-F, Start Year: 01-JAN-59	1
	C3NN3A691B	HYDRAULIC PUMP	Pump, Reservoir	1