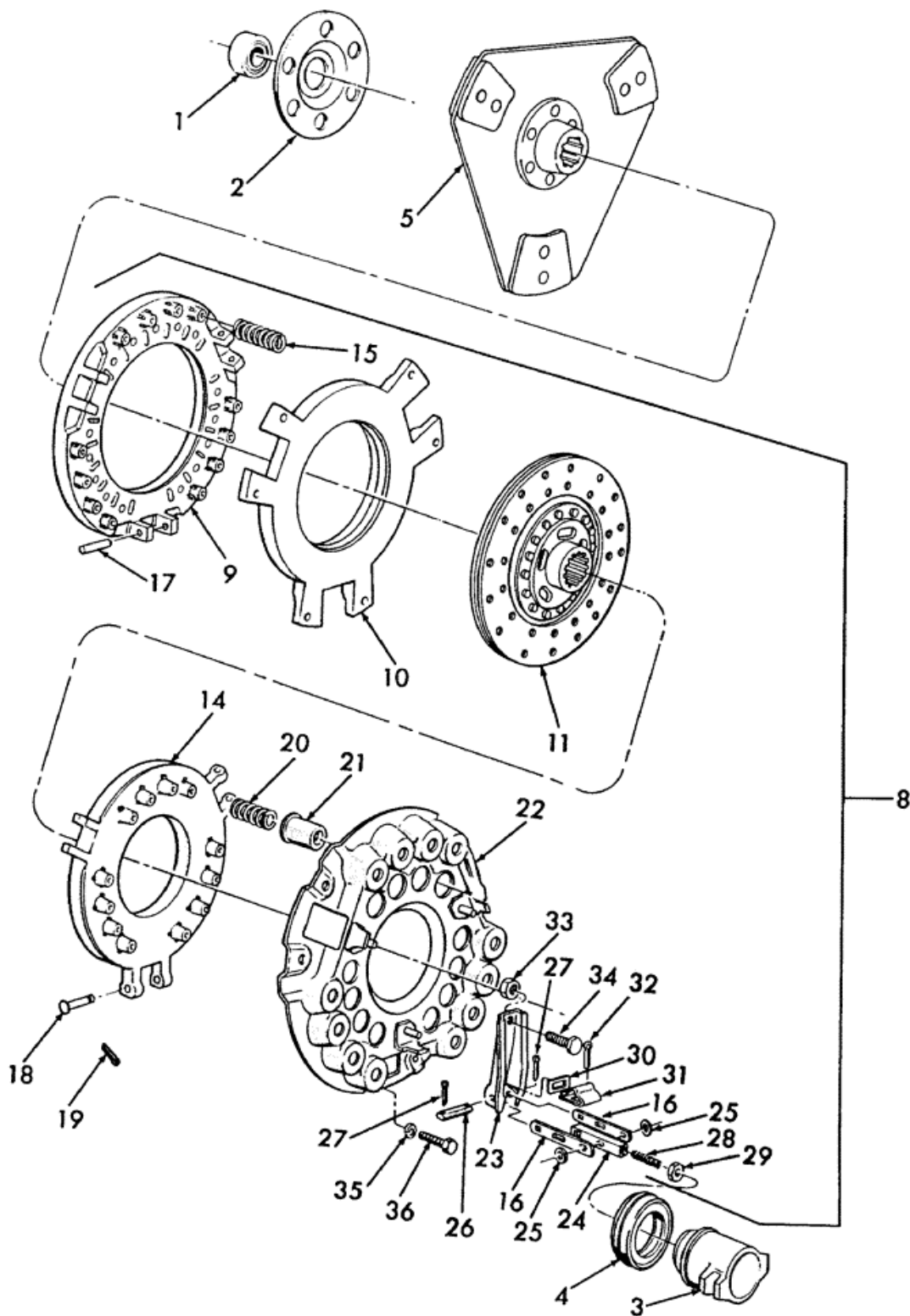


(3000 - SERIES) - 3 CYL TRACTOR (1/65-12/74) > (07E07) - DOUBLE CLUTCH ASSEMBLY - 2000, 3000, 4110





PARTS & MERCHANDISE
STORE

New Holland Agriculture 621 State Street
NA Customer Relations@newholland.com Racine, Wisconsin 53404
866-639-4563 option 1

(3000 - SERIES) - 3 CYL TRACTOR (1/65-12/74) > (07E07) - DOUBLE CLUTCH ASSEMBLY - 2000, 3000, 4110

Diag #	Part #	Name	Description	Qty
1	81805417	BALL BEARING,16.99mm ID x 40mm OD x 12mm W	Bearing, Pilot, Start Year: 01-JAN-65	1
2	81816613	RETAINER	Retainer, Pilot Bearing, Replaces P/N C5NN7609A, Start Year: 01-JAN-65	1
3	C5NN7571E	HUB	Hub, Release Bearing, Years: 01-JAN-65-31-MAR-68	1
3	C7NN7571B	HUB	Hub, Release Bearing, w/6	1
4	787580A8	BEARING ASSY,2.0635" ID x 3.562" OD x 0.807"	Bearing Assy., Release, w/4 Speed Transmission, Years: 01-JAN-65-31-DEC-70	1
4	82010859	BEARING ASSY,63.5mm ID x 103.38mm OD x 22.1mm W	Bearing Assy., Release, w/ 6	1
4	D8NN7580BBGV	BEARING	Bearing Assy., Release, w/ 6	1
5	E8NN7550BA	CLUTCH & DISC ASSY,279.4mm OD	Disc Assy., 11", 15 Spline, Replaces P/N C7NN7550C, Years: 01-JAN-65-30-SEP-69	1
5	84589643R	REMAN-CLUTCH KIT	2000 Series (1/65-12/74), 2100	1
5	84589643C	SERVICE KIT	Return Part Number	1
5	84589645R	REMAN-CLUTCH KIT	2000/ 3000 /4000 Series (10/1/69 - 9/30/75), 2100	1
5	84589645C	SERVICE KIT	Return Part Number, use the carton the reman kit was shipped in to return core parts	1
5	84589647R	REMAN-CLUTCH KIT	2000/3000/4000 Series (1/1/65 - 9/30/69), 2100 All Purpose (3/65 - 9/30/69), 2110/ 3110/4110 All LCG (1/1/65 - 9/30/69), 2120	1
5	84589647C	SERVICE KIT	Return Part Number, (Note:use the shipping carton kit was received in to return core parts)	1
5	86640495	REMAN-CLUTCH DISC	Disc Assy 11"	1
5	86640496	CORE-CLUTCH DISC	Return Part Number	1
5	C7NN7550AC	CLUTCH & DISC ASSY,279.4mm OD	Disc Assy., 11", Triangular, 10 Spline, Years: 01-OCT-69-30-SEP-75	1
5	86640493	REMAN-CLUTCH DISC	2100. 2110,2120, 2150,2300, 2310,3055, 3100,3110, 3120,3150,3190,3300,3310	1
5	86640494	CORE-CLUTCH DISC	Return Part Number	1
5	E8NN7550HA	DISC	Disc Assy., 11", Round, 10 Spline, Except 4110, Start Year: 01-OCT-71	1
5	86634456	REMAN-CLUTCH ASSY	Disc Assembly 11", Round, 10 Spline, Except 4110, Start Year: 01-OCT-71	1
5	86634455	CORE-CLUTCH PLATE	Return Part Number	1
8	D8NN7502AA	CLUTCH	Plate	1
8	84589643R	REMAN-CLUTCH KIT	2000 Series (1/65-12/74), 2100	1

Diag #	Part #	Name	Description	Qty
8	84589643C	SERVICE KIT	Return Part Number, (Note:use the shipping carton kit was received in to return core parts)	1
8	84589645R	REMAN-CLUTCH KIT	2000/ 3000 /4000 Series (10/1/69 - 9/30/75), 2100	1
8	84589645C	SERVICE KIT	Return Part Number, (Note:use the shipping carton kit was received in to return core parts)	1
8	84589647R	REMAN-CLUTCH KIT	2000/3000/4000 Series (1/1/65 - 9/30/69), 2100 All Purpose (3/65 - 9/30/69), 2110/ 3110/4110 All LCG (1/1/65 - 9/30/69), 2120	1
8	84589647C	SERVICE KIT	Return Part Number, (Note:use the shipping carton kit was received in to return core parts)	1
8	84589649R	REMAN-CLUTCH KIT	2000/ 3000 /4000 Series (10/1/69 - 9/30/75), 2100	1
8	84589649C	SERVICE KIT	Return Part Number - Use carton reman kit was shipped in to return core parts	1
8	86634451	REMAN-CLUTCH PLATE	Plate	1
8	86634452	CORE-CLUTCH PLATE	Return Part Number, Clutch Assembly	1
8	D8NN7502AA	CLUTCH	Plate	1
8	86634451	REMAN-CLUTCH PLATE	Plate	1
8	86634452	CORE-CLUTCH PLATE	Return Part Number Clutch Assembly	1
8	D8NN7502BA	CLUTCH	Plate	1
9	C5NN7566C	PLATE	Plate, 11.20" Dia., Start Year: 01-JAN-65	1
10	C7NN7N566A	PRESSURE RING	Plate, Intermediate Pressure, Start Year: 01-JAN-65	1
11	82845209	CLUTCH PLATE,219.2mm OD	Disc Assy., 8-1/2", PTO, Start Year: 01-JAN-65	1
14	C5NN7566B	PLATE	Plate, Pressure, 8.55" Dia., Start Year: 01-JAN-65	1
15	C5NN7572J	SPRING	Spring, Pressure Plate, Yellow, Replaces P/N C5NN7572E, Years: 01-JAN-65-30-SEP-69	12
15	D0NN7572B	SPRING	Spring, Pressure Plate, Dark Blue, Start Year: 01-OCT-69	12
16	C5NN7N581A	CONNECTING LINK	Link, Release Lever, Start Year: 01-JAN-65	6
17	C5NN7N574A	PIN	Pin, Start Year: 01-JAN-65	3
18	D8NN7533AA	PIN	Pin, Start Year: 01-JAN-65	3
19	280250	COTTER PIN,3/32" OD x 3/4" L	Pin, Split (Cotter), 3/32" x 3/4", Start Year: 01-JAN-65	3
20	C5NN7572D	SPRING	Spring, PTO Pressure Plate, Violet, Start Year: 01-JAN-65	9
21	C5NN7N612A	CUP	Cup, PTO Pressure Plate Spring, Start Year: 01-JAN-65	9
22	C5NN7N504A	COVER	Cover Assy., Start Year: 01-JAN-65	1
23	C5NN7541A	LEVER	Lever, Release CLUTCH KIT, INCLUDE WASHER C5NN7N527A, QTY 2, AND A	3

Diag #	Part #	Name	Description	Qty
			QTY 1 EA OF ; LEVER 81812329, LINK C5NN7N582A, SCREW C5NN7N538A, NUT 87307, PIN D8NN7533AA, AND COTTER PIN 280250. , Start Year: 01-JAN-65	
24	C5NN7N582A	CONNECTING LINK	Link, Release Lever Center, Start Year: 01-JAN-65	3
25	C5NN7N527A	SPACER	Spacer, Release Lever, Start Year: 01-JAN-65	6
26	C5NN7N662A	TOP LINK	Strut, Release Lever, Start Year: 01-JAN-65	3
27	C5NN7N666A	PIN	Pin, Cotter, 1/8" x 1/2", Start Year: 01-JAN-65	6
28	C5NN7N538A	SCREW	Screw, Release Lever Link Adjusting, Start Year: 01-JAN-65	3
29	87307	JAM NUT,Jam, 5/16"-24, G2	Nut, Jam, G2, 5/16"-24, Start Year: 01-JAN-65	3
30	C5NN7N585A	SHIM	Shim, .005", Release Lever Retaining Clip, Start Year: 01-JAN-65	1
30	C5NN7N585B	SHIM	Shim, .010", Release Lever Retaining Clip, Start Year: 01-JAN-65	1
30	C5NN7N585C	SHIM	Shim, .015", Release Lever Retaining Clip, Start Year: 01-JAN-65	1
30	C5NN7N585D	SHIM	Shim, .020", Release Lever Retaining Clip, Start Year: 01-JAN-65	1
31	C5NN7N614A	CLIP	Clip, Release Lever Retaining, Start Year: 01-JAN-65	3
32	C5NN7N665A	COTTER PIN	Pin, Cotter, 1/16" x 3/4", Start Year: 01-JAN-65	3
33	C5NN7N526A	NUT	Nut, Hex, 3/8"-24, Start Year: 01-JAN-65	3
34	C5NN7N537A	ADJUSTMENT SCREW,Hex, 3/8" - 24 x 1"	Screw, HH, 3/8"-24 x 61/64", Start Year: 01-JAN-65	3
35	80681	BEARING WASHER,5/16"	Washer, Lock, 5/16", Start Year: 01-JAN-65	6
36	C5NN7N569A	BOLT	Bolt, Pressure Plate	6