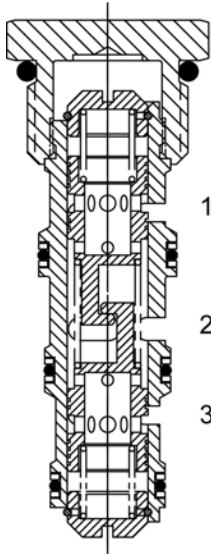




DG-FDA Flow Divider / Combiner Valve, Spool Type



DESCRIPTION

10 size, 7/8-14 thread "Delta Series", spool type, flow divider/combiner.

OPERATION

In the dividing mode, the DG-FDA will divert input flow from port (2) to ports (3) and (1), based on the ratio specified, regardless of operating pressure.

1 The DG-FDA will combine input flows from ports (3) and (1), to port (2) by the same ratio.

Should circuit operation result in a blockage of either (3) or (1), the opposite port may also close under certain conditions. Should this potential exist, consult the factory.

FEATURES

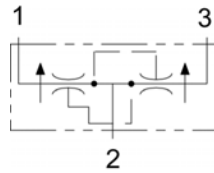
- Hardened parts for long life.
- Industry common cavity.



DO NOT EXCEED MAXIMUM FLOW PER MODEL

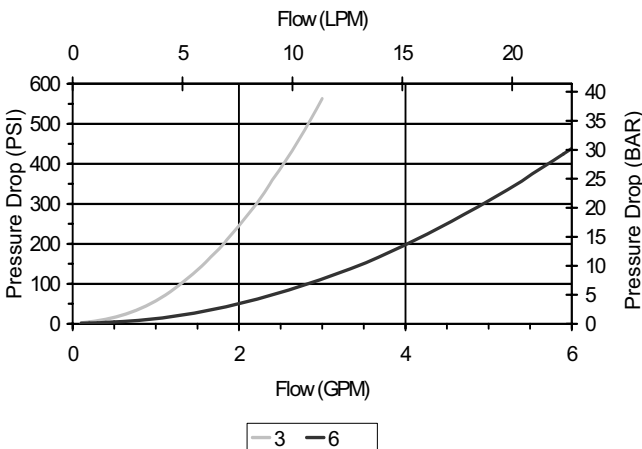
For higher accuracy flow ratio, use DG-FDH

HYDRAULIC SYMBOL



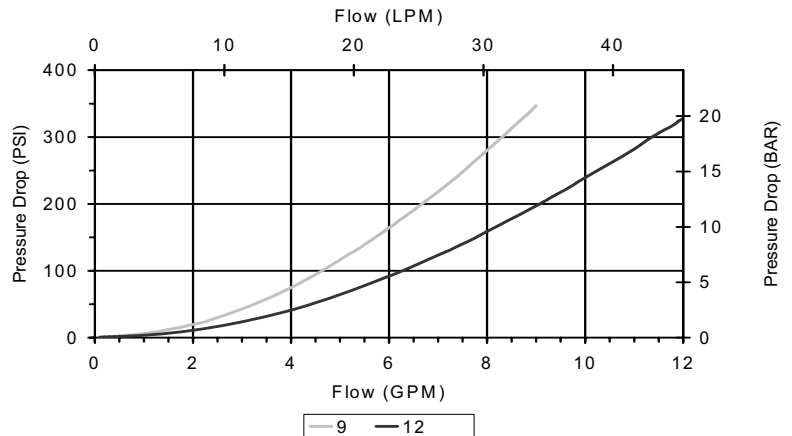
PERFORMANCE

Actual Test Data (Cartridge Only)



VALVE SPECIFICATIONS

Maximum Flow	12 GPM (45 LPM)
Accuracy on Flow Splits	+/- 10% of Max. Rated Inlet Flow
Maximum Operating Pressure	3500 PSI (241 bar)
Viscosity Range	36 to 3000 SSU (3 to 647 cSt)
Filtration	ISO 18/16/13
Media Operating Temperature Range	-40° to 250° F (-40° to 120° C)
Weight	.21 lbs. (.10 kg)
Operating Fluid Media	General Purpose Hydraulic Fluid
Cartridge Torque Requirements	30 ft-lbs (40.6 Nm)
Cavity	DELTA 4W
Cavity Form Tool (Finishing)	40500002
Seal Kit	21191214



WARNING: The specifications/application data shown in our catalogs and data sheets are intended only as a general guide for the product described (herein). Any specific application should not be undertaken without independent study, evaluation, and testing for suitability.

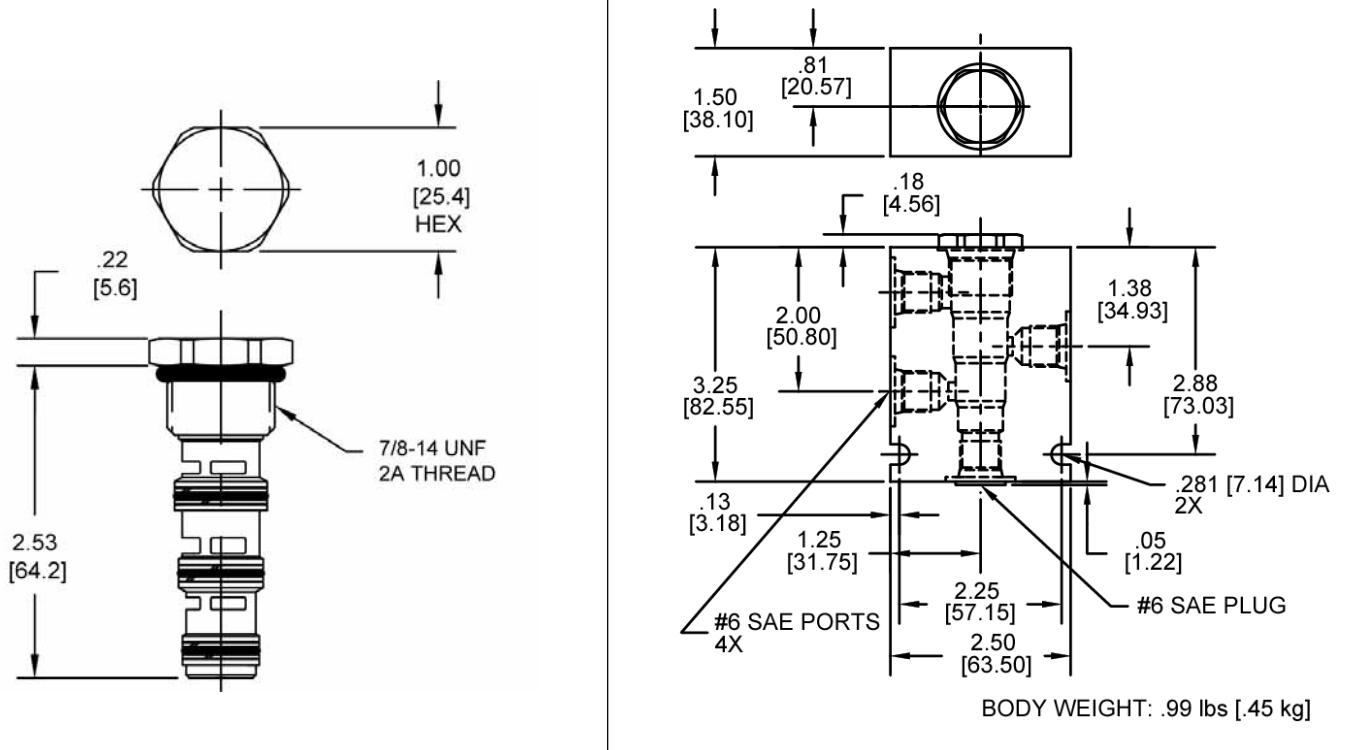
Phone: (815) 397-6628

Fax: (815) 397-2526

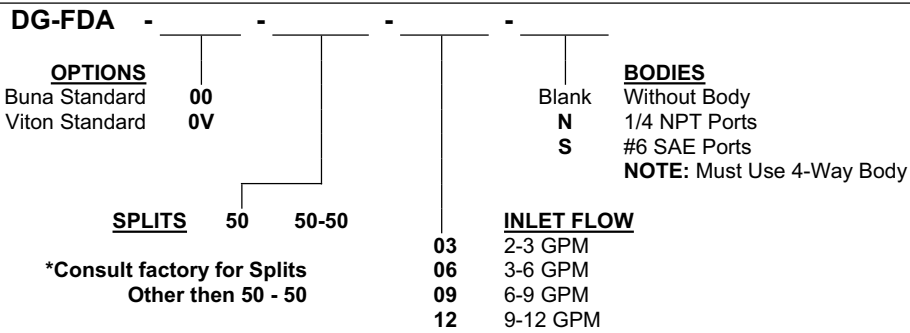
E-mail: delta@delta-power.com



DIMENSIONS



ORDERING INFORMATION



WARNING: The specifications/application data shown in our catalogs and data sheets are intended only as a general guide for the product described (herein). Any specific application should not be undertaken without independent study, evaluation, and testing for suitability.

Phone: (815) 397-6628

Fax: (815) 397-2526

E-mail: delta@delta-power.com