

# DN 3-4-5-6

## DISTRIBUTORI MONOBLOCCO MONOBLOCK DIRECTIONAL VALVES EINBLOCKSTEUERGERÄTE

### DATI TECNICI • TECHNICAL DATA • TECHNISCHE MERKMALE

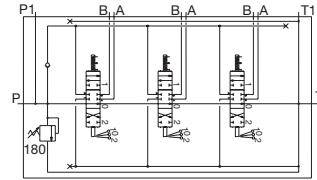
Portata nominale (max) <i>Nominal flow (max)</i> Nominaler Durchfluß (max)	45 (55) l/min 11.9 (14.5) gpm
Pressione massima <i>Maximum pressure</i> Maximaler Betriebsdruck	300 (4351) bar (psi)
Contropressione massima allo scarico <i>Maximum tank pressure</i> Maximaler Gegendruck Tankleitung	50 (730) bar (psi)
Massima trafila interna <i>Maximum internal leakage</i> Maximale interne Leckage	8 cc/min (21 cSt - 100 bar)
Temperatura d'utilizzo <i>Temperature range</i> Betriebstemperatur	-20°C +80°C NBR seals -20°C +130°C HNBR seals
Viscosità olio <i>Oil viscosity</i> Ölviskosität	Da 10 cSt a 100 cSt <i>From 10 cSt to 100 cSt</i> Von 10 cSt nach 100 cSt
Fluido <i>Fluid</i> Öl	Olio a base minerale <i>Mineral based oil</i> Mineral Öl

### FILETTATURA • THREAD • GEWINDE

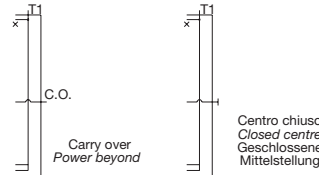
CODICE MODEL BEZEICHNUNG	TIPO TYPE GEWINDE	COPPIA DI SERRAGGIO Nm TORQUE Nm ANZUGSMOMENT Nm
C	M 18 X 1,5	40
B	1/2 Gas	70
E	3/4" UNF-16	50

### DIMENSIONI • SIZE • ABMESSUNGEN

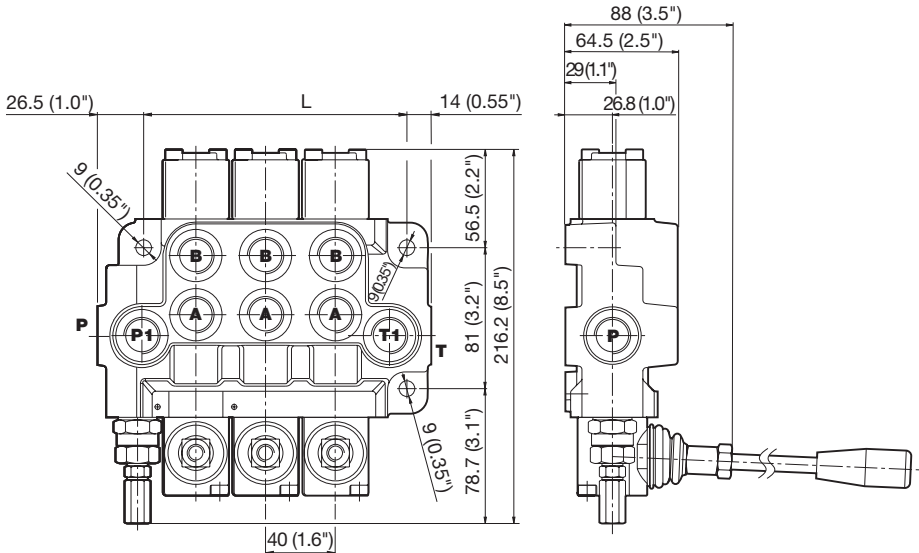
N° DI SEZIONI N° OF SECTIONS ANZAHL ELEMENTE	L mm (inch)	MASSA Kg (lb) WEIGHT Kg (lb) GEWICHT Kg (lb)
DN3	151 (5.94)	7.3 (16.0)
DN4	191 (7.52)	9.4 (20.7)
DN5	231 (9.1)	11.5 (25.3)
DN6	271 (10.67)	13.6 (30.0)



DN/3 BZ A1x3 PP1TT1



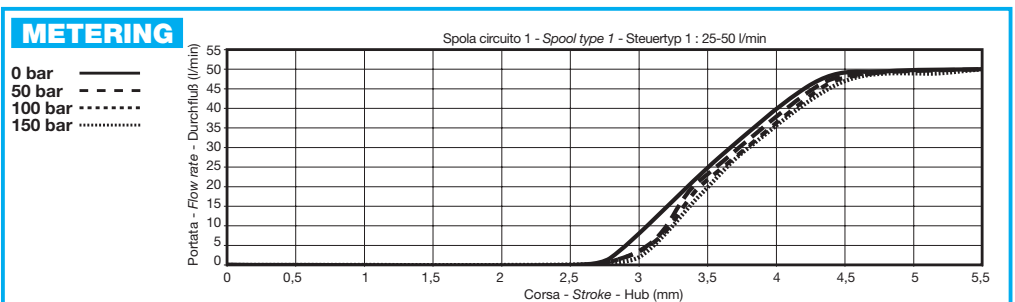
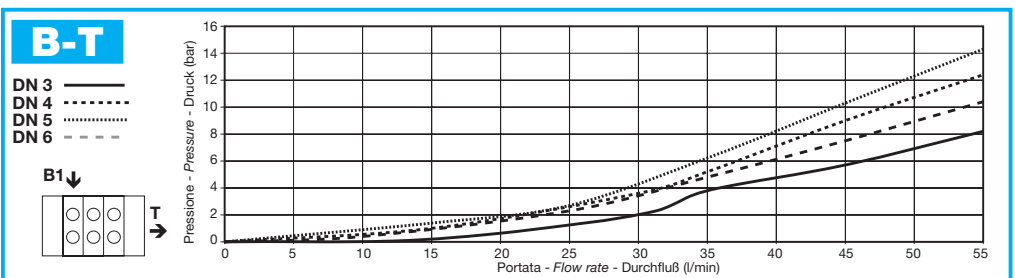
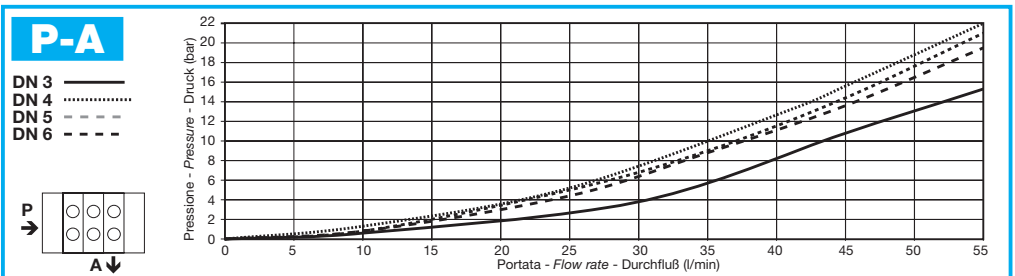
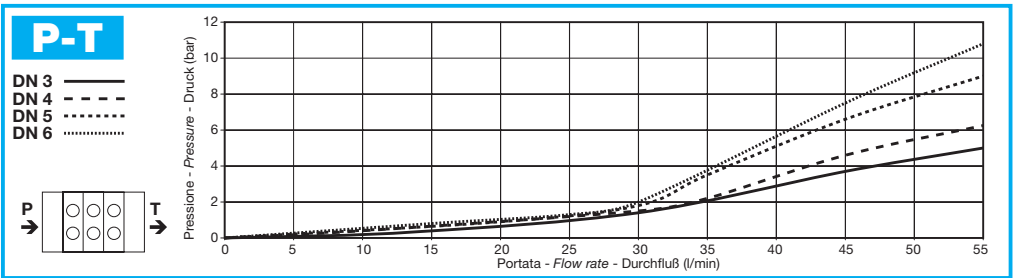
Centro chiuso  
Closed centre  
Geschlossene  
Mittelstellung





**CURVE CARATTERISTICHE**  
**FLOW CURVES**  
**TYPISCHE KURVEN**

Le curve caratteristiche in catalogo sono tipiche di prodotti di produzione testati in laboratorio e non sono necessariamente rappresentative di ogni unità.  
*Performance Characteristics shown in catalog are typical of production products tested in laboratory and are not necessarily representative of any other unit.*  
Die Werte im Katalog beziehen sich auf Standardware, die auf der Prüfbank getestet wurde und sind nicht repräsentativ für andere Einheiten.



Parametri di prova / Testing parameters / Prüfparameter: 50°C - 21 cSt (spola circuito 1 - spool type 1 - steuertyp 1)

**CIRCUITI E SCHEMI IDRAULICI**  
**HYDRAULIC CIRCUITS AND SCHEMES**  
**STEUERTYPEN UND HYDRAULISCHE SCHEMATA**

POSIZIONATORE • SPOOL CONTROL • SCHIEBERSTELLUNG	
<b>A</b>	<p>Posizione neutra in 0 Neutral position in 0 Neutralstellung in 0</p>
<b>B</b>	<p>Posizione neutra in 0, detent in 1 Neutral position in 0, detent in 1 Neutralstellung in 0, rastend in 1</p>
<b>C</b>	<p>Posizione neutra in 0, detent in 2 Neutral position in 0, detent in 2 Neutralstellung in 0, rastend in 2</p>
<b>D</b>	<p>Detent in 0, 1, 2 Detent in 0, 1, 2 Raststellung in 0, 1 und 2</p>
<b>NT</b>	<p>Posizione neutra in 0, detent in 4 Neutral position in 0, detent in 4 Neutralstellung in 0, rastend in 4</p>
<b>R</b>	<p>Posizione neutra in 2 Neutral position in 2 Neutralstellung in 2</p>
<b>S</b>	<p>Posizione neutra in 1 Neutral position in 1 Neutralstellung in 1</p>

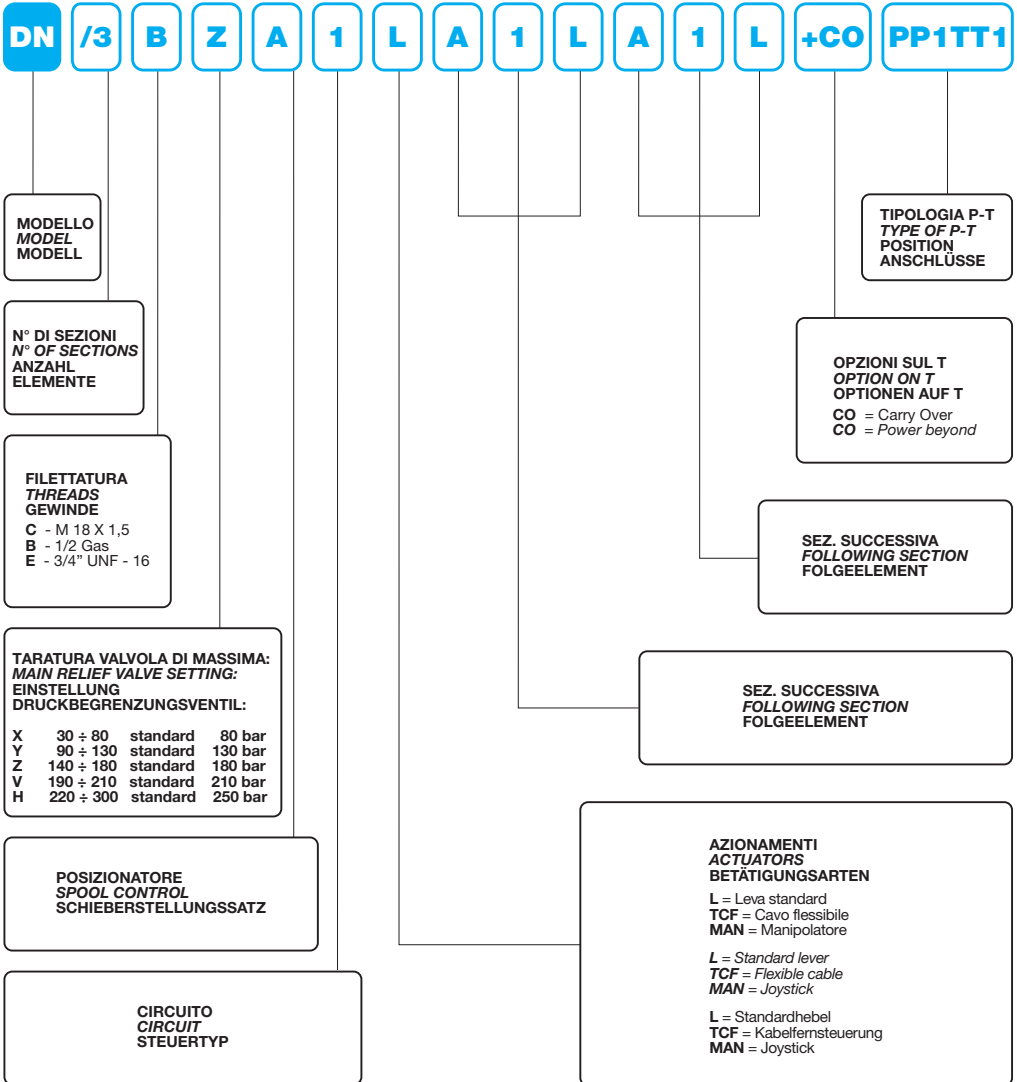
CIRCUITO • SPOOL TYPE • STEUERTYP					
	POS. 3	POS. 1	POS. 0	POS. 2	POS. 4
<b>1</b>		P → B A → T BP →	P → T A → B BP →	P → A B → T BP →	
<b>3</b>		P → B A → T BP →	A, B → T P → B BP →	P → A B → T BP →	
<b>4</b>		A → T P, B → BP →	P → T A → B BP →	P → A B → T BP →	
<b>5</b>		P → B A, T → BP →	P → T A → B BP →	P, A → B → T BP →	
<b>70</b>		P → B A → T BP →	P → T A → B BP →	P → A B → T BP →	A, B → T P →

Le configurazioni mostrate sono riferite a prodotti standard, se la vostra applicazione richiede diversamente, prego di contattare il responsabile vendite di zona.  
*Products as shown are typical of standard products, if your application needs some deviation in design, please contact our local sales representative.*  
 Die abgebildeten Produkte sind typische Standardwaren. Sollten Sie für Ihre Anwendung Änderungen bezüglich des Aussehens benötigen, wenden Sie sich bitte an Ihren zuständigen Vertreter.

POSIZIONATORE SPOOL CONTROL SCHIEBERSTELLUNG	CIRCUITO • CIRCUIT • CIRCUIT				
	<b>1</b>	<b>3</b>	<b>4</b>	<b>5</b>	<b>70</b>
<b>A</b>	<input checked="" type="checkbox"/>	<input checked="" type="checkbox"/>	<input checked="" type="checkbox"/>	<input checked="" type="checkbox"/>	-
<b>B</b>	<input checked="" type="checkbox"/>	<input checked="" type="checkbox"/>	<input checked="" type="checkbox"/>	<input type="checkbox"/>	-
<b>C</b>	<input checked="" type="checkbox"/>	<input checked="" type="checkbox"/>	<input type="checkbox"/>	<input checked="" type="checkbox"/>	-
<b>D</b>	<input checked="" type="checkbox"/>	<input checked="" type="checkbox"/>	<input checked="" type="checkbox"/>	<input checked="" type="checkbox"/>	-
<b>NT</b>	-	-	-	-	<input checked="" type="checkbox"/>
<b>R</b>	<input checked="" type="checkbox"/>	<input checked="" type="checkbox"/>	<input type="checkbox"/>	<input type="checkbox"/>	-
<b>S</b>	<input checked="" type="checkbox"/>	<input checked="" type="checkbox"/>	<input checked="" type="checkbox"/>	<input type="checkbox"/>	-



**ISTRUZIONI PER L'ORDINAZIONE  
ORDERING INSTRUCTIONS  
BESTELLANLEITUNG**



Nota: non dirigere getti d'acqua direttamente sulla valvola.  
Note: do not wash the valve with direct water jet.  
Bitte beachten: Steuergerät/Ventil nicht mit Hochdruckreiniger waschen.