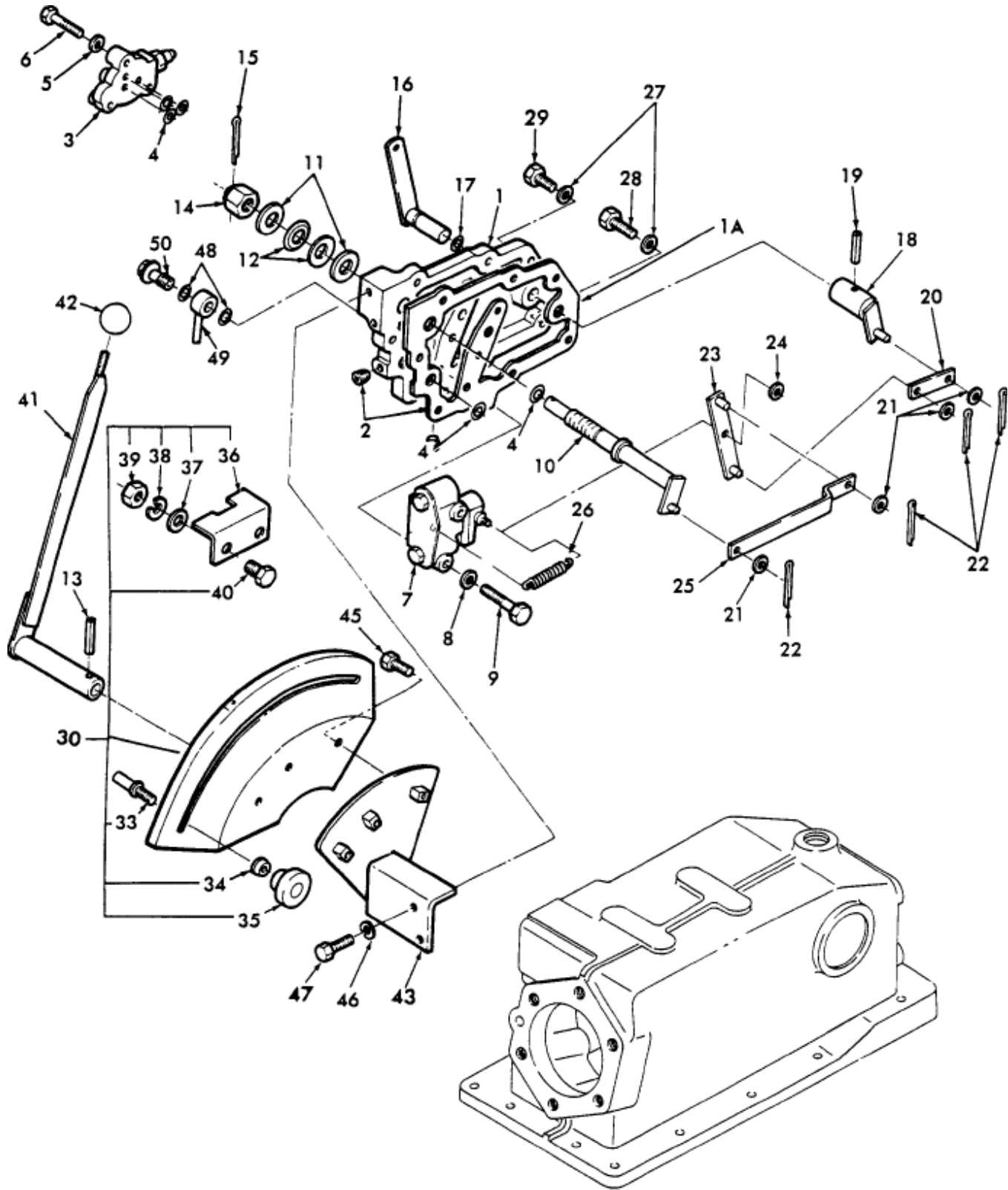


1700 2 CYL COMPACT TRACTOR (1/79-12/82)
05B03 HYDRAULIC CONTROL VALVE & RELATED PARTS, W/POSITION CONTROL, 1700 & 1900



1700 2 CYL COMPACT TRACTOR (1/79-12/82)
05B03 HYDRAULIC CONTROL VALVE & RELATED PARTS, W/POSITION CONTROL, 1700 & 1900

Key	Qty	Part Number	Part Name	Description
1	1	SBA344880220	Cover	Cover, Valve, Replaced By (1) SBA344880221 & (1) SBA344990190, No Longer Serviced, Years: 03/01/1980-02/28/1982
1	1	SBA344880221	Cover	Cover, Start Year: 03/01/1982
1	1	SBA344880050	Cover	Cover, Valve, Years: 01/01/1979-02/28/1980
1A	1	SBA344990190	Gasket	Gasket, Start Year: 03/01/1982
2	2	SBA064409006	Plug	Plug, Pipe Thread, 1/8", Start Year: 01/01/1979
3	1	SBA340010381	Valve, Hydraulic	Valve, Refer To Fig. 05B05 For Details, Start Year: 01/01/1979
4	5	SBA052100120	O-ring	O-ring, P12, Start Year: 01/01/1979
5	3	80681	Washer, Lock	Washer, Lock, 5/16", Start Year: 01/01/1979
6	3	386045	Screw	Bolt, Hex, M8 X 45, 8.8, Start Year: 01/01/1979
7	1	SBA340010392	Valve, Hydraulic	Valve Assy., Start Year: 01/01/1979
8	2	87016617	Washer, Lock	Washer, #8, Start Year: 01/01/1979
9	2	43130	Bolt	Screw, Hex, M8 X 50, 8.8, Start Year: 01/01/1979
10	1	SBA340200060	Shaft	Shaft, Start Year: 01/01/1979
11	2	SBA026100016	Washer	Washer, #16, Start Year: 01/01/1979
12	2	SBA399340070	Washer	Washer, Start Year: 01/01/1979
13	1	130045	Pin	Pin, M5 X 26, Slotted, Start Year: 01/01/1979
14	1	SBA022200016	Nut	Nut, Castle, M16 X 15, Start Year: 01/01/1979
15	1	PL	Procure Locally	Pin, Start Year: 01/01/1979
16	1	SBA340292281	Lever	Lever, Start Year: 01/01/1979
17	1	SBA052100100	O-ring	O-ring, Start Year: 01/01/1979
18	1	SBA340200050	Shaft	Shaft, Start Year: 01/01/1979
19	1	9511934	Pin, Lock	Pin, 5 X 20, Start Year: 01/01/1979
20	1	SBA344220080	Plate	Plate, Start Year: 01/01/1979
21	4	86511315	Washer	Washer, M8 X 16 X 1.6, Start Year: 01/01/1979
22	4	PL	Procure Locally	Pin, Start Year: 01/01/1979
23	1	SBA344200070	Rod	Rod, Start Year: 01/01/1979
24	1	86511315	Washer	Washer, M8 X 16 X 1.6, Start Year: 01/01/1979
25	1	SBA344220090	Plate	Plate, Start Year: 01/01/1979
26	1	SBA398210950	Spring	Spring, Start Year: 01/01/1979
27	7	80681	Washer, Lock	Washer, Lock, 5/16", Start Year: 01/01/1979
28	6	43128	Bolt	Bolt, Hex, M8 X 30, 8.8, Start Year: 01/01/1979
29	1	43127	Bolt	Bolt, Hex, M8 X 25, 8.8, Start Year: 01/01/1979
30	1	SBA340250041	Guide	Guide Assy., Lever Includes: Ref. 31 Thru 40, Start Year: 01/01/1979
31	1	SBA390370280	Decal	Decal, Start Year: 01/01/1979
33	1	SBA340290970	Stop	Stopper, Start Year: 01/01/1979
34	1	SBA399340060	Washer	Washer, Start Year: 01/01/1979
35	1	SBA398180331	Handle Grip	Grip, Years: 01/01/1979-06/30/1988
35	1	SBA398180332	Handle Grip	Grip, Start Year: 07/01/1988
36	1	SBA399560960	Plate	Plage, Start Year: 01/01/1979
37	2	86511315	Washer	Washer, M8 X 16 X 1.6, Start Year: 01/01/1979
38	2	80681	Washer, Lock	Washer, Lock, 5/16", Start Year: 01/01/1979

39	2	89706690	Nut	Nut, M8, Cl 8, Start Year: 01/01/1979
40	2	16043224	Bolt	Bolt, Hex, M8 X 16, 8.8, Full Thd, Start Year: 01/01/1979
41	1	SBA340100330	Lever	Lever, Start Year: 01/01/1979
42	1	SBA398180171	Handle Grip	Grip, Start Year: 01/01/1979
43	1	SBA344900251	Bracket	Bracket, Start Year: 03/01/1980
43	1	SBA344900180	Bracket	Bracket, Years: 01/01/1979-02/28/1980
44	3	PL	Procure Locally	Washer, #6, Start Year: 01/01/1979
45	3	SBA011100612	Bolt	Bolt, M6 X 12, Start Year: 01/01/1979
46	2	80681	Washer, Lock	Washer, Lock, 5/16", Start Year: 01/01/1979
47	AR	16043224	Bolt	Bolt, Hex, M8 X 16, 8.8, Full Thd, Start Year: 01/01/1979
48	2	SBA052100210	O-ring	O-ring, Start Year: 01/01/1979
49	1	SBA340600580	Tube, Rigid	Pipe Assy., Oil, 1700, Start Year: 01/01/1979
49	1	SBA340600600	Pipe	Pipe Assy., Oil, 1900, Start Year: 01/01/1979
50	1	SBA398480240	Bolt, Banjo	Nipple, 3/8", Start Year: 01/01/1979