

# ***Part List Manual***

***Lx Series Compact Tractor Loader***

---

***CL600***

Cub Cadet Yanmar LLC  
P.O. Box 361052  
Cleveland, Ohio 44136-1052

PRINTED IN U.S.A.

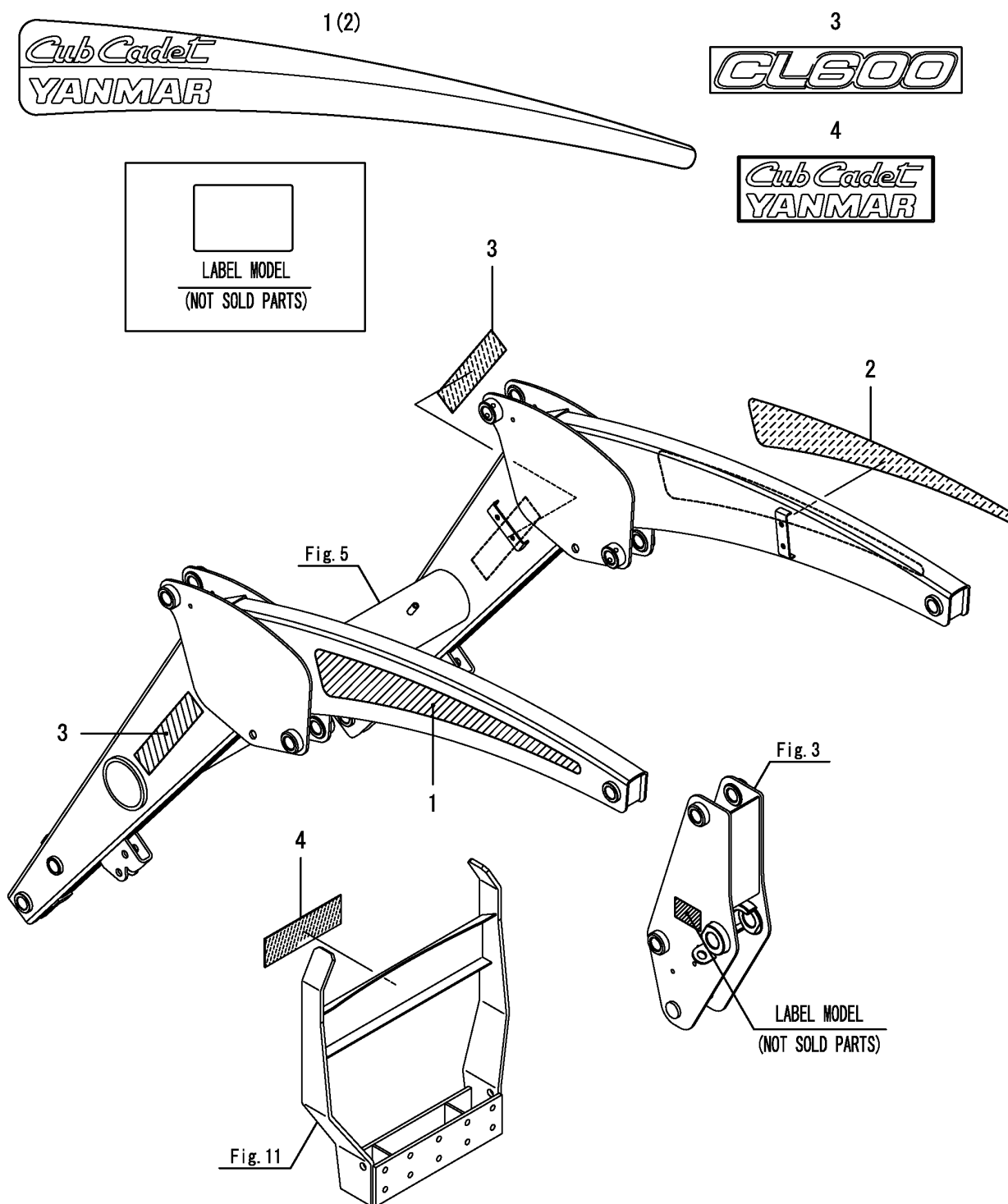
Form No. 769-06832  
March 21, 2011

## Notes

## Loader Section Index

<b>Fig. No.</b>	<b>Group Name</b>
1.	Label
2.	Label-Safety
3.	Support Frame
4.	Bracket
5.	Boom
6.	Quick Attach
7.	Dump Link
8.	Indicator
9.	Cylinder
10.	Hydraulic Piping
11.	Protector
12.	Stand
13.	Bucket

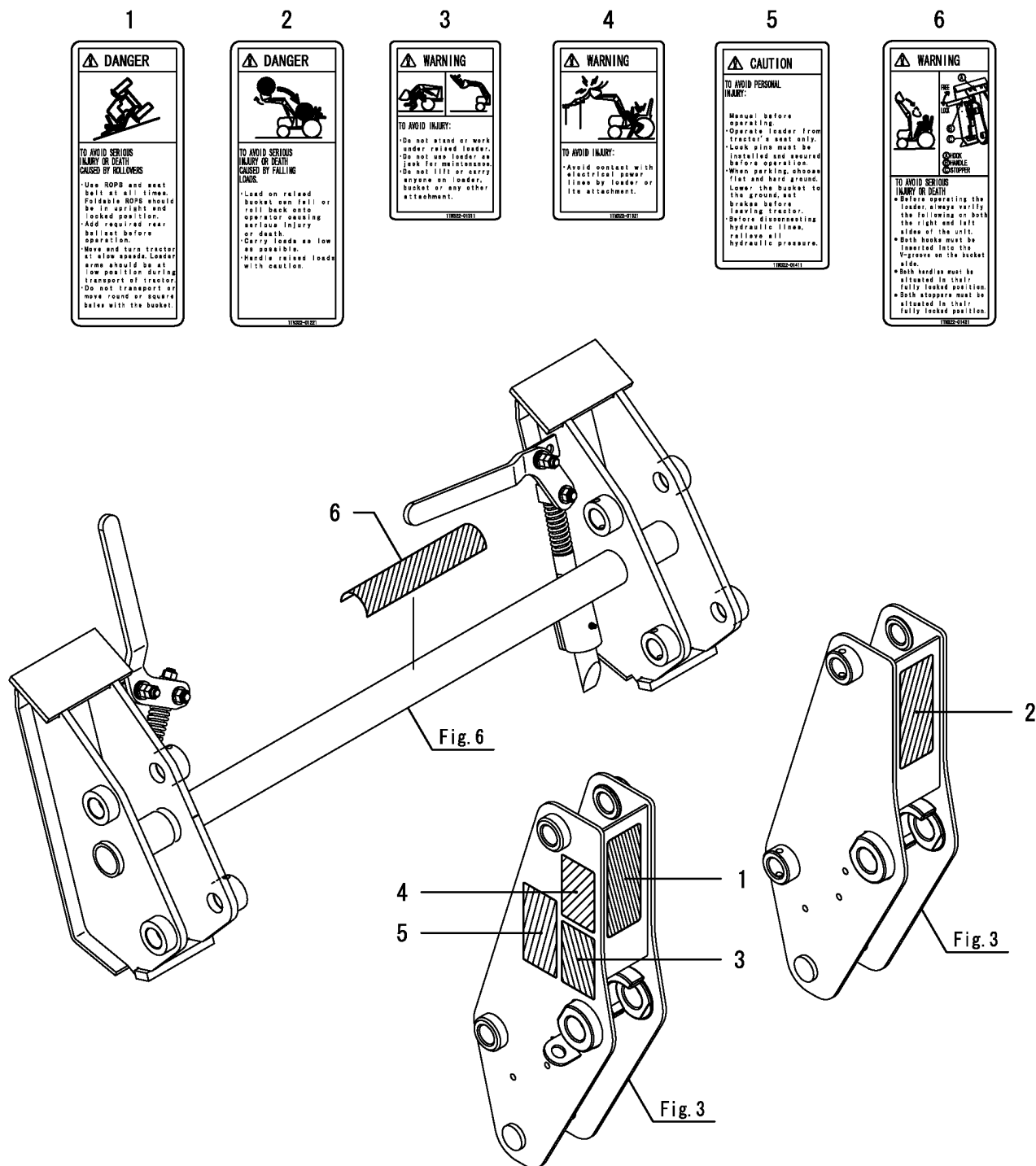
Fig 1. Label



**Fig 1. Label**

<b>Ref.</b>	<b>Part Number</b>	<b>Description</b>	<b>Qty</b>
1	CY-1TN322-01510	LABEL, LOGO L.H.	1
2	CY-1TN322-01520	LABEL, LOGO R.H.	1
3	CY-1TN323-01550	LABEL, NAME CL600	2
4	CY-1TN322-01630	LABEL, GRILL GAURD	1

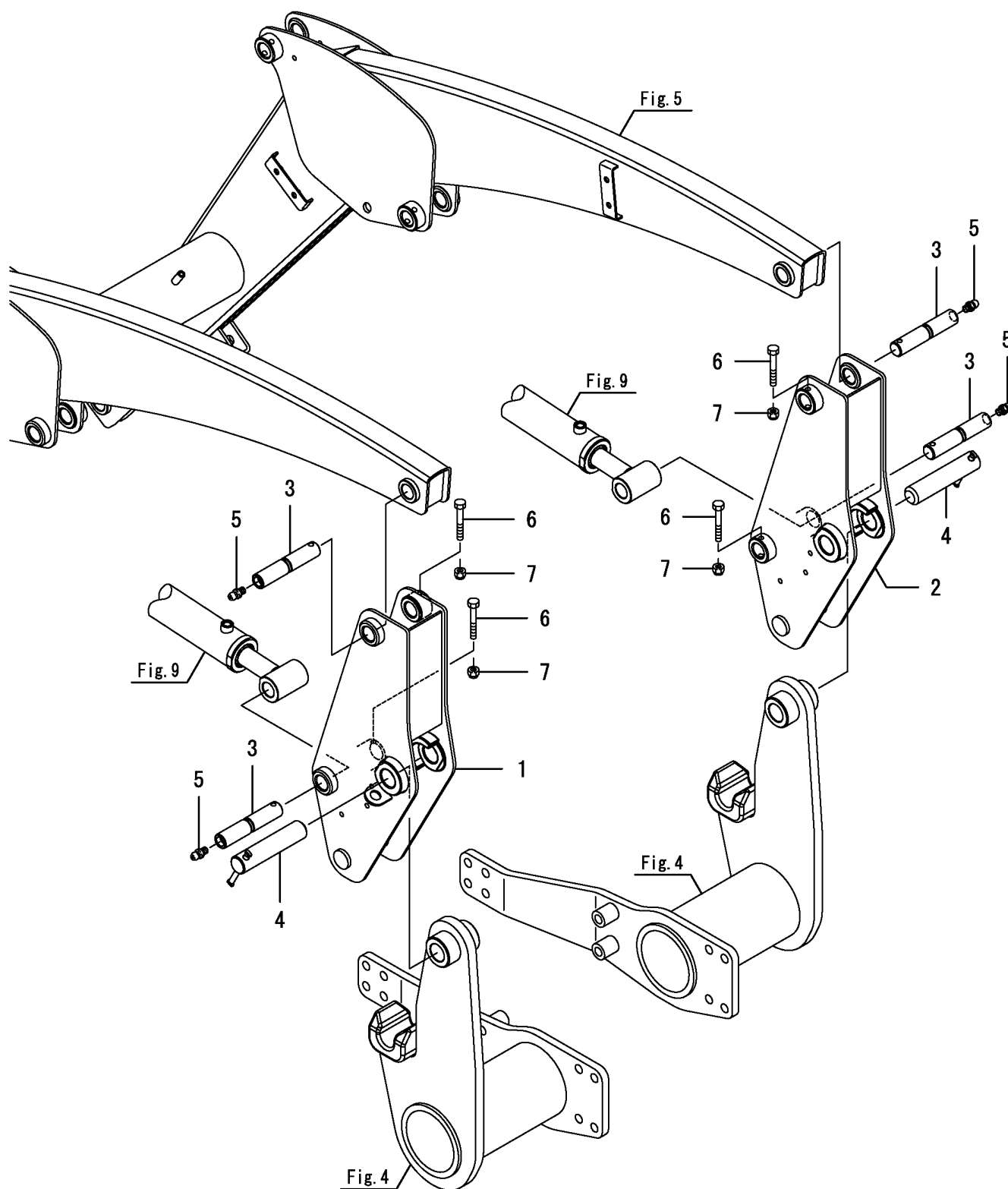
Fig 2. Label-Safety



**Fig 2. Label-Safety**

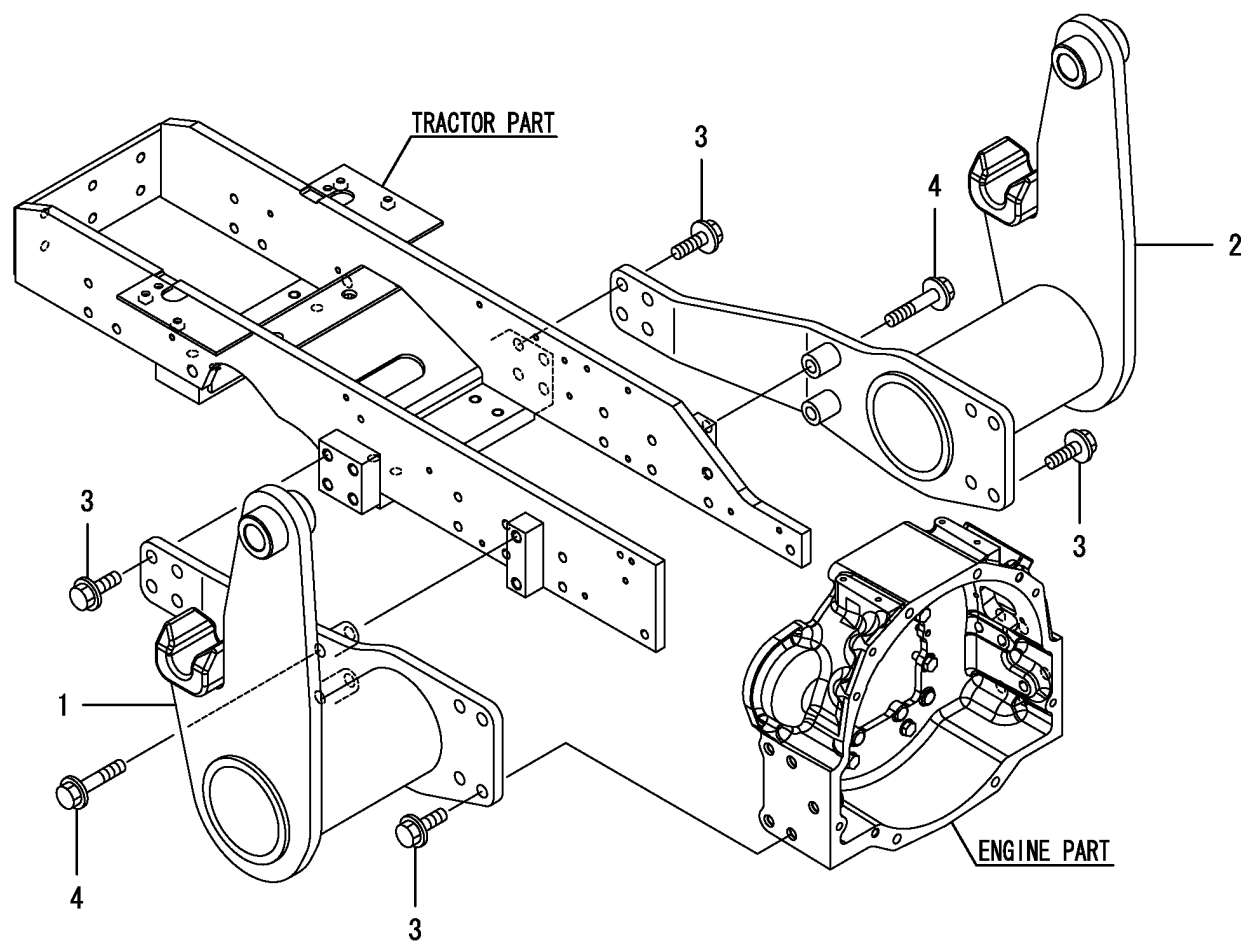
Ref.	Part Number	Description	Qty
1	CY-1TN322-01211	LABEL, DANGER ROLL	1
2	CY-1TN322-01221	LABEL, DANGER FALL	1
3	CY-1TN322-01311	LABEL, WARNING	1
4	CY-1TN322-01321	LABEL, WARNING SHOCK	1
5	CY-1TN322-01411	LABEL, CAUTION	1
6	CY-1TN322-01421	LABEL, WARNING QUICK	1

Fig 3. Support Frame



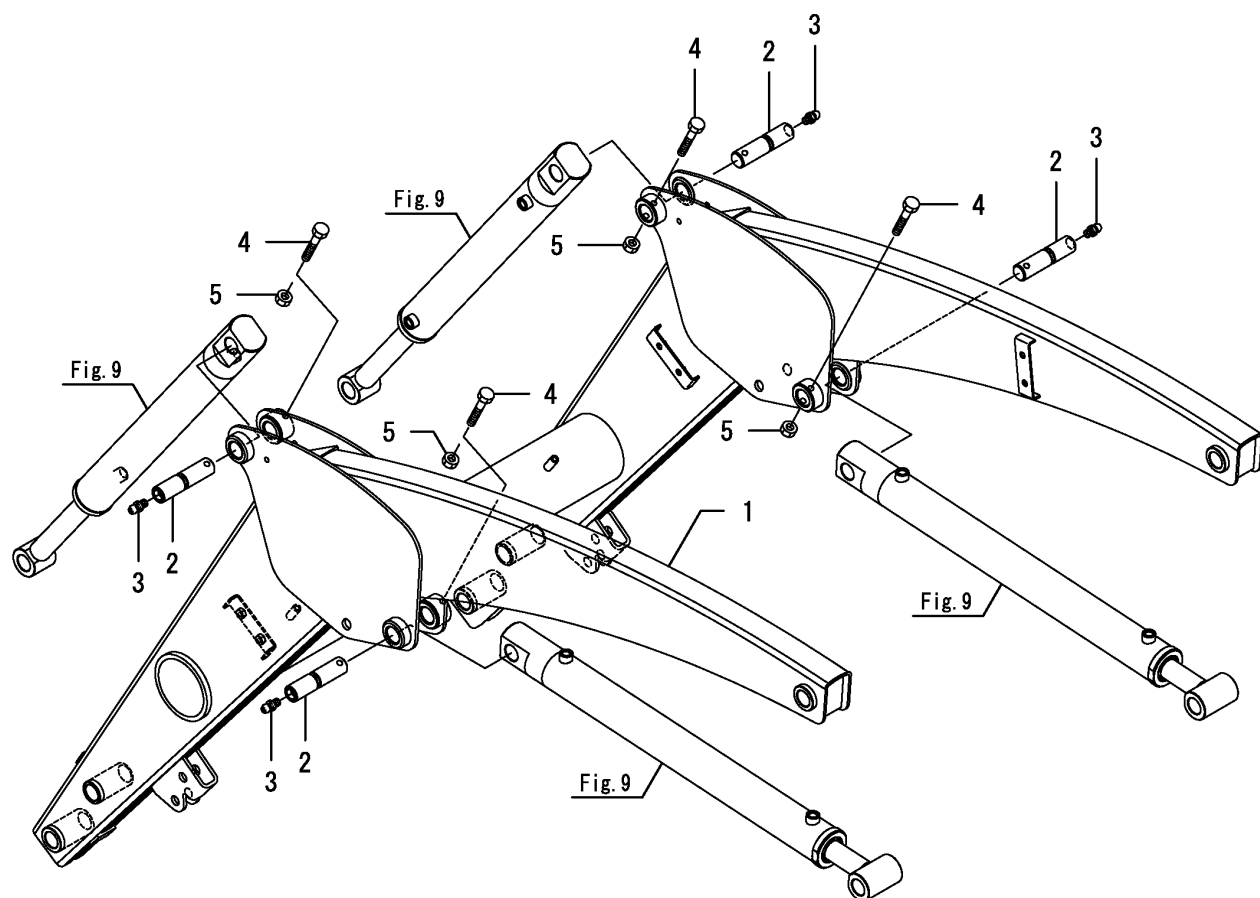
**Fig 3. Support Frame**

Ref.	Part Number	Description	Qty
1	CY-1TN323-11010	SUPPORT M ASSY, L	1
2	CY-1TN323-11020	SUPPORT M ASSY, R	1
3	CY-1TN323-73130	9/8-150 PIN	4
4	CY-1TN322-73310	LOCK PIN CMP	2
5	CY-24761-010000	NIPPLE M6F, GREASE	4
6	CY-26116-080602	BOLT M 8X 60 PLATED	4
7	CY-26346-080002	U-NUT M 8	4

**Fig 4. Bracket**

**Fig 4. Bracket**

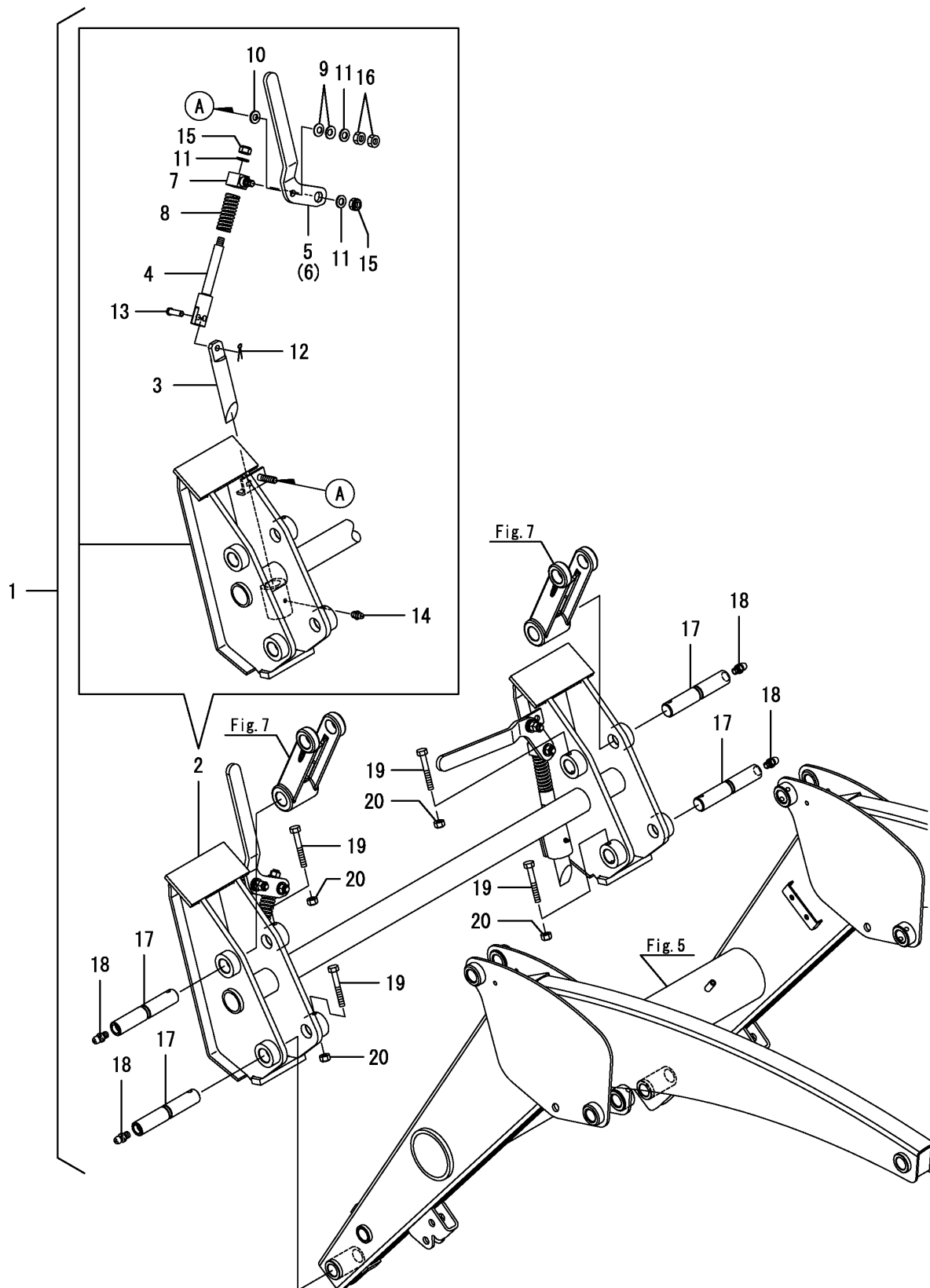
Ref.	Part Number	Description	Qty
1	CY-1TN323-13100	BRACKET ASSY, L	1
2	CY-1TN323-13200	BRACKET ASSY, R	1
3	CY-1TN323-16450	BOLT, M16X45	16
4	CY-1TN323-16800	BOLT, M16X80	4

**Fig 5. Boom**

**Fig 5. Boom**

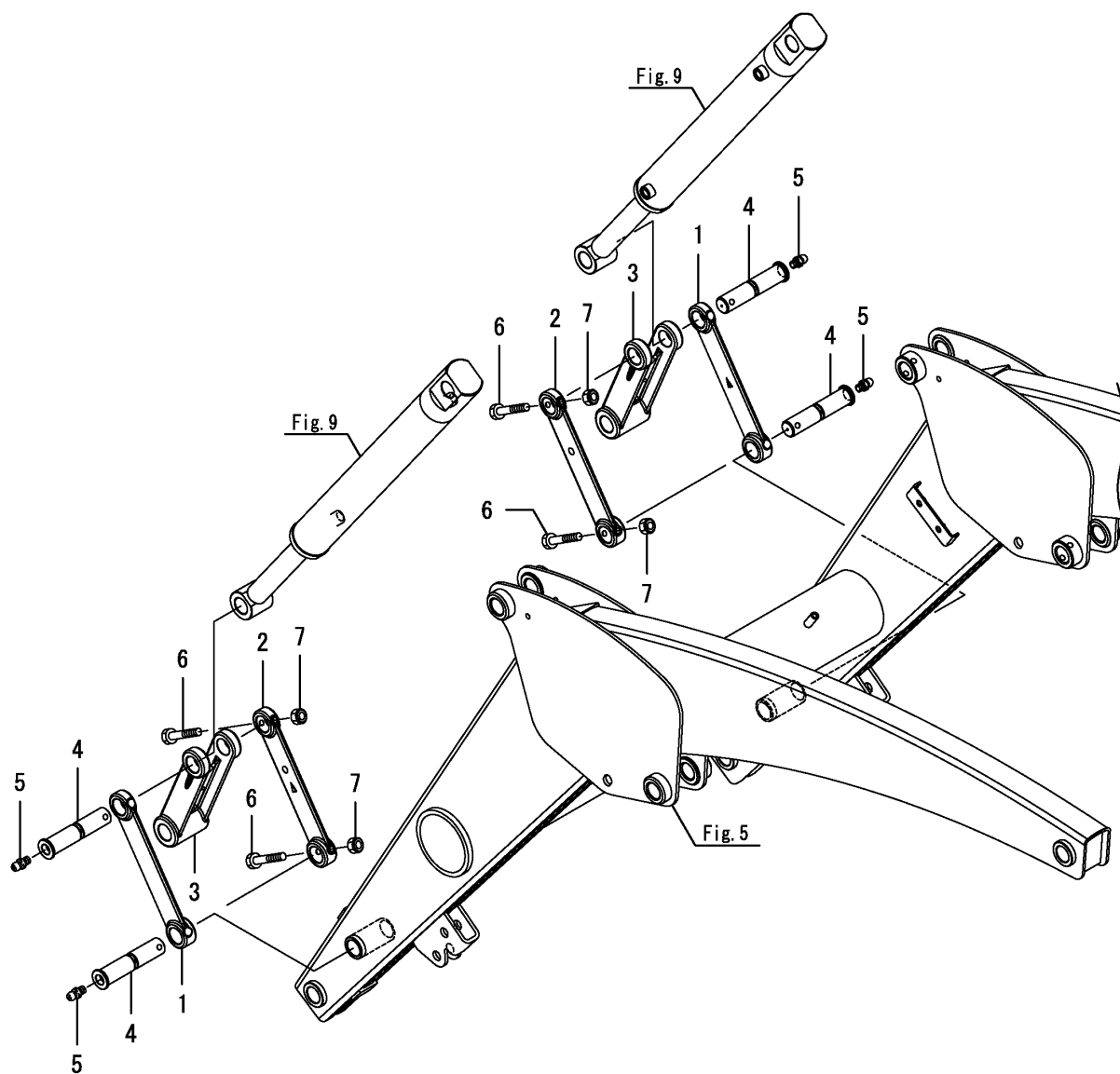
Ref.	Part Number	Description	Qty
1	CY-1TN323-21000	BOOM ASSY	1
2	CY-1TN323-73110	9/8-120 PIN	4
3	CY-24761-010000	NIPPLE M6F, GREASE	4
4	CY-26116-080602	BOLT M 8X 60 PLATED	4
5	CY-26346-080002	U-NUT M 8	4

Fig 6. Quick Attach



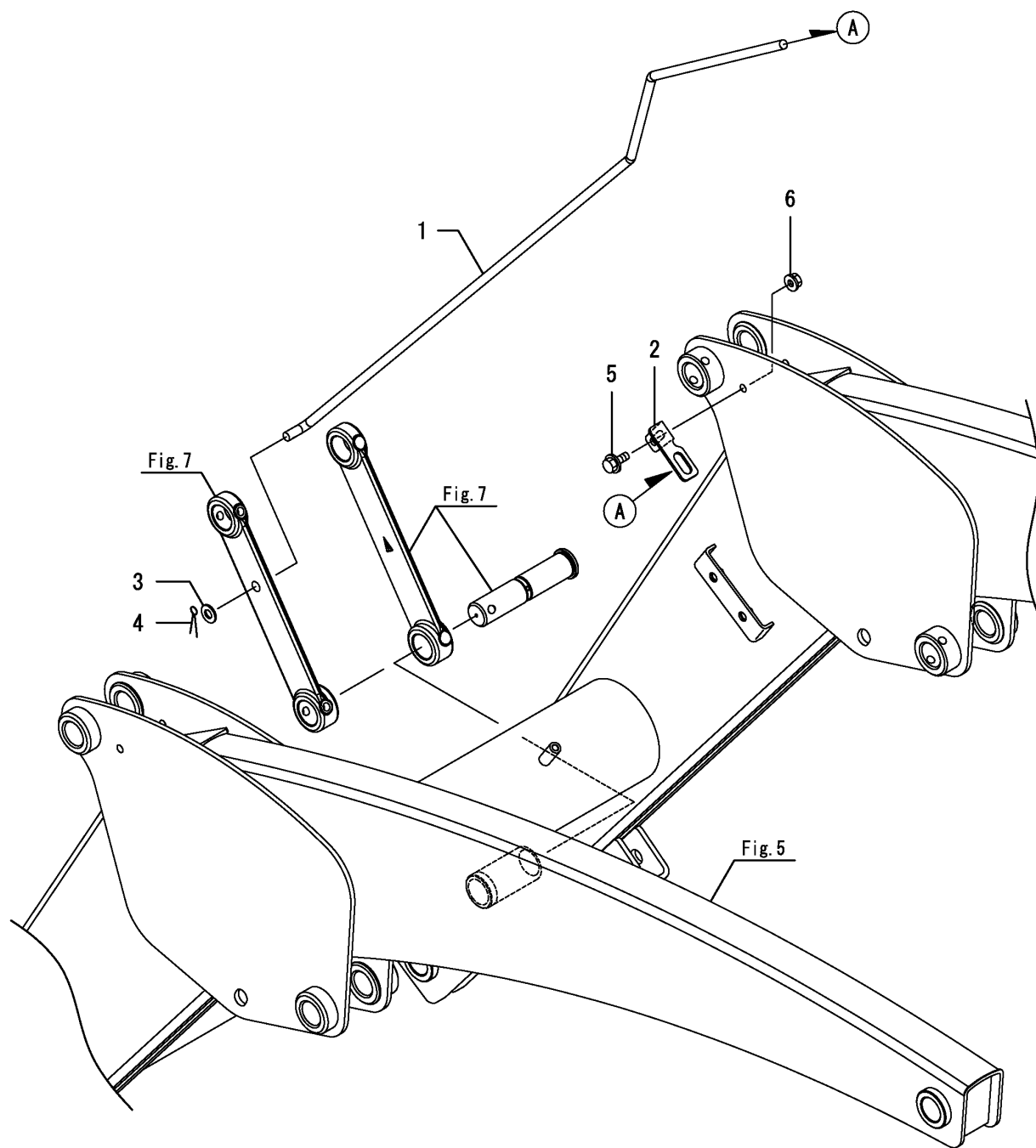
**Fig 6. Quick Attach**

Ref.	Part Number	Description	Qty
1	CY-1TN323-23010	QUICK KIT, UNIVERSAL	1
2	CY-1TN323-23090	QUICK M ASSY	1
3	CY-1TN323-23310	PIN, QUICK	2
4	CY-1TN323-23330	SHAFT, QUICK	2
5	CY-1TN323-23350	LEVER L, QUICK	1
6	CY-1TN323-23360	LEVER R, QUICK	1
7	CY-1TN323-23370	SLIDER, QUICK	2
8	CY-1TN323-23390	SPRING	2
9	CY-194151-47760	WASHER 12	4
10	CY-194310-47790	PLATE, FRICTION	2
11	CY-22137-120000	WASHER 12,POLISHED	6
12	CY-22417-160160	COTTER PIN 1.6X16	2
13	CY-22487-100300	PIN 10X 30	2
14	CY-24761-010000	NIPPLE M6F, GREASE	2
15	CY-26346-120002	U-NUT, M12	4
16	CY-26716-120002	NUT 12	4
17	CY-1TN323-73150	9/8-160 PIN	4
18	CY-24761-010000	NIPPLE M6F, GREASE	4
19	CY-26116-080602	BOLT M 8X 60 PLATED	4
20	CY-26346-080002	U-NUT M 8	4

**Fig 7. Dump Link**

**Fig 7. Dump Link**

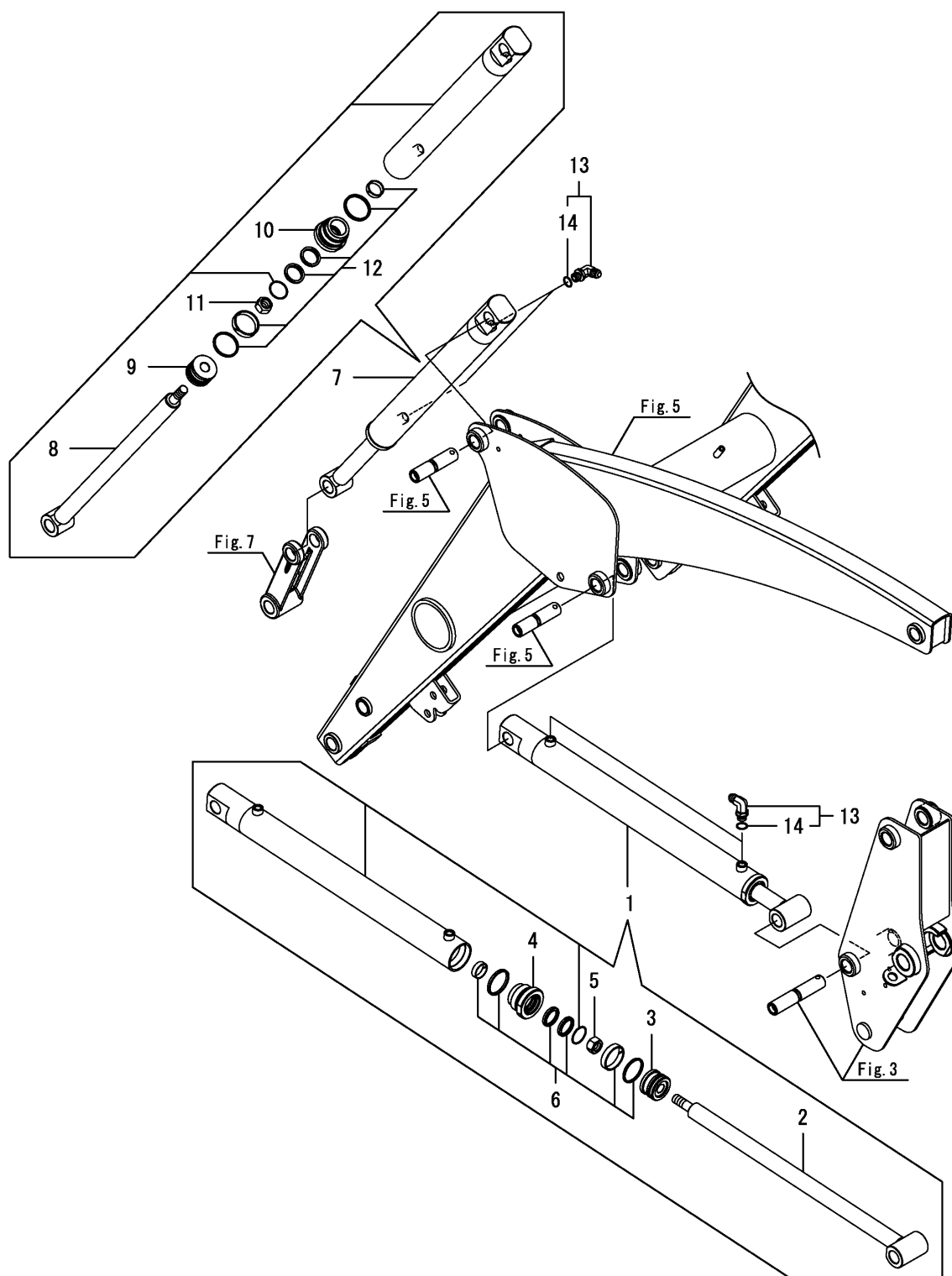
Ref.	Part Number	Description	Qty
1	CY-1TN323-25110	DUMP LINK OUT	2
2	CY-1TN323-25120	DUMP LINK IN	2
3	CY-1TN323-25130	DUMP LINK FRONT	2
4	CY-1TN323-73210	9/8 STEPPED PIN 140	4
5	CY-24761-010000	NIPPLE M6F, GREASE	4
6	CY-26116-080602	BOLT M 8X 60 PLATED	4
7	CY-26346-080002	U-NUT M 8	4

**Fig 8. Indicator**

**Fig 8. Indicator**

Ref.	Part Number	Description	Qty
1	CY-1TN323-33110	LEVEL INDICATOR	1
2	CY-1TN323-33310	STAY, INDICATOR	1
3	CY-22137-100000	WASHER 10,POLISHED	1
4	CY-22417-250300	COTTER PIN 2.5X30	1
5	CY-26106-080162	BOLT M 8X 16 PLATED	1
6	CY-26366-080002	NUT M 8	1

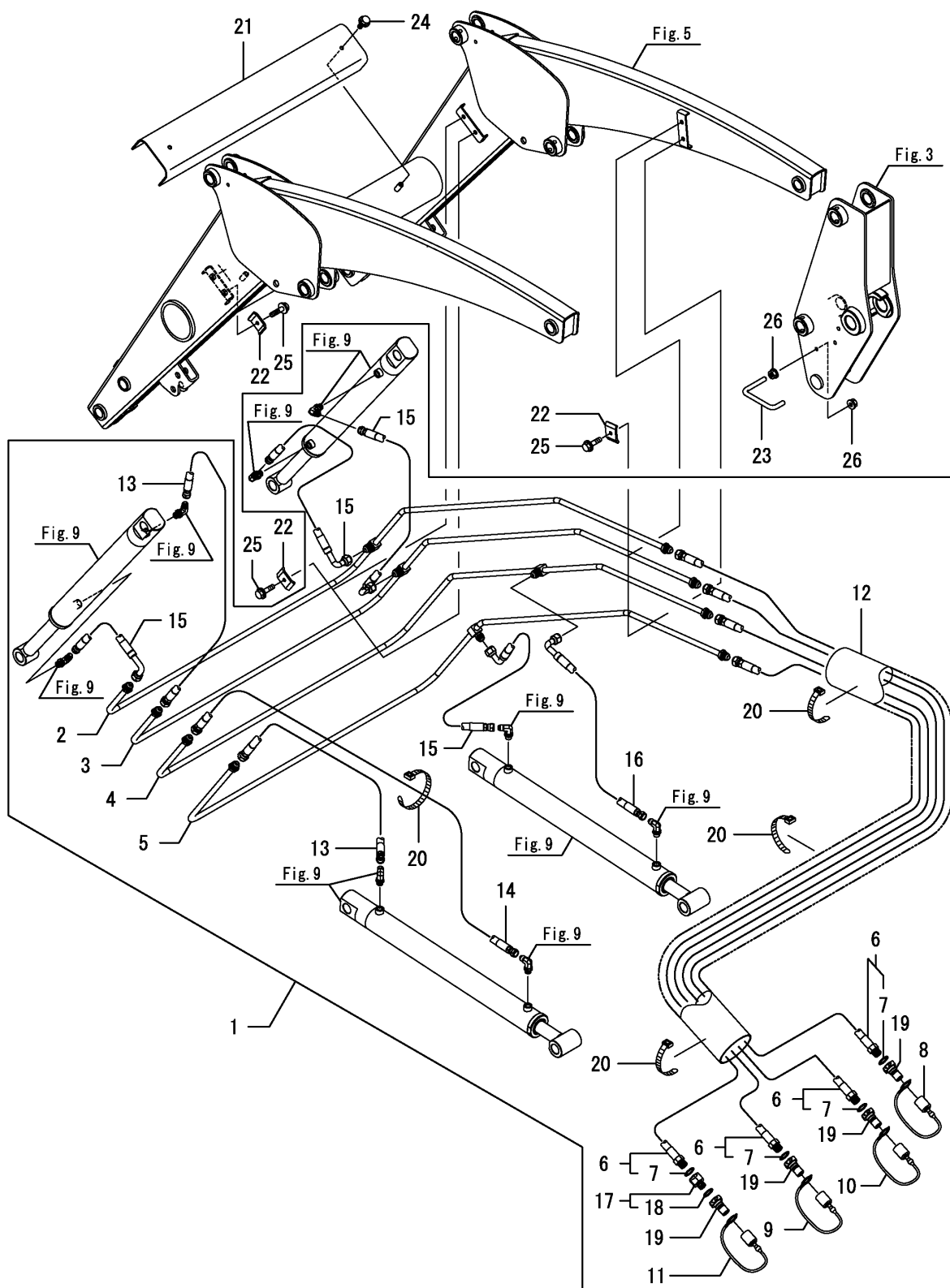
Fig 9. Cylinder



**Fig 9. Cylinder**

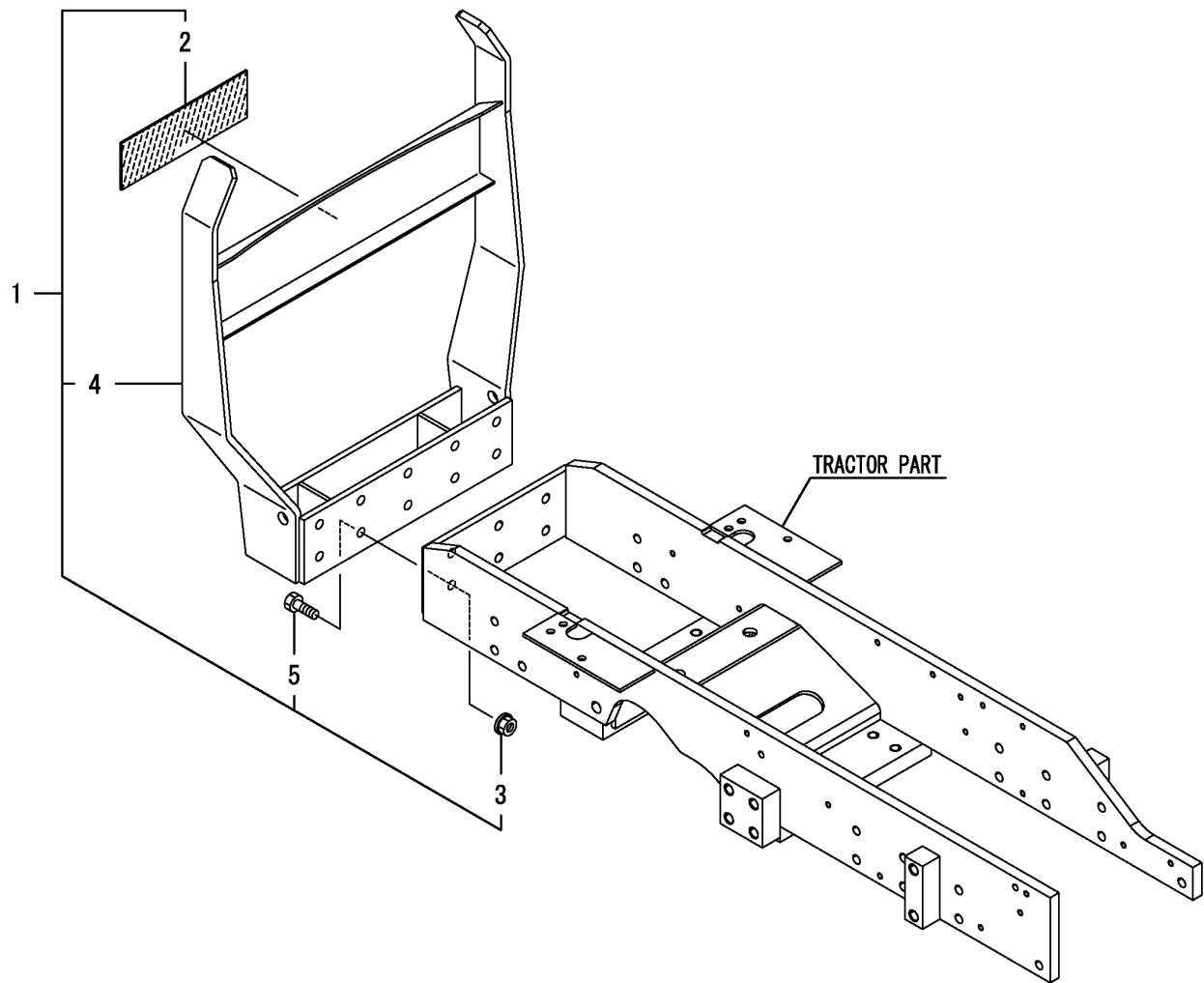
Ref.	Part Number	Description	Qty
1	CY-1TN323-38100	LIFT CYLINDER ASSY	2
2	CY-1TN323-38110	WELDED ROD CPL, LIFT	2
3	CY-1TN323-38310	PISTON	2
4	CY-1TN323-38330	HEAD	2
5	CY-1TN323-38340	SELF LOCKING NUT	2
6	CY-1TN323-38370	SEAL KIT	2
7	CY-1TN323-38200	DUMP CYLINDER ASSY	2
8	CY-1TN323-38210	WELDED ROD CPL, DUMP	2
9	CY-1TN323-38310	PISTON	2
10	CY-1TN323-38330	HEAD	2
11	CY-1TN323-38340	SELF LOCKING NUT	2
12	CY-1TN323-38370	SEAL KIT	2
13	CY-1TN322-38910	JOINT,90SAE9/16-18	8
14	CY-1TN322-38930	PACKING, JOINT	8

Fig 10. Hydraulic Piping



**Fig 10. Hydraulic Piping**

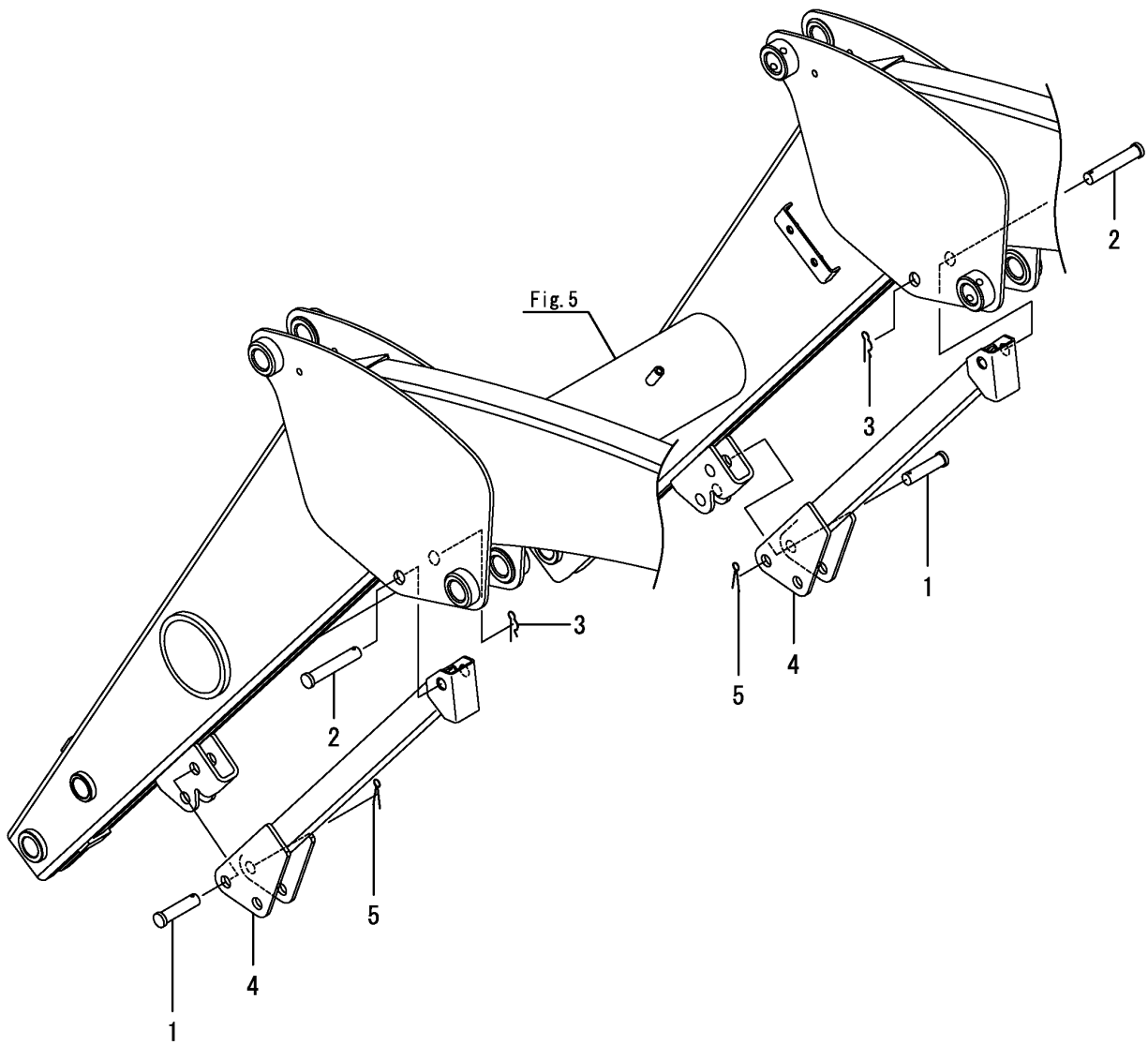
Ref.	Part Number	Description	Qty
1	CY-1TN323-41100	HYDRAULIC LINE ASSY	1
2	CY-1TN323-41110	HP PIPE, TILT	1
3	CY-1TN323-41120	HP PIPE, DUMP	1
4	CY-1TN323-41130	HP PIPE, DOWN	1
5	CY-1TN323-41140	HP PIPE, RAISE	1
6	CY-1TN322-41710	HP HOSE,INTAKE RED	4
7	CY-194464-45930	O-RING 8-1	4
8	CY-1TN322-41750	DUST PLUG,M RED	1
9	CY-1TN322-41760	DUST PLUG,M BLUE	1
10	CY-1TN322-41770	DUST PLUG,M YELLOW	1
11	CY-1TN322-41780	DUST PLUG,M GREEN	1
12	CY-1TN322-41790	COVER,HOSE INTAKE	1
13	CY-1TN322-41810	HP HOSE 3/8-500 CMP	2
14	CY-1TN322-41850	HP HOSE 3/8-1100 CMP	1
15	CY-1TN322-41870	HP HOSE,R-F 500 CMP	4
16	CY-1TN322-41890	HP HOSE,R-F 650 CMP	1
17	CY-1TN322-41970	FITTING,ORIFICE	1
18	CY-194464-45930	O-RING 8-1	1
19	CY-1A8160-48820	COUPLER,QUICK 3/8M	4
20	CY-1A8300-51210	BAND, REPEAT	4
21	CY-1TN322-41510	COVER, PIPE	1
22	CY-1TN322-41550	COVER, CLAMP	6
23	CY-1TN325-41730	CLAMP, HOSE	1
24	CY-26106-080162	BOLT M 8X 16 PLATED	2
25	CY-26106-080302	BOLT M 8X 30 PLATED	6
26	CY-26366-080002	NUT M 8	2

**Fig 11. Protector**

**Fig 11. Protector**

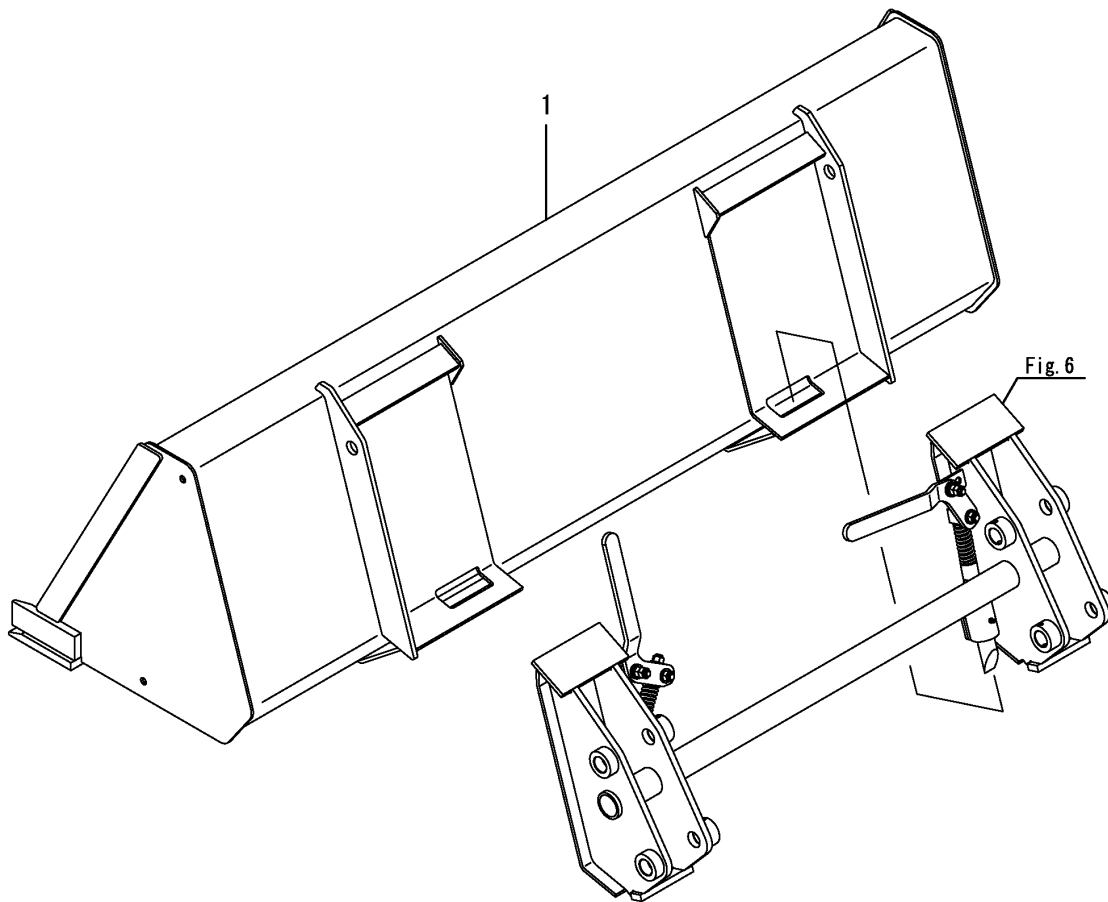
Ref.	Part Number	Description	Qty
1	CY-1TN322-51010	GRILLE GUARD KIT	1
2	CY-1TN322-01630	LABEL, GRILL GAURD	1
3	CY-194990-22160	NUT W/WASHER 12	6
4	CY-1TN322-51101	GRILLE GUARD CMP	1
5	CY-26116-120352	BOLT M12X 35 PLATED	6

Fig 12. Stand



**Fig 12. Stand**

Ref.	Part Number	Description	Qty
1	CY-1TN322-71130	PIN, 16 X 55	2
2	CY-1TN322-71150	PIN, 16 X 80	2
3	CY-1TN322-71170	BETA PIN	2
4	CY-1TN323-71300	STAND ASSY	2
5	CY-22417-320320	COTTER PIN 3.2X32	2

**Fig 13. Bucket**

**Fig 13. Bucket**

Ref.	Part Number	Description	Qty
1	N/A	BUCKET ASSY, QUICK Order From Wholegoods	1



***Lx Series Compact Tractor Loader***

---

***CL600***

Cub Cadet Yanmar LLC  
P.O. Box 361052  
Cleveland, Ohio 44136-1052

PRINTED IN U.S.A.