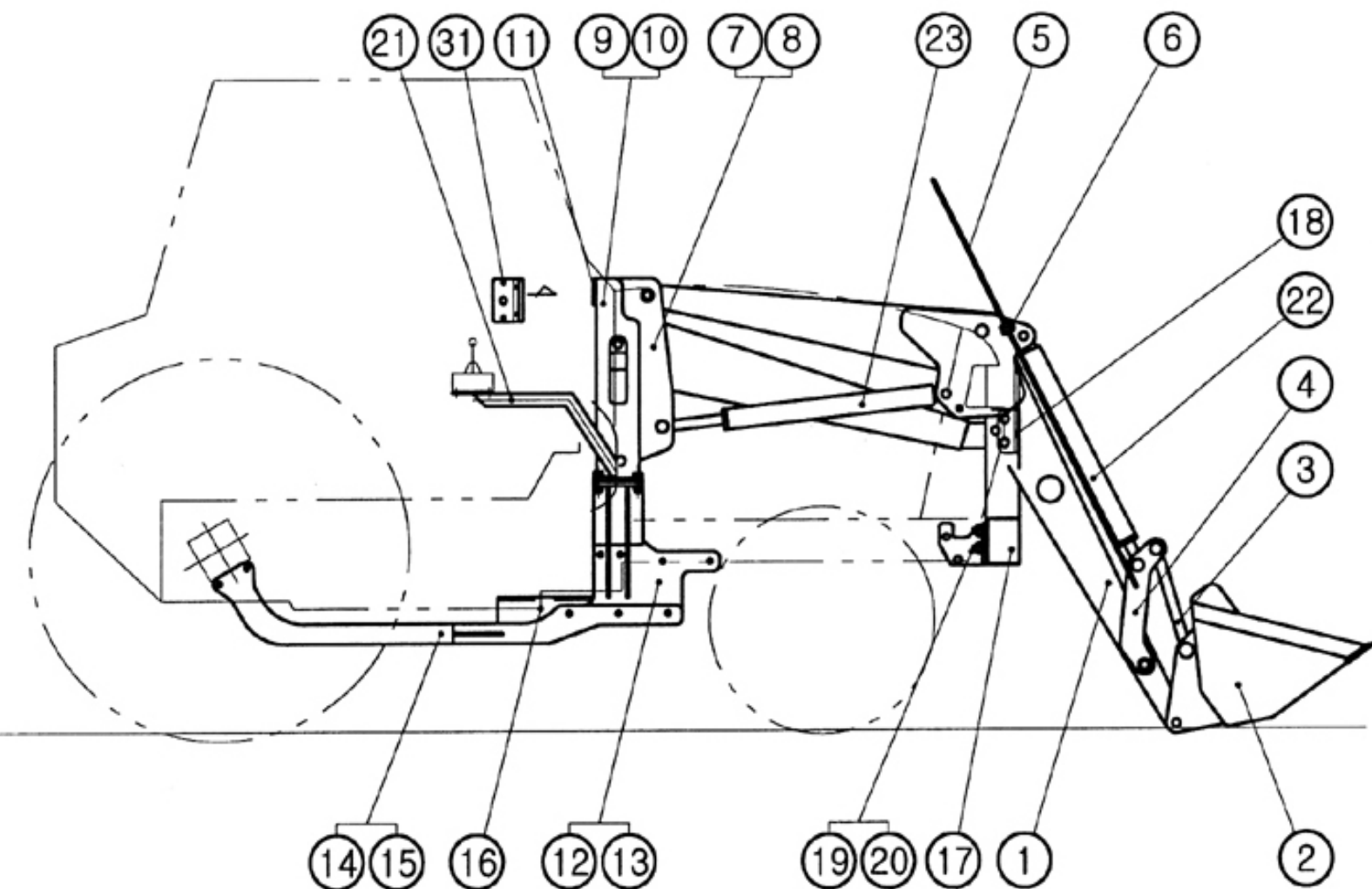
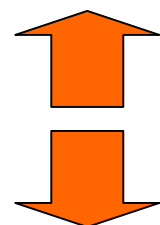


AL 40

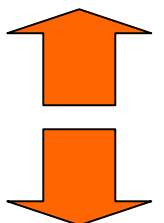
CHASSIS - LOADER



Retour
Back

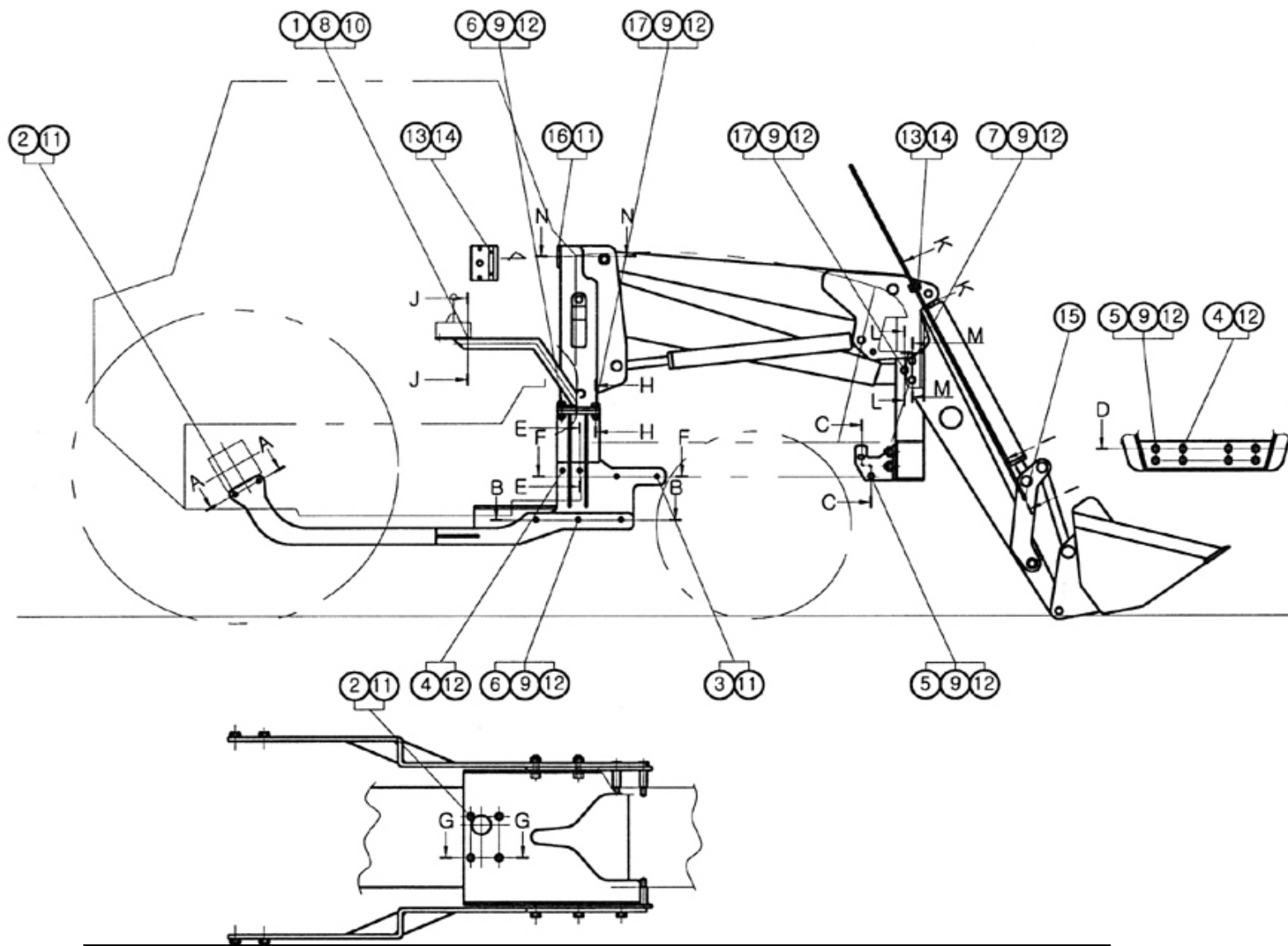


	Référence - P/N	DESCRIPTION	DESCRIPTION	Qté / Qty
1	ALE35-01-0000	BRAS	BOOM	1
2	ALE35-02-0000	GODET	BUCKET	1
3	ALE35-09-1000	TIGE DE GODET	ROD-BUCKET	2
4	ALE35-09-2000	BASCULEUR DE GODET	BRACKET BUCKET	2
5	ALE35-09-3100	INDICATEUR	INDICATOR	1
6	ALE35-09-3200	GLISSIERE	BRACKET INDICATOR	1
7	ALE40-03-1100	COLONNE DROITE	COLUMN,RH	1
8	ALE40-03-1200	COLONNE GAUCHE	COLUMN,LH	1
9	ALE35-03-2100	JAMBE DROITE	COLUMN - OUT RH	1
10	ALE35-03-2200	JAMBE GAUCHE	COLUMN - OUT LH	1
11	ALE35-04-1000	LIAISON TRANSVERSALE	CROSS MEMBER	1
12	ALE40-09-4100	FAUX-CHASSIS DROIT	SUB-FRAME , RH	1
13	ALE40-09-4200	FAUX-CHASSIS GAUCHE	SUB-FRAME , LH	1
14	ALE40-09-5100	AXE ARRIERE DROIT	BACK AXLE, RH	1
15	ALE40-09-5200	AXE ARRIERE GAUCHE	BACK AXLE, LH	1
16	ALE35-09-6100	PLAQUE VENTRALE	UNDER BAR	1
17	ALE35-09-7100	PARE-CHOC INFERIEUR	BUMPER - LWR	1
18	ALE35-09-7200	PARE-CHOC SUPERIEUR	BUMPER - HI	1
19	ALE35-09-7300	SUPPORT DROIT	BRACKET, RH	1
20	ALE35-09-7400	SUPPORT GAUCHE	BRACKET, LH	1
21	ALE35-09-8100	POTENCE	BRACKET - C/V	1
22	ALE35-05-1000	VERIN DE GODET	CYLINDER - BUCKET	2
23	ALE35-05-2000	VERIN DE BRAS	CYLINDER - BOOM	2
31	ALE35-09-8200	SUPPORT DE FEUX	BRACKET - SIGNAL	2

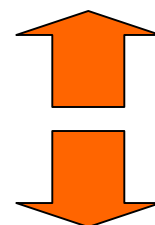


AL 40

Boulonnerie - Hardware

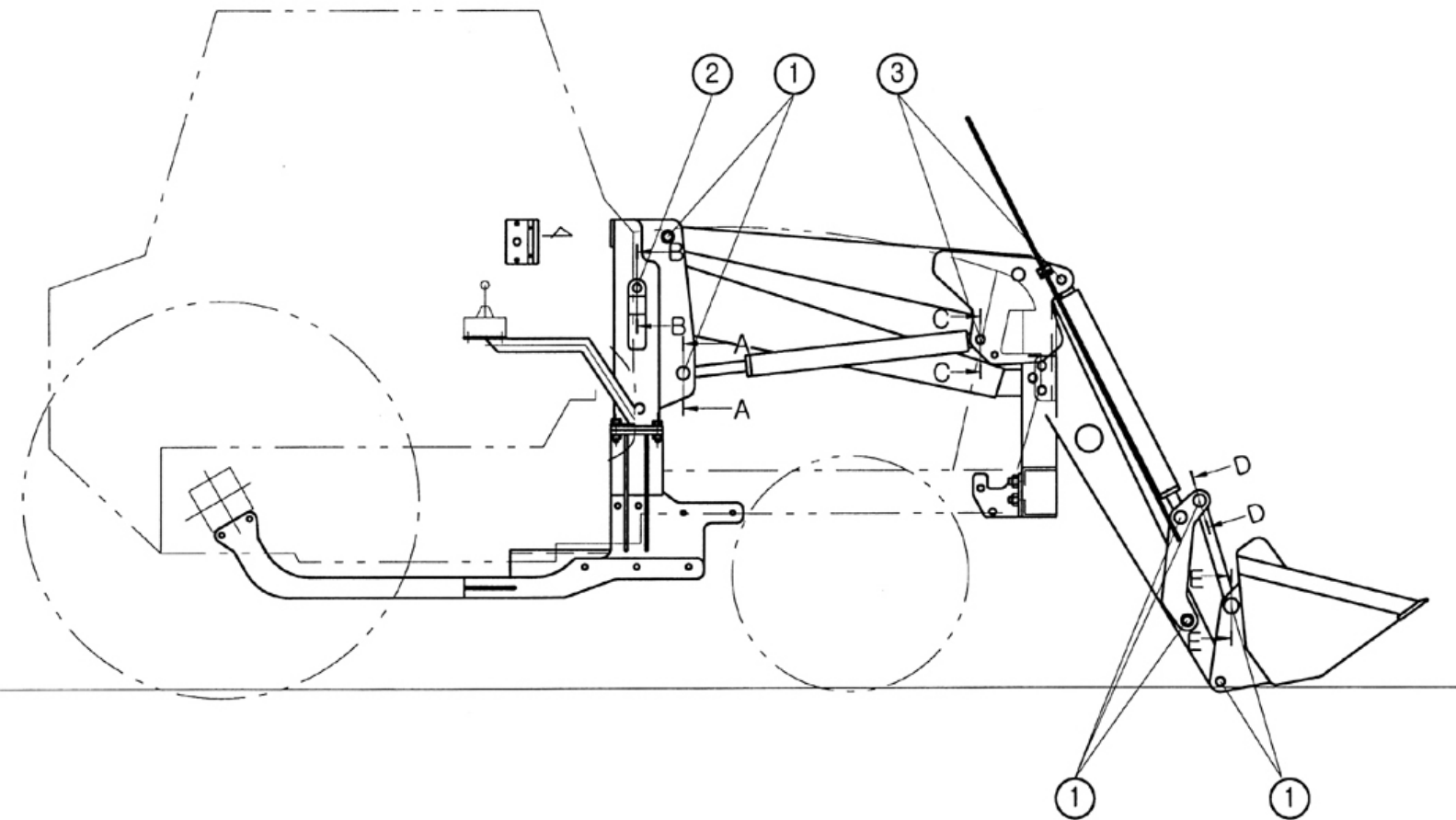


	DIMENSIONS	DESCRIPTION	DESCRIPTION	Qté / Qty
1	M8 X 65 L	BOULON	BOLT	3
2	M12 X 1,25P X 35L	BOULON	BOLT	8
3	M12 X 1,25P X 110L	BOULON	BOLT	4
4	M14 X 1,5P X 40L	BOULON	BOLT	12
5	M14 X 40L	BOULON	BOLT	8
6	M14 X 50L	BOULON	BOLT	8
7	M14 X 60L	BOULON	BOLT	4
8	M8	ECROU	NUT	3
9	M14	ECROU	NUT	28
10	M8	RONDELLE ELASTIQUE	SPRING WASHER	3
11	M12	RONDELLE ELASTIQUE	SPRING WASHER	16
12	M14	RONDELLE ELASTIQUE	SPRING WASHER	40
13	M6 X 15L	BOULON	BOLT	6
14	M6 X 15L	RONDELLE PLATE	PLAIN WASHER	6
15	Ø3 X 25L	GOUPILLE FENDUE	SPLIT PIN	1
16	M12 X 30L	BOULON	BOLT	4
17	M14 X 45 L	BOULON	BOLT	8

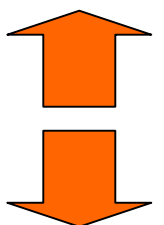


AL 40

Axes - Axles

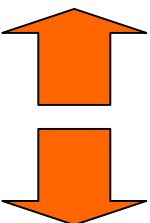
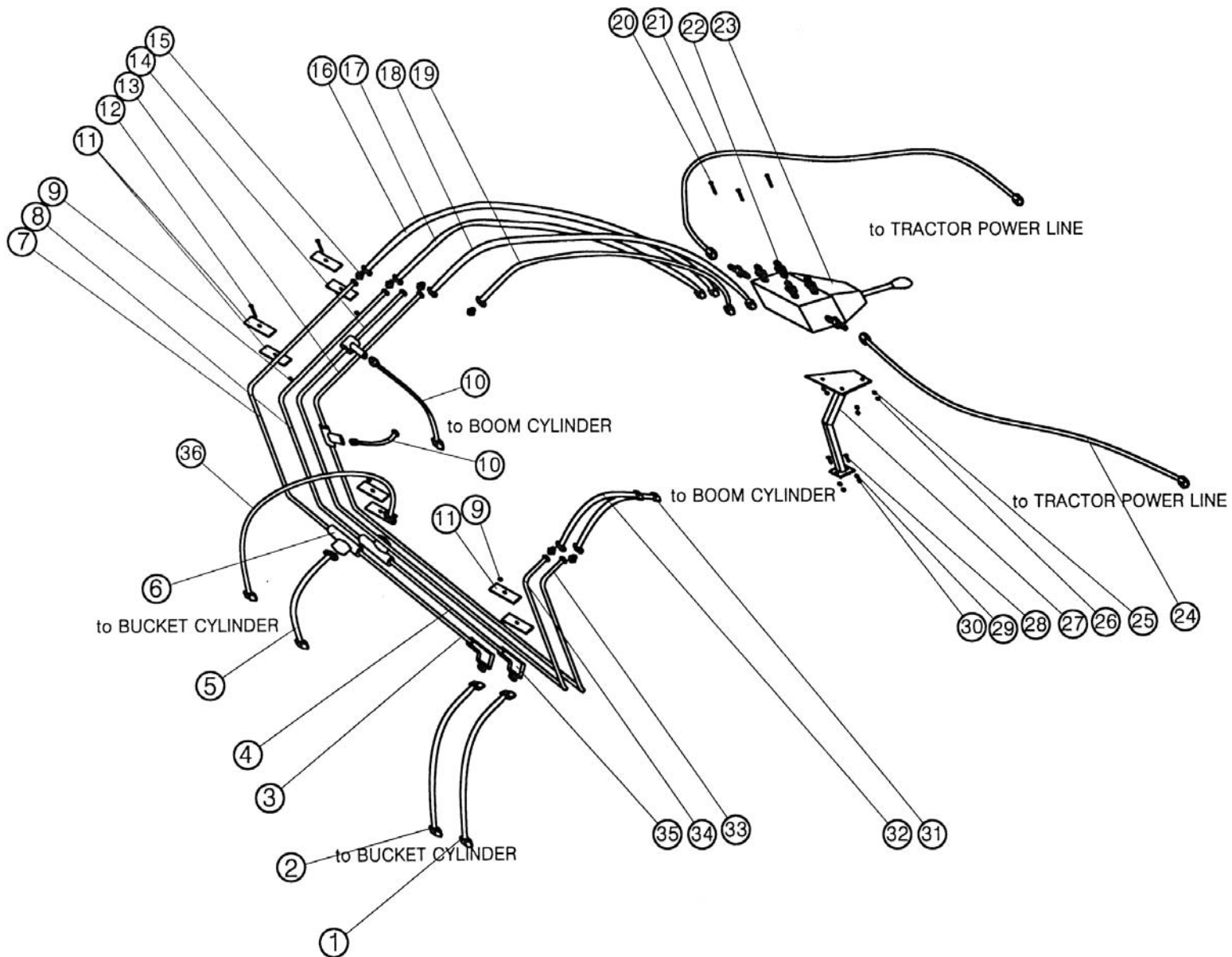


	DIMENSIONS	DESCRIPTION	DESCRIPTION	Qté / Qty
1	Ø25 X 120 L	AXE	PIN	14
2	Ø25 X 146 L	AXE	PIN	2
3	Ø25 X 112 L	AXE	PIN	4



AL 40

Hydraulique - Hydraulics



AL 40

Hydraulique - Hydraulics

	Référence - P/N	DESCRIPTION	DESCRIPTION	Qté / Qty
1	ALE35-08-1100	FLEXIBLE	HOSE	1
2	ALE35-08-1200	FLEXIBLE	HOSE	1
3	ALE35-07-1100	CONDUITE RIGIDE	PIPE	1
4	ALE35-07-1200	CONDUITE RIGIDE	PIPE	1
5	ALE35-08-1300	FLEXIBLE	HOSE	1
6	ALE35-07-9900	RACCORD EN T	TEE-NIPPLE	4
7	ALE35-07-1300	CONDUITE RIGIDE	PIPE	1
8	ALE35-07-1400	CONDUITE RIGIDE	PIPE	1
9	M6	ECROU	NUT	4
10	ALE35-08-1400	FLEXIBLE	HOSE	2
11	ALE35-07-3100	PLAQUE	PLATE	8
12	M6 X 50	BOULON	BOLT	4
13	ALE35-07-1500	CONDUITE RIGIDE	PIPE	1
14	ALE35-07-1600	CONDUITE RIGIDE	PIPE	1
15	ALE35-07-9800	RACCORD EN T	NIPPLE	4
16	ALE35-08-1500	FLEXIBLE	HOSE	1
17	ALE35-08-1600	FLEXIBLE	HOSE	1
18	ALE35-08-1700	FLEXIBLE	HOSE	1
19	ALE35-08-1800	FLEXIBLE	HOSE	1
20	M8 X 60	BOULON	BOLT	3
21	ALE35-08-1900	FLEXIBLE	HOSE	1
22	ALE35-07-7900	RACCORD	NIPPLE	6
23	ALE35-08-0010	DISTRIBUTEUR	CONTROL VALVE	1
24	ALE35-08-2000	FLEXIBLE	HOSE	1
25	M8	RONDELLE ELASTIQUE	SPRING WASHER	3
26	M8	ECROU	NUT	3
27	ALE35-07-9000	SUPPORT DE DISTRIBUTEUR	BRACKET - CONTROL V/V	1
28	M14 X 55	BOULON	BOLT	2
29	M14	RONDELLE ELASTIQUE	SPRING WASHER	2
30	M14	ECROU	NUT	2
31	ALE35-08-2100	FLEXIBLE	HOSE	1
32	ALE35-08-2200	FLEXIBLE	HOSE	1
33	ALE35-07-1700	CONDUITE RIGIDE	PIPE	1
34	ALE35-07-1800	CONDUITE RIGIDE	PIPE	1
35	ALE35-07-9600	COUDE	ELBOW	2
36	ALE35-08-2300	FLEXIBLE	HOSE	1

