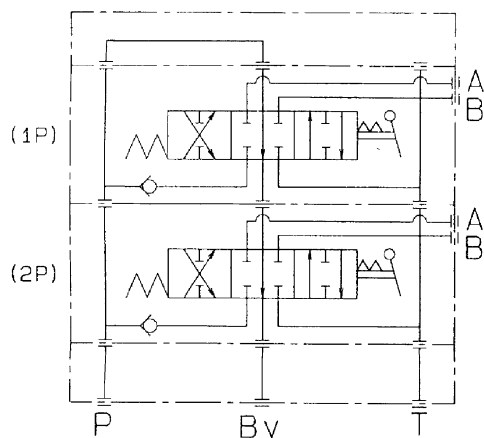


## INSTRUCTION MANUAL DOUBLE ACTING REMOTE HYDRAULIC CONTROL VALVE ASSEMBLY for KUBOTA TRACTOR B2630 / B3030

These remote valve assemblies are used to take hydraulic power out of the tractor hydraulic system and to send it by way of high-pressure hoses to an implement to be actuated.

### 1. HYDRAULIC CIRCUIT DIAGRAM

#### ■ Standard Type for All Models



4CAKAADAP003A

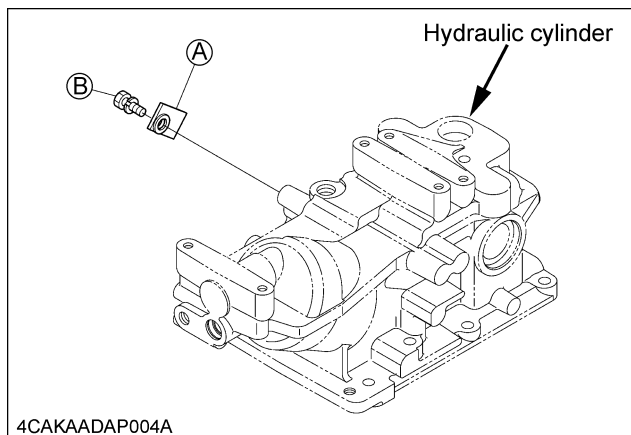
### 2. STANDARD

- (1) Hydraulic coupler joint : NPSF 1/2"
- (2) Max. pressure (tractor's relief valve)
  - [B2630]: 15.2 to 16.2 MPa  
(155 to 165 kgf/cm<sup>2</sup>)  
(2204 to 2349 psi)
  - [B3030]: 15.0 to 16.0 MPa  
(153 to 163 kgf/cm<sup>2</sup>)  
(2175 to 2320 psi)
- (3) Max. Flow rate
  - [B2630]: 21.2 L/min.
  - [B3030]: 19.7 L/min.

### 3. ASSEMBLY PROCEDURE

Check service package kit with attached parts list (page 4 to 5) to be certain all parts are included in the service package.

#### A. PRIOR TO MOUNTING REMOTE VALVE UNIT, REMOVE THE FOLLOWING PARTS.



4CAKAADAP004A

- (A) Plate - 1pc.
- (B) Bolt - 1pc.

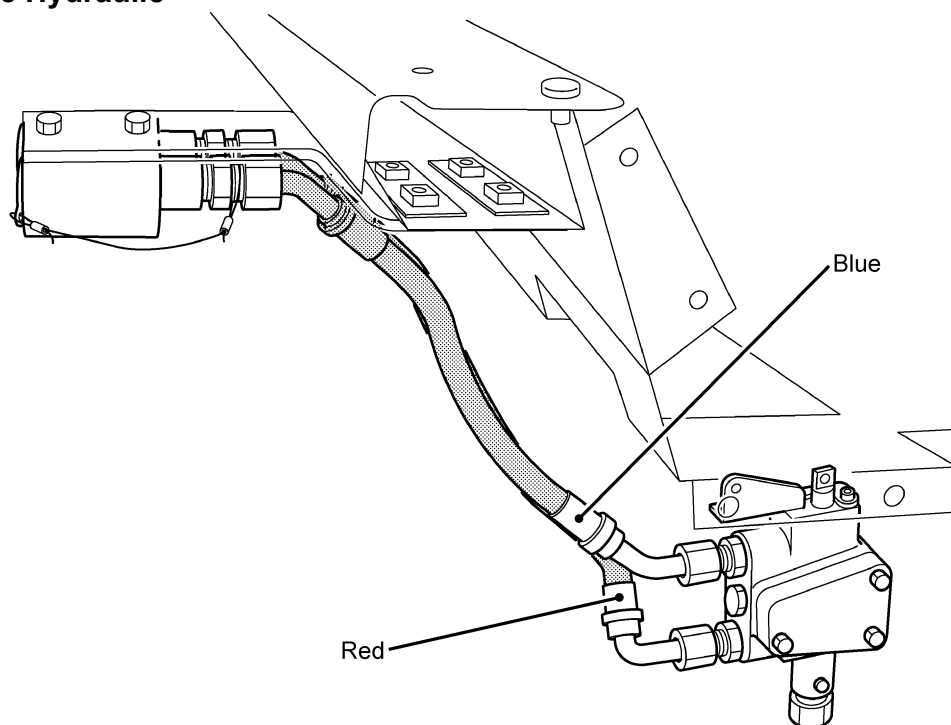
**B. ASSEMBLY REMOTE VALVE UNIT ACCORDING TO THE FOLLOWING PROCEDURE.  
(REFER TO THE ATTACHED PARTS LIST.)**

- (1) Place the new label (1) on the lever guide.
- (2) Attach the part (2).  
Tightening torque : 17.3 to 20.3 ft-lbs. (2.4 to 2.8 kgf-m)
- (3) Apply grease to the O-rings ((3),(4),(5),(6)) and place in the O-ring grooves on remote valve (7), pipe assembly (8) and return pipe (9).  
Assemble the parts (7), (8) and (10) by tightening the bolts (11) to the torque of 22.5-24.5 N-m.  
\* To add another valve, take the following steps. Disconnect the hydraulic hoses; remove the valve assemblies ((7), (8), (9) and (10)) from the tractor; remove the bolts (11); place the added valve in between; tighten up the 2nd-gang and 3rd-gang bolts (11); finally take the below steps (3) to (9).
- (4) Attach return pipe (9) to remote valve assembly.
- (5) Attach remote valve assembly to hydraulic cylinder (a) with bolts (12) and stud bolt (13).
- (6) After installing lever grips (14), attach control levers ((15),(16)) to remote valve assembly using joint pins (17), plain washers (18) and split pins (19).
- (7) Attach coupler stay 1 (20), and 2 (21) to rear fender cover using bolts (22).
- (8) Attach coupler (23) and holders (24) to coupler stay (20) using bolts ((25) or (26)), spring washers (27) and nuts (28).
- (9) Tighten the high pressure hoses securely to the remote valve assembly (10) and couplers (23) to avoid oil leakage.  
(Refer to the following drawings)  
Tightening torque : 36.2 to 43.4 ft-lbs. (5.0 to 6.0 kgf-m)

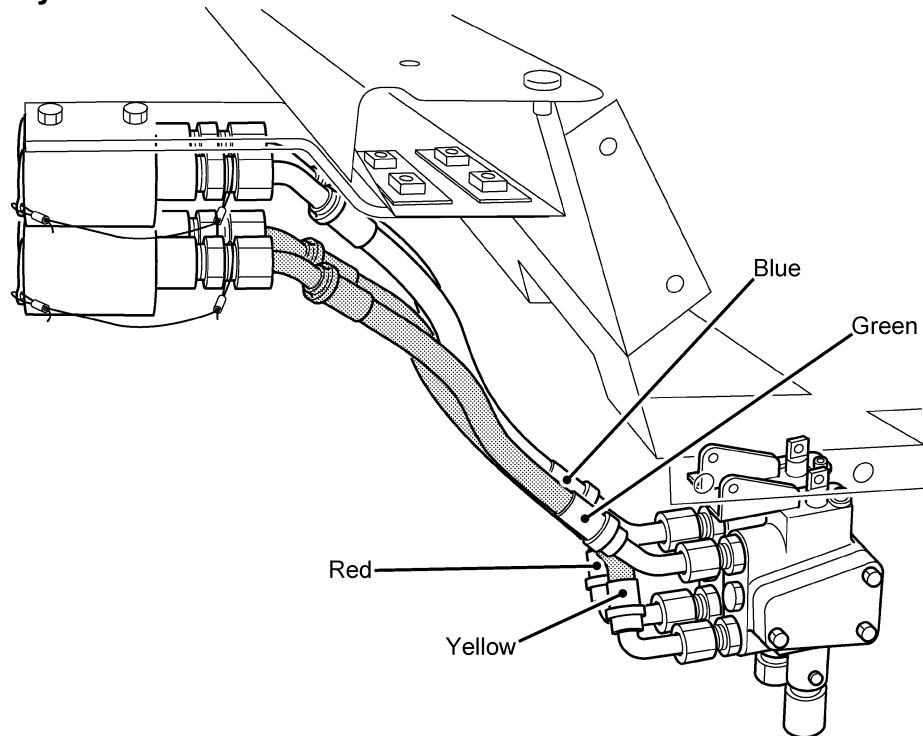
**NOTE :**

- CABTYPE: Cut the mark of the boot.

**■ 1st. Remote Hydraulic**



## ■ 2nd. Remote Hydraulic



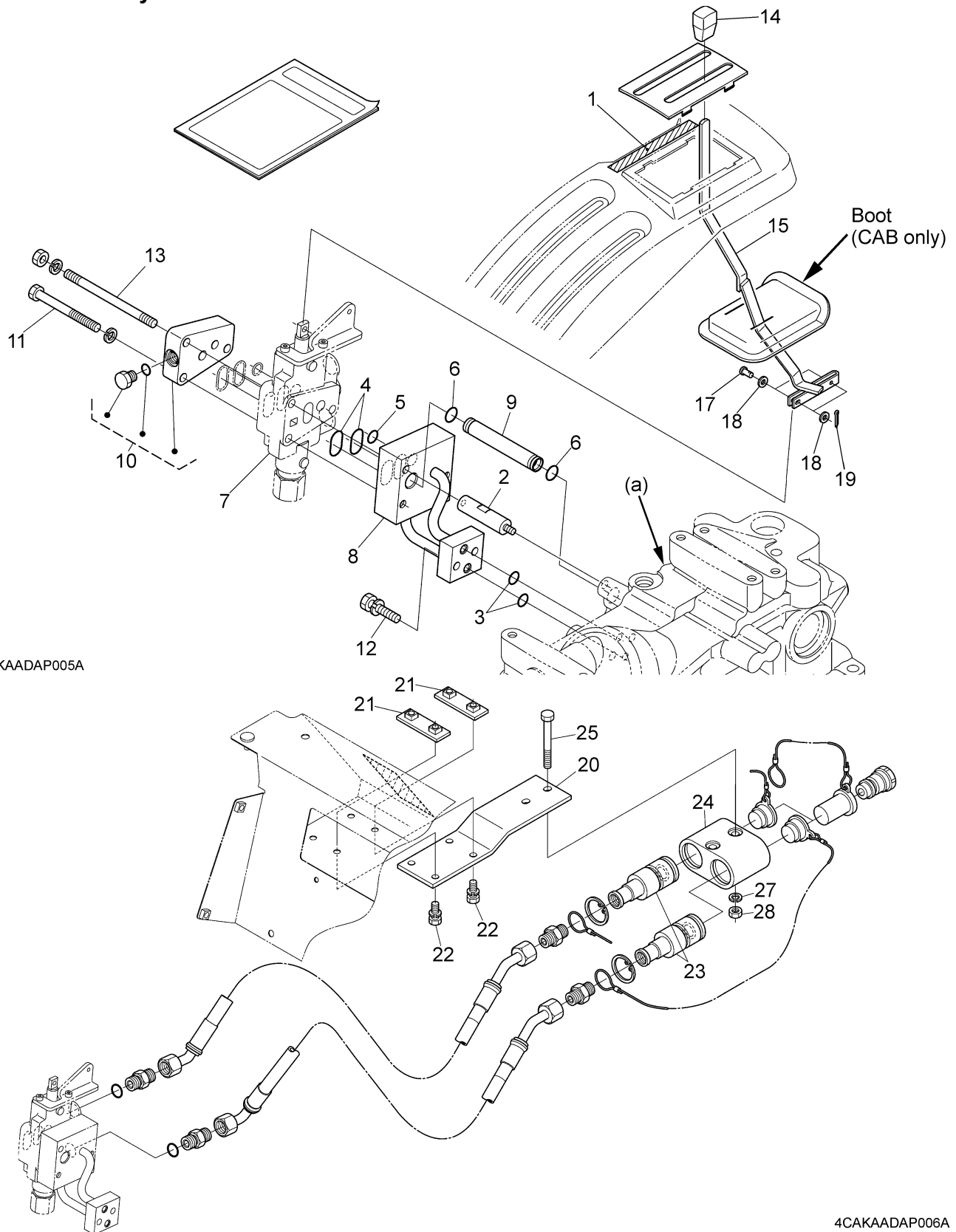
4CAKAADAP002A

## 4. INSPECTION

Check the piping and valves for oil leakage before operating the tractor. If any leakage is found, retighten the screw. If this is difficult to do, consult the dealer.

## 5. PARTS LIST

### ■ 1st. Remote Hydraulic



4CAKAADAP005A

4CAKAADAP006A

## ■ 2nd. Remote Hydraulic

