

OPERATOR'S AND PARTS MANUAL

***B2781B - 51" SNOWBLOWER
B2782B - 63" SNOWBLOWER***

SERIAL NO. 21503940 AND UP

DISCLAIMER

LEGAL DISCLAIMER

Kubota Corporation notes that specifications and technical information are subject to change without notice and Kubota does not represent or warrant that the information in this publication is completely accurate or current; however, Kubota used reasonable efforts to set forth and include accurate and up to date information in this publication. Kubota disclaims all representations and warranties, whether express or implied, including, but not limited to, warranties of merchantability and fitness for a particular purpose and Kubota shall not be liable for any damages, whether compensatory, direct, indirect, incidental, special, or consequential, arising out of or in connection with the use of this publication, or the information therein.

The Product(s) described in this Publication are designed and manufactured only for the country in which they are initially wholesaled by Kubota. Kubota does not provide parts, warranty or service for any Product which is re-sold or retailed in any country other than the country for which the Product(s) were designed or manufactured.

SPECIFICATION

<i>Specification</i>	<i>Detail</i>	
SNOWBLOWER	B2781B	B2782B
Shipping weight	455 lbs. (206 kg)	480 lbs. (218 kg)
Operating weight	355 lbs. (161 kg)	380 lbs. (172 kg)
DIMENSIONS		
Overall length	30.75 in (781 mm) with and without female hitch	30.75 in (781 mm) with and without female hitch
Overall width	51 in (1295 mm)	63 in (1600 mm)
Overall height	54.5 in (1384 mm) with chute; 24.5 in. (645 mm) without chute	54.5 in (1384 mm) with chute; 24.5 in. (645 mm) without chute
Cutting width	51 in (1295 mm)	63 in (1600 mm)
Cutting height	22.63 in (575 mm)	22.63 in (575 mm)
Reach from centreline of front axle to scraper blade	54.9 in (1394 mm)	54.9 in (1394 mm)
Reach from centreline of front axle to auger shaft	47.6 in (1209 mm)	47.6 in (1209 mm)
Impeller diameter	18 in (457 mm)	18 in (457 mm)
Impeller housing depth	7.0 in (178 mm)	7.0 in (178 mm)
Auger diameter	13.75 in (349 mm)	13.75 in (349 mm)
Auger height	16.0 in (406 mm)	16.0 in (406 mm)
Auger clearance from ground	2.25 in (57 mm)	2.25 in (57 mm)
Lift height above ground level	Operating position: 7.25 in (184 mm); Transport position: 10.5 in (267 mm)	Operating position: 7.25 in (184 mm); Transport position: 10.5 in (267 mm)
DRIVE SYSTEM		
Number of phases	2	2
Primary Drive	PTO	PTO
Auger diameter	13.75 in (349 mm)	13.75 in (349 mm)
Auger pitch	16 in (406 mm)	16 in (406 mm)
Impeller diameter	18 in (457 mm)	18 in (457 mm)
Number of blades on impeller	4	4
Chute position	Right	Right
Chute rotation	Manual or hydraulic	Manual or hydraulic
Chute rotation degrees	255 degrees	255 degrees
Discharge chute diameter	7.75 in (197 mm)	7.75 in (197 mm)
Adjustable chute deflector	Yes	Yes
Adjustable skid shoes	Yes	Yes
Replaceable cutting edge	Yes	Yes
Hitch system	Quick hitch system	Quick hitch system
WARRANTY		
Basic	12 Months, no hour limit	12 Months, no hour limit

TABLE OF CONTENT

SPECIFICATION	1
INTRODUCTION – TO THE PURCHASER	4
SAFETY PRECAUTIONS	5
Before Operation.....	5
Notice	6
Subframe & Snowblower.....	6
Before Operation	6
Subframe & Snowblower Operation	7
Transportation	8
Storage	7
Maintenance	9
DECALS.....	10
ASSEMBLY	11
Snowblower Assembly	11
Chute Installation	11
Rotation worm support Installation	11
Manual Rotation Installation	12
Manual Rotation Installation - B2320, B2620, B2920, B2301 & B2601 Tractors	13
Attaching Snowblower to Tractor	14
Detaching Snowblower from Tractor	15
OPERATION	16
General Preparation	16
Operating Controls	16
Manual Chute Rotation	16
Electric Deflector	16
P.T.O. Operation	16
Hydraulic Chute Rotation	16
Up & Down Control	16
Increasing Traction and Stability	16
Work and Travel Speed	16

TABLE OF CONTENT

Adjustments	17
Deflector Adjustment	17
Skid Shoe Adjustment	17
Check of the Hub Bolts	17
Reduction Chain Tension Adjustment	18
Snow Removal Methods	19
 MAINTENANCE	 20
Maintenance	20
Shear Bolts	20
Auger Repositioning	20
Gearbox.....	21
Oil Level – Oil Filling.....	21
Oil Change	21
Lubrication & Adjustment	21
 PARTS	 22
Introduction	22
Female Hitch	23
Snowblower Assembly – B2781B	24
Snowblower Assembly – B2782B	26
Chute with Deflector	28
Manual Chute Rotation.....	29
Reduction Box	30
Worm Gearbox	32
Driveline Female Half	33
 AVAILABLE OPTIONS	 34
TORQUE SPECIFICATION TABLE	35

INTRODUCTION

TO THE PURCHASER

All products are designed to give safe, dependable service if they are operated and maintained according to instructions. **Read and understand this manual before operation.**

This manual has been prepared to assist the owner and operators in the safe operation and suitable maintenance of the snowblower. The information is applicable to products at the time of manufacture and does not include modifications made afterwards.

Read and understand this operator's manual before attempting to put snowblower into service. Familiarize yourself with the operating instructions and all the safety recommendations contained in this manual and those labeled on the snowblower and on the tractor. Follow the safety recommendations and make sure that those with whom you work follow them.

Illustrations

The illustrations may not necessarily reproduce the full detail and the exact shape of the parts or depict the actual models, but are intended for reference only.

Direction Reference

All references to right and left are from the operator's seat, looking at the implement operating.

To assist your dealer in handling your needs, please record hereafter the model number and serial number of your snowblower and tractor. It is also advisable to supply them to your insurance company. It will be helpful in the event that snowblower or tractor is lost or stolen.

TRACTOR

SNOWBLOWER

MODEL:

SERIAL NUMBER:

DATE OF PURCHASE:

DEALER NAME:

SAFETY PRECAUTIONS



SAFETY FIRST

This symbol, the industry's "Safety Alert Symbol", is used throughout this manual and on labels on the machine itself to warn of the possibility of personal injury. Read these instructions carefully. It is essential that you read the instructions and safety regulations before you attempt to assemble or use this snowblower.



DANGER : Indicates an immediate hazardous situation which, if not avoided, will result in death or serious injury.



WARNING : Indicates a potentially hazardous situation which, if not avoided, could result in death or serious injury.



CAUTION : Indicates a potentially hazardous situation which, if not avoided, may result in minor or moderate injury.

IMPORTANT : Indicates that snowblower or property damage could result if instructions are not followed.

NOTE : Gives helpful information.

All products are designed to give safe, dependable service if they are operated and maintained according to instructions. **Read and understand this manual before operation.** It is the owner's responsibility to be certain anyone operating this product reads this manual, and all other applicable manuals, to become familiar with this snowblower and all safety precautions. Failure to do so could result in serious personal injury or snowblower damage. If you have any questions, consult your dealer.

BEFORE OPERATION

Children

Tragic accidents can occur if the operator is not alert to the presence of children. Children are generally attracted to machines and the work being done. Never assume children will remain where you last saw them.

1. Keep children out of the operating area and under the watchful eye of another responsible adult.
2. Be alert and turn machine off if children enter the work area.
3. Before and when backing, look behind for small children.
4. Never carry children while operating the machine. They may fall off and be seriously injured or interfere with the safe operation of the machine.
5. Never allow children to play on the machine or snowblower even when they are turned off.
6. Never allow children to operate the machine even under adult supervision.
7. Use extra care when approaching blind corners, shrubs, trees, or other obstructions that might hide children from sight.

SAFETY PRECAUTIONS - continued

NOTICE

A safe operator is the best assurance against accidents. All operators, no matter how experienced they may be, should read this operator's manual and all other related manuals before attempting to operate the snowblower. Please read the following section and pay particular attention to all safety recommendations contained in this manual and those labeled on the snowblower and on the tractor.

SUBFRAME & SNOWBLOWER

Before Operation

1. Read and understand both the tractor and this operator's manual before operating the equipment. Know how to operate all controls and how to stop the unit and disengage the controls quickly. Lack of knowledge could lead to accidents.
2. Never wear loose, torn, or bulky clothing around the tractor, the subframe and the snowblower. It may catch on moving parts or controls, causing injury.
3. Before and during seasons, thoroughly inspect the area where the snowblower is to be used and remove all objects that may be thrown or cause damage to the snowblower.
4. Set transmission to neutral and disengage clutch, if equipped, before starting the engine.
5. Do not operate snowblower in wintertime without wearing adequate winter garments. Always wear protective clothing.
6. Never attempt to make any adjustments while engine is running. Read this manual carefully to acquaint yourself with the snowblower as well as the tractor operator's manual. Working with unfamiliar snowblower can lead to accidents. Be thoroughly familiar with the controls and proper use of the snowblower.
7. Keep all safety guards in place and verify hardware for proper tightening.
8. Check for moving parts excessive wear regularly. Replace worn parts with genuine parts.
9. Replace all missing, illegible, or damaged safety and warning decals. See list of decals in operator's manual.
10. Keep safety decals clean of dirt and grime.
11. Do not modify or alter this snowblower or any of its components, or any snowblower function without first consulting your dealer.
12. Make sure the tractor is counterweighted as recommended by your dealer. Weights provide the necessary balance to improve stability, traction and steering.

SAFETY PRECAUTIONS - continued

Subframe & Snowblower Operation

1. Before leaving the tractor/snowblower unattended, take all possible precautions. Park the tractor/snowblower on level ground, place the transmission in neutral, set the parking brake, disengage the PTO, lower the snowblower to the ground, place all levers including auxiliary control levers in neutral, shut off the engine and remove the ignition key.
2. Before starting the tractor/ snowblower, remove the ice that might have accumulated on the auger/fan, inspect and clean every rotating part.
3. Prior to operation, clear work area of all objects that can be picked up and thrown. Mark all curbs, pipes, etc. that cannot be moved.
4. Be sure the PTO switch/lever is in OFF/disengaged position before starting engine.
5. Exercise extreme caution when operating on or crossing a gravel drive, walks, or roads. Stay alert for hidden hazards or traffic.
6. Do not carry passengers.
7. Keep clear of all rotating parts. Do not put hands or feet under, or into snowblower and subframe with engine running. Be especially observant of the snowblower areas of discharge, intake or all other mechanical motions.
8. For your safety, do not work under any hydraulically supported machine elements that may creep down, suddenly drop or be accidentally lowered.
9. Park the tractor/snowblower on level ground, place the transmission in neutral, set the parking brake, disengage the PTO, lower the snowblower to the ground, place all control levers in neutral, shut off the engine, remove the ignition key and allow the rotating parts to stop BEFORE unclogging the housing or the chute and making any repairs, adjustments or inspections. Use only a 36" long stick of wood to unclog the snowblower.
10. If the snowblower starts to vibrate abnormally, disengage the PTO, stop the engine immediately and check for cause. Excessive vibration is generally a sign of trouble.
11. Do not run the engine indoors except when starting engine and transporting attachment in or out of building. Carbon monoxide gas is colorless, odorless and deadly.
12. Do not attempt to operate on steep slopes. If operating on slopes is necessary, exercise extreme caution when changing direction.
13. Never operate snowblower without guards, and other safety protective devices in place. All tractor and snowblower shields and covers must be correctly installed at all times. When necessary to remove these, they must be reinstalled immediately.
14. Never operate snowblower near glass enclosures, automobiles, window wells, embankments, etc., without proper adjustment of snow discharge angle.
15. Never operate machine at high transport speeds on a slippery surface.
16. Use extra caution when backing up.
17. Disengage power to auger/fan when transporting or when not in use.
18. Never operate the snowblower without good visibility and lighting.
19. Prolonged exposure to loud noise can cause impairment or loss of hearing. Wear a suitable hearing protective device such as earmuffs or earplugs to protect against objectionable or uncomfortable noises.

SAFETY PRECAUTIONS - continued

20. Never allow anyone near the work area.
21. Never allow anyone to operate the snowblower until they have read the manual completely and are thoroughly familiar with basic tractor and snowblower operation.
22. Make sure the tractor is counterweighted as recommended by your dealer. Weights provide the necessary balance to improve stability, traction and steering.
23. Always make sure all snowblower components are properly installed and securely fastened BEFORE operation.
24. Adjust housing height to clear gravel or crushed rocks surface.
25. Keep away from chute discharge. This chute has the capacity to throw debris at far distances.
26. Never direct chute discharge towards people or animals. A thrown debris can cause serious injury.

TRANSPORTATION

1. If the tractor/snowblower is to be driven on public roads, it must be equipped with an SMV (Slow Moving Vehicle) sign. Check local traffic codes that may apply to unit usage on public roads and highways in your area.
2. Be alert for all other traffic when driving the tractor/snowblower on public roads or highways.

STORAGE

Before storing the snowblower, certain precautions should be taken to protect it from deterioration.

1. Clean the snowblower thoroughly.
2. Make all the necessary repairs.
3. Replace all Safety Signs that are damaged, lost, or otherwise become illegible. If a part to be replaced has a sign on it, obtain a new safety sign from your dealer and install it in the same place as on the removed part.
4. Repaint all parts from which paint has worn or peeled.
5. Lubricate the snowblower as instructed under "Lubrication" section.
6. When the snowblower is dry, oil all moving parts. Apply oil liberally to all surfaces to protect against rust.
7. Attach driveline shield safety chain around driveline by passing it over the upper hitch
8. Store in a dry place.

SAFETY PRECAUTIONS - continued

MAINTENANCE

ALWAYS USE GENUINE PARTS WHEN REPLACEMENT PARTS ARE REQUIRED

1. Keep the tractor and snowblower properly maintained.
2. Park the tractor/snowblower on level ground, place the transmission in neutral, set the parking brake, disengage the PTO, lower the snowblower to the ground, place all control levers in neutral, shut off the engine and remove the ignition key and allow the rotating parts to stop BEFORE making any snowblower adjustments.
3. To avoid injury, do not adjust, unblock the driving system, or service the snowblower with the tractor engine running. Make sure rotating components have completely stopped BEFORE leaving the operator's seat.
4. Keep the tractor/snowblower clean. Snow, dirt or ice build-up can lead to malfunction or personal injury from thawing and refreezing in garage.
5. Always wear eye protection when cleaning or servicing the snowblower or subframe.
6. DO NOT service the tractor while the engine is running or hot, or if the unit is in motion. Always lower snowblower to the ground. If necessary to service snowblower in raised position, securely support with stands or suitable blocking before working underneath. Do not rely on hydraulically supported devices for your safety. They can settle suddenly, leak down, or be accidentally lowered.
7. Do not attempt to service machine, clear obstructions or unclog the snowblower with the engine running. Always shut off engine and allow all motion to cease.
8. The manufacturer will not claim responsibility for fitment of unapproved parts and/or accessories and any damages as a result of their use.
9. Make sure all shields and guards are securely in place following all service, cleaning, or repair work.
10. Do not modify or alter this snowblower or any of its components or operating functions. If you have questions concerning modifications, consult with your dealer.
11. Do not operate a snowblower that is defective or has missing parts. Make sure that all recommended maintenance procedures are completed before operating the snowblower.
12. Check all controls regularly and adjust where necessary. Make sure that the brakes are evenly adjusted.
13. Periodically check all nuts and bolts for tightness, especially wheel hub and rim nuts.
14. To avoid serious personal injury: Escaping hydraulic/diesel fluid under pressure can penetrate the skin causing serious injury. Do not use your hands to check for leaks. Use a piece of cardboard or paper to search for leaks. If you are injured by escaping high pressure fluid, see a medical doctor at once.
15. Stop engine and relieve pressure before connecting or disconnecting hydraulic hoses. Tighten all connections before starting engine or pressurizing hoses.

DECALS

Replace Immediately if Damaged



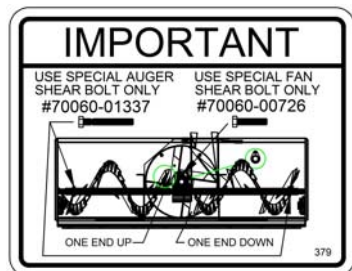
70060-01212
(657762)



70060-01211
(657761)



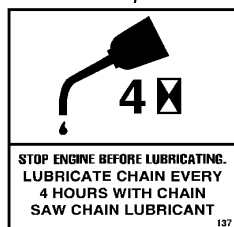
70060-04325
(2500329)



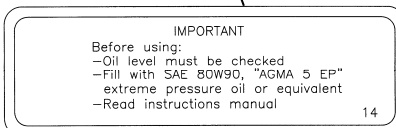
70060-00736
(2500324)



70060-01213
(657763)



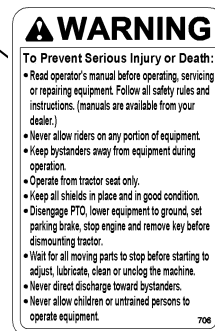
70060-01674
(657804)



70060-01040
(655683)



70060-01212
(657762)



77700-04190
(2500869)

ASSEMBLY

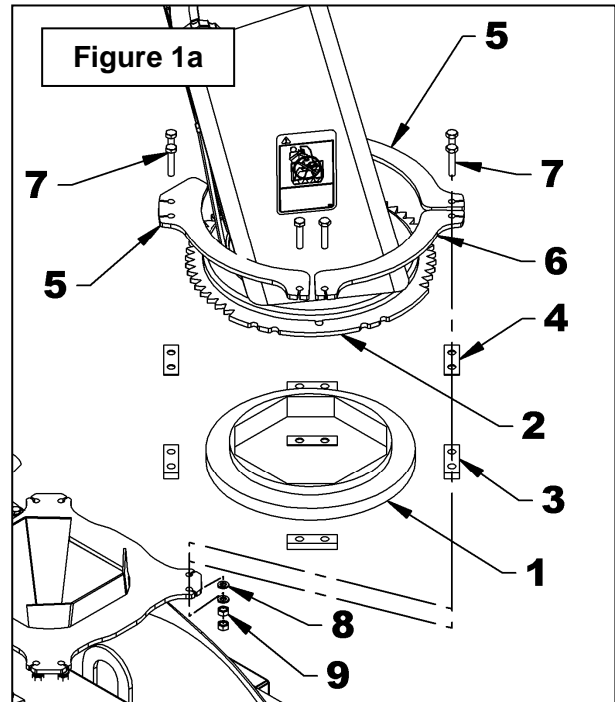
SNOWBLOWER ASSEMBLY

The snowblower is pre-assembled at the factory; however, parts in the bag and box must be assembled. Use the present manual and lay out all parts for assembly. Separate bolts and nuts into various sizes. After assembly, torque all the bolts according to the Torque Specification Table enclosed at the end of the manual.

Chute Installation (Figure 1a)

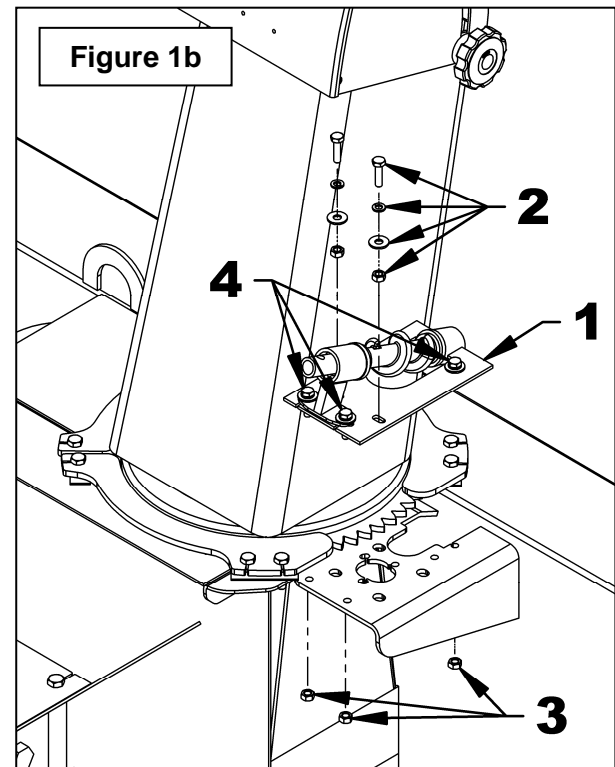
NOTE: For manual rotation only: If it is difficult to turn the chute manually, it might be necessary to use the 1/16" spacers (item 4) to give chute some play.

1. Install the rotation bushing (item 1) over the fan discharge.
2. Loosen the five bolts holding the rotation handle support enough to be able to move it.
3. Apply lubricant on top of the rotation bushing (item 1), and place the chute (item 2) over the bushing, securing the chute with four 3/8" spacers (item 3) and the three retaining plates (items 5-6) as illustrated. Secure using eight 5/16" x 1 1/2" bolts (item 7), 5/16" lockwashers and 5/16"NC hex nuts (items 8-9) in the three retaining plates (items 5-6). Securely tighten all bolts.
4. Push the rotation worm towards the chute leaving sufficient play between the teeth and the worm to prevent the worm from getting jammed. Tighten the five bolts of the rotation handle support.



Rotation worm support Installation (Figure 1b)

1. Remove from the rotation worm support (item 1) the two 1/4"NC x 1" bolts, two 1/4" flat washers, two 1/4" lockwashers and two 1/4" nuts (item 2). This hardware is not required for this assembly.
2. Remove only the three 1/4" nuts (item 3) of the rotation worm support (item 1).
3. Install the rotation worm support preassembled (item 1) on the chute base. Secure with three 1/4" x 1" bolts, 1/4" lockwashers, 1/4" flat washers already installed (item 4) and the 1/4" nuts (item 3) previously removed.



ASSEMBLY

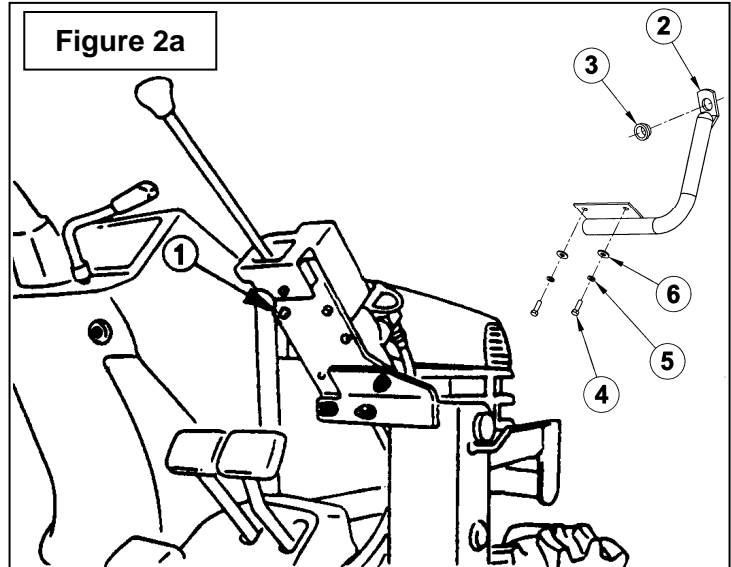
Manual Rotation Installation

(Figures 2a-2b)

(For all tractor models except B2320, B2620, B2920, B2301 & B2601. See page 13 for those models)

1. **Figure 2a:** Attach the handle support (item 2) to the valve stay:

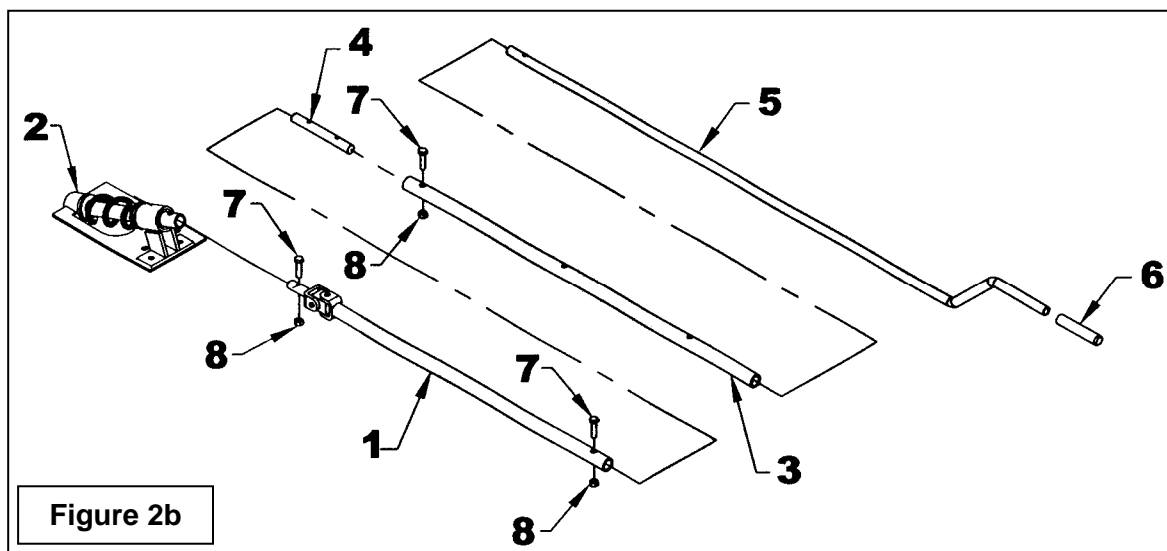
- If the upper part of the valve stay is bolted with M6 x 1.00 x 16mm lg bolts and two 6mm lockwashers (item 1), remove them and attach the handle support (item 2) using the two M6 x 1.00 x 20mm lg hex. bolts, the 6mm lockwashers previously removed and the two 5/16" flat washers (items 4-5-6). The two M6 x 1.00 x 16mm lg hex. bolts will no longer be used.
- In all other cases, attach the handle support with the top 2 existing bolts (item 1).



2. **Figure 2a:** Insert the plastic grommet (item 3) in the hole in the support.

3. **Figure 2b:** Insert the universal joint end of the rotation rod (item 1) in the rotation worm (item 2), and secure with a 10-24 x 1" allen setscrew and 10-24 nylon insert locknut (items 7-8). Attach the rotation tube (item 3) to the coupling rod (item 4) then to the rotation rod (item 1) using two 10-24 x 1" allen setscrews and 10-24 nylon insert locknuts (items 7-8).

4. **Figure 2b:** Install the plastic handle (item 6) on the rotation handle (item 5) and insert handle in the handle support (fig. 2a, item 2), and then in the rotation tube (item 3) and secure in one of the holes with the snap button.



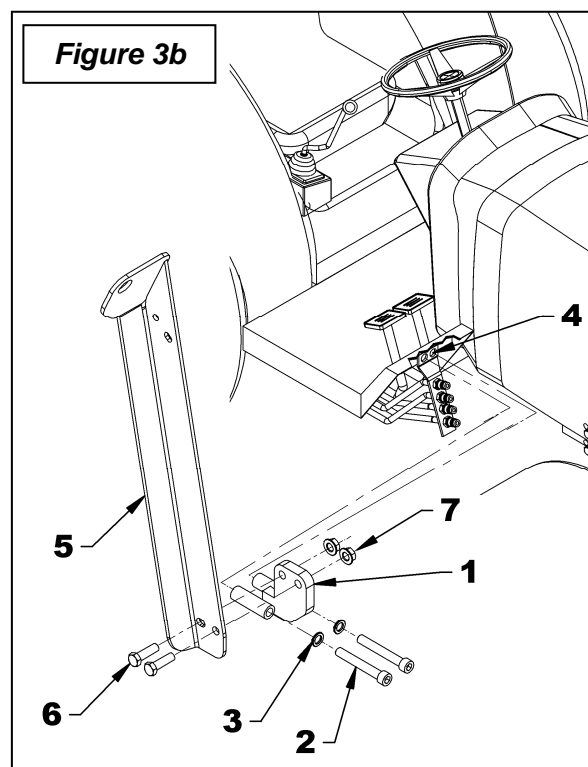
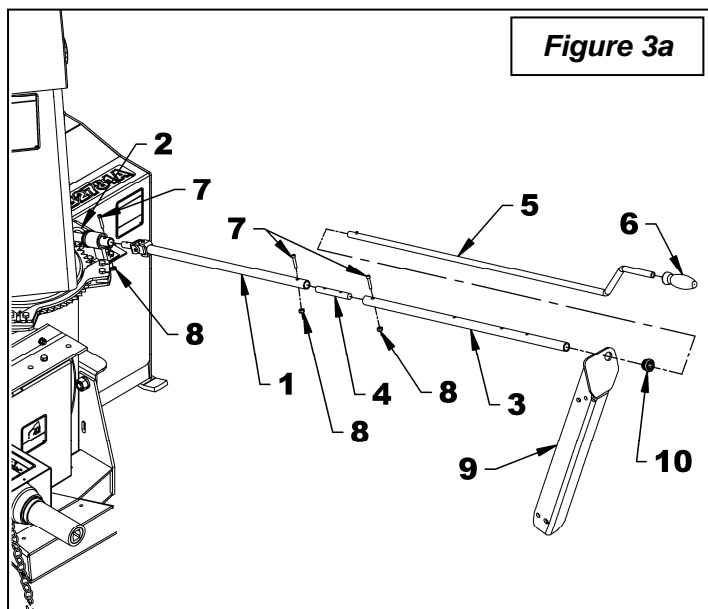
ASSEMBLY

Manual Rotation Installation

(Figure 3a-3b)

(For tractor models B2320, B2620, B2920, B2301 & B2601 only)

1. **Figure 3a:** Insert the plastic grommet (item 10) in the upper hole of the handle support (item 9).
2. **Figure 3b:** Remove the two existing bolts from the hydraulic pipe support (item 4).
3. **Figure 3b:** Install the support bracket with two 10 mm x 1.25 x 80 mm allen socket head cap screw (item 2) and two 10 mm lockwashers (item 3). Do not tighten immediately.
4. **Figure 3b:** Attach the handle support (item 5) with two 3/8" NC x 1 1/4" hex. bolts (item 6) and two 3/8" serrated flange nuts (item 7). Tighten these two bolts according to the "Torque Specification Table" at the end of the
5. **Figure 3b:** Tighten the two 10 mm bolts (item 2) while pulling slightly on the support (item 5) to keep it well distanced from the hood.
6. **Figure 3b:** Insert the universal joint end of the rotation rod (item 1) in the rotation worm (item 2), and secure with a 10-24 x 1" allen setscrew and 10-24 nylon insert locknut (items 7-8). Attach the rotation tube (item 3) to the coupling rod (item 4) then to the rotation rod (item 1) using two 10-24 x 1" allen setscrews and 10-24 nylon insert locknuts (items 7-8).
7. **Figure 3b:** Install the plastic handle (item 6) on the rotation handle (item 5) and insert handle in the handle support (fig. 2a, item 2), and then in the rotation tube (item 3) and secure in one of the holes with the snap button.



ASSEMBLY

Attaching Snowblower to Tractor (Figures 4-5)

1. **Figure 4:** Move the quick hitch lever (item 1) rearward to the unlock position. Position tractor behind snowblower and raise front male quick hitch to approximately 3/4" from the ground.
2. **Figure 4:** Insert male quick hitch (item 2) into the snowblower female quick hitch (item 3). Raise male section so that it is parallel to female section and insert it all the way into female section. Raise snowblower and move the lever forward to lock position. Secure latch with linch pin.
3. Set snowblower in float position, turn engine off, set parking brake and remove ignition key.
4. Connect snowblower driveline to PTO shaft in frame by sliding back locking collar on drive line yoke and pushing yoke over shaft until locking ring snaps back.
5. **Figure 5:** Remove the driveline support chain and hook the "S" hook (item 1) on one of the chain links (not on the other "S" hook).



CAUTION

Make sure that the quick coupler is securely locked in place. A "click" must be heard.

6. Adjust skid shoes according to adjustment instructions in the next **OPERATION** section.



WARNING: This shaft turns at very high RPM. If the collar is not locked to the shaft at tractor end, or if the yoke at the blower end is not secured properly, the driveline can fly loose with great force capable of causing serious injury or death.

If using Hydraulic Chute Rotation:

1. Release hydraulic pressure by moving the control valve lever in all directions.
2. Set snowblower in float position, turn engine off, set parking brake and remove ignition key.
3. Connect chute rotation hoses to female quick coupler on the hydraulic control valve.
4. Verify that pushing the hydraulic control valve lever to the right rotates the chute to the right in a clockwise direction. If not, reverse hoses.
5. Match hydraulic hoses to female couplers using the colored plastic rings.

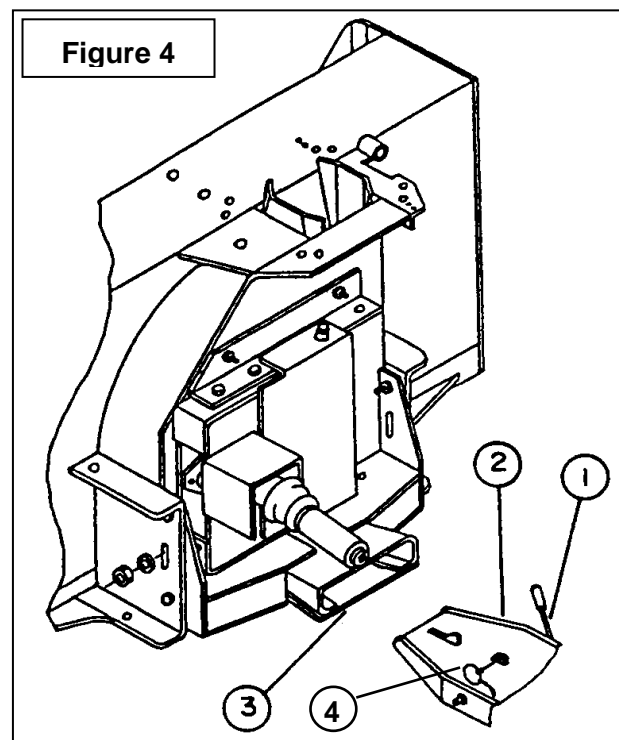


Figure 4

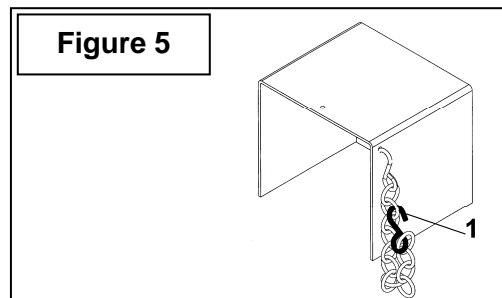


Figure 5

ASSEMBLY

Detaching Snowblower from Tractor **(Figure 4)**

1. Set snowblower in float position, turn engine off, set parking brake and remove ignition key.

If using Manual Chute Rotation:

2. Remove the rotation handle, remove the linchpin (item 4) from male hitch latch and place male hitch lever (item 1) rearward to unlock position.
3. Disconnect driveline from tractor. Set driveline on its support.

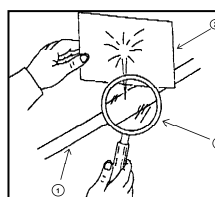
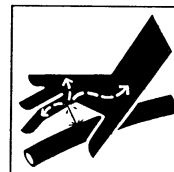
If using Hydraulic Chute Rotation:

4. Release hydraulic pressure by moving control valve lever in all directions.
5. Disconnect hydraulic hoses from tractor female couplers and install dust caps and plugs in couplers.
6. Back tractor away from attachment carefully.



WARNING: To avoid serious personal injury. Escaping hydraulic/diesel fluid under pressure can penetrate the skin causing serious injury.

- Do not use your hands to check for leaks. Use a piece of cardboard or paper to search for leaks.



1. Hydraulic hose
2. Cardboard
3. Magnifying glass

- Stop engine and relieve pressure before connecting or disconnecting lines.
- Tighten all connections before starting engine or pressurizing lines.

If any fluid is injected into the skin, obtain medical attention immediately or gangrene may result.

OPERATION

GENERAL PREPARATION

1. Read the operator's manual carefully before using the tractor and snowblower. Be thoroughly familiar with the controls and proper use of the equipment. Know how to stop the unit and disengage the controls quickly.
2. Wear adequate winter outer garments while operating the equipment.
3. Make sure the snowblower is clear of snow and other material before engaging the snowblower.
4. Make sure the auger and fan is operating freely.
5. Check the oil level in the reduction box and if necessary, add AGMA 5EP extreme pressure oil, SAE 80W90 gear oil or equivalent.
6. Check the three shear bolts, one on each auger section and one between the fan and gearbox for proper tightness.
7. Adjust the skid shoes so the snowblower runs leveled.
8. Before engaging the snowblower drive, always have the engine running at idle.
9. Operate the snowblower at maximum engine RPM.

OPERATING CONTROLS

Manual Chute Rotation

Turning the handle in a clockwise direction turns the chute in the counterclockwise direction.

Electric Deflector

Moving the toggle up or backward raises the deflector. Moving the toggle down or forward lowers the deflector

PTO Operation

The mid PTO is activated by pulling up the PTO lever on left side of seat. Push down to disengage.

Hydraulic Chute Rotation

Pushing the hydraulic lever to the right rotates the chute to the right, in a clockwise direction. Pushing the lever to the left rotates the chute to the left.

Up and Down Control

Pulling the lever backward raises the snowblower, pushing the lever forward lowers the snowblower and pushing the lever fully forward sets the snowblower in float position.



IMPORTANT : Use full RPM power when removing wet, sticky snow. Low RPM power will tend to clog the chute.



CAUTION : Do not use your hands or feet to unclog the chute. Use a 36" (925mm) stick or board. Do not attempt to unclog the chute while engine is running. If the chute is clogged, disengage the drive shaft, place the transmission in neutral, set the parking brake, lower the implement to the ground, shut off the tractor engine, remove the ignition key, wait for all movement to stop and then clear the snow from the chute.

Increasing Traction and Stability

The use of tire chains and wheel weights or rear counterweights is recommended for extra traction and stability, especially when operating in snow and/or slippery surfaces. See your dealer for details.

Work And Travel Speed

Working ground speed will depend on the depth and density of the snow to be cleared. Normally, ground speed will range from 4 to 7 mph for light, dry snowfalls (3-6"), and 1-3 mph for heavy, wet or drifted snow.

OPERATION

ADJUSTMENTS



ATTENTION: To avoid personal injury, be sure the tractor engine is off, the drive shaft disengaged, and all movement has stopped before making any adjustments.

Deflector Adjustment

Set the angle of deflection according to the distance the snow must be thrown. To set the deflector angle, loosen the two deflector knobs, adjust the deflector to the appropriate angle, and retighten the two knobs securely.

Skid Shoe Adjustment (Figure 6)

Adjust the snowblower so that the skid shoes run level and according to the surface conditions so that stones are not thrown with the snow. Adjust both skid shoes to the same height to keep the cutting edge level and adjust upwards for smooth surfaces.

Loosen skid shoe bolts and adjust according to instructions below, and securely tighten bolts:

Clearance between cutting edge and surface:

- **Level paved surface:** Insert bolts in bottom holes
- **Uneven or gravel surface:** Insert bolts to the required distance: 1/2" - center hole
1" - upper hole

Check of the Hub Bolts (Figure 7)

1. Remove the guard (item 1) by unscrewing the two bolts (items 2-3).
2. With 1/4" drive ratchet, check the tightening of the three bolts (item 4) by applying a pressure between 12 and 15 lbs, while alternating from one another. Make sure the three bolts have the same tightness.
3. Reinstall the guard (item 1).

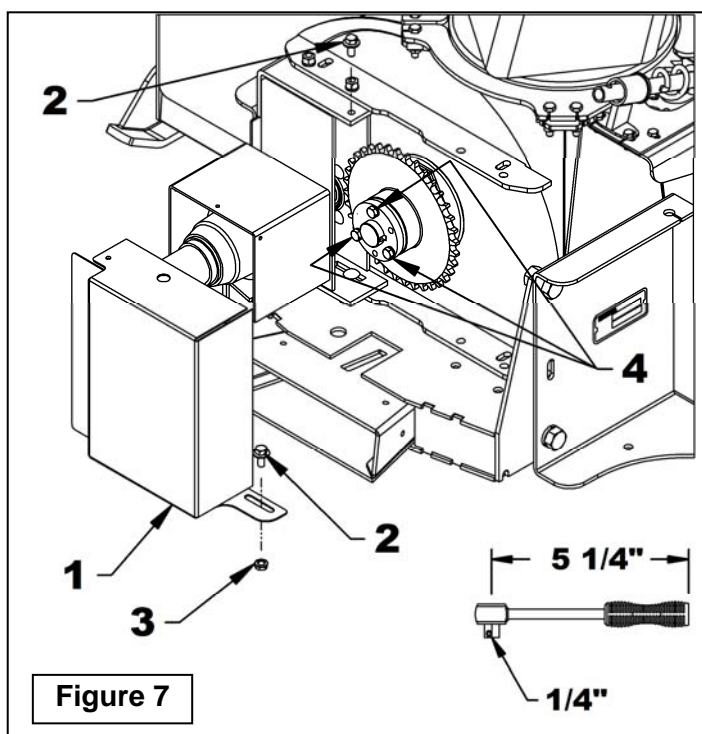


Figure 7

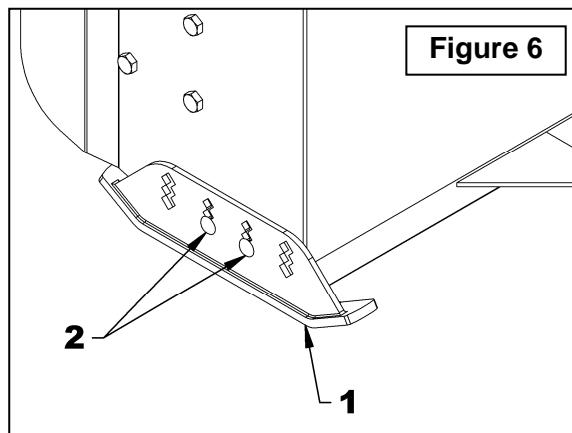


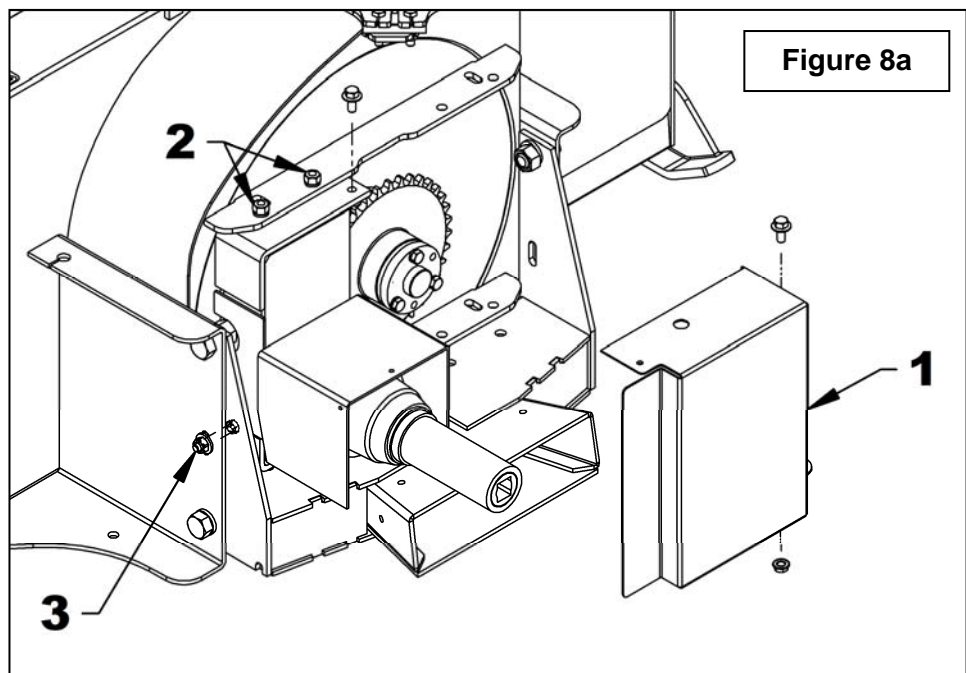
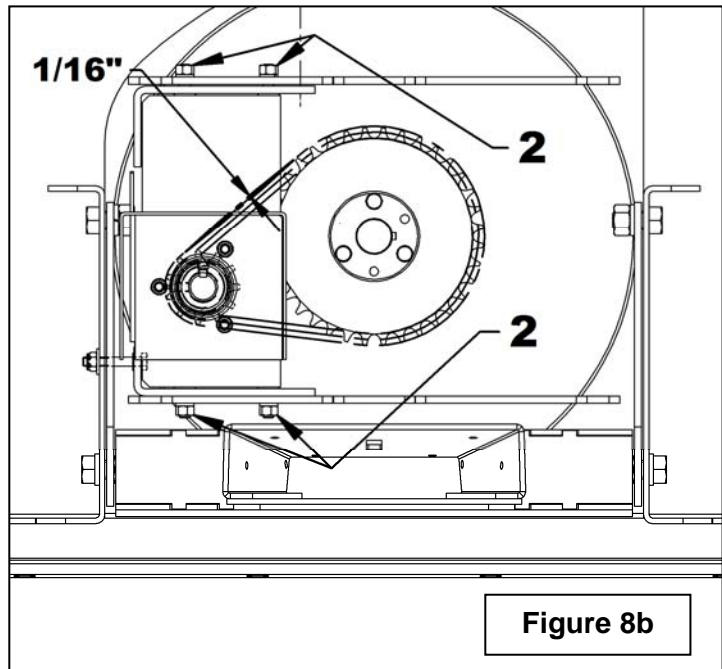
Figure 6

OPERATION

Reduction Chain Tension Adjustment **(Figures 8a-8b)**

1. **Figure 8a:** Remove chain cover (item 1).
2. **Figure 8a-8b:** Loosen the four nuts securing the reduction box (items 2) to the snowblower.
3. **Figure 8a:** Tighten the chain using the tightening bolt (item 3) on left hand side of fan housing.
4. **Figure 8b:** Leave approximately 1/16" deflection in the bottom span of chain.
5. Tighten the four nuts securing reduction box to the snowblower. Install the chain cover.

IMPORTANT: To avoid damage to the snowblower, retorque all bolts after the first 10 hours of operation.



OPERATION

SNOW REMOVAL METHODS

When removing snow, do not use the snowblower as a dozer blade to push snow. Let the snowblower work its way through deep drifts. If the speed of your tractor is too fast, the snowblower may become overloaded and clog. For best results, raise the snowblower and remove a top layer of snow. A second pass with the snowblower will remove the remaining snow.

IMPORTANT: Use full RPM power when removing wet, sticky snow. Low RPM power will tend to clog the chute.

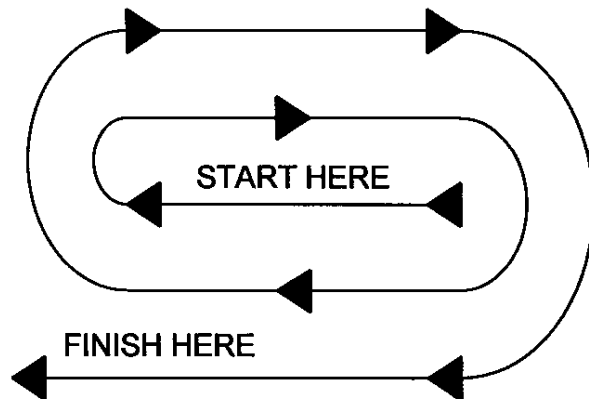


WARNING: Do not use hands or feet to unclog chute. Do not attempt to clear clogged chute of snow while tractor engine is running. If the chute clogs, disengage the drive shaft, place the transmission in neutral, set the parking brake, lower the implement to the ground, shut off the tractor engine, remove the ignition key, wait for all movement to stop, and then clear the snow from the chute.

A definite pattern of operation is required to thoroughly clean the snow area. These patterns will avoid throwing snow in unwanted places as well as eliminating a second removal of snow.

PATTERN 1

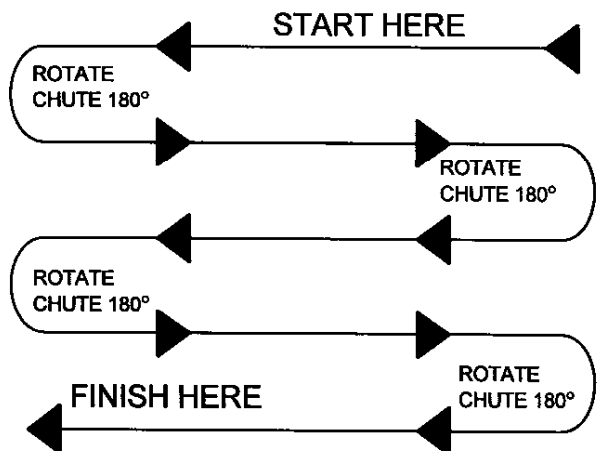
DISCHARGE SNOW BOTH SIDES



DISCHARGE SNOW BOTH SIDES

Where it is possible to throw the snow to the left and right (above), as on a long driveway, it is advantageous to start in the middle. Plow from one end to the other, throwing snow to both sides without changing the direction of the discharge guide

PATTERN 2



DISCHARGE SNOW THIS SIDE ONLY

If the snow can only be thrown to one side of the driveway or sidewalk (above), start on the opposite side. At the end of the first pass, rotate the discharge guide 180 degrees for the return pass. At the end of each succeeding pass, rotate the discharge guide 180 degrees to maintain direction of throw in the same area..

MAINTENANCE

MAINTENANCE

ALWAYS USE GENUINE PARTS WHEN REPLACEMENT PARTS ARE REQUIRED.



WARNING

- Before cleaning, adjusting or repairing the snowblower: bring the tractor to a complete stop, lower the implement shut off the engine and remove the ignition key.
- Never park the tractor inside a building where an open flame or sparks are present. Allow the engine to cool down before storing in any enclosure.
- Run the snowblower a few minutes after blowing snow to prevent freeze up of auger and fan.
- Provide adequate blocking before working under the snowblower when in raised position.

Shear Bolts

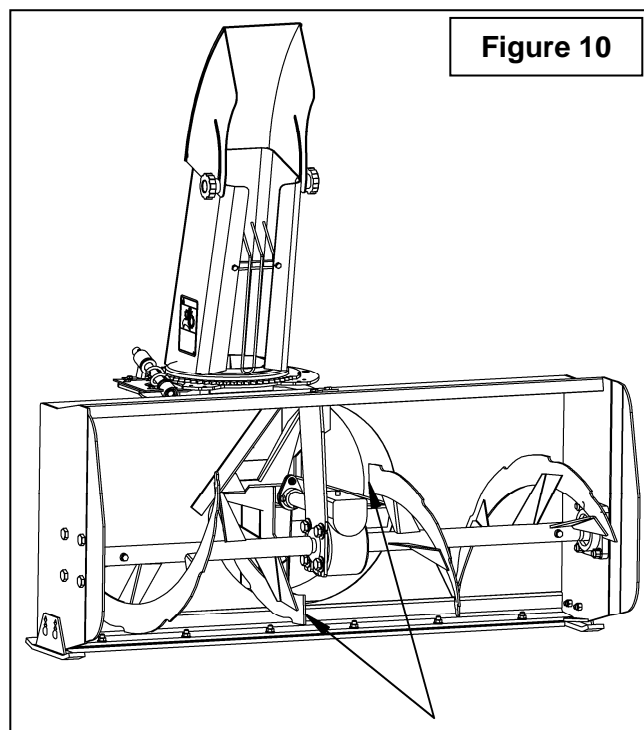
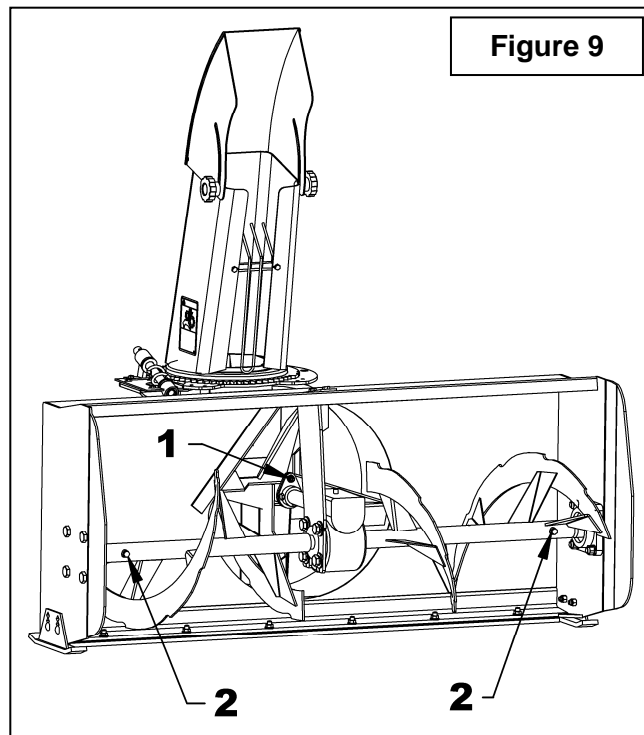
(Figure 9)

- Always use special grade 5 shear bolts on fan shear assembly (item 1), and special grade 5 grooved shear bolts on auger sections (items 2) as shown on decal 70060-00736.
- Check shear bolts at frequent intervals for proper tightness to make sure the snowblower is in safe working condition.

Auger Repositioning

(Figure 10)

After shear bolt breakage on one of the augers, make sure to reposition the augers as shown on the figure below.



MAINTENANCE

Gearbox

When servicing the gearbox, the sealing of the casing must be restored. To do so, apply a layer of silicone to the casing before closing it. Allow the silicone to cure for at least 24 hours before filling it with oil.

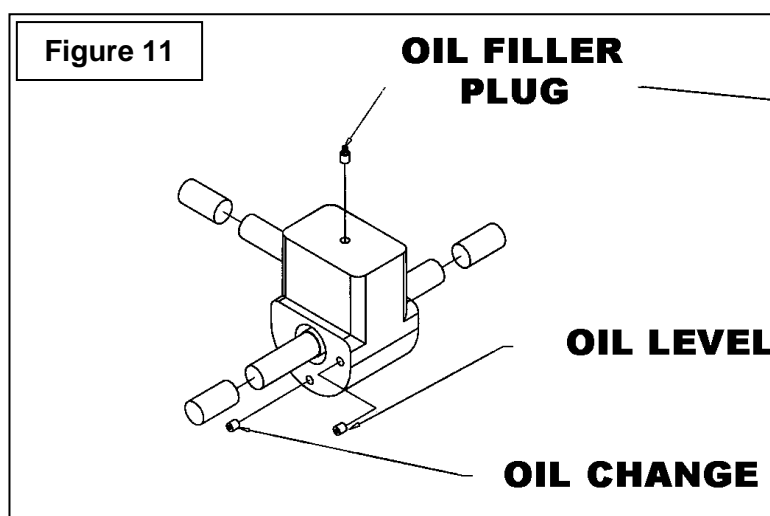
Oil Level – Oil Filling (Figure 11)

To check oil level: Remove oil level plug, check if the oil is flush with the plug. If not, remove the oil filler plug and fill until the oil flows through the oil level plug hole. Reinstall both plugs.

Oil Change (Figure 11)

Change the oil in the gearbox and in the reduction box once a year.

1. Remove oil filler plug.
2. Remove oil change plug and let oil flow through until only small drops are coming out.
3. Reinstall oil change plug and remove oil level plug. Fill gearbox with SAE 80W90 oil, AGMA 5EP extreme pressure oil or equivalent, until oil reaches oil level plug. Reinstall oil level plug, then oil filler plug.



LUBRICATION & ADJUSTMENT

Use a good grease gun, grease and lubricate as follows:

DESCRIPTION	TIME INTERVAL	LUBRICATION REQUIRED
Driveline	8 hours	Grease each universal joint
	24 hours	Slide drive shaft apart and coat sliding surfaces with grease.
Drive Chain	4 hours and after each use	Lubricate with chain saw chain oil Check that the chain deflection is at 1/16" and adjust if needed
Auger	24 hours or Once a year	Grease the fittings on each auger section
Bearing	24 hours of use	Grease bearings on auger.
Gearbox	Every month	Check oil level. If needed, add AGMA 5EP extreme pressure oil, SAE 80W90 gear oil or equivalent.
	Once a year	Replace oil

PARTS

INTRODUCTION

All parts are illustrated in "exploded views" which show the individual parts in their normal relationship to each other. Reference nums are used in the illustrations. These nums correspond to those in the "Reference Num" (REF) column, and are followed by the description and quantity required.

O/L - "Obtain Locally" in the part number column indicates common hardware that is available at your local hardware supply.

All reference to right and left, forward or rearward, is from the operator seat facing the equipment while in operation.

Orders must give the complete description, correct part num, the total amount required, the serial num, the method of shipment and the shipping address.

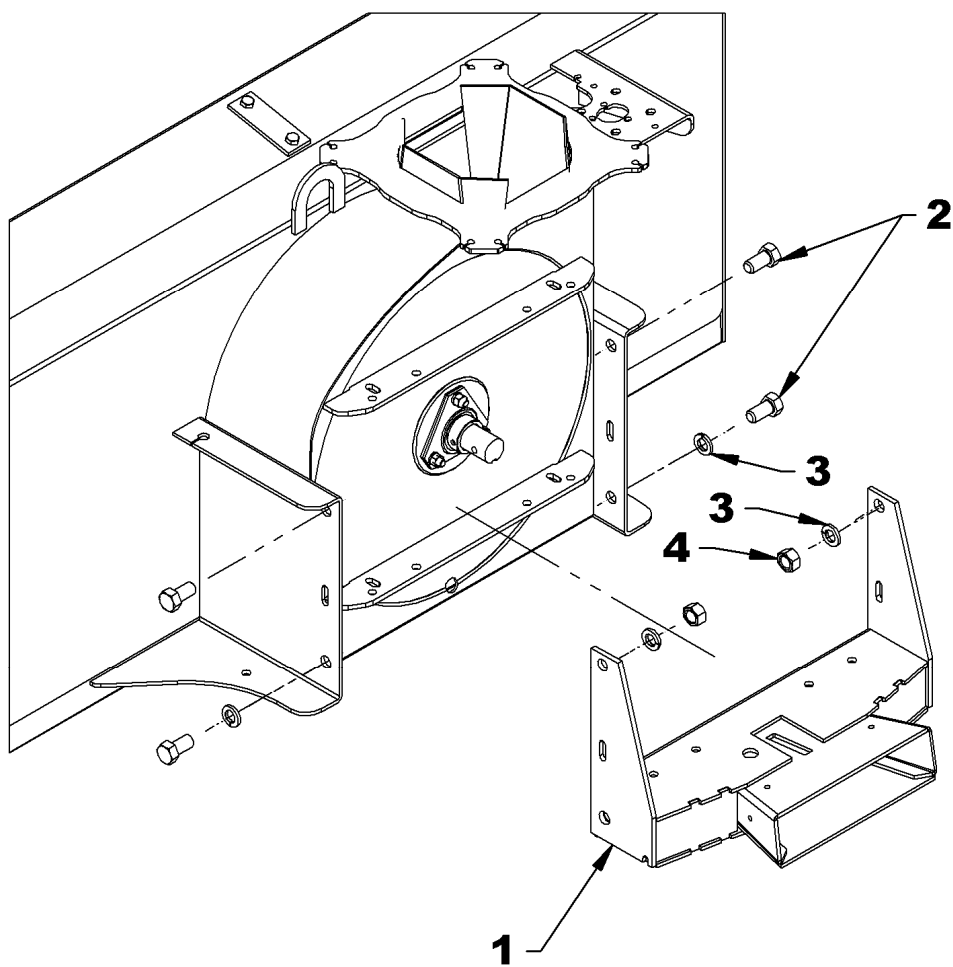
The manufacturer reserves the rights to change, modify, or eliminate from time to time, for technical or other reasons, certain or all data, specifications, or the product or products themselves, without any liability or obligation.

The parts listed here are available through your local dealer.

PARTS

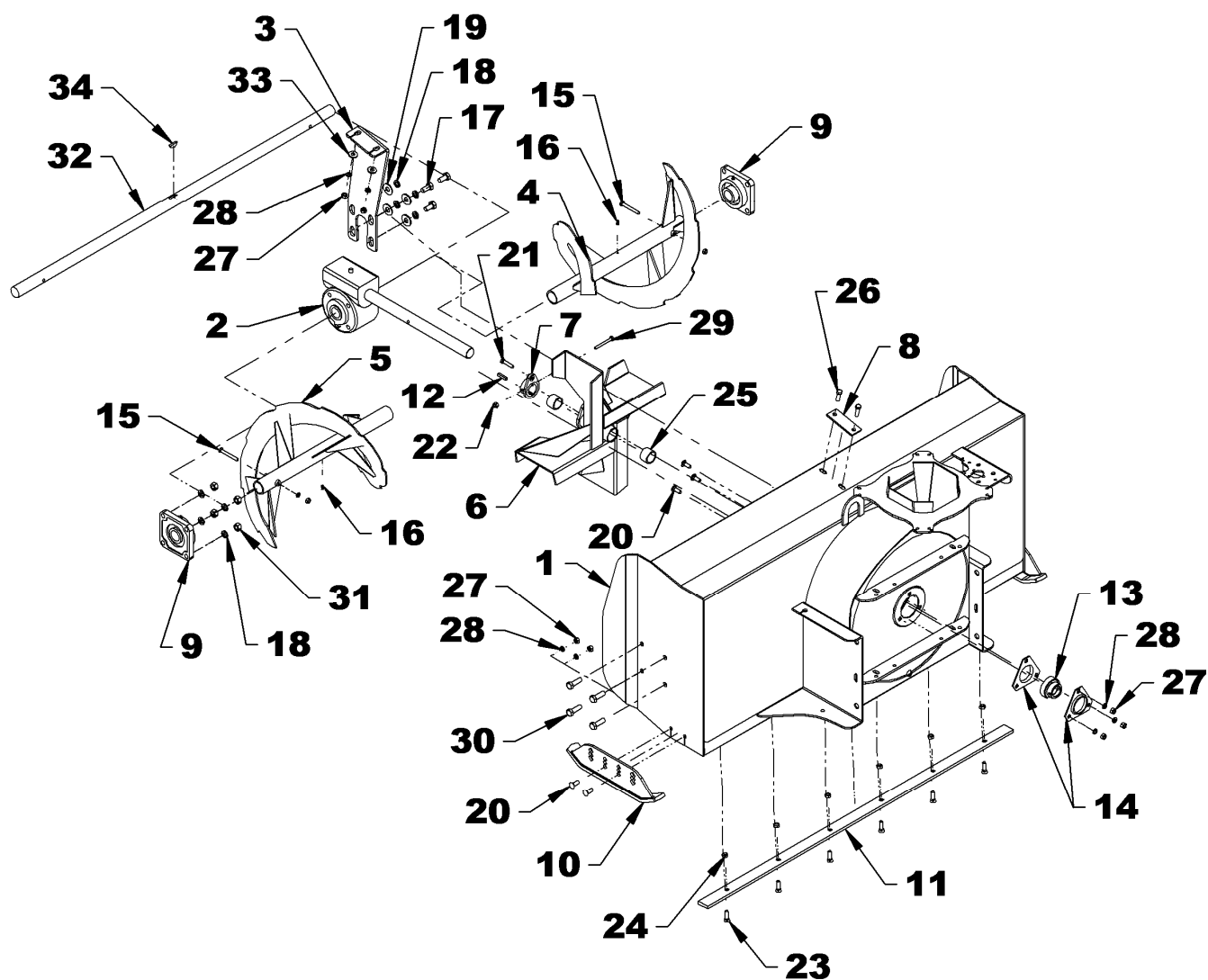
FEMALE HITCH

REF.	DESCRIPTION	QTY	PART #	CODE
1	Female quick hitch	1	70060-03214	660019
2	Hex. bolt 5/8"NC x 1 1/4" PTD	4	75599-01725	0100092
3	Lockwasher 5/8" PTD	4	70001-00804	1200007
4	Hex. nut 5/8"NC PTD	2	70001-00802	0900007



PARTS

SNOWBLOWER ASSEMBLY – B2781B



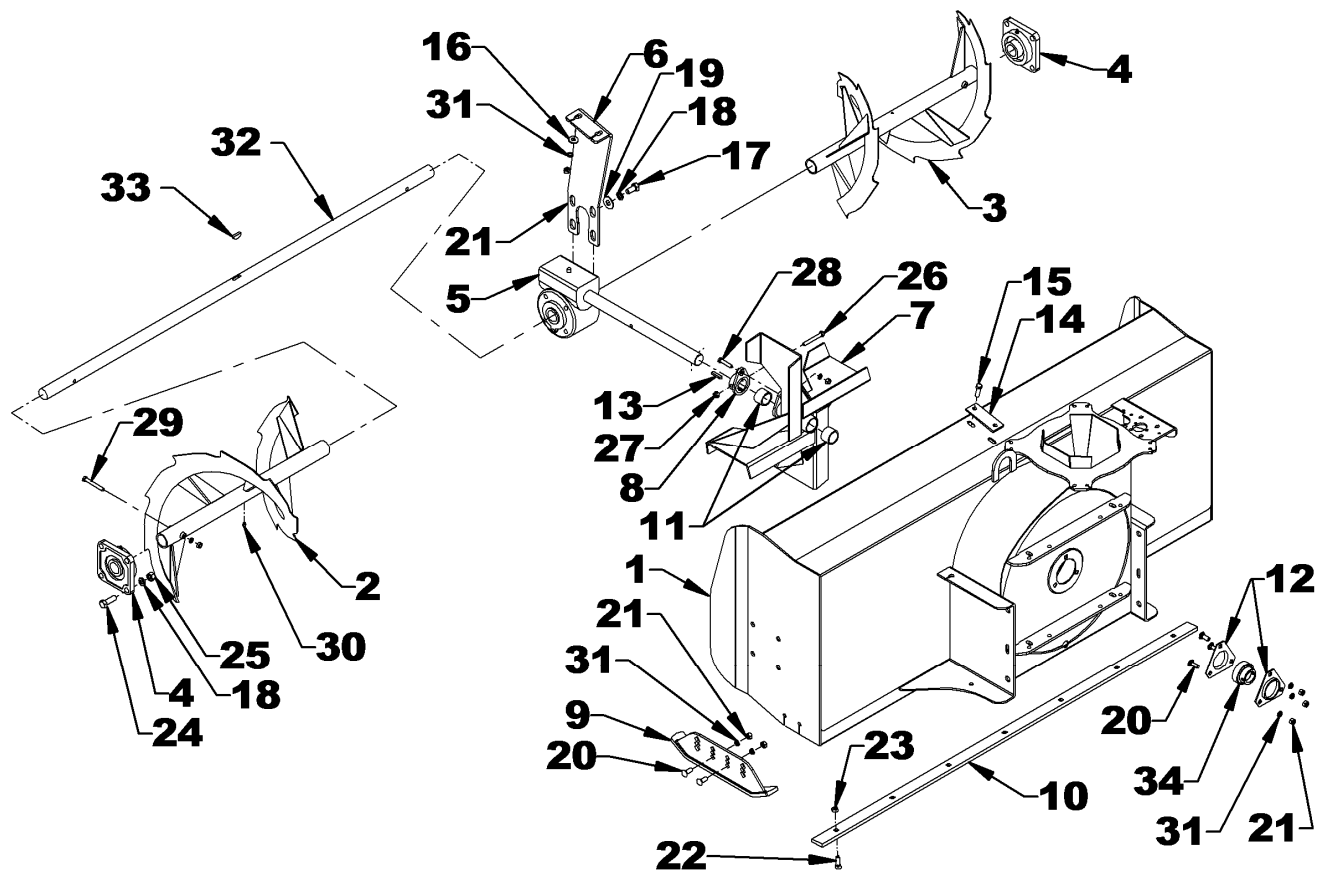
PARTS

SNOWBLOWER ASSEMBLY – B2781B

REF.	DESCRIPTION	QTY	PART #	CODE
1	Housing	1	77700-02716	669771
2	Worm Gear Box	1	77700-04234	4500137
3	Gear Box Support	1	70060-00672	665842
4	Auger Ass'y (RH)	1	70060-04235	660375
5	Auger Ass'y (LH)	1	70060-04234	660374
6	Fan	1	70060-00733	665998
7	Shear plate	1	70060-00734	665999
8	Reinforcement bracket	1	70060-00812	654468
9	Bearing 1 1/4", 4 holes	2	77700-05004	4300118
10	Adjustable Skid Shoe	2	77700-02283	669586
11	Cutting edge	1	70060-03405	659384
12	Key 1/4" x 1/4" x 1 1/4"	1	70060-00814	654643
13	Bearing with locking collar	1	70060-02176	4300009
14	Bearing flange	2	70060-01657	657893
15	Shear bolt 5/16" (SPECIAL), lockwasher & nut	2	70060-01337	657296
16	Grease fitting	2	70060-00940	654106
17	Hex. bolt 1/2" NC x 1" PTD	4	75599-01325	0100068
18	Lockwasher 1/2" PTD	12	75599-33015	1200006
19	Flat washer 1/2" (9/16" hole) PTD	4	75599-32016	1400006
20	Carriage bolt 3/8" NC x 1" PTD	7	70050-94230	0300008
21	Shear bolt 5/16" NC x 1 1/2" gr.5 & lock& nut	1	70060-00726	665748
22	Nylon insert locknut 5/16"NC PTD	1	75599-31912	1000005
23	Plow bolt 3/8" NC x 1 1/4" PTD	6	70001-00789	0400002
24	Stover lock nut 3/8"NC PTD	6	75599-31933	1100003
25	Bushing (oil-lite)	2	70050-02759	4300057
26	Hex. bolt 3/8" NC x 1 1/4" PTD	2	75599-01325	0100039
27	Hex. nut 3/8"NC PTD	9	75599-31013	0900003
28	Lockwasher 3/8" PTD	9	75599-33013	1200004
29	Hex. bolt 5/16"NC x 2 1/2" PTD	1	77700-01718	0100026
30	Hex. bolt 1/2" NC x 1 1/2" PTD	8	75599-01530	0100070
31	Hex. nut 1/2" NC PTD	8	75599-31015	0900006
32	Output shaft	1	70060-00832	654504
33	Flat washer 3/8" (7/16" hole) PTD	2	75599-32014	1400004
34	Woodruff Key 1/4" X 1 1/8lg	1	70060-00834	654506

PARTS

SNOWBLOWER ASSEMBLY – B2782B



PARTS

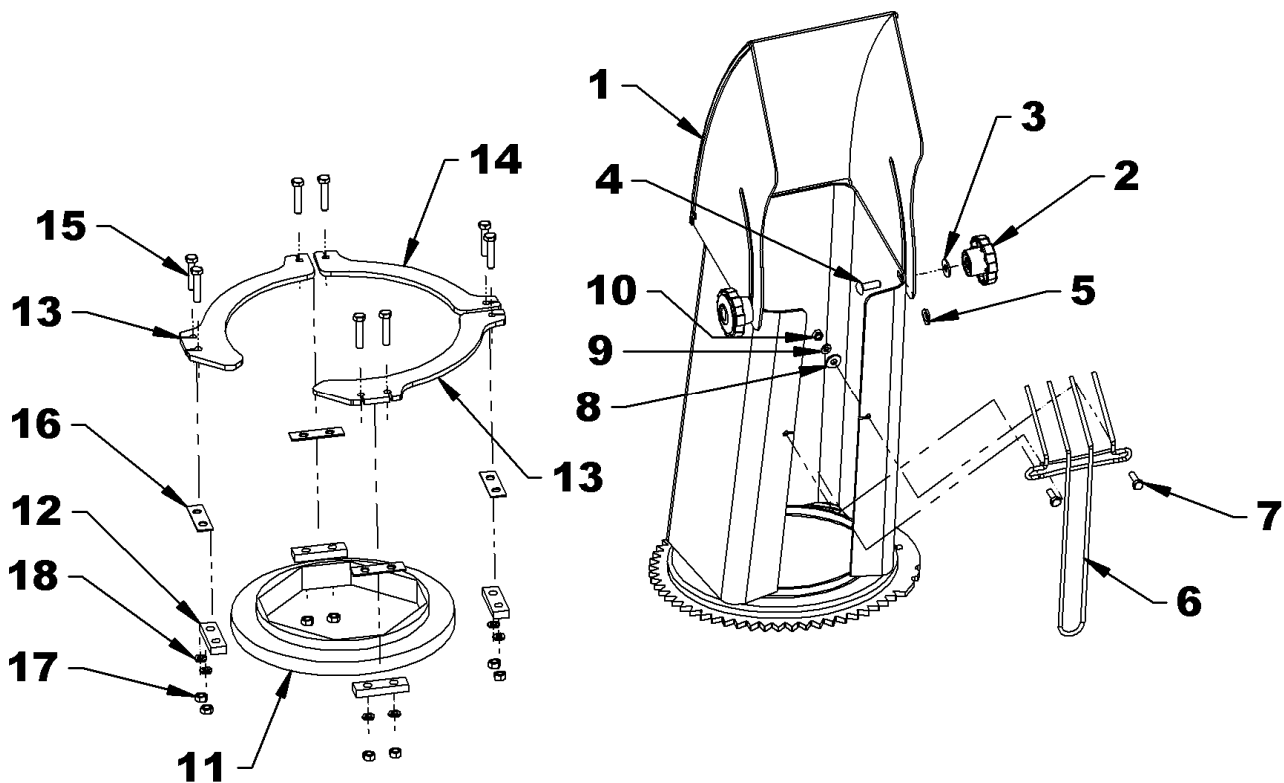
SNOWBLOWER ASSEMBLY – B2782B

REF.	DESCRIPTION	QTY	PART #	CODE
1	Housing	1	77700-02717	669772
2	Left auger	1	70060-04313	660376
3	Right auger	1	70060-04314	660377
4	Bearing	2	77700-05004	4300118
5	Worm Gearbox	1	77700-04234	4500137
6	Gearbox support	1	70060-00672	665842
7	Fan	1	70060-00733	665998
8	Shear plate	1	70060-00734	665999
9	Adjustable Skid Shoe	2	77700-02283	669586
10	Cutting edge	1	70060-03421	659531
11	Bushing (oilite)	2	70060-02759	4300057
12	Bearing flange	2	70060-01657	657893
13	Key 1/4" x 1/4" x 1 1/4"	1	70060-00814	654643
14	Reinforcement plate	1	70060-00812	654468
15	Bolt hex. 3/8" NC x 1 1/4" gr.5 PTD	2	75599-01325	0100039
16	Flat washer 3/8" (7/16" hole) PTD	2	75599-32014	1400004
17	Bolt hex. 1/2" NC x 1" gr.5 PTD	4	75599-01520	0100068
18	Lockwasher 1/2" PTD	12	75599-33015	1200006
19	Flat washer 1/2" (9/16" hole) PTD	4	75599-32016	1400006
20	Carriage bolt 3/8" NC x 1" gr.5 PTD	7	70050-94230	0300008
21	Nut hex. 3/8" NC PTD	9	75599-31013	0900003
22	Plow bolt 3/8" NC x 1 1/4" gr.5 PTD	8	70001-00789	0400002
23	Stover locknut 3/8" NC PTD	8	70060-04442	1100003
24	Bolt hex. 1/2" NC x 1 1/2" gr.5 PTD	8	75599-01530	0100070
25	Nut hex. 1/2" NC PTD	8	75599-31015	0900006
26	Bolt hex. 5/16" NC x 2 1/2" gr.5 PTD	1	77700-01718	0100026
27	Nylon insert locknut 5/16" NC PTD	1	75599-31912	1000005
28	Shear bolt 5/16" NC x 1 1/2" gr.5 & lock& nut	1	70060-00726	665748
29	Shear bolt 5/16" x 2 1/2" incl. nut and washer	2	70060-01337	657296
30	Grease fitting 1/4" NF	2	70060-00940	654106
31	Lockwasher 3/8" PTD	9	75599-33013	1200004
32	Output shaft	1	70060-00833	654505
33	Woodruff Key 1/4" X 1 1/8lg	1	70060-00834	654506
34	Bearing with locking collar	1	70060-02176	4300009

PARTS

CHUTE WITH DEFLECTOR

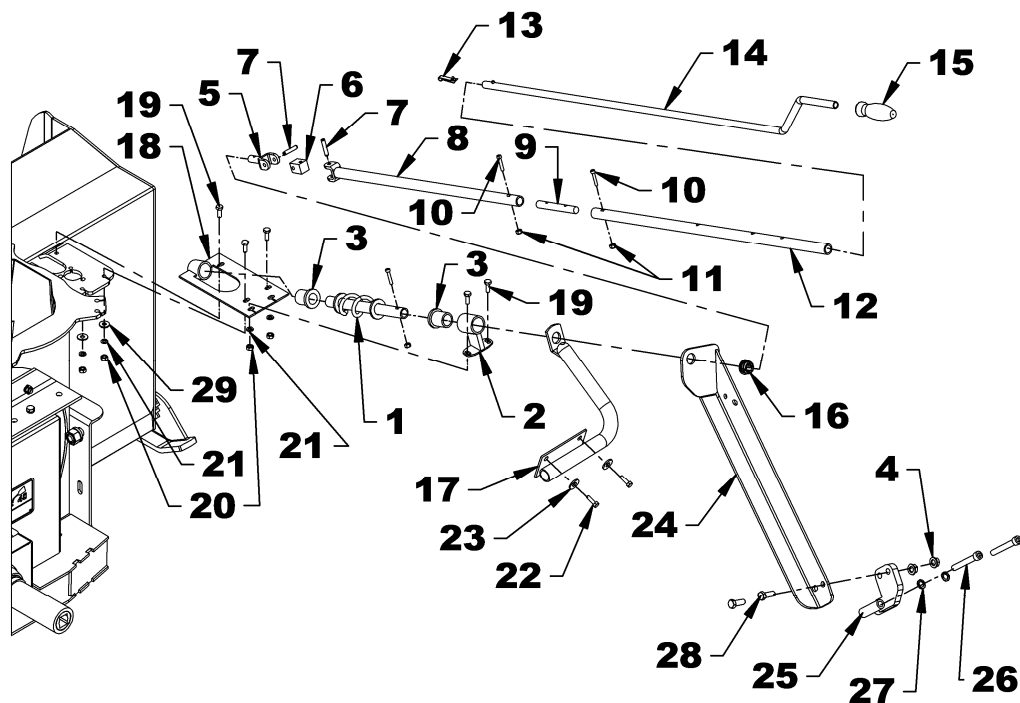
REF.	DESCRIPTION	QTY	PART #	CODE
1	Chute assembly w/ english decals	1	77700-02292	669681
2	Knob 5/16"NC	2	70060-01419	657309
3	Flat washer nylon 11/32" dia. PTD	2	70060-03052	658467
4	Carriage bolt 5/16"NC x 1" GR. 5, PTD	2	70001-00793	0300003
5	Flat washer nylon 7/16" dia.	2	70060-03053	658468
6	Hand guard	1	70060-01358	657308
7	Bolt hex. 1/4"NC x 3/4" GR. 5, PTD	2	75599-01115	0100003
8	Flat washer 1/4" (5/16"hole) PTD	2	75599-32011	1400002
9	Lockwasher 1/4" PTD	2	75599-33011	1200002
10	Nut hex. 1/4"NC PTD	2	75599-31011	0900001
11	Rotation bushing	1	70060-03226	659151
12	Spacer	4	70060-00697	665957
13	Retaining plate – 3 holes	2	77700-03043	669496
14	Retaining plate – 2 holes	1	77700-03044	669497
15	Bolt hex. 5/16" NC x 1 1/2", PTD	8	75599-01230	0100021
16	Spacer PTD	4	70060-00600	666191
17	Hex nut 5/16" NC, PTD	8	75599-31012	0900002
18	Lockwasher 5/16" PTD	8	75599-33012	1200003



PARTS

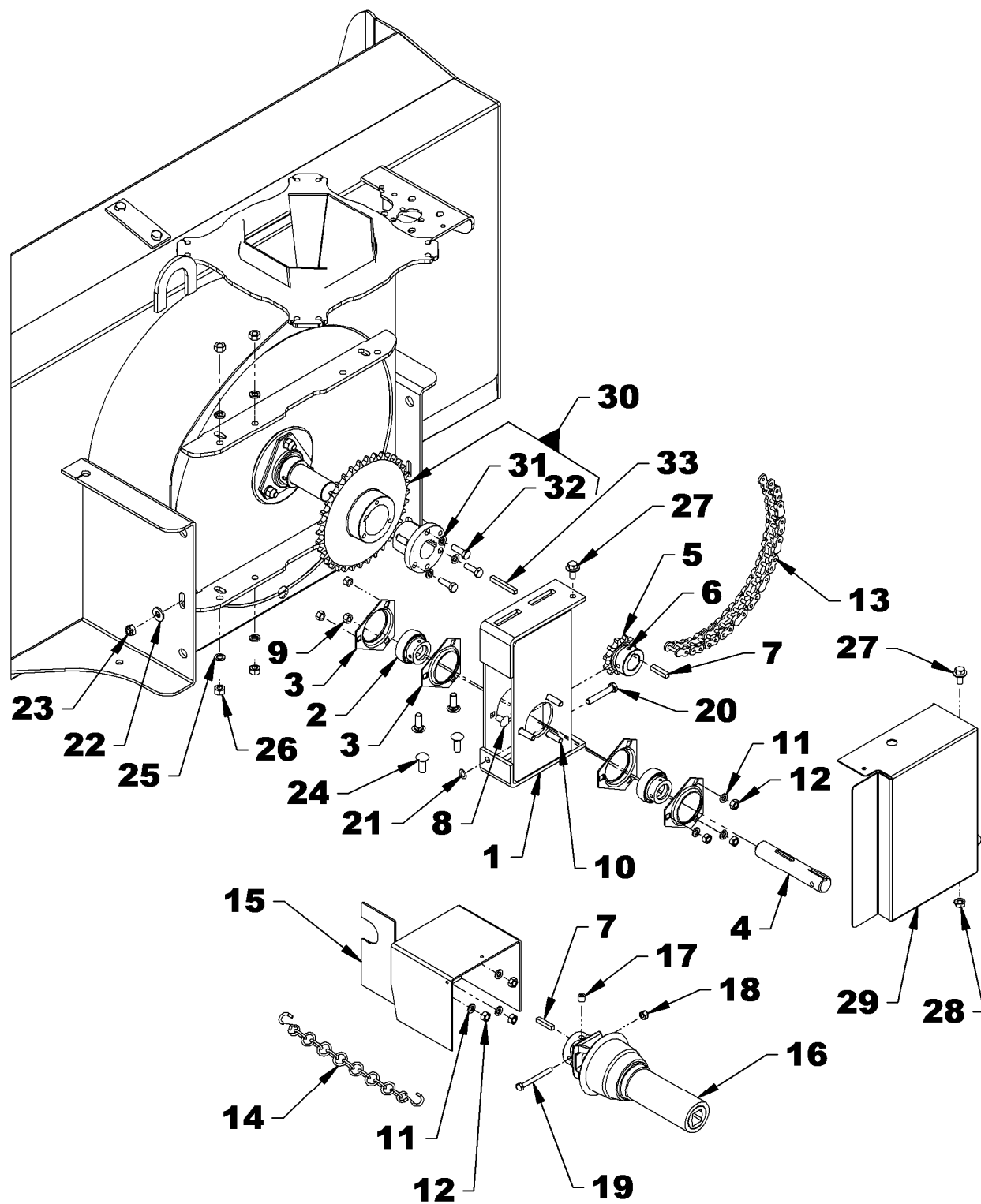
MANUAL CHUTE ROTATION

REF.	DESCRIPTION	QTY	PART #	CODE
1	Rotation worm	1	70060-00694	665953
2	Rotation bracket	1	70060-00693	665952
3	Plastic bushing short 1 5/16"	2	70060-01350	657335
4	Serrated flange nut 3/8" NC, PTD	2	70060-00791	0900035
5	Rotation yoke	1	70060-03416	659595
6	Universal block	1	70060-03417	658193
7	Spring pin 1/4" x 1 1/4"	2	77700-02237	1600015
8	Rotation tube	1	70060-03498	659594
9	Coupling rod	1	70060-03228	659597
10	Allen socket head cap screw 10-24 x 1"	3	70060-02583	0800009
11	Nylon insert locknut 10-24	3	77700-00991	1000002
12	Rotation tube	1	70060-02297	667227
13	Snap button	1	70001-00568	663600
14	Rotation handle including item 13	1	70060-02292	664007
15	Plastic handle	1	70060-01318	656797
16	Grommet	1	70060-01352	657390
17	Handle support- All Tractors - except B2320, B2620 & B2920	1	70060-02280	667223
18	Rotation handle support	1	70060-00692	665951
19	Bolt hex. 1/4"NC x 1" gr.5 PTD	5	75599-01120	0100004
20	Nut hex. 1/4" NC PTD	5	75599-31011	0900001
21	Lockwasher 1/4" PTD	5	75599-33011	1200002
22	Bolt hex. 6mm x 1.00 x 20mm lg PTD	2	70060-02110	0200090
23	Flat washer 1/4" (5/16" hole) PTD	4	75599-32011	1400002
24	Handle support – B2320, B2620 & B2920 Tractors	1	77700-00618	668385
25	Handle support bracket	1	77700-00619	668386
26	Allen socket head cap screw 10mm x 1.25 x 80mm lg Gr. 8.8 PTD	2	77700-07144	0800058
27	Lockwasher Ø10 mm, PTD	2	70060-00792	1200019
28	Bolt hex. 3/8" NC x 1 1/4" lg, PTD	2	75599-01325	0100039
29	Flat washer 1/4" PTD	5	75599-32011	1400002



PARTS

REDUCTION BOX



PARTS

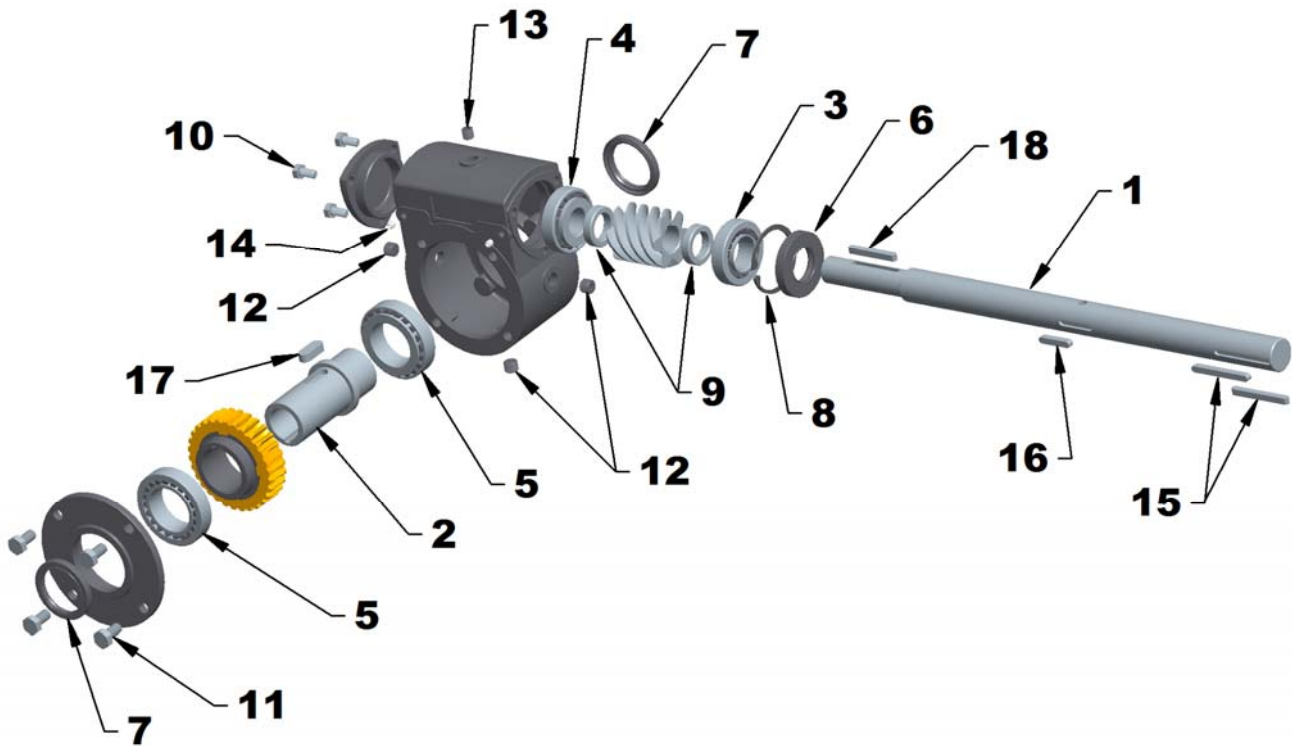
REDUCTION BOX

REF.	DESCRIPTION	QTY	PART #	CODE
1	Reduction box	1	77700-03078	669971
2	Bearing with locking collar	2	70060-70339	665495
3	Bearing flange	4	70060-01426	656589
4	Shaft	1	70060-01618	658223
5	Sprocket (50C11)	1	70060-03497	660017
6	Allen socket setscrew 5/16"NC x 5/16"	2	77700-00701	0500009
7	Key 1/4" x 1/4" x 1 1/4"	2	70060-00814	654643
8	Carriage bolt 5/16" NC x 5/8"	3	70060-00787	0300001
9	Nut (5/16" NC, uni-torque)	3	70001-00794	1100002
10	Bolt (5/16" NC x 1 1/4", carriage)	3	77700-01728	0300004
11	Lockwasher 5/16"	6	75599-33012	1200003
12	Hex. nut 5/16" NC	6	75599-31012	0900002
13	Chain (#50L.L. x 44 links)	1	77700-00705	658237
	- Connecting link	1	70060-01097	656128
14	Support chain (with "S" hooks)	1	70060-00695	665954
15	Driveline guard	1	77700-00707	658564
16	Driveline female half	1	70060-03224	658505
17	Allen socket setscrew (3/8"NC x 3/8")	1	77700-00593	0500017
18	Nylon insert locknut 1/4"NC	1	75599-31911	1000003
19	Hex. bolt 1/4"NC x 2 1/2"	1	75599-01150	0100012
20	Hex. bolt 5/16"NC x 2 1/2" gr. 5 full thread, PTD	1	70060-02866	0100237
21	Springrip washer	1	77700-00708	1300009
22	Flat washer 5/16" (3/8" hole) PTD	1	75599-32012	1400003
23	Nylon insert locknut 5/16"NC	1	75599-31912	1000005
24	Carriage bolt 3/8"NC x 1" PQE	4	70060-97230	0300008
25	Lockwasher 3/8"	4	75599-33013	1200004
26	Hex. nut 3/8" NC PQE	4	75599-31013	0900003
27	Serrated flange bolt 5/16"NC x 3/4" PQE	2	70060-02415	0200083
28	Serrated flange nut 5/16"NC PQE	2	70060-02135	0900036
29	Reduction box cover	1	77700-03079	669970
30	Hub 1 1/4" & Sprocket H50B36 (incl.bolts & locks)	1	77700-06683	670932
31	- Lockwasher 5/16" PTD	3	75599-33012	1200003
32	- Bolt 5/16"NC x 1" gr.5 PTD	3	75599-01220	0100019
33	Key 1/4" x 1/4" x 2"	1	70060-03253	658188

PARTS

WORM GEARBOX - 77700-04234 - B2781B & B2782B

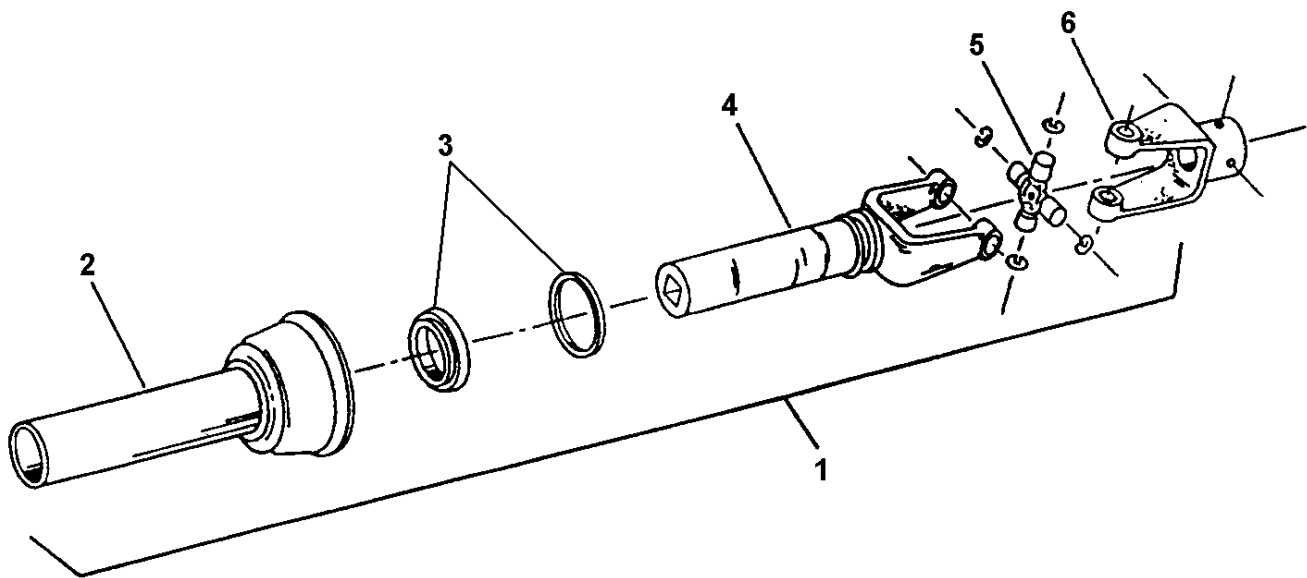
REF.	DESCRIPTION	QTY	PART #	CODE
	Gearbox assembly	1	77700-04234	4500137
1	Input shaft	1	77700-04235	4500147
2	Output hollow shaft	1	77700-04236	4500149
3	Bearing 1" int	1	77700-04237	4500150
4	Bearing 1 1/4" int	1	77700-04238	4500151
5	Bearing 45mm int	1	77700-04239	4500152
6	Oil seal	1	70060-00836	654508
7	Oil seal 45 x 60 x 7	2	77700-04240	4500153
8	Snap ring R062	1	77700-04242	4500155
9	Spacer 25.4 x 38 x 9.6	2	77700-04241	4500154
10	Bolt hex 8mm x 1.25 x 16	3	77700-04057	0200005
11	Bolt hex 10mm x 1.5 x 20	4	70060-04370	0200012
12	Plug 1/4NPT	3	70060-70419	663570
13	Pressure plug 1/8"-27 NPT, vent	1	70060-00840	654927
14	Allen set screw 1/4" NF x 1/4" lg	2	70060-02707	0500003
15	Key 1/4" x 1/4" x 2" lg	2	70060-03253	658188
16	Key 1/4" x 1/4" x 1 1/4" lg	1	70060-00814	654643
17	Key 12mm x 8mm x 30mm lg	1	77700-04245	4500156
18	Key 1/4" x 1/4" x 54.5mm lg	1	77700-04254	4500157
-	Shim kit - for input and output shafts (not shown)	1	77700-04255	4500158



PARTS

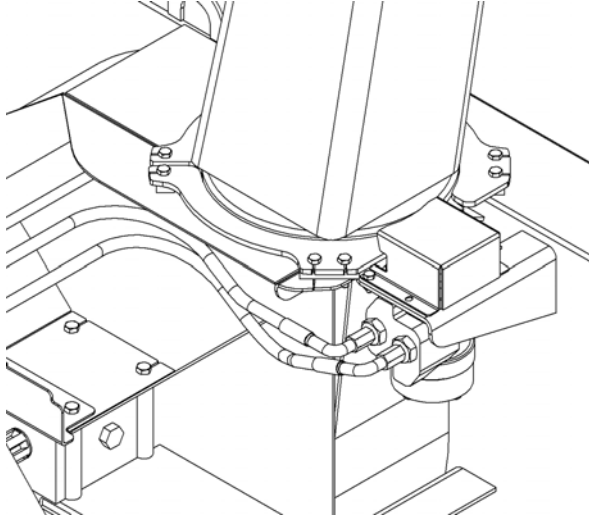
DRIVELINE FEMALE HALF (70060-03224)

REF.	DESCRIPTION	QTY	PART #	CODE
1	Driveline female half ass'y	1	70060-03224	658505
2	Inner shield	1	70060-03429	658511
3	Nylon repair kit	1	70060-04238	661555
4	Yoke & female shaft ass'y	1	70060-03430	658508
5	Universal joint kit	1	70060-01020	654478
6	Yoke 1" dia.hole.	1	70060-01019	655740



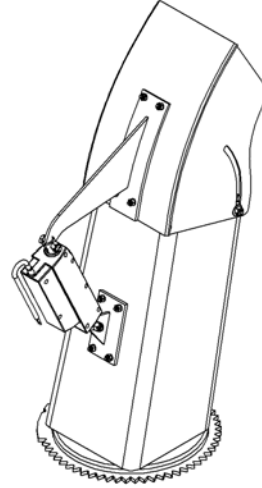
AVAILABLE OPTIONS

HYDRAULIC CHUTE ROTATION



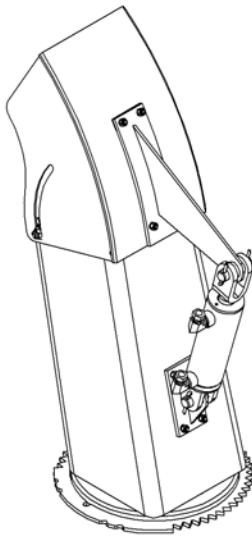
B2756

ELECTRIC CHUTE DEFLECTOR



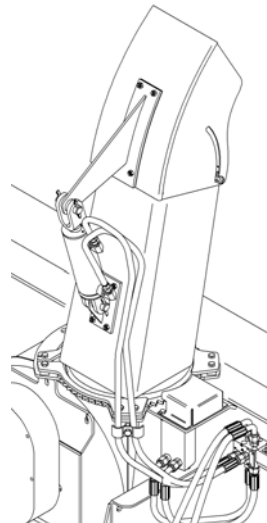
B2516A

HYDRAULIC CHUTE DEFLECTOR



BFL2518A

HYDRAULIC CHUTE DEFLECTOR WITH DEVIATOR



BL2666A




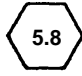

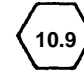
TORQUE SPECIFICATION TABLE

GENERAL SPECIFICATION TABLE

USE THE FOLLOWING TORQUES WHEN SPECIAL TORQUES ARE NOT GIVEN

Note: These values apply fasteners as received from supplier dry, or when lubricated with normal engine oil. They do not apply if special graphited or moly sulphide greases or other extreme pressure lubricants are used. These values apply to dry conditions; under lubricated conditions reduce by 25% the torques in this table.

BOLT HEAD IDENTIFICATION

INCHES Bolt Size	 Grade 2		 Grade 5		 Grade 8		METRIC Bolt Size	 Class 5.8		 Class 8.8		 Class 10.9	
	in-tpi ¹	N-m ²	lbs-ft ³	N-m	lbs-ft	N-m		lbs-ft	mmxpitch ⁴	N-m	lbs-ft	N-m	lbs-ft
1/4" – 20NC	7.4	5.6	11	8	16	12	M 5 X 0.8	4	3	6	5	9	7
1/4" – 28NF	8.5	6	13	10	18	14	M 6 X 1	7	5	11	8	15	11
5/16" – 18NC	15	11	24	17	33	25	M 8 X 1.25	17	12	26	19	36	27
5/16" – 24NF	17	13	26	19	37	27	M 8 X 1	18	13	28	21	39	29
3/8" – 16NC	27	20	42	31	59	44	M10 X 1.5	33	24	52	39	72	53
3/8" – 24NF	31	22	47	35	67	49	M10 X 0.75	39	29	61	45	85	62
7/16" – 14NC	43	32	67	49	95	70	M12 X 1.75	58	42	91	67	125	93
7/16" – 20NF	49	36	75	55	105	78	M12 X 1.5	60	44	95	70	130	97
1/2" – 13NC	66	49	105	76	145	105	M12 X 1	90	66	105	77	145	105
1/2" – 20NF	75	55	115	85	165	120	M14 X 2	92	68	145	105	200	150
9/16" – 12NC	95	70	150	110	210	155	M14 X 1.5	99	73	155	115	215	160
9/16" – 18NF	105	79	165	120	235	170	M16 X 2	145	105	225	165	315	230
5/8" – 11NC	130	97	205	150	285	210	M16 X 1.5	155	115	240	180	335	245
5/8" – 18NF	150	110	230	170	325	240	M18 X 2.5	195	145	310	230	405	300
3/4" – 10NC	235	170	360	265	510	375	M18 X 1.5	220	165	350	260	485	355
3/4" – 16NF	260	190	405	295	570	420	M20 X 2.5	280	205	440	325	610	450
7/8" – 9NC	225	165	585	430	820	605	M20 X 1.5	310	230	650	480	900	665
7/8" – 14NF	250	185	640	475	905	670	M24 X 3	480	355	760	560	1050	780
1" – 8NC	340	250	875	645	1230	910	M24 X 2	525	390	830	610	1150	845
1" – 12NF	370	275	955	705	1350	995	M30 X 3.5	960	705	1510	1120	2100	1550
1 1/8" – 7NC	480	355	1080	795	1750	1290	M30 X 2	1060	785	1680	1240	2320	1710
1 1/8" – 12NF	540	395	1210	890	1960	1440	M36 X 3.5	1730	1270	2650	1950	3660	2700
1 1/4" – 7NC	680	500	1520	1120	2460	1820	M36 X 2	1880	1380	2960	2190	4100	3220
1 1/4" – 12NF	750	555	1680	1240	2730	2010	<div><div>1</div><div>in-tpi = nominal thread diameter in inches-threads per inch</div></div> <div><div>2</div><div>N-m = newton-meters</div></div> <div><div>3</div><div>lbs-ft= pounds-foot</div></div> <div><div>4</div><div>mm x pitch = nominal thread diameter in millimeters x thread Pitch</div></div>						
1 3/8" – 6NC	890	655	1990	1470	3230	2380							
1 3/8" – 12NF	1010	745	2270	1670	3680	2710							
1 1/2" – 6NC	1180	870	2640	1950	4290	3160							
1 1/2" – 12NF	1330	980	2970	2190	4820	3560							

*Torque tolerance +0%, -15% of torquing values. Unless otherwise specified use torque values listed above

Printed in Canada