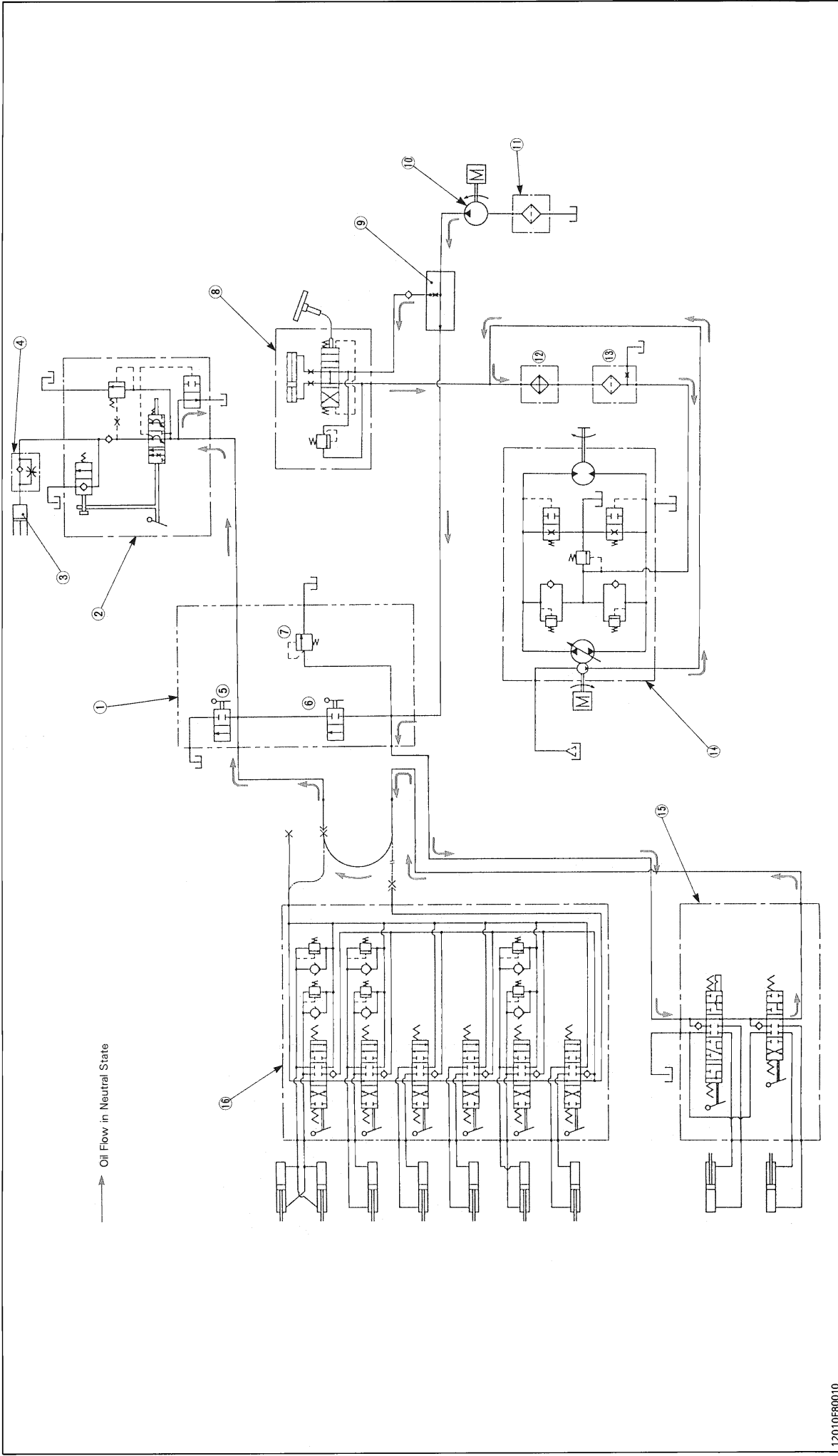


[1] HYDRAULIC CIRCUIT



12010F80010

- (1) Hydraulic Block
- (2) Position Control Valve
- (3) Hydraulic Cylinder
- (4) Lowering Speed Adjusting Valve
- (5) Hydraulic Selector Valve
- (6) Hydraulic Control Screw
- (7) Relief Valve
- (8) Power Steering
- (9) Flow Priority Valve
- (10) Hydraulic Pump
- (11) Oil Filter
- (12) Oil Cooler
- (13) Oil Filter (for HST)
- (14) Hydrostatic Transmission (HST)
- (15) Front Loader Control Valve
- (16) Backhoe Control Valve