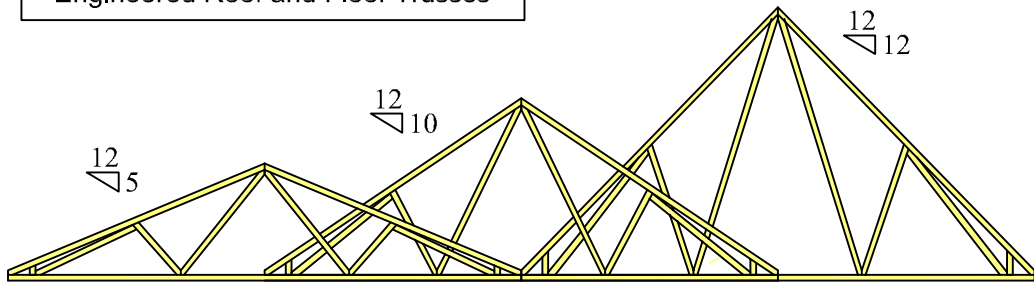


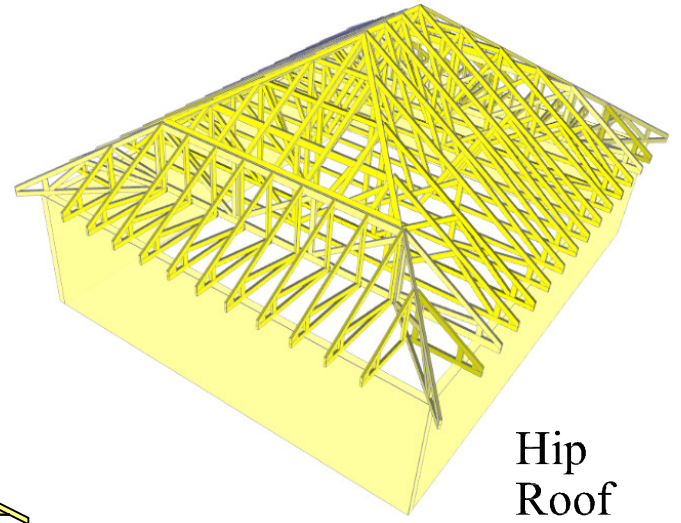


Aroostook Trusses Inc.
Engineered Roof and Floor Trusses

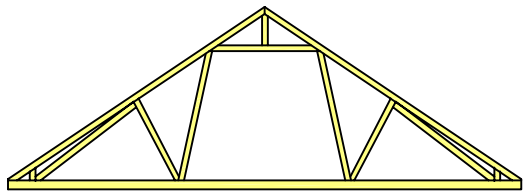
Aroostook Trusses Inc. Typical Wood Truss Configuration



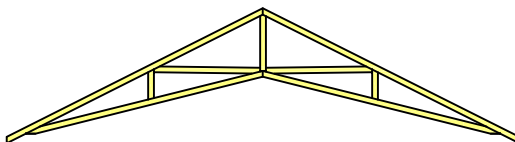
Common Trusses



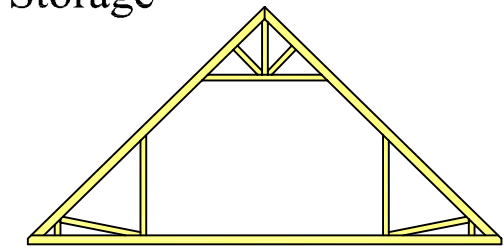
Hip Roof



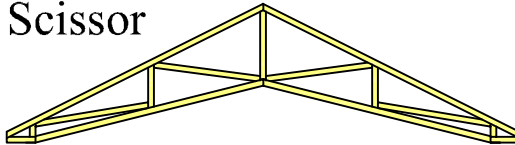
Storage



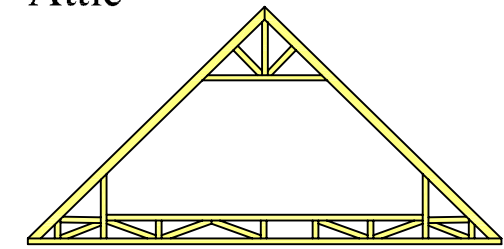
Scissor



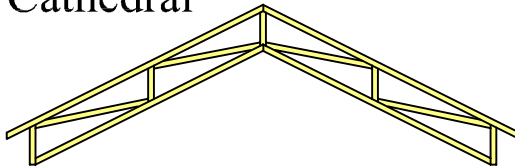
Attic



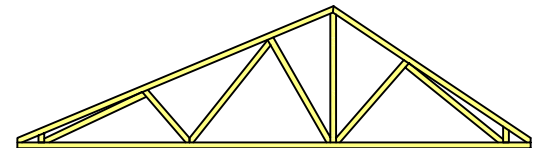
Cathedral



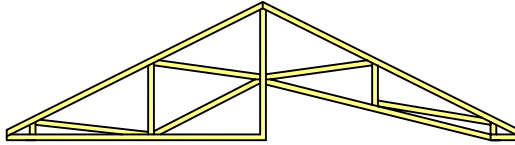
Attic w/floor
(Room over 16')



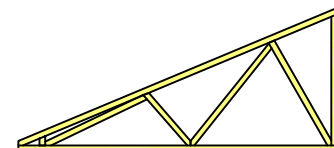
True Cathedral



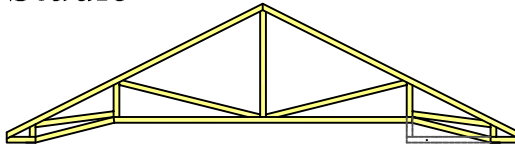
Dual Pitch
(Salt Box)



Studio

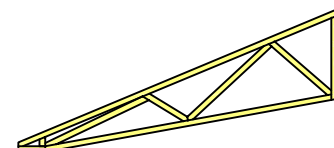


Mono

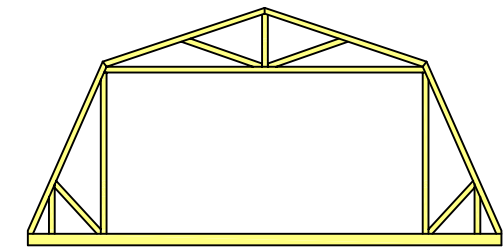


Vaulted Tray

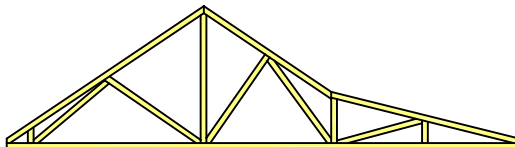
Tray



Mono Scissor

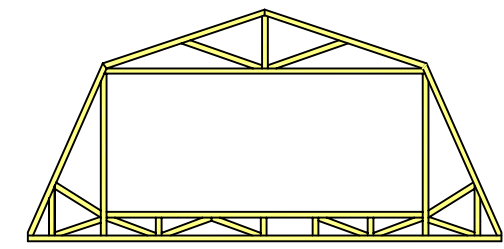


Gambrel

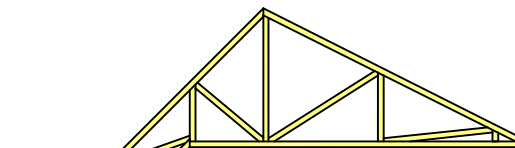


Farmers Porch

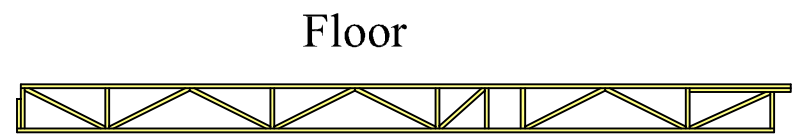
Wood trusses are pre-built components that function as structural support members. A truss commonly employs one or more triangles in its construction.



Gambrel w/floor
(Room over 16')



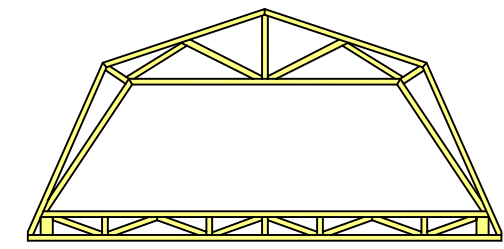
Dust Pan
(Cape)



Floor

Bottom Chord Bearing

Top Chord Bearing



Open Gambrel

Truss Parts

