

## GENERAL OPERATION (Continued)

### SEAT ADJUSTMENT

The backhoe operator's seat can be adjusted fore and aft by removing the four 5/16 NC x 3/4 bolts and lockwashers located on the lower side of the seat plate. Move seat to any of the four positions provided, reassemble the four bolts and lockwashers, and torque tighten the bolts to 10-12 pounds feet.

Adjust the seat up or down by removing the four 1/2 NF x 1" bolts which attach the seat bracket to the valve plate, and reassembling to any of the two positions provided using the four bolts and lockwashers. Torque tighten to 45-52 pounds feet.

### SWING CONTROL LOCK



**WARNING:** The swing control lock should be checked periodically to make sure that it functions properly. Refer to the following procedure.

1. Inspect swing control lock for missing, bent, or cracked parts. Replace as necessary.
2. Install backhoe swing lock pin and place swing control lock in locked position.
3. With tractor at low idle, sit in backhoe operator's seat and activate swing control lever left and right.
4. If backhoe swings either direction, stop tractor and adjust swing control lock by removing pivot pin and moving one flat washer to the side which the backhoe swung to.
5. Reassemble swing control lock and repeat items 2-4 above until backhoe does not swing to either side.
6. If proper adjustment cannot be obtained, loosen two bolts which attach swing control lock to control shroud. Adjust position of swing control lock, torque tighten bolts to 10-12 pounds feet, and repeat items 2-5 above.
7. If proper adjustment still cannot be obtained, replace swing control lock.

## BACKHOE REMOVAL AND STORAGE

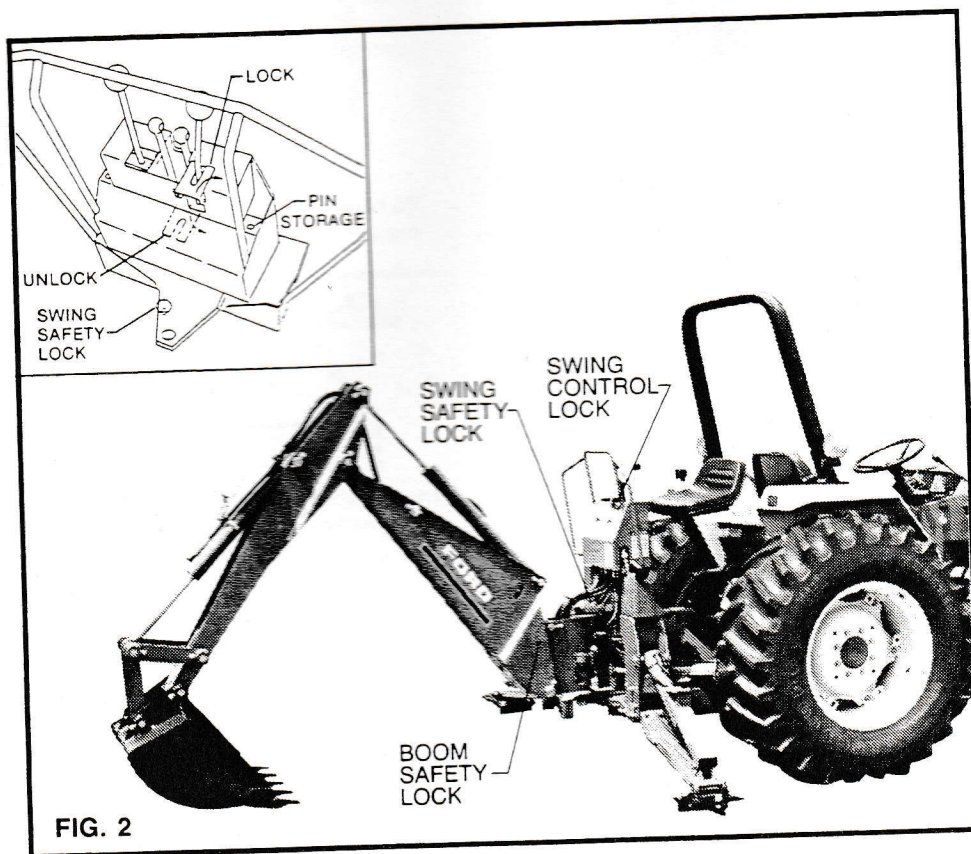
The backhoe is self-assisting during the installation and removal procedures. For removal and storage follow these steps:



**WARNING —** When attaching or detaching backhoe to/from tractor, always stand on the tractor side of the stabilizer and outside the rear wheel.

1. Engage swing safety lock, and swing control lock as shown in Fig. 2, so boom/swing control handle can not be moved right or left.
2. Raise backhoe seat until it locks in the raised position, and move tractor seat fully forward.
3. Put the stabilizers down and lift the hoe slightly.

4. Extend the dipperstick, and lower the boom so that bucket rests solidly on the ground as shown in Fig. 2.
5. Remove linch pins (28), and step pins (41) from front hangers, using rubber hammer if necessary, as shown in Fig. 18, and lower subframe away from front hangers by activating boom control lever to move boom down slightly.
6. Activate both stabilizer control levers to move stabilizers down until the weight is removed from tractor lower link pins.
7. Move tractor forward a few inches, so that hanger plates on subframe are clear of tractor lower link pins, and gently lower the backhoe mainframe and subframe to



## BACKHOE REMOVAL AND STORAGE (Continued)

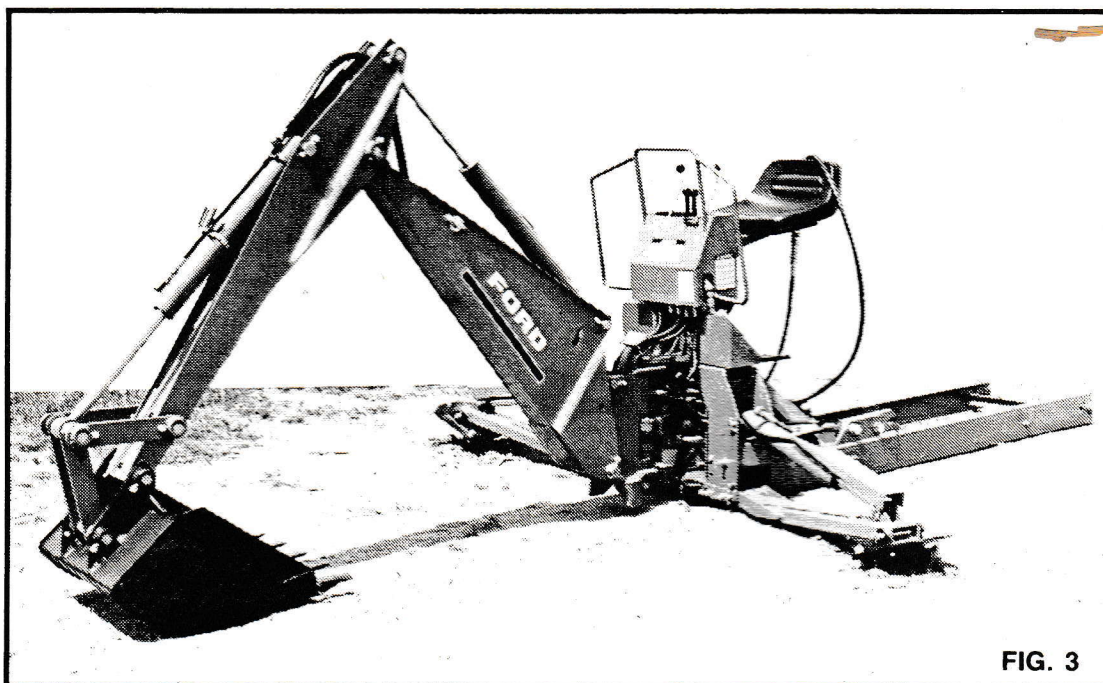


FIG. 3

the ground as shown in Fig. 3, by alternately activating the stabilizer and boom control levers to raise both stabilizers and boom a few inches at a time.

**IMPORTANT** — To maintain a solid base for the backhoe and prevent moisture build-up, it is recommended that a large piece of plywood be placed under the backhoe mainframe before detaching.

8. Stop tractor engine and uncouple backhoe pressure hose (33) from hose (30 or 31), and uncouple return hose (32) from coupler at tractor rockshaft valve cover as shown in Fig. 18. Couple backhoe pressure and return hoses together to prevent entry of dirt.

9. Couple hose (30 or 31) at tractor hydraulic manifold, and install dust cap (22) at tractor axle as shown in Fig. 17 to prevent entry of dirt.

**NOTE** — Hydraulic pressure is now restored to tractor three-point hitch.

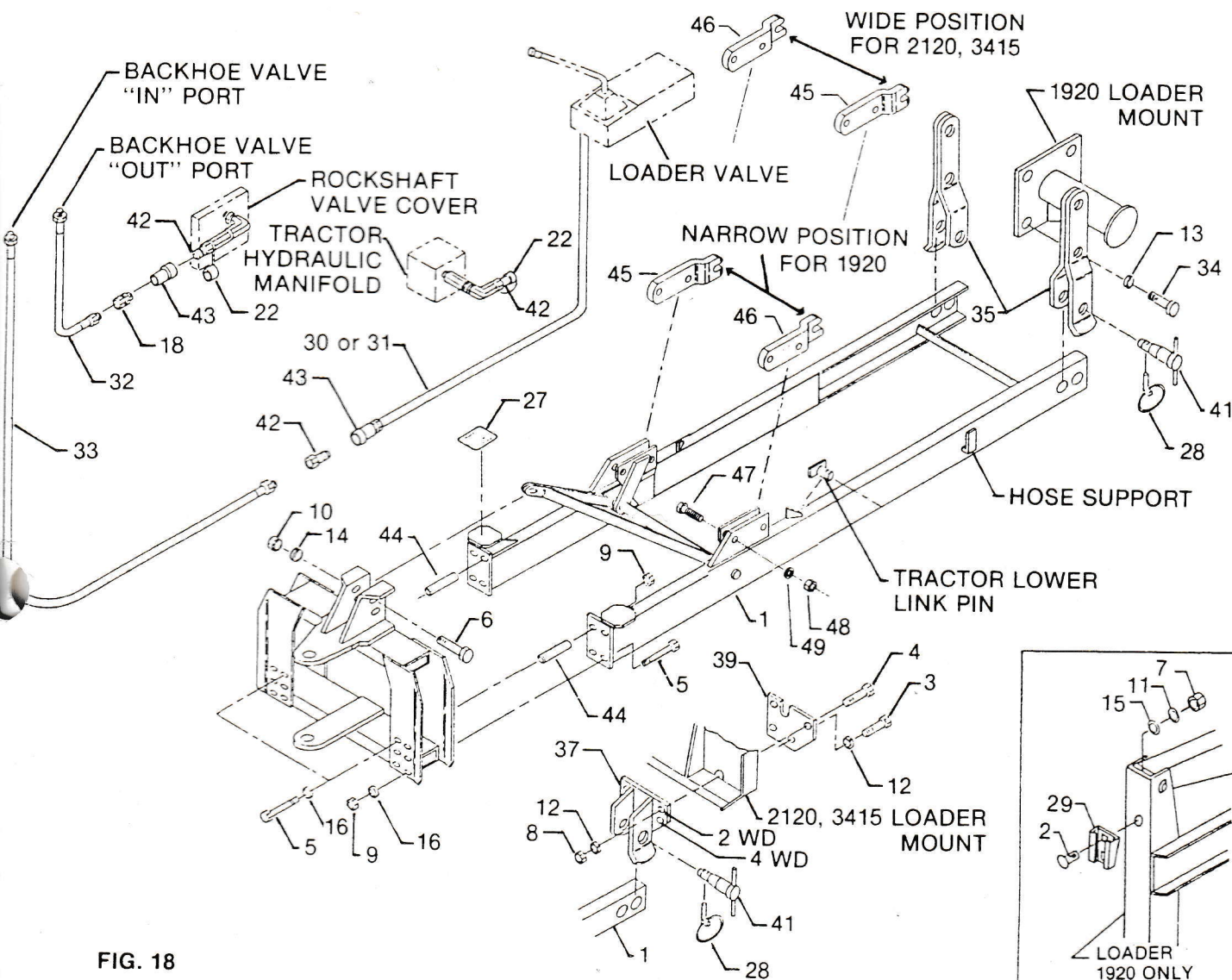
**IMPORTANT** — All quick couplers must be fully coupled, or serious damage to tractor or backhoe hydraulic systems may result.

10. Start tractor and drive forward and away from the backhoe. Be careful so that all parts clear.
11. Reinstall tractor top link, lower links, stabilizer chains, and drawbar.
12. Lubricate all grease fittings, oil control linkage and swing chains, and coat all exposed cylinder rods with grease.
13. Reinstall backhoe by reversing the above procedure.



# PARTS INFORMATION (Continued)

## ATTACHING KIT AND BACKHOE HYDRAULIC HOOK-UP



## PARTS INFORMATION (Continued)

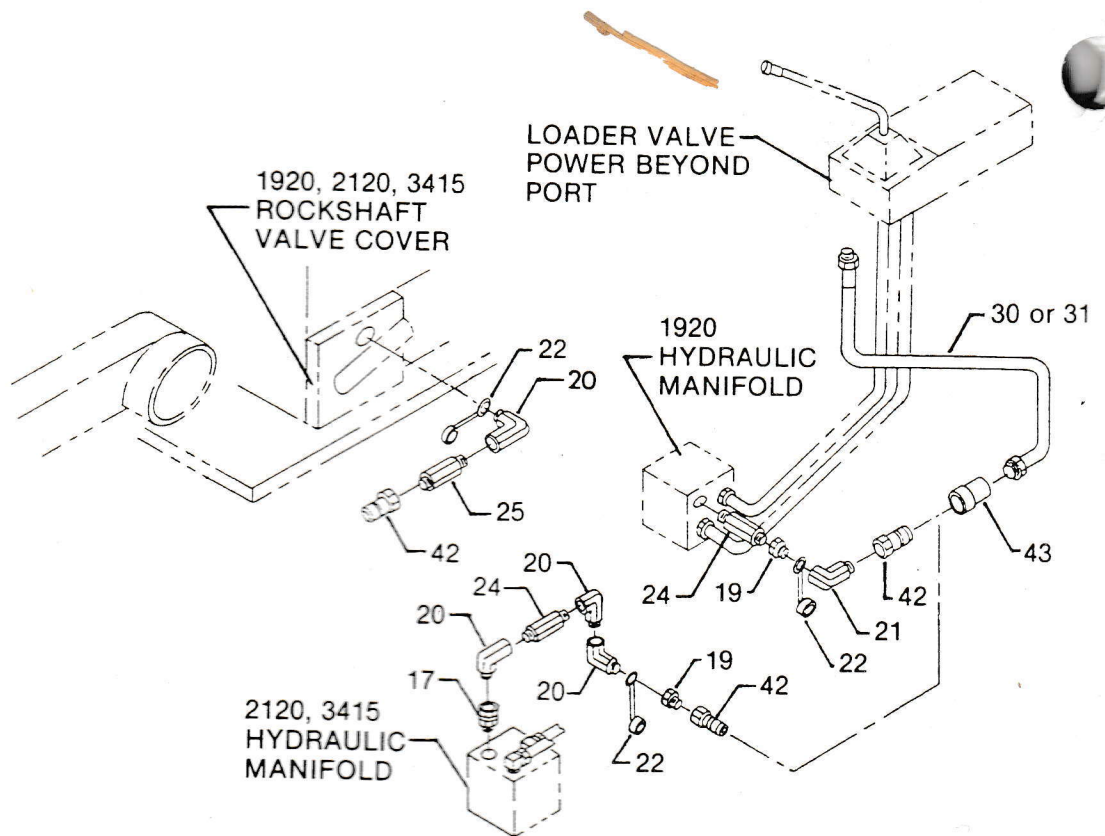
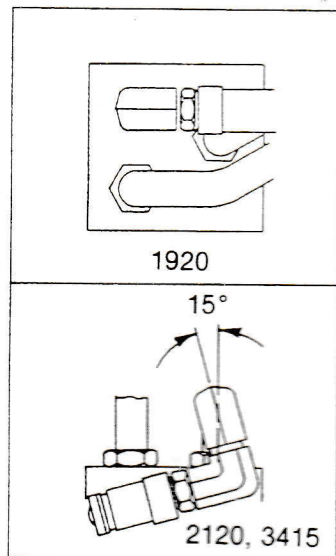


FIG. 17

### PARTS LIST — FIGURES 17 AND 18

Index	Description	Qty. 1920	Qty. 2120, 3415
1	Subframe Weldment	1	1
2	Carriage Bolt, 5/16 NC x 3/4	1	—
3	Bolt, 3/8 NC x 5" Gr. 5	—	2
4	Bolt, 3/8 NC x 5-1/2 Gr. 5	—	6
5	Bolt, 1/2 NF x 7-1/2 Gr. 5	8	8
6	Bolt, 3/4 NF x 4" Gr. 5	1	1
7	Nut, 5/16 NC	1	—
8	Nut, 3/8 NC	—	6
9	Locknut, 1/2 NF	8	8
10	Nut, 3/4 NF	1	1
11	Lockwasher, 5/16	1	—
12	Lockwasher, 3/8	—	8
13	Lockwasher, 5/8	4	—
14	Lockwasher, 3/4	1	1
15	Flat Washer, 5/16 SAE	1	—
16	Flat Washer, 1/2 SAE	8	8
17	Adapter Union, 3/8 NPT M x 3/8 NPT F	—	1
18	Adapter Union, 3/4-16 SAE M x 1/2 NPT F	1	1
19	Hyd. Reducer, 1/2 NPT M x 3/8 MPT F	1	1
20	Hyd. Street Elbow, 3/8 NPT x 90°	1	4
21	Hyd. Street Elbow, 1/2 NPT x 90°	1	—
22	Dust Cap	2	2
24	Hyd. Nipple, 3/8 NPT x 4"	1	1

Index	Description	Qty. 1920	Qty. 2120, 3415
25	Hyd. Nipple, 1/2 NPT x 3/8 NPT	1	1
27	Step Pad Surfacing, 3" x 3"	2	2
28	Linch Pin	2	2
29	SMV Socket	1	—
30	Hyd. Hose, 3/4-16 SAE M x 30"	1	—
31	Hyd. Hose, 3/4-16 SAE M x 36"	—	1
32	Hyd. Hose, 1/2 NPT M x 60"	1	1
33	Hyd. Hose, 1/2 NPT M x 88"	1	1
34	Bolt, M16 x 2.0 x 70 MM	4	—
35	Front Hanger Weldment	2	—
37	RH Front Hanger Weldment	—	1
38	LH Front Hanger Weldment (not shown)	—	1
39	RH Hanger Plate	—	1
40	LH Hanger Plate (not shown)	—	1
41	Step Pin Assembly	2	2
42	Male Coupler, 1/2 NPT F	3	3
43	Female Coupler, 3/4-16 SAE F	2	2
44	Spacer bushing	2	2
45	RH Rear Hanger	1	1
46	LH Rear Hanger	1	1
47	Bolt, 7/8NF x 3" Gr. 5	4	4
48	Nut, 7/8NF	4	4
49	Lockwasher, 7/8	4	4