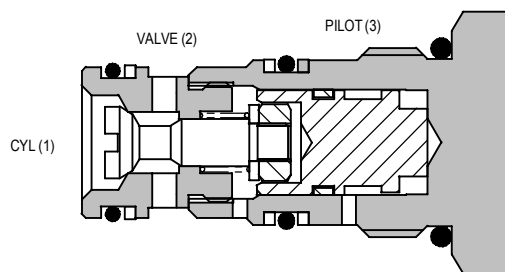
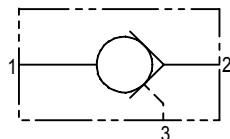




4CK SERIES CHECK VALVE

PILOT TO OPEN

4CK30



APPLICATION

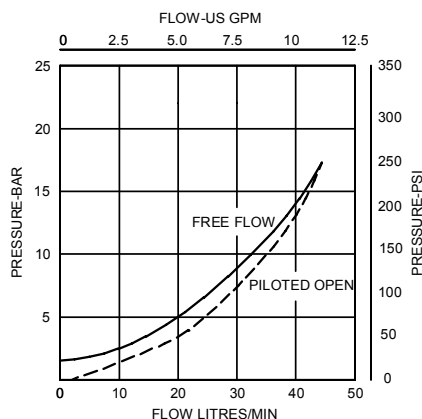
Pilot check valves allow flow to pass in one direction, with a low pressure drop, then prevent reverse flow until pilot pressure is applied. There are many applications for this valve type, the most common being to lock and hold a cylinder, or another hydraulic actuator, in position.

The 4CK30 is a small cartridge valve and is ideally suited for fitting directly into a cylinder, giving economy of installation, direct control of cylinder movement and ease of servicing.

OPERATION

Pressure on the valve port causes the poppet to lift against the spring force, allowing the flow to the cylinder port. Reverse flow is prevented by the poppet reseating. Pressure applied to the pilot port will overcome the cylinder port pressure and lift the poppet from its seat, allowing flow from the cylinder to valve port.

PRESSURE DROP



FEATURES

Hardened and ground poppet gives excellent flow capability for valve size, positive sealing and long working life. Cartridge construction allows installation in actuators, manifold blocks and Hydraulic Integrated Circuits. Fits the same cavity as the 1CE30 overcentre valve. See page 6-111.

SPECIFICATIONS

Figures based on: Oil Temp = 40°C Viscosity = 40 cSt

Rated Flow	30 litres/min (8 US GPM)
Max Pressure	350 bar (5000 psi)
Pilot Ratio	3:1
Cartridge Material	Working parts hardened and ground steel. Electroless zinc plated body
Body Material	Standard aluminium (up to 210 bar*) Add suffix '377' for steel option.
Mounting Position	Unrestricted
Cavity Number	A6610 (See Section 17)
Torque Cartridge into Cavity	45 Nm (33 lbs ft)
Weight	4CK30 0.08 kg (0.18 lbs) 4CK35 0.34 kg (0.75 lbs) 4CKK35 0.76 kg (1.67 lbs)
Seal Kit Number	SK430 (Nitrile) SK430V (Viton)
Recommended Filtration Level	BS5540/4 Class 18/13 (25 micron nominal)
Operating Temp	-20°C to +90°C
Leakage	0.3 millilitres/min nominal
Nominal Viscosity Range	5 to 500 cSt

*For applications above 210 bar please consult our technical department or use the steel body option.

Integrated Hydraulics Ltd

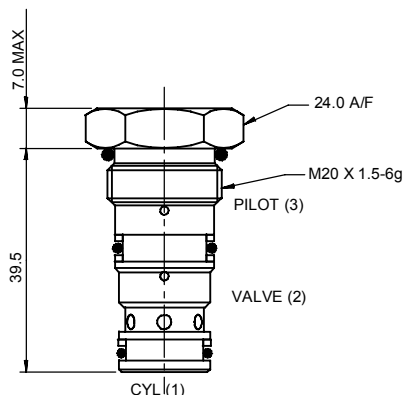
Collins Road, Heathcote Ind. Est., Warwick, CV34 6TF, UK.
Tel: +44 (0) 1926 881171 Fax: +44 (0) 1926 315729
Website: www.integratedhydraulics.com

Integrated Hydraulics Inc

7047 Spinach Drive, Mentor, Ohio 44060, USA
Tel: (440) 974 3171 Fax: (440) 974 3170
Website: www.integratedhydraulics.com

CARTRIDGE ONLY

BASIC CODE: 4CK30



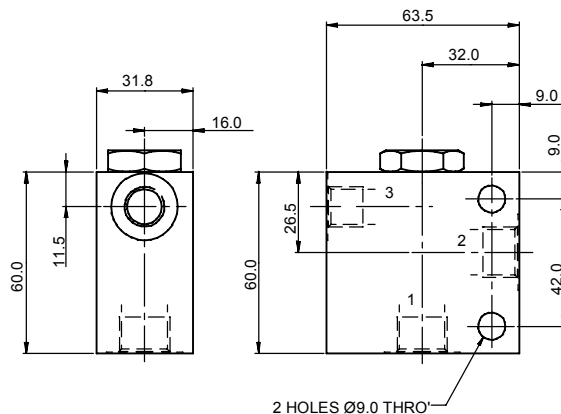
SINGLE VALVE

3/8" 1/2" PORTS

BASIC CODE: 4CK35

Body ONLY part numbers

BSP, aluminium	SAE, aluminium	BSP, steel	SAE, steel
3/8" B6743	3/8" B10536	3/8" B12823	1/2" B11811
	1/2" B7884		



DUAL VALVE

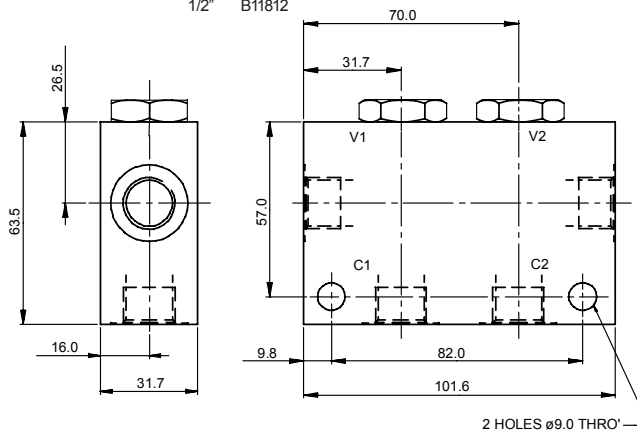
3/8" 1/2" PORTS

BASIC CODE: 4CKK34

DUAL CHECK VALVE (INTERNALLY CROSSED PILOTED)

Body ONLY part numbers

BSP, aluminium	SAE, aluminium	BSP, steel	SAE, steel
3/8" B6836	3/8" B10805	3/8" B13803	1/2" B11812
	1/2" B30237		



Where measurements are critical request certified drawings

ORDERING CODE EXAMPLE

4CK***

1

3W

S

3

Basic Code

4CK30 = Cartridge Only

4CK35 = Cartridge and Body

4CKK34 = Cartridges and Dual Body

Pilot Port Sizes

1 = Internal

Port Sizes - Bodied Valves Only

3W = 3/8" BSP. 1/4" BSP Pilot Port

6T = 3/8" SAE. 1/4" SAE Pilot Port

8T = 1/2" SAE. 1/4" SAE Pilot Port

Optional Pilot Seal

Omit if not required

Seals

S = Nitrile (For use with most industrial hydraulic oils)

SV = Viton (For high temperature and most special fluid applications)

We reserve the right to change specifications without notice