



## Service Information System

Shutdown SIS

Previous Screen

◀Product: MINI HYD EXCAVATOR

Model: 303 MINI HYD EXCAVATOR DMA

Configuration: 303 CR Mini Hydraulic Excavator DMA00001-UP (MACHINE) POWERED BY S3L2 Engine

## Operation and Maintenance Manual

### 303 CR Mini Hydraulic Excavator

Media Number -SEBU7452-07

Publication Date -01/10/2007

Date Updated -17/10/2007

i02193523

## Operator Controls

SMCS - 7300; 7301; 7451

---

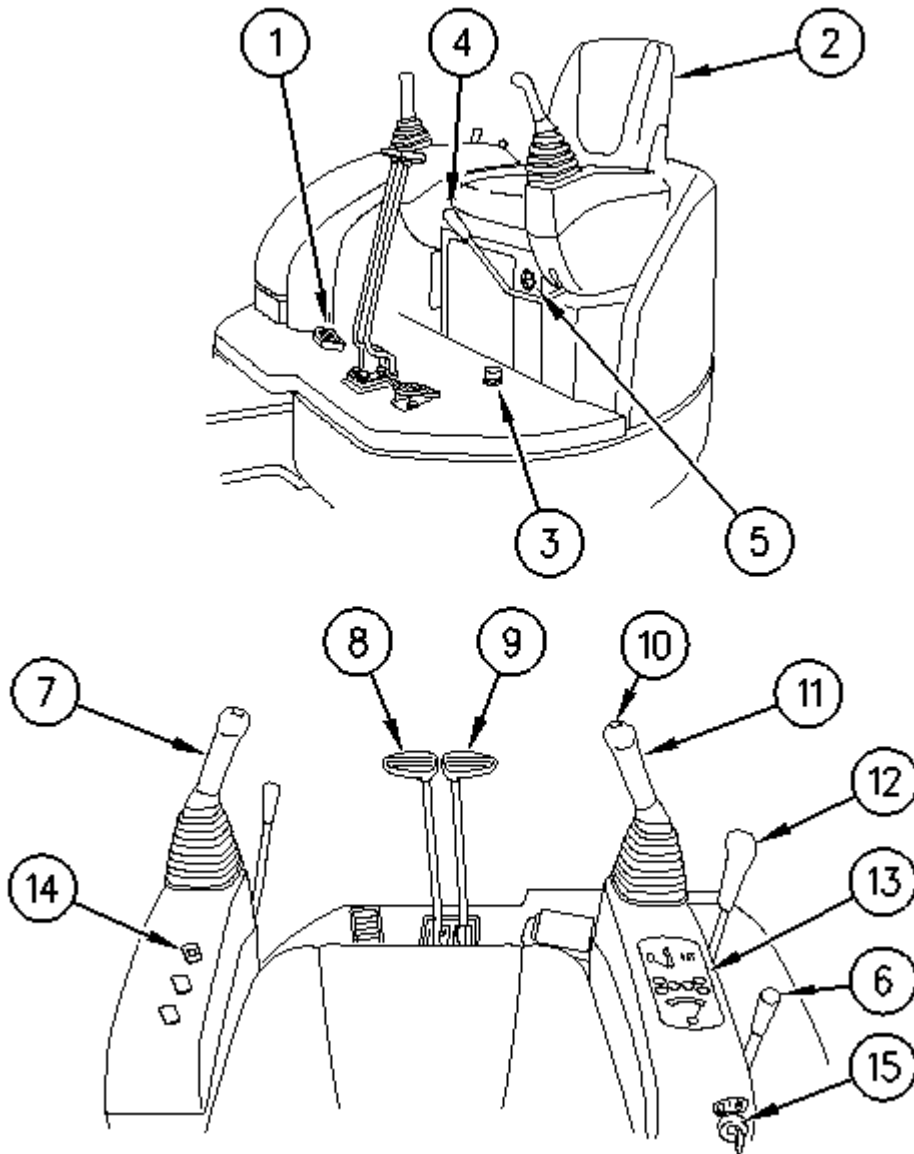


Illustration 1

g00878767

- (1) Boom swing pedal
- (2) Operator's seat
- (3) Travel speed control switch
- (4) Hydraulic lockout control
- (5) Service hour meter
- (6) Engine speed lever
- (7) Left joystick
- (8) Left travel lever
- (9) Right travel lever
- (10) Horn switch

- (11) Right joystick
- (12) Blade control lever
- (13) Instrument panel
- (14) Light switch
- (15) Engine start switch

---

[Copyright 1993 - 2012 Caterpillar Inc.](#)  
[All Rights Reserved.](#)  
[Private Network For SIS Licensees.](#)

Thu Apr 5 13:04:16 CDT 2012