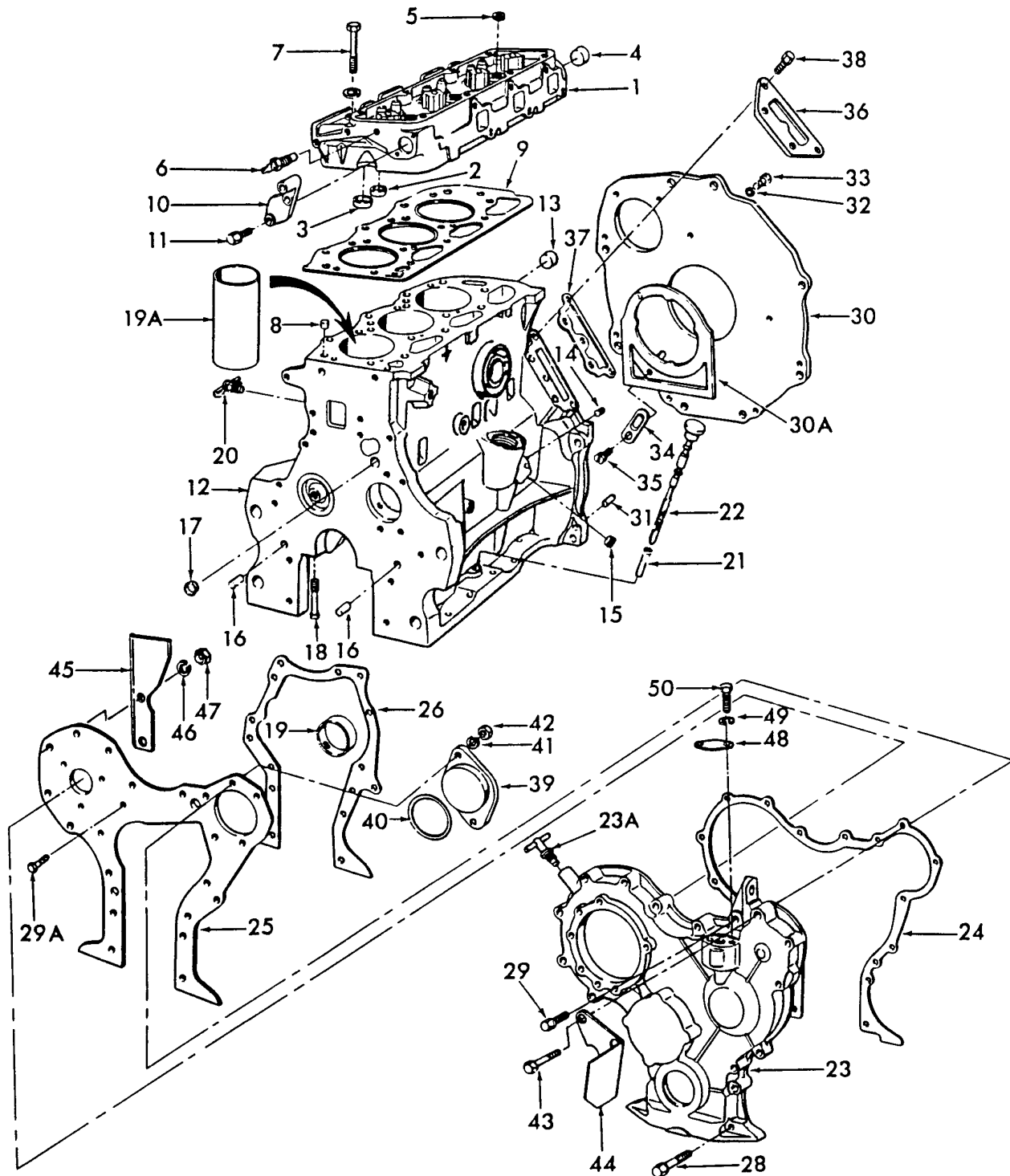


(3000-SERIES) - 3 CYL TRACTOR (1/65-12/74) > (06A01) - CYLINDER HEAD, BLOCK





PARTS & MERCHANDISE
STORE

New Holland Agriculture 621 State Street
NA.TopService@newholland.com Racine, Wisconsin 53404
866-639-4563 option 1

(3000-SERIES) - 3 CYL TRACTOR (1/65-12/74) > (06A01) - CYLINDER HEAD, BLOCK

| Diag # | Part # | Name | Description | Qty |
|--------|-------------|---|---|-----|
| | E6NN6009AXA | SHORT ENGINE | Short Block Assy., 2000, Start Year: 01-JAN-65 | 1 |
| | | When Replacing Prior Level Blocks W/E6NN- Level Blocks, also order: (1) E5HN-6N306-AC(81868536), (1) E9NN-6N305-AA(81864356), (1) E5NN-6701-BA, (1) E5HN-6269-AA, (2) D5NN-6A008-A(83905798), (1) FP-576(81869944), (1) FP-115(83956698), (8) 34791-S36, (2) 34792-S36, (8) 304682-S36(81821203), (1) E2NN-6N071-AA(83932724), (1) 87708s36(83902337), (1) 87840404, (1) 43191S2(83948594), (2) 58633S2, (1) FP575(81869941), and (1) 87840406. | When Replacing Prior Level Blocks W/E6NN- Level Blocks, also order: (1) E5HN-6N306-AC(81868536), (1) E9NN-6N305-AA(81864356), (1) E5NN-6701-BA, (1) E5HN-6269-AA, (2) D5NN-6A008-A(83905798), (1) FP-576(81869944), (1) FP-115(83956698), (8) 34791-S36, (2) 34792-S36, (8) 304682-S36(81821203), (1) E2NN-6N071-AA(83932724), (1) 87708s36(83902337), (1) 87840404, (1) 43191S2(83948594), (2) 58633S2, (1) FP575(81869941), and (1) 87840406. | 1 |
| | | No Longer Serviced. | No Longer Serviced. | 1 |
| | D5NN6009R | SHORT ENGINE | Short Block Assy., 3000, Start Year: 01-JAN-65 | 1 |
| | | Includes Ref. 2 thru 6 | Includes Ref. 2 thru 6 | 1 |
| | D5NN6009A | SHORT ENGINE | Short Block Assy., 4000, Start Year: 01-APR-68 | 1 |
| | D3NN6009J | SPARE PART | Short Block Assy., 5000, Replaces C9NN6009F, Start Year: 01-APR-68 | 1 |
| | | Order Components | Order Components | 1 |
| | | No Longer Serviced NH-E. | No Longer Serviced NH-E. | 1 |
| | C5NN6009H | SPARE PART | Short Block Assy., 5000, Years: 01-JAN-66-31-MAR-68 | 1 |
| | | Order Components | Order Components | 1 |
| | | No Longer Serviced. | No Longer Serviced. | 1 |
| 1 | D5NN6049K | CYLINDER HEAD | Head Assy., Cylinder, 2000, Includes: Ref. 2 thru 6, Start Year: 01-JAN-65 | 1 |
| | | No Longer Serviced NHNA. | No Longer Serviced NHNA. | 1 |
| 1 | E4NN6049CC | CYLINDER HEAD | Head Assy., Cylinder, 3000, 4000, Includes: Ref. 2 thru 6, Start Year: 01-JAN-65 | 1 |
| | | No Longer Serviced NHNA. | No Longer Serviced NHNA. | 1 |
| 1 | D3NN6049J | CYLINDER HEAD | Head Assy., Cylinder, 5000, Includes: Ref. 2 thru 6, Start Year: 01-JAN-66 | 1 |

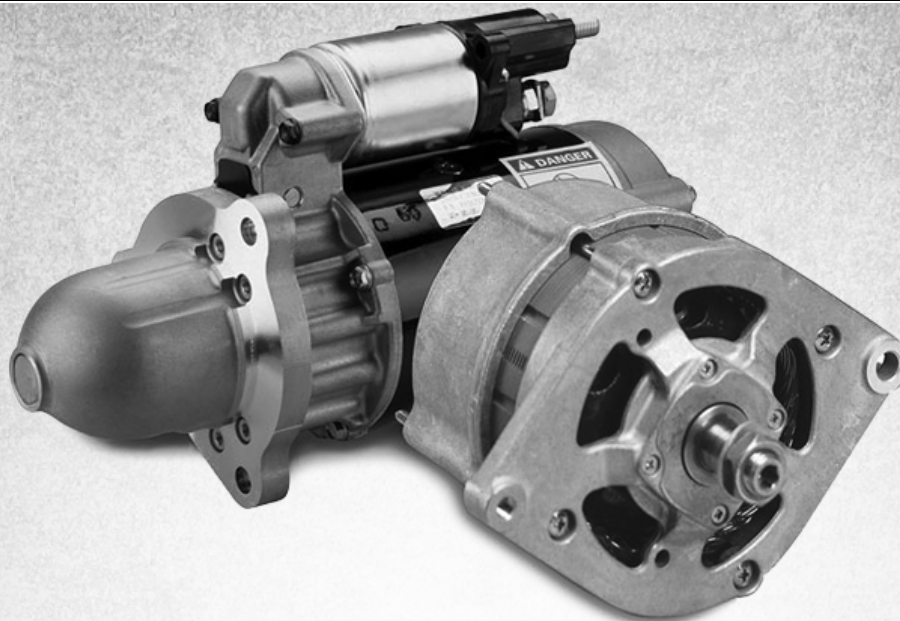
| Diag # | Part # | Name | Description | Qty |
|--------|------------|--------------------------|---|-------|
| | | No Longer Serviced. | No Longer Serviced. | 1 |
| 2 | C5NE6056A | INSERT | Insert, Intake Valve Seat, Standard, Start Year: 01-JAN-65 | 3/4 |
| 2 | C5NE6056C | INSERT | Insert, Intake Valve Seat, .010 (.254mm) O/S, Start Year: 01-JAN-65 | 1 |
| 2 | C5NE6056B | INSERT | Insert, Intake Valve Seat, .020 (.508mm) O/S, Start Year: 01-JAN-65 | 1 |
| | | No Longer Serviced NHNA. | No Longer Serviced NHNA. | 1 |
| 2 | C5NN6056A | INSERT | Insert, Intake Valve Seat, .030 (.762mm) O/S, Start Year: 01-JAN-65 | 1 |
| 3 | C5NE6057A | INSERT | Insert, Exhaust Valve Seat, Standard, Start Year: 01-JAN-65 | 3/4 |
| 3 | C5NE6057C | INSERT | Insert, Exhaust Valve Seat, .010 (.254mm) O/S, Start Year: 01-JAN-65 | 1 |
| 3 | C5NE6057B | INSERT | Insert, Exhaust Valve Seat, .020 (.508mm) O/S, Start Year: 01-JAN-65 | 1 |
| 3 | C5NN6057A | INSERT | Insert, Exhaust Valve Seat, .030 (.762mm) O/S, Start Year: 01-JAN-66 | 1 |
| 4 | 378862S | PLUG | Plug, Pipe, Threaded, 1-1/2" - 11 x 1/2", Years: 01-JAN-65-28-FEB-69 | 1 |
| 4 | 83957025 | PLUG | Plug, 1.75" (44.5mm), Start Year: 01-MAR-69 | 1 |
| 5 | 370731S | PLUG | Plug, Pipe, 3/4", Years: 01-JAN-65-31-MAR-68 | 3/4 |
| 5 | 380391S | PLUG | Plug, Cup, .875 to .877 O.D., Start Year: 01-APR-68 | 3/4 |
| 5 | 87836S36 | PLUG | Plug, SH, 1/8"-27 x .28", Years: 01-JAN-65-31-MAR-68 | 1 |
| 6 | C4AH10884A | SENDER UNIT | Sender Assy., Water Temperature Indicator, Start Year: 01-APR-68 | 1 |
| | D5NN10911A | ADAPTER | Adapter, Water Temperature Indicator, 1/8"-27 I.D. x 3/8" O.D., Start Year: 01-JAN-65 | 1 |
| | 383442S | PLUG | Plug, Cup, .931 O.D., Used for O/S Hole in Head, Service Only, Years: 01-MAR-69-31-MAY-75 | 1 |
| | 83957026 | PLUG | Plug, 1.81" (46.05mm), Service Only, Start Year: 01-MAR-69 | 1 |
| | 83957022 | PLUG | Plug, 1.18" (30.0mm), Service Only, Start Year: 01-JUN-75 | 1 |
| 7 | 83907721 | BOLT | Bolt, HH, 1/2"-13 x 4-3/4" (Replaces D5NN6065C), Start Year: 01-JAN-65 | 10/13 |
| | 377490S | WASHER | Washer, Flat, 1/2", Start Year: 01-JAN-65 | 10/13 |
| 8 | 83960218 | BUSHING | Dowel, Split, .676" x .44", Start Year: 01-JAN-65 | 2 |
| | | NHNA Only. | NHNA Only. | 1 |
| 9 | 82845200 | CYLINDER HEAD GASKET | Gasket, Head, .037" (.940mm) Thick, 2000, 3000, Years: 01-JAN-65-31-OCT-74 | 1 |

| Diag # | Part # | Name | Description | Qty |
|--------|------------|---|---|-----|
| 9 | 82845201 | CYLINDER HEAD GASKET | Gasket, Head, .037" (.940mm) Thick, 4100, 4110, Start Year: 01-JAN-65 | 1 |
| 9 | 87801653 | CYLINDER HEAD GASKET | Gasket, 3000, 4000, Start Year: 01-JAN-65 | 1 |
| | | When Replacing D5NN-6049-L(87762760) W/E4NN-6049-CC(83955326), Gasket E4NN-6051-AC must also be used. | When Replacing D5NN-6049-L(87762760) W/E4NN-6049-CC(83955326), Gasket E4NN-6051-AC must also be used. | 1 |
| 9 | 82845203 | CYLINDER HEAD GASKET | Gasket, Head, .029" (.737mm) Thick, 5000, Years: 01-JAN-66-31-MAR-68 | 1 |
| 9 | 82845202 | CYLINDER HEAD GASKET | Gasket, Head, .037" (.940mm) Thick, 5000, Years: 01-APR-68-31-MAY-76 | 1 |
| 10 | D3NN6C052A | COVER | Cover, Water Outlet, Start Year: 01-JAN-65 | 1 |
| | 80681 | BEARING WASHER,5/16" | Washer, Lock, 5/16", Start Year: 01-JAN-65 | 2 |
| 11 | 304701S36 | SCREW | Screw, Cap, HH, G5, 5/16"-18 x 1-1/8", Start Year: 01-JAN-65 | 2 |
| 12 | E2NN6010AC | BLOCK | Block Assy., 2000, 3000, Includes: Ref. 13 Thru 19, Start Year: 01-JAN-65 | 1 |
| | | When Replacing Prior Level Blocks W/E6NN- Level Blocks, also order: (1) E5HN-6N306-AC(81868536), (1) E9NN-6N305-AA(81864356), (1) E5NN-6701-BA, (1) E5HN-6269-AA, (2) D5NN-6A008-A(83905798), (1) FP-576(81869944), (1) FP-115(83956698), (8) 34791-S36, (2) 34792-S36, (8) 304682-S36(81821203), (1) E2NN-6N071-AA(83932724), (1) 87708s36(83902337), (1) 87840404, (1) 43191S2(83948594), (2) 58633S2, (1) FP575(81869941), and (1) 87840406. | When Replacing Prior Level Blocks W/E6NN- Level Blocks, also order: (1) E5HN-6N306-AC(81868536), (1) E9NN-6N305-AA(81864356), (1) E5NN-6701-BA, (1) E5HN-6269-AA, (2) D5NN-6A008-A(83905798), (1) FP-576(81869944), (1) FP-115(83956698), (8) 34791-S36, (2) 34792-S36, (8) 304682-S36(81821203), (1) E2NN-6N071-AA(83932724), (1) 87708s36(83902337), (1) 87840404, (1) 43191S2(83948594), (2) 58633S2, (1) FP575(81869941), and (1) 87840406. | 1 |
| 12 | E2NN6010BA | CYLINDER BLOCK | Block Assy., Cylinder, 4000, Includes: Ref. 13 Thru 19, Start Year: 01-JAN-65 | 1 |
| | | When Replacing Prior Level Blocks W/E6NN- Level Blocks, also order: (1) E5HN-6N306-AC(81868536), (1) E9NN-6N305-AA(81864356), (1) E5NN-6701-BA, (1) E5HN-6269-AA, (2) D5NN-6A008-A(83905798), (1) FP-576(81869944), (1) FP-115(83956698), (8) 34791-S36, (2) 34792-S36, (8) 304682-S36(81821203), (1) E2NN-6N071-AA(83932724), (1) 87708s36(83902337), (1) 87840404, (1) 43191S2(83948594), (2) 58633S2, (1) FP575(81869941), and (1) 87840406. | When Replacing Prior Level Blocks W/E6NN- Level Blocks, also order: (1) E5HN-6N306-AC(81868536), (1) E9NN-6N305-AA(81864356), (1) E5NN-6701-BA, (1) E5HN-6269-AA, (2) D5NN-6A008-A(83905798), (1) FP-576(81869944), (1) FP-115(83956698), (8) 34791-S36, (2) 34792-S36, (8) 304682-S36(81821203), (1) E2NN-6N071-AA(83932724), (1) 87708s36(83902337), (1) 87840404, (1) 43191S2(83948594), (2) 58633S2, (1) FP575(81869941), and (1) 87840406. | 1 |

| Diag # | Part # | Name | Description | Qty |
|--------|------------|---|---|-----|
| | | 34791-S36, (2) 34792-S36, (8) 304682-S36(81821203), (1) E2NN-6N071-AA(83932724), (1) 87708s36(83902337), (1) 87840404, (1) 43191S2(83948594), (2) 58633S2, (1) FP575(81869941), and (1) 87840406. | 43191S2(83948594), (2) 58633S2, (1) FP575(81869941), and (1) 87840406. | |
| 12 | E2NN6010CC | CYLINDER BLOCK | Block Assy., Replaces C5NN6010M, 5000, Includes: Ref. 13 Thru 19, Start Year: 01-JAN-66 | 1 |
| | | When Replacing Prior Level Blocks W/E6NN- Level Blocks, also order: (1) E5HN-6N306-AC(81868536), (1) E9NN-6N305-AA(81864356), (1) E5NN-6701-BA, (1) E5HN-6269-AA, (2) D5NN-6A008-A(83905798), (1) FP-576(81869944), (1) FP-115(83956698), (8) 34791-S36, (2) 34792-S36, (8) 304682-S36(81821203), (1) E2NN-6N071-AA(83932724), (1) 87708s36(83902337), (1) 87840404, (1) 43191S2(83948594), (2) 58633S2, (1) FP575(81869941), and (1) 87840406. | When Replacing Prior Level Blocks W/E6NN- Level Blocks, also order: (1) E5HN-6N306-AC(81868536), (1) E9NN-6N305-AA(81864356), (1) E5NN-6701-BA, (1) E5HN-6269-AA, (2) D5NN-6A008-A(83905798), (1) FP-576(81869944), (1) FP-115(83956698), (8) 34791-S36, (2) 34792-S36, (8) 304682-S36(81821203), (1) E2NN-6N071-AA(83932724), (1) 87708s36(83902337), (1) 87840404, (1) 43191S2(83948594), (2) 58633S2, (1) FP575(81869941), and (1) 87840406. | 1 |
| 13 | 378862S | PLUG | Plug, Pipe, Threaded, 1-1/2" - 11 x 1/2", Years: 01-JAN-65-30-JUN-68 | 4/5 |
| 13 | 83957025 | PLUG | Plug, 1.75" (44.5mm), Years: 01-JUL-68-31-OCT-70 | 4/5 |
| 13 | 83957023 | PLUG | Plug, 1.50" (38.0mm), Start Year: 01-NOV-70 | 4/5 |
| 13 | 83957024 | CUP PLUG,1.57" | PLUG, CUP, (39.6mm), Service Only 1.57", Start Year: 01-NOV-70 | 1 |
| 13 | 9617020 | PLUG,Hex Soc, 1/4"-18 | Plug, Pipe, HS, 1/4"-18, NPTF, Start Year: 01-JAN-65 | 1 |
| 13 | PL | PROCURE LOCALLY | Plug, 3/8"-18 x .42, Start Year: 01-JAN-65 | 1 |
| 14 | 502046 | PLUG | Plug, Pipe, 1/8"-27, Start Year: 01-JAN-65 | 1 |
| 15 | 80781 | PLUG,Sq Hd, 3/8"-18 | Plug, Pipe, Sq Hd, 3/8"-18, Start Year: 01-JAN-65 | 2 |
| 16 | 81808472 | DOWEL | Pin, Dowel, 3/8" x 1-1/8", Start Year: 01-JAN-65 | 2 |
| 17 | 378336S36 | PLUG | Plug, Cup, Start Year: 01-JAN-65 | 2 |

| Diag # | Part # | Name | Description | Qty |
|--------|-------------|-------------------------------------|--|------|
| 18 | 379548S | BOLT | Bolt, HH, 9/16"-12 x 4.45, Replaces C1VE6065C, Start Year: 01-JAN-65 | 8/10 |
| | 352532S | PLUG | Plug, Cup, 5000, Start Year: 01-JAN-66 | 1 |
| 19 | 87800499 | CAMSHAFT BEARING | Bearing, Camshaft, Front, Start Year: 01-JAN-65 | 4/5 |
| 19A | C5NN6055A | SLEEVE | Sleeve, Block, 4.1 I.D. x 4.32 O.D., Service Only, 2000, 3000, Start Year: 01-JAN-65 | 3 |
| 19A | C5NN6055A | SLEEVE | Sleeve, Block, 4.1 I.D. x 4.32 O.D., Service Only, 5000, Years: 01-JAN-66-31-MAR-68 | 4 |
| 19A | D7NN6055A | ENGINE CYLINDER LINER | Sleeve, Block, 4.3 I.D. x 4.5 O.D., Service Only, 4000, Start Year: 01-JAN-65 | 3 |
| 19A | D7NN6055A | ENGINE CYLINDER LINER | Sleeve, Block, 4.3 I.D. x 4.5 O.D., Replaces C9NN6055A, Service Only, 5000, Start Year: 01-APR-68 | 4 |
| 19A | D0NN6055A | SLEEVE | Sleeve, Block, 4.19 I.D. x 4.4 O.D., Service Only Use W/Blocks Rebored to 4.4"-111.76mm, 2000, 3000, Start Year: 01-JAN-65 | 1 |
| 20 | 81465471 | DRAINCOCK/TAP SUPPLY | Draincock, Start Year: 01-JAN-65 | 1 |
| 21 | 81829127 | TUBE,9.5936 mm OD, 62.5 mm Length | Tube, Oil Level Indicator, 2.46" (62.5mm) Long (Replaces D3NN6784A), Start Year: 01-JAN-73 | 1 |
| 21 | C5NE6784B | TUBE | Tube, Oil Level Indicator, 1.96" Lg., Years: 01-JAN-65-31-DEC-72 | 1 |
| 22 | C5NE6750D | INDICATOR | Indicator, Oil Level, Start Year: 01-JAN-65 | 1 |
| 23 | D9NN6059BA | COVER | Cover, Cylinder Front, Start Year: 01-JAN-65 | 1 |
| 23A | 83907851 | FILLER CAP | Cap Assy., Oil Fill, Start Year: 01-JAN-65 | 1 |
| 24 | 83959876 | GASKET | Gasket, Front Cover, Start Year: 01-JAN-65 | 1 |
| 25 | E5NN6C044BA | PLATE | Plate, Front Cover, Start Year: 01-JAN-65 | 1 |
| 26 | E6NN6C045BA | GASKET | Gasket, Front Plate, Start Year: 01-JAN-65 | 1 |
| 28 | 88346 | BOLT,Hex, 5/16" - 18 x 2 1/2", Gr 5 | Bolt, , w/Washer Hex, 5/16"-18 x 2 1/2", G5, Start Year: 01-JAN-65 | 2 |
| 28 | 378339S36 | SCREW | Screw | 12 |
| 29 | 88346 | BOLT,Hex, 5/16" - 18 x 2 1/2", Gr 5 | Bolt, , w/Washer Hex, 5/16"-18 x 2 1/2", G5, Start Year: 01-JAN-65 | 1 |
| 29A | 45964S36 | SCREW | Screw, Cap, HH, G5, Self-Locking, 5/16"-18 x 3/4", Start Year: 01-JAN-65 | 4 |
| 30 | E5NN6A373AB | PLATE | Plate, Rear Cover, Start Year: 01-JAN-65 | 1 |
| 30A | C7NN6N008B | GASKET | Gasket, Block to Rear Engine Plate, Start Year: 01-JAN-65 | 1 |
| 31 | 86505157 | DOWEL,1/2" x 1" | Dowel, , Block to Flywheel Housing 1/2" x 1", Start Year: 01-JAN-65 | 2 |
| 32 | 80680 | LOCK WASHER,3/8" | WASHER, LOCK, 3/8", Start Year: 01-JAN-65 | 3 |
| 33 | 88434 | BOLT,Hex, 3/8" - 16 x 3/4", Gr 5 | Screw, Cap, HH, G5, 3/8"-16 x 3/4", Start Year: 01-JAN-65 | 3 |

| Diag # | Part # | Name | Description | Qty |
|--------|-------------|---|---|-----|
| 34 | 81804217 | COVER | Cover, Flywheel Access, Start Year: 01-JAN-65 | 1 |
| 35 | 43392S36 | SCREW | Screw | 1 |
| 36 | C7NND852A | COVER | Cover, Hydraulic Pump Flange, L/Hydraulic Pump, Start Year: 01-JAN-65 | 1 |
| 37 | E4NN911AA | GASKET | Gasket, Hydraulic Pump Flange Cover, W/Engine Mounted Pump, Start Year: 01-JAN-65 | 1 |
| 37 | 81822547 | GASKET | Gasket, Hydraulic Pump Flange Cover, L/Engine Mounted Pump, Start Year: 01-JAN-65 | 1 |
| 38 | 280206 | BOLT,Hex, 3/8" - 16 x 1 3/8", Gr 5 | Screw, Cap, HH, G5, 3/8"-16 x 1-3/8", Years: 01-JAN-65-28-FEB-69 | 4 |
| 38 | NLS | NO LONGER SERVICED | Screw | 4 |
| | | Not Recommended for new design | Not Recommended for new design | 1 |
| | | No Longer Serviced. | No Longer Serviced. | 1 |
| 39 | C5NE3B681A | COVER | Cover, Power Steering Pump, L/Power Steering, Start Year: 01-JAN-65 | 1 |
| 40 | 379275S94 | O-RING,62.601mm ID x 2.692mm Width | O-Ring, 3.237 I.D. x .103 Width, Start Year: 01-JAN-65 | 1 |
| 41 | 80680 | LOCK WASHER,3/8" | WASHER, LOCK, 3/8", Start Year: 01-JAN-65 | 2 |
| 42 | 9628503 | NUT,3/8"-16, G5 | NUT, G5, 3/8"-16, Start Year: 01-JAN-65 | 2 |
| 43 | P0301634 | BOLT | Screw, Cap, Flg Hd, G5, 3/8"-16 x 2-1/2", Start Year: 01-JAN-65 | 2 |
| 44 | 81814206 | DEFLECTOR | Deflector, Fan Air, L.H., Not used in U.K. or Germany, w/Tractor with Pulley Guard, Start Year: 01-JAN-65 | 1 |
| 45 | E8NN8N630AA | DEFLECTOR | Deflector, Fan Air, LH | 1 |
| 46 | 80681 | BEARING WASHER,5/16" | Washer, Lock, 5/16", Start Year: 01-JAN-65 | 2 |
| 47 | 9635082 | NUT,5/16"-18, G5 | Nut, G5, 5/16"-18, Start Year: 01-JAN-65 | 2 |
| 48 | C5NN6095A | COVER | Cover, Fuel Pump Opening, L.P.G., NH-E, 4000, Years: 01-JAN-66-31-DEC-68 | 1 |
| | | No Longer Serviced. | No Longer Serviced. | 1 |
| 49 | 80681 | BEARING WASHER,5/16" | Washer, Lock, , 4000 L.P.G. 5/16", Years: 01-JAN-66-31-DEC-68 | 2 |
| 50 | 280345 | BOLT,Hex, 5/16" - 18 x 7/8", Gr 5, Full Thd | BOLT, , 4000 L.P.G. Hex, 5/16"-18 x 7/8", G5, Full Thd, Years: 01-JAN-66-31-DEC-68 | 2 |



DEMAND REMAN!

WHY BUY ANYTHING ELSE?

- Over 400 rotating electrical parts available
- 20-40% savings vs. new
- Tested to meet OEM quality and specs
- One year warranty on parts and labor*

* When installed by a CNH dealer

CNH **REMAN**