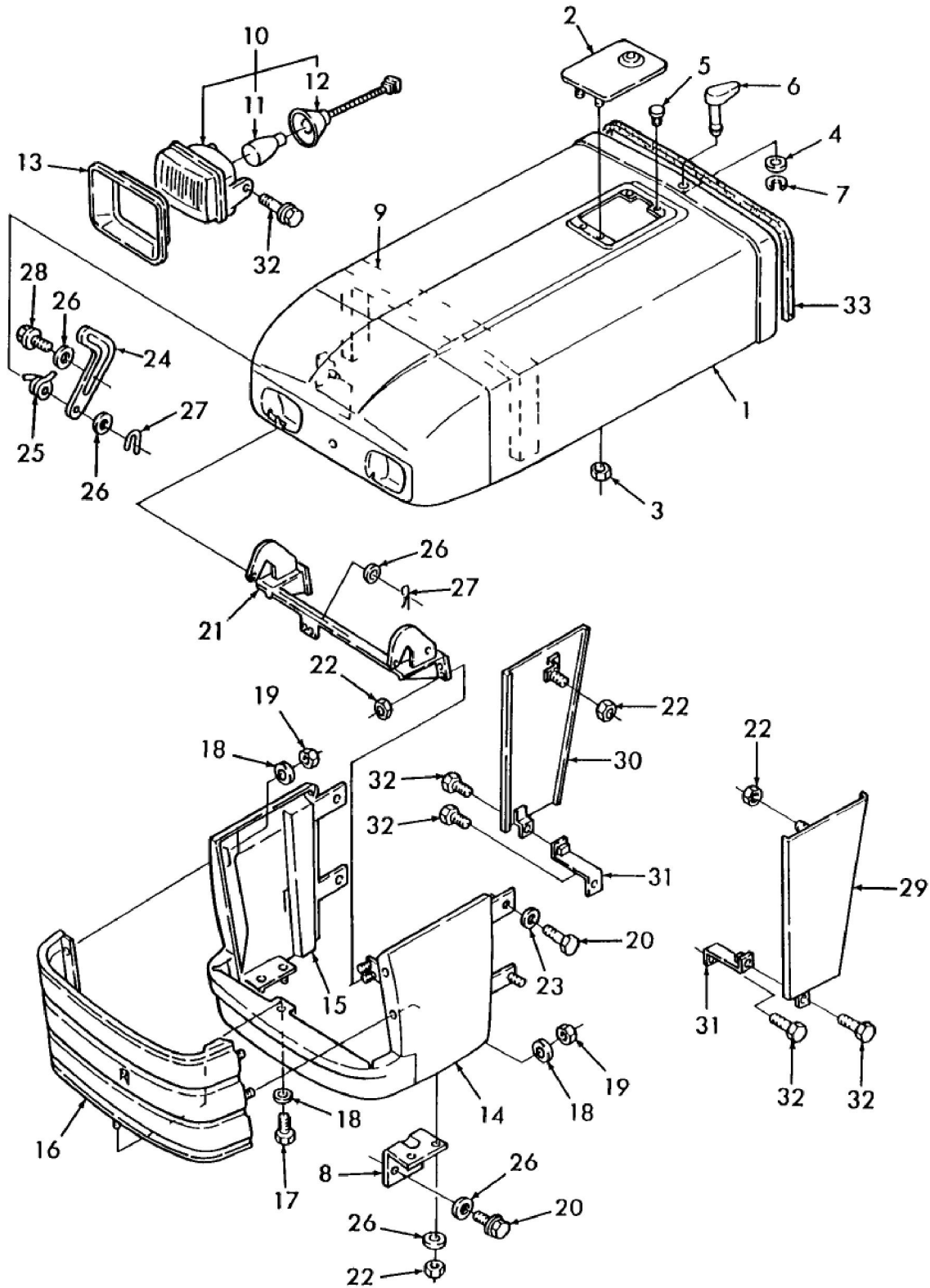


1715 3 CYL COMPACT TRACTOR 15 SERIES (2/93-8/97)
14B03 HOOD & RELATED PARTS

**1715 3 CYL COMPACT TRACTOR 15 SERIES (2/93-8/97)
14B03 HOOD & RELATED PARTS**

Key	Qty	Part Number	Part Name	Description
1	1	SBA350103380	Hood	Hood, Upper, Start Year: 01/01/1993
2	1	SBA350762610	Cover	Cover, Start Year: 01/01/1993
3	2	SBA021300004	Nut	Nut, Start Year: 01/01/1993
4	1	SBA199286250	Shim	Shim, 0.5T, Start Year: 01/01/1993
5	2	SBA398110110	Bumper	Rubber, Start Year: 01/01/1993
6	1	SBA399600040	Cotter Pin	Pin Assy., Start Year: 01/01/1993
7	1	SBA036800012	Snap Ring	Ring, Snap, E-type, Start Year: 01/01/1993
8	2	SBA350511580	Support	Support, Lower, Start Year: 01/01/1993
9	1	SBA398131460	Felt Seal	Felt, Start Year: 01/01/1993
10	2	SBA385101050	Lamp	Lamp Assy., Headlight, Single, Start Year: 01/01/1993
11	2	SBA385120630	Bulb	Bulb, 35W, Single, Start Year: 01/01/1993
12	2	SBA385140187	Cable	Wire Assy., Start Year: 01/01/1993
13	2	SBA398115610	Seal	Seal, Dust, Rubber, Start Year: 01/01/1993
14	1	SBA350101200	Engine Hood Panel	Hood, Lower, Start Year: 01/01/1993
15	2	SBA398131350	Felt Seal	Felt, Hood, Lower, Start Year: 01/01/1993
15	1	SBA350300350	Grille	Grille, White, Years: 01/01/1993-12/31/1994
16	1	SBA350300360	Radiator Grille	Grille, Black, Start Year: 01/01/1995
17	1	SBA011140616	Bolt	Bolt, M6 X 16, Start Year: 01/01/1993
18	3	9824259	Washer	Washer, M6, Start Year: 01/01/1993
19	2	9804276	Nut	Nut, M6 X 1, Flg, Cl 8, Start Year: 01/01/1993
20	6	SBA011510820	Captive Washer Screw	Screw, Captive Washer, Hex, M8 X 1.25 X 20, G5, Start Year: 01/01/1993
21	1	SBA350501220	Support	Support, Upper, Start Year: 01/01/1993
22	10	SBA021500008	Nut	Nut, M8, Start Year: 01/01/1993
23	2	SBA026109017	Washer	Washer, Start Year: 01/01/1993
24	1	SBA350520131	Plate	Plate, Stop, Start Year: 01/01/1993
25	1	SBA398213210	Spring	Spring, Hood, Upper, Start Year: 01/01/1993
26	11	86511315	Washer	Washer, M8 X 16 X 1.6, Start Year: 01/01/1993
27	2	SBA031100008	Pin	Pin, Snap, Start Year: 01/01/1993
28	1	120104	Bolt	Bolt, Hh, Cl 8.8, M8 X 1.25 X 20, Start Year: 01/01/1993
29	1	SBA350150350	Plate	Plate, Side, L.h., Start Year: 01/01/1993
30	1	SBA350150330	Plate	Plate, Side, R.h., Start Year: 01/01/1993
31	2	SBA378200840	Bracket	Bracket, Start Year: 01/01/1993
32	8	SBA011510820	Captive Washer Screw	Screw, Captive Washer, Hex, M8 X 20, G5, Start Year: 01/01/1993
33	1	SBA398130850	Seal	Seal, Hood, Start Year: 01/01/1993